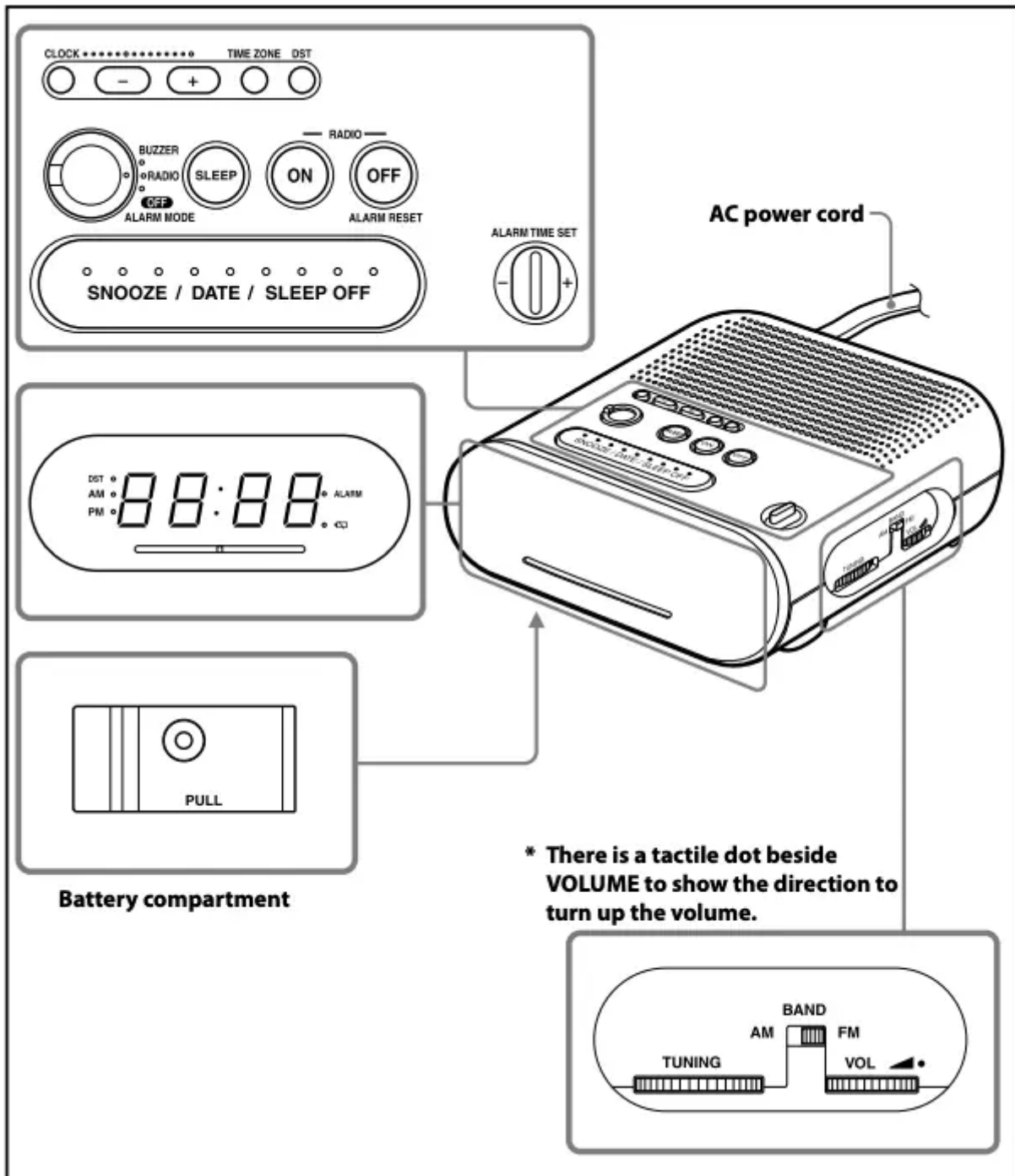


Operating Instructions for Clock Radio

Features



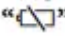
- Single alarm FM/AM Clock radio.
- Various types of alarms — radio and buzzer.
- Automatic time set — When you plug the clock in for the first time, the current time will be shown in the display.
- Automatic Daylight Saving Time/Summer time adjustment.

- Date button to display month, day and year.
- Battery backup to keep the clock during a power interruption with a CR2032 battery installed.
- Extendable snooze — snooze time can be extended from 10 to 60 minutes in maximum every time you use.

About the backup battery

To keep good time, as backup power source, this unit has one CR2032 battery inside of the unit in addition to the house current. The battery keeps the clock in the event of a power interruption.


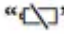
Knowing when to replace the battery

When the battery becomes weak,  indicator appears in the display.

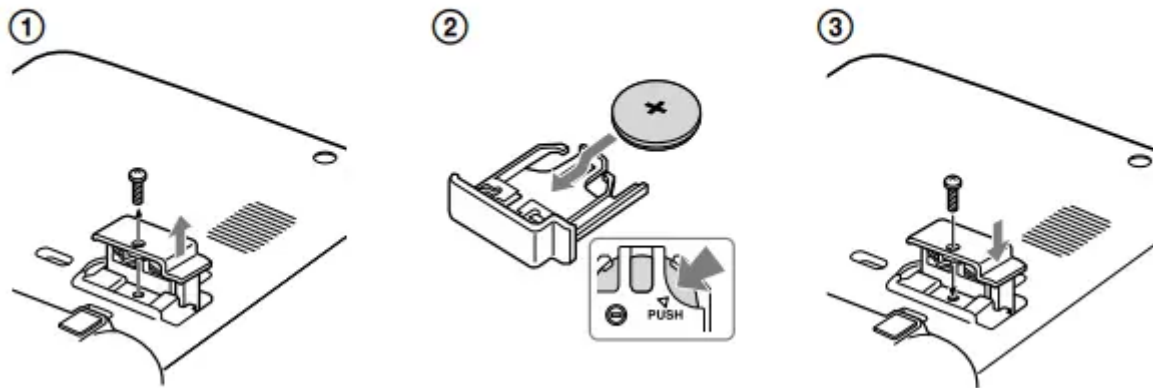
In the event of a power interruption when the battery is weak, current time and alarm functions will be initialized.

Replace the battery with a Sony CR2032 lithium battery. Use of another battery may present a risk of fire or explosion.

Installing and replacing the backup battery

1. Keep the AC plug connected to the AC outlet, remove the screw that secures the battery compartment at the bottom of the unit using a screwdriver, and remove the battery compartment. (See Fig. A-1)
2. Insert a new battery in the battery compartment with the  side facing up. To remove the battery from the battery compartment, push it out from the side marked PUSH. (See Fig. A-2)
3. Insert the battery compartment back into the unit and secure it with the screw. (See Fig. A-3)
4. When you are replacing the battery, press RADIO ON to turn  indicator off in the display

A



Note If you replace the battery, do not disconnect AC plug from AC outlet. Otherwise, current time and alarm will be initialized.

NOTES ON LITHIUM BATTERY

- Dispose of used battery promptly. Keep the lithium battery out of the reach of children. Should the battery be swallowed, immediately consult a doctor.
- Wipe the battery with a dry cloth to assure a good contact.
- Be sure to observe the correct polarity when installing the battery.
- Do not hold the battery with metallic tweezers, otherwise a short-circuit may occur.
- Do not expose the battery to excessive heat such as direct sunlight, fire or the like.

Battery Warning

When the unit will be left unplugged for a long time, remove the battery to avoid undue battery discharge and damage to the unit from battery leakage.

Setting the clock for the first time

This unit is preset to the current date and time at the factory, and is powered by the back up battery. All you need to do the first time is just plug it in and select your time zone.

1. Plug in the unit. “month and date” (about 1 second) → “year” (about 1 second) → “the current EST/EDT (Eastern Standard/Daylight Time)” appears in the display
2. Press TIME ZONE. Area number “2” appears in the display. If you live in the Eastern Time zone, you do not need to adjust the area setting.

Area number	Time zone
1	Atlantic Standard/Daylight Time
2 (default)	Eastern Standard/Daylight Time
3	Central Standard/Daylight Time
4	Mountain Standard/Daylight Time
5	Pacific Standard/Daylight Time
6	Yukon Standard/Daylight Time
7	Hawaiian Standard/Daylight Time

3. Press TIME ZONE repeatedly until the desired number appears. The display returns to the clock about 4 seconds after the operation is complete.

Note During the shipment and your first use, a clock error may occur. In this case, refer to “Setting the clock and date” to set the correct time.

When daylight saving time summer time) begins

The following models employ the Automatic Daylight Saving Time/Summer Time adjustment. The DST indicator in the display appears in the display at the beginning of the daylight saving time (summer time), and disappears at the end of it.

- Daylight saving time begins at: 2:00 AM on the second Sunday of March.
- Standard time begins at: 2:00 AM on the first Sunday of November.

To cancel the Automatic DST/ Summer Time adjustment and to set DST display manually

The Automatic DST/Summer Time adjustment can be cancelled.

Press and hold DST for more than 3 seconds while the clock is displayed.

A beep sounds, and “Aut → OFF” appears in the display to show that the Automatic DST/Summer Time adjustment is cancelled. The display returns to the clock.

Notes

- The change timing of Automatic DST/Summer Time adjustment employed by the unit (see above) is subjected to variation by circumstances and the law in each country/region. In such a case, cancel the Automatic DST/Summer Time adjustment and set DST display manually as necessary. The customer who lives in the country/region that has not

introduced the daylight saving time (summer time) must cancel Automatic DST/Summer Time adjustment before using the set

- To activate the Automatic DST/Summer Time adjustment again, press and hold DST for more than 3 seconds. A beep sounds, and “Aut → On” appears in the display to show that the Automatic DST/ Summer Time adjustment is activated. The display returns to the clock.
- To change the display to the daylight saving time (summer time) manually, see “To change the display to the daylight saving time (summer time) indication.”

Setting the clock and date

To change the setting manually, follow the procedure from step 1.

1. Press CLOCK for more than 2 seconds. You will hear a beep and the year will start to flash in the display.
 2. Press + or – until the correct year appears in the display.
 3. Press CLOCK.
 4. Repeat steps 2 and 3 to set the month, day and time. After setting the time, two short beeps sound and the clock starts from 0 seconds
- Pressing and holding + or – changes the year, month or day rapidly. When setting the current time, time changes rapidly by 1 minute-increments up to 10 minutes, and then by 10 minute-increments.
 - While setting the clock, you must perform each step within 65 seconds, or the clock setting mode will be cancelled.

To display the year and date

Press SNOOZE/DATE/SLEEP OFF once for the date, and within about 3 seconds press it again for the year.

The display shows the date or year for about 3 seconds and then changes back to the current time. If you connect the AC plug to AC outlet while this unit is powered from the backup power source, the current date and time appears in the following order. (It is same as when the unit is powered on after the power failure.)

“month and date” (about 1 second) → “year” (about 1 second) → “current time”

To change the display to the daylight saving time (summer time) indication

Change the daylight saving time (summer time) adjustment setting according to the following procedures if you have cancelled the Automatic DST/ Summer Time adjustment.

Press **DST**. DST indicator appears in the display and the time indication changes to the daylight saving time (summer time). To deactivate the daylight saving time (summer time) adjustment, press DST again.

Playing the radio

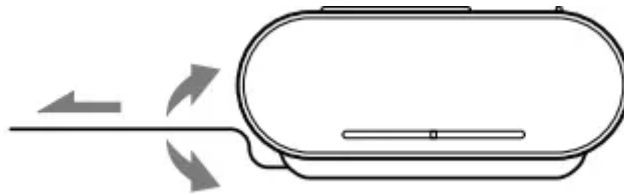
1. Press RADIO ON to turn on the radio.
2. Adjust volume using VOLUME.
3. Select BAND.
4. Tune in to a station using TUNING.

To turn off the radio

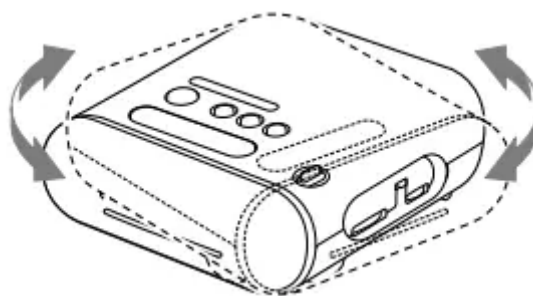
Press RADIO OFF/ALARM RESET.

Improving the reception

FM: The AC power cord functions as an FM antenna. Extend the AC power cord fully to increase reception sensitivity.



AM: Rotate the unit horizontally for optimum reception. A ferrite bar AM antenna is built-in to the unit.



Do not operate the unit over a steel desk or metal surface, as this may lead to interference of reception.

Setting the alarm

The alarm function can be select from two alarm sounds, RADIO or BUZZER.

Notes

- Before setting the alarm, make sure to set the clock (see “Setting the clock and date”).
- The factory setting alarm time is “PM 12:00”.
- To set the radio alarm, first tune in to a station and adjust the volume (see “Playing the radio”).

To set the alarm time

1. Set ALARM MODE to the desired alarm sound (RADIO or BUZZER). The alarm time appears for a few seconds, and then the ALARM indicator lights up in the display. (It does not appear when the switch is set to OFF.)
2. Slide ALARM TIME SET + or – to set the desired time. Each slide of ALARM TIME SET + or – changes the indication by 1 minute. If you keep sliding ALARM TIME SET + or –, the alarm time goes forward (or backward) by 1 minute up to 10 minutes, and then by 10 minutes increments. While setting the alarm time, the ALARM indicator flashes in the display.



When the alarm time setting operation is complete, the display returns to the clock after a few seconds and the ALARM indicator changes from flashing to fully lit.

- While ALARM MODE is set to RADIO or BUZZER, the alarm time setting can be changed by ALARM TIME SET. One slide of ALARM TIME SET displays the alarm time for about 4 seconds. By adjusting ALARM TIME SET while the alarm time appears in the display, the alarm time will be changed.
- The ALARM indicator flashes in the display while:
 - The alarm time appears in the display.
 - The alarm sounds.
 - Snooze function is turned on.
- The alarm time setting cannot be changed if ALARM MODE is set to OFF. If ALARM TIME SET is adjusted, “OFF” appears in the display for about 0.5 seconds.
- CLOCK, DST, and TIME ZONE are unavailable while the alarm sounds or snooze function is turned on.
- The alarm function works as usual at the beginning and end day of the daylight saving time (summer time). While the Automatic DST/Summer Time adjustment is set, as a result, if the alarm is set at a time skipped when the daylight saving time (summer time)

begins, the alarm is skipped, or if the alarm is set at a time overlapped when the daylight saving time (summer time) ends, the alarm sounds twice.

To doze for a few more minutes

Press SNOOZE/DATE/SLEEP OFF.

The sound turns off but will automatically come on again after about 10 minutes. Each time you press SNOOZE/DATE/SLEEP OFF, the snooze time changes as follows:

10 → 20 → 30 → 40 → 50 → 60

The maximum length of the snooze time is 60 minutes. The display shows the snooze time for about 4 seconds and returns to show the current time. When you press SNOOZE/DATE/SLEEP OFF after the current time appears, the snooze time starts from 10 minutes again.

To stop the Alarm

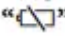
Press RADIO OFF/ALARM RESET to turn off the alarm. The alarm will come on again at the same time the next day. If RADIO OFF/ALARM RESET is not pressed, the alarm sounds continuously for about 60 minutes, and then it will stop automatically.

To deactivate the Alarm

Turn ALARM MODE to OFF. ALARM indicator disappears from the display.

Note on alarm in the event of a power interruption

If the alarm set time comes in the event of a power interruption or a power interruption occurs while the alarm is sounding, the display will turn off and the alarm will not sound, and the alarm status will be as follows. If power returns within 60 minutes from the alarm set time, the alarm will sound. If the power interruption occurred while the Snooze function was operating, the snooze function will continue. If the snooze time had passed when the power interruption occurred, the alarm will sound after power returns.

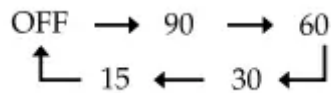
In this status, if the  indicator does not light up, RADIO OFF/ALARM RESET, SNOOZE buttons and ALARM MODE functions are available. SNOOZE time will be fixed only 10 minutes if the SNOOZE button has been pressed.

Setting the sleep timer

You can fall asleep to the radio using the built-in sleep timer that turns off the radio automatically after a preset duration.

Press SLEEP.

The radio turns on. You can set the sleep timer to durations of 90, 60, 30, or 15 minutes. Each press changes the display as follows:



Two short beeps sound when the display returns to “90”. The radio will play for the duration you set, then shut off.

To turn off the radio before the preset time

Press RADIO OFF/ALARM RESET or SNOOZE/DATE/SLEEP OFF.

To use both sleep timer and alarm

You can fall asleep to the radio and also be awakened by the radio or buzzer alarm at the preset time.

1. Set the alarm. (See “Setting the alarm”.)
2. Set the sleep timer. (See “Setting the sleep timer”.)

Troubleshooting

Should any problem occur with the unit, make the following simple checks to determine whether or not servicing is required. If the problem persists, consult your nearest Sony dealer.

The clock flashes “AM 12:00” due to a power interruption.

- The battery is low. Replace the battery. Remove the old battery and install a new one.

The radio or buzzer alarm does not sound at the preset alarm time.

- Has the desired radio or buzzer alarm been activated? (i.e., Does the ALARM indicator light up?)

The radio alarm is activated but no sound comes on at the preset alarm time

- Has VOLUME been adjusted?

Precautions

- Operate the unit on the power sources specified in “Specifications”.
- To disconnect the power cord (mains lead), pull it out by the plug, not the cord.
- Do not leave the unit in a location near a heat source, such as a radiator or airduct, or in a place subject to direct sunlight, excessive dust, mechanical vibration, or shock.
- Allow adequate air circulation to prevent internal heat build-up. Do not place the unit on a surface (a rug, blanket, etc.) or near materials (a curtain) that might block the ventilation holes.

- Should any solid object or liquid fall into the unit, unplug the unit and have it checked by a qualified personnel before operating it any further.
- To clean the casing, use a soft cloth dampened with a mild detergent solution.

If you have any questions or problems concerning your unit, please consult your nearest Sony dealer.

Warning

This content is compiled from multiple sources and is provided for reference purposes only. It may not be complete or fully applicable to all situations. If you are unable to resolve your issue, please contact the product manufacturer or an authorized service provider for official support.