

### Important Safeguards

Read these instructions carefully and retain them for future use. If this product is passed to a third party, then these instructions must be included

- Prevent unauthorized entry. The electronic lock is pre-programmed with default user code and programming code. After installation and setup, change the codes
- Store the codes in a safe place and change them from time to time
- Make sure that no unauthorized person has the access to the codes.
- Do not use excessive force or sharp objects to push the buttons on the keypad.
- Close the door completely when going outside. The manufacturer does not assume the responsibility for any harm caused by engagement of the lock on an improperly closed door
- No lock can provide complete security by itself. This product may be defeated by forcible or technical means, or evaded by entry elsewhere on the property. No lock can substitute for caution, awareness of your environment, and common sense. The builder's hardware is available in multiple performance grades to suit the application. In order to enhance security and reduce risk, consult a qualified locksmith or other security professionals.

### Before First Use

- Remove all the packing materials
- Remove and review all components before use.
- Check the product for transport damages.

### Installation

For installation steps, refer to the provided installation manual.

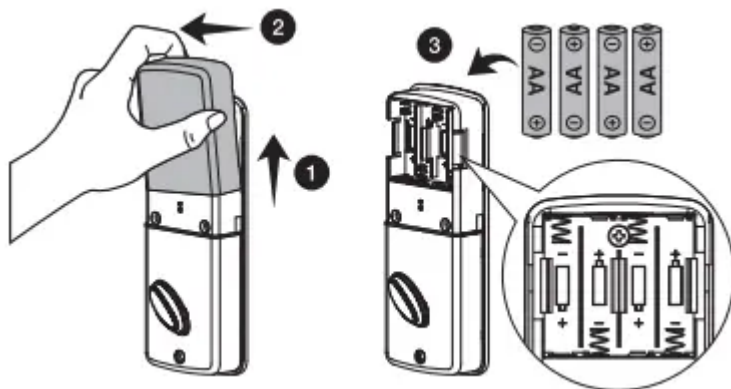
### Operation

#### Inserting batteries

##### NOTICE:

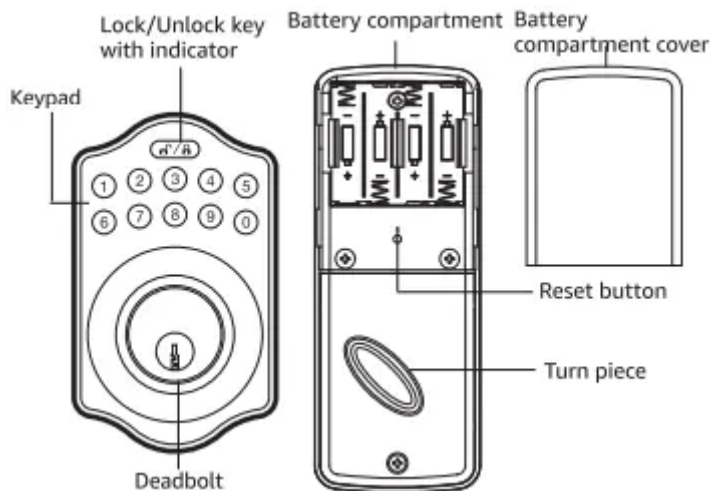
- Always use alkaline batteries. Insert batteries correctly with regard to polarity (+ and -) marked on the battery and the product

- Exhausted batteries should be immediately removed from product and properly disposed. Replace all batteries at the same time. Do not mix new and old batteries.
- Insert the batteries after the product has been installed on the door.
- The programming code and user code will be stored after replacing batteries



1. Push the battery compartment cover (M) upwards, then pull it out.
2. Insert four AA batteries into the battery compartment.
3. Slide the battery compartment cover (M) back onto the interior assembly (K).

### Indicator signals and lights



Description	Signal	Light
Successful operation	1x Beep	1x Green flash
Successful programming	2x Long beep	2x Green flash
Operation error/Incorrect code input	3x Beep	3x Red flash
Incorrect code input 5 times*	5x Beep	5x Red flash
Low battery power	10x Beep	10x Red flash
Default settings restored	3x Long beep	3x Orange flash
In programming mode	-----	3x Orange slow flash

\* The lock will temporarily freeze for 45 seconds.

## Programming

### NOTICE:

- Programming and assigning new codes is only possible . when the lock is unlocked and the door is open.
- In this chapter, PC refers to programming code; and UC refers to user code

### Determining Door Handing

NOTICE: Before use, first retract the bolt, then follow below combination to teach the lock the orientation of the door. The default programming code (PC) is 0000.

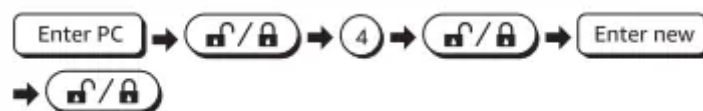


The latch bolt will extend and retract. Once the operation is successful, the lock beeps twice and the indicator flashes green twice.

### Changing Programming Code

#### NOTICE :

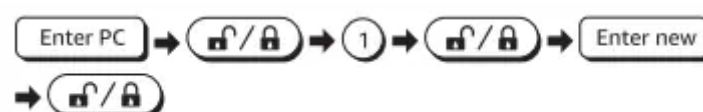
- The default user code (UC) is 1234. Change the code with 4-10 digits in length. Up to 10 sets of user codes can be saved.
- The programming code and user code cannot be identical.
- The lock will temporarily freeze for 45 seconds if unauthorized codes code has been entered more than 5 times.



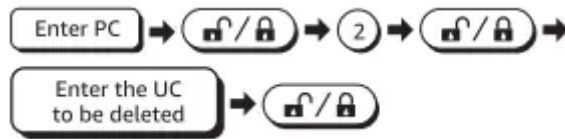
### Adding New User Code

#### NOTICE :

- The default user code (UC) is 1234. Change the code with 4-10 digits in length. Up to 10 sets of user codes can be saved.
- The programming code and user code cannot be identical.
- The lock will temporarily freeze for 45 seconds if unauthorized codes code has been entered more than 5 times.



### Deleting an Existing User Code



**Deleting All User Codes at Once**

NOTICE : when all user codes are deleted, the lock can only be operated with the keys. Auto-lock or keypad functions are disabled until a new user code is set



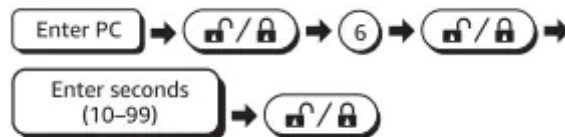
**Activating/Deactivating Auto-Lock**

NOTICE : After the auto-lock function is activated, the lock locks automatically after being unlocked for 30 seconds.



**Setting Auto-Lock Time Delay**

NOTICE : The default auto-lock time delay is set to 30 seconds. Set the time delay between 10 and 99 seconds



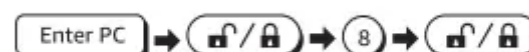
**Muting/Unmuting Signal Sounds**

NOTICE : When the signal sound is muted, the indicator lights are still active



**Enabling/Disabling All User Codes**

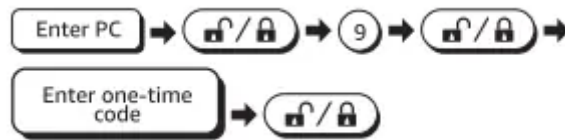
NOTICE : When all user codes are disabled, the lock can only be operated with the keys. Auto-lock or keypad functions are disabled.



**Creating a One-Time User Code**

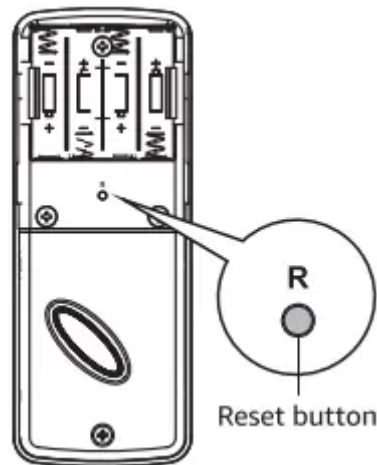
NOTICE : The one-time user code can only be used once and will expire automatically





## Restoring Default Settings

NOTICE : Using a pointed object, press and hold the reset button for 5 seconds. The lock emits 3 long beeps and all the settings are restored to the original factory settings. Follow steps in chapter "Determining Door Handing" before re-programming.



## Cleaning and Maintenance


- To clean the product, wipe with a soft, slightly moist cloth.
- Regularly check that all the components and fasteners are tightened.
- Never use corrosive detergents, wire brushes, abrasive scourers, metal or sharp utensils to clean the product.

## Troubleshooting

Problem	Solution
The latch does not retract easily when rotating the turn piece or using the key.	Ensure the position of the strike plate on the door frame is aligned with the position of the latch.
The electronic lock does not function.	<ul style="list-style-type: none"><li>• Check the connection of the cables. The colored edges of the connectors must be aligned.</li><li>• Ensure the batteries are new and installed correctly</li></ul>
The indicator light flashes red 3 times when determining the door handing.	<ul style="list-style-type: none"><li>• Ensure the door is open and unlocked.</li><li>• Use new set of batteries.</li><li>• Reset the product to default factory settings and determine the door handing again.</li></ul>
The door cannot be locked with the electronic lock.	<ul style="list-style-type: none"><li>• Ensure the electronic lock is programmed with at least one user code. See chapter "Adding new user code".</li><li>• Ensure the user codes are not disabled. See chapter "Enabling/Disabling all user codes".</li></ul>
Door jammed while attempting to lock. Upon pressing any of the keys, all keys light up blue and the lock does not function.	<ul style="list-style-type: none"><li>• Manually re-lock door. If needed, reposition the strike plate.</li><li>• 5 incorrect user codes entered within one minute. The lock is temporarily locked for 45 seconds. Re-enter the user code after 45 seconds.</li></ul>

## Specifications

### Electronic lock

Voltage/battery type	6 V  , 4x 1.5 V AA
Battery life	Up to 1 year with 4x AA Alkaline batteries
Door thickness	1-3/8–1-3/4" (35–45 mm)
Backset	2-3/8" (60 mm)/ 2-3/4" (70 mm)
Latch bolt	Steel latch bolt, full 1" (25.4 mm) throw
Cylinder and keys	Kwikset keyway, 2 keys

Passage lever (for B08J4KFHMN, B08J4K74SB, B08J4K728S, B08J4K9YMX, B08J4J5N4G)

Door thickness	1-3/8–1-3/4" (35–45 mm)
Backset	2-3/8" (60 mm)/ 2-3/4" (70 mm)
Latch bolt	Zinc alloy latch bolt with 1/2" (12.7 mm) throw

### Warning

This content is compiled from multiple sources and is provided for reference purposes only. It may not be complete or fully applicable to all situations. If you are unable to resolve your issue, please contact the product manufacturer or an authorized service provider for official support.