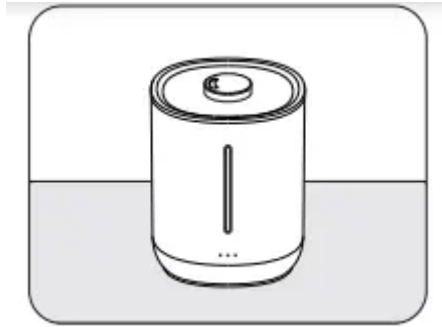
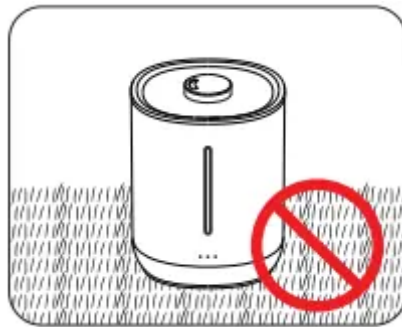


BEFORE EACH USE - CHECK HUMIDIFIER PLACEMENT

- Place the humidifier on a clean, solid, waterproof, non-metallic, and level surface at least 5 inches away from walls and heat sources.



- DO NOT place it on top of a towel or a carpeted surface. The air inlet may be blocked and the device gets overheated.



- DO NOT place the humidifier on a wood surface or near the furniture that can be damaged by too much moisture



- DO NOT operate without water in the water tank. The humidifier will not mist at low water level.



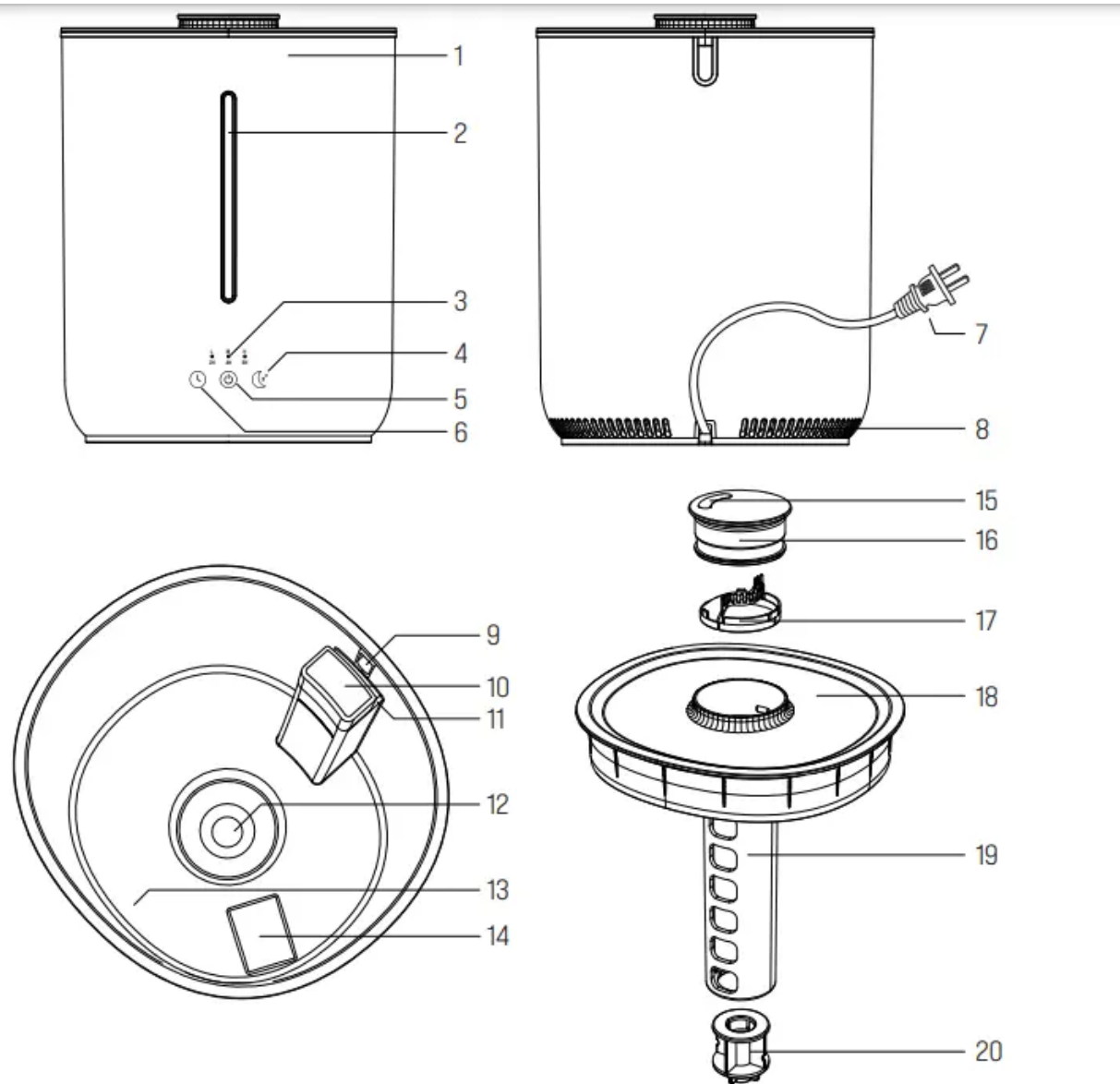
- DO NOT plug in the cord with wet hands, or an electric shock could occur.



HOW IT WORKS

- This top-fill cool mist humidifier works based on an ultrasonic technology with touch button control. Featuring 3 mist levels, 3 timer settings, sleep mode, and lower water protection, it's quite convenient and safe to use and keep a comfortable humidity in your house or office.

PRODUCT DIAGRAM



- 1 - Water Tank
- 2 - Water Window
- 3 - LED Indicators
- 4 - Light/Sleep Mode Button
- 5 - Power/Mist Button
- 6 - Timer Button
- 7 - Power Cord

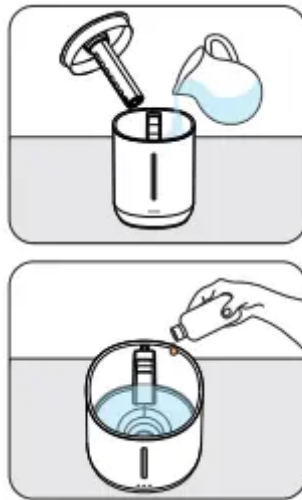
- 8 - Air Inlet
- 9 - Overflow Hole
- 10 - Air Outlet
- 11 - Max Water Level Line
- 12 - Nebulizer (equipped with Ceramic Disc)
- 13 - Tank Light

- 14 - Low Water Sensor
- 15 - Nozzle
- 16 - Top Cap
- 17 - Mist Shaping Ring
- 18 - Tank Cover
- 19 - Mist Tube
- 20 - Float



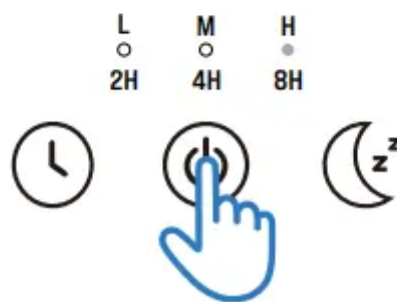
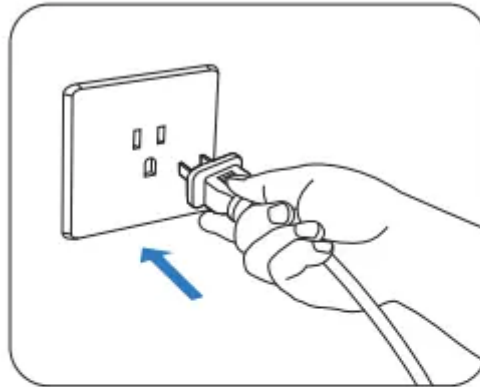
OPERATIONS AND FUNCTION

Add Water

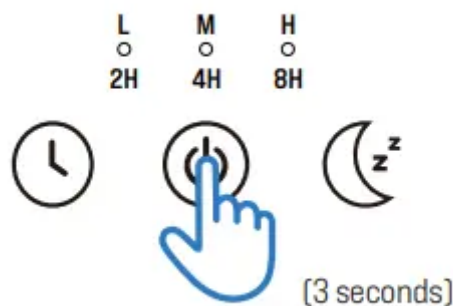


- Remove the tank cover, fill the water tank with tap water till the Max Water Level Line. Put the tank cover back on. Make sure it fits securely for smooth misting.
- Add drops of essential oil directly to the tank (if needed) when there's enough water
- Note: Excessive water will flow out from the overflow hole when you overfill the tank.

Power On & Off

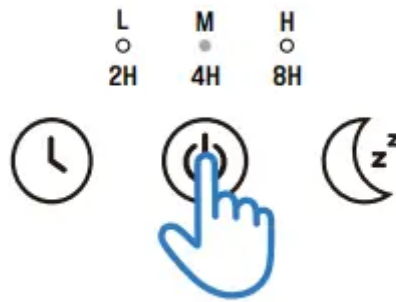


- Connect the power cord of the humidifier to a power source, the unit is in standby mode.
- Tap the Power button to power on the device. The button and mist indicator will light up white showing the current level of mist speed (high by default) with a beep sound
- Tap and hold the Power button for about 3s to turn the device off (both mist and light off). The airflow will continue for 15s after mist off to dry the mist tube.



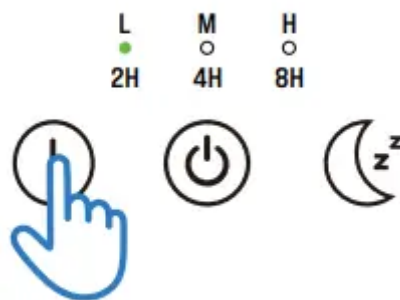
- If there is not enough water inside the water tank, the humidifier will not mist*
- *Low Water Auto-Off Protection When a low water level is detected by Low Water Sensor, the humidifier will stop misting. 3 beeps will be heard, and tank light will flash and then go out. It is designed for safety concern to prevent the humidifier from possibly overheating and damaging the nebulizer.

Mist Adjustment



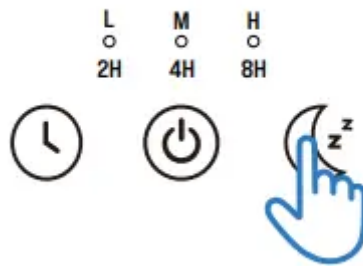
- When the unit is on, tap the Mist button to cycle through L -> M -> H mist levels. The corresponding LED indicator will light up solid white with a beep sound.

Timer Setting



- Tap the Timer button to set the timer as 2H / 4H / 8H / Timer Off. The corresponding LED indicator will light up green with a beep sound for each timer setting and then go out, while all the 3 LEDs will be on and off when timer is set off.
- To cancel the timer setting, tap the Timer button to select Timer Off (all the 3 LEDs will flash on and go out).

Sleep Mode Setting



- When the mist is on, touch the Sleep Mode button to turn the Sleep Mode on. All the indicators and the tank light will be off. The mist level will change to Low; to adjust the timer and mist, just tap the button, and the corresponding LED indicator will light up (no beep will be heard).
- To wake up Sleep mode, tap the Sleep Mode button.

CLEANING AND MAINTENANCE

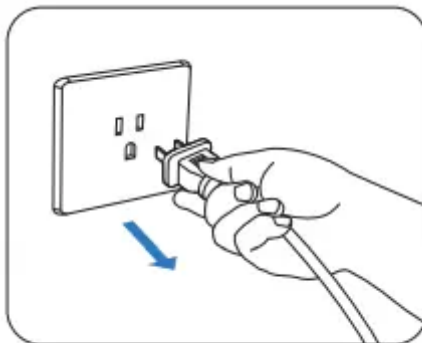
Daily Cleaning & Maintenance

- For daily cleaning and maintenance of the exterior of the humidifier, use a soft, damp cloth to wipe clean in case of dust or stains.

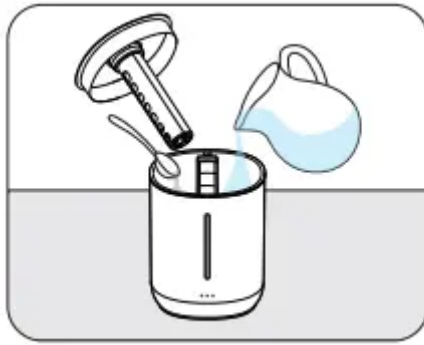
Water Tank Cleaning

Follow the steps to clean the water tank:

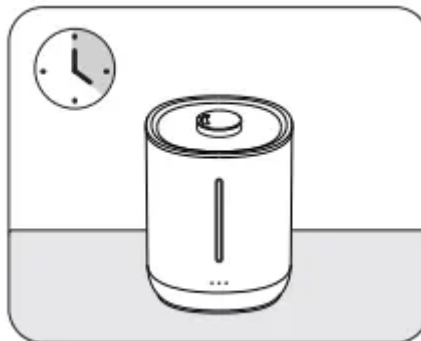
1. Turn off the humidifier, unplug from the wall outlet.



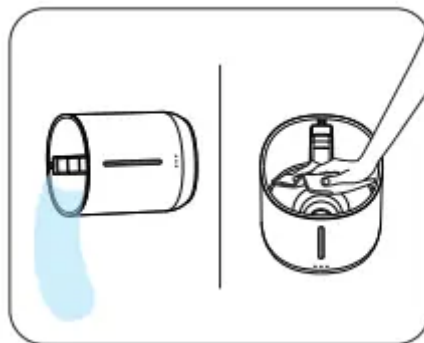
2. Remove the tank cover, fill the tank with tap water, add one teaspoon of white vinegar or other cleaning agents to remove possible buildup



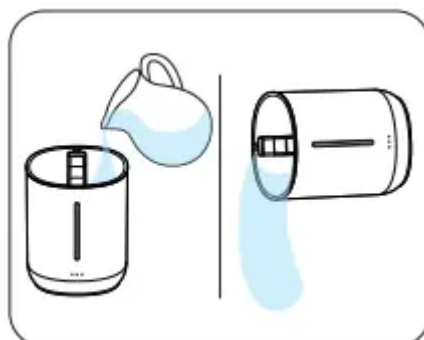
3. Leave it still for 15-20mins.



4. Empty the tank, wipe clean the interior with a soft, clean cloth especially the nebulizer at the bottom.



5. Add tap water to tank and clean thoroughly, repeat a few times until the smell of white vinegar or other agents becomes unobservable. Dry thoroughly with a soft cloth.



Notes:

- For a deep cleaning of the Top Cap part, rotate the Top Cap counterclockwise to detach from the Tank Cover, pull out the Mist Shaping Ring. Take the Float out. Wash all parts under tapwater thoroughly and wipe clean. Pay attention to the direction of the Mist Shaping Ring and the Float when reassembling all parts.
- Pay attention when lifting the top cover in case of water drops on the surface.
- Empty water from the water tank away from the air outlet.
- The ceramic disc should not come in contact with any hard or sharp objects.
- To remove possible buildup, rinse with a white vinegar and water solution.
- Dry thoroughly with a soft cloth.
- Do not use strong cleaning agents.
- Make sure the power cord and plug are let dry before next use.

SPECIFICATIONS

Model	TPHM002
Water Tank Material	PP
Working Voltage	AC110V, 60Hz
Power Consumption	25W
Water Tank Capacity	2.8L / 94oz
Mist Level	3 levels (Low / Medium / High)
Run Time per Tank	Up to 12H (high mist level) Up to 16H (medium mist level) Up to 24H (low mist level)
Timer Options	3 options (2H / 4H / 8H)
Low Water Level Protection	Supported
Dimensions	7.6 x 7.1 x 9.8in
Net Weight	2.6lbs



TROUBLESHOOTING

<p>Water vapor and humidity are not produced.</p>	<ul style="list-style-type: none"> • Power plug - unplug cord from the humidifier, try again. • Power failure - when power is restored, try again. • Tank cover installation - make sure tank cover is attached correctly. • The surface of the nebulizer is dirty - wipe with soft cloth.
<p>Air blows but water vapor is not produced.</p>	<ul style="list-style-type: none"> • Dirty tank - wash out tank and try again. • Dirty nebulizer – wipe clean the part with a soft cloth. • Use of distilled water - 3 pinches of salt must be added to distilled water, stir to ensure thorough mixing. Caution: Add salt only by pinch, because too much salt added to the water can cause excessive boiling, blowing of fuse, or a stuck circuit breaker.
<p>Humidity level is low.</p>	<ul style="list-style-type: none"> • The surface of the nebulizer is dirty - Wipe the part with a soft cloth. • The water in the unit is too cold - replace with cool, but not cold, water.
<p>The mist has a bad smell.</p>	<ul style="list-style-type: none"> • Poor maintenance or dirty water - clean the tank thoroughly according to instructions above and fill with fresh water.
<p>White dust is forming on nearby furniture.</p>	<ul style="list-style-type: none"> • Hard water may deposit a dust-like residue. In addition, dust in the air may settle due to the added humidity in the room.

CHECK THE FOLLOWING IF YOUR HUMIDIFIER IS NOT WORKING CORRECTLY:

Unit has stopped working.	<ul style="list-style-type: none">• Low to no water - unplug unit and refill tank.
Water is accumulating outside of unit or area surrounding unit.	<ul style="list-style-type: none">• Saturation of humidity - lower mist control setting.• Unit not level - unplug and place on level surface. Raise unit on a water-resistant level surface 2-3 feet off of floor.
Water dripping when refilling.	<ul style="list-style-type: none">• Loose cap - tighten cap by slightly moving until it snaps into place.• Water remaining on bottom of tank - wipe tank or tilt to drain before transporting.
Increased noise level.	<ul style="list-style-type: none">• Unit on uneven surface - unit must be placed on a flat, hard surface. Make sure it is NOT placed on a soft or absorbent surface.
Tank light flashing after 3 beeps.	<ul style="list-style-type: none">• Indicates low water - unplug and refill tank.

Warning

This content is compiled from multiple sources and is provided for reference purposes only. It may not be complete or fully applicable to all situations. If you are unable to resolve your issue, please contact the product manufacturer or an authorized service provider for official support.