

General Care and Safety Guide

CAUTION: In order to avoid a hazard due to inadvertent resetting of the thermal cut-out, this appliance must not be supplied through an external switching device, such as a timer, or connected to a circuit that is regularly switched on and off by the utility.

- This appliance is not intended for use by persons (including children) with reduced physical, sensory or mental capabilities or lack of experience and knowledge, unless they are supervised or have been given instruction concerning the use of the appliance by a person responsible for their safety.
- Children should be supervised to ensure that they do not play with the appliance.
- If the supply cord is damaged, it must be replaced by the manufacturer, its service agent or similarly qualified persons in order to avoid a hazard.

WARNING: You must not cover this appliance. Covering this appliance presents fire risk and will activate the safety fuse; permanently disabling the unit.

WARNING: Do not use this appliance in small rooms when they are occupied by persons not capable of leaving the room on their own, unless constant supervision is provided.

WARNING: To reduce the risk of fire, keep textiles, curtains, or any flammable material a minimum distance of 1 metre from the air outlet. General Care and Safety Guide

- Use only the voltage specified on the rating label of the appliance.
- Keep all objects at least 1 metre from the front and sides of the appliance.
- This appliance is intended for household use only and not for commercial or industrial use.
- Indoor use only.
- Use this appliance only as described in this manual. Any other use is not recommended by the manufacturer and may cause fire, electric shock or injury.
- Do not use the appliance if it has been dropped or damaged.
- The common cause of overheating is deposits of dust or fluff in the appliance. Ensure these deposits are removed regularly by unplugging the appliance and vacuum cleaning the air vents and grills.
- Never use the appliance to dry clothes.
- Always unplug appliance when not in use.
- When the appliance has been unpacked, check it for transport damage and ensure all parts have been delivered. If parts are missing or the appliance has been damaged, contact the Customer Services Team.
- Do not use if there are visible signs of damage to the appliance.

- Do not connect the appliance to mains supply until completely assembled and adjusted.
- Ensure hands are dry before handling the plug or main unit.
- Ensure appliance is on a flat, stable, heat-resistant surface.
- Do not operate with cord set coiled up as a heat build up is likely, which could be sufficient to become a hazard.
- Carry out regular checks of the supply cord to ensure no damage is evident
- Do not operate this appliance with a damaged cord, plug or after the appliance malfunctions or has been dropped or damaged in any manner. Take to a qualified electrical person for examination, electrical service or repair.
- Do not twist, kink or wrap the cord around the appliance, as this may cause the insulation to weaken and split. Always ensure that all cord has been removed from any cord storage area and is unrolled before use.
- It is recommended that this appliance is plugged directly into the wall socket. Power boards are not rated to supply power to high wattage appliances.
- A correctly specified, undamaged extension cord may be used with this appliance provided it is used in a safe manner.
- Do not remove plug from power socket until the appliance has been switched off.
- Do not remove plug from power socket by pulling cord; always grip plug.
- Don't place appliance on bedding or on thick & long carpet where the openings may get blocked.
- Switch off and use handle provided when moving
- Do not place appliance close to radiant heat source.
- Do not insert or allow foreign objects to enter any ventilation or exhaust opening, as this may cause an electric shock, fire or damage to the appliance.
- Do not sit on the appliance.
- Do not use abrasive cleaning products on this appliance. Clean with a damp cloth (not wet) rinsed in hot soapy water only. Always remove plug from the mains supply before cleaning.
- Do not operate in areas where petrol, paint or other flammable liquids are used or stored.
- Do not use this appliance in the immediate surrounds of a bath, a shower, or a swimming pool or other liquids.
- The appliance must not be immersed in any liquids.
- There are no user serviceable parts installed in the unit.
- Do not place the unit in wardrobes or other enclosed spaces as this may cause fire hazards.

- This unit is not supposed to be used in or around locations where foodstuffs, works of art or delicate articles of science, etc. are stored.
- If your appliance does not work, or is not working properly, contact the place of purchase or the Customer Services Team.

Components

Heater x 1



Screw pack components

Drill bits x 2 (1 x 7mm for plasterboard or wooden walls, 1 x 8mm for masonry walls)

Mounting Plugs x 4

Screws x 4

Screw Caps x 4



Wall Mounting & Position Instructions

Always choose a safe location for the heater, keeping in mind the safety precautions outlined below. The heater needs to be mounted so that the power switch is in the top right hand corner. Do not run the power cord behind the heater. This will determine where you mount the heater in relation to where the power socket is located.

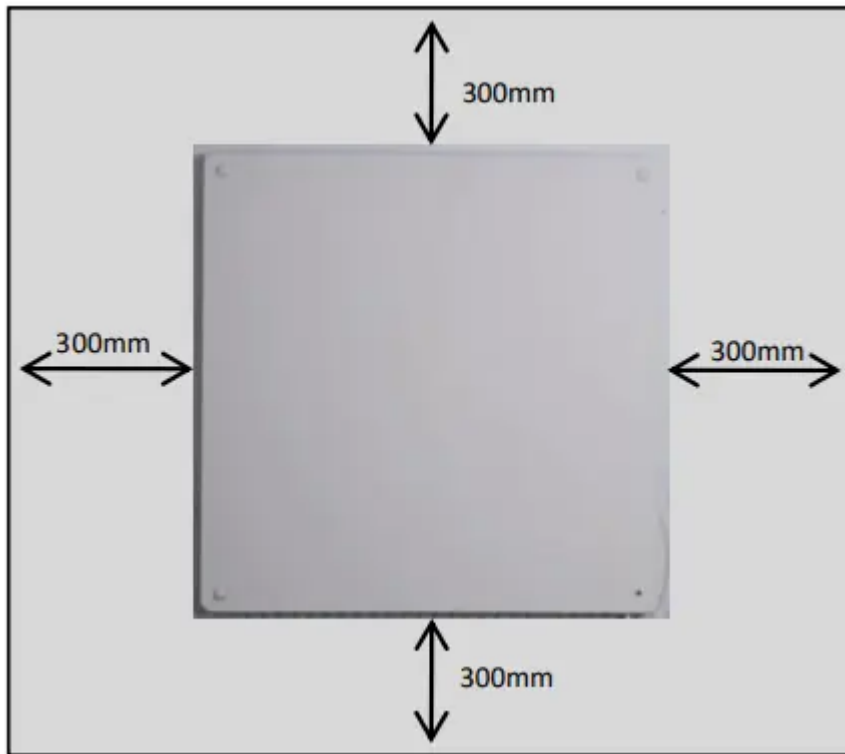
NOTE: Your Goldair EcoPanel Heater should be installed with at least 300mm clearance from the floor and any other surrounding parts including other appliances, side walls, ceilings, shelves and soft furnishings.

HEATER MUST NOT BE LOCATED IN FRONT OF A SOCKET OUTLET

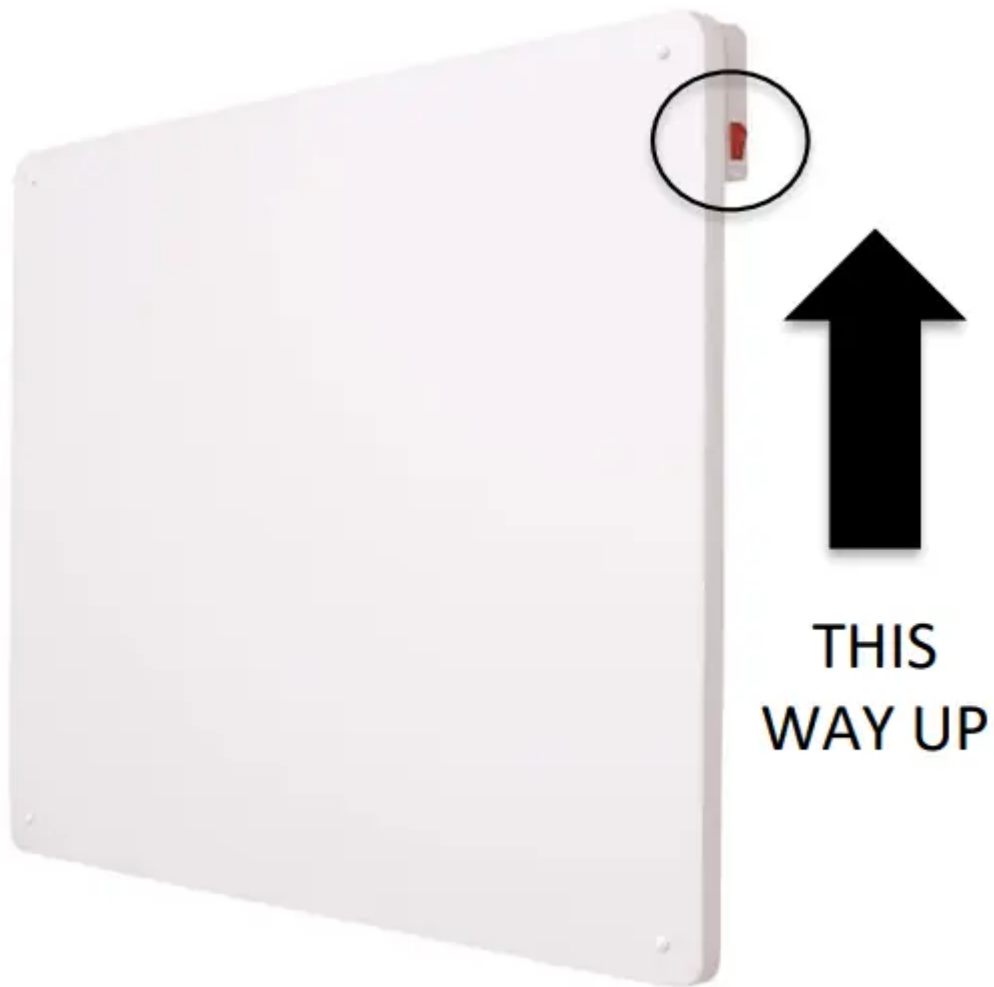
DO NOT RUN THE POWER CORD BEHIND THE HEATER

WALL MOUNTED HEATERS ARE ONLY TO BE MOUNTED ON WALLS THAT COMPLY WITH CURRENT AS/NZS SPECIFICATIONS & BUILDING REGULATIONS

MAKE SURE THE APPLIANCE IS UNPLUGGED AND POWER SWITCHES ARE OFF



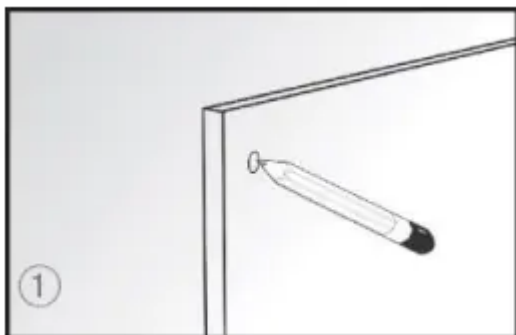
The appliance must not be located immediately below a socket outlet. The panel heater must be mounted on the wall with the power switch in the top right hand position as shown below.



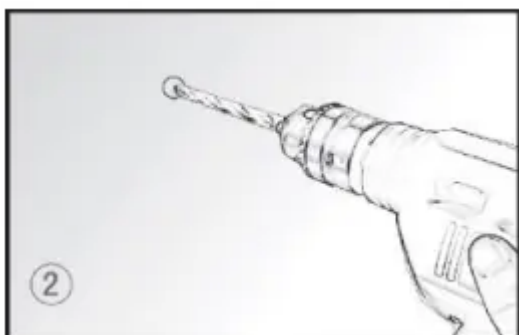
Note: Do not run power cord behind the heater.

NOTE: Your Panel Heater should be installed with at least 300mm clearance from the floor and any other surrounding parts including other appliances, side walls, ceilings, shelves and soft furnishings.

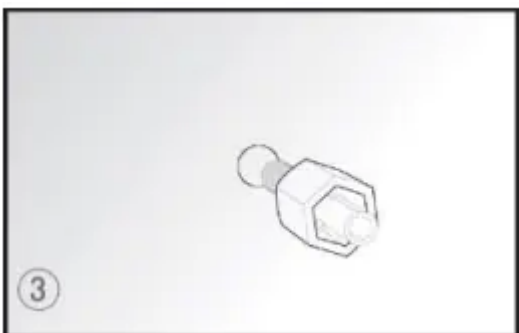
1. Mark the positions of the four holes to be drilled on the wall. Ensure there is a 300mm clearance on all sides of the heater.



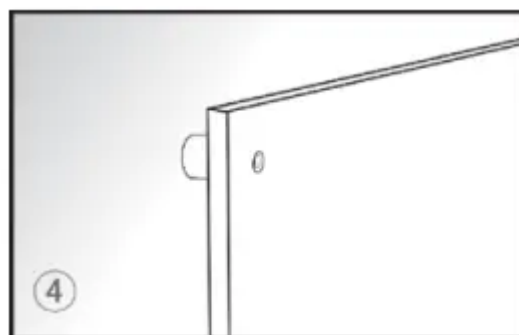
2. Drill holes with an appropriate drill bit for the wall surface you are mounting the heater on to.



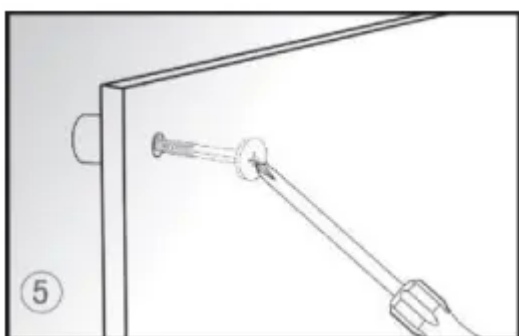
3. Insert the plastic wall plugs into the holes.



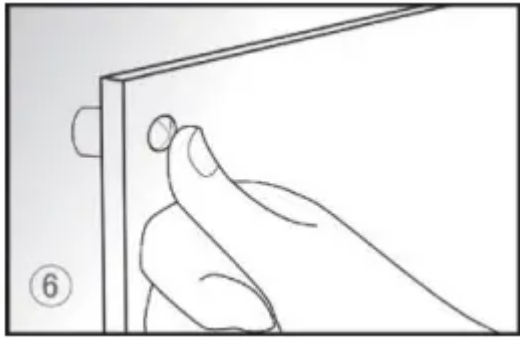
4. Install the panel heater onto the 4 wall plugs matching the 4 holes on the heater.



5. Screw the 4 screws into the plastic wall plugs.



6. Put the caps onto the end of the screws. It is recommended to use some normal glue to stick the caps onto the screw heads.



To remove the unit from the wall, simply remove the screw caps, unscrew the screws and take the heater down.

Operating Your Heater

Always choose a safe location for the heater, keeping in mind the safety precautions outlined. Ensure all packaging has been removed from the unit before use. Please follow the below instructions.

WARNING: In order to avoid overheating or fire, do not cover the heater.

WARNING: Keep all objects at least 1 metre from the front and 300mm from the sides of the appliance.

WARNING: Do not use this heater with a programmer, separate timer, remote-control system or any other device that switches the heater on automatically, since a fire risk exists if the heater is covered or positioned incorrectly.

WARNING: Never leave this heater unattended when in use.

WALL MOUNTED HEATERS ARE ONLY TO BE MOUNTED ON WALLS THAT COMPLY WITH CURRENT AS/NZS SPECIFICATIONS & BUILDING REGULATIONS

Note: Do not run power cord behind the heater.

Once the heater is in a safe operating position and all switches are in the off position, insert the power plug into the mains outlet and switch on.

CAUTION: Ensure the power cord is not tight because if pulled it may partially pull the plug from the socket. A partially inserted plug will overheat the plug and socket and could result in fire.

Your Panel Heater will provide background warmth. This Panel Heater is designed to take the chill off the room.

The surface of this Panel Heater can be painted with good quality paint (acrylic or enamel).

Decorating tip: All wall mounted heaters may cause paint to discolour or wallpaper to lift.

HEATER CONTROL

Use the On/Off switch on the top right hand side of the heater to turn your heater on and off.

SETTING THE THERMOSTAT

IMPORTANT: The temperature sensor (E) needs to be pulled out approximately 35mm to better read the ambient temperature.

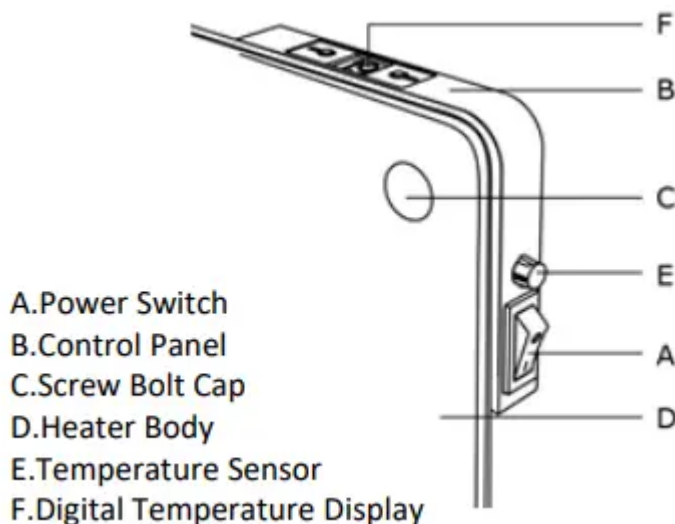
When you first turn the heater on, the digital display will default to number 06. Within a few seconds it will switch to the number that is closest to the current ambient room temperature.

The most effective way to set the temperature, is to press the 'plus' button until the digital display reads 10. Within a few seconds the digital display will revert back to the number that is closest to the current ambient room temperature. But the setting will have been stored in the memory.

The heater will start to work and the digital display will start to increase from default 06 setting to 10 setting (max). Depending on other influences (open doors, size of room, house insulation, outside temperature) this could take some time.

The temperature will continue to rise. When you are comfortable with the temperature in your room, take note of the digital display reading (e.g. 07) and then using the 'minus' button, reduce the thermostat to that number. The heater will now cycle on and off to maintain the number you have set.

Note: If you turn the heater off the temperature will revert to the default (06) and you may need to follow the process above again when you turn the heater back on.



SAFETY DEVICES

This appliance has two protection devices:

- Resettable Thermal Links - this will automatically disconnect the power to the appliance at a pre-set overheat temperature. After cooling down it will reset and power on again. If this occurs, investigate what is causing the appliance to overheat.
- Thermal Fuse - this disconnects the appliance permanently in case of overheating. (It is non resettable).

CAUTION: The appliance generates heat during use. Precautions must be taken to prevent the risk of burns, scalds, fires or other damage to persons.

CARE AND CLEANING

- The heater requires regular cleaning to ensure trouble free operation:
- Unplug the heater from the mains supply before cleaning.
- Ensure that the heater has been allowed to cool down completely before cleaning.
- Use a damp cloth (not wet) to wipe the exterior of the heater to remove dust and dirt.
- Never use solutions such as petrol, thinners or polishing agents.
- Ensure the heater is dry before plugging back into the mains supply.
- Do not attempt to dismantle the heater.
- There are no user serviceable parts. For service or repair, contact an authorised electrical service technician.

Warning

This content is compiled from multiple sources and is provided for reference purposes only. It may not be complete or fully applicable to all situations. If you are unable to resolve your issue, please contact the product manufacturer or an authorized service provider for official support.