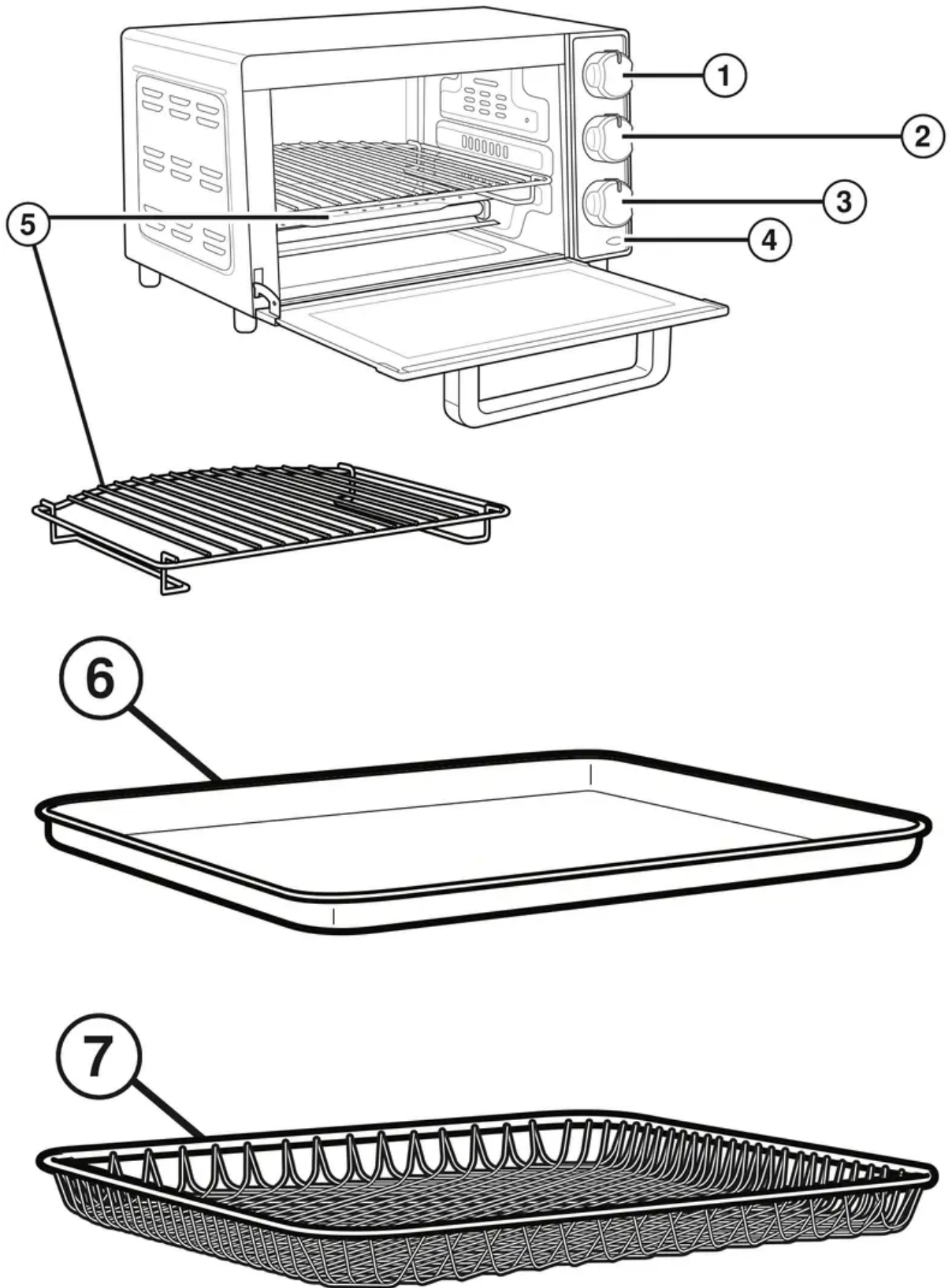
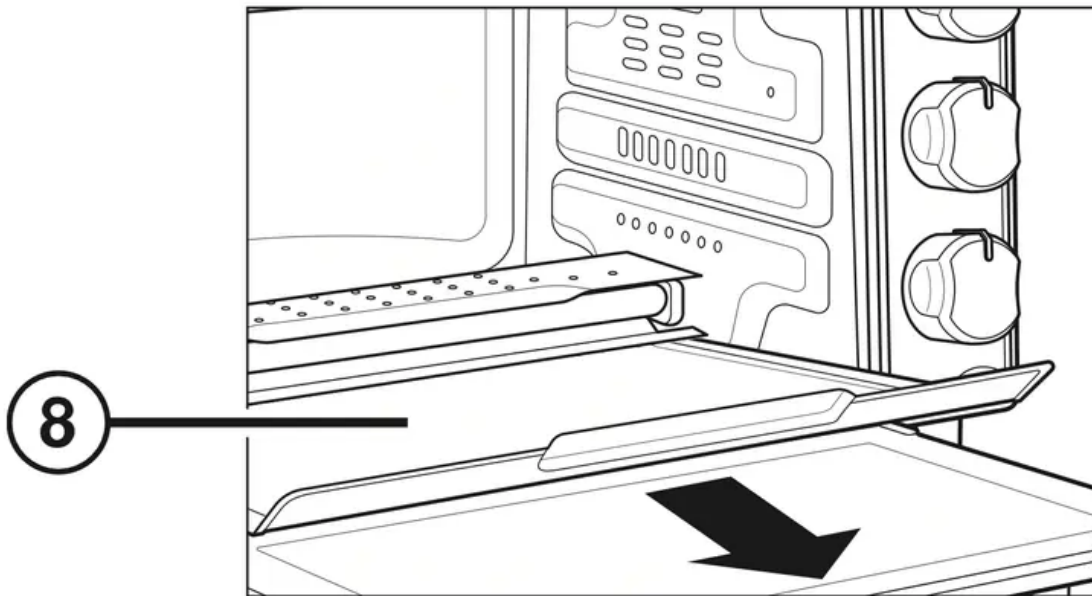


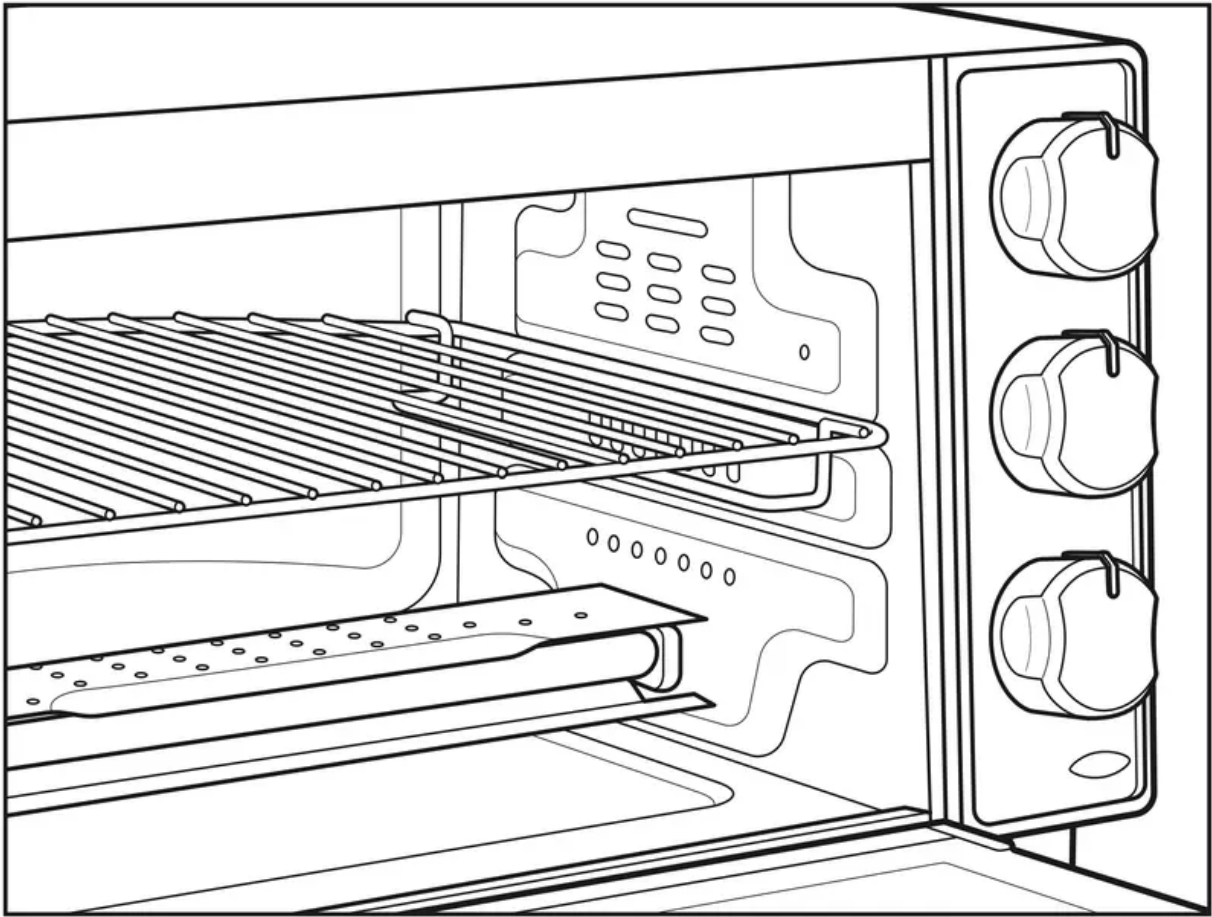
Parts and Features





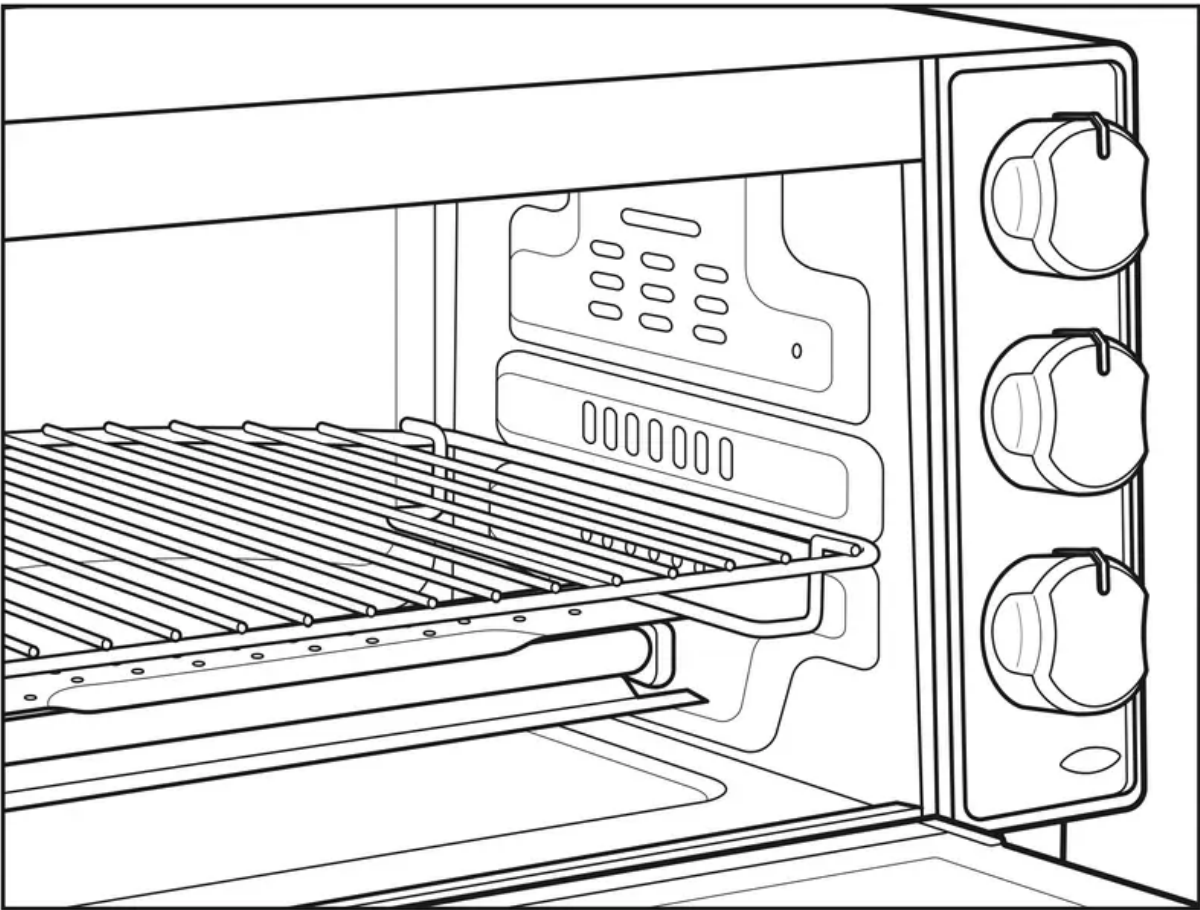
1. Temperature Knob
2. Function Knob
3. Toast/Timer Knob
4. ON Indicator Light
5. Oven Rack
6. Baking/Broiling Pan
7. Air Frying Basket
8. Slide-Out Crumb Tray

Top Rack Position: Broiling, Toasting & Air Frying (small, flat foods)



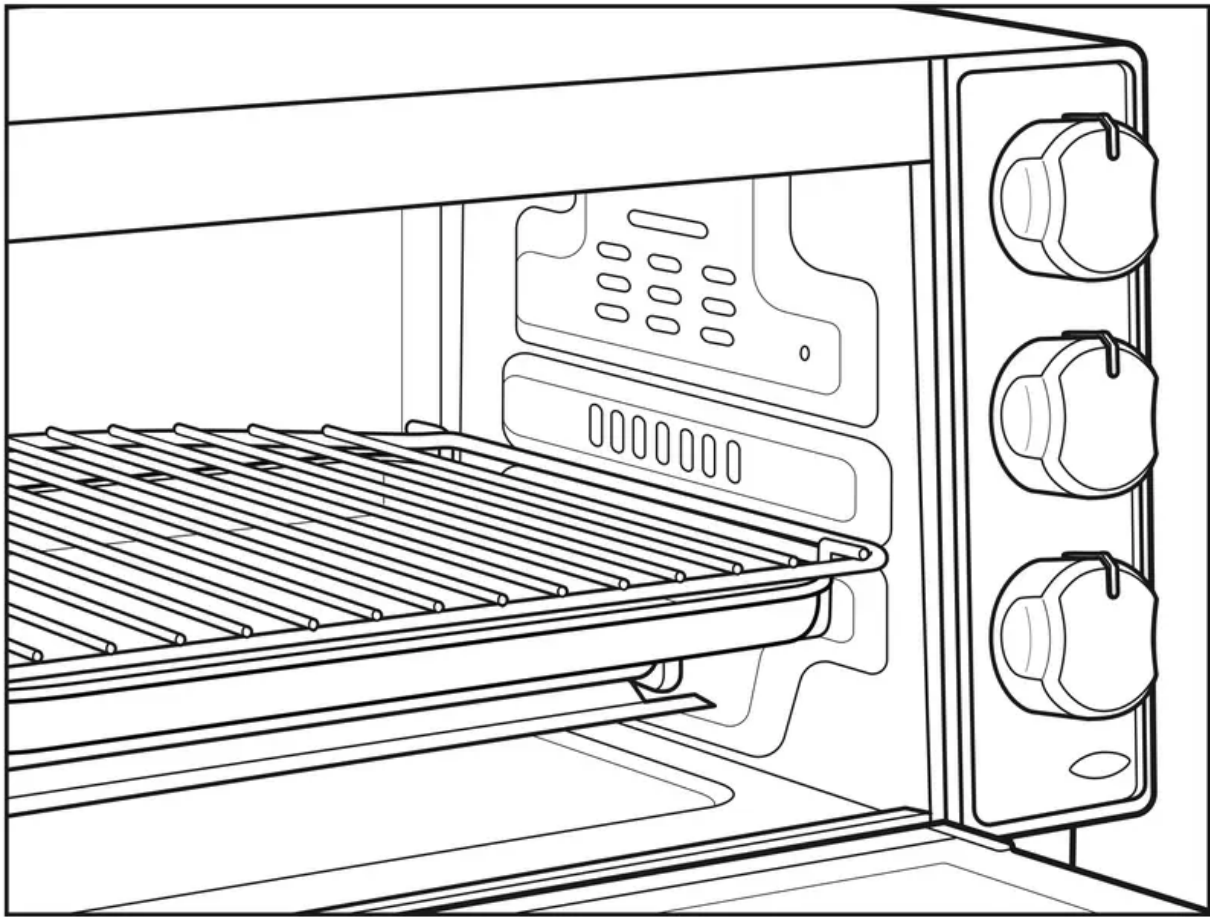
Bottom Rack Position: Baking, Broiling & Air Frying (larger foods)





Baking/Broiling Pan slides under oven rack.





How to Use

WARNING - Fire Hazard.



- If contents ignite, do not open oven door. Unplug oven and allow contents to stop burning and cool before opening door.
- Do not operate oven unattended.
- Do not use with oven cooking bags.
- Do not heat foods in plastic containers.
- Do not heat taco shells in toaster oven. Always use full-size conventional oven.
- Always allow at least 1 inch (2.5 cm) between food and heating element.
- Follow food manufacturer's instructions.
- Always unplug oven when not in use.
- Regular cleaning reduces risk of fire hazard.

Before first use: Most heating appliances produce an odor and/or smoke when used the first time. Plug Oven into an outlet. Turn Temperature Knob to 450°F (230°C). Heat at this temperature for 10 minutes. Odor should not be present after this initial preheating. Wash Air Frying Basket, Baking/ Broiling Pan, and Oven Rack before using.

Stay On Function


The Oven can be set to stay on by turning Timer to Stay On while pressing and holding buttons on side of Knob.

Air Fry Mode ()

- Use Air Fry mode to crisp foods using little added oil.
 - Rack position used to air fry depends on the size of the food to be cooked. Keep at least 1 inch (2.5 cm) between food and heating elements.
 - Place larger food in the bottom rack position.
 - Larger/thicker foods may need to be flipped, stirred, or rotated halfway during cooking.
 - Air Fry Mode cooks and browns evenly by circulating forced hot air which crisps food.
 - Slice or cut fresh foods in uniform size pieces to ensure even cooking.
 - Check food for doneness before recommended packaging cook time.
 - For faster cooking, preheat Oven to reduce cooking time.
1. Plug into outlet. Rotate Function Knob to Air Fry .
 2. Air Frying Basket: Arrange foods in a single, even layer and avoid overfilling basket. Insert Oven Rack so food is at least 1 inch (2.5 cm) from heating element. Slide Baking/ Broiling Pan under Oven Rack to catch drippings. Then place Air Frying Basket with food on Oven Rack.
NOTE: Use bread crumb coatings or lightly spritz with oil. Sauces or batter coatings are not appropriate for air frying..
 3. Turn Temperature Knob to Air Fry/Toast/Broil position.
 4. Rotate Timer clockwise past 10, then to the desired cooking time. Or, rotate to Stay On while pressing and holding buttons on side of Knob.
 5. If time is selected, Timer will sound when selected time is complete. If Stay On is selected, rotate Timer to OFF () to end cycle at any time.
 6. Unplug.

Bake Mode ()


Use Bake mode for cakes, casseroles, cookies and roasting meats, poultry or vegetables. Place Oven Rack in top or bottom position. Preheating Oven for 5 minutes is necessary for Bake mode.

1. Plug into outlet. Turn Temperature Knob to desired temperature, then rotate Function Knob to Bake .

2. Rotate Timer clockwise past 10, then back to “dark toast” to preheat Oven for 5 minutes before beginning to bake.
3. After Oven is preheated, set Timer to desired time by rotating clockwise past 10, then to the desired baking time. Or, rotate to Stay On while pressing and holding buttons on side of Knob.
4. Rotate Timer to OFF (**O**) to end cycle at any time.
5. Unplug.


Broil Mode ()

Place Oven Rack in Oven. Top rack position for faster broiling times. Bottom rack position for browning casserole tops, toasting sandwiches, or melting cheese on bread, or for foods needing longer broiling times, like chicken and thick cuts of meat. Place Baking/Broiling Pan on Oven Rack. Place in Oven. DO NOT PREHEAT OVEN. Food must be a minimum of 1 inch (2.5 cm) from heating elements.

1. Plug into outlet. Turn Temperature Knob to Air Fry/Toast/Broil and Function Knob to Broil .
2. Rotate Timer clockwise past 10, then to the desired broiling time. Or, rotate Timer to Stay On while pressing and holding buttons on side of Knob. Turn foods when browned or halfway through cooking time. Oven broils on high temperature and may not be adjusted.
3. Rotate Timer to OFF (**O**) to end cycle at any time.
4. Unplug.

Toast Mode ()

Use for browning and toasting breads, bagels, and English muffins. Place food cut/split side facing up. This will toast cut/split side more than outside of food. Rack should be in top position.

1. Plug into outlet. Turn Temperature Knob to Air Fry/Toast/Broil and then rotate Function Knob to Toast .
2. Select shade of browning by turning Timer clockwise past 10, then back to desired toast color. A bell will sound when Toast cycle is complete.
3. Rotate Timer to OFF (**O**) to end cycle at any time.
4. Unplug

TIP: The number of slices of bread and bread freshness will affect toast color. For example, toasting four slices of bread will require a darker toast color setting than two slices of bread.

Adjust Toast based on desired color and number of slices.

Test Kitchen Tips:

- Bake foods, such as pizza, on the bottom rack position. Place food directly on Oven Rack or in Baking/Broiling Pan.
- When toasting only two slices of bread, place bread in center of toasting area on the bottom rack position to get even toasting on top and bottom.
- Do not totally enclose foods in aluminum foil. Foil can insulate foods and slow down heating.
- Preheating before Air Frying can shorten cooking time and improve crispness.
- Air Frying Basket: Arrange foods in a single, even layer and avoid overfilling the basket.
- Turn, flip or stir foods halfway through cooking time for even cooking.
- Slice or cut fresh foods in uniform size pieces to ensure even cooking.
- Use bread crumb coatings or lightly spritz with oil. Sauces or batter coatings are not appropriate for air frying.
- Lining the baking pan underneath the basket makes cleanup easier. Do not line the air fry basket with parchment paper or foil as it blocks air flow to the food.

Care and Cleaning

WARNING - Electrical Shock Hazard: Do not clean with metal scouring pads. Pieces can break off pad and touch electrical parts.

Oven should be cleaned regularly for best performance and long life. Regular cleaning will also reduce the risk of fire hazard.

1. Unplug and allow to cool completely.
2. To clean inside of Oven, wipe Oven walls, bottom of Oven, and glass door with a damp, soapy cloth. Repeat with a damp, clean cloth. For stubborn stains, use a plastic scouring pad.
3. Wipe outside of Oven with a damp cloth. Do not use abrasive cleansers or metal scouring pads.
4. Wash Slide-Out Crumb Tray, Baking/Broiling Pan, Air Frying Basket, and Oven Rack in hot, soapy water. Rinse and dry.

Troubleshooting

Oven will not heat.

- Check to make sure electrical outlet is working and Oven is plugged in. Turn Temperature Knob to 350°F (177°C). Turn Function Knob to Bake; then turn Timer counterclockwise to Stay On while pressing and holding buttons on side of Knob.

Moisture forms on inside of Oven door when toasting.

- This is normal when toasting in an Oven.
Moisture is slower to escape from an Oven than from a toaster. The amount of moisture will differ between fresh bread, bagels, and frozen pastries.

An odor and smoke come from Oven.

- Smoke and odor are normal during first use of most heating appliances. These will not be present after initial heating period.

Oven will not toast.

- Check to make sure outlet is working and Oven is plugged in. Turn Temperature Knob to Air Fry/ Toast/Broil. Turn Function Knob to Toast; then rotate Timer clockwise past 10 and then back to the desired toast color.

Some foods burn and some are not done.

- Adjust Oven Rack position to center food in Oven.
- Adjust Oven temperature or cooking time for best results with your recipes.

IMPORTANT SAFEGUARDS

WARNING - Fire Hazard.

- If contents ignite, do not open oven door. Unplug oven and allow contents to stop burning and cool before opening door.
- Do not operate oven unattended.
- Do not use with oven cooking bags.
- Do not heat foods in plastic containers.
- Do not heat taco shells in toaster oven. Always use full-size conventional oven.
- Always allow at least 1 inch (2.5 cm) between food and heating element.
- Follow food manufacturer's instructions.
- Always unplug oven when not in use.
- Regular cleaning reduces risk of fire hazard.

When using electrical appliances, basic safety precautions should always be followed to reduce the risk of fire, electric shock, and/or injury to persons, including the following:

1. Read all instructions.
2. This appliance is not intended for use by persons (including children) with reduced physical, sensory, or mental capabilities, or lack of experience and knowledge, unless they are closely supervised and instructed concerning use of the appliance by a person responsible for their safety.

3. Close supervision is necessary when any appliance is used by or near children. Cleaning and user maintenance shall not be made by children unless they are supervised. Children should be supervised to ensure that they do not play with the appliance.
4. Do not touch hot surfaces. Use handles or knobs.
5. To protect against electrical shock, do not immerse cord, plug, or oven in water or other liquid.
6. Unplug from outlet when not in use and before cleaning. Allow to cool before cleaning appliance and putting on or taking off parts.
7. Do not operate any appliance with a damaged supply cord or plug, or after the appliance malfunctions or has been dropped or damaged in any manner. Supply cord replacement and repairs must be conducted by the manufacturer, its service agent, or similarly qualified persons in order to avoid a hazard. Visit hamiltonbeach.com for information on examination, repair, or adjustment.
8. The use of accessory attachments not recommended by the appliance manufacturer may cause injuries.
9. Do not use outdoors.
10. Do not let cord hang over edge of table or counter or touch hot surfaces.
11. Do not place on or near a hot gas or electric burner or in a heated oven.
12. Extreme caution must be used when moving an appliance containing hot oil or other hot liquids.
13. To disconnect, turn all controls to OFF (**○**); then remove plug from wall outlet.
14. Use extreme caution when removing pan or disposing of hot grease.
15. Do not clean with metal scouring pads. Pieces can break off the pad and touch electrical parts, creating a risk of electrical shock.
16. Oversize foods or metal utensils must not be inserted in an oven as they may create a fire or risk of electric shock.
17. The bread may burn. A fire may occur if toaster oven is covered or touching flammable material, including curtains, draperies, walls, overhead cabinets, paper or plastic products, cloth towels, and the like, when in operation. Do not store any item on top of the appliance when in operation.
18. Extreme caution should be exercised when using containers constructed of materials other than metal or glass.
19. Do not store any materials, other than manufacturerrecommended accessories, in this oven when not in use.
20. Do not place any of the following materials in the oven: paper, cardboard, plastic, and the like.

21. Do not cover crumb tray or any part of the oven with metal foil. This will cause overheating of the oven.
22. To turn oven off, turn timer to OFF (**O**) position. See “Parts and Features” section.
23. Do not place eyes or face in close proximity with tempered safety glass door, in the event that the safety glass breaks.
24. Always use appliance with crumb tray securely in place.
25. Do not use appliance for other than intended use.
26. Clean oven interior carefully. Do not scratch or damage heating element tube.
27. Do not operate unattended.
28. Do not operate the appliance by means of an external timer or separate remote-control system.
29. **CAUTION: HOT SURFACE.** The temperature of accessible surfaces may be high when the appliance is operating.

SAVE THESE INSTRUCTIONS

Other Consumer Safety Information

This appliance is intended for household use only.

WARNING - Electrical Shock Hazard: This appliance is provided with a polarized plug (one wide blade) to reduce the risk of electric shock. The plug fits only one way into a polarized outlet. Do not defeat the safety purpose of the plug by modifying the plug in any way or by using an adapter. If the plug does not fit fully into the outlet, reverse the plug. If it still does not fit, have an electrician replace the outlet.

The length of the cord used on this appliance was selected to reduce the hazards of becoming tangled in or tripping over a longer cord. If a longer cord is necessary, an approved extension cord may be used. The electrical rating of the extension cord must be equal to or greater than the rating of the appliance. Care must be taken to arrange the extension cord so that it will not drape over the countertop or tabletop where it can be pulled on by children or accidentally tripped over.

This appliance is equipped with a fully tempered safety glass door. The tempered glass is four times stronger than ordinary glass and more resistant to breakage. Tempered glass can break; however, it breaks into pieces with no sharp edges. Care must be taken to avoid scratching door surface or nicking edges.

Always unplug your toaster oven from the outlet when not in use.

Warning

This content is compiled from multiple sources and is provided for reference purposes only. It may not be complete or fully applicable to all situations. If you are unable to resolve your issue, please contact the product manufacturer or an authorized service provider for official support.

Document generated by [ManualsFile](#)

