

Overview

What's in the Box



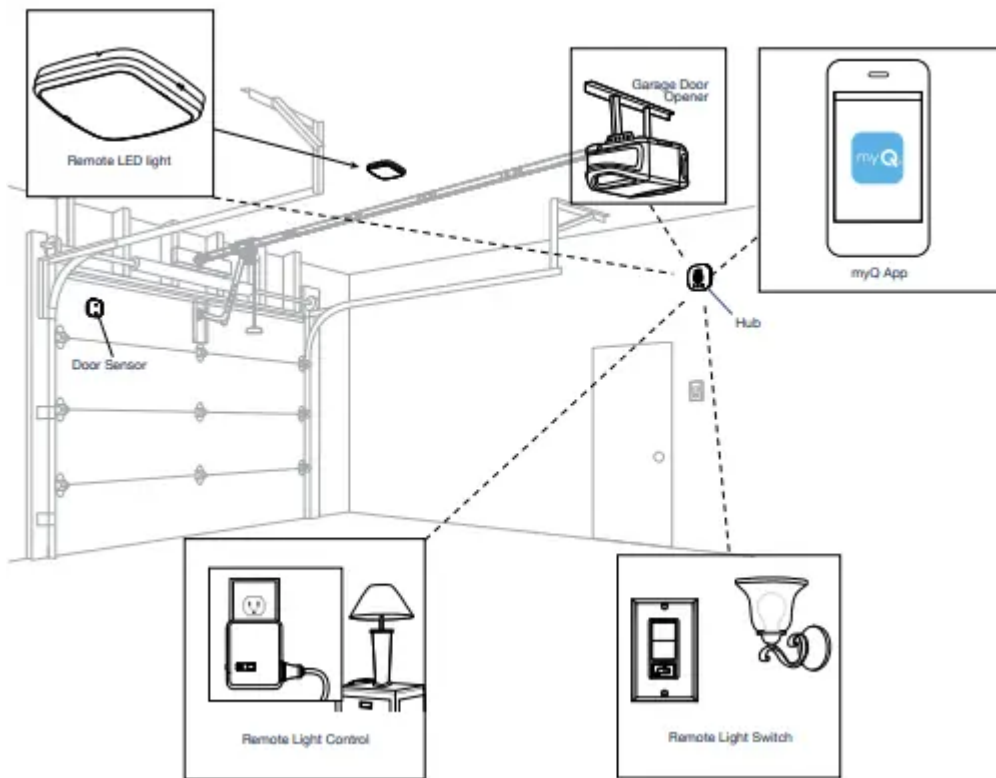
Specifications

- Smart Garage™ Control can control up to 2 garage door openers (requires a second sensor, sold separately, see Accessories and Parts.)
- Smart Garage Control can control up to 16 myQ® accessories.
- Operating temperature: -4° to 149° F (-20° to 65° C).
- For use with sectional garage doors ONLY.
- The garage door MUST have safety sensors installed.
- Smart Garage Control is NOT compatible with gate operators.

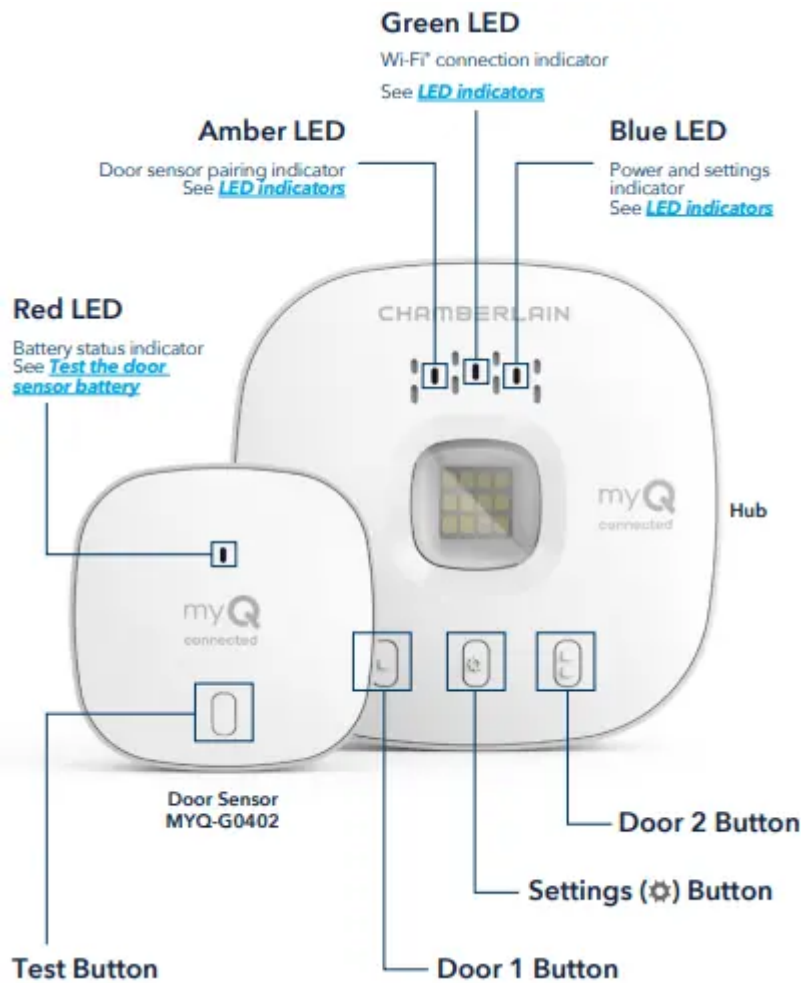
Get to Know your Smart Garage Control

Smart Garage Control lets you control up to 2 garage door openers, and 16 devices from the myQ App.

See Accessories and Parts.



Buttons and LEDs



Set Up Your Smart Garage Control

What You Need

- Access to your compatible garage door opener, check opener compatibility by manufacturer
- A strong Wi-Fi signal in the garage, see [Check Your Wi-Fi Signal](#)
- Your Wi-Fi network password
- A ladder
- A drill with 5/32" bit
- A Phillips screwdriver
- Bluetooth enabled on your mobile device

Connect Your Smart Garage Control



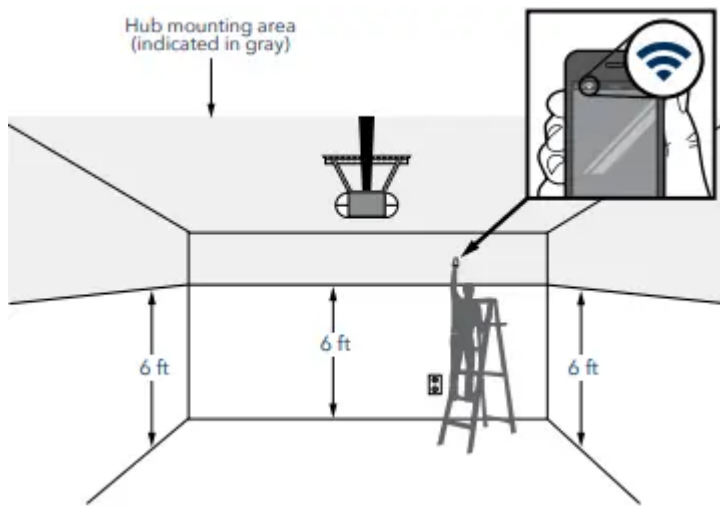
1. Download the myQ App. If you have already installed the app, make sure you have the latest version to optimize your myQ experience.
2. Set up your account and log in.
3. Tap (+) to add your Smart Garage Control.

The app will guide you through installing and connecting your Smart Garage Control and show you how to:

- a. Pair the Door Sensor to the Hub.
- b. Mount the Door Sensor.
- c. Pair the hub to your garage door opener.
- d. Mount the Hub.

Check Your Wi-Fi Signal

Make sure your device is connected to your Wi-Fi network. Hold the device where you plan to mount the hub.



If you see:



Wi-Fi signal is strong.

You're all set! Proceed to next step.



Wi-Fi signal is weak.

The hub may not connect to your Wi-Fi network. If it doesn't connect, see [How to improve your Wi-Fi signal](#).



No Wi-Fi signal.

See [How to improve your Wi-Fi signal](#).

Pair the Door Sensor to the Hub

The myQ App will pair the door sensor to the hub during initial set up.

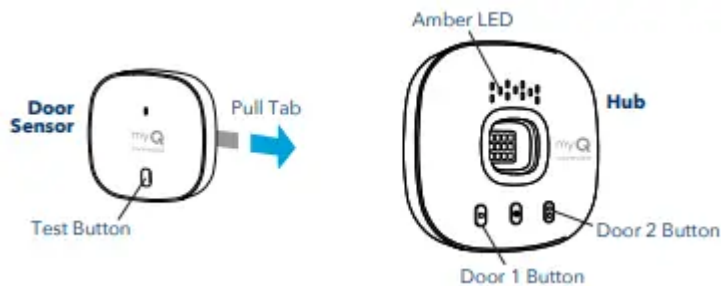
Pair a second door sensor

To add a door sensor to a second garage door opener, in the myQ App tap (+) to add a door sensor. Follow the instructions in the app.

Pair a replacement door sensor

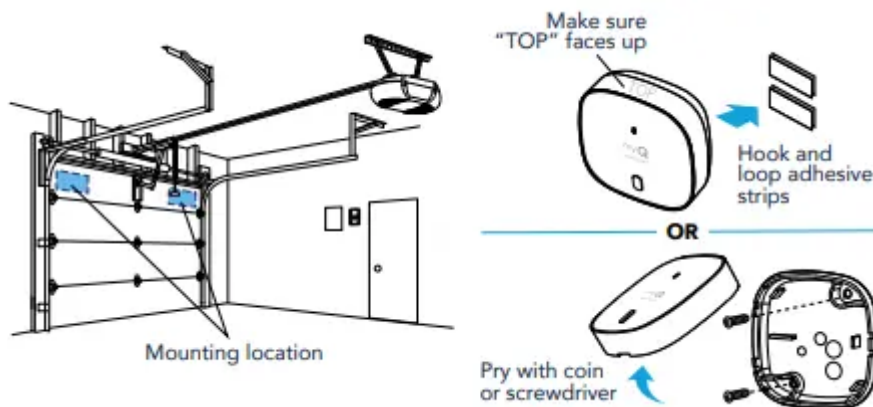
To replace an existing door sensor follow the steps below.

1. The existing sensor is programmed to the hub as door 1 or door 2. Press the test button on the existing door sensor. The hub beeps one time if the sensor is door 1, and twice if door 2.
2. On the hub, press the button for door 1 or 2, corresponding to the number of beeps heard. The LED lights solid amber.
3. Remove the pull tab from the new door sensor to activate the battery.
4. Press and release the test button. The hub will flash and beep indicating successful programming.



Mount the Door Sensor

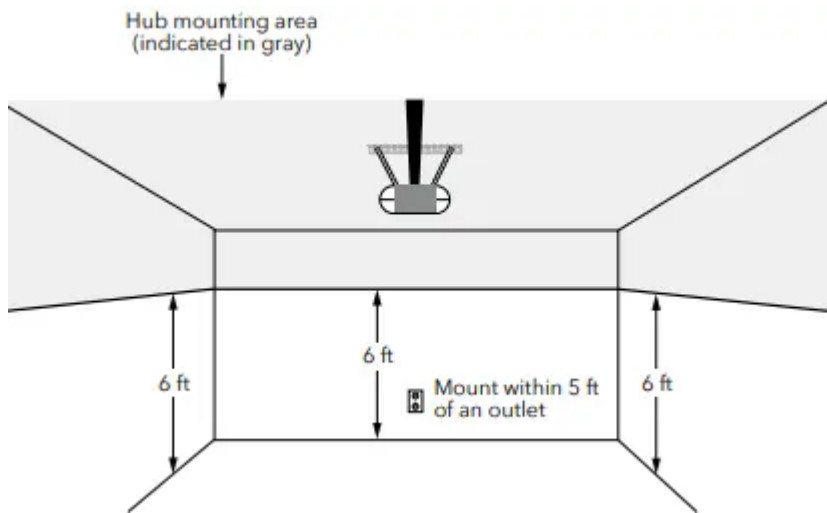
Mount the door sensor (top facing up) with the included hook and loop adhesive strips or optional screws to a clean, dry area on top panel of garage door as shown. Test the door sensor battery every 6 months.



Choose the Hub Location

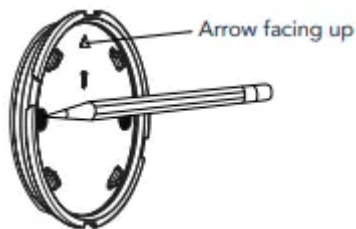
Find an area on the ceiling, a side wall, or opposing wall to the garage door that is:

- at least 6 feet above the ground.
- within 5 feet of an outlet.
- where the hub and light is visible at all times from within the garage.
- 4 feet away from any metal objects.

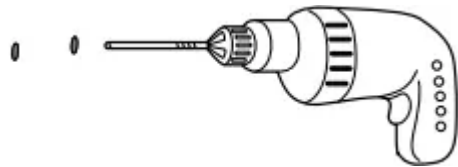


Mount the Hub

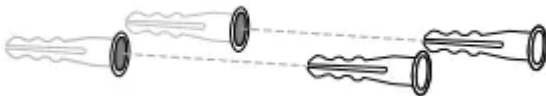
1. With the arrow facing up, use the mounting plate to mark the drill holes.



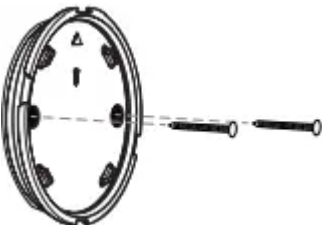
2. Drill holes using a 5/32" bit.



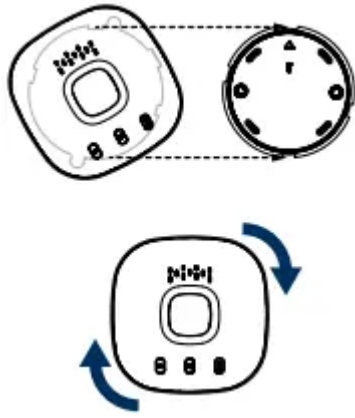
3. Insert drywall anchors until they are flush with the surface.



4. Attach the mounting plate with screws.



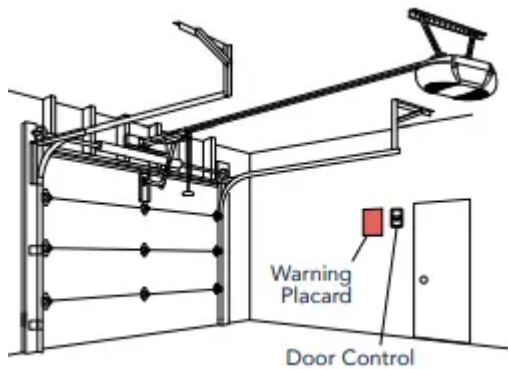
5. Place the hub on the mounting plate at an angle and rotate until secure.



NOTE: Wrap excess power cable around the hub and mounting bracket.



6. Attach the warning placard on the wall next to the door control.



How-To Video



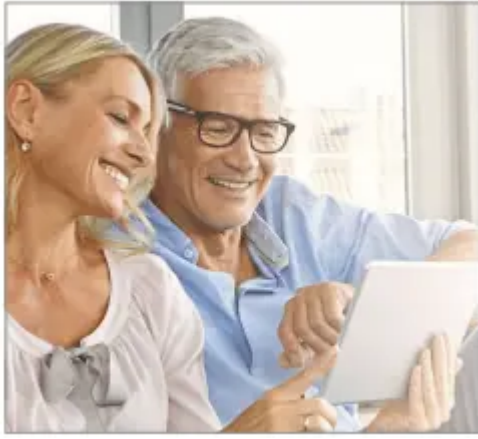
How to Install and Set Up the Chamberlain® Smart Garage Control Using the myQ App

Add myQ Smart Partners and Accessories

Your Smart Garage Control is compatible with a wide variety of interactive service providers and accessories.

See myQ smart partners or select Works with myQ in the app.

See Accessories and Parts.



Need Help?

Garage door opener compatibility

The Smart Garage Control is compatible with most garage door opener brands manufactured starting January 1, 1993 and that have photoelectric safety sensors. Check opener compatibility by manufacturer.

Router compatibility and settings

Make sure the router has the following settings:

- 2.4 GHz is enabled, 5 GHz is NOT compatible
- 802.11g or 802.11n (802.11 b/g/n) is enabled
- DHCP is enabled.
- Security is set to WPA2.
- Inbound and outbound /TCP port 8883 is open

How to improve your Wi-Fi signal

The Wi-Fi signal in a garage can be diminished because of the structure in the walls. If you have a weak signal in your garage, try the following:

- Make sure the router is within 50 ft. of the hub.
- Move the router closer to your garage to minimize interference from walls and other objects.
- Use a Wi-Fi extender, see a list of tested Wi-Fi extenders

Test the door sensor battery

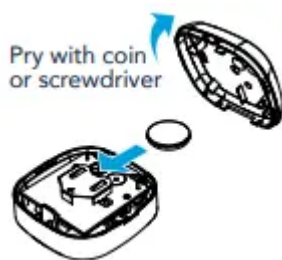
Test the door sensor battery every 6 months or if the Smart Garage Control is not working as expected.

1. Press and release the test button on the door sensor. The red LED on the door sensor should blink and the hub should beep.
2. Wait 5-10 seconds, then repeat this test 5 more times (wait 5-10 seconds between each test).
3. If the LED doesn't blink or the hub doesn't beep with each press, try the following:
 - Make sure you remove the pull tab from the door sensor.
 - Debris may be present on the battery. Remove the sensor cover and slide the battery out to check.
 - Replace the battery, see Accessories and Parts.

Change the door sensor battery


1. Pry the latch panel on the bottom of the door sensor with a coin or screwdriver and lift the top to remove it.
2. Using a soft non-conductive tool (such as a cotton swab), gently push the coin battery out of the clip.
3. Gently but firmly insert the new battery into the clip and replace the cover.

Dispose of batteries properly. Replace ONLY with 3V CR2450 coin batteries, see Accessories and Parts.





Erase Wi-Fi settings from the hub

Erasing the Wi-Fi settings allows you to reset the Wi-Fi settings on the hub.

1. The green LED MUST be on or blinking to erase Wi-Fi settings.
2. Press and hold the  button on the hub until the blue LED blinks.

Reset the hub to factory default

Resetting the hub to factory default will erase the Wi-Fi settings, and removes the device from the myQ account.

1. Press and hold the  button on the Wi-Fi hub until the blue LED blinks then release.
2. While the blue LED is blinking, press and hold the  button again until the blue LED pauses then blinks or beeps. The Wi-Fi hub is set to factory default.

To install and connect the hub, see [Connect Your Smart Garage Control](#).

Update my network settings in the myQ App

When you replace your router or update any of your home network settings or password, you need to update the settings in the myQ app and reconnect your Smart Garage Control.

LED indicators

The LEDs indicate the status of the Smart Garage Control.



Blinking blue and green

- The hub was unable to connect to your home's Wi-Fi router.

If unable to connect:

Check router compatibility and settings, see [Router compatibility and settings](#).

Check the Wi-Fi signal, see [How to improve your Wi-Fi signal](#).

Unplug power to the router and plug it back in.

Reset the hub, see [Reset the hub to factory default](#).



Blinking blue

- The hub is attempting to connect to your home Wi-Fi network.

If unable to connect:

Verify you entered the correct password for your home Wi-Fi network.


Make sure Bluetooth is enabled on your phone.

Check the Wi-Fi signal, see [How to improve your Wi-Fi signal](#).



Solid blue

- The hub was unable to connect to your home Wi-Fi network.

Unplug power to your hub and plug it back in. If it's not blinking blue, press and hold the  button until the LED goes to a blinking blue.

Turn off the feature in your mobile device settings to automatically switch between WiFi and mobile data.



Blinking green

- The hub was unable to connect to the myQ internet server.

If unable to connect:

Unplug power to the router and plug it back in.

Make sure router TCP/UDP port 8883 is open, see Router compatibility and settings.



Solid green

- The hub has successfully connected to the myQ server.



Solid amber

- Door button 1 or 2 has been pressed

Press the test button on the door sensor to pair the sensor with the hub.



Blinking amber

- Door sensor is pairing to the hub.

No LED

- No power to the hub.

Check the power connection.

The app says Monitor Mode

The door sensor is paired to the hub, but the garage door opener is not.

- In the myQ App tap Monitor Mode, this will attempt to pair the garage door opener to the hub. Try to open and close the garage door in the app.
- If the myQ hub is mounted on the ceiling move it to a location 6 feet off the ground, and 4 feet from any large metal objects. From the wall mounted door control, open and close the garage door twice.
- Replace the battery in the door sensor. See Test the door sensor battery.

App error messages

Close error

A close error occurs when the door is commanded to close from the app and is unable to close twice consecutively.

- Check for an obstruction in the safety sensor beam. Remove any obstructions and confirm the door opens and closes from the wall mounted door control or a remote.
- If the myQ hub is mounted on the ceiling move it to a location 6 feet off the ground, and 4 feet from any large metal objects. From the wall mounted door control, open and close the garage door twice.
- Replace the battery in the door sensor. See Test the door sensor battery.

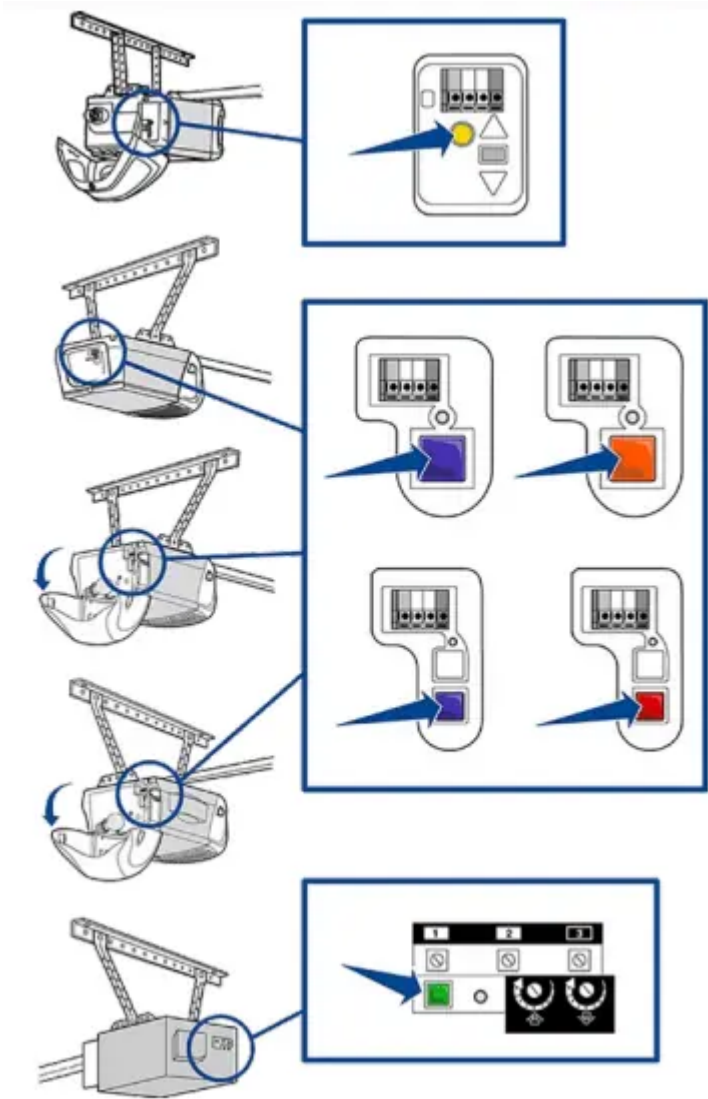
Off line error

Your Smart Garage Control has lost connection to the router and cannot be controlled by the myQ app.

- Check that the hub is plugged in and has power.
- The router may have lost connection to the Internet. Check the router and follow the instructions that came with it to reconnect to the Internet.
- Tap the error message in the app and follow the instructions.

Locate a garage door opener program or learn button

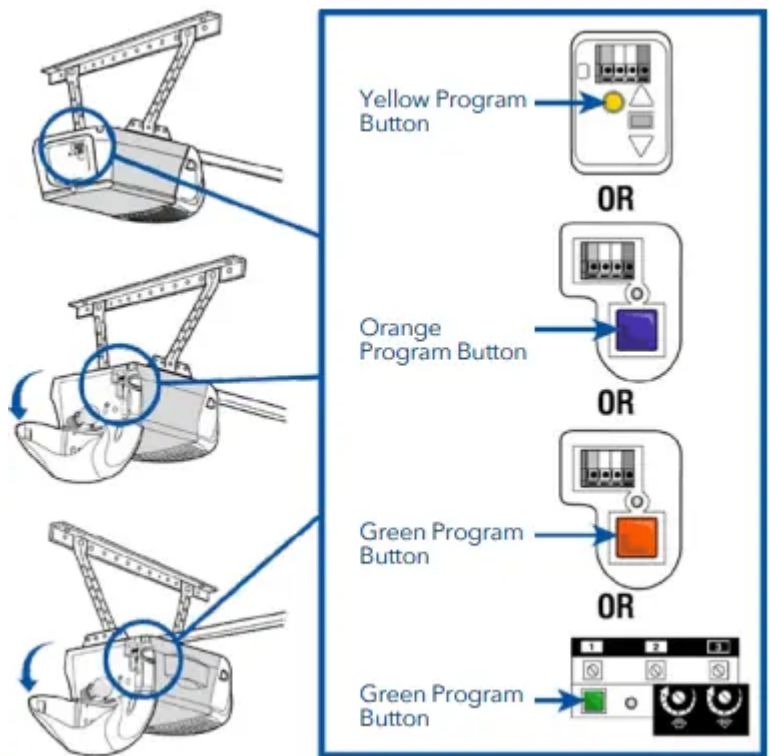
Chamberlain® Products



Locate a garage door opener program or learn button

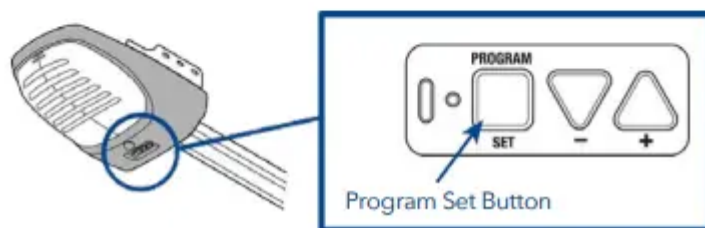
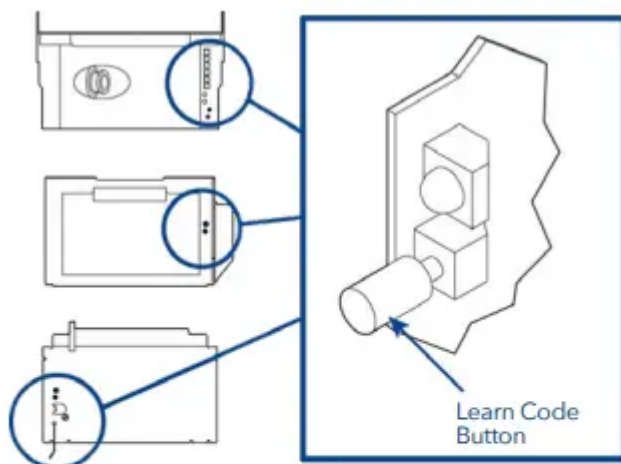
LiftMaster® Products



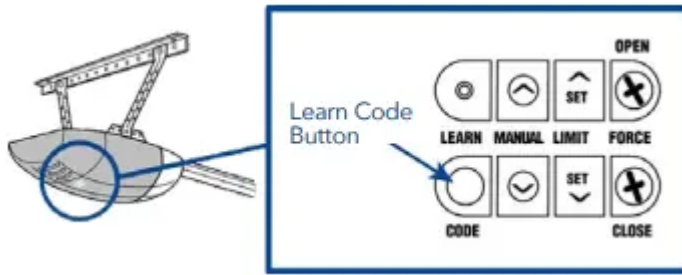


Locate a garage door opener program or learn button

Genie Products

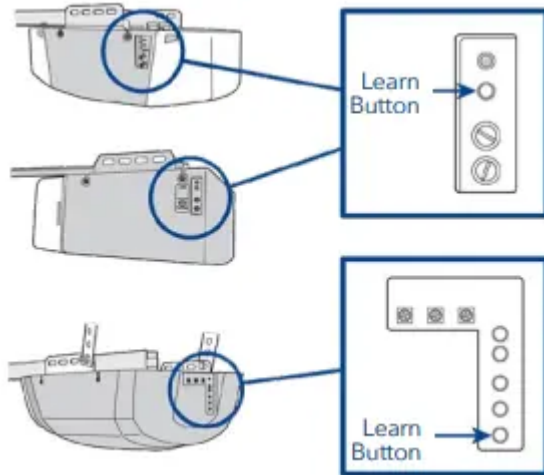


Overhead Door Products

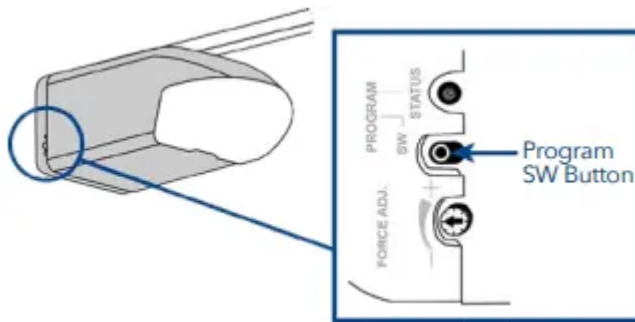


Locate a garage door opener program or learn button

Linear Products

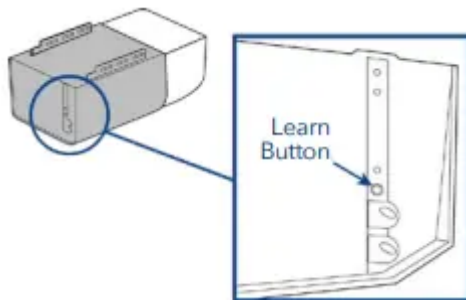


Wayne Dalton Products

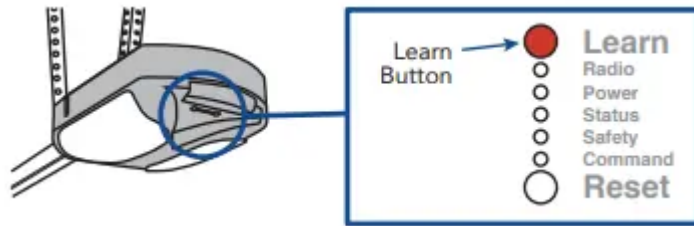


Locate a garage door opener program or learn button

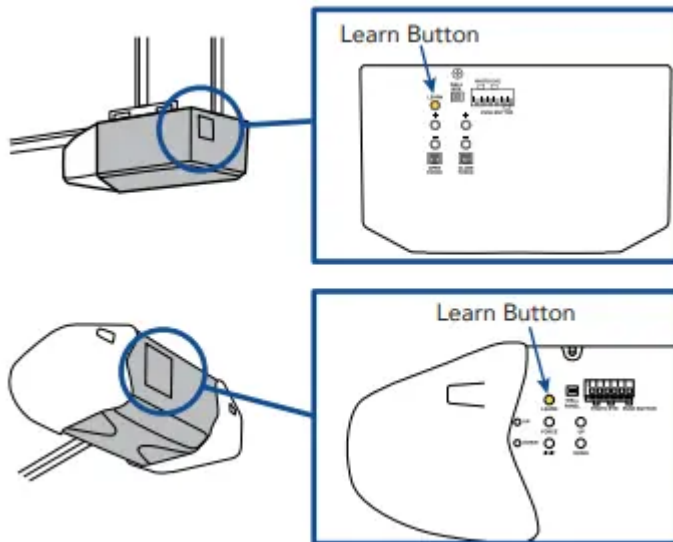
Stanley Products



Sommer Products



Guardian/Xtreme Garage



Warning

This content is compiled from multiple sources and is provided for reference purposes only. It may not be complete or fully applicable to all situations. If you are unable to resolve your issue, please contact the product manufacturer or an authorized service provider for official support.