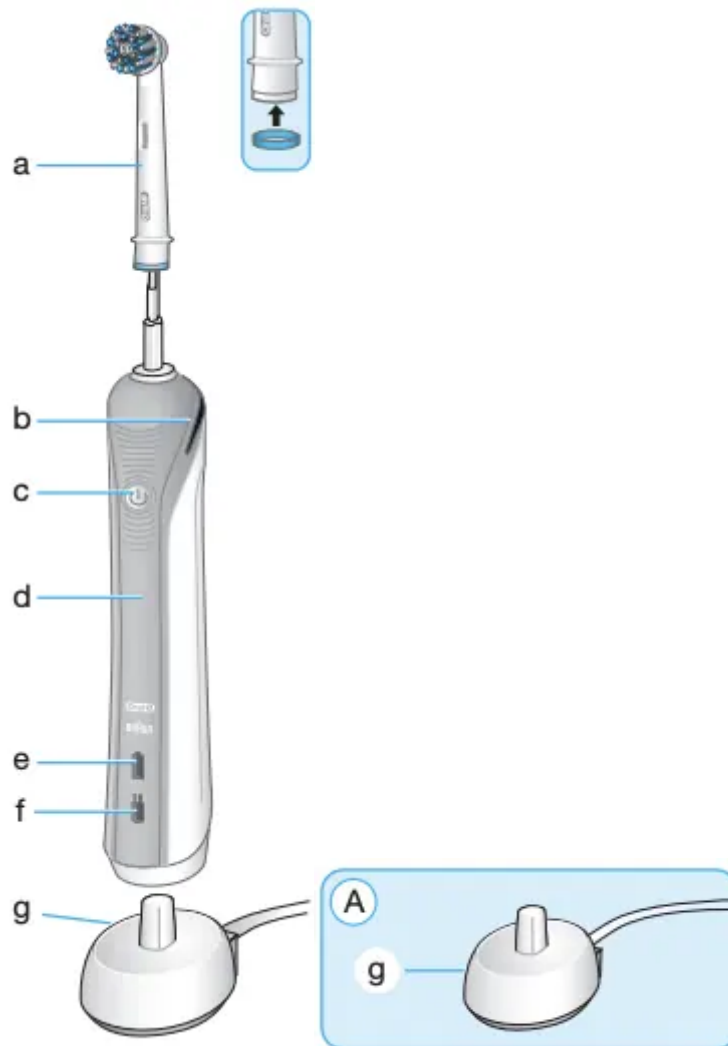


Description



a Brush head

b Pressure sensor light (depending on model)

c On/off button (mode selection)

d Handle

e Charge indicator light

f Low charge indicator light

g Basic charger

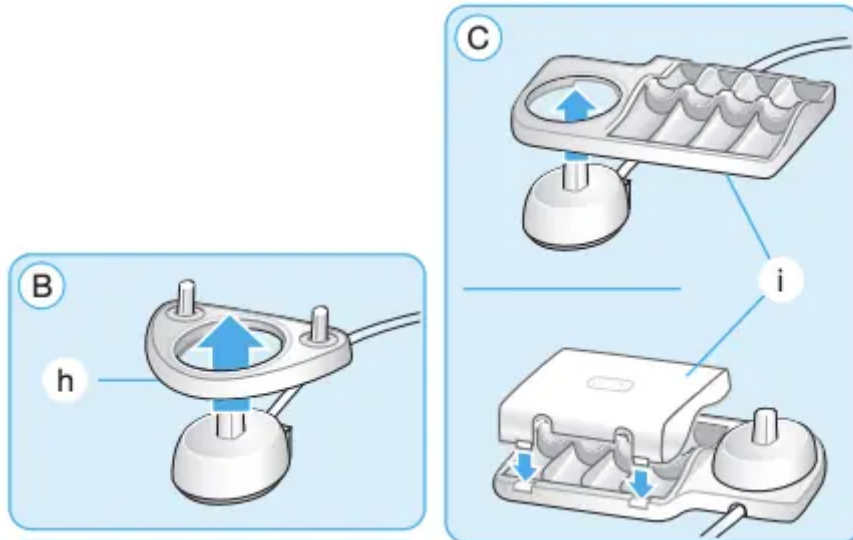
h Brush head holder (depending on model)

i Brush head compartment with protective cover (depending on model)

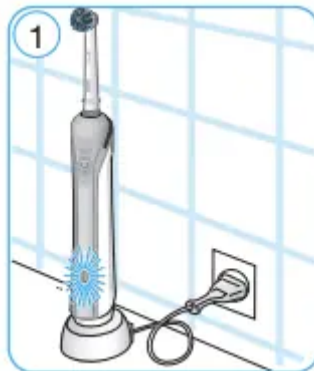
Connecting and charging

Your toothbrush has a waterproof handle, is electrically safe and designed for use in the bathroom.

- Plug the basic charger (g) or the assembled charging unit picture B/C,(page 2) into an electrical outlet and place the toothbrush handle (d) on the charging unit.



- The green charge indicator light (e) flashes while the handle is being charged. Once it is fully charged, the light turns off. A full charge can take up to 22 hours and enables up to seven days of regular brushing (twice a day, 2 minutes) (picture 1, page 2). **Note:** After deep discharge, the green light might not flash immediately; it can take up to 10–15 minutes.



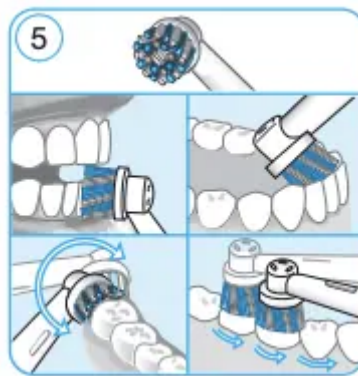
- When the rechargeable battery is low, the red low charge indicator light (f) starts flashing after turning off the toothbrush.
- For everyday use, the toothbrush handle can be stored on the charging unit to maintain it at full power. Overcharging is impossible.
- To maintain the maximum capacity of the rechargeable battery, unplug the charging unit and fully discharge the handle with regular use at least every 6 months.

Using your toothbrush

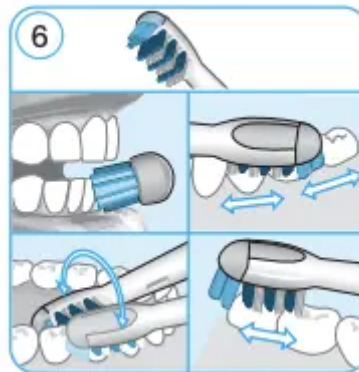
Wet brush head and apply any kind of toothpaste. To avoid splashing, guide the brush head to your teeth before switching on the appliance (picture 2, page 2).



When brushing your teeth with one of the Oral-B oscillating-rotating brush heads guide the brush head slowly from tooth to tooth, spending a few seconds on each tooth surface (picture 5, page 2).



When using the Oral-B «Deep Sweep» brush head place the toothbrush bristles against the teeth at a slight angle towards the gumline. Apply light pressure and start brushing in back and forth motions, just like you would do with a manual toothbrush (picture 6, page 2).



With any brush head start brushing the outsides, then the insides and finally the chewing surfaces. Brush all four quadrants of your mouth equally. You may also consult your dentist or dental hygienist about the right technique for you.

In the first few days of using any electric toothbrush, your gums may bleed slightly. In general, bleeding should stop after a few days. Should it persist after 2 weeks, please consult your dentist or dental hygienist. If you have sensitive teeth and gums, Oral-B recommends using the «Sensitive» mode (optional in combination with the Oral-B Sensitive Gum Care brush head).

Brushing modes (depending on model)

1-Mode	2-Mode	3-Mode	Brushing modes (for handle type 3756)
✓	✓	✓	Daily Clean – Standard for daily mouth cleaning
	✓	✓	Sensitive – Gentle, yet thorough cleaning for sensitive areas
		✓	Whitening – Exceptional polishing for occasional or everyday use

How to switch between modes:

Your toothbrush automatically starts in «Daily Clean» mode. To switch to other modes, successively press the on/off button.

If you wish to turn off your toothbrush from «Sensitive» mode e.g., push and hold down the on/off button until the motor stops.

Pressure Sensor

Helping protect your teeth and gums from hard brushing, your toothbrush has a pressure control feature installed. If too much pressure is applied, the red pressure sensor light (b) will light reminding you to reduce pressure (picture 4, page 2) (depending on model - starting with model 2000).

In addition the movement of the brush head will continue but its pulsation will stop and you will also hear a different sound while brushing. Periodically check the operation of the pressure sensor by pressing lightly on the brush head during use.



Professional Timer








A short stuttering sound at 30-second intervals reminds you to brush all four quadrants of your mouth equally (picture 3, page 2). A long stuttering sound indicates the end of the professionally recommended 2-minute brushing time. The elapsed brushing time is memorized when the handle is briefly switched off during brushing. When pausing longer than 30 seconds the timer resets.



Brush heads

Oral-B offers you a variety of different Oral-B brush heads that fit your Oral-B toothbrush handle.

Our oscillating-rotating brush heads can be used for tooth-bytooth precision cleaning.

	<p><u>Oral-B CrossAction brush head</u></p> <p>Our most advanced brush head. Angled bristles for a precise clean. Lifts and powers away plaque.</p>
	<p><u>Oral-B Precision Clean brush head</u></p> <p>provides effective and gentle cleaning action for both teeth and gums. The brush head cups each tooth with longer and denser bristles and reach deep between teeth at the same time.</p>
	<p><u>Oral-B FlossAction brush head</u></p> <p>features micropulse bristles that allow for an outstanding plaque removal in the interdental areas.</p>
	<p><u>Oral-B 3D White brush head</u></p> <p>features a special polishing cup to naturally whiten your teeth. Please note that children under 12 years old should not use the Oral-B 3D White brush head.</p>
	<p><u>Oral-B Sensitive Gum Care brush head</u></p> <p>provides thorough cleaning for sensitive teeth and gums. It has an extra soft bristle texture that is gentle on teeth and gums.</p>
	<p><u>Oral-B Ortho brush head</u></p> <p>with special tufting pattern thoroughly cleans and gently removes plaque from teeth with braces.</p>
	<p><u>Oral-B Power Tip brush head</u></p> <p>is designed for cleaning between teeth as well as around bridges, crowns and implants. Position the Power Tip at a 45 degree angle to the gumline. Slowly guide the Power Tip along the gumline, pausing between teeth for excellent results.</p>
<p>The dynamic «Deep Sweep» brush head can be used with all common brushing techniques.</p>	



Oral-B Deep Sweep brush head

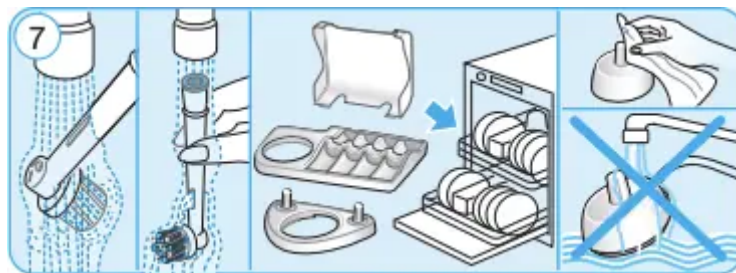
features triple zone cleaning action for outstanding plaque removal, even in between teeth.

Oral-B brush heads feature light blue INDICATOR® bristles to help you monitor brush head replacement need. With thorough brushing, twice a day for two minutes, the blue color will fade halfway down approximately in a 3-month period. If the bristles splay before the color recedes, you may exert too much pressure on teeth and gums.

We do not recommend using the Oral-B FlossAction or Oral-B 3D White brush head with braces. You may use the Oral-B Ortho brush head, specifically designed to clean around braces and wires.

Cleaning recommendations

- After brushing, rinse your brush head carefully under running water for some seconds with the handle switched on.
- Switch off the handle and remove the brush head.
- Clean both parts separately under running water then wipe them dry before reassembling the toothbrush.
- Disassemble charging unit before cleaning. Never place the charger in dishwasher or water; it should be cleaned with a damp cloth only (picture 7, page 2).



- Brush head holder (h), brush head compartment and protective cover (i) are dishwasher-safe.

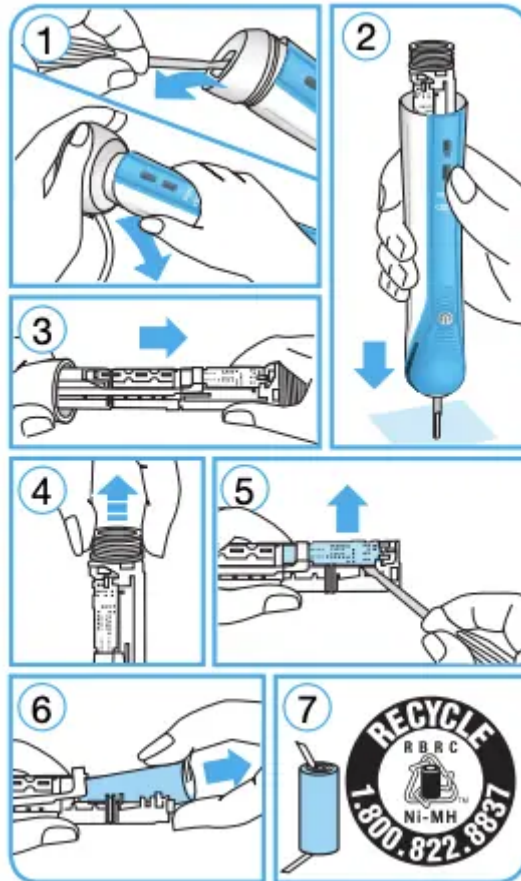
Environmental Notice

Product contains batteries and/or recyclable electric waste. For environment protection do not dispose in household waste, but for recycling take to electric waste collection points provided in your country

Removing batteries

Handle battery

At the end of the product's useful life, open the handle as shown, remove the rechargeable battery and dispose of it according to local environmental regulations.



Caution! Opening the handle will destroy the appliance and invalidate the warranty.

Subject to change without notice.

IMPORTANT SAFEGUARDS

Your Oral-B® toothbrush has been carefully designed to offer you and your family a unique brushing experience that is both safe and effective.

Read all instructions before using.

DANGER

In order to reduce the risk of electrocution:

1. Do not place or store the charger where it can fall or be pulled into a tub or sink.
2. Do not place the charger in water or other liquid.
3. Do not reach for a charger that has fallen into water. Unplug immediately.

4. Do not use while bathing.

WARNING

To reduce the risk of burns, electrocution, fire or injury:

1. Close supervision is necessary when this product is used by, on, or near children or invalids.
2. Use this product only for its intended use as described in this manual. Do not use attachments not recommended by the manufacturer.
3. Keep cord away from heated surfaces.
4. Never drop the appliance or insert any object into any opening of the appliance.
5. Never operate this product if it has a damaged cord or plug, if it is not working properly, if it has been dropped or damaged or if it has been dropped into water. If any of these occur, please contact a service center and return the product for examination and repair.

IMPORTANT

1. Periodically check the cord for damage. If cord is damaged, take the charging unit to an Oral-B Service Center. A damaged or non-functioning unit should no longer be used.
2. If the toothbrush handle is dropped, the brush head should be replaced before the next use even if no damage is visible.
3. Do not touch the power plug with wet hands. This can cause an electric shock.
4. When unplugging, always hold the power plug instead of the cord.
5. Do not modify or repair the product. This may cause fire, electric shock or injury. Consult your dealer for repairs or contact an Oral-B Service Center. Do not disassemble the product except when disposing of the battery.
6. When taking out the battery for disposal, use caution not to short the positive (+) and negative (-) terminals.
7. This product is not intended for use by children under age three.
8. This toothbrush is a personal care device and is not intended for use on multiple patients in a dental practice or institution.
9. Replace brush (head) every 3 months or sooner if brush head becomes worn.

CAUTION: If you are undergoing treatment for any oral care condition, consult your dental professional prior to use.

SAVE THESE INSTRUCTIONS

Warning

This content is compiled from multiple sources and is provided for reference purposes only. It may not be complete or fully applicable to all situations. If you are unable to resolve your issue, please contact the product manufacturer or an authorized service provider for official support.

Document generated by [ManualsFile](#)