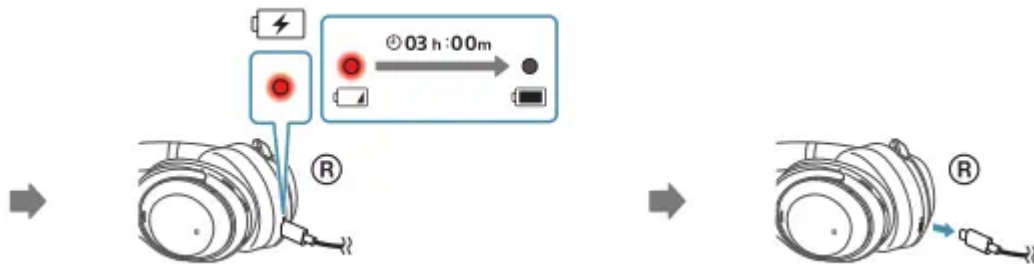
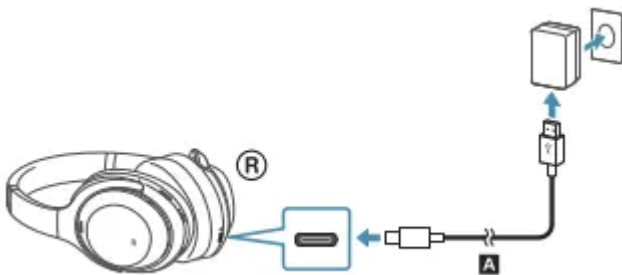
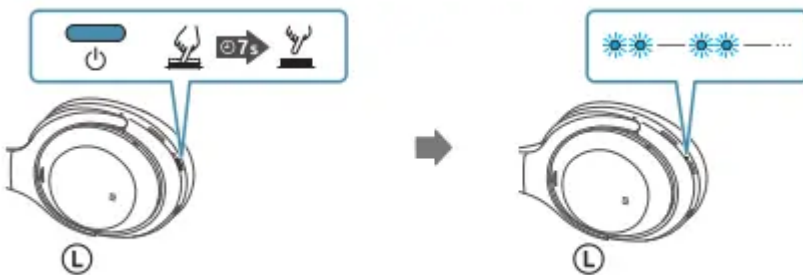
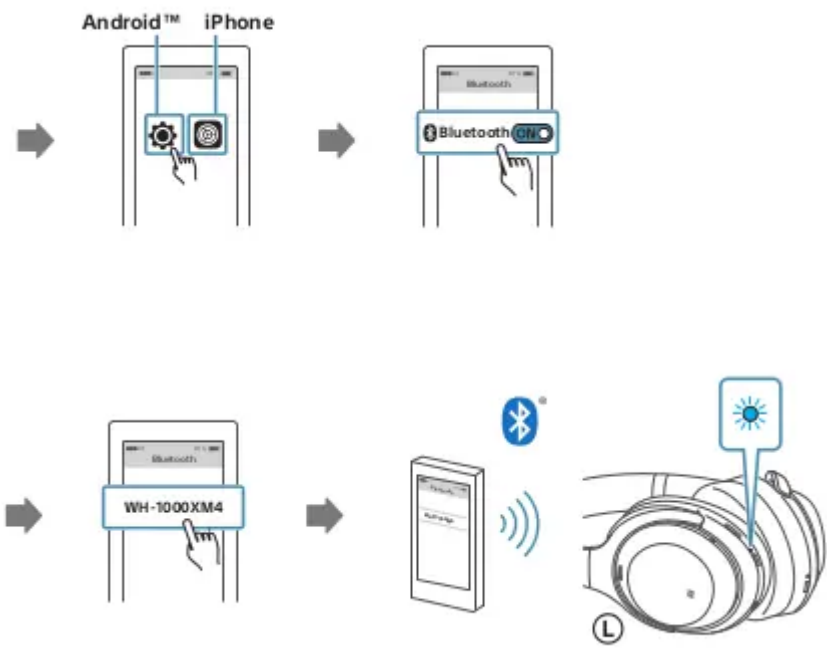


1. Batteries

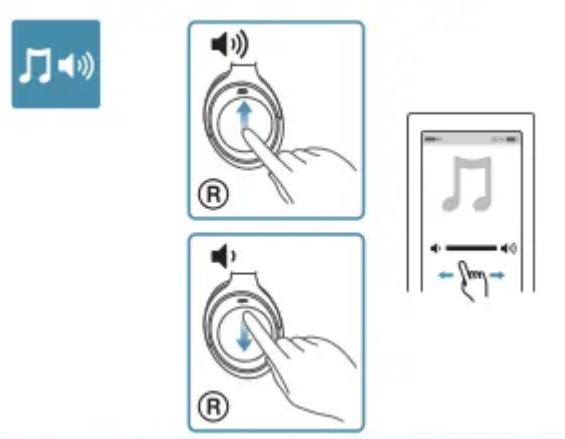
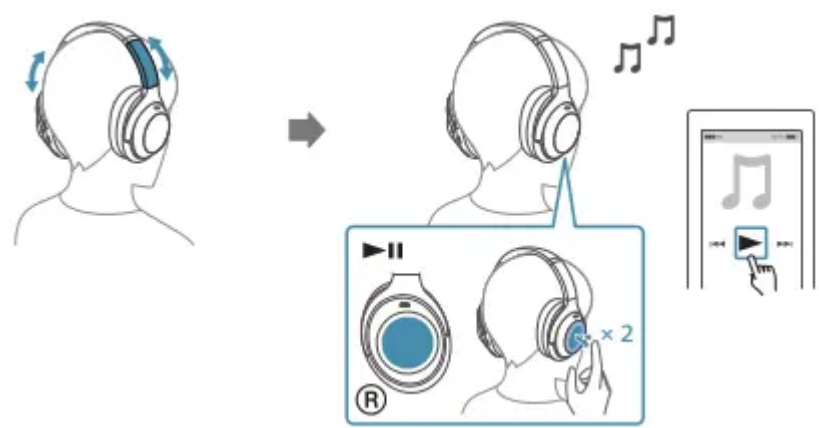


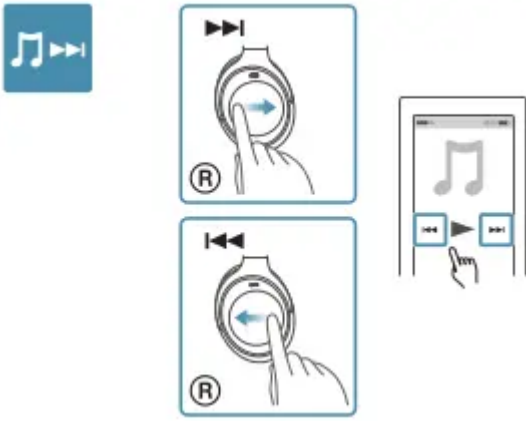
2. Connect Device, Bluetooth



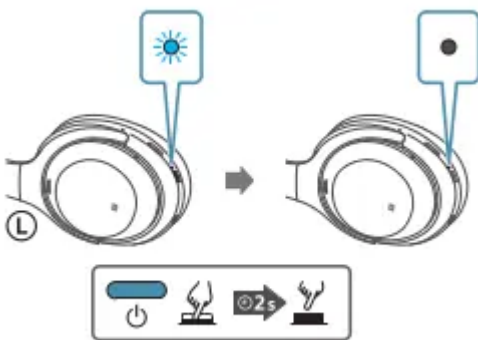


3. Use

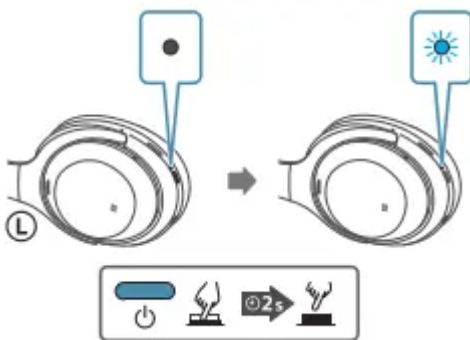




Turn Off



Turn On

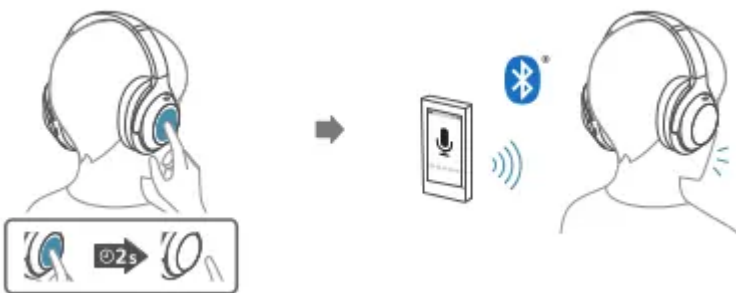




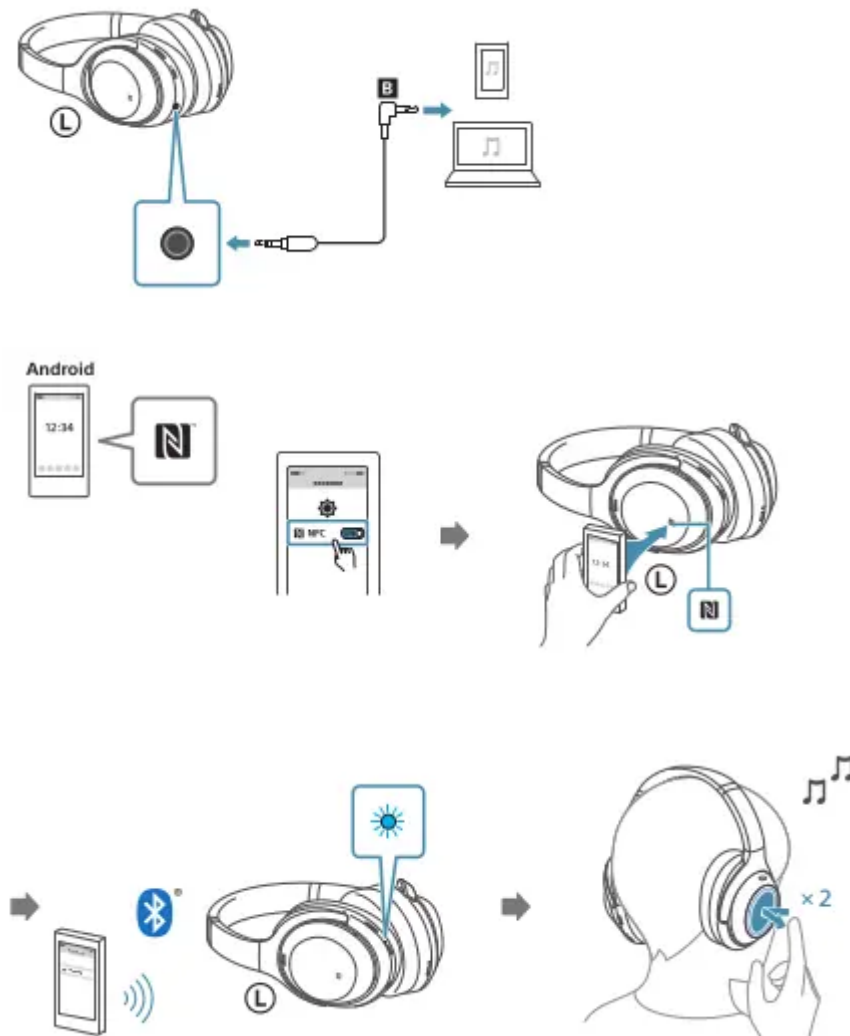
Call



Android/iPhone



Connect



Using the Google Assistant

By using the Google Assistant feature that comes with the smartphone, you can speak to the headset's microphone to operate the smartphone or perform a search.

Compatible smartphones: Smartphones installed with Android 5.0 or later (The latest version of the Google app is required.)

1. Open the "Sony | Headphones Connect" app, and set the CUSTOM button as the Google Assistant button. When using the Google Assistant for the first time, open the Google Assistant app and touch [Finish headphones setup] on the Conversation View, and follow the on-screen instructions to complete initial setup for the Google Assistant.
2. Press the CUSTOM button to use the Google Assistant. Press and hold the button: Inputs a voice command Press the button once:

- Reads out the notification

- Press the button twice quickly:
- Cancels the voice command

Operating the headset with the Google Assistant

By saying specific words on the Google Assistant while pressing the CUSTOM button, you can perform noise canceling settings or other operations of the headset.

Hint:

- Check or update the software version of the headset with the “Sony | Headphones Connect” app.
- When the Google Assistant is not available for reasons such as not being connected to the network, the voice guidance “The Google Assistant is not connected” is heard.
- If you do not see [Finish headphones setup] on the Conversation View of the Google Assistant app, delete the pairing information for the headset from the Bluetooth settings of your smartphone and redo the pairing process.

Note

- If the CUSTOM button is set as the Google Assistant button, the noise canceling function, the Ambient Sound Mode, and the NC Optimizer function cannot be operated from the headset.
- If the CUSTOM button is set as the Google Assistant button, the voice assist function (Google app) cannot be used.
- If the CUSTOM button is set as the Google Assistant button, the Amazon Alexa function cannot be operated from the headset.
- The Google Assistant may not be available in some countries, regions, or languages.
- The function to operate the headset with the Google Assistant depends on the specifications of the Google Assistant.
- The specifications of the Google Assistant are subject to change without notice.

Warning

This content is compiled from multiple sources and is provided for reference purposes only. It may not be complete or fully applicable to all situations. If you are unable to resolve your issue, please contact the product manufacturer or an authorized service provider for official support.