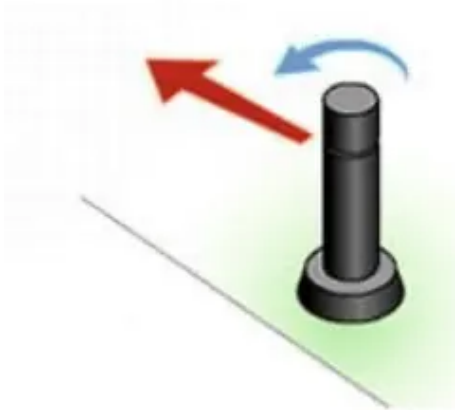


Operating Instructions for Drive Rotor

Find and set the fixed LEFT edge.

First, turn the center cap of the rotor all the way to the right until it stops. Then turn it to the left until it stops. This is your fixed left edge. Rotate the entire rotor case to align the left edge into the correct position. This is the starting point from which water rotation will begin.

NOTE: Do not force the rotor past the fixed left edge as it may strip the internal gears.



Adjust the arc pattern

The arc is preset to rotate 180° or a half circle. Using a flat-bladed screwdriver, turn the arc adjustment screw clockwise (+) to increase the arc or counterclockwise (-) to decrease the arc. The pattern is adjustable from 40° to 360°. These adjustments can be made while the water is on or off.

NOTE: when adjusting the arc while the rotor is operating, only turn the arc adjustment screw in the direction the rotor is already turning. Turning it against the direction it is already turning can damage the rotor by stripping the gears.



Adjust the spray distance

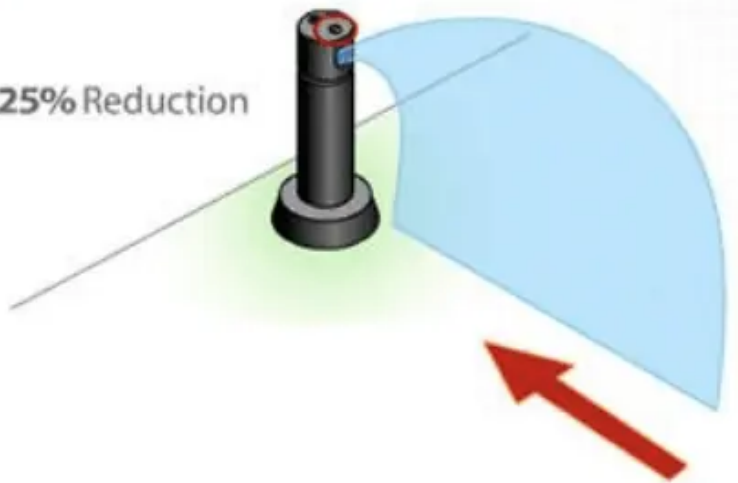
With the water on or off, you can adjust the distance of throw. Using a flat-bladed screwdriver, turn the radius reduction screw to decrease the spray distance up to 25%.

NOTE: Do not back out the reduction screw so far that it does not sit in front of nozzle while watering. This will allow water pressure to push rotor nozzle out into watering area and it can be difficult to find.

NOTE: Though the spray distance can range from 19-32 feet, the reduction screw can only reduce the distance by 25%. Any other increase or reduction in distance must be accomplished through changing rotor nozzles or changing water pressure.

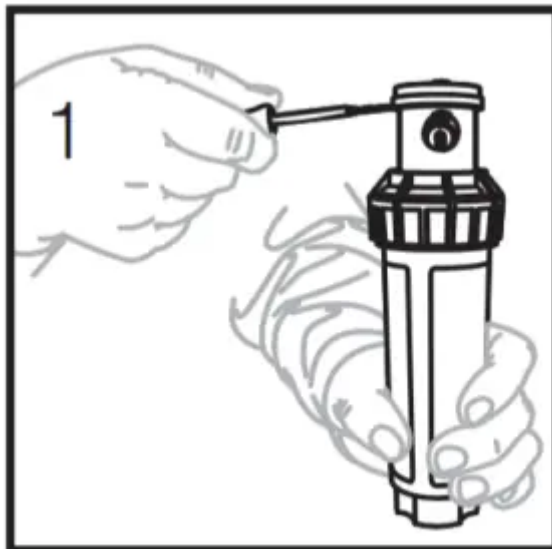


25% Reduction

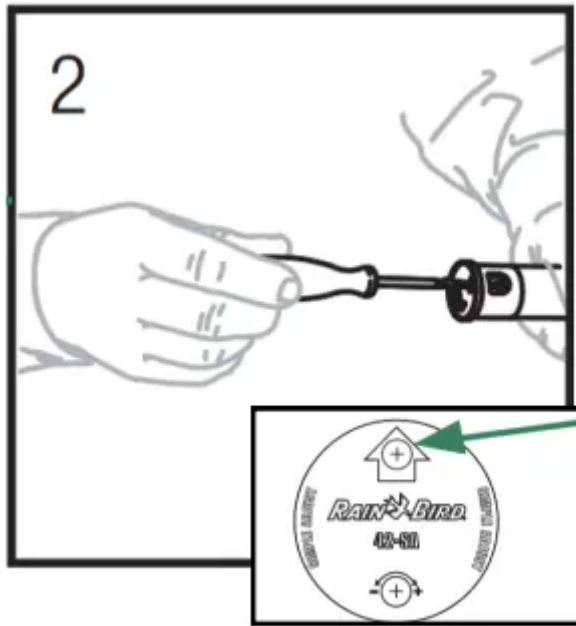


How To Change Rotor Nozzles

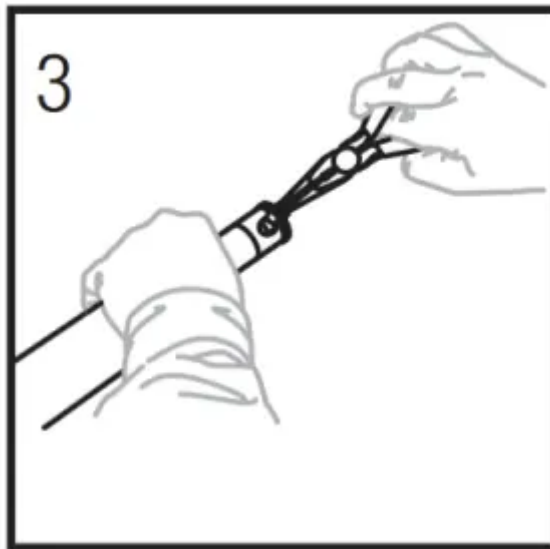
1. Lift nozzle housing with screwdriver.



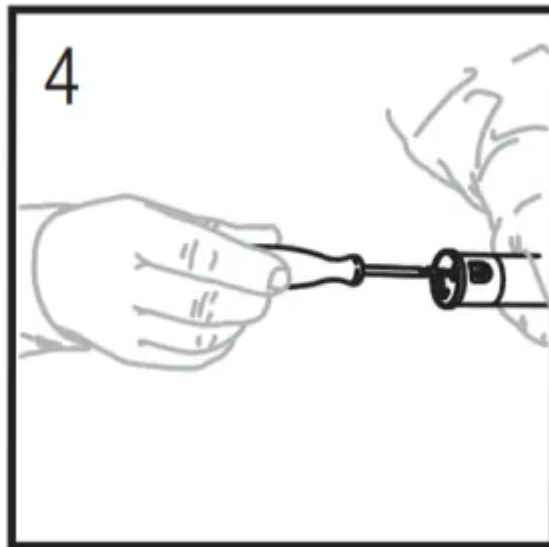
2. Turn the radius reduction screw to release the nozzle.



3. Remove the nozzle using needle nose pliers. Insert the new nozzle using needle nose pliers or your fingers



4. Reconnect the radius reduction screw and use screwdriver to tighten it back to the original position.




Enhanced Rain Curtain™ Nozzle Technology For Even Water Distribution



1. Find Your Edges - Grip the rubber cover and turn it clockwise until it hits the rimmed edge. THEN counterclockwise until it hits the fixed left edge.

2. Align Your Fixed Left Edge - Rotate the ENTIRE rotor until it points to the left border of your watering area.

3. Adjust Your Right Edge - Push a small, flat screwdriver THROUGH the rubber cover  and turn the screw clockwise to move the right edge farther to the right, counterclockwise to move it to the left.

4. Reduce Your Spray Distance - Turn the  screw to reduce the throw as much as 25%.

Adjustable 40° - 360° Pattern, 26' - 38' Spray Distance

- Water-lubricated, durable gear-driven rotor designed for reliable operation and long life



- Water-saving Rain Curtain nozzle technology produces large wind-resistant droplets and more uniformity
- Easy top arc adjustment; requires only a flat-bladed screwdriver
- Adjustable 40° to 360° part-circle and reversing full-circle rotation in one; 26'-38' spray distance
- True 4" pop-up height clears taller grass
- Protected closed-case design; ideal for “creeping” grasses, sandy soil, and other harsh surroundings
- Dependable, residential-grade 40- to 360-degree adjustable rotor for medium to large sprinkler zones

Features

With its intuitive adjustments and impressive coverage uniformity, the Rain Bird 42SA+ gear drive rotor waters all areas of your lawn evenly; reducing water use and providing greener, healthier grass. The many safeguards and trouble-free features built into our closed-case rotor sprinkler make it the perfect choice for any home landscape. Easily adjusts at the top with a flat blade screwdriver from 40° to 360° part-circle arc rotation, and reversing full-circle rotation to ensure you're watering only things that grow, not the house, sidewalk, or driveway. For installation convenience arc rotation is factory preset at 180°.

Rain Bird's patented industry-leading Rain Curtain nozzle technology delivers a uniform, rotating curtain of large water droplets that fall exactly where you want and resist windblown overspray. The nozzle's "micro ramps" also direct a portion of the spray close to the head eliminating dry brown spots common with other rotor brands. The nozzle's superior coverage uniformity helps reduce watering time saving money on water bills. The protected closed-case design makes the 42SA+ ideal for “creeping” grasses, sandy soil, and other harsh surroundings.

Water-lubricated, gear-driven design provides long-lasting dependability; true 4" pop-up height clears taller grass. Dual-action, positive-stop wiper seal protects internal mechanisms from debris while assuring positive pop-up and retraction. Heavy-duty rubber encased cap helps protect against damage from edger strikes. O-rings and seals for extra protection in “gritty” water; and a self-adjusting stator that doesn't require replacement when changing nozzles.

Rotor comes with a preinstalled 3.0 gallons per minute nozzle designed for a throw distance of 26' to 38' at common residential water pressure of 45-55 PSI. Nozzle is easily removable and additional nozzles are available to customize watering based on your specific flow rate and system requirements. 3/4" NPT female bottom threaded inlet.

Specs

- 3/4" NPT female bottom threaded inlet.

- Spray distance: 26-38 feet
- True 4" (10cm) pop-up (measured from center of the nozzle).

Warning

This content is compiled from multiple sources and is provided for reference purposes only. It may not be complete or fully applicable to all situations. If you are unable to resolve your issue, please contact the product manufacturer or an authorized service provider for official support.

Document generated by [ManualsFile](#)

