

- a. Oral-B Precision Clean® brush head
- b. On/off button
- c. Handle
- d. Charge indicator light
- e. Low charge indicator light

- f. Basic charger
- g. Brush head holder (depending on model)

## **IMPORTANT SAFEGUARDS**

Oral-B® Professional Care has been carefully designed to offer you and your family a unique brushing experience that is both safe and effective. Read all instructions before using.

### **DANGER**

In order to reduce the risk of electrocution:

1. Do not place or store the charger where it can fall or be pulled into a tub or sink.
2. Do not place the charger in water or other liquid.
3. Do not reach for a charger that has fallen into water. Unplug immediately.
4. Do not use while bathing.

### **WARNING**

To reduce the risk of burns, electrocution, fire or injury:

1. Close supervision is necessary when this product is used by, on, or near children or invalids.
2. Use this product only for its intended use as described in this manual. Do not use attachments not recommended by the manufacturer.
3. Keep cord away from heated surfaces.
4. Never drop the appliance or insert any object into any opening of the appliance.
5. Never operate this product if it has a damaged cord or plug, if it is not working properly, if it has been dropped or damaged or if it has been dropped into water. If any of these occur, please contact a service center and return the product for examination and repair.

### **IMPORTANT**

1. Periodically check the cord for damage. If cord is damaged, take the charging unit to an Oral-B Service Center. A damaged or non-functioning unit should no longer be used.
2. If the toothbrush handle is dropped, the brush head should be replaced before the next use even if no damage is visible
3. Do not touch the power plug with wet hands. This can cause an electric shock.
4. When unplugging, always hold the power plug instead of the cord.

5. Do not modify or repair the product. This may cause fire, electric shock or injury. Consult your dealer for repairs or contact an Oral-B Service center. Do not disassemble the product except when disposing of the battery.

6. When taking out the battery for disposal, use caution not short the positive (+) and negative (-) terminals.

7. This product is not intended for use by children under age three.

### **CAUTION**

If you are undergoing treatment for any oral care condition, consult your dental professional prior to use

## **Connecting and charging**

Your toothbrush has a waterproof handle, is electrically safe and designed for use in the bathroom.

- Plug the basic charger (f) or the assembled charging unit (see picture B, page 2) into an electrical outlet and place the toothbrush handle (c) on the charging unit.
- The green charge indicator light (d) flashes while the handle is being charged. Once it is fully charged, the green charge indicator light shines continuously for 5 seconds; then it turns off. A full charge takes at least 17 hours and enables approximately one week of regular brushing (twice a day, 2 minutes).
- When the rechargeable battery is low, the red low charge indicator light (e) starts flashing after turning off the toothbrush.
- For everyday use, the toothbrush handle can be stored on the charging unit to maintain it at full power. Overcharging is impossible. However for environmental reasons, Oral-B recommends to unplug the charging unit until the next recharge is required.
- To maintain the maximum capacity of the rechargeable battery, unplug the charging unit and fully discharge the handle with regular use at least every 6 months.

Please note: If the charge indicator light is not flashing immediately, continue charging. It will appear in 10–15 minutes.

### **Specifications**

For voltage specifications please refer to the bottom of the charging unit.

## **Using your toothbrush**

Wet brush head and apply toothpaste; you can use any kind of toothpaste. To avoid splashing, guide the brush head to your teeth before switching on the appliance. Guide the brush head slowly from tooth to tooth, spending a few seconds on each tooth surface. Brush the gums as well as the

teeth, first the outsides, then the insides, finally the chewing surfaces (see picture 5, page 2). Do not press too hard or scrub.

Brushing modes (depending on model)

«Daily Clean»

– Exceptional mouth cleaning.

«Sensitive»

– Gentle, yet thorough cleaning for sensitive areas.

«Whitening»

– Exceptional whitening for occasional or everyday use.

How to switch between modes:

- When pressing the on/off button (c) your toothbrush automatically starts in the «Daily Clean» mode.
- To switch to the «Sensitive» and «Whitening» mode, successively press the on/off button.
- To turn off your toothbrush from the «Whitening» mode, push the on/off button once more.
- If you wish to turn off your toothbrush from the «Daily Clean» or «Sensitive» mode, push and hold down the on/off button until the motor stops.

### **Pressure Sensor**

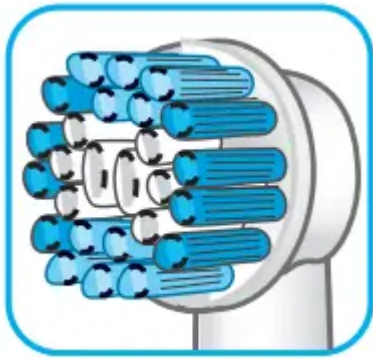
To promote optimal brushing your toothbrush has a pressure control feature installed. If too much pressure is applied, the oscillating movement of the brush head will continue but the pulsation will stop. In addition you will also hear a different sound while brushing.

### **Professional**

Timer A short stuttering sound at 30-second intervals reminds you to brush all four quadrants of your mouth equally (see picture 4, page 2). A long stuttering sound indicates the end of the professionally recommended 2-minute brushing time. The elapsed brushing time is memorised when the handle is briefly switched off during brushing. When pausing longer than 30 seconds the timer resets.

## **Individual brush heads and accessories**

Oral-B Professional Care offers you a variety of brush heads and accessories which are available in stores that sell Oral-B products.



**Oral-B Precision Clean brush head:** The Oral-B Precision Clean brush head provides effective and gentle cleaning action for both teeth and gums. The brush head cups each tooth with longer and denser bristles and reach deep between teeth at the same time.



**Oral-B Sensitive brush head:** The Oral-B Sensitive brush head provides thorough cleaning for sensitive teeth and gums. It has an extra soft bristle texture that is gentle on teeth and gums.

All brush heads feature light blue INDICATOR® bristles to help you monitor brush head replacement need. With thorough brushing, twice a day for two minutes, the blue color will fade halfway approximately within 3 months, signalling it is time to change the brush head

In the first few days of using any electric toothbrush, your gums may bleed slightly. In general bleeding should stop after a few days. Should it persist after 2 weeks, please consult your dentist or dental hygienist.

## Cleaning recommendations

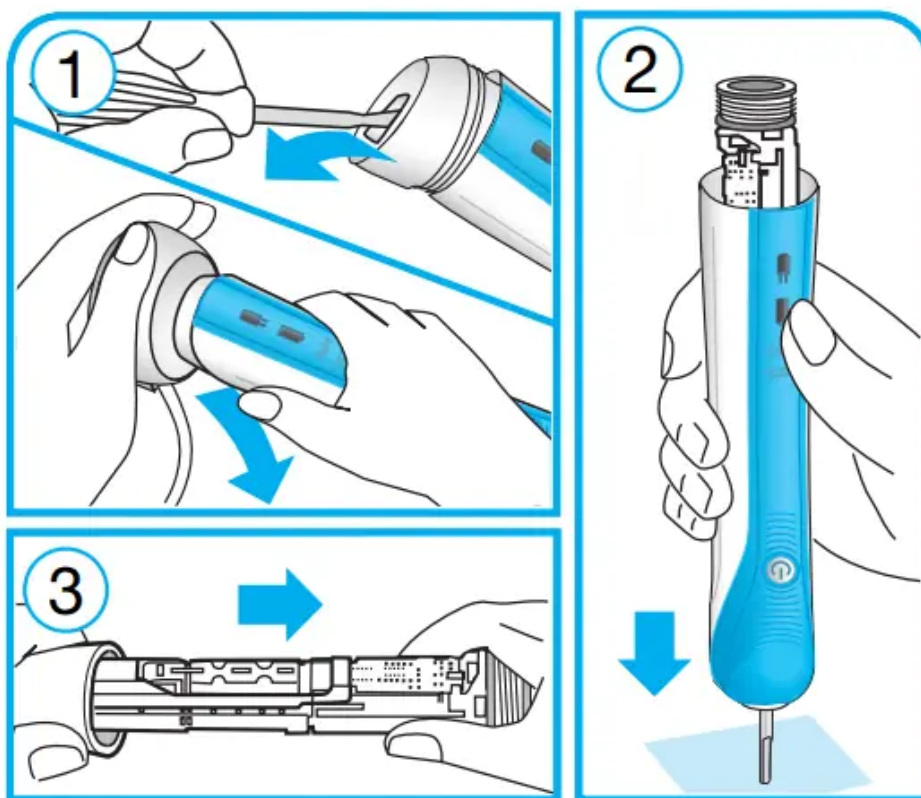
After brushing, rinse your brush head carefully under running water for some seconds with the handle switched on. Switch off the handle and remove the brush head. Clean both parts separately under running water; then wipe them dry before reassembling the toothbrush. Disassemble the charging unit before cleaning. The brush head holder is dishwasher-safe. Never place the charger in dishwasher or water. It should be cleaned with a damp cloth only

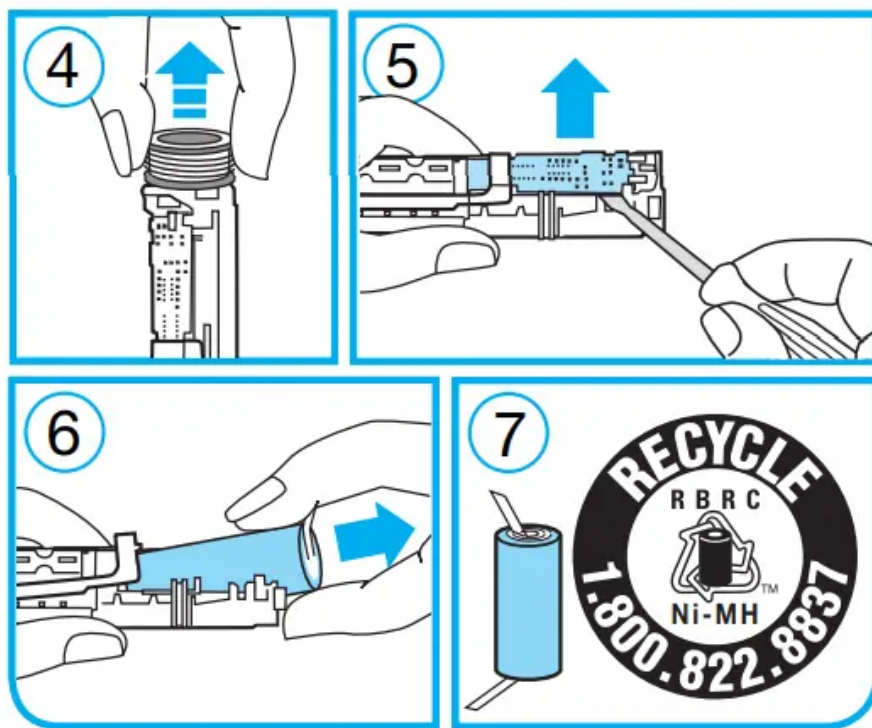
### Environmental Notice

This product contains rechargeable batteries. In the interest of protecting the environment, please do not dispose of the product in the household waste at the end of its useful life. Disposal can take place at an Oral-B Service Center or at appropriate collection points provided in your country.

### Battery removal at the end of the product's useful life

Open the handle as shown, remove the battery and dispose of it according to local environmental regulations.





Caution! Opening the handle will destroy the appliance and invalidate the warranty

Subject to change without notice.

**Satisfaction Guaranteed!**

Take the challenge! Experience the Oral-B difference! We guarantee that you, your dentist, and your dental hygienist will notice a difference.

Try Oral-B Professional Care for 60 days, starting from the day of purchase. If you are not 100% satisfied, receive a full refund. Guaranteed. For a full refund, please return your handle, refills and charging unit with your original cash register receipt to the address below postmarked within 60 days of purchase.

**U.S. only:**

Attention: 60-Day Challenge

Oral-B Braun Division

The Procter & Gamble Company

Sobin Park and A Street, MS 1F

South Boston, MA 02127

**Canada only:**

Attention: 60-Day Challenge

Braun Canada a division of Procter & Gamble Inc.

Toronto, ON



**Warning**

This content is compiled from multiple sources and is provided for reference purposes only. It may not be complete or fully applicable to all situations. If you are unable to resolve your issue, please contact the product manufacturer or an authorized service provider for official support.

