

User Guide Hoover BH50030 Hand Vacuum

FEATURES



1. Combination Crevice/Brush Tool

2. Fuel Gauge

3. On/Off Switch (0=OFF, I=ON)

4. Battery 5. Dirt Cup DIRT CUP

5. Dirt Cup

6. Pre-Screen

7. Filter (inside pre-screen)

7 ACCESSORIES*

8. Pet Upholstery Tool (part #410048001)

9. LiNXTM Power Head (part #410051001)

10. Deluxe Dusting Brush (part #410049001)

11. Mesh Storage Bag

If you need assistance:

- Visit our website at hoover.com. Follow the authorized dealer locator link to find the Hoover® authorized dealer nearest you or call 1-800-944-9200 for an automated referral of Hoover® authorized dealer locations (U.S. only) or to speak with a customer service representative;
- Mon- Fri 8am- 7pm EST. PLEASE DO NOT RETURN THIS PRODUCT TO THE STORE.

HOW TO OPERATE

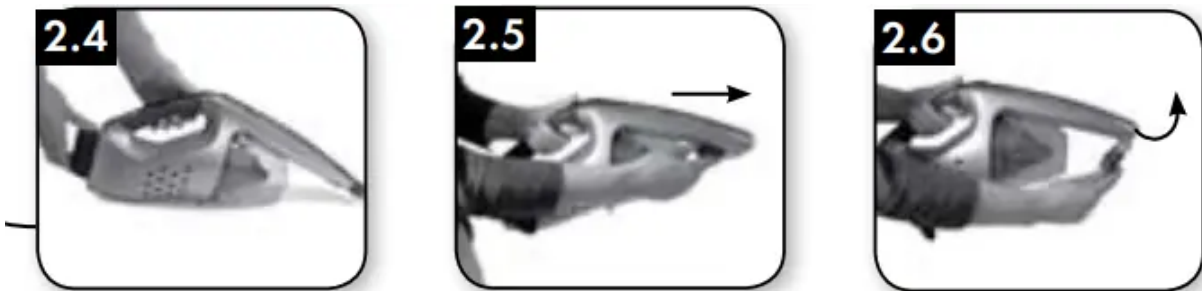


- Charge battery fully before first use. Fully discharged battery will take up to 3 hours to charge.

NOTE: See battery and charger manual for battery charging instructions

- Use only manufacturer's supplied or recommended battery and charger. Insert Battery
Insert charged battery into battery cavity until latch is locked into place.

NOTE: When inserting and removing battery, ensure the switch is in the off position marked "O".
ON/OFF Switch To turn vacuum on, roll switch forward to position marked "I".



- To remove and charge battery, pull on release lever located on end of battery and pull out gently. Attachments* *Available on BH50030 Hand Vac with Pet Tools.

CREVICE TOOL

- Push Crevice Tool forward to release. Pivot Crevice Tool up and lock into place.

BRUSH TOOL

- Pull brushes forward on Crevice Tool to reveal Brush Tool. Reverse steps 1-3 to store Crevice or Brush Tool.

LiNX™

- Power Head Align pins on LiNX™ Power Head with small openings on nozzle and insert until securely in place. To utilize LiNX™ Power Head pivot feature, move handle in a vertical motion while cleaning. Pull out to remove

ADDITIONAL PET TOOLS

- Slide tool with Hoover® logo facing up into nozzle until locked securely in place. To remove, pull tool directly out.

MAINTENANCE

Removal

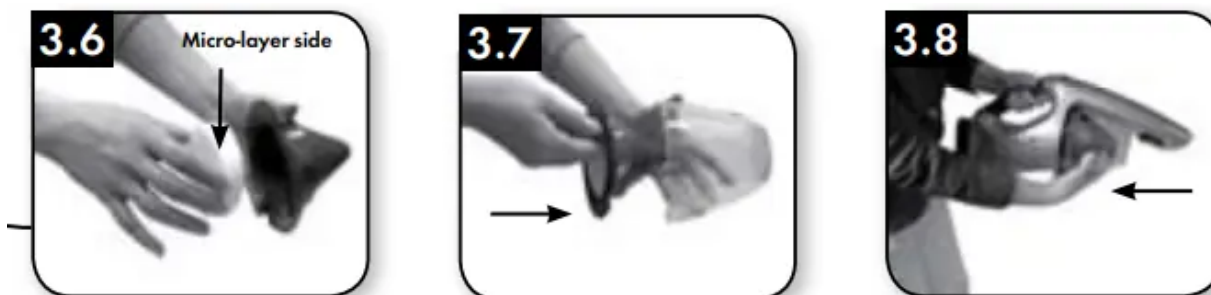


- Grip dirt cup and twist off in direction indicated on hand vac until unlock symbol is aligned with mark.
- Pull pre-screen from dirt cup. Empty dirt cup over trash can to remove debris. 3.1 3.2 3.3 To remove debris from pre-screen, gently tap over trash. Pull out filter and brush or wash clean with cold water.

WARNING:

- Always dry for 24 hours before replacing. **WARNING:** Do not use detergent or hot water to clean.

Replacement



- Replace filter in pre-screen with micro-layer side facing out. Replace filter and pre-screen in dirt cup.
- Replace dirt cup by twisting on in direction indicated on hand vac until lock symbol is aligned with mark.

Cleaning LiNX™ Power Head*



- Remove LiNX™ Power Head Tool from nozzle and turn over. Press eject button on side of tool to release brushroll and remove.
- Remove red end cap and clean away hair and debris.

IMPORTANT:

- Do not discard red end cap. Ensure red end cap is replaced. Place opposite end onto hexagonal drive gear and pivot into place until brushroll snaps secure.

BATTERY FUEL GAUGE, DISPOSAL & SERVICE

- The battery used in this device may present a risk of fire or chemical burn if mistreated. Do not disassemble, heat above manufacturer's maximum temperature limit (60°C/ 140°F), or incinerate. Replace battery with HOOVER® battery Part # BH50000 only.
- Use of another battery may present a risk of fire or explosion. Dispose of used battery promptly. Keep away from children. Do not disassemble and do not dispose of in fire. Do not attempt to disassemble the battery or remove any component projecting from the battery terminals. The battery and charger have no user serviceable parts
- Fire or injury may result. Prior to disposal, protect exposed terminals with heavy insulating tape to prevent shorting. Lithium-ion Batteries The battery must be collected, recycled or disposed of in an environmentally sound manner.
- The EPA certified RBRC Battery Recycling Seal on the lithium-ion (Li-ion) battery indicates Techtronic Industries, a corporate affiliate of Hoover®, Inc., is voluntarily participating in an industry program to collect and recycle these batteries at the end of their useful life, when taken out of service in the United States or Canada.
- The RBRC program provides a convenient alternative to placing used Li-ion batteries into the trash or the municipal waste stream, which may be illegal in your area.
- Please visit www.rbrc.org/call2recycle/ for information on Li-ion battery recycling and disposal bans/restrictions in your area. Hoover, Inc., involvement in this program is part of our commitment to preserving our environment and conserving our natural resources.

TROUBLESHOOTING & SERVICE

Product does not turn on

1. Battery is not in product.
2. Insert battery into product.
3. Battery is not inserted properly.
4. Make sure battery is fully seated in battery cavity
 - Battery is not charged.
 - Remove and charge battery or replace with second charged battery.
 - Battery is too hot.
 - Remove battery and let cool for 30 minutes, replace battery and retry or replace with second charged battery. Internal component damage.
 - Call for service: 1-800-944-9200

Product turns off

- Battery is fully discharged.
- Remove and charge battery or replace with second charged battery.
 - Battery is too hot.
 - Remove battery and let cool for 30 minutes, replace battery and retry or replace with second charged battery.

Product does not pick up

- Internal component damage.
- Dirt cup may be full.
- Empty dirt cup.
- Filter may be dirty.
- Clean and/or wash filter.
- Pre-screen may be dirty.
- Remove, clean and replace.

Brushroll will not turn

1. Brushroll Obstruction.
2. Motor Protection Device Tripped.
 1. Remove battery and ensure product is turned off. Eject brushroll and clear obstruction.
 2. Turn product to off position, product will reset in approximately 30 seconds

Warning

This content is compiled from multiple sources and is provided for reference purposes only. It may not be complete or fully applicable to all situations. If you are unable to resolve your issue, please contact the product manufacturer or an authorized service provider for official support.

Document generated by [ManualsFile](#)

