

USER MANUAL CARPET & UPHOLSTERY SPOT CLEANER

GETTING STARTED

1. Remove Solution Tank from the side of the unit, then remove the cap.



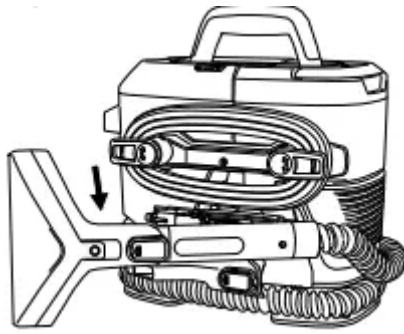
2. Follow the formula ratio chart to add cleaning formula in the Solution Tank.



3. Replace and tighten cap. Slide the tank back into the unit. The tank is secured when you feel a click.



4. Unwrap hose from unit. Select preferred tool and make sure it is attached securely.



NOTE: Read the directions on the HOOVER® Carpet Cleaning fluid prior to use.

Before You Begin Cleaning

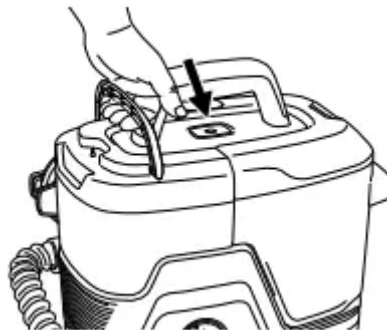
Use your Hoover upholstery and spot cleaner only if upholstery fabric is marked with a “W” (for “wet” clean) or “S/W” (for “solvent/dry” or “wet” clean). Don’t clean fabric marked “S” (“solvent/ dry” clean only).

Test for colorfastness in a small, hidden area.

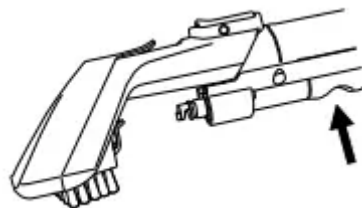
Gently rub surface with a dampened white cloth. Wait ten minutes and check for color removal or bleed with a white paper towel.

OPERATION

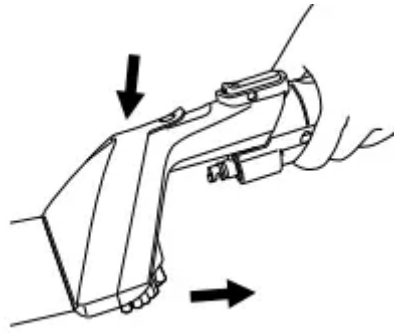
1. Press Red Power button on top of unit to turn ON.



2. Hold tool about 5 inches over the spot or stain. Spray a generous amount of cleaning solution over the soiled area by pressing the trigger behind the tool and scrub the stain in a back and forth motion.



3. To lift the stain, suction up the dirt and cleaning solution by applying downward pressure on the front of the cleaning tool and pulling towards you. Repeat as needed.



For best results, pretreat stains with a HOOVER® spot treatment (see HOOVER® Cleaning Solution Guide) to help loosen and remove even the most stubborn stains. Distribute a generous amount of pretreat spray on spot, stain, or high traffic area. Always follow specific directions found on solution label.

Wait 5-10 minutes before using machine.

STORAGE: Wrap cord around the cord hooks for convenient storage. Attach the plug end to the cord.

For fast cord release, simply turn the cord wraps 180 degrees to the right or left.

LUBRICATION: The motor is equipped with bearings which contain sufficient lubrication for their lifetime. The addition of lubricant could cause damage.

Do not add lubricant to motor bearings.

Tools and formula may vary by model.

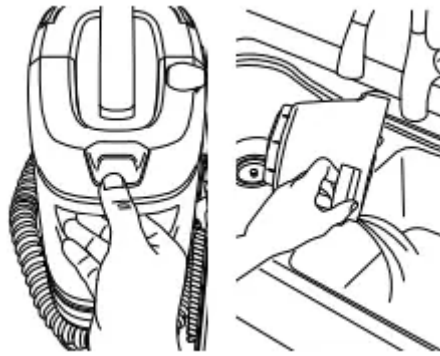
MAINTENANCE

This product contains no serviceable parts.

If appliance is not working as it should, has been dropped, damaged, left outdoors, or dropped into water, call customer service at 1.800.944.9200 prior to continuing use.

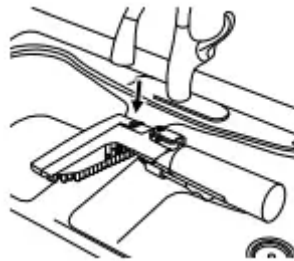
HOW TO CLEAN THE RECOVERY TANK

1. Press TANK RELEASE button then lift lid off for emptying and rinsing. Clean water will help remove dirt & debris from the tank. Let air dry before reinstalling.



HOW TO CLEAN TOOLS

1. Remove the tool from the hose. Rinse hand tool under faucet. Remove the nozzle cover by unlatching the clear tab.



2. Remove Insert and rinse under faucet.



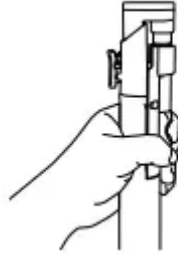
HOW TO CLEAN HOSE

1. Remove the solution tank and fill with warm water (max 140°F (60°C)) to the small area fill line.
2. Remove any cleaning tool or attachment from the hose, and attach the Hose Rinse Tool to the hose.



3. Ensure both the solution and recovery tanks are secured on unit. Turn unit on and hold the trigger for 30 seconds. The clean water will rush through the hose, effectively cleaning

and removing odor causing bacteria left in the hose. Repeat as needed. Let unit run for 5-10 seconds before turning off.



4. Repeat process as needed and turn off the unit when hose is fully clean. Empty the recovery tank.

THERMAL PROTECTION

A thermal protector has been designed into your cleaner to protect it from overheating. When the thermal protector activates the cleaner will stop running.

If this happens proceed as follows:

1. Turn cleaner OFF and unplug it from the electrical outlet.
2. Empty Recovery Tank.
3. Inspect for any obstructions. Clear obstructions if present.
4. When cleaner is unplugged and motor cools for 30 minutes, the thermal protector will deactivate and cleaning may continue.

If the thermal protector continues to activate after following the above steps, your cleaner needs servicing.

FORMULA RATIO CHART	SMALL AREA (20 OZ)	LARGE AREA (40 OZ)
IF USING HOOVER CONCENTRATE PRO TIPS - FOR BEST EXPERIENCE: Add water before concentrated formula.		
Water	Fill water Small Area Line (20 oz)	Fill water Large Area Line (39 oz)
HOOVER 2X Concentrated Formula	0.5 oz	1 oz
Clean Complements Enhancer	Up to 1 oz	Up to 1 oz
IF USING HOOVER READY-TO-USE PREMIX		
Premixed Formula	Fill premix Small Area Line	Fill premix Large Area Line
Clean Complements Enhancer	Up to 1 oz	Up to 1 oz



TROUBLESHOOTING



PROBLEM	POSSIBLE CAUSE	POSSIBLE SOLUTION
Cleaner won't run	<ol style="list-style-type: none"> 1. Power cord not firmly plugged into outlet. 2. Blown fuse or tripped breaker 3. Needs service 	<ol style="list-style-type: none"> 1. Plug unit in firmly 2. Check fuse or breaker in home. Replace fuse/reset breaker in home 3. Visit our website at www.hoover.com or call 1-800-944-9200
Cleaner won't pick-up or low suction	<ol style="list-style-type: none"> 1. Recovery Tank is not installed correctly 2. Recovery Tank is full. 3. Recovery Tank is clogged. 4. Air path is clogged. 5. Recovery Tank debris filter is clogged 	<ol style="list-style-type: none"> 1. Check placement of Recovery Tank in base of cleaner. 2. Empty Recovery Tank. 3. Clean Recovery Tank. 4. Remove Hose and Flush out with Clean Water. 5. Remove debris filter and rinse thoroughly, then replace
Water escaping from Cleaner	<ol style="list-style-type: none"> 1. Recovery Tank is full. 2. Recovery Tank is not installed correctly. 3. Solution Tank not installed properly. 	<ol style="list-style-type: none"> 1. Empty Recovery Tank. 2. Check placement of Recovery Tank in base of cleaner. 3. Review "Getting Started" for Solution Tank Installation.
Cleaner won't dispense	<ol style="list-style-type: none"> 1. Solution Tank is empty. 	<ol style="list-style-type: none"> 1. Fill Solution Tank. 2. Review "Getting Started" Solution Tank Installation.



	<ul style="list-style-type: none"> 2. Solution Tank not installed properly. 3. Needs service. 	<ul style="list-style-type: none"> 3. Visit our website at www.hoover.com or call 1-800-944-9200.
Hose nozzle will not spray after filling the Clean Water Tank or Solution Tank Container.	<ul style="list-style-type: none"> 1. Air is trapped in the pump and hose. 	<ul style="list-style-type: none"> 1. Turn on the cleaner. If hose does not spray, prime the pump by lowering the hose down to the floor and hold the trigger for up to 1 minute.
Motor noise becomes high-pitched	<ul style="list-style-type: none"> 1. Recovery Tank is full. 2. Recovery Tank is clogged. 3. Air path is clogged. 4. The float in the Recovery Tank has been activated. 	<ul style="list-style-type: none"> 1. Empty Recovery Tank. 2. Clean the Recovery Tank. 3. Unclog air path. 4. Review Cleaning the Recovery Tank.

GROUNDING INSTRUCTIONS

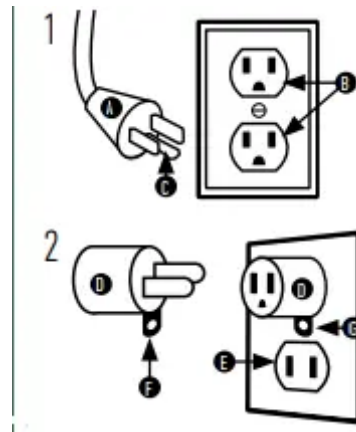
This appliance must be grounded. If it should malfunction or breakdown, grounding provides a path of least resistance for electric current to reduce the risk of electric shock. This appliance is equipped with a cord having an equipment-grounding conductor (C) and grounding plug (A). The plug must be inserted into an appropriate outlet (B) that is properly installed and grounded in accordance with all local codes and ordinances.

WARNING:

Improper connection of the equipment-grounding conductor can result in the risk of electric shock. Check with a qualified electrician or service person if you are in doubt as to whether the outlet is properly grounded. Do not modify the plug provided with the appliance - if it will not fit the outlet, have a proper outlet installed by a qualified electrician.



This appliance is for use on a nominal 120-volt circuit and has a grounding plug that looks like the plug A) illustrated in Fig. 1. A temporary adapter (D) may be used to connect this plug to a 2-pole receptacle E) if a properly grounded outlet is not available (Fig. 2). The temporary adapter should be used only until a properly grounded outlet (B) can be installed by a qualified electrician (Fig. 1). The green colored rigid ear, lug, or the like (F) extending from the adapter must be connected to a permanent ground (G) such as a properly grounded outlet box cover (Fig. 2). Whenever the adapter is used, it must be held in place by a met-a screw



Warning

This content is compiled from multiple sources and is provided for reference purposes only. It may not be complete or fully applicable to all situations. If you are unable to resolve your issue, please contact the product manufacturer or an authorized service provider for official support.