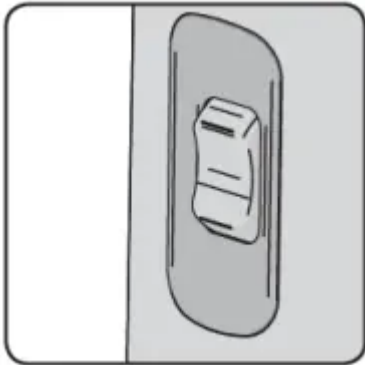


## Power Switch

Press and hold the switch for the product operations.



[ON]: ON - Starts the motor and makes juice.



[●]: Stop - Press it to stop the operation of the product.

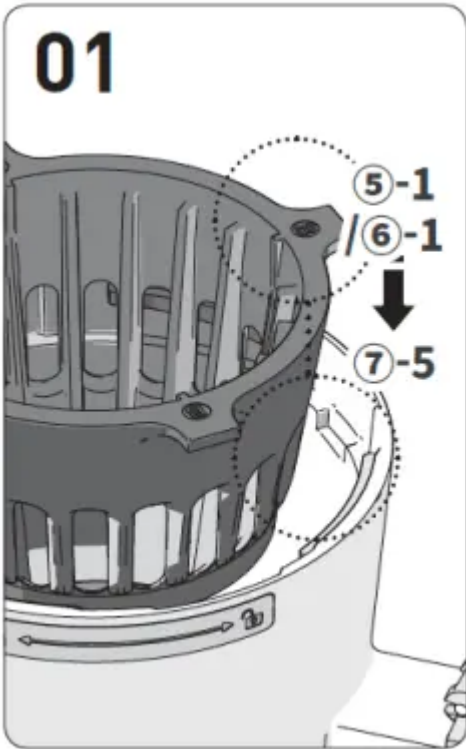


[REV] : REV - Press when the production halts while in use due to material overload. \* The appliance works only when the button is pressed, and it stops when the button is released.



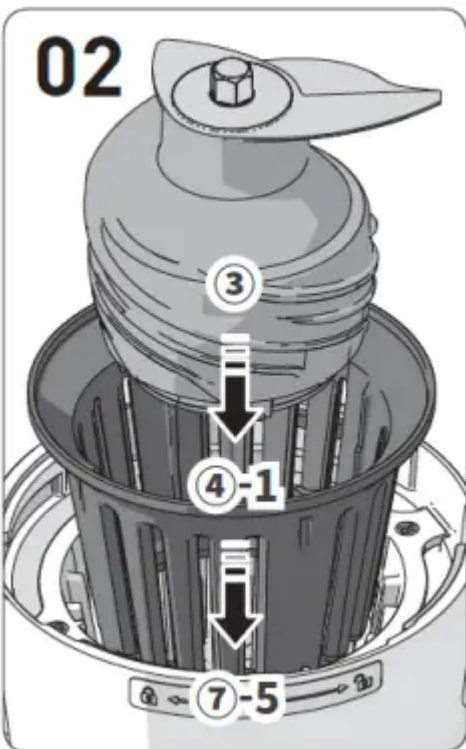
## How to Assemble

01. Make sure to align groove in the chamber ((7) - 5) external strainer wing ((5)/(6)).

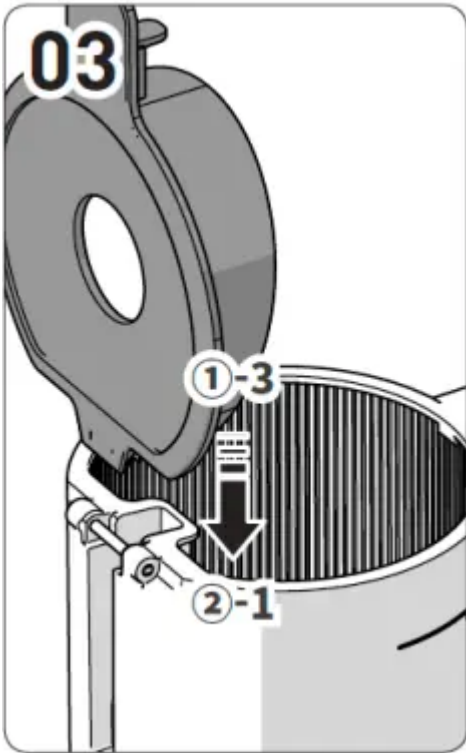




02. Assemble the inner strainer and squeezing screw onto the external strainer of chamber.

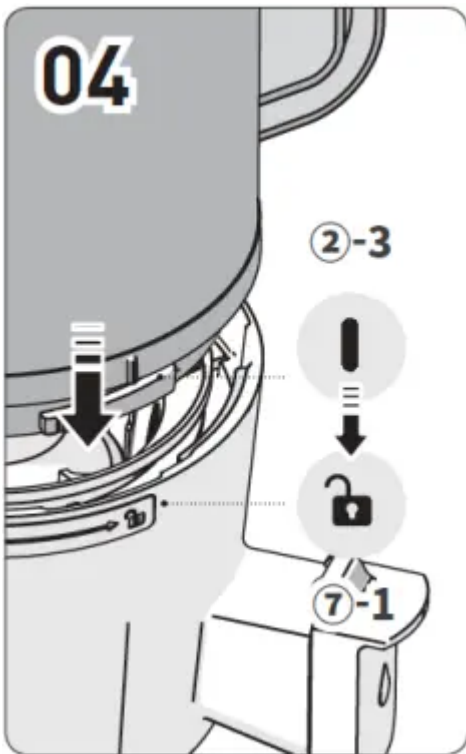
The settlement point of the inner strainer ((4)-1) and the wing of outer strainer ((5)-1 / (6)-1) should be aligned in place.




03. Place the hopper lid ((1)-3) vertically onto the hopper ((2)-1).

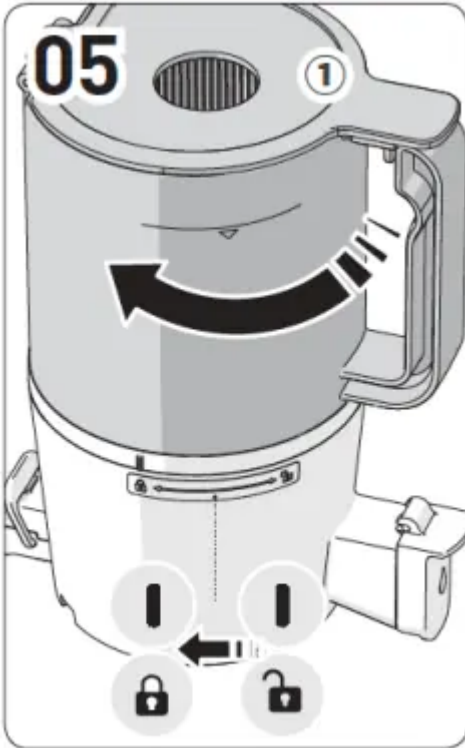


04. Align the guide mark ((7)-1) of the hopper [  ] with the guide mark ((2)-3) of the chamber [  ].



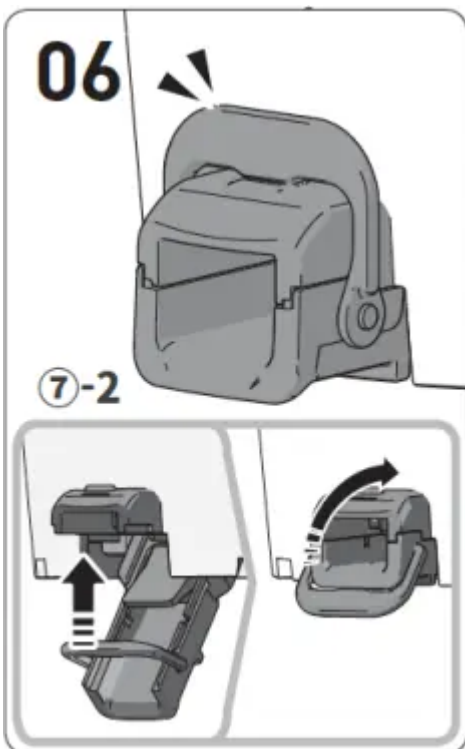
05. Turn the assembled hopper clockwise until its guide mark is aligned with the guide mark [  ] on the chamber.

If the internal components are not assembled correctly, the hopper will not close properly.



06. Make sure the discharge cover ((7)-2) of the chamber is properly fastened with the loop.

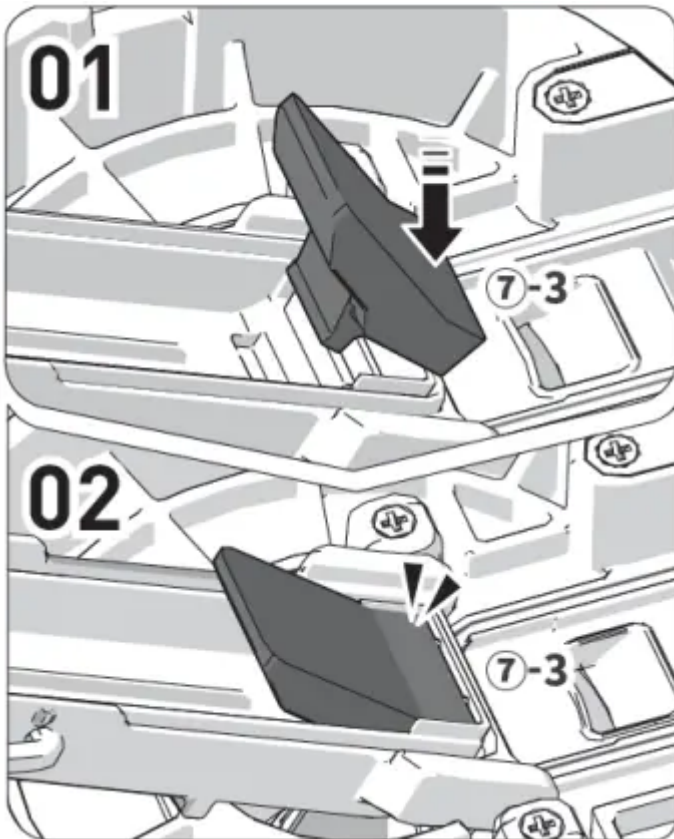
1. Close the discharge cover and fasten it with the loop.
2. If the silicone parts are not plugged in place, or the lever is not fastened, juice may leak or the lever may open during extraction.



07. Place the well-assembled chamber set onto the base.

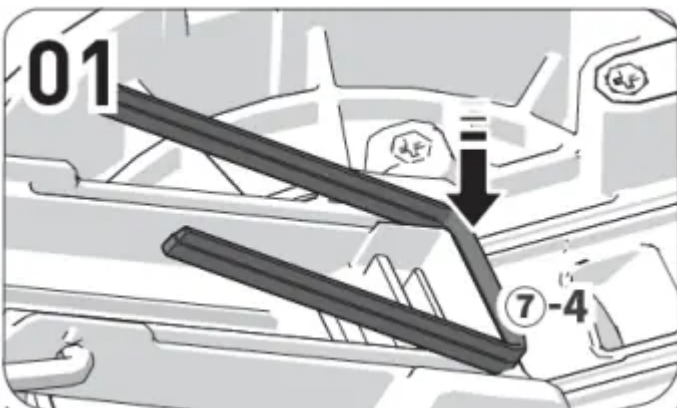
## Plugging and Unplugging Silicone

### Extraction Packing

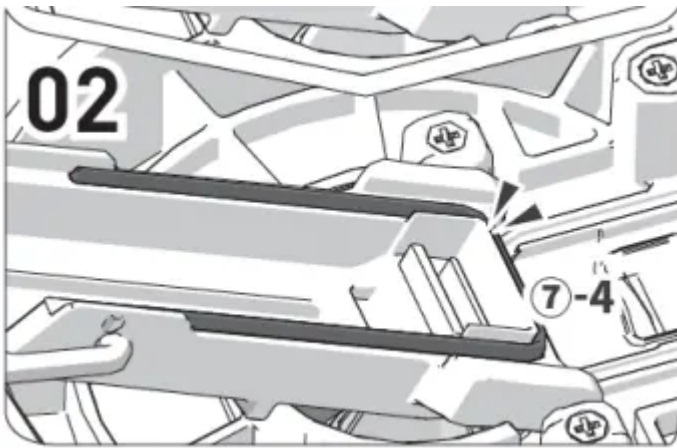


### Seal Packing

01. Hold the silicone ring and pull it out smoothly.

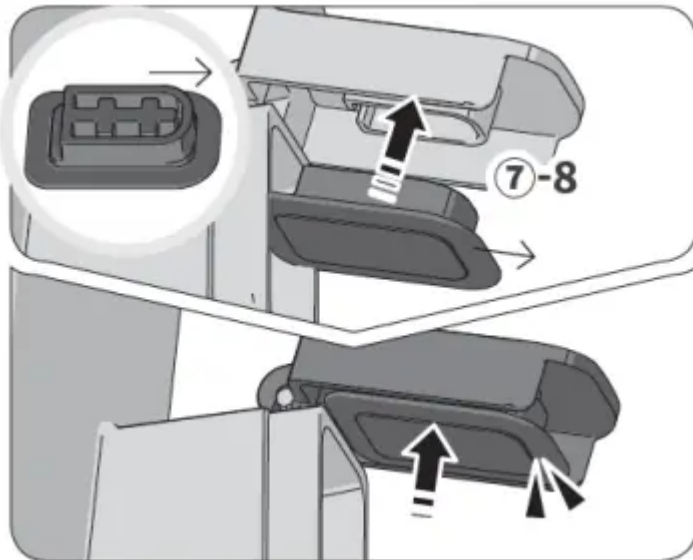


02. After cleaning, plug the silicone ring upright into the slot by fixing one end into place first.



03. Insert the rest and press down firmly.

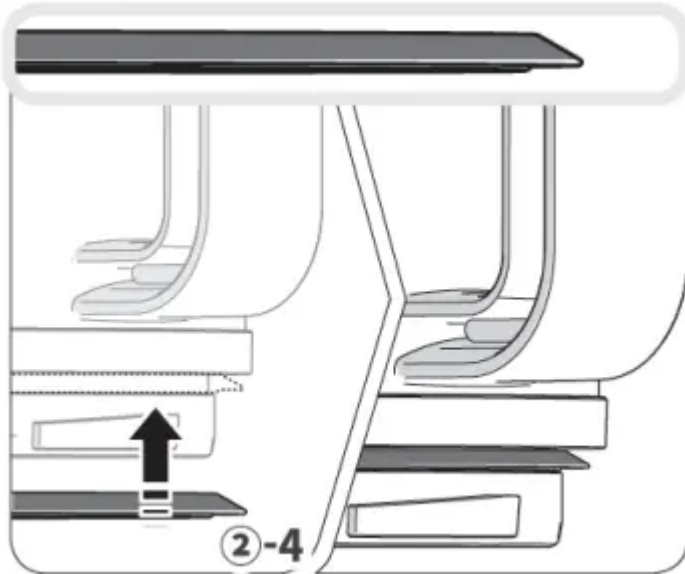
### Juice Cap Packing



After cleaning, firmly insert with the round side outward and the grid hollow facing upward.



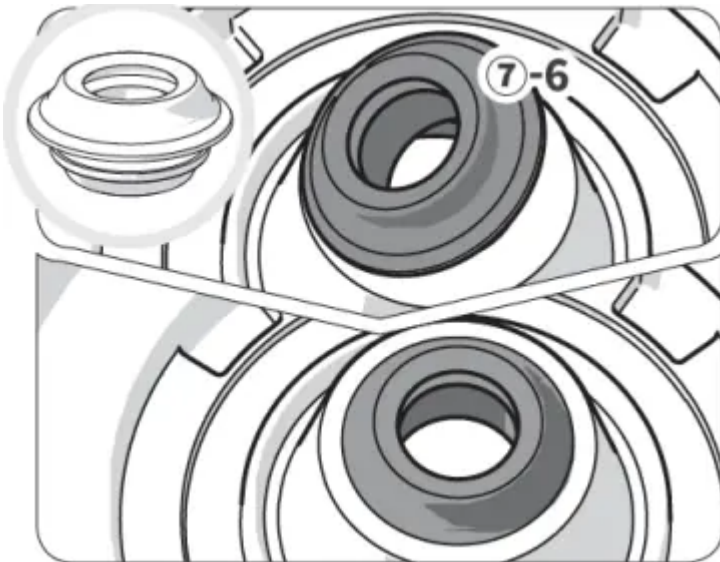
## Hopper Packing



Plug the silicone packings upright

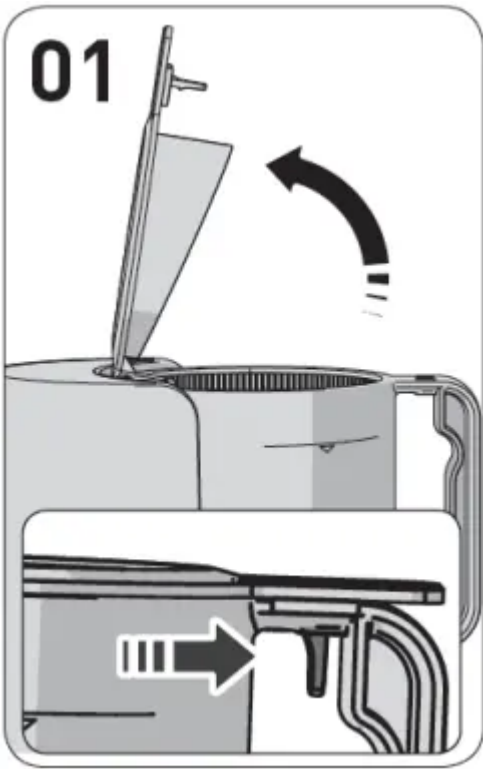
## Chamber Packing

01. Grab onto one side and pull out.
02. After cleaning, plug the silicone rings upright into the slot as if it is hanged one side first
03. Press the rest of packing down along the slot in place without any folded part.



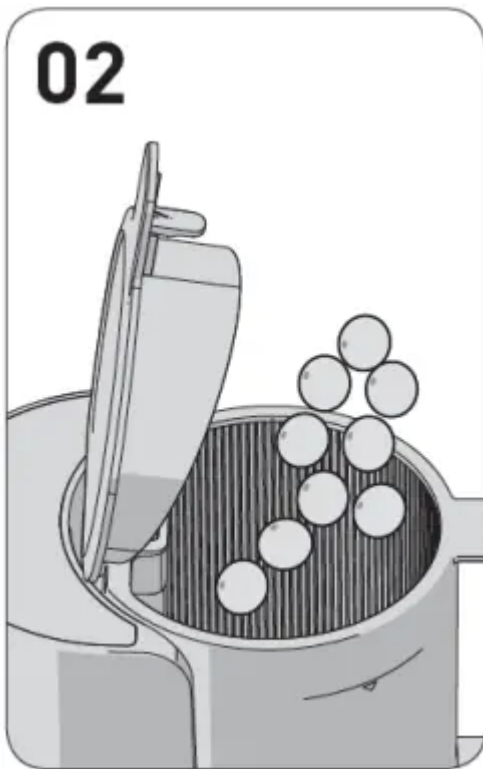
## How to operate

01. Pull up the lever inside the hopper knob and open the lid.
  1. Pull up the lever inside the hopper knob, and open the lid. Overloading the product with ingredients may damage the product.



02. Insert juicing ingredients below the limit mark of the hopper.

1. Use watery soft ingredients after mixing them with others.
2. When juicing in bulk, empty out the chamber and the pulp container frequently.



03. Close the hopper lid, and keep the juice cap open.

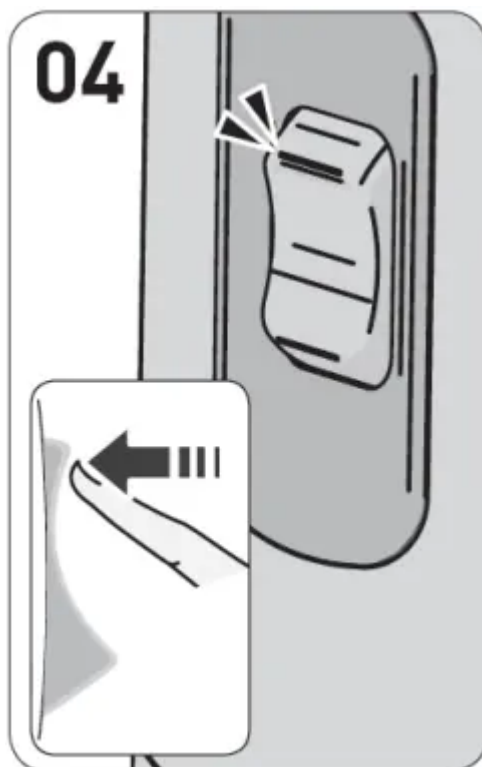
1. Before pressing the ON button, put the juice container in place.

2. The juice can flow backwards into the hopper if the juice cap is closed. If the juice doesn't empty even after opening the juice cap, open the hopper lid and remove the contents.



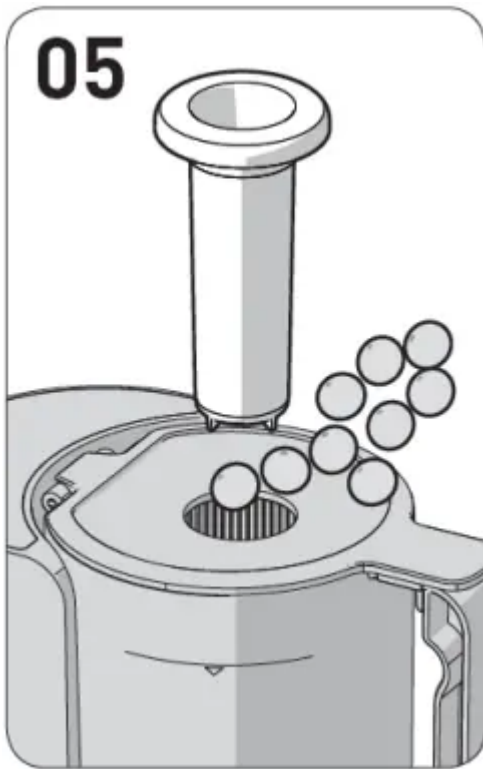
04. Press the [ON] button to start operation.

1. "Clicking" sound upon starting is made when the chamber set fits with the motor.

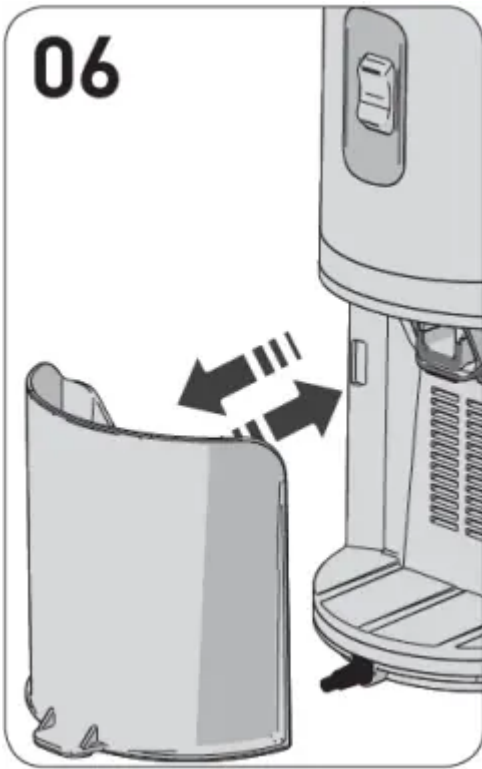


05 If you want to add more ingredients during operation, use the add door on the top or open up the hopper lid.

1. Operation stops when the hopper lid is open.
2. Do not use any other voltages other than the designated one.
3. When the screw spins and the ingredients are not being ground, use the pusher to push down ingredients.



06. Empty out the pulp container behind the base frequently in order to prevent the back of the product to become full with wastes.



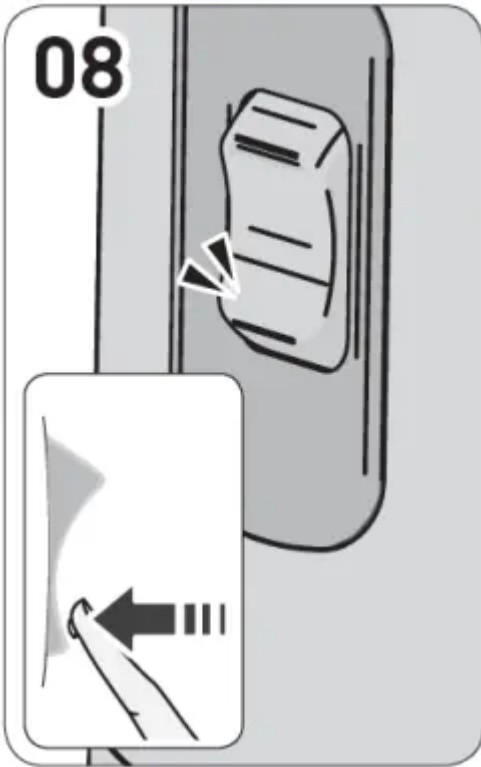
07. Let the product run for another minute or so after the last ingredient goes down through the hopper.

1. It takes some time for the last piece to be extracted as it is pressed down the product slowly.
2. Run the appliance after the extraction to send out residual pulp, and it will be easier to disassemble and clean the hopper.



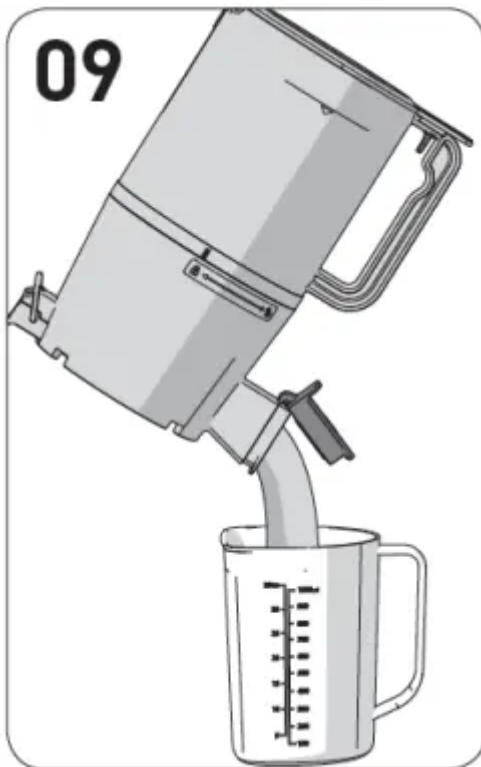
08. Once the extraction and release of residue is done, switch off the juicer.

1. The juicer stops 3 seconds after it is switched off.



09. Pour any juice left in the product by tilting the chambers forward.

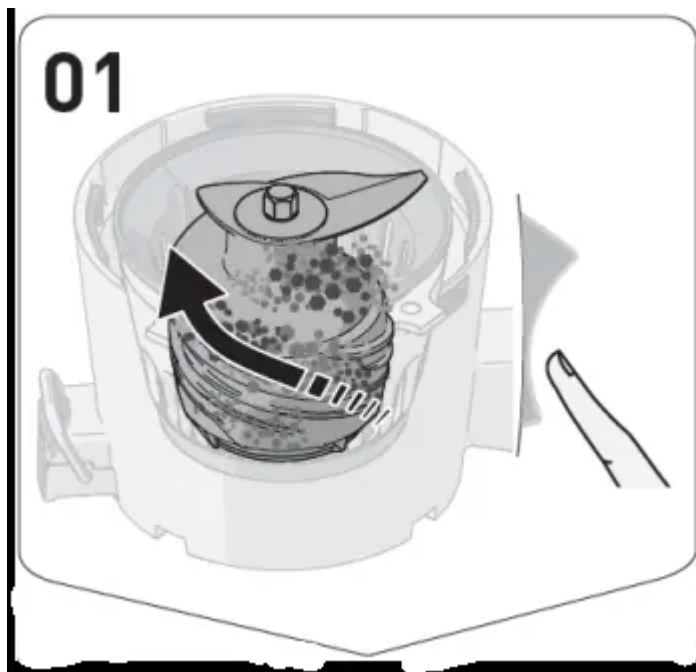
1. For thick juice like tomato juice, it is likely to pool in the chamber set.



## When the squeezing screw stops during normal operation

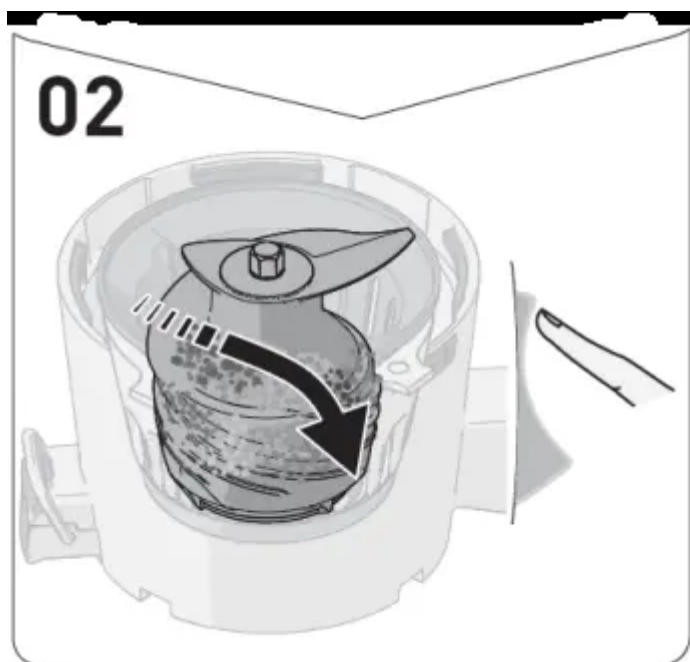
01. Press and hold [REV] button for 3 to 5 seconds and release the button 2 to 3 times.

[REV] button pushes the ingredients back up to dislodge. Reverse rotation continues only when the button is pressed while the screw stops when the button is released.



02. After reverse rotation stops completely, press the [ON] button to run operation.

When pressing the [ON/Extract] to [REV/Reverse] button, make sure to press it after the screw stops moving completely.



### Precautions

If the juicer does not work after these steps, unplug the appliance, and disassemble and clean the parts before operating the juicer again.

The motor will continue to spin after the machine is turned off, but it will slow down and come to a complete halt.

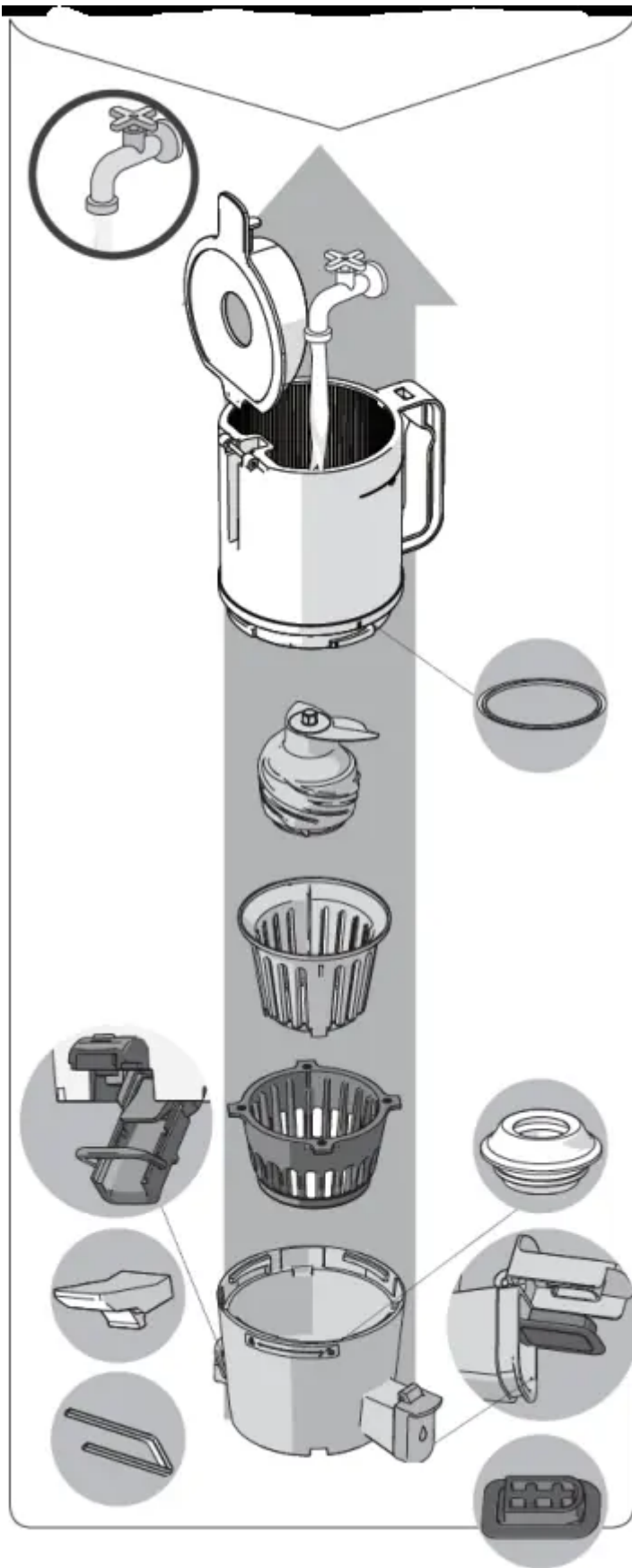
## How to Disassemble and Clean

After the product stop operating completely, unplug the power cord with your dry hands. The motor is still slowing down after the appliance is turned off, so wait about 3 seconds before separating the chamber.

01. Separate the chamber set from the base. Turn the hopper open and pull off the parts in order.

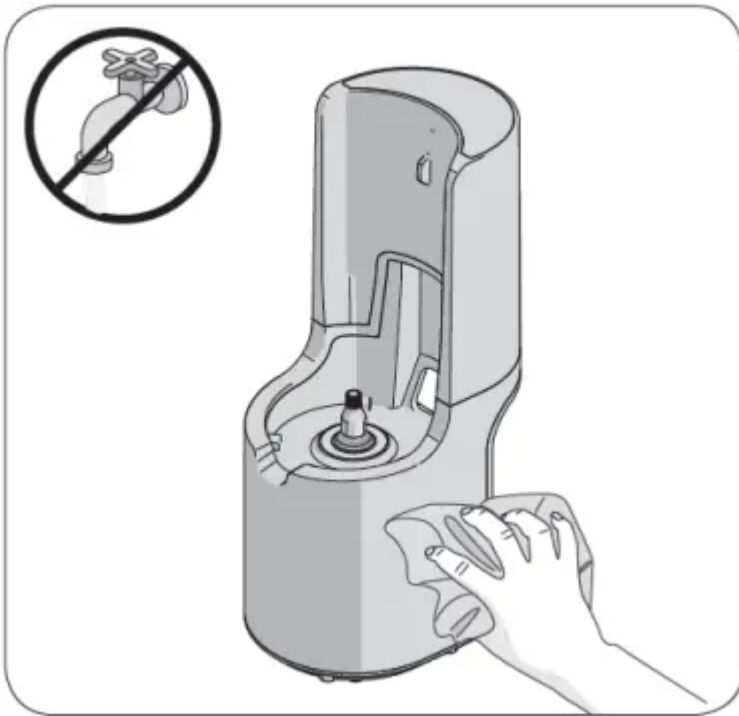


02. Wash the parts under running water with the cleaning brush.



03. Wash the chamber with the pulp outlet cover and the juice cap wide open.

04. Wipe the base with a dry towel or soft cloth.



05. For silicon rings, detach and wash them after use. -There may be juice residues stuck in (Hopper ring, juice cap, extraction cap, sealing, and chamber ring)

06. You can sterilize the parts by soaking them in warm water with baking soda, citric acid, or vinegar.

Failure to clean the product right after use can cause its stainless steel components and other parts to corrode or discolor due to salt and pulp of the ingredients. In addition, contaminants may dry up and get stuck inside the product, making disassembly or cleaning difficult or adversely affecting the product's performance. Be sure to clean and air dry the appliance completely after use and store it at a clean place. For long-term storage, clean the appliance with the cleaning brush in advance Do not clean the product with boiling water or subject it to high temperature. Do not use abrasive cleaning tool like kitchen sink cleaner, or stainless-steel sponge. Do not use a dishwasher or dish dryer for the product.

# Before Requesting Repair



<p>When the product starts operation, it will make a "clicking" sound.</p>	<p>This is the sound of when the motor and the squeezing screw are connected. and not a sign of malfunction.</p>
<p>The product won't operate with the main body only.</p>	<p>Make sure the chamber set and main body are assembled properly. Ensure the product is unplugged before assembling or disassembling it.</p>
<p>Align the safety sensors.</p>	<p>Make sure they are assembled in accordance with the assembly guide. Ensure the product is unplugged before assembling or disassembling it.</p>
<p>The product does not work.</p>	<p>Check if the power cord is plugged properly. The machine may not work after prolonged use (30 minutes or longer). It will resume normal operation once the main body (motor) cools down. Check if the hopper fits properly. If the hopper IS connected incorrectly, the product will not operate properly. It will operate only when the lock symbol on the chamber is perfectly aligned with the assembly guide on the hopper ((2)-3). Ensure the product is assembled in accordance With the assembly guide.</p>
<p>The product suddenly stops running.</p>	<p>Is the hopper overloaded with juicing ingredients, or are the ingredients too big?</p>
<p>There are cracks on the screw and scratch marks on the upper part of the screw.</p>	<p>In addition to the straight molding marks on the top and sides of the screw, there are curved marks that were created while it was being molded. These marks are normal and they have no impact on your use of the screw.</p>
<p>Juice leaks through the pulp outlet immediately</p>	<p>A little juice may come out of the pulp outlet depending on the ingredient.</p>



<p>upon inserting ingredients.</p>	<p>This is not a product defect but the result of the characteristics of the ingredient. The leakage will stop once the product starts running. If the leakage persists, contact our Customer Service Center.</p>
<p>Juice flows back into the hopper.</p>	<p>Did you operate the product with the juice cap closed? Closure of the juice cap may cause a back flow up to the hopper. If the flow gets clogged even after opening the juice cap, open the hopper lid and empty out the inside.</p>
<p>Juice leaks between the hopper and the chamber, or between the chamber and the main body.</p>	<p>if the chamber ring assembled silicone correctly? Juice will leak if the chamber silicone ring has been assembled upside down or incompletely. Check if the silicone rings have been assembled correctly.</p>
<p>I can't open the hopper.</p>	<p>There may be excessive pulp remaining inside. If the remaining pulp is discharged by turning on the machine, or the machine is rotated in reverse for 10 seconds two or three times, the hopper will open smoothly.  Perhaps you put foreign or solid substances (hard seeds such as persimmon seeds)? If you have put foreign or solid substances, attempting to run the product in reverse direction may further damage the component. Thus, contact our Customer Service Center and request after-sales support.</p>
<p>The chamber is vibrating (during juicing).</p>	<p>The product may wobble slightly due to the vibrations produced by the main body's motor. It may vibrate depending on the ingredient's further hardness or toughness. This is not a malfunction but a normal sign as is caused by the rotating screw. The product may seem to vibrate more when juicing solid ingredients (e.g., carrots, potatoes, radishes, beets, or kohlrabies) than when juicing soft and watery ingredients. (e.g., carrot, potato, radish, beet, kohlrabi, etc)</p>
<p>Pulp outlet is covered, but the pulp comes out.</p>	<p>Even if the lever is closed, pulp may still come out naturally.  The velocity and amount of pulp discharge may differ according to the ingredients used.</p>



An unusual noise is heard while juicing.

This is a natural sound when the ingredients are being crushed. If the ingredients are hard or tough, such as apples, carrots, cabbage, celery, beets, and so on, the noise may be louder than when juicing softer ingredients.

**Warning**

This content is compiled from multiple sources and is provided for reference purposes only. It may not be complete or fully applicable to all situations. If you are unable to resolve your issue, please contact the product manufacturer or an authorized service provider for official support.

