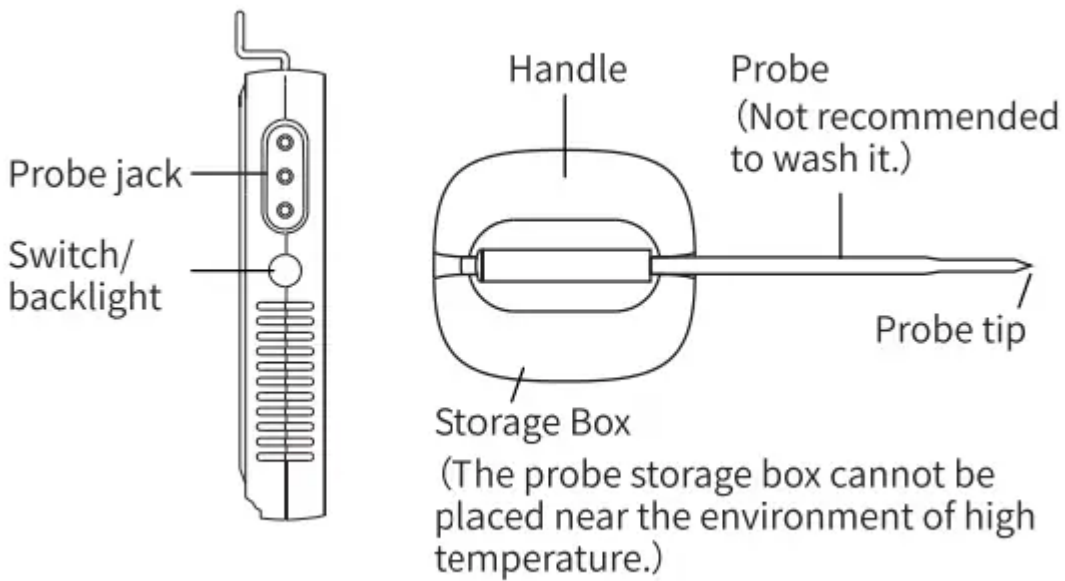
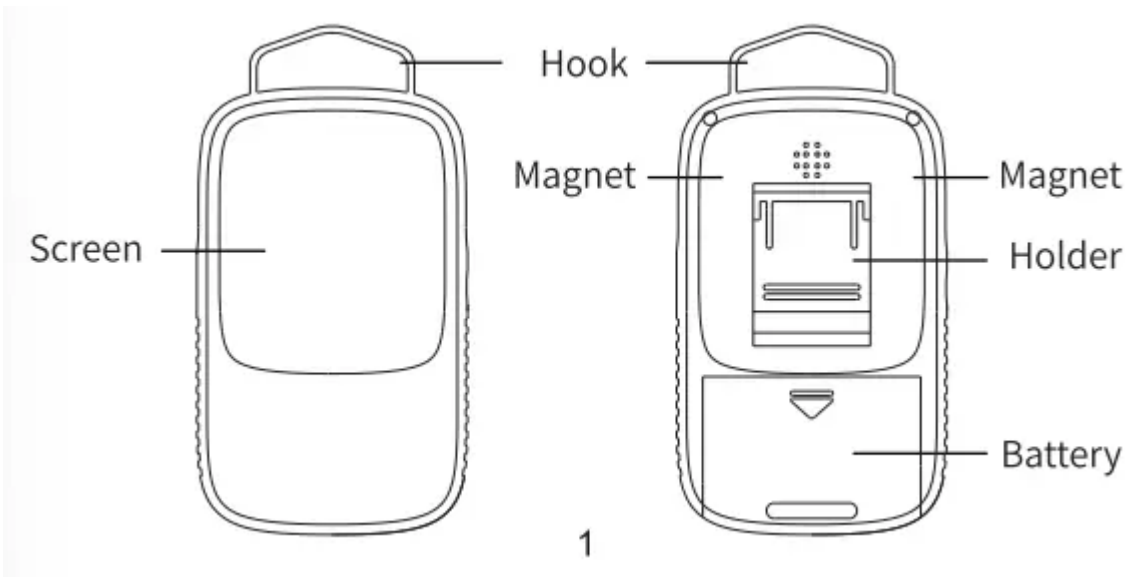
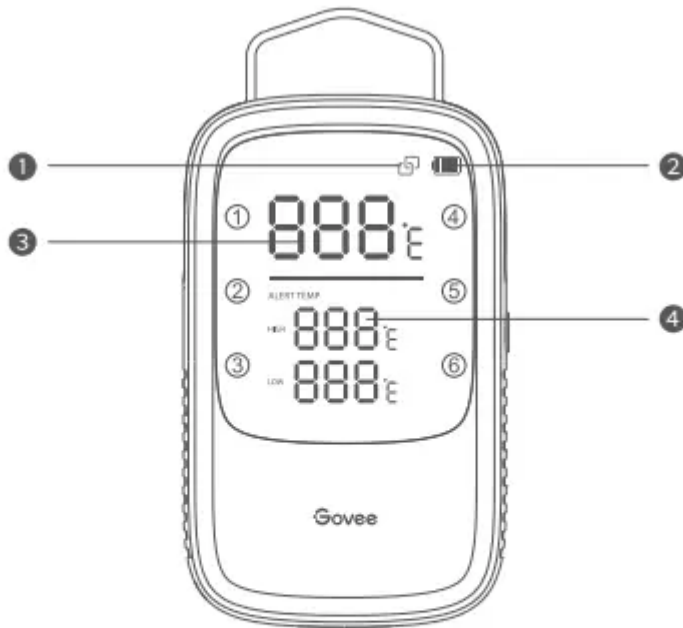


Packing list

SKU	B5055013	B5055014
Bluetooth meat thermometer	1	1
Probe	6	2
Probe storage box	6	2
AA Battery	2	2
User manual	1	1

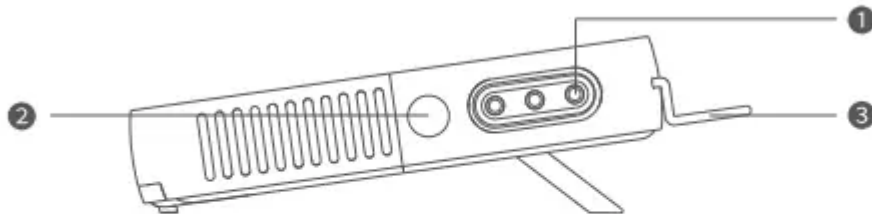


At a Glance



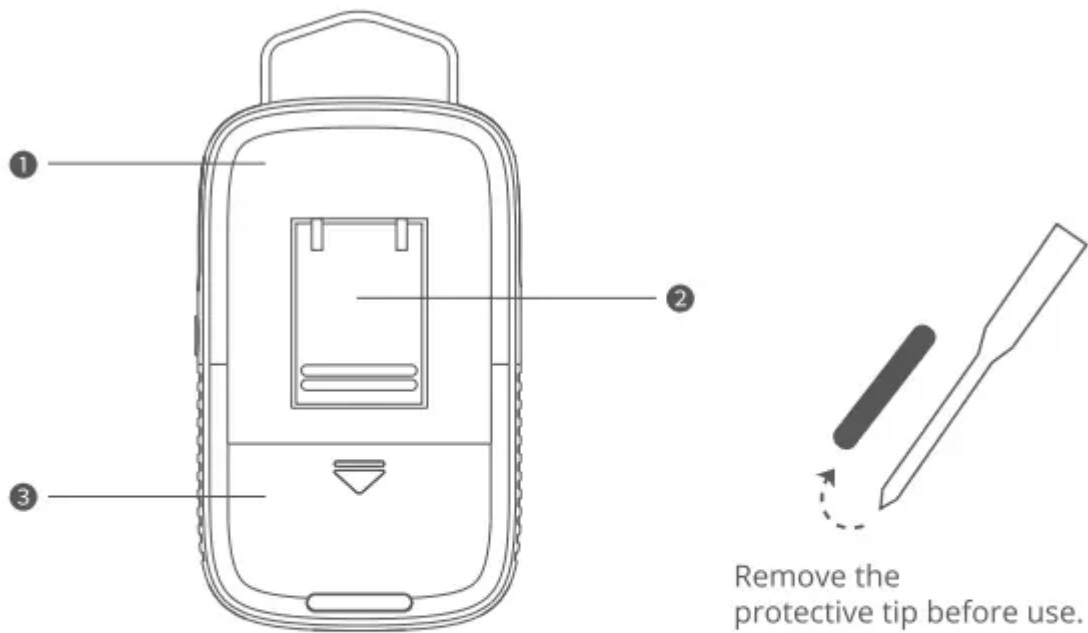
Screen Display

- 1 Bluetooth-connected
- 2 Battery Level
- 3 Current Probe Temperature
- 4 Preset Temperature Alert



Side View

- 1 Probe Port
- 2 Switch/Backlight
- 3 Hanging Hook



Back View

❶ Magnet

❷ Stand

❸ Battery Compartment

Buttons

Backlight/Power On/Off

1. Long press the orange button for 5s to power On/Off/
2. Press to switch between different probes

Pairing Your Device with the Govee Home App

What you need

A smartphone or table running IOS 8.0 (or bove) ò Android 4.3 (or bove).



1. Download the Govee Home app from the App Store (iOS devices) or Google Play (Android devices).
2. Enable Bluetooth on your smartphone.
3. Open the app. tap the "+" icon in the top right corner and search "5055".
4. Tap the device icon and follow the onscreen instructions to complete pairing.

Controlling Your Device with the Govee Home App

Temperature Monitoring

1. Prepare a smart phone or tablet running iOS 9.3 (or above) or Android 4.3 (or above);
2. Download the Govee Home app from the App Store (iOS devices) or Google Play (Android devices).

Alert Preset

1. Recommended preset temperatures for 6 types of food.
2. Adjust the preset temperature yourself. When the temperature reaches the preset temperature level. the meat thermometer will sound an alarm. and you will receive an alert notification via the Govee Home app

Specifications

Bluetooth Distance	60m/197ft (No obstructions)
Battery	AA battery
Probe Accuracy	$\pm 1^{\circ}\text{C}/\pm 1.8^{\circ}\text{F}$ ($0^{\circ}\text{C} \sim 150^{\circ}\text{C}/32^{\circ}\text{F} \sim 302^{\circ}\text{F}$) $\pm 2^{\circ}\text{C}/\pm 3.6^{\circ}\text{F}$ ($150^{\circ}\text{C} \sim 300^{\circ}\text{C}/302^{\circ}\text{F} \sim 572^{\circ}\text{F}$)
Volume	80dB (in 10cm distance)
Probe Measure Range	$0^{\circ}\text{C} \sim 300^{\circ}\text{C}/32^{\circ}\text{F} \sim 572^{\circ}\text{F}$

Instructions

1. Installation

- a. Take out the insulation sheet in the battery box;
- b. Long press the switch to turn on devices

2. Download APP

Search and download the APP "Govee Home" in APP store (IOS) or Google Play (Android).

3. Add the device

Open the APP. when enter home page. click the icon "+" in the top right comer to enter Govee device list.

Select H5055. follow the APP prompt to add the device.

Troubleshooting

1. The screen displays LLL/HHH

Please check whether the probes are firmly inserted into the device. In addition, the screen would display

LLL/HHH when the probes detect a temperature exceeding. Please remove the probe in time.

2. Can' treceive the alert

Please confirm whether the Bluetooth is turned on in your phone. When using the device. you need to open the

APP and ensure that the device is within the range of Bluetooth.

3. Can't set the device

Ensure that the device is within Bluetooth range. Please turn on the device and the Bluetooth of your phone;

then open the APP to set up.

Warning

This content is compiled from multiple sources and is provided for reference purposes only. It may not be complete or fully applicable to all situations. If you are unable to resolve your issue, please contact the product manufacturer or an authorized service provider for official support.