

# User's guide Iron

\* EN Please read carefully the "Safety and use instructions" booklet before first use



1. 



2. 



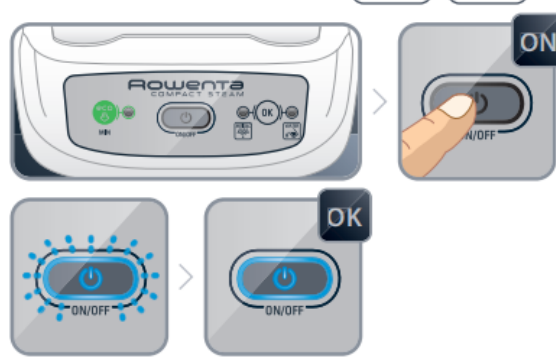
3. 



4. 



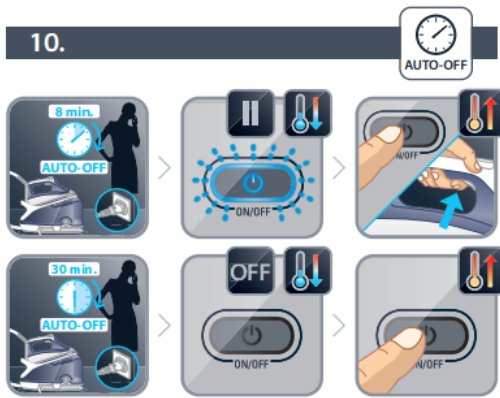
5.  





\* EN Depending on model / FR Selon modèle / ES Según modelo





12.



13.



1800134893-23/15

### Important recommendations

## Safety instructions

When using your appliance, basic safety precautions should always be followed, including the following:

### READ ALL INSTRUCTIONS BEFORE USING

1. Use appliance only for its intended use.

2. To protect against a risk of electric shock, do not immerse the appliance in water or other liquids.
3. The appliance should always be turned off before plugging or unplugging from electrical outlet. Never pull the cord to disconnect from outlet, instead grasp plug and pull to disconnect.
4. Do not let the power cord touch hot surfaces. Let the steam station cool completely before putting it away. Wind up the power cord and attach it with the Velcro.
5. Always disconnect appliance from electrical outlet when filling or emptying water and when not in use.
6. Do not operate appliance with a damaged cord or if appliance has been dropped or damaged. To avoid the risk of electric shock, do not disassemble the appliance. Contact Consumer Services or take it to a qualified service person for examination and repair. Incorrect reassembly can cause a risk of electric shock when the appliance is used after reassembly.
7. Close supervision is required for any appliance used by or near children. Do not leave the iron unattended while the appliance is connected or on an ironing board.
8. Burns can occur from touching hot metal parts, hot water or steam. Use caution when you turn a steam station upside down. There may be hot water in the reservoir.
9. This is a 1800 watts appliance. To avoid a circuit overload, do not operate a steam station on the same circuit with another high wattage appliance.
10. If an extension cord is absolutely necessary, a cord with 15A or greater shall be used. A cord rated for less amperage can result in a risk of fire or electric shock due to overheating. Care shall be taken to arrange the cord so that it cannot be pulled or be tripped over. Any commercial use, inappropriate use or failure to comply with the instructions, the manufacturer accepts no responsibility and the guarantee will not apply.
  - For your safety, this appliance conforms to the applicable standards and regulations (Low Voltage, Electromagnetic Compatibility, Environmental Directives, as applicable...).

This product has been designed for domestic and indoor use only.

Your steam station is an electrical appliance: it must be used in normal conditions of use.

It is fitted with 2 safety systems:

- A pressure release valve which, in the event of a malfunction, releases any excess steam.
- A thermal fuse to prevent the appliance from overheating.

Always plug your steam station into:

- An electrical installation with voltage 120V.

Connecting to the wrong voltage may cause irreparable damage to the appliance and will invalidate your guarantee.

- The appliance must not be left unattended while it is connected to the outlet.
- The plug must be removed from the outlet before the water reservoir is filled with water.
- The appliance must be used and rested on a stable surface.
- When placing the appliance on its stand, ensure that the surface on which the stand is placed is stable.
- The appliance is not to be used if it has been dropped, if there are visible signs of damage or if it is leaking.
- If the supply cord is damaged, it must be replaced by the manufacturer, its service agent or similarly qualified person in order to avoid a hazard.
- This appliance is not intended for use by persons (including children) with reduced physical, sensory or mental capabilities, or lack of experience and knowledge, unless they have been given supervision or instruction concerning use of the appliance by a person responsible for their safety.
- Children should be supervised to ensure that they do not play with the appliance.
- Do not direct steam at people, animals or iron clothes while they are being worn.
- Do not use any descaling products (vinegar, industrial descaling products, etc.) to rinse the boiler: they may damage the appliance.
- Before rinsing the boiler/rinsing the anti-calc collector (depending on the model), wait until the appliance is completely cold and has been unplugged for at least 2 hours before unscrewing the boiler rinse cap/ the scale collector cover.
- Warning: if the boiler cap or the boiler rinse cap (depending on the model), is dropped or severely knocked, have it replaced by an Approved Service Centre, as it may be damaged.
- Never fill the boiler directly from the tap.
- The boiler cap must not be opened during use..

## **What water to use?**

- Tap water: Your appliance has been designed to use tap water. If your water is very hard, mix 50% tap water and 50% bottled demineralised water. In some coastal areas, the salt content of the water may be high. In such cases, use only demineralised water.
- Water softener: There are several types of water softeners available and most of them can be used in the generator. However, some softeners (especially those that use chemicals such as salt) may cause white or brown streaks. This is often the case when using water from filtering jugs. If you experience this sort of problem, we suggest you try using untreated tap water or bottled water.

- NB: Never use rain water or water containing additives (such as starch, fragrances or water from household appliances). These additives may affect the properties of the steam, and together with high temperatures can cause deposits to form in the steam chamber which could soil your laundry.

### **SAVE THESE INSTRUCTIONS**



**Environment protection first !**

Your appliance contains valuable materials which can be recovered or recycled. Leave it at a local civic waste collection point.

## Problems with your iron?

<b>Problem</b>	<b>Possible Causes</b>	<b>Solutions</b>
Water runs out of the holes in the soleplate.	The water has condensed in the pipes because you are using steam for the first time or you have not used it for some time.	Press the steam control button holding the iron away from your ironing board until the iron produces steam
Water streaks appear on the laundry.	Your ironing board cover is saturated with water because it is not suitable for use with a steam generator.	Check that your ironing board is suitable (vented/mesh type ironing board to avoid condensation).
White streaks come out of the holes in the soleplate.	Your water tank has a build-up of scale because it has not been rinsed out regularly	Rinse the anti-calc collector (see the “descaling your generator” section or “rinse the boiler”. (depending on model).
Brown streaks come out of the holes in the soleplate and stain the laundry.	You are using chemical descaling products or additives in the ironing water.	Never add any products to the water tank (see section on "What water to use?" ).
The soleplate is dirty or brown and may soil clothes.	You are ironing at too high a temperature.	Clean the soleplate as indicated in the user manual Use a lower temperature.
The soleplate is scratched or damaged.	You have positioned your iron flat on a metallic iron support or ironed over zips or metal fasteners.	Always stand the iron upright or on the iron rest.
The red "WATER" light is on*.	The water tank is empty.	Fill the water tank.

The "anti-calc" light flashes*.	You have not pressed the "OK" restart button.	Press the "OK" restart button on the control panel until the light goes out.
The steam generator does not switch on or the iron indicator light and the "ON-OFF" light are not lit up*.	The "AUTO-OFF" system was activated after 30 minutes of non-use and has switched off your steam generator.	Press the "ON-OFF" restart button located on the control panel.
The red "WATER" light is flashing and the "ON-OFF" button does not work*.	The appliance has been stored in a cold place (approximately <10C°).	Unplug the appliance Wait 3 hours for the appliance to reach room temperature.

\* Depending on model

If you have any problems or queries please call our Customer Relations team first for expert help and advice.

## FAQ

### What type of ironing board should I use?

Choose a board that is height-adjustable to adjust it to your height. It should be steady and robust so that you can place the ironing appliance on it.

The board should be perforated to allow the steam to pass through the fibres of the fabric to soften it and make ironing easier. The ironing board cover should also be suitable to allow the flow of steam through.

### What is the vertical steam function used for? How do I use it?

This function allows you to iron fabrics in situ or on a hanger.

To do this, set the iron temperature button to the maximum position.

- Leave the item on a hanger and gently pull the fabric with one hand.

- Press the steam control button intermittently and move the iron from top to bottom.

As the steam produced is very hot, it softens the fibres and removes creases.

Note: Never use the vertical steam function on an item being worn by anyone.

### **Can I get steam on every setting?**

Yes this is because the steam is generated in a separate area away from the soleplate of the iron. This allows you to obtain steam on the lowest heat setting, e.g. silks. However, when the iron temperature control is set to the lowest setting you must also set the steam output control dial (depending on the model) to the low position, otherwise water droplets may appear in the steam.

### **How can I avoid scratching the soleplate of my iron?**

To avoid damaging the soleplate, follow this advice:

- Always place your iron on its heel rest or its base (depending on model).
- Avoid ironing over abrasive items (buttons, zip fastenings, etc.).
- Never clean your iron's soleplate with abrasive or metallic pads.

### **How can I avoid shiny marks on fabric?**

Shiny marks can appear on some fabrics, especially on dark coloured fabrics. We would advise ironing dark clothes inside out and using the correct temperature.

If ironing mixed-fibre fabrics, set the temperature for the most fragile fibre.

Important: The iron takes longer to cool down than to heat up. We recommend that you start with fabrics to be ironed at a low temperature.

### **What water should I use for ironing?**

#### **• Tap water:**

- Your appliance has been designed to work with tap water. If your water is very hard (hardness higher than 30°f or 17°dH or 21°e), mix 50% tap water with 50% distilled water (available in stores).
- In some seaside regions, the salt content in your water may be high. In this case, use distilled water only.

#### **• Softener:**

- There are several types of softeners and the water in most of them can be used in the steam generator. However, some softeners, especially those that use chemicals such as salt, can cause white or brown stains. This is particularly the case for filter jugs.
- If you experience this sort of problem, we suggest you try using untreated tap water or bottled water.

- **Remember:** Never use rainwater, pure demineralized water or pure distilled water from shops, or water containing additives (such as starch, perfume or water from other household appliances). Such additives can affect the steam properties and at high temperatures, form deposits in the steam generator chamber, which are likely to stain your laundry and cause premature ageing of the appliance.

### **How do I maintain my steam generator?**

Before any maintenance, make sure that the appliance is unplugged and that the soleplate, boiler and iron rest have cooled down (at least 2 hours after ironing).

Do not use any maintenance or descaling product to clean the soleplate or the base unit. Never hold the iron or its base unit under a running tap.

Cleaning the base unit:

- Wipe the plastic parts from time to time using a slightly damp soft cloth.

Maintaining the boiler (once a month):

- Please note: To prolong your boiler's efficiency and avoid scale deposits, you must rinse the boiler every 10 uses (around once a month).
- Check that the generator is cool and has been unplugged for more than 2 hours.
- Slowly loosen the boiler cap. If your generator boiler has an anti-calc rod, take this out and rinse it under the tap before placing it back in the boiler.
- Use a jug to fill the boiler with tap water until it is 3/4 full.
- Shake the base unit gently for a few seconds then empty it completely over the sink.
- For best results, we recommend that you perform this operation once again.

If you live in a hard water area, do this more often. Most of all, do not use any descaling products to clean the boiler as they could damage it.

### **How do I descale my steam generator?**

Descaling operation is not needed for the steam generator, nevertheless, you could rinse the boiler every 10 uses (refer to user manual).

Never use any descaling agent or vinegar when rinsing the boiler: they could damage it.

- Models with scale collector: Rinse the scale collector under water. The next time you use your generator, press the "restart" button to turn off the orange "Anti-calc" light (depending on model).
- Models without scale collector: Rinse the boiler. The next time you use your generator, press the "restart" button to turn off the orange "Anti-calc" light (depending on model).

## How do I clean the soleplate?

- **The Durillium soleplate:**

- Regularly clean the soleplate with a damp, non metallic washing up pad. For easier, non-corrosive cleaning of your iron's soleplate, use a damp sponge on the soleplate while it is still warm.
- If cleaning dirt off is an issue, use the stick which is made specifically for cleaning the Durillium soleplates.

- **The stainless soleplate:**

- Clean the soleplate of your iron when it is cool with a damp cloth or a non-abrasive sponge.

- **The autoclean soleplate:**

- It is recommended that you use a soft damp cloth on the warm soleplate, in order not to damage the surface.

Warning: The use of iron cleaner will cause damage to your soleplate's autoclean coating.

## Should I be concerned about any noises from my generator?

No. When starting or using the steam generator you may hear a pumping or vibrating noise along with a clicking sound. This is completely normal and is just the pump injecting water into the boiler or the steam valve opening.

## Why does my orange light keep flashing after I have just rinsed the boiler?

After rinsing the boiler, you need to press and hold the restart button for about 3 seconds to stop the light flashing.

## Steam escapes from the anti-scale Valve Plug.

The anti-scale valve plug may be tightened incorrectly or the seal on the inside of the cap has perished.

## Is it normal for the steam cord to get warm during ironing?

Yes. However, if you notice that the steam cord is damaged, have it repaired by an authorised service partner.

## My iron drips.

Place the iron's temperature control to the type of fabric to be ironed and set the steam output (If the setting temperature control is on Synthetics, the setting steam control must be on MIN)

## Some waterdrops drip out onto the floor during ironing.

It is normal. Your iron generates a lot of steam; this steam is condensing on the board. Some waterdrops could appeared underneath the ironing board and fall on the flooring

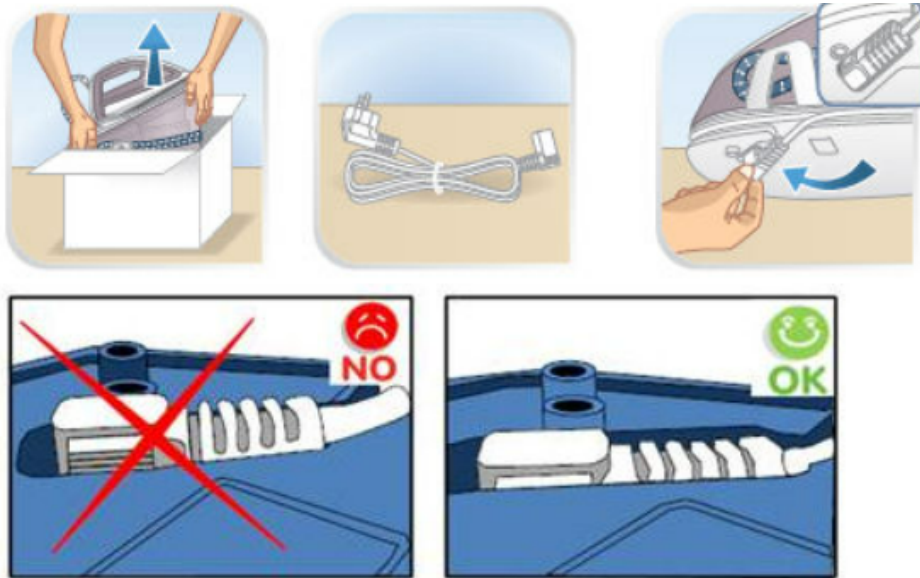
## Why does my red water light keep flashing?

If your red water light is flashing there is no water in the water tank or the tank is not fully or firmly pushed down.

**Power supply:** appliance doesn't work or it turned off while in use...

Your appliance features a removable power cord. This power cord must be plugged in under the appliance.

Make sure that it's securely plugged into its socket. If the problem persists, take your appliance to an authorized repair technician.



### Warning

This content is compiled from multiple sources and is provided for reference purposes only. It may not be complete or fully applicable to all situations. If you are unable to resolve your issue, please contact the product manufacturer or an authorized service provider for official support.