

## WHAT'S IN THE BOX



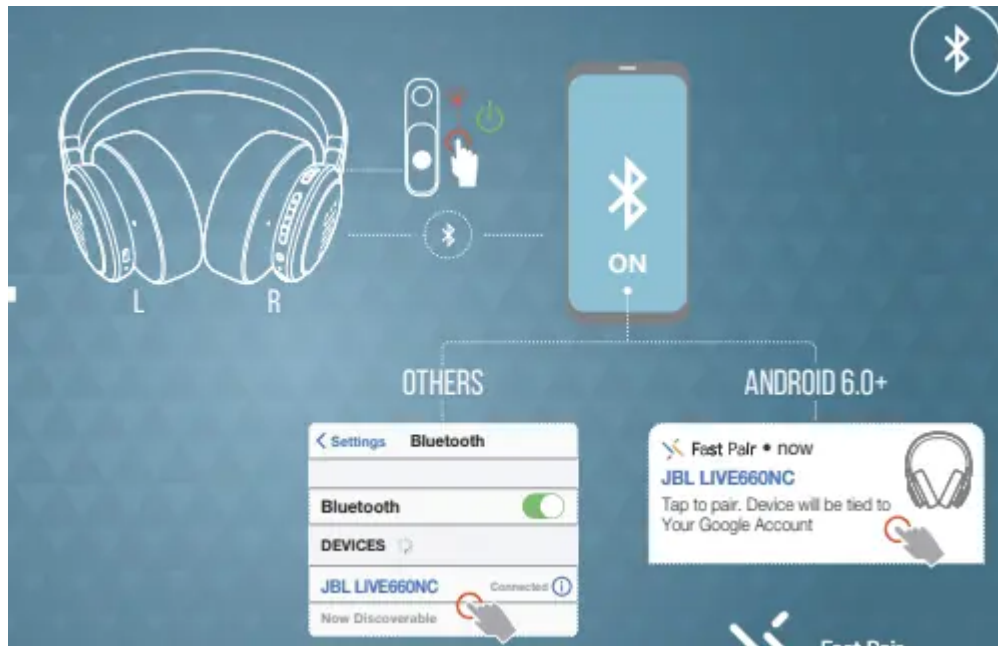
## APP



GET EVEN MORE CONTROL AND PERSONALIZATION OF YOUR LISTENING EXPERIENCE WITH THIS FREE APP.



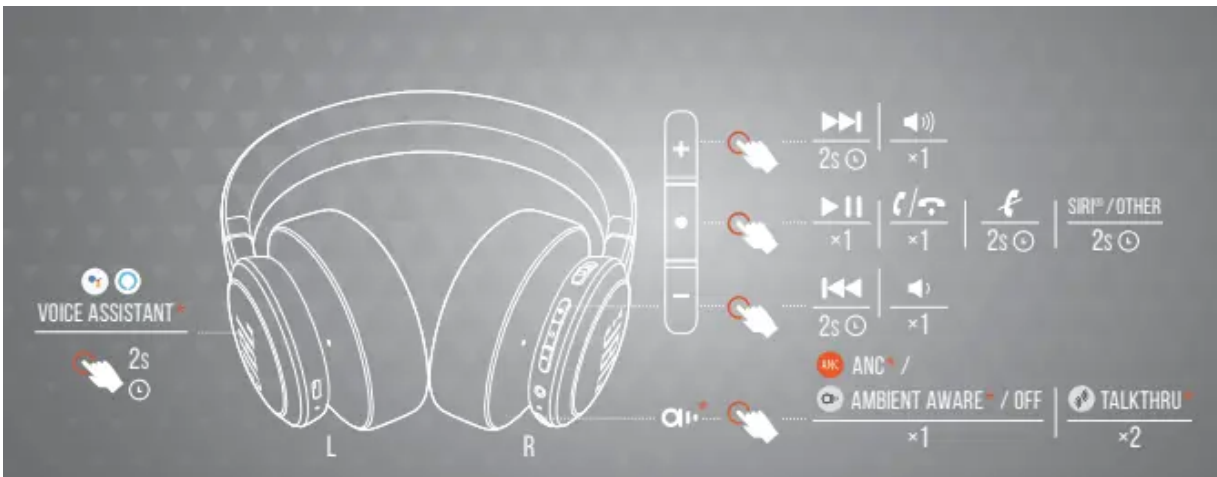
## Power on & CONNECT



## Multi-point connection

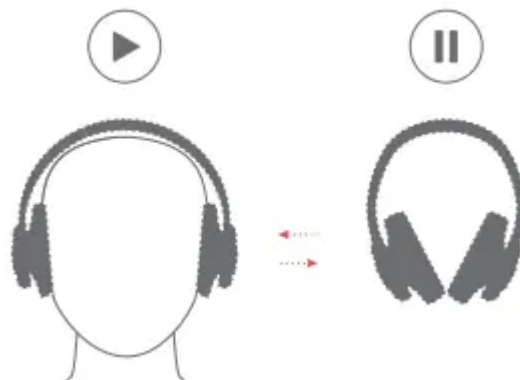


## BUTTON COMMAND

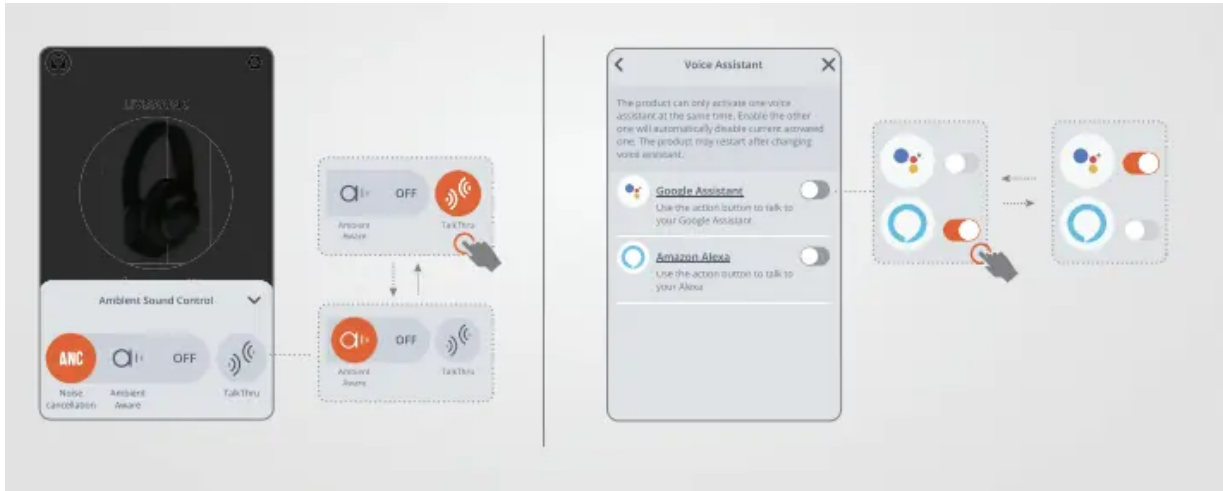


\* Enable advance controls by connecting your JBL LIVE660NC to My JBL Headphones App .

## Auto-play/pause



## DO MORE WITH THE APP



## HANDS-FREE VOICE CONTROL

Get more done on the go. Say "Ok Google" to get started.

"Play my Workout playlist"

"Turn up the volume"

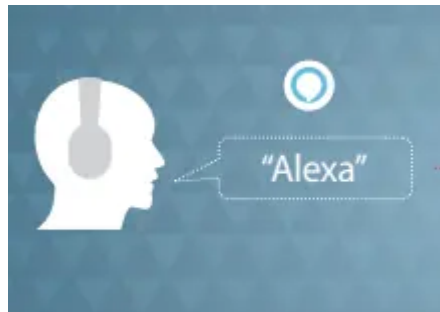
"Send a message"

"What's my schedule today?"

"Set an alarm for 7 AM"



## HANDS-FREE VOICE CONTROL



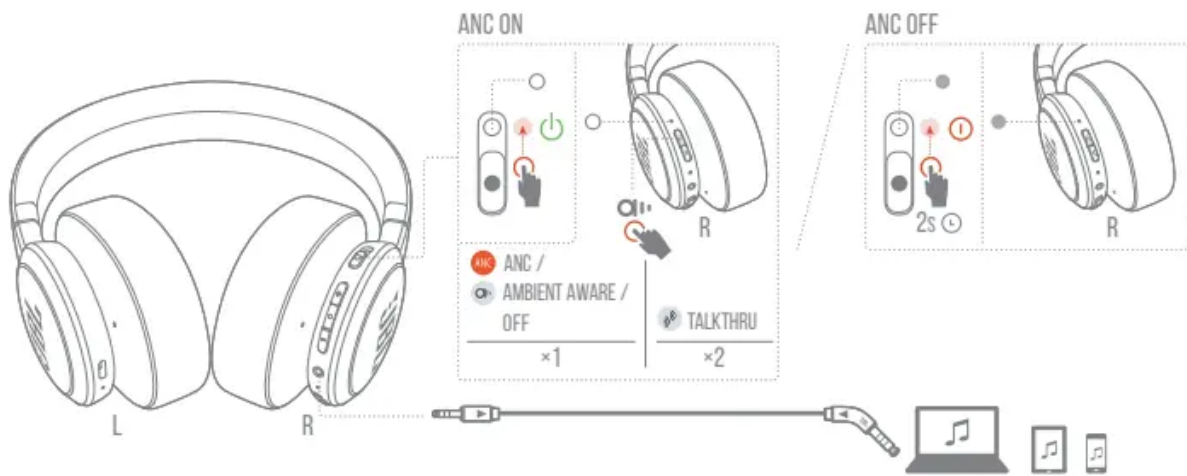
"What's the weather?"

"Play today's hits"

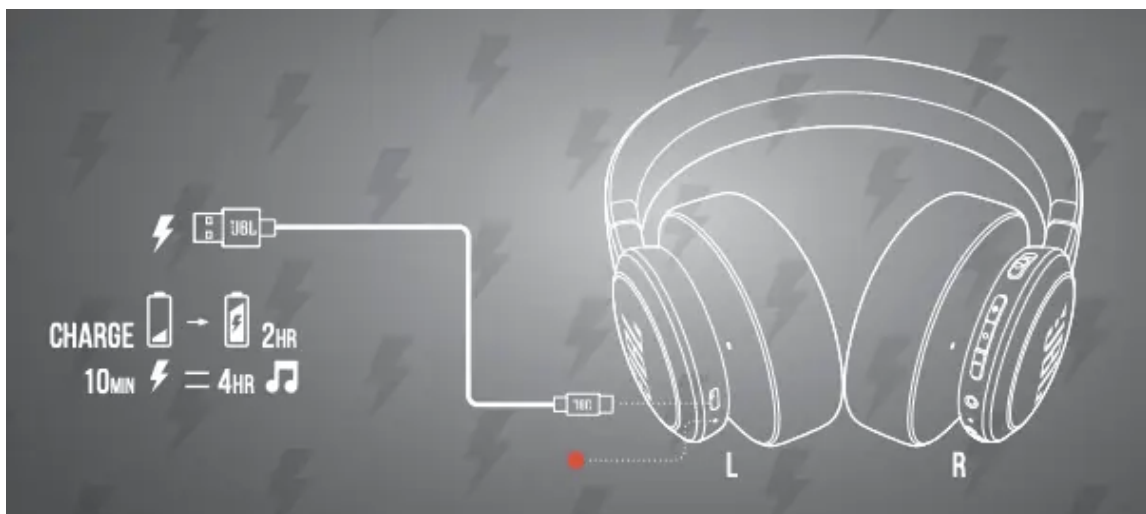
"Turn on the lights"

...

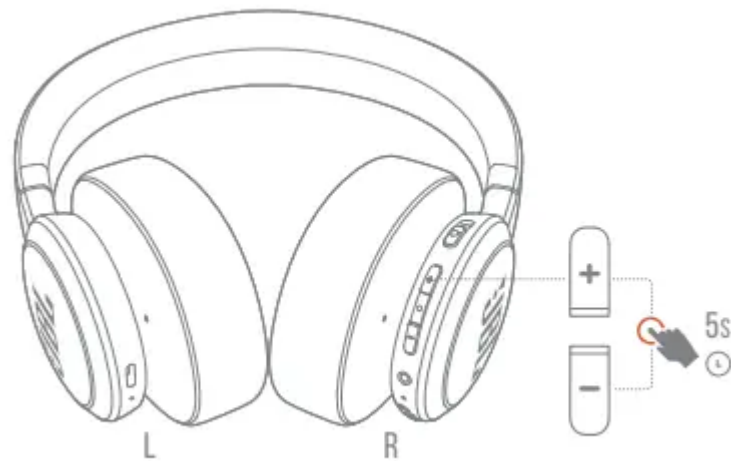
## Wired listening mode



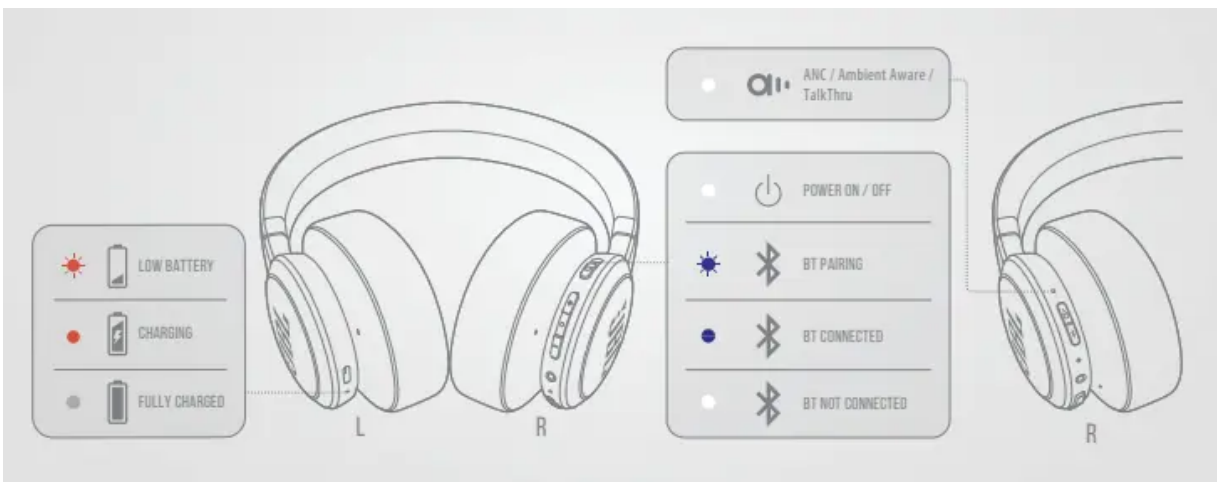
## Charging



## FACTORY RESET



## Led behaviors



## TECH SPEC

Model: LIVE660NC

Driver Size: 40 mm/1.6" Dynamic Driver

Power supply: 5 V, 1 A

Weight: 265 g/0.6 lbs

Battery type: Lithium-ion Polymer (750 mA/3.7 V)

Charging time: < 2 hrs from empty

Music playtime with BT on and ANC off: Up to 50 hrs

Music playtime with BT on and ANC on: Up to 40 hrs

Frequency Response: 16 Hz – 20 kHz

Impedance: 32 ohm

Sensitivity: 97 dB SPL@1 kHz/1 mW Maximum

SPL: 94 dB SPL

Microphone sensitivity: -19 dBV@1 kHz/Pa

Bluetooth version: V5.0 Bluetooth profile version: HFP V1.7, A2DP V1.3, AVRCP V1.6

Bluetooth transmitter frequency range: 2.4 GHz – 2.4835 GHz

Bluetooth transmitter power: < 10 dBm

Bluetooth transmitter modulation: GFSK,  $\pi/4$  DQPSK, 8DPSK

Maximum operation temperature: 45°C

## Bluetooth Troubleshooting

### How to avoid Bluetooth interference/interruptions:

Always have a clear line of sight between your Bluetooth device (speaker, headphones, etc.) and source device (Smartphone/tablet/PC, etc). Be aware of obstacles in front of your devices. Try to shutdown products that have Bluetooth, but not are not being used. They are often the reason for interference even though they are not being used. Do not stand too close to your Wi-Fi router since a Wi-Fi signal is stronger and in many cases will "overlap" the connection.

Be aware of walls around you. Concrete and brick walls will often interrupt the signal, as it cannot pass through such thick walls.

Bluetooth signals cannot travel through water, which includes the human body. Make sure with Wireless Headphones to keep your Source device and the receiver on the same side of your body. Open spaces such as parks can cause issues for your devices, as open air is "bad" for any Bluetooth signal if it cannot reflect from objects around you.

### Pairing issues with a Smartphone or Tablet:

First, try to restart the Bluetooth connection on your source device (Smartphone/tablet/PC) by switching Bluetooth off and on again with a short pause in between. "Forget" (remove) the previously paired connection (on your smartphone/tablet/PC) in your Bluetooth settings if you had once paired with our product. Try to restart the source device(Smartphone/tablet/PC) by powering it off and on again, and after restarting try to establish a Bluetooth connection to your product. If the above does not work, then try to restart your product (Portable speaker, Headphone) by turning it off and on again. Press and hold down the Bluetooth button on your device (Portable speaker, Headphones) to initiate pairing mode again. Go into the Bluetooth settings on your Smartphone/

tablet or PC to start the pairing process. You should now have a successful pairing with our device, but if you are still experiencing issues then contact us again.

### **Pairing issues with a Computer or PC:**

In most cases when a Computer/PC/Laptop has issues connecting to a Bluetooth device (Portable speaker, Headphones, Active speakers), it's caused by your Computer/PC/Laptop's Bluetooth driver (software). The driver (software) should support the following Bluetooth protocols, to be able to play music/sounds from your Computer/PC/Laptop: A2DP (Advanced Audio Distribution Profile) driver for your Computer/PC/Headphones to transfer music. AVRCP (Audio/Video Remote Control Profile) driver to send skip/forward/pause/play music to your device Always get the latest driver version available for your Computer/PC/Laptop

To download the correct driver (software), visit the manufacturer's website of your Computer/PC/Laptop. They usually have a "Support/Download" section where you can find the correct driver. Otherwise, contact their support. The standard drivers provided by Microsoft/Windows systems are often not correct, and will result in error messages (such as having to enter a PIN code), or pairing not working

### **What is Bluetooth technology?**

Bluetooth technology is a wireless technology that exchanges data (Music etc.) over short distances from a mobile device.

Bluetooth range depends on your surroundings (reflection from objects) and what chipset is being used (some can go 1 meter, 10 meters or 100 meters).

Our Bluetooth devices typically supports up to 10 meter distance from the source device.

### **Explaining the different Bluetooth profiles used in our devices:**

Many of our Bluetooth devices have a specification sheet like Bluetooth Profiles Supported: A2DP v1.5/AVRCP v1.6. These are the protocols that a specific Bluetooth speaker or Headphone device is compatible with. This might look too technical for some customers, but all you need to know is that Bluetooth

Speakers and Headphones they are the only ones with these profile that you need to be aware of:

**A2DP – A2DP** stands for 'Advanced Audio Distribution Profile' and is a Bluetooth protocol that allows mobile users to stream high quality (stereo or mono) audio wirelessly. If you want to listen to your music on a pair of Bluetooth headphones or speakers, both devices need to support this.

**AVRCP – AVRCP** stands for 'Audio/Video Remote Control Profile' and controls remote functions such as pause/start/skip/forward.

**HSP – HSP** stands for 'Headset Profile' and is a Bluetooth profile to enable a two-way wireless Headphone to be used with a Bluetooth smartphone. In our Headphones this is one of the most common Bluetooth profiles and supports simultaneous two-way (full-duplex) audio, but it does not support stereo audio.

**HFP - HFP** Stands for 'Hands Free Profile'. This profile provides the same abilities as HSP does, but adds abilities such as redial last number called, voice dialing and call waiting.

**Note for HSP and HFP:**

You can also use it with devices other than phones, like your Computer/PC with a Bluetooth Headphone that could be used with a Bluetooth-enabled PC and VoIP software to place an Internet phone call (NOTE: some PC software requires different drivers for specific purposes like SKYPE - Always refer to the manufacturer of the PC/Laptop for help with setting this up).

## About this item

- The JBL Live 660NC wireless headphones feature 40mm drivers and a sound signature that can be found in the most famous venues all around the world.
- Keep the noise away and stay focused on the music with Adaptive Noise Cancelling of these Bluetooth headphones. The Ambient Aware technology allows you to safely walk busy streets by increasing ambient sounds, while with TalkThru music is lowered and speech is amplified so you can easily chat keeping your headphones on.
- Get help from your preferred voice assistant using your voice or with a tap on the earcup. Activate Noise Cancelling or Ambient Aware, check the battery life or power off your JBL Live 660NC simply with your voice. Use the all-new JBL App to easily set your preferred voice assistants.
- Stay in touch with your world by managing calls with the buttons on the ear-cup. The mic technology allows for perfect stereo calls.
- Rock on for up to 50 hours (or up to 40 hours with ANC and BT on). Then, stop for a quick 10-minute charge to get extra 4-hour fun.
- Android 6.0 or higher is required for full access to Alexa features when using this device

**Note:** Products with electrical plugs are designed for use in the US. Outlets and voltage differ internationally and this product may require an adapter or converter for use in your destination. Please check compatibility before purchasing.

### Warning

This content is compiled from multiple sources and is provided for reference purposes only. It may not be complete or fully applicable to all situations. If you are unable to resolve your issue, please contact the product manufacturer or an authorized service provider for official support.

