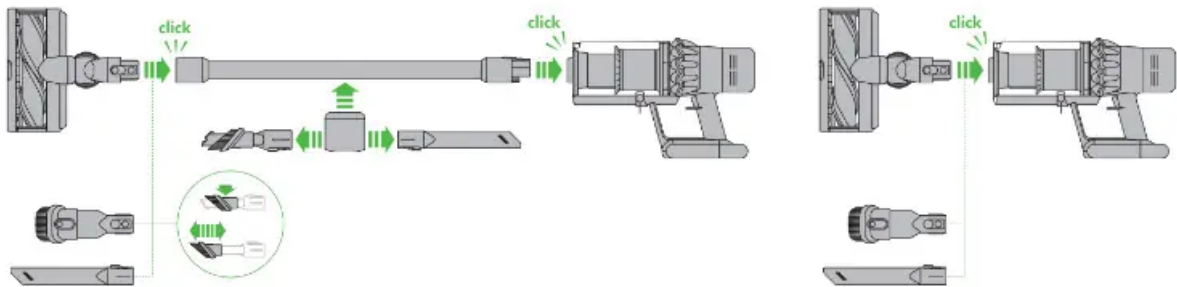




Assembly

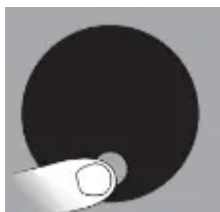


Quick start

1. Quick start

- Power modes

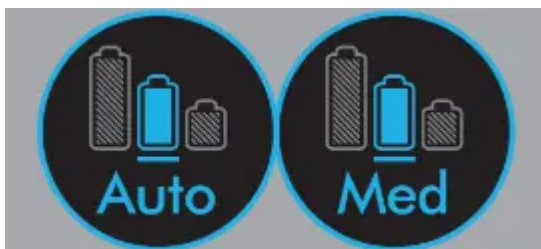
Your appliance has three power modes for different tasks. Change cleaning modes quickly using a single button.



- Maximum run time, for longer cleans.



- The optimum balance. Attach your High torque cleaner head to activate Auto mode, which automatically adapts power between carpets and hard floors.



- Intensive cleaning for ground-in dirt.



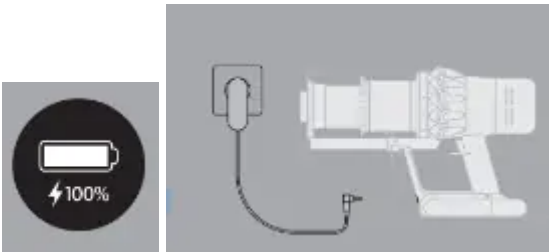
2. Scan with your phone camera or QR reader to



- Activate your guarantee: 2 year free parts (excluding consumables such as battery and filters where there is no defect) and labour.
- Watch helpful video guides: Get started quickly.
- Access support: From experts at Dyson.

3. Charging

Your appliance will need to be fully charged before first use.



Display

1. Selection button

You can control the settings on your appliance using the selection button.



2. Language selection



Press and hold the selection button for 5 to 10 seconds to view the language list. Press the selection button to scroll through the languages. A short (between 2 and 4 seconds) hold press on the selection button selects a language.



If the wrong language is selected then a short hold press on the selection button when the cross is displayed will return you to the language list.



To confirm the language press the selection button to scroll to the tick, then a short hold press on the selection button will confirm your selection.

3. Low battery



The screen will alert you when your battery is getting low.



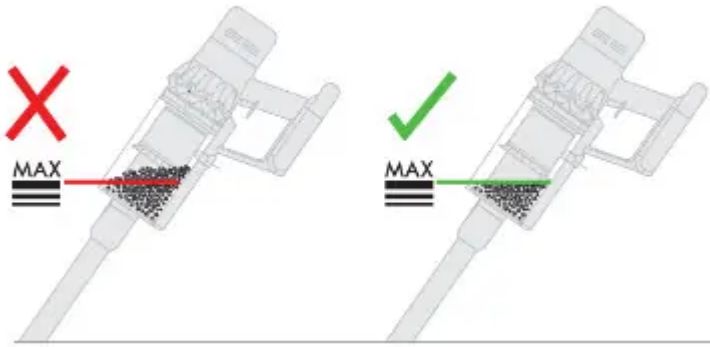
A final alert is shown when your battery is empty and needs to be charged.

4. Alerts



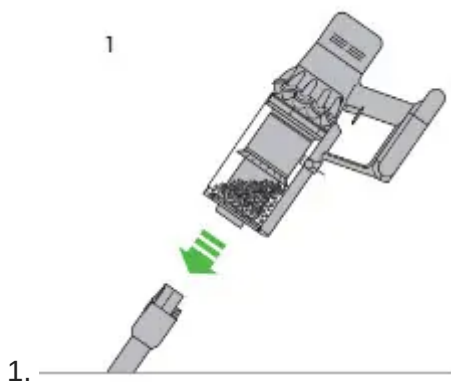
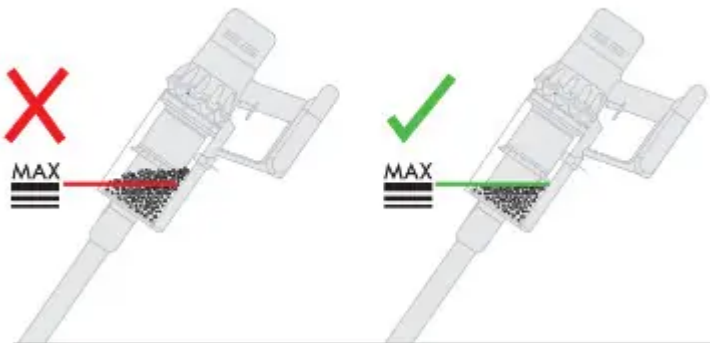
The screen will alert you when your appliance needs your attention. Follow the instructions on screen to maintain performance.

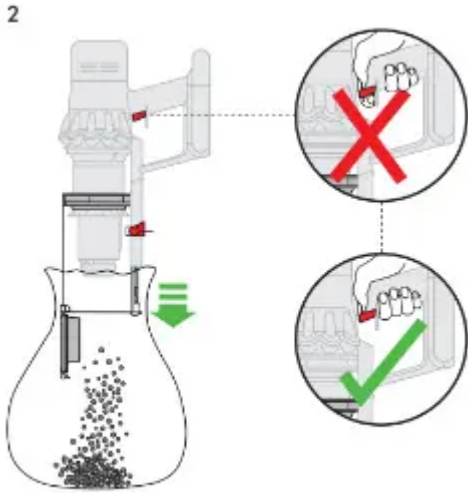
5. Battery health



Continued or regular use of Eco or Auto/Med mode helps to maximise cleaning time and prevent overheating, helping to preserve battery durability and life.

Emptying the clear bin





2.

Be careful not to pull the 'ON' trigger while the clear bin is open for emptying.



3.

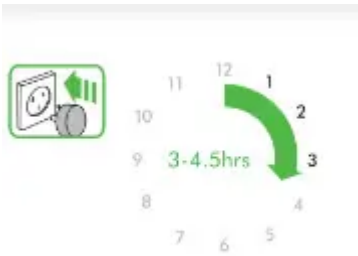


4.

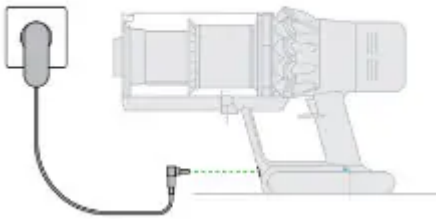
Close the clear bin by pushing the bin base upwards until the clear bin and bin base click into place.



Charging



1.



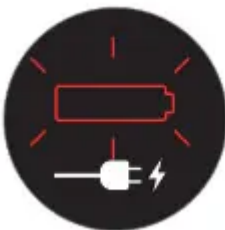
2.

Connect to the charger either directly or in the docking station. The blue LEDs – one on each side of the battery – will flash on and off during charging. When the battery is charged, both LEDs will light for 5 seconds, then go out.



3.

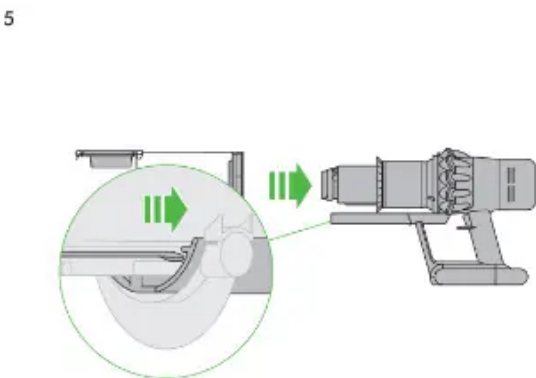
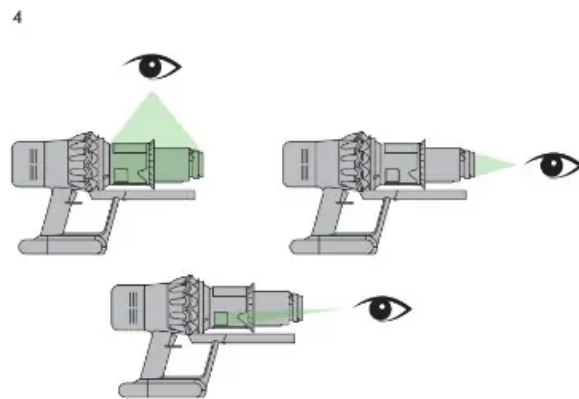
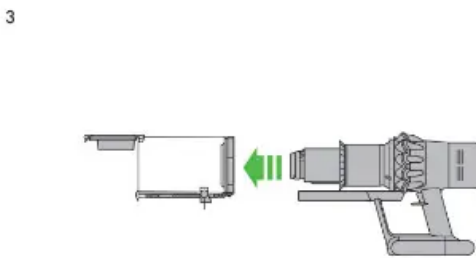
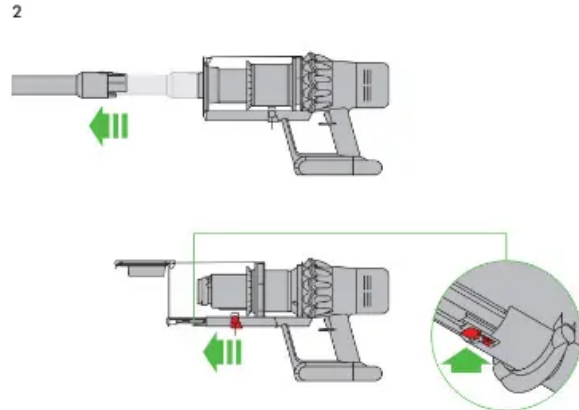
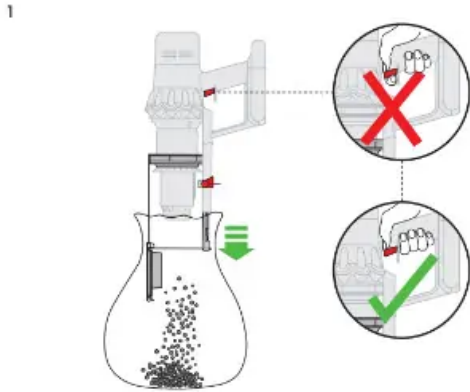
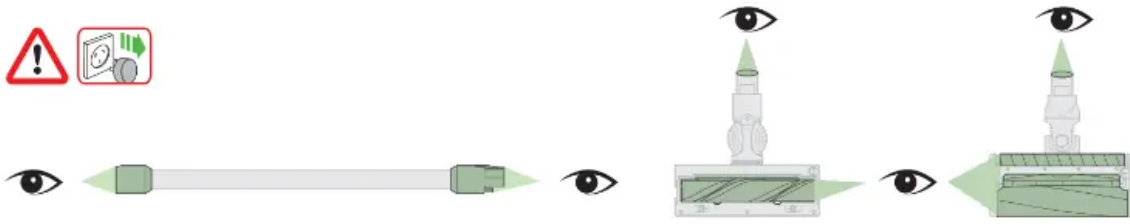
Battery is charged when display shows battery at 100%.



4.

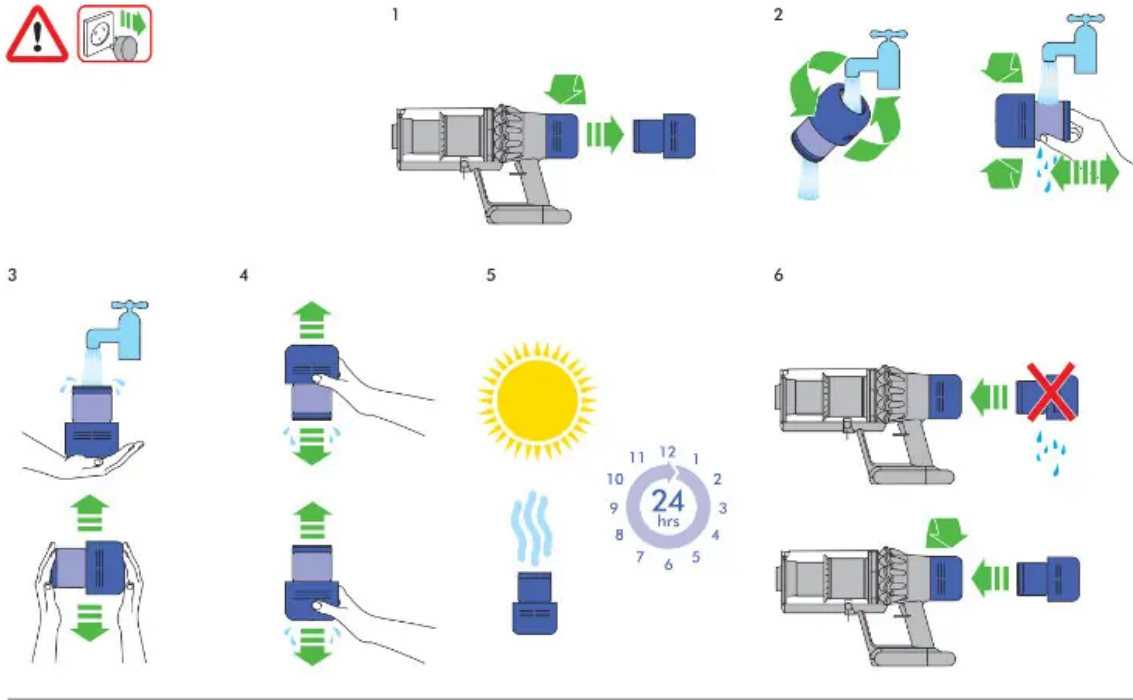
Battery is empty and needs charging.

Looking for blockages

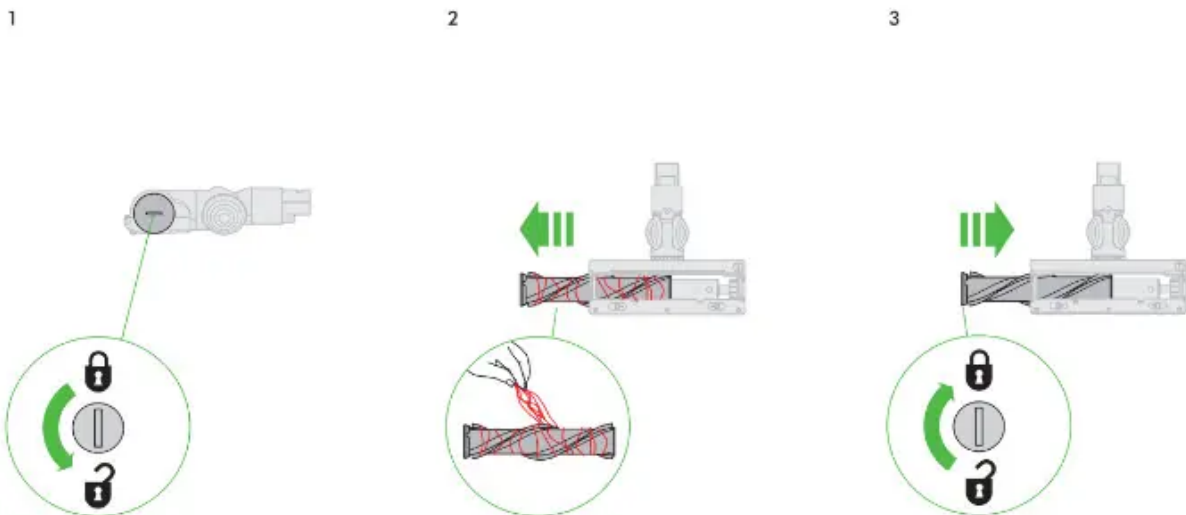


Close the clear bin by pushing the bin base upwards until the clear bin and bin base click into place.

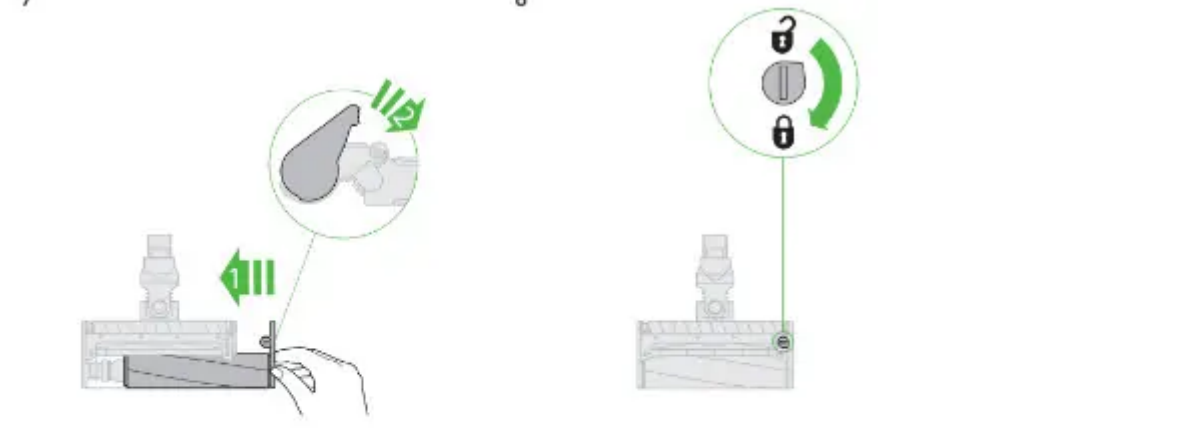
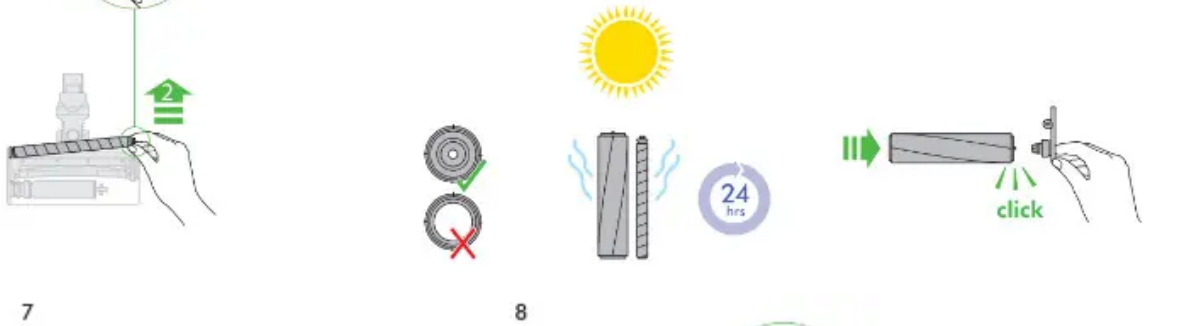
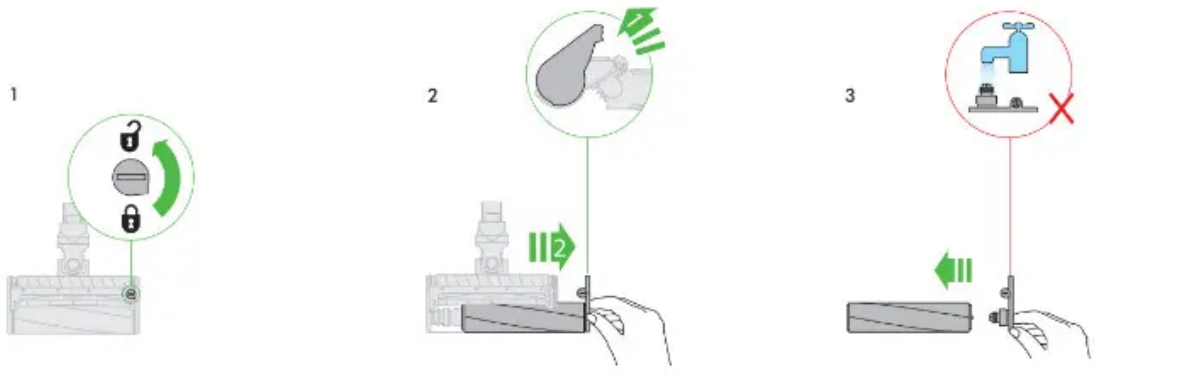
Cleaning the filter



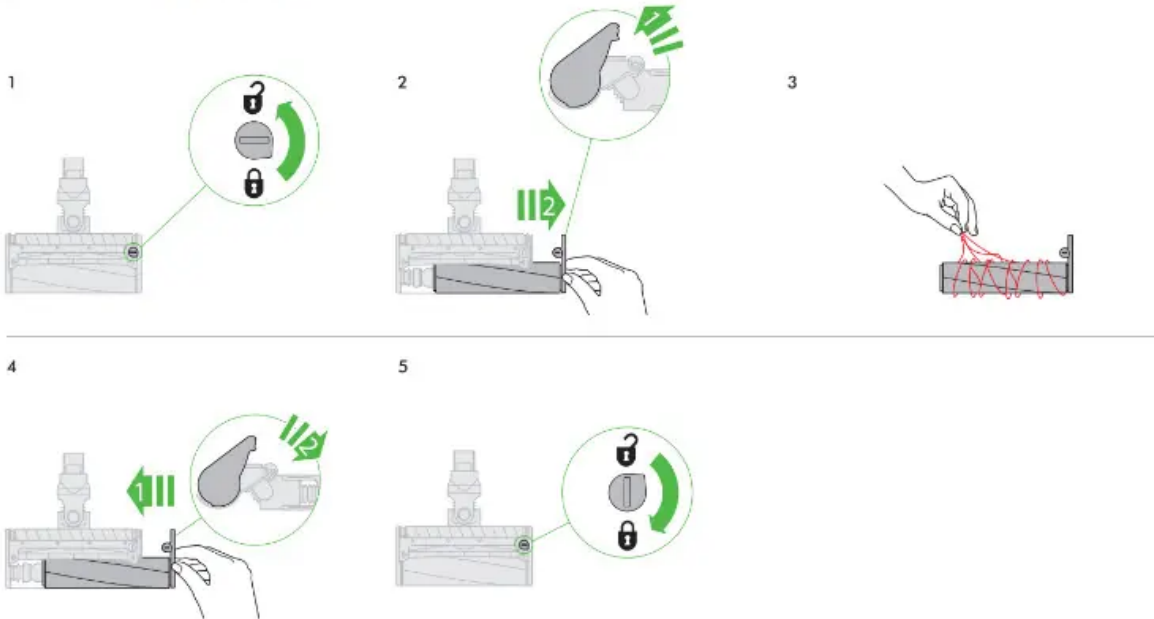
High torque cleaner head maintenance



Soft roller cleaner head maintenance – washing the brush bars



Soft roller cleaner head maintenance – clearing blockages



Additional information

Please read the 'Important Safety Instructions' in this Dyson Operating Manual before proceeding.

1. Docking station installation

- Unpack the docking station, charger and installation leaflet.
- Select the location for the docking station and ensure that there is no pipework (gas, water or air), electrical cables, wires or ductwork directly behind the mounting location.
- Follow the instructions on the installation leaflet.
- Click the attachments into place.
- Place the appliance in the docking station.
- Plug the charger into the mains electricity supply. Switch on (if necessary) to charge the battery.
- Your appliance will need to be fully charged before first use.

The docking station must be mounted in accordance with regulations and applicable codes/standards (state and local laws may apply).

Dyson recommends the use of protective clothing, eyewear and materials when installing the docking station.

2. Vacuuming

- Remove the appliance from the docking station.
- Check that the underside of the cleaner head or tool is clean and free from foreign objects that may cause damage.

Before vacuuming your flooring, rugs and carpets, check the manufacturer's recommended cleaning instructions.

The brush bar on the appliance can damage certain carpet types and floors. Some carpets will fuzz if a rotating brush bar is used when vacuuming. If this happens, we recommend vacuuming without the motorised floor tool and consulting with your flooring manufacturer.

3. High torque cleaner head – suction control slider

Your High torque cleaner head has a slider control to adjust the suction of the cleaner head. To select the suction required, move the suction control slider on top of the cleaner head.

Maximum suction for ground-in dust and debris (+)

- For vacuuming durable floor coverings, hard floors and heavily soiled carpets and rugs. Suction for dust and debris (▲)
- For vacuuming of lightly soiled carpets, rugs and hard flooring.
- For vacuuming of large debris such as peanuts or rice. Suction for deep pile carpets and delicate flooring (-)
- For vacuuming deep pile carpets or rugs and any flooring on which you may experience greater resistance.
- For vacuuming of lightly soiled floors, including delicate flooring such as vinyl, parquet and lino.

4. Emptying the clear bin

- Empty as soon as the dirt reaches the level of the MAX mark – do not overfill.
- Be careful not to pull the 'ON' trigger while the clear bin is open for emptying.
- Remove the wand by pressing the red wand release button and pulling away from the bin.
- To release the dirt:
 - Hold the appliance with the bin in a downwards position.
 - Firmly push the red bin release button.
 - The bin will slide down, cleaning the shroud as it goes.
 - The bin base will then open.
 - The bin base will not open if the red button is not pushed down fully.

To minimise dust/allergen contact when emptying, encase the clear bin tightly in a dust proof bag and empty. Remove the clear bin carefully from the bag. Seal the bag tightly, dispose as normal.

5. Cleaning the clear bin (optional)

If it is necessary to clean the clear bin:

- Follow the instructions in the 'Emptying the clear bin' section.
- Press the red button located on the bin runner to release the bin and slide the bin off the runner.
- Clean the clear bin with a damp cloth only.
- Ensure that the clear bin and seals are completely dry before replacing.
- To refit the clear bin:
 - Insert the spine on to the bin runner. Close the clear bin by pushing the bin base upwards until the clear bin and bin base click into place.

The clear bin is not dishwasher safe and the use of detergents, polishes or air fresheners to clean the clear bin is not recommended as this may damage your appliance.

6. Filter and blockage indicators

The display of your appliance will alert you when simple maintenance steps are needed.

- The filter indicator will show when the filter unit is not fitted correctly. Follow the instructions on how to refit the filter unit in the 'Washing the filter unit' section.
- The filter indicator will show when the filter unit needs washing. Follow the instructions on how to wash the filter unit in the 'Washing the filter unit' section.
- The blockage indicator will show if there is a blockage. Follow the instructions on how to clear blockages in the 'Looking for blockages' section.

7. Washable parts

Your appliance has washable parts, which require regular cleaning. Follow the instructions below.

- Do not put any part of your appliance in a dishwasher, washing machine, tumble dryer, oven, microwave or near a naked flame.,

8. Washing the filter unit

Wash the filter unit at least once every month, or whenever the filter maintenance indicator lights.

Check and wash the filter unit, according to the instructions, to maintain performance.

- Remove the filter unit by twisting it anticlockwise. Gently pull away from the appliance.
 - Gently tap the filter unit to remove any excess dust and debris before washing it.
 - Wash the filter unit in cold water only: do not use detergent, or wash it in a dishwasher or washing machine.
 - Wash the pleated paper element of the filter unit first; hold the filter unit under a cold water tap with the foam element downwards and run cold water over the pleated paper.
 - Continue washing until the water runs clear.
 - Wash the foam element of the filter unit next; hold the filter unit under a cold water tap with the foam element downwards so that dirty water does not contaminate the pleated paper element. Run cold water over the inside and outside of the foam element and squeeze the foam gently to expel the dirt.
 - Continue washing until the water runs clear.
 - Wash the outside of the filter unit. Then fill the unit with cold water, place your hands over the open ends and shake gently.
 - Repeat washing the elements and outside of the filter unit until the water runs clear.
 - Gently shake the filter unit to remove any excess water and leave to drain with the foam element end facing up.
 - Leave the filter unit to dry completely in a dry environment with good airflow, for a minimum of 24 hours.
 - Check that the filter unit is completely dry.
 - To refit, return the filter unit to the main body and twist clockwise until it clicks into place. The filter unit may require more frequent washing if vacuuming fine dust or if use is mainly in Boost mode.
- Do not put any part of your appliance in a dishwasher, washing machine, tumble dryer, oven, microwave or near a naked flame.

9. Washing the soft roller cleaner head brush bars

The soft roller cleaner head of your appliance has two washable brush bars. Check and wash them regularly, according to the following instructions, to maintain performance:

- Refer to the 'Cleaner head maintenance' illustrations above.
- When removing or replacing a motorised brush bar, be careful not to pull the 'ON' trigger until the cleaner head has been reassembled.

To remove, wash and replace the brush bars:

- Turn the cleaner head upside down so that the underside of the cleaner head is facing you. Use a coin to turn the end cap a quarter anticlockwise until it clicks into the unlocked position. Rotate the end cap to the open position. Slide the main brush bar out of the cleaner head. Remove the end cap from the main brush bar. Do not wash the end cap.
- Gently slide the rear brush bar out of the cleaner head.
- Hold the brush bars under running water and gently rub to remove any lint or dirt.
- Stand the brush bars upright as shown. Leave to dry completely for a minimum of 24 hours.

Before replacing, check that the brush bars are completely dry.

- Slide the rear brush bar back into the cleaner head.
- Slide the main brush bar back into the cleaner head.
- Reattach the end cap to the main brush bar.
- The end cap should be in the open position as shown. Once in place, rotate the end cap back into the closed position.
- Close the fastener by turning it a quarter clockwise. Ensure that the fastener is fully turned and the brush bars are secure.

10. High torque cleaner head

The brush bar of a motorised cleaner head is not washable.

11. Quick-release mini motorhead tool

The brush bar of a motorised cleaner head is not washable.

12. Blockages – automatic cut-out

- This appliance is fitted with an automatic cut-out.
- If any part becomes blocked, the appliance may automatically cut out.
- This will happen after the motor pulses a number of times (i.e. switches on and off in quick succession) and the blockage indicator will light.
- Leave to cool down before looking for blockages.
- Be careful not to pull the 'ON' trigger while looking for blockages. Operating the appliance while it is partially dismantled could result in personal injury.
- Clear any blockages before restarting (see 'Looking for blockages' section).
- Refit all parts securely before using.
- Clearing blockages is not covered by your Dyson guarantee.

13. Looking for blockages

The motor will pulse and the blockage indicator will show when there is a blockage. Please follow the instructions below to locate the blockage:

- Be careful not to pull the 'ON' trigger while looking for blockages. Operating the appliance while it is partially dismantled could result in personal injury.
- Beware of sharp objects when checking for blockages.
- To check for blockages in the main body of the appliance, remove the clear bin following the instructions in the 'Emptying the clear bin' section and remove the blockage.
- If you cannot clear an obstruction from the cleaner head, you may need to remove the brush bar. Use a coin to unlock the fastener, slide the brush bar out of the cleaner head and remove the obstruction. Replace the brush bar and secure it by tightening the fastener. Ensure it is fixed firmly before operating the appliance.
- This product has carbon fibre brushes. Take care if coming into contact with them, as they may cause minor skin irritation. Wash your hands after handling the brushes.
- Refit all parts securely before using.
- Clearing blockages is not covered by your Dyson guarantee.

15. Charging and storing

- This appliance will switch 'OFF' if the battery temperature is below 10°C (50°F). This is designed to protect the motor and battery. Do not charge the appliance and then move it to an area with a temperature below 10°C (50°F) for storage purposes.
- To help prolong battery life, avoid recharging immediately after a full discharge. Allow to cool for a few minutes.
- Avoid using the appliance with the battery flush to a surface. This will help it run cooler and prolong battery run time and life. Battery safety instructions
- If the battery needs replacing, please contact the Dyson Helpline.
- Use only the Dyson charger Part Number 217160 for charging this Dyson appliance.

CAUTION

The battery used in this device may present a risk of fire or chemical burn if mistreated. Do not short contacts, heat above 60°C (140°F), or incinerate. Keep away from children. Do not disassemble and do not dispose of in fire.

16. Disposal information

Dyson products are made from high grade recyclable materials. Please dispose of this product responsibly and recycle where possible.

When your Dyson appliance reaches the end of its life, we can assist with its safe disposal. You can send your old Dyson appliance back to us (at our cost) and we will organise for it to be recycled.*

*Please note that not all parts are recyclable. Recycling of parts is subject to the capabilities of 3rd party suppliers. Available in Australia only.

Simply:

1. Box up your old Dyson appliance.
2. Take the package to your local post office and send to the address below:

Dyson We Recycle
Reply Paid 83215
Dyson Service Centre
8–10 Mangrove Lane
Taren Point, NSW 2229

- The battery should be removed from the product before disposal.
- Recycle or dispose of the battery in accordance with local ordinances or regulations.
- Dispose of the exhausted filter unit in accordance with local ordinances or regulations.

17. Dyson customer care

Thank you for choosing to buy a Dyson appliance

After registering your 2 year Dyson guarantee, your Dyson appliance will be covered for parts and labour for 2 years from the date of purchase, subject to the terms of the guarantee. If you have any questions about your Dyson appliance, call the Dyson Helpline with your serial number and details of where and when you bought the appliance. Most questions can be solved over the phone by one of our trained Dyson Helpline staff.

18. Australian Consumer law

In addition to your rights under the Dyson guarantee, we also provide the following statement as required by the Australian Consumer Law: In Australia, your Dyson appliance comes with statutory guarantees that cannot be excluded under the Australian Consumer Law. You are entitled to a replacement or refund for a major failure and for compensation for any other reasonably foreseeable loss or damage. You are also entitled to have your Dyson appliance repaired or replaced if it fails to be of acceptable quality and the failure does not amount to a major failure.

19. New Zealand Consumer law

Under the New Zealand Consumer Guarantees Act 1993, if the product is not of acceptable quality but that defect is not substantial, Dyson may choose whether to repair or replace the product. If a repair will be difficult, Dyson may instead provide you with a refund. If a product's defect is substantial or cannot be fixed, you can ask for either a refund, replacement product, or compensation for any reduction in that product's value. You are also entitled to compensation for any other reasonably foreseeable loss caused by that substantial defect.

Warning

This content is compiled from multiple sources and is provided for reference purposes only. It may not be complete or fully applicable to all situations. If you are unable to resolve your issue, please contact the product manufacturer or an authorized service provider for official support.

