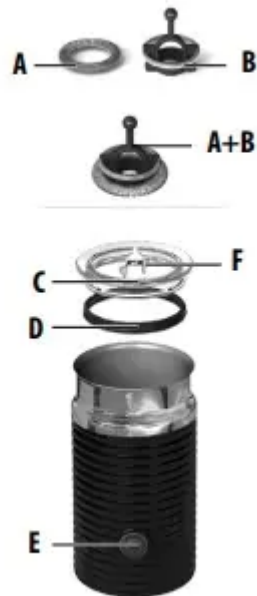


# USER MANUAL Nespresso Citiz & Milk Espresso Machine

## OVERVIEW



**A** Frothing spring (for milk froth)

**B** Mixer (for hot milk)








**C** Lid

**D** Seal

**E** Start/stop button

**F** Storage area for frothing spring

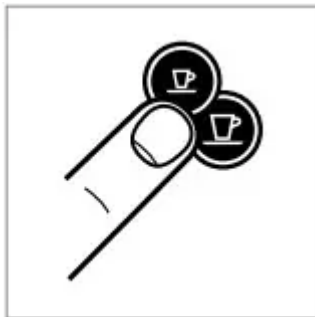
## SPECIFICATIONS

EN267			
	 21.8 cm  27.7 cm  37.2 cm		
	220-240 V, 50-60 Hz, 1710 W	<b>P</b>	Max./Μέγ. 19 Bar
	4.0 Kg		1 L/1 λ

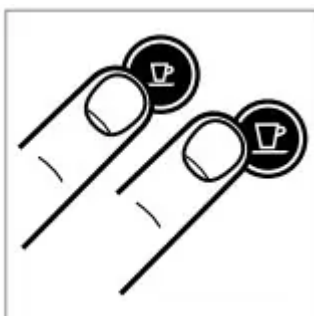
## ENERGY SAVING MODE

This machine is equipped with an energy saving feature. The machine will automatically enter power off mode after 9 minutes.

- To turn the machine on either press the Espresso or Lungo button.



- To turn the machine off before automatic Power Off mode, press both the Espresso and Lungo buttons simultaneously.



**To change this setting:**

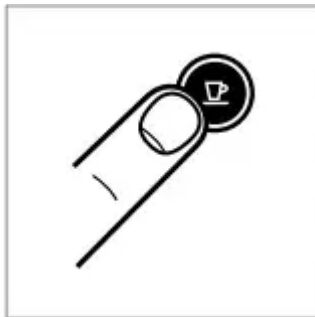
1. With the machine OFF, press and hold the Espresso button for 3 seconds.



2. The Espresso button will blink to indicate the current setting



3. To change this setting press the Espresso button: One time for power off mode after 9 minutes. One more time for power off mode after 30 minutes



4. To exit the energy saving mode press the Lungo button for 3 seconds.



**FIRST USE OR AFTER A LONG PERIOD OF NON-USE**

CAUTION: first read the safety precautions to avoid risks of fatal electrical shocks and fire.

1. Rinse the water tank before filling with fresh drinking water



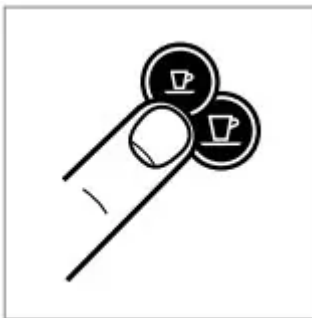
2. Place a container (min. 1 L) under the coffee outlet.



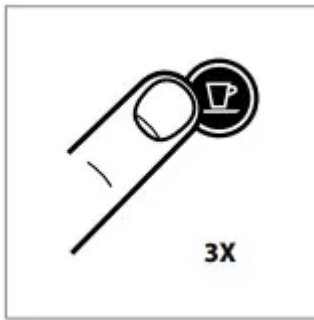
3. Plug into mains



4. Press the Espresso or Lungo button to activate the machine



5. Press the Lungo button to rinse the machine. Repeat 3 times.



6. Clean jug before first use and after every use according to instructions

## COFFEE PREPARATION

1. Rinse then fill the water tank with fresh drinking water.



2. Press the Espresso or Lungo button to activate the machine.



3. Lift the lever completely and insert the capsule



4. Close the lever and place a cup under the coffee outlet.



5. Press the Espresso (40 ml) or the Lungo (110 ml) button to start. Preparation will stop automatically. To stop the coffee flow or top up your coffee, press again



6. Remove the cup. Lift and close the lever to eject the capsule into the used capsule container.



## CLEANING THE AEROCCINO

1. Remove the jug from the base, remove seal from lid, remove the whisk, remove the spring from the whisk.



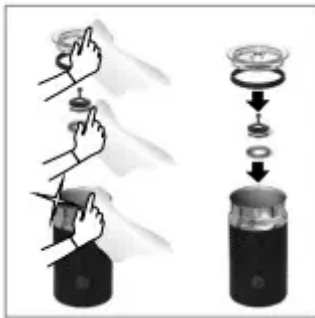
2. Wash inner jug, seal, lid, whisk and spring with detergent and rinse with warm/hot water



3. Do not put the jug in the dishwasher and do not immerse into water for cleaning purposes, do not water the bottom part of the Aerooccino which contains the electrical plug, but clean the interior of the Aerooccino with detergent and rinse with warm/hot water. Use non-abrasive materials



4. Dry all Aerooccino parts with a fresh and clean towel, cloth or paper and reassemble all parts



**CAUTION:**

- In case base needs to be cleaned unplug it first and use only a damp cloth. Make sure the connector is dry before operating. Do not immerse the base in water neither put in the dishwasher.
- If the bottom part of the jug is wet, dry it before putting it back in contact with the plug.
- Only use non-abrasive cleaning materials. Do not use abrasives, sharp objects, brushes: risk of scratches and harm to the jug coating.

## DESCALING

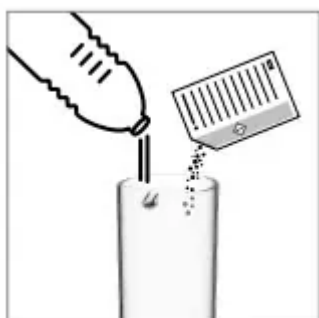
1. Remove the capsule and close the lever



2. Empty the drip tray and used capsule container



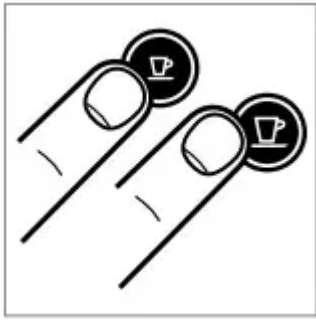
3. Fill the water tank with 0.5 L of fresh drinking water and add 1 Nespresso descaling liquid sachet.



4. Place a container (min. volume 1 L) under the coffee outlet.



5. To enter the descaling mode, while the machine is turned on, press both the Espresso and Lungo buttons for 3 seconds.



6. Press the Lungo button and wait until the water tank is empty.



7. Refill the water tank with the used descaling solution collected in the container and repeat step 4 and 6.

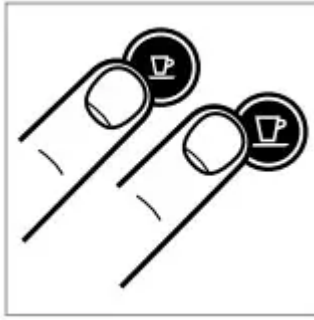


8. Empty and rinse the water tank. Fill with fresh drinking water.



9. When ready, repeat step 4 and 6 to now rinse the machine.

10. To exit the descaling mode, press both the Espresso and Lungo buttons for 3 seconds



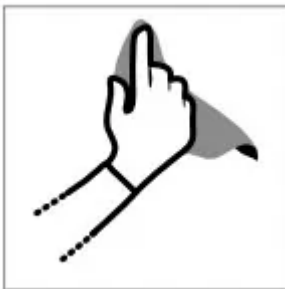
11. The machine is now ready for use.

**CAUTION:** the descaling solution can be harmful. Avoid contact with eyes, skin and surfaces. Never use any product other than the Nespresso descaling kit available at the Nespresso Club to avoid damage to your machine. The following table will indicate the descaling frequency required for the optimum performance of your machine, based on water hardness. For any additional questions you may have regarding descaling, please contact your Nespresso Club.

## CLEANING

**WARNING** Risk of fatal electrical shock and fire

- Never immerse the appliance or part of it in water.
- Be sure to unplug the machine before cleaning.
- Do not use any strong cleaning agent or solvent cleaner.
- Do not use sharp objects, brushes or sharp abrasives.
- Do not place in a dishwasher.



Clean the coffee outlet regularly with a soft damp cloth.



Maintenance unit can be removed in separate pieces for easy cleaning.

## TROUBLESHOOTING

No light indicator.

- Check the mains, plug, voltage, and fuse. In case of problems, call the Nespresso Club.

No coffee, no water.

- First use: fill water tank with warm water (max. 55° C) and run through machine according to instructions on page 10.
- Water tank is empty. Fill water tank.
- Descale if necessary; see Descaling section.

Coffee comes out very slowly.

- Flow speed depends on the coffee variety.
- Descale if necessary; see Descaling section

Coffee is not hot enough.

- Preheat cup.
- Descale if necessary.

Capsule area is leaking (water in capsule container).

- Position capsule correctly. If leakages occur, call the Nespresso Club.

Irregular blinking.

- Send the appliance for repair - Contact the Nespresso Club.

No coffee, just water runs out (despite inserted capsule).

- In case of problems, call the Nespresso Club.

The jug does not start.

- Be sure to position the jug correctly on a clean base. Be sure to attach the whisk to the jug correctly.

Quality of milk froth not up to standard.

- Be sure to use whole or semi-skimmed milk at refrigerated temperature (about 4-6° C).
- Be sure to use the appropriate whisk and the jug is clean
- It is highly recommended to not use special enriched milks, powdered reconstituted milks nor flavoured milks.

Red Button blinking.

- The appliance is too hot. Rinse it under cool water
- Whisk is missing

- Not enough milk. Fill milk frother up to one of the two «max» level.

#### Milk Overflows.

- Be sure to use the appropriate whisk and check the corresponding indicator level.

#### **Warning**

This content is compiled from multiple sources and is provided for reference purposes only. It may not be complete or fully applicable to all situations. If you are unable to resolve your issue, please contact the product manufacturer or an authorized service provider for official support.