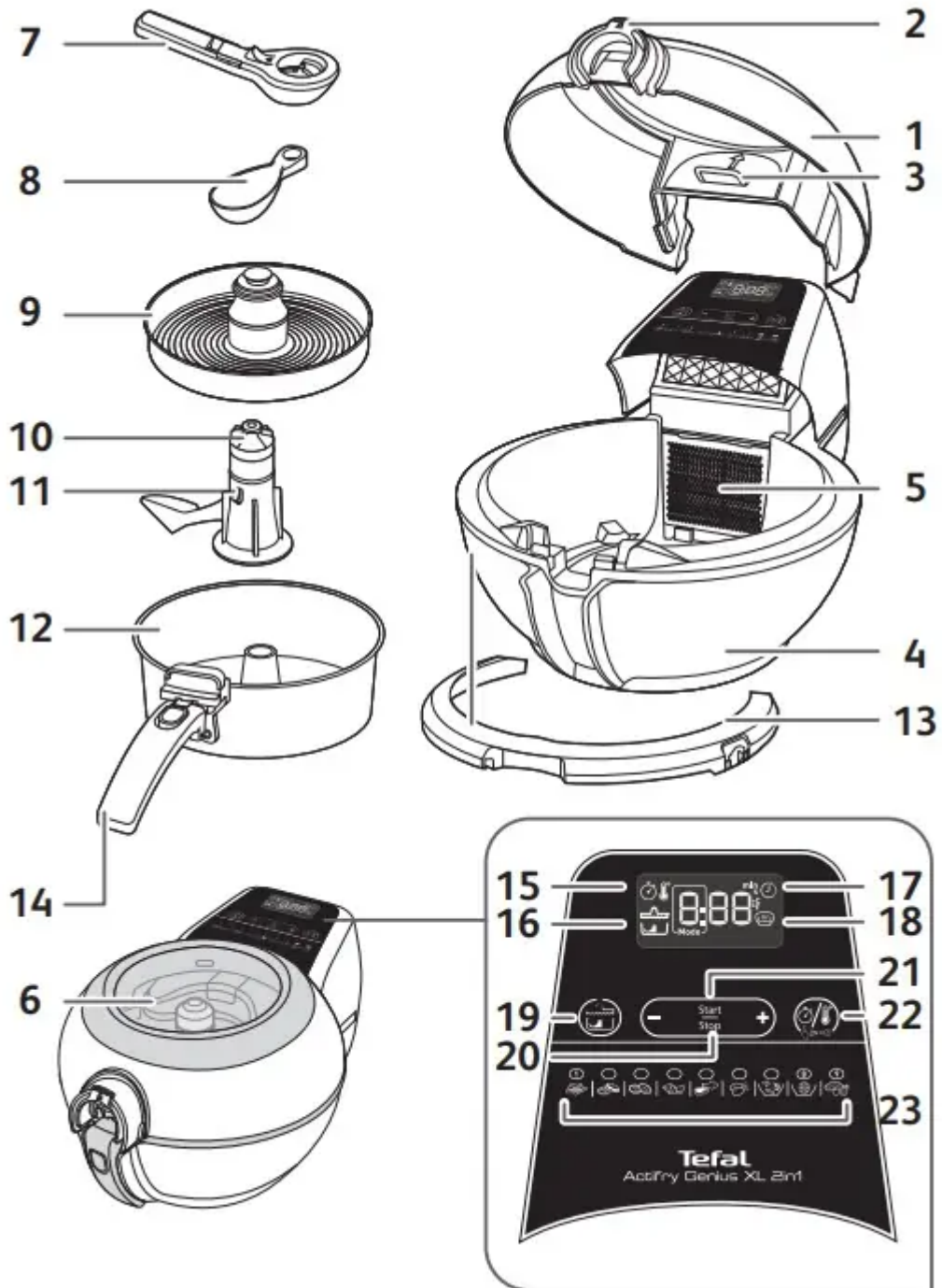
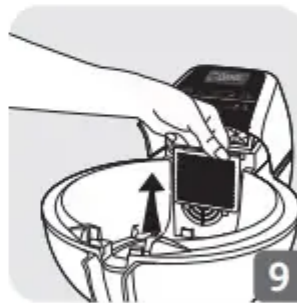
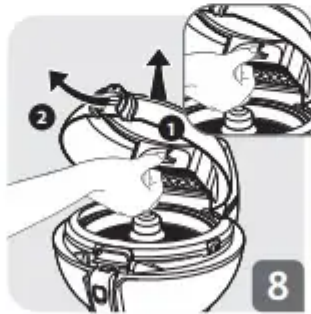
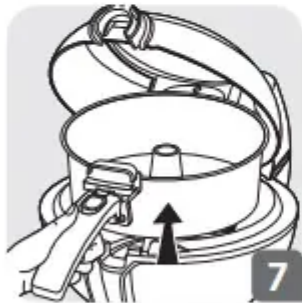
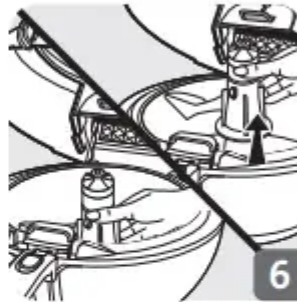


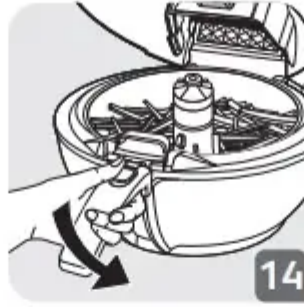
## DESCRIPTION

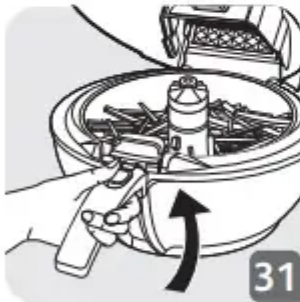
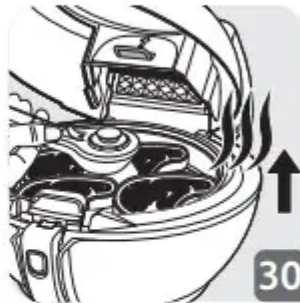


1. Lid
2. Lid opening button
3. Lid latch
4. Base
5. Removable filter

6. Viewing window
7. Cooking tray handle (removable)
8. Measuring spoon (20 ml)
9. 2in1 cooking tray with "MAX level"
10. Removable mixing paddle
11. Paddle release button
12. Removable cooking pan
13. Removable turn-over ring
14. Cooking pan handle
15. Cooking time
16. Cooking pan or tray in use indicator
17. Delayed start display
18. Keep warm display
19. Button for activating the 2in1 function
20. + and – button for adjusting cooking time
21. Start/Stop cooking
22. Manual mode
23. Cooking modes







## INSTRUCTIONS FOR USE

### Before using for the first time

- Remove all the stickers and any packaging.
- Open the lid by pressing on the lid opening button - fig.1.
- Remove the measuring spoon.
- Remove all polystyrene packing which you can then throw away - fig. 2.
- To remove the turn-over ring, pull the clips outwards, then lift it off - fig 3.

- Remove the tray using the cooking tray handle - fig. 4.
- Lift the pan handle to a horizontal position until you hear a “CLICK” as it locks - fig.5.
- Remove the paddle by pushing the release button - fig.6.
- Take out the cooking pan - fig.7.
- Push up the latch to remove the lid - fig. 8
- Remove the detachable filter - fig.9.
- All the removable parts are dishwasher safe, except the tray handle (7) - fig.10 or can be cleaned using a non abrasive sponge and some washing up liquid.
- Clean the body of the appliance and the handle with a damp sponge and washing up liquid - fig.11.
- Dry carefully before putting everything back in place.
- Reposition the paddle until you hear the «CLICK» - fig.12.
- To replace the turn-over ring, place it at the edge of the pan, centre it on the pan and press down until you hear a “CLICK”.

**NOTE:**

- Never immerse the base unit in water or any other liquid.
- On first use, to obtain the best results from your new product, we advise you to prepare a recipe that cooks for 30 minutes or more

## **COOKING**

When you are not using it, the appliance will automatically switch itself off after 10 minutes.

### **Some helpful advice**

- When using the appliance for the first time you may notice a harmless smell. This smell, which will not affect the appliance in any way, will quickly disappear.
- So as not to damage your appliance make sure you stick to the quantities of ingredients and liquid given in the instruction booklet and recipe book.
- Never overload the cooking pan or the tray and do not exceed the recommended quantities.
- Never exceed the height indicated by the maximum level marker on the tray.
- This appliance is not suitable for recipes with a high-liquid content (eg. soups, cook-in sauces...).
- Never leave your ActiFry spoon or the tray handle in the appliance whilst it is on.
- Never place the tray in the appliance without the pan.
- Never put the paddle in without the pan.

- Place the tray in the appliance when the reminder beep sounds and not at the beginning of cooking (except if the cooking time in the pan and the tray are the same).
- Never leave the appliance unattended whilst in operation.
- Never operate your appliance when empty.
- When using the cooking pan on its own, never place the tray in the appliance.
- Never use the removable turn-over ring on the tray, either when using it alone or in 2in1 mode. Only use the removable turn-over ring on the cooking pan - fig. 33-35.
- Place the removable turn-over ring on the cooking pan to cook large quantities.




## USING THE TRAY ON ITS OWN

### Get your food ready

- Open the lid – fig.1.
- Remove the measuring spoon and removable turn-over ring from the cooking pan.
- Remove the tray – fig.4.
- Place your food on the tray making sure you always keep to the quantities recommended in the cooking tables and/or the recipe book (please see “Cooking table for tray quantities page 17). Never exceed the “MAX” level marker shown on the centre of the tray – fig.23.
- Put the tray back in the appliance using the tray handle - fig. 24.
- Close the lid - fig. 25.

When using the tray on its own, do not put food into the cooking pan.

### Start the cooking

- Plug the appliance into an electrical socket outlet.
- The appliance will make a beep sound.
- Press the - button and the  flashes and the mode flashes '-'. Press the  key and the icon  appears on the screen.
- To select the cooking mode, press the + button until the required mode 2, 3, 4, 5, 6, 9, or M for manual mode is displayed.
- Press Start/Stop key.
- You can adjust the cooking time at any time by pressing +/- button
- The minute countdown starts. The countdown will only be displayed in seconds where there is less than a minute left.

Opening the lid stops the cooking. You can resume cooking by closing the lid and pressing on the start button.

Once the lid has been open for 3 minutes the appliance will go into stand-by mode.

## Remove your food

- When the cooking is finished, the timer will sound and the screen will start flashing and displaying 0 min. The appliance automatically stops cooking your food.
- Open the lid - fig.29.
- Remove the tray using the tray handle and take your food out - fig 30. Be careful, the tray is very hot after cooking. Always use the tray handle supplied with your appliance to remove it.
- Serve your food.

## Cooking table for the tray ONLY

	Type	Quantity for tray	Actifry spoons of oil	Cooking mode	Cooking time for tray (mins)
Chicken nuggets	Fresh or Frozen	500 g	None	2	13 - 15
	Fresh or Frozen	750 g	None	2	15 - 17
Chicken drumsticks	Fresh	4 to 6 pieces	None	6	20 - 22
Chicken Wings	Frozen	10 pieces	None	6	22
Chicken breast (boneless)	Fresh	6 pieces	None	6	18 - 20
	Fresh	9 pieces	None	6	22 - 24
Meatballs	Frozen	500 g	1	5	12 - 15
	Frozen	750 g	1	5	15 - 17
Steak	Fresh	4 pieces	1*	5	8**
	Frozen	4 - 6 pieces	1 1/2*	5	8 - 10**

\* Brush steaks on both sides with oil.

\*\* Cooking time for rare steak. Add additional cooking time for medium and well done steaks.






## USING THE 2IN1 PAN + TRAY

### Get your food ready

- Open the lid – fig.1.
- Remove the tray and the removable turn-over ring from the cooking pan – fig.4.
- Lift the handle up and remove the pan from the appliance.

- Place your food in the pan making sure you always keep to the quantities recommended in the cooking tables and/or the recipe book. Never exceed the MAX level indicated in the paddle.
- Depending on the food, add the recommended amount of oil in the ActiFry spoon and pour the contents evenly in to the pan – fig.13.
- Put the pan back in the appliance and close the lid - fig. 15.

## Start the 2in1 cooking



- Plug the appliance, it will make a beep sound and the screen displays the flashing icons  and '1' for mode, and 29 min.
- Choose the cooking program desired for the pan. To select the cooking mode, press the + button until the required mode 1 to 9 is displayed
- The icon  appears on the screen - fig.17.
- Press the key  to select the tray mode. The corresponding icon  appears on the screen.
- Choose the cooking program desired for the tray using the + button until the required mode 2, 3, 4, 5, 6, or M for manual mode is displayed - fig.18.
- Press START/STOP key - fig.19.
- You can adjust the cooking time at any time by pressing +/- button.
- The cooking of the food in the pan starts.
- The minute by minute countdown starts
- While the food is cooking in the pan, get the food ready for cooking on the tray. Make sure you do not exceed the maximum level mark on the tray - fig.23.
- When the appliance beeps and stops automatically, open the lid and put the tray in - fig. 22 & 24.
- Close the lid again - fig.25 and press the START button - fig.26.
- The minute countdown resumes. The countdown will only be displayed in seconds where there is less than a minute left.
- Adjust the cooking time at any time by pressing +/- buttons.
- There is a pre-set time for each cooking mode which you can adjust.
  - Adjust the cooking time in minutes using the + and - keys.
  - Adjust the cooking temperature by pressing the key  and the + and - buttons to set the temperature desired.

## Remove your food

- When the cooking is finished, the timer will sound and the screen will start flashing and displaying '0' min: the appliance automatically stops cooking your food.
- Open the lid - fig.29.
- Remove the tray with the tray handle and take your food out - fig.30. Be careful, the tray is very hot after cooking. Always use the tray handle supplied with your appliance to remove it.
- Lift up the pan handle until you hear the "CLICK" - fig. 31.
- Remove the pan and take your food out - fig. 32.

## DELAYED START

Delayed start can be set for pan on its own, tray on its own or 2in1 program with one of the 9 automatic cooking modes or manual mode.

- Plug in the appliance.
- First set the cooking mode and cooking time required.
- Then press the Temperature/Timer key  for 3 seconds. The pictogram  with appear, and the timer will flash '0' min.
- Set the delayed start time using the +/- buttons (Intervals: 10 minutes) (up to a maximum of 9 hours).
- Press START, and the delayed start timer will begin to count down. Cooking will begins once the delayed start timer reaches 0:00.

## EASY TO CLEAN

### Cleaning the appliance

Never immerse the appliance in water or any other liquid. Do not use any corrosive or abrasive cleaning products. The removable filter must be cleaned regularly. To ensure your removable cooking pan and tray last longer, never use any metal utensils.

We do not recommend the use of any detergent other than washing up liquid to clean any part of the appliance.

- Leave the appliance to cool completely before cleaning.
- Open the lid by pressing the button - fig.1 and push up the latch to remove the lid - fig.8.
- Remove the tray.
- Lift the pan handle until you hear a «CLICK».

- Remove the paddle by pushing the release button - fig.6.
- Take out the cooking pan - fig.7.
- Remove the detachable filter - fig.9.
- To remove the turn-over ring, pull the clips outwards, then lift it off.
- All the removable parts, except the tray handle (7), are dishwasher safe - fig.10 or can be cleaned using a non abrasive sponge and some washing up liquid.
- Clean the inside and outside of the appliance and the handle with a damp sponge and a little washing up liquid - fig.11. Dry carefully before putting everything back in place.
- If food gets stuck or burnt onto the pan or paddle, leave them to soak in warm water before cleaning.

## A FEW TIPS IN CASE OF PROBLEMS...

The appliance does not work.

- The appliance is not plugged in properly.
  - Make sure the appliance is properly plugged in to a mains power socket.
- You have not yet pressed START/ STOP button .
  - Press START/STOP button .
- You have pressed START/STOP button but the appliance does not operate.
  - Close the lid.
- The appliance is not heating.
  - Call the customer Helpline (see below)
- The paddle does not turn.
  - The paddle does not turn at the beginning of cooking in cooking modes 2, 3, 4, 5, 7, 8 and 9. Restart using the manual mode to check the paddle turns. If it does not turn, check that it is correctly in place and adjust until you hear a "CLICK" sound. If it still does not operate contact our the customer Helpline.

The paddle does not stay in place

- The paddle is not locked.
  - Reposition the paddle until you hear it «CLICK» - fig.12.

The tray does not turn.

- The tray is not locked.
  - Adjust the position until you hear the "CLICK" sound.

The food has not been cooked uniformly.

- You have not used the paddle.
  - Put it in position.
- The food / chips have not been cut uniformly.
  - Cut the food / chips all to the same size.

The chips are not crispy enough.

- You are using a variety of potatoes unsuitable for chips.
  - Choose a variety of potato suitable for chips such as Maris Piper or King Edward for best results. Freshly harvested potatoes may have a high moisture content, either cook for a few minutes more or try using a different batch and/or variety of potatoes.
- The potatoes haven't been sufficiently washed and dried.
  - Wash, drain and dry the potatoes thoroughly before cooking.
- The chips are too thick.
  - Cut them more thinly.
- There's not enough oil.
  - Increase the quantity of oil (see "Cooking table").
- The filter (5) is blocked.
  - Clean the filter.

The food won't turn with the tray.

- The food is too thick.
  - Reduce the thickness of your food.

The food in the pan isn't cooked when using for 2in1 cooking.

- The tray was put on the pan when the cooking started.
  - Only put the tray in during the second half of the cooking phase.

The chips become broken whilst they are being cooked

- You are using too large a quantity or the chips are too long.
  - Reduce the quantity of potatoes and adjust cooking time. Or do not cut chips longer than 9 cm in length

The food remains on the edge of the pan.

- The pan has too much food.
  - Comply with the maximum quantities shown on the cooking table.
  - Put the turn-over ring in place when cooking chips.
  - Reduce the amount of food.
- Maximum level recommended exceeded.
  - Reduce the quantities.

The LCD screen does not work

- The appliance is not plugged in.
  - Plug the appliance in.
- The lid is open.
  - Close the lid.

The appliance is abnormally noisy.

- You suspect there is a problem in the way the appliance motor is working.
  - Call the customer Helpline below.

#### **Warning**

This content is compiled from multiple sources and is provided for reference purposes only. It may not be complete or fully applicable to all situations. If you are unable to resolve your issue, please contact the product manufacturer or an authorized service provider for official support.