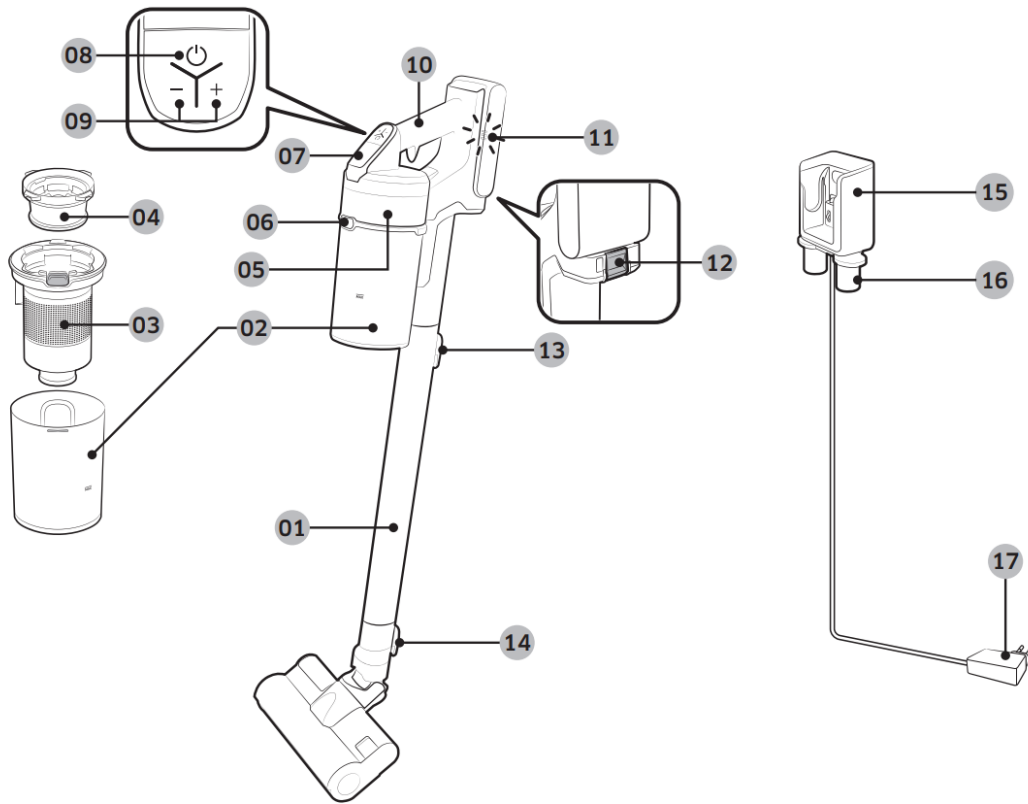


Name of the parts



01 Pipe	11 Battery level indicator
02 Dustbin	12 Battery release button
03 Metal mesh grille filter	13 Pipe release button
04 Washable micro filter	14 Brush release button
05 Ultra fine dust filter	15 Vacuum charging part
06 Dustbin release button	16 Accessory holder
07 Display	17 Battery charger
08 Power() button	
09 Suction power control button	
10 Handle	

*** Battery Spec**

VS20T75**** Series : Lithium-ion 21.9 V, 2850 mAh, 6 cell

VS15T70**** Series : Lithium-ion 21.6 V, 1800 mAh, 6 cell

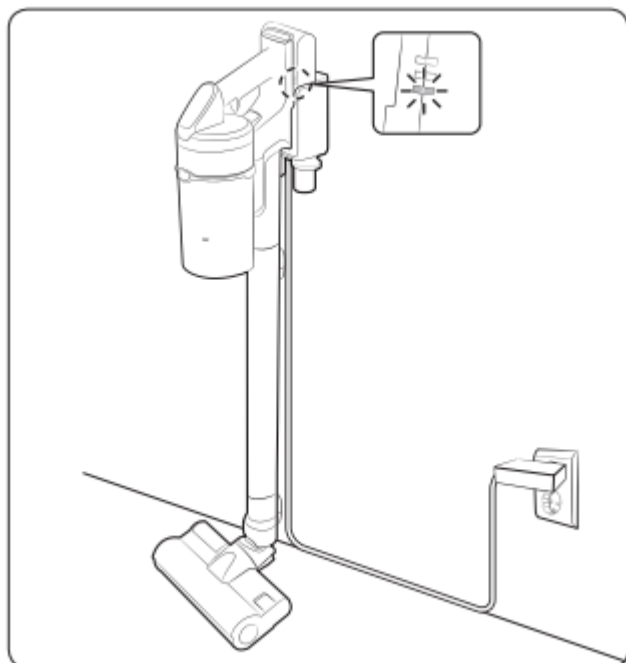
*** Those two batteries are not compatible with each other.**



Using the vacuum cleaner

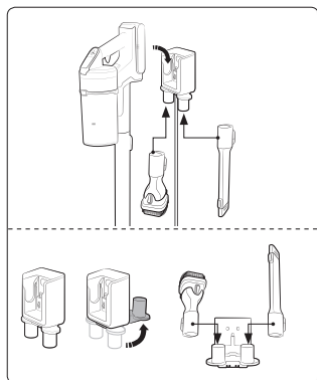
Using the wall mount

Charging



- Make sure the back of the battery is correctly placed onto the vacuum charging part.
- Check if the battery level indicator is displayed while charging.
- The battery level indicator blinks while charging. When charging is complete, the blinking stops and the light level dims.

Storing the accessories



Wall mount

- When accessories are disassembled to be stored, dust may fall from the suction part of the vacuum cleaner.
- After cleaning, operate in MAX mode for seconds.

Desk charger

- Place the desk charger on a desk after folding the accessory holders and assemble the accessories to the holders as shown in the picture.
- If the Extension Crevice Tool is inserted first, the accessory holders can be folded more easily.

Charging the battery

- * When the battery level indicator is at its lowest level and blinks() charge the battery.
- * When charging the vacuum, make sure the connection part of the wall mount is correctly connected.
- * The vacuum cleaner cannot be used while it is charging.

CAUTION

- Before ejecting the battery, the product must be turned off. (If the battery is forcibly ejected while the vacuum is operating, the vacuum can malfunction.)
- Be careful not to drop the battery. If you do, you can injure yourself or damage the battery.

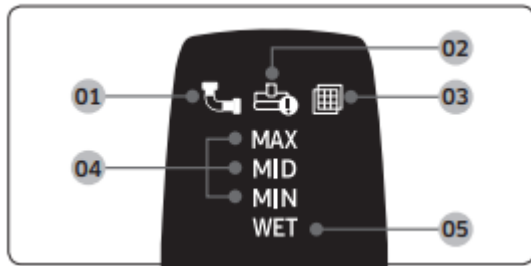
Ejecting the battery	
Press the battery release button at the rear of the handle to eject the battery.	
Re-inserting the battery	
Push the battery to the end until you hear it click	
Charging with a desk charger	
<ul style="list-style-type: none"> • Charge the battery at the desk charger. • Push the battery in firmly. • Check if the battery level indicator is displayed while charging. 	

Operating the vacuum cleaner

If the brush clings to floors (such as a carpet, a mat, or bedding, etc.) or does not spin properly, change the suction power to 'MIN' or 'MID' mode.

Power (⏻) on / off	
<p>When pressing the power button, the vacuum cleaner starts operation in 'MID' mode.</p> <ul style="list-style-type: none"> • When the wet brush is assembled, operation starts in 'WET' mode. 	
Controlling suction power	
<p>You can control the suction power of the vacuum cleaner.</p> <ul style="list-style-type: none"> • + button: Increases suction power. • - button: Decreases suction power. <p>* The suction power control button does not work in 'WET' mode.</p>	

Checking the display



01 Clogged: Something is clogging the dustbin, pipe, or the connected suction accessory.

02 Spinning brush stuck: Something is stuck in the connected spinning brush accessory.

*The spinning brush stuck display will not turn on if the spinning brush motor stops because it has overheated.

03 No Filter: The washable micro filter is not assembled correctly

04 Suction power: Displays the current suction power.

05 Wet brush cleaning mode: Displays when the wet brush is assembled.

* If either 01, 02, or 03 blinks a few times and the vacuum cleaner stops operation, please take action by referring to the maintenance part of this manual.

Using the accessories

If the spinning brush stops working, check whether it has overheated or has something stuck in it. (Please refer to the troubleshooting part of this manual).

<p>Disassembling the accessories</p> <ul style="list-style-type: none"> • When disassembling the pipe, press the release button at the rear of the pipe. • Before disassembling the accessories, operate in MAX mode for more than seconds to clean the accessories of any remaining dust or foreign matter. • When disassembling the brush, press the release button at the rear of the brush. 	
<p>Soft Action Brush</p> <p>Use to clean a wood or linoleum floor.</p>	
<p>Turbo Action Brush</p> <p>Use to clean various floor conditions at home, it is also suitable to clean carpet.</p>	
<p>Mini Motorized Tool</p> <p>Use to clean bedding.</p>	
<p>Combination Tool</p> <p>Use to remove dust from curtains, furniture, sofas, etc.</p>	
<p>Extension Crevice Tool</p> <p>Use to remove dust from grooves of window frames, chinks, corners, etc.</p>	
<p>Flexible Tool</p> <p>Use to clean the places hard to reach such as the upper or rear parts of furniture, or ceilings.</p> <p>NOTE</p> <p>The Flexible Tool can only be connected to the Combination Tool or the Extension Crevice Tool.</p>	

Wet Brush

Use to clean a wood or linoleum floor with a wet pad.

* The Wet Brush does not have a dust suction function.

* When attaching the wet pad, make sure the pad is in the center of the spin disk.

Using the multi-use wet pads

Attach a multi-use wet pad to each spin disk.

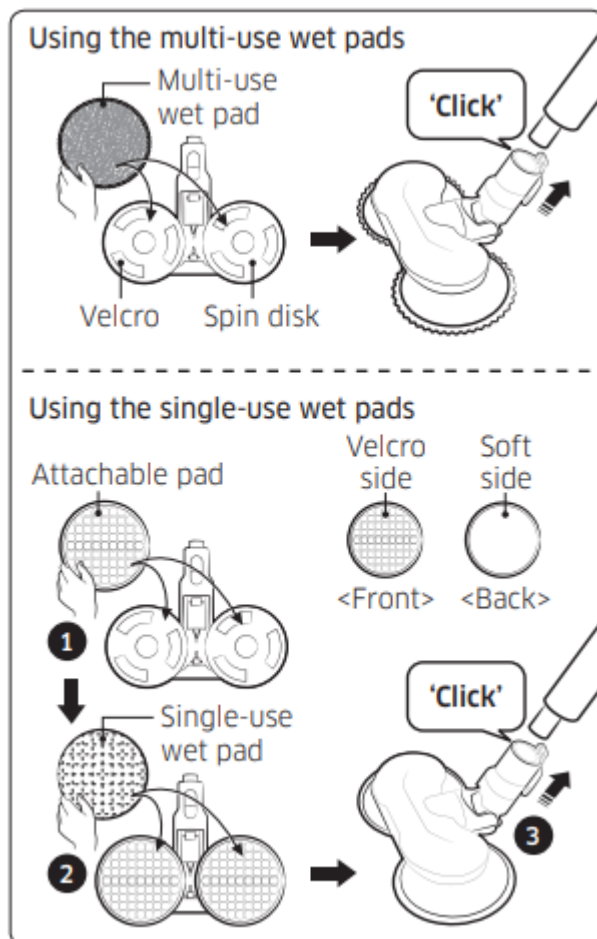
Using the single-use wet pads

(1) Attach an attachable pad to each spin disk and (2) attach a single-use wet pad on top of each of the attachable pads.

* When using the single-use wet pad, make sure the direction of the attachable pad is correct. Velcro side is the front side.

* Discard single-use wet pads after use. Keep the attachable pads for future use.

* If you use single-use wet pads without the attachable pads, the cleaning performance will not be as good.



Maintaining

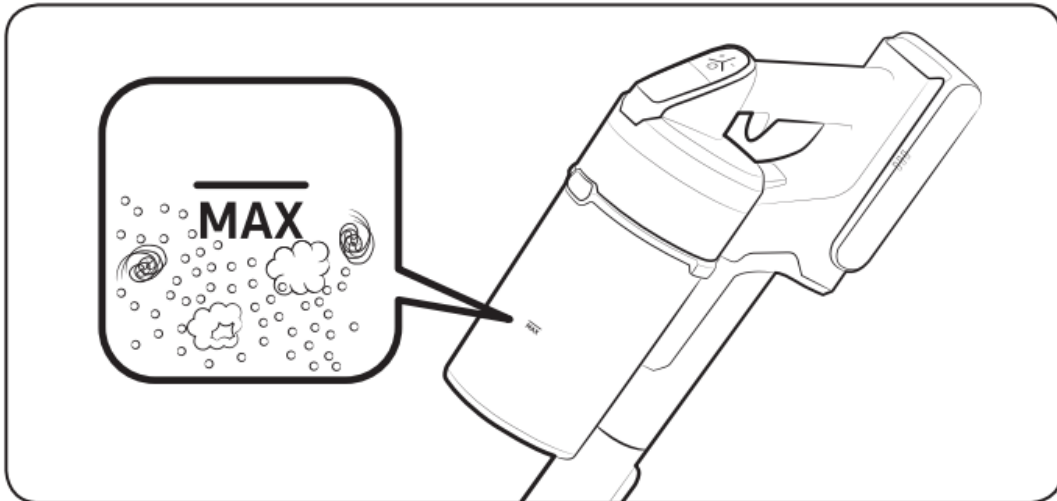


* For detailed information, please refer to the QR code.

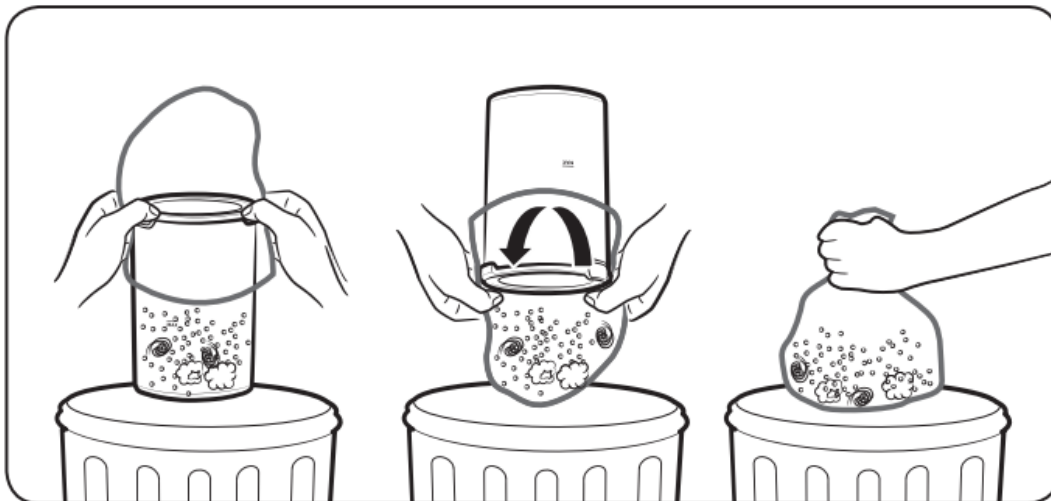
CAUTION

- Turn off the vacuum cleaner before cleaning it.
- If the dustbin or filter is filled with dust, the vacuum cleaner may stop to prevent overheating.
- You should clean the dustbin or filter before it fills to the MAX line

When to empty the dustbin



An easy way to empty the dustbin without making a mess



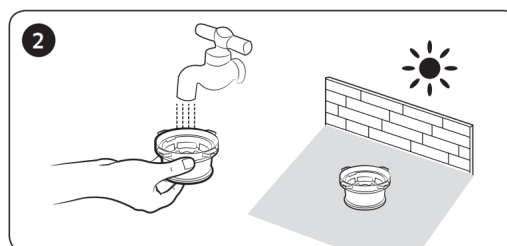
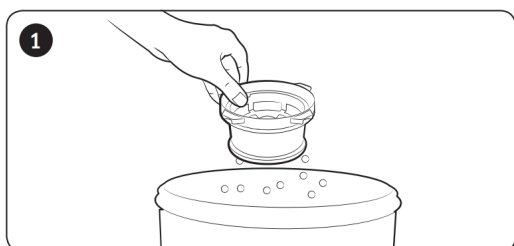
Emptying and cleaning the dustbin

	(1) After pressing the dustbin release button, (2) pull the dustbin in the direction of the arrow.
	Pull the washable micro filter out by pulling up on the filter handles inside the washable micro filter. (marked PULL)
	(1) While pressing the button, (2) turn the dustbin cover and (3) remove it from the dustbin.
	Brush the dust off the metal mesh grille filter with the combination tool. * Do not pull the rubber attached to the metal mesh grille filter.
	After emptying the dustbin, clean it and dry in the shade. * When heat is applied, product malformation may occur.
	Reassemble the dustbin cover aligning the dustbin release button with the groove of dustbin.
	Put the washable micro filter in the dustbin cover by fitting in grooves of the dustbin cover.
	Assemble the dustbin to the vacuum in the order shown in the image by pushing it until you hear it click.

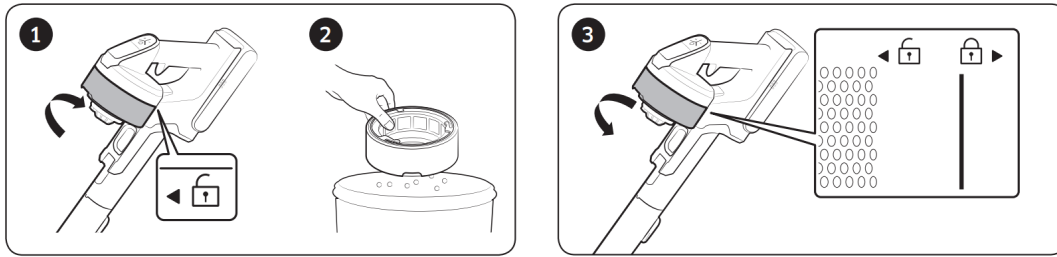
Cleaning the filter

- To maintain the best performance of the filter, remove the dust on the filter frequently and clean the filter with water once a month.
 - After cleaning, dry completely for more than 24 hours in the shade before use.
 - When heat is applied, product malformation may occur.

Washable micro filter



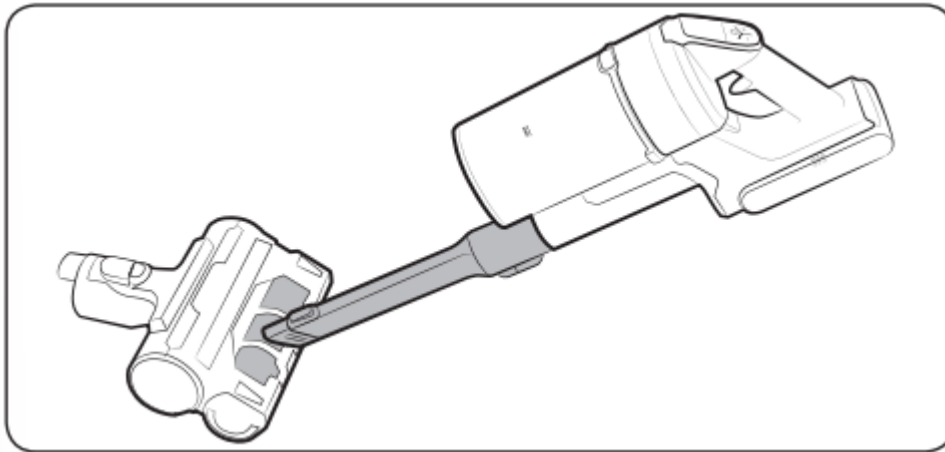
Ultra fine dust filter



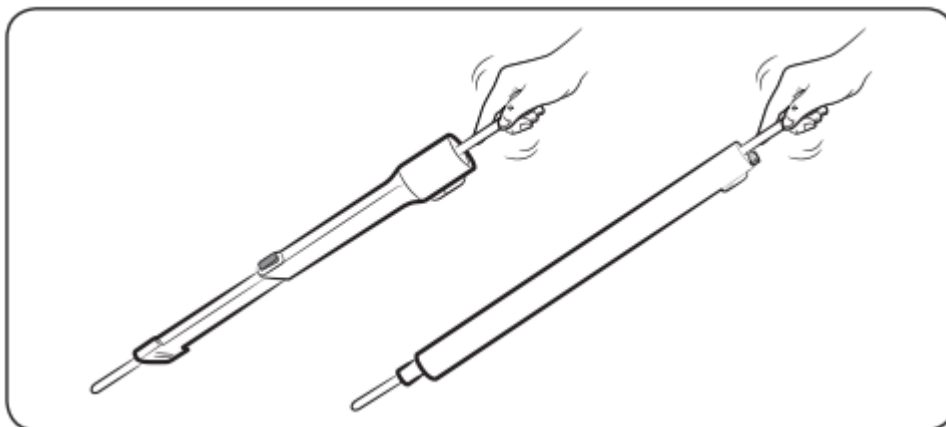
* When assembling, turn the filter until the line below the lock image is not visible.

Cleaning the accessories

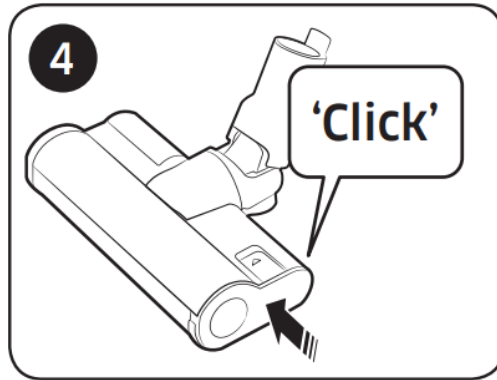
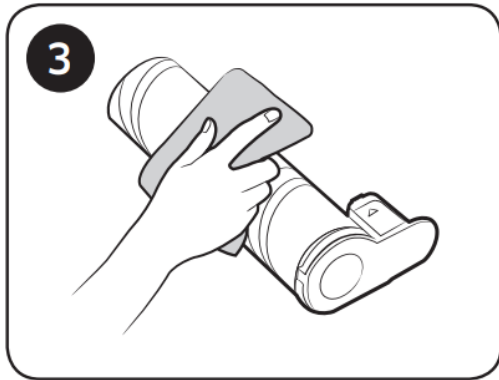
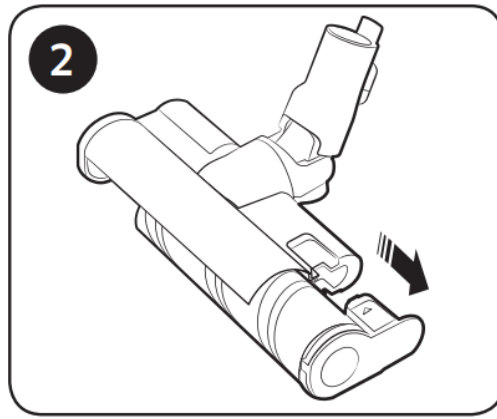
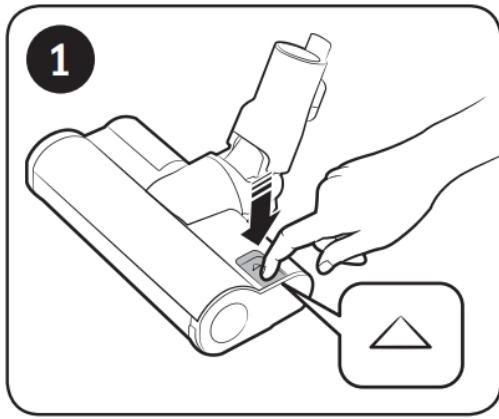
Mini Motorized Tool



Extension Crevice Tool / Pipe



Soft Action Brush



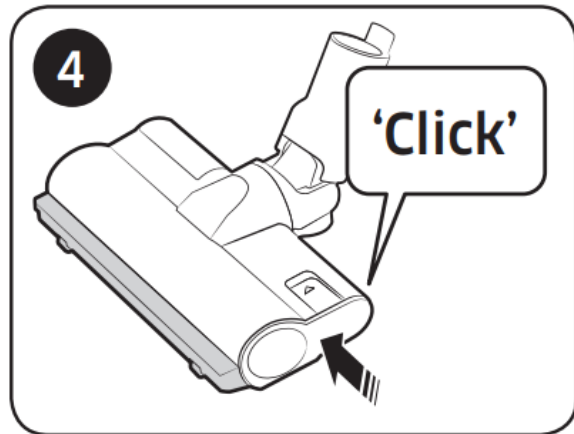
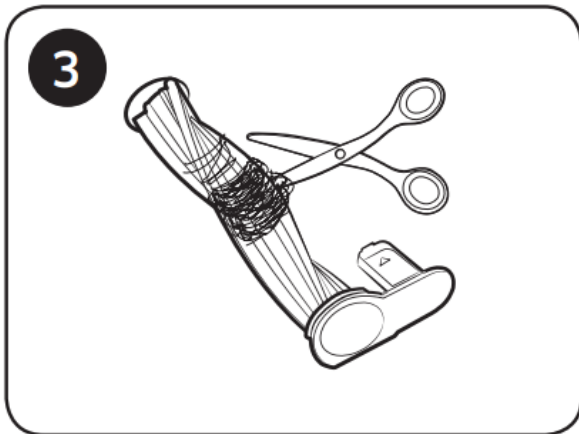
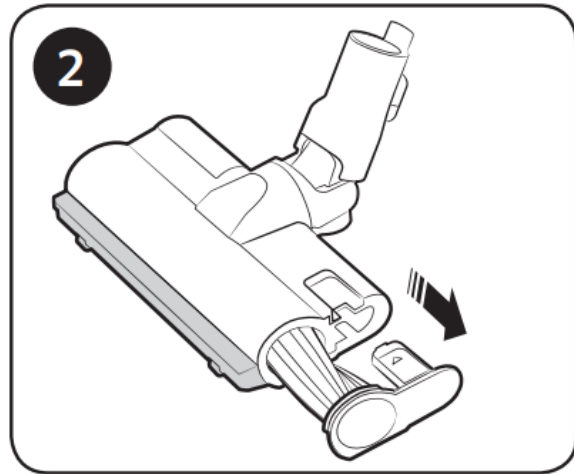
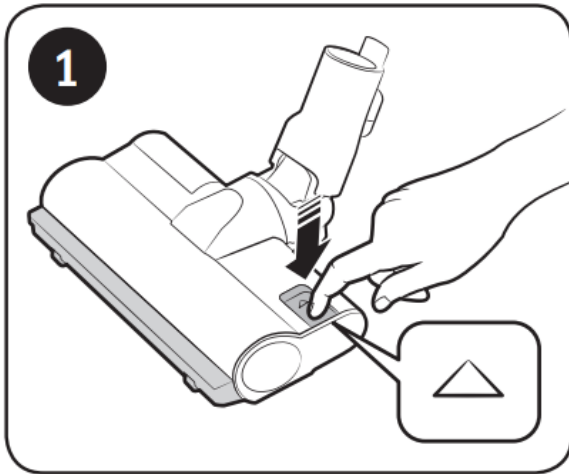
NOTE

- When foreign matter remains on the brush, remove it with a wet tissue or a dry cloth.

CAUTION

- Do not clean the spinning brush and suction part with water.
- Do not use the Soft Action Brush to remove moisture such as spilt liquid or pet's waste.

Turbo Action Brush

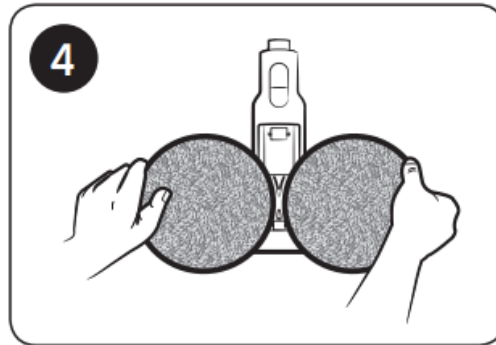
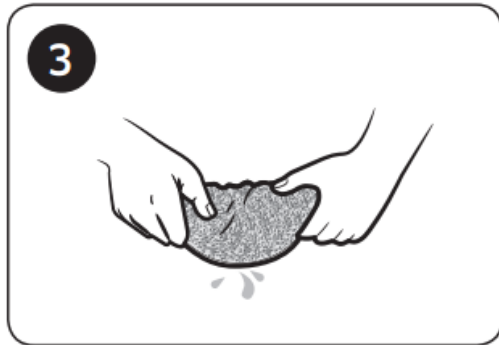
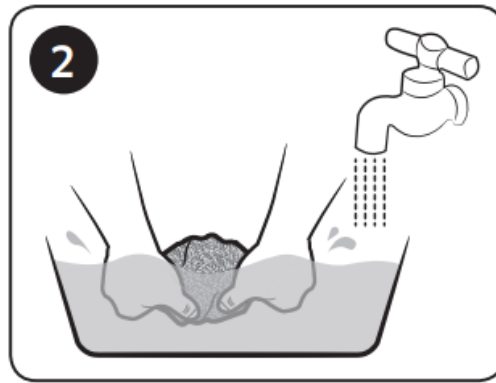
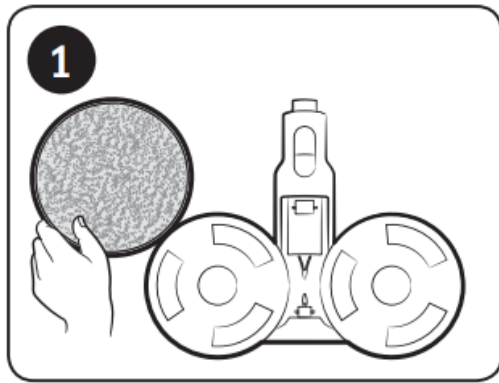


- If the foreign matter is not removed, use scissors to remove it.

NOTE

- If a cloth or other foreign matter is vacuumed up and tangled with the spinning brush, the spinning brush will stop working to protect the brush motor. After cleaning the brush, turn the power off and then on again.
- If a brush does not work after cleaning, turn the power off and then on again.
- When cleaning the brush, be careful not to catch your fingers in the fold of the brush.

Wet Brush



NOTE

- If the spinning brush does not work even after cleaning the Soft Action Brush and Wet Brush, the overheating prevention device of the brush motor might be in operation. Wait 30 minutes or more to cool the motor and operate again.

Troubleshooting

Problems	Solutions
<p>The vacuum cleaner does not work.</p>	<ul style="list-style-type: none"> • Check the battery level and charge the battery. • Check whether the product is turned off, and then press the power button to turn it on. • Check whether the pipe, dustbin or brush is blocked. • Check whether the washable micro filter is inserted correctly. • If the vacuum has not been used for a long time, charge the battery. • If the battery dies, replace the battery.
<p>Suction force decreases suddenly and the vacuum makes a vibrating sound.</p>	<ul style="list-style-type: none"> • Check whether a brush, dustbin or pipe is clogged with foreign matter and remove it. • Check whether the dustbin is fully filled with dust. If it is, empty the bin. • Check whether the filter is dirty. If it is, clean the filter.
<p>The vacuum cleaner cannot be charged.</p>	<ul style="list-style-type: none"> • Check if foreign matter (dust) is on the charging terminal. Remove any foreign matter with a cotton swab or soft cloth. • Check that the vacuum cleaner is properly aligned on the charging station and the LED of the battery level indicator is turned on. • Confirm that the voltage provided to the wall mount matches the requirements of the wall mount.
<p>The spinning brush does not work.</p>	<ul style="list-style-type: none"> • Turn off the vacuum and check whether the brush is clogged with foreign matter. If so, remove the foreign matter and restart the vacuum. • If the brush still does not spin, turn the vacuum cleaner off and back on a second time. <ul style="list-style-type: none"> – For the Soft Action Brush and Wet brush, if the vacuum overheats, it may take about 30 minutes for the motor to cool.



Problems	Solutions
<p>An odor is coming from the air outlet or filter of the vacuum cleaner.</p>	<ul style="list-style-type: none"> • Empty the dustbin and clean the filters frequently. <ul style="list-style-type: none"> –As your vacuum cleaner is a new product, it may have a slight odor for the first 3 months after purchase. –If you use the vacuum cleaner frequently, accumulated dirt in the dustbin or dust on the filter may generate an odor. • Replacement filters are available at your local Samsung service agent.
<p>Cleaning is finished but small dust particles come out of the brush.</p>	<ul style="list-style-type: none"> • After cleaning, operate the vacuum for 10 seconds or more on the MAX setting to suction up the small dust particles.
<p>Vacuum cleaner stops operation during cleaning.</p>	<ul style="list-style-type: none"> • The vacuum cleaner’s motor will shut off to prevent overheating: <ul style="list-style-type: none"> –When the vacuum operates with a full dustbin. –When the vacuum operates with suction part or brush clogged. –When the Extension Crevice Tool is used for long hours. • After correcting the cause of the problem, turn the product on again. (This case may differ depending on the ambient temperature.)
<p>Static electricity occurs when cleaning a thick and soft mat.</p>	<ul style="list-style-type: none"> • Some types of mats such as a (childcare center mat or a noise prevention mat for between floors, etc.) may cause static electricity. <ul style="list-style-type: none"> – Move the brush on a normal floor for a while and clean again. This should get rid of the static electricity.

Notes and cautions

Battery usage

NOTE

If your vacuum cleaner does not work after you charge the battery, change the battery. If it still does not work with the new battery, contact a Samsung service center.



When you purchase a battery in a Samsung service center, check for the genuine Samsung logo on the battery (**SAMSUNG**) and the battery name VS20T75**** Series: VCA-SBT90 / VS15T70**** Series: VCA-SBT90E).

CAUTION

- Do not disassemble the battery or the wall mount.
- Do not apply heat to the battery and do not put the battery in a fire.
- As the battery is manufactured only for this product, do not use the battery for other electronic appliances or other purposes.
- Removing the battery during operation may cause product malfunction.
- If the battery is removed while the vacuum cleaner motor is operating, the battery may not work for 30 seconds after being re-attached for safety reasons.
- Battery charging time and usage time may shorten with increased battery use. When the battery no longer charges or runs down quickly, replace the exhausted battery with a new one.
- Use only the wall mount and batteries provided by Samsung.
- Before inserting the battery, confirm that the battery is being inserted in the correct direction and orientation.
- When discarding a dead battery, put it into a battery collection box for recycling.
- If you are not going to use your vacuum cleaner for a long time, detach the battery from the vacuum.
- When attaching the battery to the vacuum, insert it until you hear a click.
 - This assures that the battery is firmly attached.
 - Otherwise, the battery may fall and could cause product damage or injury.
- Do not drop or strike the battery or subject it to a sudden shock.
- Do not disassemble the battery and make sure that you do not create a short circuit across the plus (+) and minus (-) terminals.
- Leaks from battery cells can occur under extreme usage or temperature conditions. If the liquid gets on your skin, wash the affected area quickly with water. If the liquid gets into your eyes, flush them immediately with clean water for a minimum of 10 minutes. Seek medical attention.
- To protect the motor and battery, the vacuum cleaner may not operate when the temperature is lower than 5 °C or higher than 45 °C.
- If you are not going to use the vacuum for a long period of time or you're going to be away from home for a long period of time, unplug the wall mount, and then detach the

wall mount from the battery. When the battery is not being charged and not being used, it will slowly discharge.

- When the battery level is low, recharge it. If the level of the battery remains low for a long period of time, it can cause the performance of the battery to degrade.

Operation

NOTE

- If excessive force is applied to a brush or foreign matter is caught in the spinning brush, the brush may stop working to protect the motor or vacuum. Turn the vacuum off, remove the foreign matter, and then turn the vacuum on. If the vacuum does not start, turn it off and then on again.
- Static electricity may occur depending on the humidity, temperature, or floor material, etc. in your home. If it happens repeatedly, contact a Samsung service center.
- Please charge the battery fully:
 - Before using a newly purchased battery for the first time or if you haven't used the battery for a long time.
 - When the battery level indicator is on the lowest indication and blinks.
- Gently clean the multi-use wet pads by hand, using a mild detergent.
- The multi-use wet pads can be cleaned using a washing machine.

However, if the wet pads are exposed to fabric softener or heat (such as boiling or hot water), they may get damaged and not work as well.

- Only use genuine Samsung wet pads.
- If the wet brush is used without a wet pad, any product malfunction will not be covered by warranty and a service fee will be charged for repair.
- To purchase additional multi-use wet pads for the wet brush, contact a Samsung service center.
- To purchase additional single-use wet pads. (*Make sure to check the model name VCA-SPA90.)

CAUTION

- When the spinning brush inside a brush is working, do not touch the brush.
 - Otherwise, your hand can be caught and it may cause an injury.
- Before using the wet brush, detach the wet pad and put some water on it, then reattach it to the spin disk.
- Do not use the vacuum cleaner on items that can be scratched (TV and monitor screens, etc.)

Maintenance

NOTE

- Sometimes the wheel of a brush can scratch the floor. Before using the vacuum cleaner, check the wheels of the brush.
 - If there is foreign matter on the wheel of the brush which cannot be removed easily, contact a Samsung service center.
- If the inner part of the wet brush is clogged with a large foreign matter, spinning speed decreases or stops.

CAUTION

- Storing the vacuum cleaner in sunlight for long hours may cause parts of the vacuum to deform or discolor. Therefore, after cleaning the parts of the vacuum cleaner, dry them in the shade.
- Do not clean the brush of the vacuum cleaner with water. Cleaning it with water can cause the brush to deform or discolor.
- Before cleaning the wall mount, you must unplug the wall mount.
- If you notice a continuous reduction in suction or the vacuum cleaner overheats abnormally, replace the ultra fine dust filter.
- After cleaning <a dustbin>, <a metal mesh grille filter>, or <a washable micro filter> with water, dry in the shade.
 - When heat is applied, product malformation may occur.

Warning

This content is compiled from multiple sources and is provided for reference purposes only. It may not be complete or fully applicable to all situations. If you are unable to resolve your issue, please contact the product manufacturer or an authorized service provider for official support.