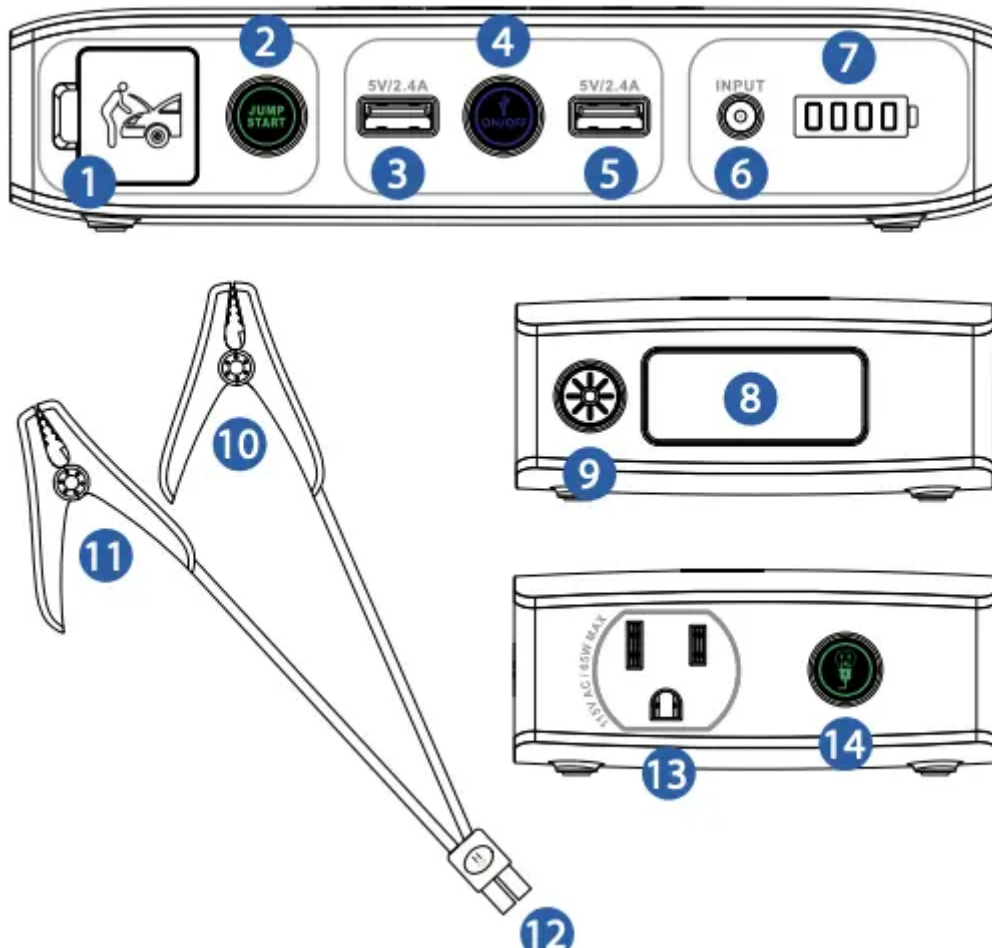


## User Manual for Charger

### INCLUDED ITEMS

- HALO BOLT ACDC 58830
- Jumper Cables
- HALO BOLT ACDC 58830
- Jumper Cables
- Car Charger
- AC Wall Charging Adapter
- Operating Instructions



## LOCATION OF CONTROLS

|                             |                             |
|-----------------------------|-----------------------------|
| 1   Jump Start Output       | 8   LED Floodlight          |
| 2   Jump Start Button       | 9   LED Floodlight Button   |
| 3   USB Output 1            | 10   Positive Clamp         |
| 4   USB Power ON/OFF Button | 11   Negative Clamp         |
| 5   USB Output 2            | 12   Jump Start Plug        |
| 6   DC Input: DC 14V/.85A   | 13   AC Output Port         |
| 7   LED Battery Indicator   | 14   AC Power ON/OFF Button |

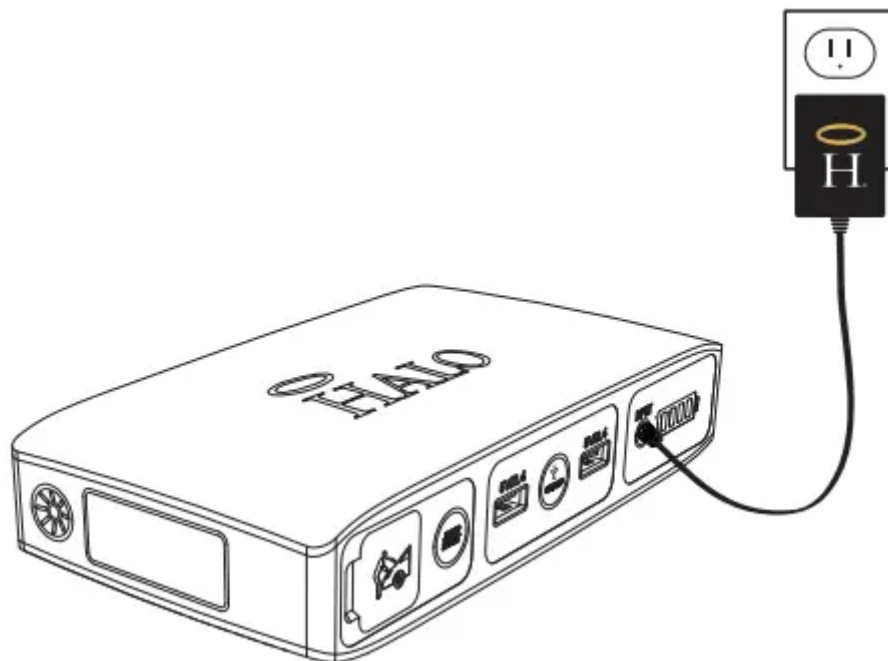
## OPERATING INSTRUCTIONS

Please make sure to fully charge the HALO BOLT ACDC 58830.

### CHARGING THE HALO BOLT ACDC 58830

To recharge the HALO BOLT ACDC 58830, use the provided AC wall charging adapter cable, and plug the AC adapter tip into the charge input.

Next, connect the AC adapter into a wall outlet. The HALO BOLT ACDC will automatically begin charging. When the HALO BOLT ACDC is fully charged, all four indicator lights will be solid green (This could take up to 9 hours).





When you're on the road, you can also use the supplied car charger to charge your HALO BOLT ACDC 58830.

When your HALO BOLT ACDC 58830 is on, the LED indicator lights will display the power level.

### HALO BOLT ACDC 58830 POWER LEVEL INDICATORS

| INDICATOR LIGHTS | HOW TO READ        | AMOUNT OF CHARGE |
|------------------|--------------------|------------------|
|                  | One solid light    | 0%-25%           |
|                  | Two solid lights   | 26%-50%          |
|                  | Three solid lights | 51%-75%          |
|                  | Four solid lights  | 76%-100%         |

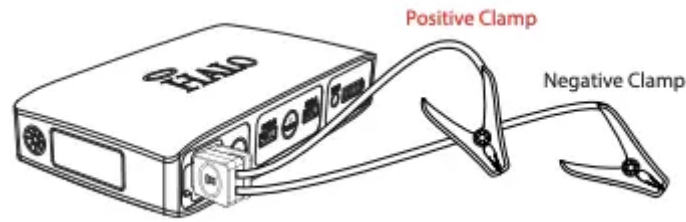
### HALO BOLT ACDC 58830 POWER LEVEL INDICATORS WHILE CHARGING:

| INDICATOR LIGHTS | HOW TO READ                                  | AMOUNT OF CHARGE   |
|------------------|--|--------------------|
|                  | First light blinking                         | 0%-25%             |
|                  | First light solid, second light blinking     | 26%-50%            |
|                  | First two lights solid, third light blinking | 51%-75%            |
|                  | First three lights solid, fourth blinking    | 76%-100%           |
|                  | All four lights solid                        | 100% fully charged |

### JUMP STARTING YOUR VEHICLE WITH THE HALO BOLT ACDC 58830

1. Plug the jumper cables into the jump start output on the HALO BOLT ACDC 58830.

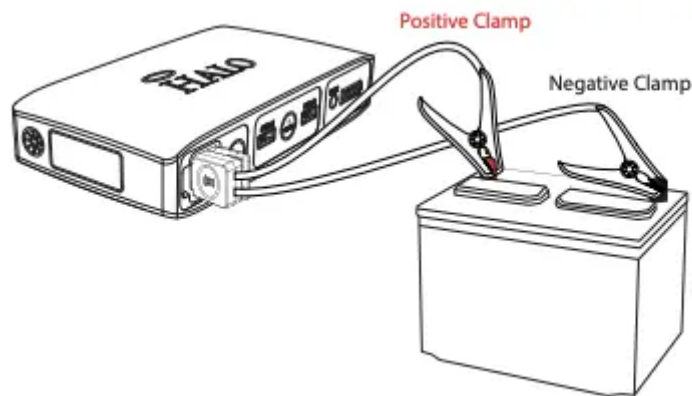




**NOTE:** Make sure the jumper cables are fully plugged into the jump start output before trying to jump your vehicle.

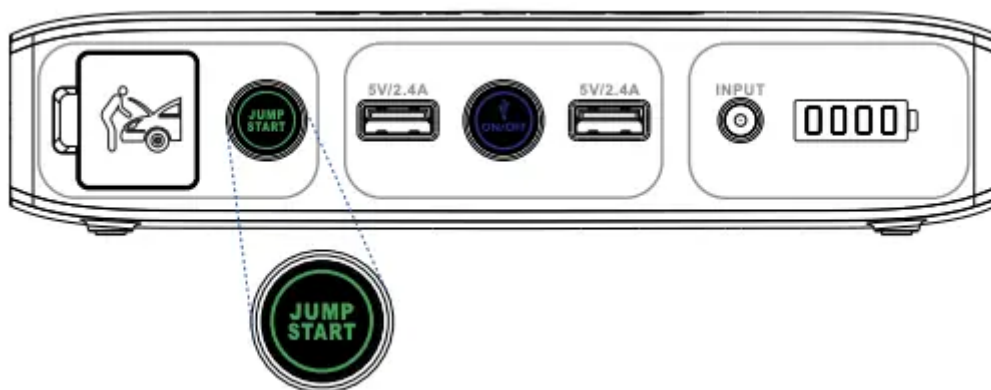
2. Attach the jumper cable clamps to the vehicle battery.

- Red clamp on positive terminal (+)
- Black clamp on negative terminal (-)



**NOTE:** Do not touch red (positive) and black (negative) clamps together at any point. If the jump start button flashes red, the jumper cables have been connected incorrectly. If this flashing red condition occurs, disconnect the jumper cables from the HALO BOLT ACDC 58830 and vehicle battery and restart the process from Step 1.

3. Press the “Jump Start” button and wait for solid green light.



**NOTE:** A flashing green light indicates safety checks are in progress.

4. Start your vehicle.

**NOTE:** The HALO BOLT ACDC 58830 will allow 3 consecutive jump start attempts after each time you press the jump start button. You must allow up to 15 seconds between each jump start attempt. During the 15 seconds, the jump start button will flash green while the HALO BOLT ACDC 58830 performs its safety checks. Once the jump start button illuminates solid green, the HALO BOLT ACDC 58830 is ready for the next jump start attempt.

If your vehicle does not start after three attempts, we recommend you consult a certified mechanic.

5. Disconnect the jumper cable clamps from the car battery.

**NOTE:** While jump starting your vehicle, you cannot charge your electronic devices using the USB or AC output ports and you cannot charge the HALO BOLT ACDC 58830 via the AC wall charging adapter.

## JUMP START TROUBLESHOOTING TIPS



| Condition  | Potential Cause   | Solution  |
|--|---|---|
| <b>HALO BOLT ACDC 58830 Jump Start button has been pressed but nothing happens</b> | The blue LED power button is ON.  | Ensure the unit is OFF and then press the Jump Start button.  |
| <b>HALO BOLT ACDC 58830 Jump Start button flashes red</b>                          | The jumper cables have not been properly connected to the vehicle battery.  | Check the jumper cables and ensure that the red clamp is connected to the positive terminal (+) and the black clamp is connected to the negative terminal (-) |
| <b>HALO BOLT ACDC 58830 Jump Start button flashes green continuously</b>           | The HALO BOLT ACDC 58830 is waiting to be connected to a battery  | Check the jumper cables and ensure they are properly connected to the battery   |
| <b>HALO BOLT ACDC 58830 shuts off unexpectedly</b>                                 | The HALO BOLT ACDC 58830 is not sufficiently charged to jump start the vehicle.   | Recharge the HALO BOLT ACDC 58830.  |
|  | The HALO BOLT ACDC 58830 detects that it is connected to a vehicle battery that does not require a jump start. This could indicate that the vehicle battery or other component is faulty. | It is recommended that you consult with a certified mechanic.   |
| <b>HALO BOLT ACDC 58830 battery indicators flash green</b>                         | The HALO BOLT ACDC 58830 has detected a high temperature condition.   | Disconnect the HALO BOLT ACDC 58830 and allow it to cool for several minutes. Then try the jump start process again.  |
| <b>HALO BOLT ACDC 58830 Jump Start and On/Off button flashes red and blue</b>      | This could occur when attempting to jump start a vehicle while other electrical components (i.e. headlights, heater, radio, etc.) are on.   | Turn off your headlights and any other components that may drain your car battery and try the jump start process again.                                       |
|  | The vehicle battery may be faulty.  | It is recommended that you consult with a certified mechanic.   |

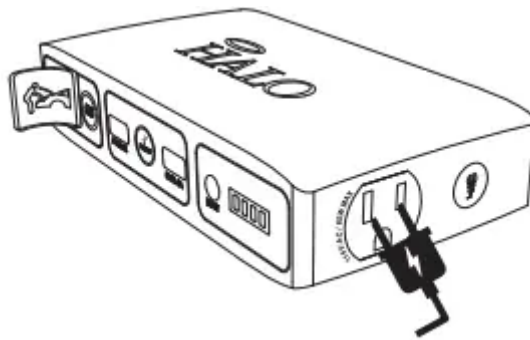


**NOTE:** If none of these troubleshooting tips work, please consult a certified mechanic for assistance.

## CHARGING A LAPTOP (VIA THE AC OUTPUT PORT)

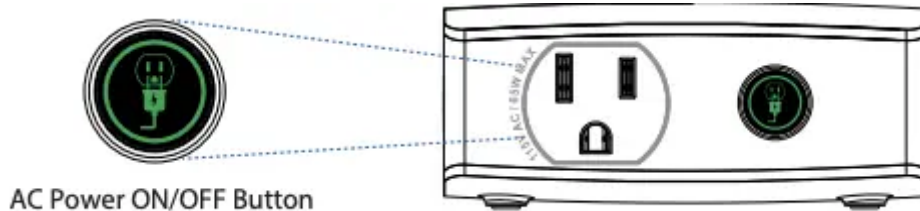
1. Connect the AC power plug from your laptop (or other electronic device which is rated at 65 watts or less) into the AC output port of the HALO BOLT ACDC 58830.

**NOTE:** Any electronic device can be powered by the AC output port as long as it is rated at 65 watts or less. BE SURE TO CHECK THAT YOUR LAPTOP OR OTHER ELECTRONIC DEVICE IS RATED AT 65 WATTS OR LESS.



2. Press the AC Power ON/OFF Button and wait for a solid green light

**NOTE:** Make sure the AC power plug is fully plugged into the AC output port before turning on the AC Power ON/OFF Button.



**NOTE:** A flashing green light indicates safety checks are in progress. If you see a flashing red light, the device you connected is rated for greater than 65 watts and cannot be powered using the HALO BOLT ACDC 58830.

The HALO BOLT ACDC 58830 will automatically power off after 30 minutes of inactivity. While jump starting your vehicle, you cannot charge your electronic devices using the USB or AC output ports and you cannot charge the HALO BOLT ACDC 58830 via the AC wall charging adapter.

## LAPTOP CHARGING TROUBLESHOOTING TIPS

| Condition  | Potential Cause  | Solution   |
|--|--|--|
| <b>HALO BOLT ACDC 58830 AC button flashes red</b>          | Electronic device is rated at greater than 65 watts  | Only electronic devices rated at 65 watts or less can be used with the HALO BOLT ACDC 58830                        |
|  | The HALO BOLT ACDC 58830 is not sufficiently charged to power the connected electronic device  | Recharge the HALO BOLT ACDC 58830  |
| <b>HALO BOLT ACDC 58830 shuts off unexpectedly</b>         | The HALO BOLT ACDC 58830 is not sufficiently charged to power the connected electronic device. | Recharge the HALO BOLT ACDC 58830  |
| <b>HALO BOLT ACDC 58830 battery indicators flash green</b> | The HALO BOLT ACDC 58830 has detected a high temperature condition.                            | Disconnect the HALO BOLT ACDC 58830 and allow it to cool for several minutes. Then try to power your device again. |
| <b>A single LED battery indicator flashes green</b>        | The HALO BOLT ACDC 58830 is getting low on power.  | Recharge the HALO BOLT ACDC 58830  |

## CHARGING AN ELECTRONIC DEVICE USING 5V/2.4A USB OUTPUT PORT

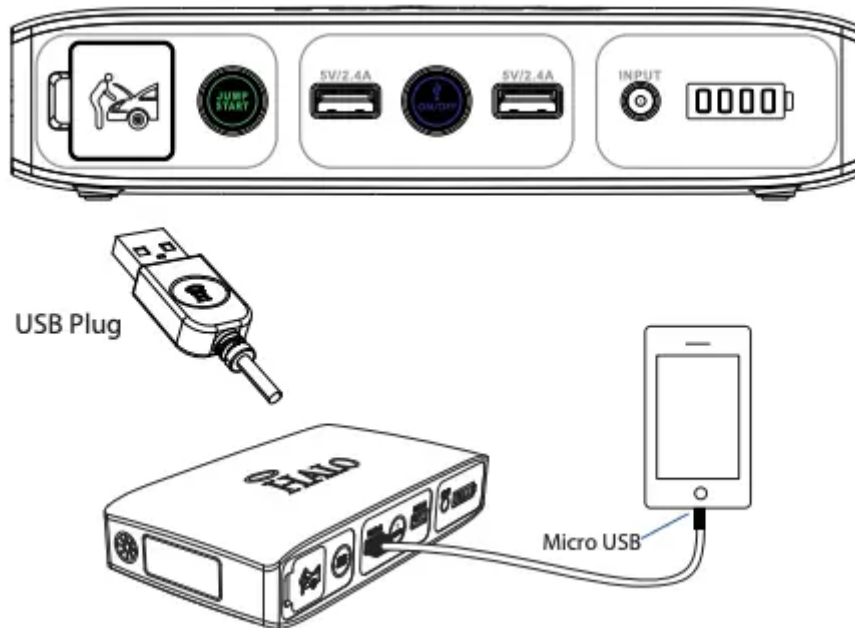
1. Connect the Micro USB tip of the supplied Micro USB cable into the Micro USB input of your electronic device and connect the Standard USB end of the supplied Micro USB cable into either one of the HALO BOLT ACDC 58830 USB 5V/2.4A Output ports.

**NOTE:** If your electronic device does not have a Micro USB Input, your HALO BOLT ACDC 58830 is also compatible with the charging cable provided with your electronic device. To use, plug the Standard USB end of the cable into either one of the two 5V/2.4A USB Output ports located on your HALO BOLT ACDC 58830.

2. Turn on the USB charging feature by pressing and releasing the USB Power ON/OFF Button on the HALO BOLT ACDC 58830.

**NOTE:** The HALO BOLT ACDC 58830 USB charging feature will automatically power off after 30 minutes of inactivity.

While jump starting your vehicle, you cannot charge your electronic devices using the USB or AC output ports and you cannot charge the HALO BOLT ACDC 58830 via the AC wall charging adapter.



### HALO SMART CHARGE TECHNOLOGY

Your HALO BOLT ACDC 58830 contains the HALO SMART CHARGE TECHNOLOGY to achieve higher compatibility for charging standard 5V USB electronic devices. The HALO SMART CHARGE TECHNOLOGY will allow the HALO BOLT ACDC 58830 to communicate with your electronic device and provide the fastest and safest charge for that device.

### COMPATIBILITY

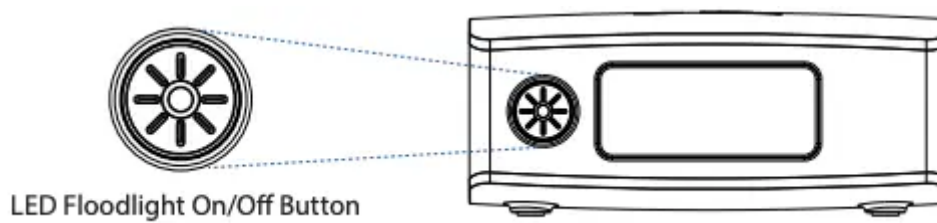
Standard 5V USB electronic devices including: Mobile phones, Tablets, PSP, NDS, MP3, MP4, MP5, Bluetooth, GPS, Cameras, and more.



### USING YOUR HALO BOLT ACDC 58830 FLOODLIGHT

The floodlight can be turned on and off by simply pressing and releasing the floodlight ON/OFF button. The floodlight will automatically turn off after 2 hours of inactivity.





**NOTE:** Do not look directly into the LED floodlight.

**Warning**

This content is compiled from multiple sources and is provided for reference purposes only. It may not be complete or fully applicable to all situations. If you are unable to resolve your issue, please contact the product manufacturer or an authorized service provider for official support.

---

Document generated by [ManualsFile](#)