

## Features of your Sunbeam Verve Iron

### Powerful shot of steam

Pressing the shot of steam button instantly produces a powerful shot of steam to remove stubborn wrinkles.

### Vertical shot of steam

Pressing the shot of steam button with the iron in an upright position produces a vertical shot of steam, which is ideal for steaming curtains and suits, and removing creases from delicate fabrics.

### Fine spray mist

Pressing the spray button provides a fine mist spray to dampen hard-to-iron fabrics.

### Easy-fill water inlet

Holds 300ml of water for continual high steam performance without having to refill the tank regularly.

### Drip-stop steam system

The drip-stop steam system automatically stops water flowing to the steam chamber should the temperature fall too low to generate steam. This prevents dripping, even at low temperatures.

### Full length button groove

For ironing around buttons.

### 2400 watts for fast heat up

Provides faster initial heat up and rapid heat recovery during ironing. The 2400W element helps to maintain your selected temperature, and provides superior shot of steam output.

### Teflon® Platinum Pro non-stick soleplate

(SR6200 & SR6500)

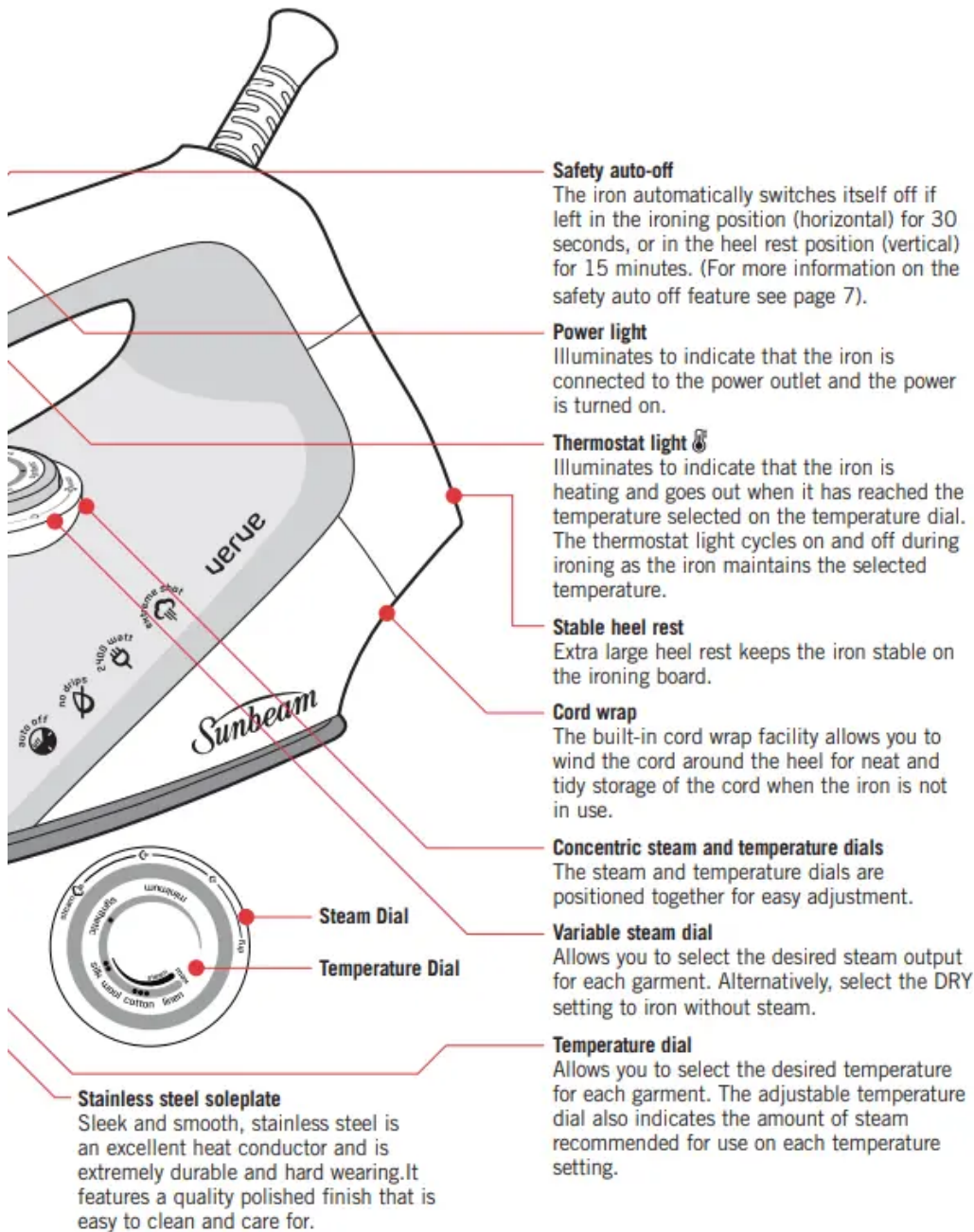
Teflon® Platinum Pro is DuPont's premium non-stick coating. It glides easily across all types of fabric and prevents sticking. This hard wearing surface consists of a unique three coat system for superior durability and scratch resistance. It simply wipes clean for fuss free maintenance.

### Resilium® non-scratch soleplate

(SR6800)

Resilium® is a durable, scratch resistant surface that provides a superior glide and prevents rucking. Exclusive to Sunbeam, this premium soleplate features 172 steam holes to maximise steam distribution.





## Using your Sunbeam Verve Iron

### Before first use

Remove any adhesive stickers, plastic covers or cardboard sleeves from the soleplate. Ensure that all adhesive is removed by rubbing the soleplate with a cloth dampened with methylated spirits.

Fill the water tank and empty the water. This will rinse out any foreign particles remaining in the water tank from the manufacturing process.

**NOTE:** When turned on for the first time, your new iron may give off vapours for up to 10 minutes. This is due to the initial heating of the materials used. It is safe, not detrimental to the performance of the iron, and will not reoccur.

### **Filling the iron with water**

Before filling the iron with water ensure the power is turned off and the plug is removed from the power outlet. The iron can be filled with water while it is hot. Place the iron on its heel and open the water inlet cover.

Slowly pour water into the water inlet until the maximum water level is reached. Do not exceed the maximum water level indicator. Push the water inlet cover firmly to close.

**NOTE:** The special soleplate design allows you to use tap water with your Verve iron without affecting the steam performance. However in very hard water areas, Sunbeam recommends the use of distilled water, or water which has been demineralised.

For best performance, we recommend the use of Sunbeam Water Demineraliser, available from selected retailers. This will produce up to 30 litres of demineralised water.

Do not fill the iron with fabric conditioner, starches or any other solution as these will damage the steam mechanism. Do not use contaminated water.

### **Using your iron**

1. Insert the plug into a 230/240 volt power outlet and turn the power on. The power ON light (positioned on top of the handle) will illuminate to indicate that the iron is switched on and heating.
2. Turn the temperature dial to the desired setting by aligning the setting on the dial with the temperature indicator. The thermostat light will illuminate to indicate that the iron is heating to the selected temperature. When the thermostat light goes out the iron has reached the selected temperature and is ready to use.

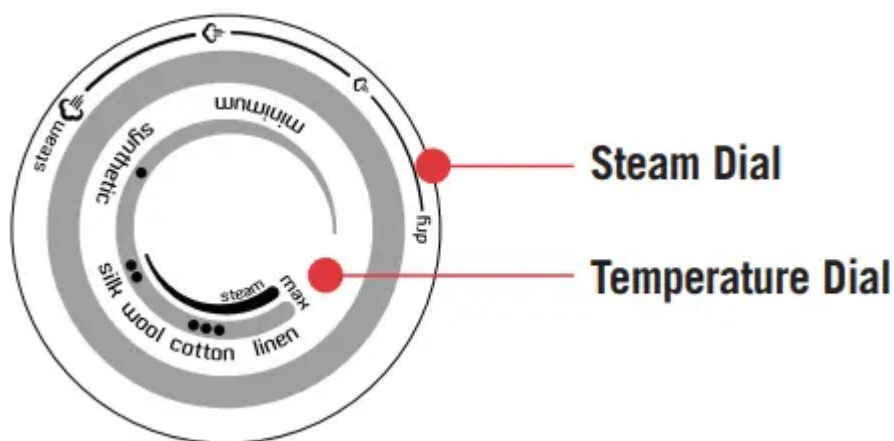
**NOTE:** When the temperature dial is changed from a high setting to a lower temperature setting during ironing, the thermostat light will go out immediately. This indicates that the iron is cooling to the selected temperature. To ensure that the iron has reached the selected temperature and is not too hot, wait until the thermostat light comes on again and then goes out before ironing.

### **Steam ironing**

Follow steps 1 and 2 above.

**NOTE:** When steam ironing, ensure that the temperature dial is set to any temperature within the steam band, and that the tank is at least  $\frac{1}{4}$  full of water.

3. Turn the steam dial to the desired steam setting.



For best results, select the steam setting that corresponds to the selected temperature, as indicated on the temperature dial.

### Dry ironing

Follow steps 1 and 2 above.

3. Select DRY on the steam dial. This will cut off the steam flow if there is water in the tank.

### Using the shot of steam

The shot of steam can be used when dry or steam ironing, when the temperature dial is set to any temperature within the steam band or above the two dot (••) setting.

1. Ensure the tank is at least  $\frac{1}{4}$  full of water.
2. Select the desired temperature and wait until the thermostat light goes out.
3. Press the shot of steam button several times with the iron on the soleplate to prime the pump.

**Note:** If the tank has run dry, it may be necessary to re-prime the pump after filling the iron with water.

### Using the spray mist

The spray mist can be used whether dry or steam ironing to pre-dampen hard to iron fabrics.

1. Ensure the tank is at least  $\frac{1}{4}$  full of water.
2. Press the spray button during ironing to release a fine mist from the spray nozzle.

## The safety auto-off feature

(Models SR6550, SR6650 & SR6850)

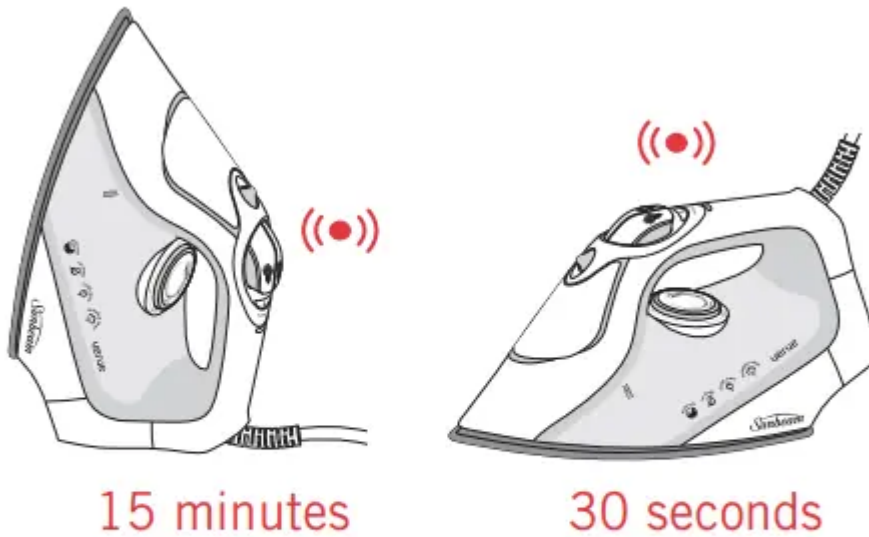
The safety auto-off mechanism automatically turns the iron off if you forget.

The iron will automatically shut off if left on the heel rest (vertical) for 15 minutes, or in the ironing position (horizontal) for 30 seconds, without being moved. (See figure 2).

The thermostat and power lights on the handle will flash and a warning beep will sound to let you know that you have left the iron unattended.

Power to the iron's heating element will be cut.

Once the iron is moved the power will reconnect. Allow the iron to heat until the thermostat light goes out, and continue ironing as normal.



*Figure 2*

## Care and Cleaning

### After each use

1. Turn the power off and remove the plug from the power outlet.
2. Allow the iron to cool before winding the cord around the built-in cord wrap.

### Storage

Always store the iron on its heel rest.

Do not store the iron with the soleplate facing down, or in the carton.

### Cleaning

To clean the exterior of your iron, wipe over with a damp soft cloth and wipe dry.

Caution: Do not use harsh abrasives, chemical cleaners or solvents to clean the exterior of your iron as these will damage the surface.

### Cleaning the steam holes

To remove build up from the steam holes which may affect steam performance, use a cotton wool tip moistened in methylated spirits.

#### **Cleaning the Resilium® soleplate (SR6850)**

Wipe with a soft damp cloth and wipe dry.

#### **Cleaning the Stainless Steel soleplate (SR6650)**

Using a stainless steel or metal cleaner, rub gently with a damp cloth and wipe dry.

#### **Cleaning the Teflon® Platinum Pro non-stick soleplate (SR6250, SR6550)**

The non-stick coating reduces sticking of fabrics and starches to the soleplate. Do not iron over sharp objects such as buttons, studs and zippers, as these may scratch the surface.

Wipe the soleplate with a damp soft cloth after each use. If polyester has burnt to the soleplate, iron a damp cotton cloth while hot.

Caution: Do not use scouring pads, abrasives or harsh cleaners to clean your Resilium®, Teflon® Platinum Pro or Stainless steel soleplate, as these will scratch and damage the surface.

## **Ironing Tips and Tricks**

### **Tip # 27 - Iron shirts like a pro**

Start with the collar, working from the outer edges into the middle. Iron the shoulder next, followed by the cuffs and sleeves. Place the collar at the narrow end of the board so that one front panel of the shirt is extended flat. Iron the front panel from shoulder to shirt tail. Rotate to iron the back of the shirt. Rotate and complete the remaining front panel.

### **Tip # 34 - Tips for T-shirts**

Straighten seams on t-shirts before hanging out to dry. To avoid damage to printed graphics and logos turn the t-shirt inside out and iron the reverse side of the print. Never iron areas of your t-shirt where perspiration marks are visible as the heat of the iron will permanently fix the stain.

### **Tip # 54 - Hung out to dry**

When washing is complete, remove shirts from the machine immediately, shake them out and hang them on coat hangers to air dry – this will keep wrinkles to a minimum.

### **Tip # 18 - Selecting the right temperature**

If you are unsure of the correct setting for a particular garment, test a small area such as a seam or inside hem before ironing a visible area. Start with a low temperature and slowly increase the heat to find the best setting.

### **Tip # 33 - Don't be afraid to iron silk**

Don't be afraid to iron silk. Although delicate in appearance, silk is the strongest and most resilient of all natural fibres. To achieve the best results, set to a low cotton setting and use regular shots of steam. Always use a pressing cloth to avoid shine marks.

**Tip # 13 - Ironing the seam**

Always press seams in the same direction they were made. When a garment is produced, the fibres will naturally settle in the direction they were initially pressed, so it's best not to iron against the grain.

**Tip # 26 - Sort types of fabric**

Sort articles to be ironed according to the type of fabric. This will reduce the need to adjust the temperature constantly. Start with articles requiring lower temperatures and work your way through to items requiring higher settings.

**Tip # 2 - Summer frocks and frills**

Steam is the key when ironing delicate summer fabrics such as muslin, cotton and linen. Don't press down with the iron, simply hover above the garment and steam it using a vertical shot of steam. Ruffling, netting, tulle or intricate hand detailing is also best ironed using this method.

**Tip # 5 - Pressing your winter woollies**

Steam is crucial when pressing your winter woollies. Woollen garments can be hung and steamed using the vertical shot of steam feature. After steaming, brush the garment with your hand to plump up woollen fibres. If ironing the garment flat it is best to use a pressing cloth. Don't be afraid to apply pressure – steam and hold.

**Tip # 42 - Table settings to impress**

To avoid unwanted creases always iron your table cloth after taking it out of the cupboard. A dinner party is a special occasion, so treat the table cloth as you would your own outfit. For best results, lay towels across your table and iron the table cloth over the towels. This will save you time and ensure a beautifully presented table setting.



# Ironing Chart



<b>Fabric</b>	<b>Temp setting Ironing</b>	<b>Ironing recommendation</b>
Acrylic	MINIMUM Min to •	Dry iron on reverse side of fabric
Acetate	MINIMUM Min to •	Dry iron on reverse side of fabric while still damp
Nylon	MINIMUM Min to •	Iron on reverse side of fabric
Polyester	SYNTHETIC •	Iron on reverse side of fabric
Rayon	SYNTHETIC •	Iron on reverse side of fabric
Viscose	SYNTHETIC •	Mainly dry iron. Steam can be used under manufacturer's instructions
Silk	SILK ••	Iron on reverse side of fabric. Use an ironing cloth to prevent shine marks and use regular shots of steam
Cotton Blends	WOOL ••	Check label and follow manufacturer's instructions. Use setting for the fibre requiring the lowest setting
Wool	WOOL ••	Steam iron on reverse side of fabric or use an ironing cloth. Brush gently to raise the fibres
Wool Blends	WOOL ••	Steam iron on reverse side of fabric or use an ironing cloth. Brush gently to raise the fibres
Corduroy	COTTON •• •	Steam iron on reverse side of fabric or use an ironing cloth. Brush gently to raise the fibres

Cotton	COTTON •• •	Steam iron while still damp or use spray to dampen. Use medium to high steam
Linen	LINEN ••• to Max	Iron on reverse side of fabric or use an ironing cloth to prevent shine marks, especially with dark colours. Iron while still damp or use spray to dampen. Use medium to high steam
Denim	MAXIMUM • •• to Max	Iron while still damp or use spray to dampen. Use maximum steam

### Warning

This content is compiled from multiple sources and is provided for reference purposes only. It may not be complete or fully applicable to all situations. If you are unable to resolve your issue, please contact the product manufacturer or an authorized service provider for official support.