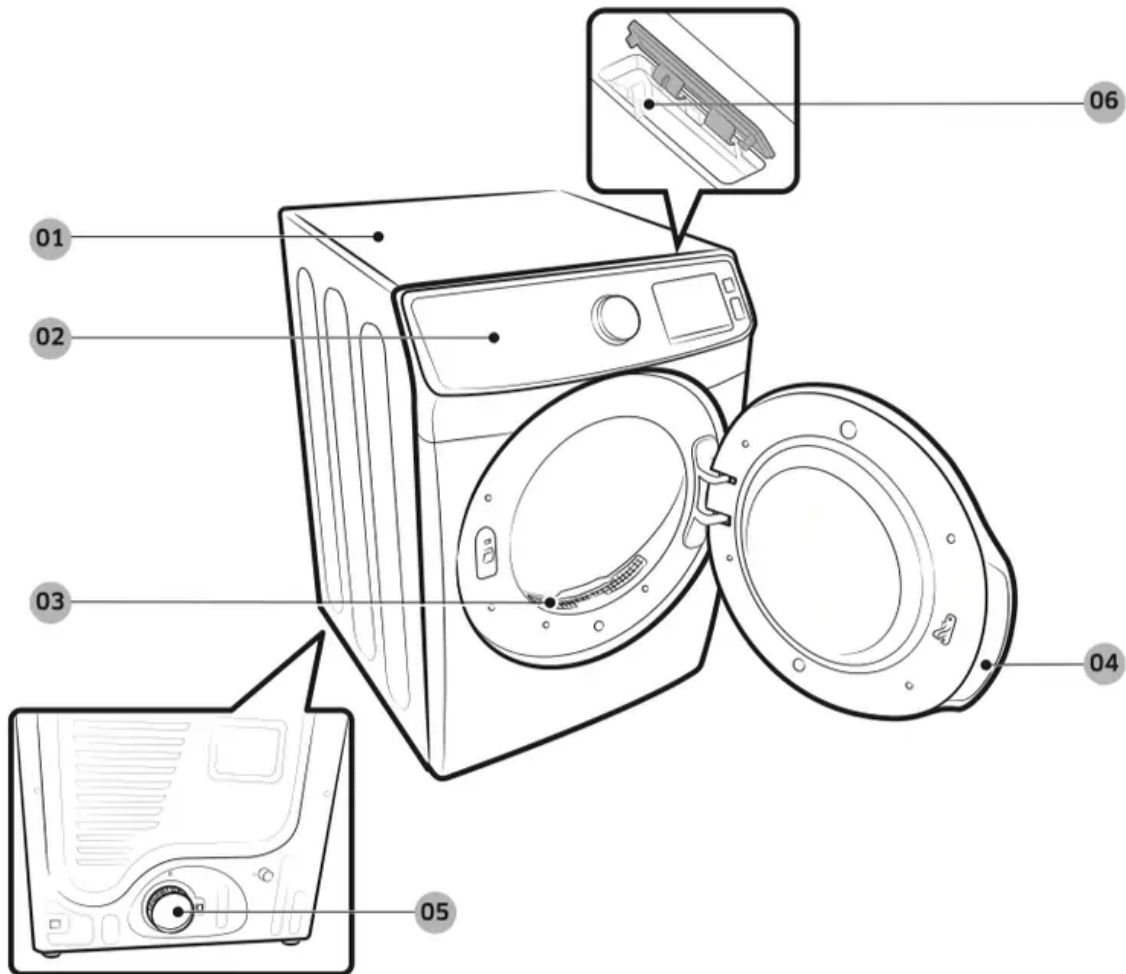


## What's included

Make sure all the parts are included in the product package. If you have a problem with the dryer or the accessories, contact a local Samsung service center or the retailer.

### Dryer at a glance



- 01 Worktop
- 02 Control panel
- 03 Filter
- 04 Door
- 05 Exhaust duct
- 06 Smart Home Adapter Port

## Before you start

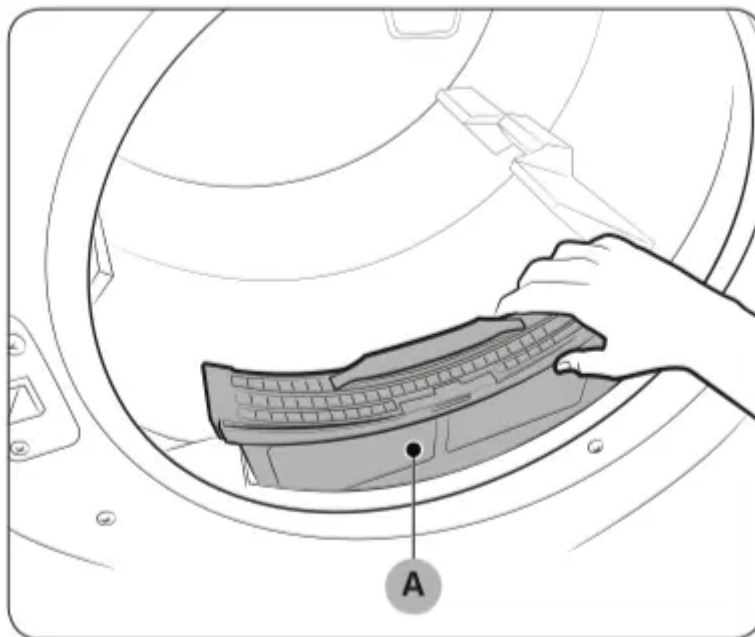
Here are a few things you should know before starting your dryer.

### Sort and load

- Put one wash load in the dryer at a time.
- Do not mix heavy and lightweight items together.
- To improve drying efficiency for one or two items, add a dry towel to the load.
- For best results, untangle items before inserting them into the dryer.
- Overloading reduces the tumbling action, resulting in uneven drying and wrinkling.
- Unless recommended on the care label, do not dry woolens or fiberglass items.
- Avoid drying unwashed items.
- Do not dry items soiled with oil, alcohol, gasoline, etc.

### Functional prerequisite

#### Lint filter



To prevent a risk of fire, make sure to clean the lint filter before or after every load.

1. Turn off the dryer.
2. Open the door, and pull out the lint filter (A) from inside the tumbler.
3. Open the lint filter by separating it at the top. Remove the lint that has accumulated, and then clean the lint filter.

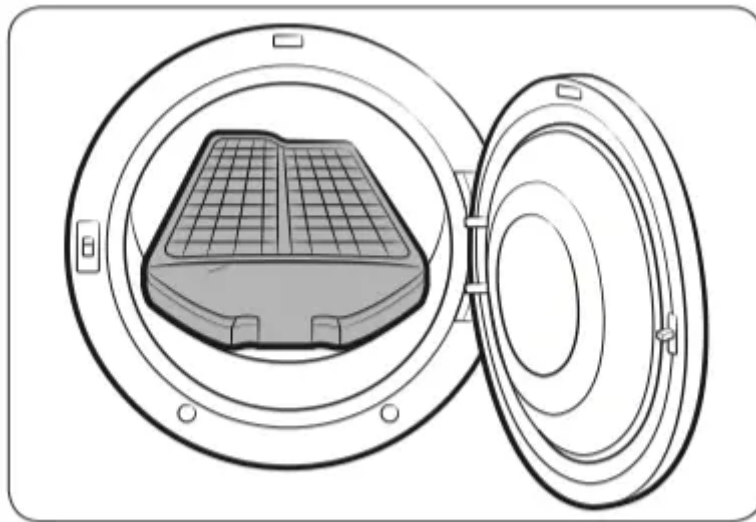
4. Close the lint filter, reinsert the lint filter into the dryer, and then close the dryer door.

### CAUTION

- Do not operate the dryer without the lint filter in place.
- Do not use a damaged or broken lint filter. This may reduce performance and/or cause fire.

### Rack Dry (applicable models only)

Some models come with a drying rack which is inserted into the drum at the factory. If your model came with a drying rack, remove the rack from the drum before you use the dryer for the first time. To remove the rack, pull the rack straight up, and then take it out of the drum. Remove the drying rack from its packaging and store the rack for later use.



If a drying rack is not provided, you can purchase it at a local Samsung service center. (Part Code : DC61-02705A) To use the drying rack, follow these steps:

1. Insert the drying rack (A) inside the tumbler with the filter handle to the front.
2. Insert the rear legs of the drying rack into the recessed areas of the rear wall, and then press down the middle of the drying rack to secure it in place.
3. Put items to dry on the rack. Make sure to leave space between the items for air flow.
4. Press Rack Dry, and then select the drying time.
5. When the items are dry, remove the them from the dryer, and then remove the drying rack.

### Drying rack drying suggestions

Item	Cycle settings
Washable sweaters (block to shape and lay flat on rack)	TIME DRY with the Extra Low temperature setting
Stuffed toys (cotton or polyester fiber-filled)	
Stuffed toys (foam or rubber-filled)	AIR FLUFF
Foam rubber pillows	
Sneakers	

**WARNING**

- Make sure to unpack the drying rack before using it. Otherwise, the dryer can be damaged or its performance diminished.
- Drying foam rubber, plastic, or rubber on a heat setting may damage the items and create a fire hazard.

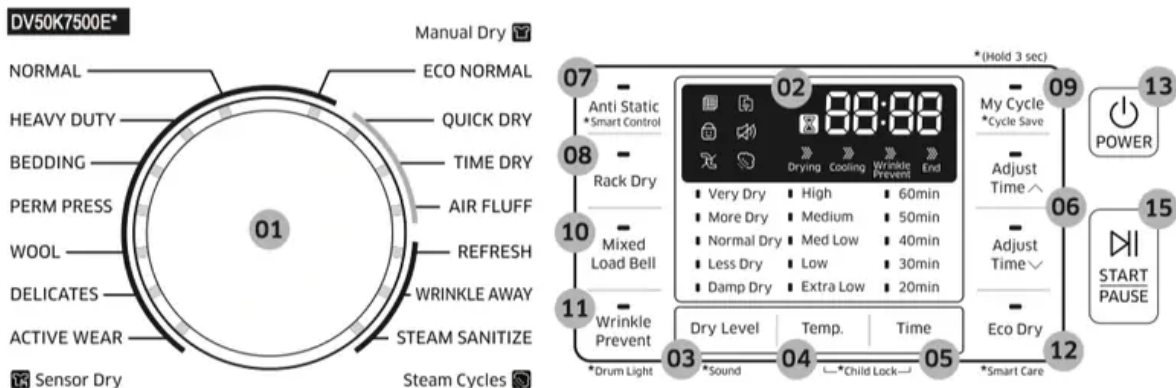
## Operations

**WARNING**

To reduce the risk of fire, electric shock, or injury, read the “Safety information“ before operating this appliance.

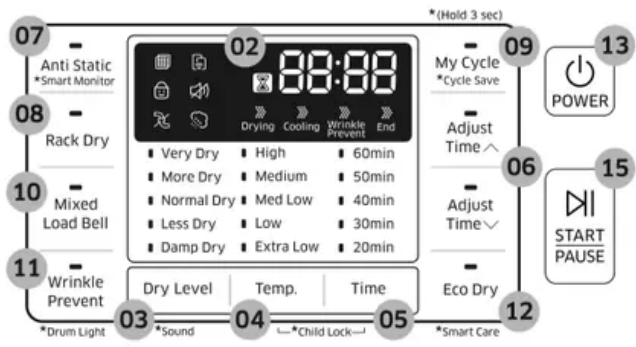
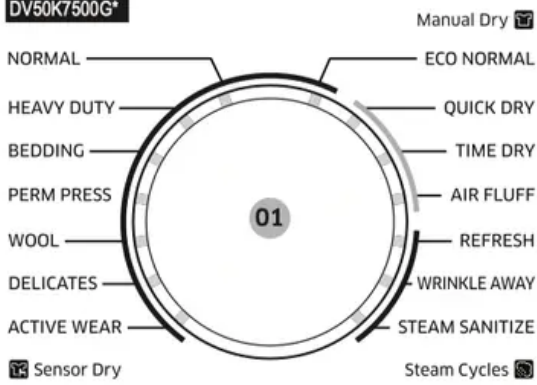
### Feature panel



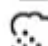



#### Electric models





# Gas models

DV50K7500G\*



<p><b>01 Cycle Selector</b></p>	<p>Turn the Cycle Selector to select the desired cycle. The indicator by the cycle name lights up.</p> <ul style="list-style-type: none"> <li>• Sensor Dry cycles: The dryer senses the internal humidity and uses it to determine the drying time.</li> <li>• Manual Dry cycles: The drying time is fixed.</li> <li>• Steam cycles: The dryer sprays water into the drum to deodorize clothes and reduce static electricity and wrinkles.</li> </ul>
<p><b>02 Digital Graphic Display</b></p>	<p>Displays all cycle information, including the cycle time, information code, and operating status.</p> <ul style="list-style-type: none"> <li>•  Filter Check</li> <li>•  Child Lock</li> <li>•  Steam</li> <li>•  Vent Sensor</li> <li>•  Smart Control (Smart Monitor)</li> <li>•  Sound</li> </ul>
<p><b>03 Dry Level</b></p>	<p>The Dry Level button serves two purposes.</p> <p>Use 1: Press Dry Level to select a dry level. This is available only with the Sensor Dry cycles.</p> <ul style="list-style-type: none"> <li>• Larger or bulkier loads may require Very Dry or More Dry for complete dryness.</li> <li>• Less Dry is best suited for lightweight fabrics or for leaving some moisture in the clothing at the end of the cycle.</li> <li>• Damp Dry is designed to partially dry items. Use for items that lay flat or hang to dry.</li> </ul> <p><b>NOTE</b></p> <p>This option is not available with: WOOL, ACTIVE WEAR, and STEAM SANITIZE.</p>

	<p>Use 2 (DV50K7500E(G)*): Press and hold Dry Level for 3 seconds to turn off the dryer's notification beeps and melodies. To unmute the dryer, press and hold again for 3 seconds.</p> <p><b>NOTE</b></p> <p>The mute function remains active even after you restart the dryer.</p>
<p><b>04 Temp.</b></p>	<p>Press Temp. to change the temperature of the current cycle.</p> <ul style="list-style-type: none"> <li>• High: For sturdy cottons or those labeled Tumble Dry.</li> <li>• Medium: For permanent press, synthetics, lightweight cottons, or items labeled Tumble Dry Medium.</li> <li>• Med Low: For heat lower than Medium. Use to dry synthetic or washable knit fabrics.</li> <li>• Low: For heat sensitive items labeled Tumble Dry Low or Tumble Dry Warm.</li> <li>• Extra Low: Provides the lowest heated drying temperature possible.</li> </ul>
<p><b>05 Time</b></p>	<p>Press Time to select a drying time for the selected cycle. This is available only with TIME DRY, QUICK DRY, AIR FLUFF, and WRINKLE AWAY.</p> <p>This button is not available for Sensor Dry cycles because exact drying times are determined by fluctuating humidity levels.</p>
<p><b>06 Adjust Time</b></p>	<p>You can change the set time for the selected cycle. This is available only with TIME DRY, QUICK DRY, AIR FLUFF, and WRINKLE AWAY. To change the cycle time, press Adjust Time  or Adjust Time  until the desired time is displayed.</p>
<p><b>07 Anti Static (*Smart Cotrol, *Smart Monitor)</b></p>	<p>Anti Static reduces static electricity that occurs from clothing friction. This is done by spraying steam into the drum in a later stage of the drying cycle.</p> <p><b>Remote control</b></p> <p>After you have inserted the Smart Home Adapter and connected the dryer to your home network using the Samsung Smart Home app, you can control the dryer remotely. To begin, press and hold Smart Control (Smart Monitor) for 3 seconds. The Smart Control (Smart Monitor) indicator blinks. The dryer enters the waiting for remote commands mode For more information, visit the Samsung Smart Home website.</p>



	<p><b>NOTE</b></p> <p>The Anti Static function is only available with NORMAL, HEAVY DUTY, PERM PRESS, DELICATES, and TIME DRY.</p>
<b>08 Rack Dry (DV50K7500*)</b>	Rack Dry is available in the TIME DRY cycle. Temperature will be set to Extra Low only. See “Rack Dry (applicable models only)” on page 37 for details.
<b>09 My Cycle</b>	Choose your favorite cycle including the cycle time, temperature, and dry level. See “My Cycle” for details.
<b>10 Mixed Load Bell</b>	<p>The Mixed Load Bell notifies you when the average dry level in a load is damp dry (80 % dried). This lets you take items that you don't want fully dried or that dry quickly out of the dryer early while letting others continue to dry.</p> <p>You can select this option in all Sensor Dry cycle except for WOOL, ACTIVE WEAR, and STEAM SANITIZE. Available dry levels are Normal Dry, More Dry, and Very Dry.</p>
<b>11 Wrinkle Prevent</b>	<p>The Wrinkle Prevent button serves two purposes.</p> <p><b>Use 1:</b> Wrinkle Prevent provides approximately 180 minutes of intermittent tumbling in unheated air at the end of the cycle to reduce wrinkling. Press Wrinkle Prevent to activate this feature. The load is dry and can be removed at any time during the Wrinkle Prevent cycle.</p> <p><b>Use 2 (DV50K7500E(G)*):</b> Press and hold Wrinkle Prevent for 3 seconds to turn on the drum light while the dryer is running. To turn off the drum light, press and hold again for 3 seconds.</p> <p><b>NOTE</b></p> <p>After 2 minutes of inactivity, the drum light automatically turns off.</p>
<b>12 Eco Dry</b>	<p>This function is available with Normal and Time Dry.</p> <p>With the Eco Dry activated, drying takes a longer time but power consumption is reduced.</p> <p>The drying time can be extended by up to 3 times normal depending on the temperature and load. The Eco Dry function is enabled by default.</p>
<b>13 POWER</b>	Press to turn on/turn off the dryer.

<p><b>14 Sound</b> <b>(DV45K6200E(G)*,</b> <b>DV45K6500E(G)*</b></p>	<p><b>Use 1:</b> Press Sound to turn on or off the dryer's notification beeps and melodies.</p> <p><b>Use 2:</b> Press and hold Sound for 3 seconds to turn on the drum light while the dryer is running. To turn off the drum light, press and hold again for 3 seconds.</p> <p><b>NOTE</b></p> <p>This function remains active even after you restart the dryer.</p>
<p><b>15 START/PAUSE</b></p>	<p>Press and hold to start operation or press to stop operation.</p>

**NOTE** Extremely tangled items finished by the washer may degrade the drying efficiency or cause the door to open. We recommend that you untangle the items before drying. Do not put objects on the dryer, especially on the feature panel.

**CAUTION** Do not spray water onto the feature panel. This may cause a system failure.

### Simple steps to start

1. Press POWER to turn on the dryer.
2. Turn the Cycle Selector to select a cycle.
3. Change the cycle settings (Dry Level, Temp. and Time) as necessary.
4. Optionally, you can activate options available by pressing the relevant button (Anti Static, Drum Light, Mixed Load Bell, Wrinkle Prevent, and/or Eco Dry).
5. Press and hold START/PAUSE. The dryer indicator turns on with an estimated cycle time on the display.

### To change the cycle during operation

1. Press START/PAUSE to stop operation.
2. Select a different cycle.
3. Press and hold START/PAUSE to start new cycle.

## Cycle overview



Cycle	Description
<b>ECO NORMAL</b> (DV45K6500E(G)*, DV50K7500E(G)*)	For reducing energy usage. This cycle adjusts the cycle time and temperature for increased efficiency.
<b>NORMAL</b>	For most fabrics including cottons and linens.  If Normal is selected, the Eco Dry function is enabled by default. For more information, see Eco Dry in the “Feature panel” section.
<b>HEAVY DUTY</b>	For drying items made out of heavy fabrics, such as jeans, corduroys, or work clothes, with high temperature heat.
<b>BEDDING</b>	For bulky items such as blankets, sheets, and comforters.
<b>PERM PRESS</b>	Dry wrinkle-free cottons, synthetic fabrics, knits, and permanent press fabrics automatically.
<b>WOOL (DV45K6500E(G)*, DV50K7500E(G)*)</b>	For machine washable and tumble dryable wool only.
<b>DELICATES</b>	For heat-sensitive items at a low drying temperature.
<b>ACTIVE WEAR</b>	For exercise wear and outdoor wear such as sports jerseys, training pants, water-repellent jackets, and other performance clothing. Thick fabrics like a zipper or velcro closure of a jacket, or training socks may not be completely dried.
<b>QUICK DRY</b>	A quick drying cycle that runs for 30 minutes
<b>TIME DRY</b>	You can specify a cycle time in minutes.  If Time Dry is selected, the Eco Dry function is enabled by default. For more information, see Eco Dry in the “Feature panel” section.
<b>AIR FLUFF</b>	Tumbles the load in room temperature air.

<b>REFRESH</b>	Use to smooth out wrinkles and reduce odors in loads of one to four items. With this cycle selected, a small amount of water is sprayed into the dryer drum after several minutes of tumbling with heat. Before removing the laundry, confirm that the laundry load is dry.
<b>WRINKLE AWAY</b>	For best results, load 2-3 items at once. You can extend the drying time by a minimum of 20 minutes, depending on the item type or load. Before removing the laundry, confirm that the laundry load is dry.
<b>STEAM SANITIZE</b>	Use to sanitize items by applying steam and high-temperature heat to the fabric. This cycle can make items soft and reduce smells. Confirm that the laundry load is wet or partially before starting this cycle.

### Drying guide

The best way to dry items is to follow the instructions on the care label. If no drying instructions are provided, see the following table for reference.



Cycle	Description
<b>Bedspreads &amp; Comforters</b>	<p>Follow the care label instructions or dry using Bedding.</p> <ul style="list-style-type: none"> <li>• Make sure the item is thoroughly dry before using or storing.</li> <li>• May require repositioning in the drum to ensure even drying.</li> </ul>
<b>Blankets</b>	<p>Use Normal and dry only one blanket at a time for best tumbling action.</p> <ul style="list-style-type: none"> <li>• Make sure blankets are is thoroughly dry before using or storing.</li> </ul>
<b>Curtains &amp; Draperies</b>	<p>Use Perm Press and the Medium temperature setting to help minimize wrinkling.</p> <ul style="list-style-type: none"> <li>• Dry curtains and draperies in small loads for best results and remove as soon as possible after the cycle is complete.</li> </ul>
<b>Cloth Diapers</b>	<p>Use Normal and the Medium temperature setting for soft, fluffy diapers.</p>
<b>Down-filled Items (jackets, sleeping bags, comforters, etc.)</b>	<p>Use Normal and the Medium temperature setting.</p> <ul style="list-style-type: none"> <li>• Add a couple of dry towels to absorb moisture and shorten drying time.</li> </ul>
<b>Foam Rubber (rug backs, stuffed toys, shoulder pads, etc.)</b>	<p>Do not dry on a heat setting. Use AIR FLUFF.</p> <p><b>WARNING</b></p> <p>Drying a rubber item with heat may damage it or cause a fire.</p>
<b>Pillows</b>	<p>Use Normal.</p> <ul style="list-style-type: none"> <li>• Add a couple of dry towels and a pair of clean sneakers to help the tumbling action and to fluff the pillows.</li> <li>• Do not dry kapok or foam pillows using a heated drying cycle. You can dry these items in the dryer only if you use AIR FLUFF.</li> </ul>

**Plastics (shower curtains, outdoor furniture covers, etc.)**

Use AIR FLUFF or TIME DRY and the Low or Extra Low temperature settings depending on the care label instructions.

## **WARNING**

Do not dry:

- Fiberglass items (curtains, draperies, etc.)
- Woolens, unless recommended on the label
- Items spotted or soaked with vegetable or cooking oils

## **Special features**

### **Child Lock**

Child Lock prevents children from playing with the dryer. When Child Lock is activated, all buttons except for the POWER button are disabled.

To activate/deactivate Child Lock, simultaneously press and hold Temp. and Time for 3 seconds.

## **NOTE**

Once Child Lock is activated, it will remain active even after you restart the dryer. If other buttons, except for the POWER button, do not respond, check the Child Lock indicator. If the indicator is on, follow the instructions above to turn Child Lock off.

## **Smart Care**

If the dryer displays an information code, you can use Smart Care to check the status of the dryer on a smartphone. To use Smart Care, you must have the Samsung Smart Care app installed on your smartphone.

**NOTE** Smart Care is optimized for Samsung Galaxy and Apple iPhones. (Not compatible with some models).

Download the Samsung Smart Care app from the Google Play Store or Apple App store (Search term: "Samsung Smart Washer/Dryer"), and install it on your smartphone.

If an information code appears on the dryer, follow these steps:

1. Press and hold Eco Dry for 3 seconds to activate Smart Care. The Smart Care indicator turns on.
2. Open the Smart Care app on your smartphone.
3. Put the smartphone's camera close to the display of the dryer. The app automatically recognizes the information code, and displays suggestions on your smartphone.

4. If the smartphone fails to recognize the information code more than twice, type the information code manually into the Smart Care app.

### **CAUTION**

- If light is reflected on the display of the dryer, the smartphone may not recognize the information code.
- If you hold the smartphone at an angle to the dryer's display, the smartphone may not recognize the information code. For best results, hold the smartphone so that the front of the panel and the smartphone are parallel or nearly parallel.
- After you use this function, the dryer will delete the record of the information code from its code log.

### **Sound On/Off**

To turn off the dryer's notification beeps and melodies, press and hold Dry Level for 3 seconds (DV50K7500\*) or press Sound (DV45K6500\*, 6200\*).

To unmute the dryer, press and hold Dry Level again for 3 seconds (DV50K7500\*) or press Sound (DV45K6500\*, 6200\*)

**NOTE** This function remains active even after you restart the dryer.

### **My Cycle**

You can create your own cycle that contains your preferred settings, and use it at your convenience.

1. Turn the Cycle Selector to select a cycle. The cycle indicator turns on.
2. Set or change the settings (Dry Level, Temp., Time, etc) and/or options as necessary. Each corresponding indicator blinks.
3. Press and hold My Cycle for 3 seconds. The dryer stores the selected cycle with its settings.

To use My Cycle, press My Cycle.

**NOTE** Wrinkle Prevent is not available with My Cycle.

## **Samsung Smart Home (applicable models only)**

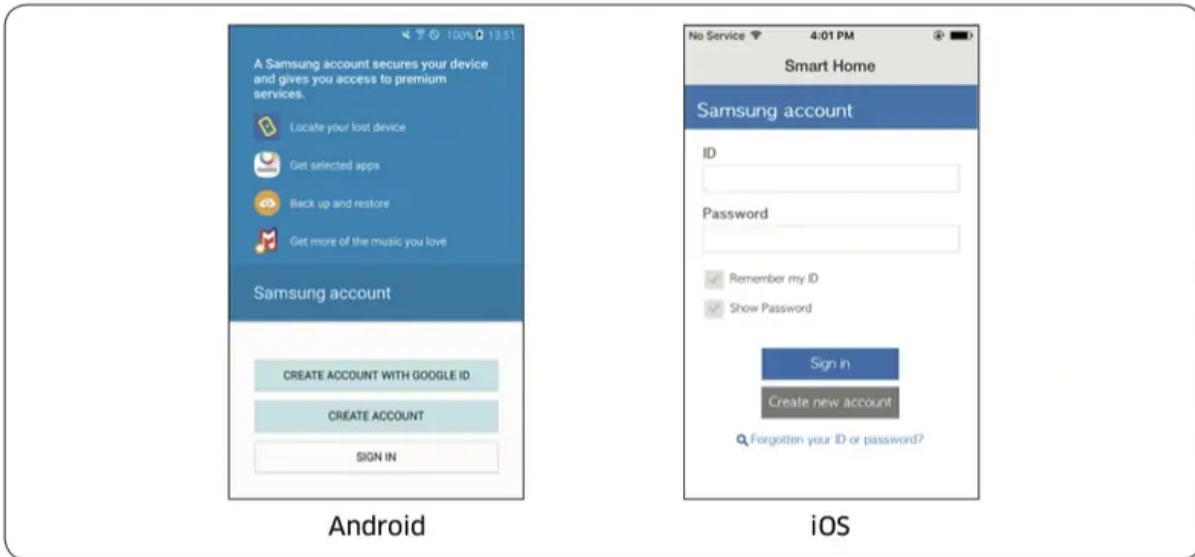
### **Installation**

Visit the Google Play Store, Galaxy Apps, or Apple App Store and search for "Samsung Smart Home". Download and install the Samsung Smart Home app provided by Samsung Electronics to your smart device.

**NOTE**

- The Samsung Smart Home app is designed for Android 4.0 (ICS) or higher, or iOS 7.0 or higher, and is optimized for Samsung smartphones (Galaxy S and Galaxy Note series). On other smartphone models, some functions may operate differently.
- For improved performance, the Samsung Smart Home app is subject to change without notice.

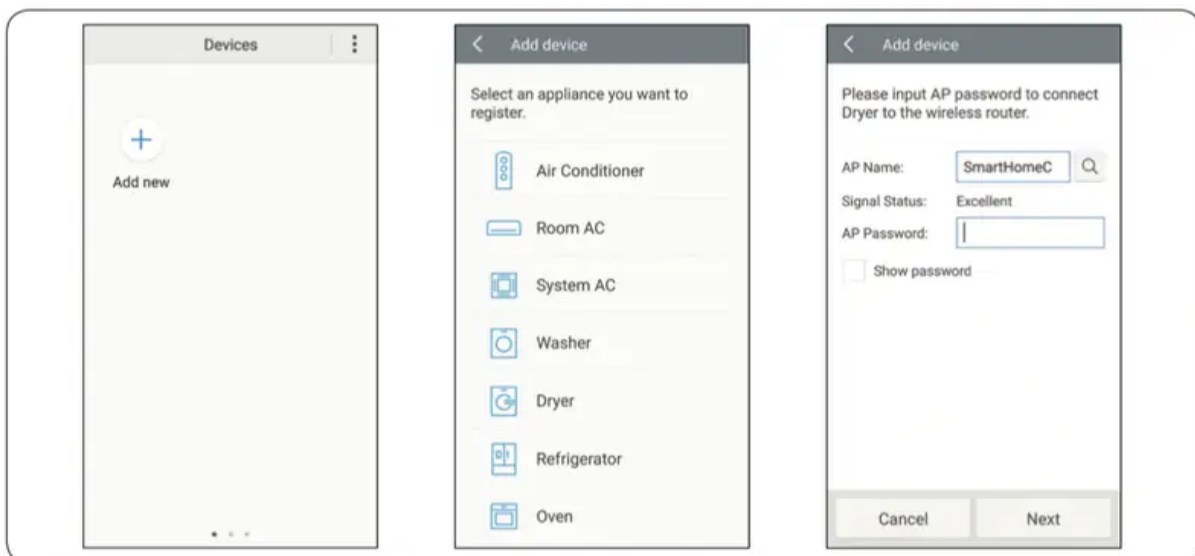
### Samsung account



You are required to register your Samsung account to use the app. If you don't have a Samsung account, follow the app's onscreen instructions to create a free Samsung account.

### Getting started

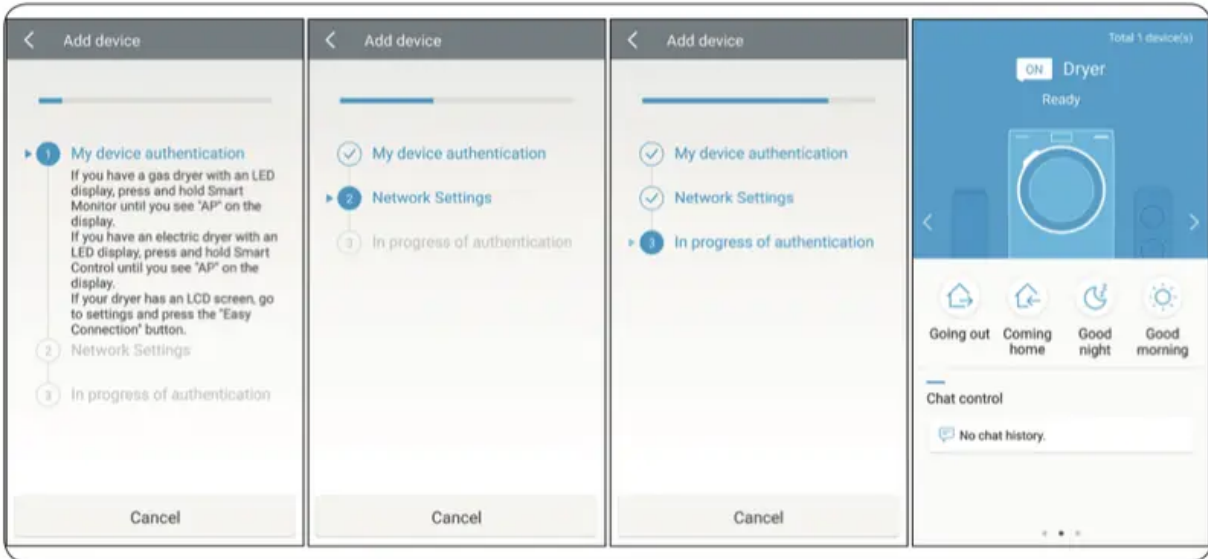
1. Insert the Smart Home Adapter into the Smart Home Adapter port of your dryer.
2. Run the Samsung Smart Home app and log in with your Samsung account. iPhone users are required to provide the login information each time they access the app.



3. Access Device > the plus (+) icon, and then tap Dryer.

4. Follow the onscreen instructions to provide the necessary information about the router, and then tap Next.

5. Press and hold Smart Control (Smart Monitor) on the dryer for more than 5 seconds until the “AP” message appears on the display. Your dryer is registered with the app.



6. Once your dryer is registered properly, the App will show this message.

“Congratulations! Your dryer has been added to your Smart Home. Please complete the setup by restarting your dryer.


You may then remotely control your dryer by turning on Smart Control.

\* The remote control function is only available with electric dryers.”

7. When the device registration is complete, the dryer icon will appear in the Samsung Smart Home app.

8. Please complete the setup by restarting your dryer.

9. Press and hold Smart Control (Smart Monitor) on the washer for more than 3 seconds.

The Smart Control (Smart Monitor) indicator  will light up on the dryer.

## NOTE

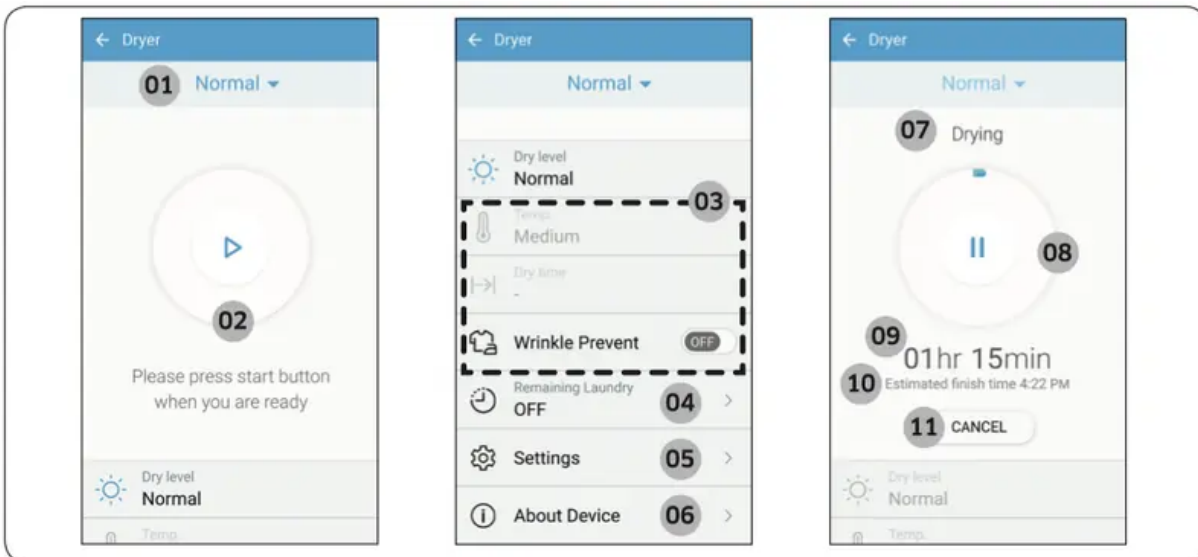
Some options or settings of the dryer may not be available for remote control.

For safety reasons, Smart Control will be disabled if the Child Lock is activated. To use Smart Control, make sure you deactivate the Child Lock first.

## Key features

You can register Samsung smart home appliances on the Samsung Smart Home server for remote access.

## Menu overview

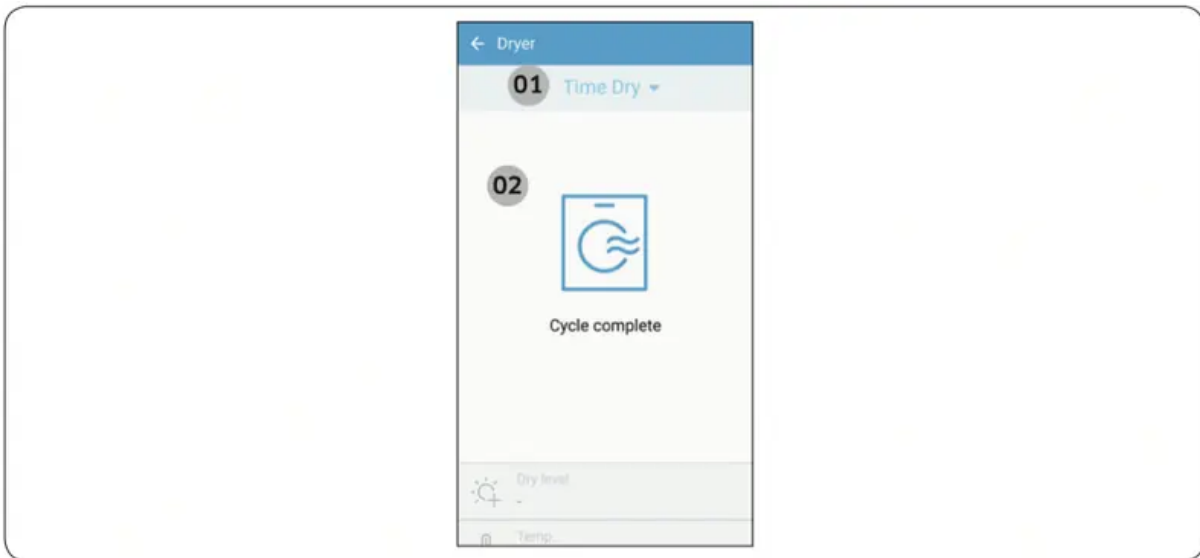


For improved performance, the content and design of the app is subject to change without notice.

<p><b>01 Current cycle</b></p>	<p>Tap to select a desired cycle.</p>
<p><b>02 Start/Pause</b></p>	<p>With Smart Control (Smart Monitor) enabled on the dryer, you can remotely start an operation or pause an operation temporarily.</p>
<p><b>03 Options</b></p>	<p>You can set or adjust options remotely. Option default values and available setting values differ depending on the selected cycle.</p>
<p><b>04 Remaining Laundry (applicable models only)</b></p>	<p>If the dryer has laundry remaining in the drum after a cycle has finished, this function can notify you that laundry remains in the drum.</p> <p>To use, tap the Remaining Laundry icon to turn the function on, and then specify a notification interval.</p> <p>The function stays active for up to 12 hours. If you open the door, the function will be terminated and the machine turns off.</p>
<p><b>05 Settings</b></p>	<p>The Settings menu differs by model and is not available for all models.</p>

<b>06 About Device.</b>	<ul style="list-style-type: none"> <li>• Version: Displays the current version of the Dryer app.</li> <li>• Self Check (applicable models only): The dryer runs a self- diagnosis and displays an information code if it finds an issue to check.</li> </ul>
<b>07 Current Process</b>	The current process - Washing, Rinsing, etc. - is displayed.
<b>08 Progress</b>	The progress of the selected cycle is displayed in 1 % increments.
<b>09 Remaining Time</b>	The time remaining for the selected cycle is displayed for.
<b>10 Estimated Finish Time</b>	The estimated finish time is displayed.
<b>11 Cancel</b>	Tap to cancel the current cycle and return to the cycle selection screen.

When the cycle is complete:



<b>01 Finished Cycle</b>	Displays the cycle that has completed.
<b>02 Completion Message</b>	When the cycle is complete, the Dryer app displays a completion message.

For gas models, the Dryer app only serves as a monitoring device. You cannot manipulate any of the controls available on the app.

## Maintenance


Keep the dryer clean to prevent decreased performance and to lengthen its life.


### WARNING

The control board and inlet valve are intentionally not grounded and may present a risk of electric shock only during servicing.

Service personnel - Do not contact these parts while the dryer is energized.

### Vent sensor

The dryer features a vent sensor that detects and notifies you when it is time to clean the ductwork. The  indicator lets you know the status of the duct.

Level	 Indicator	Status	Action
0	Off	The ductwork is not clogged.	
1	On	<ul style="list-style-type: none"> <li>The duct or lint filter is clogged.</li> <li>The pressure applied to the duct is high because the duct is too long or bent.</li> </ul>	<ul style="list-style-type: none"> <li>Check the lint filter or duct and clean if necessary.</li> <li>Check the duct connections and shorten or straighten the duct if necessary.</li> </ul>
2	Blinking	<ul style="list-style-type: none"> <li>The duct or lint filter is severely clogged.</li> <li>The pressure applied to the duct is very high because the duct is too long or bent.</li> </ul>	<ul style="list-style-type: none"> <li>Check and clean the lint filter or duct and make sure they are not clogged.</li> <li>Check the duct connections and shorten or straighten the duct work.</li> </ul>

If the dryer is in the Level 2 state, the indicator  blinks for 3 hours after the completion of the current cycle. If you press POWER or open the door, the dryer powers off immediately.

### NOTE

- For duct installation, see “Exhaust ducting guide” on page 28 and “Ducting requirements” on page 14.
- The dryer may keep running even if the duct is clogged, but the drying time will be extended.
- If the indicator turns on for the first time and is solid (not blinking), check and clean the lint filter and/or duct.
- If the indicator turns on again later, it is because the duct is installed or connected with some restrictions (it’s too long or has too many bends). This is not a system failure. However, drying time may be extended or the drying performance may be degraded.

## **Cleaning**

### **Feature panel**

- Clean with a soft, damp cloth. Do not use abrasive substances.
- Do not spray liquid cleaning agents directly on the display of the dryer.
- Some laundry pre-treatment soil and stain removers may damage the feature panel.
- When using liquid cleaning agents, apply them to the cleaning cloth. Do not apply them directly to the dryer. Wipe up any spills or overspray immediately.

### **Tumbler**

- Remove any stains from the tumbler with an all-purpose cleaner.
- Tumble old towels or rags to remove any remaining stains or cleaning substances. Stains may still be visible, but will not affect subsequent loads.

### **Stainless steel tumbler**

To clean the stainless steel tumbler, use a damp cloth with a mild, non-abrasive cleaner suitable for easily marred surfaces. Remove cleaner residue and dry with a clean cloth.

### **Dryer exterior**

- Clean with a soft, damp cloth. Do not use abrasive substances.
- Protect the surface from sharp objects.
- Do not place any heavy or sharp objects or a detergent container on the dryer. They can scratch or damage the top cover of the dryer.
- The dryer has a high-gloss finish on the entire surface. Be careful not to scratch or damage the surface.

### **Exhaust system**

- Check and clean the exhaust system on a yearly or regular basis to maintain optimum performance.

- The external exhaust hood must be cleaned more frequently to ensure proper air flow.

## Troubleshooting

### Checkpoints

If the dryer operates abnormally, first check the list of problems in the table below and try the suggested actions.

Problem	Action
<b>Does not run.</b>	<ul style="list-style-type: none"> <li>• Make sure the door is latched shut.</li> <li>• Make sure the power cord is plugged into a live electrical outlet.</li> <li>• Check your home's circuit breakers or fuses.</li> <li>• Press or tap START/PAUSE again if the door was opened during a cycle.</li> <li>• Clean the lint filter.</li> </ul>
<b>Does not heat.</b>	<ul style="list-style-type: none"> <li>• Check your home's circuit breakers or fuses.</li> <li>• Some cycles do not require heat. Check the selected cycle again.</li> <li>• For a gas dryer, make sure the gas supply is on.</li> <li>• Clean the lint filter and exhaust duct.</li> <li>• The dryer may have moved into the cool-down phase of the cycle.</li> </ul>
<b>Does not dry.</b>	<ul style="list-style-type: none"> <li>• Check all of the above, plus...</li> <li>• Make sure the exhaust hood outside your home can open and close freely.</li> <li>• Check the exhaust system for lint buildup. Ducting should be inspected and cleaned annually.</li> <li>• Use a 4" rigid metal exhaust duct.</li> <li>• Do not overload. 1 wash load = 1 dryer load.</li> <li>• Dry heavy items and light weight items separately.</li> <li>• Large, bulky items, such as blankets or comforters, may require repositioning to ensure even drying.</li> <li>• Make sure that your washer is draining properly and extracting adequate water from the load.</li> <li>• The load may be too small to tumble properly. Add a few towels and restart the dryer.</li> <li>• The load may be too large to tumble properly. Remove some items and restart the dryer.</li> <li>• Clean the lint filter.</li> </ul>



<p><b>Is noisy.</b></p>	<ul style="list-style-type: none"> <li>• Check the load for objects such as coins, loose buttons, nails, etc. Remove promptly.</li> <li>• It is normal to hear the dryer gas valve or heating element cycle on and off during the drying cycle.</li> <li>• Make sure the dryer is leveled properly as outlined in the installation instructions.</li> <li>• It is normal for the dryer to hum due to the high velocity of air moving through the dryer drum, fan, or exhaust system.</li> </ul>
<p><b>Dries unevenly.</b></p>	<ul style="list-style-type: none"> <li>• Seams, pockets, and other similarly heavy areas may not be completely dry when the rest of the load has reached the selected dryness level. This is normal. You can choose a higher dryness level or a cycle that involves a higher dryness level.</li> <li>• If one heavy item is dried with a light weight load, such as one towel with sheets, it is possible that the heavy item will not be completely dry when the rest of the load has reached the selected dryness level.</li> <li>• For the best drying results, dry heavy items and light weight items separately.</li> </ul>
<p><b>Has odors.</b></p>	<ul style="list-style-type: none"> <li>• Household odors from paint, varnish, strong cleaners, etc. may enter the dryer with the surrounding room air. This is normal as the dryer draws the air from the room, heats it, pulls it through the tumbler, and exhausts it outside.</li> <li>• When these odors linger in the air, completely ventilate the room before using the dryer.</li> <li>• Use a cycle featuring the Refresh function. If odors persist, wash and dry the items again.</li> </ul>
<p><b>Lint on clothes.</b></p>	<ul style="list-style-type: none"> <li>• Make sure the lint filter is cleaned before every load. For clothes that naturally build up lint, clean the filter during the cycle.</li> <li>• Some fabrics are lint producers (for example, a fuzzy white cotton towel) and they must be dried separately from clothes that are lint trappers (for example, a pair of black linen pants).</li> <li>• Divide larger loads into smaller loads for drying.</li> <li>• Check pockets thoroughly before drying, then dry clothes.</li> <li>• Remove lint inside the drum before drying a load.</li> </ul>



<p><b>Items still wrinkled after Wrinkle Prevent (Wrinkle Away, Wrinkle Release).</b></p>	<ul style="list-style-type: none"> <li>• Small loads of 1 to 4 items work best.</li> <li>• Load fewer items. Load similar-type items.</li> <li>• Take out the items immediately after drying is complete.</li> </ul>
<p><b>Water drips from the nozzle when the Steam cycles starts.</b></p>	<ul style="list-style-type: none"> <li>• This is steam condensation. The dripping water will stop after a short time.</li> </ul>
<p><b>Sprayed water is not visible during Steam cycles.</b></p>	<ul style="list-style-type: none"> <li>• Sprayed water is difficult to see when the door is closed.</li> </ul>
<p><b>Extended time.</b></p>	<ul style="list-style-type: none"> <li>• Sensor Dry automatically senses the moisture in the load and shuts the dryer off when the selected dryness level is reached.</li> </ul> <p>The drying time can change according to the type and amount of laundry. See the cycle chart for reference.</p>

If a problem persists, contact a local Samsung service center.



## Samsung Smart Home

Problem	Action
<p><b>I could not find “Samsung Smart Home” in the app market.</b></p>	<ul style="list-style-type: none"> <li>• The Samsung Smart Home app is available for smartphones that run Android 4.0 (ICS) or higher, or iOS 7.0 or higher.</li> </ul>
<p><b>The Samsung Smart Home app fails to operate.</b></p>	<ul style="list-style-type: none"> <li>• The Samsung Smart Home app is available for applicable models only.</li> <li>• The old Samsung Smart Dryer app cannot connect with Samsung Smart Home models.</li> </ul>
<p><b>The Samsung Smart Home app is installed but is not connected to my dryer.</b></p>	<ul style="list-style-type: none"> <li>• You must log into your Samsung account to use the app.</li> <li>• Make sure that your router is operating normally.</li> <li>• Make sure that the Smart Home Adapter is inserted properly.</li> <li>• If the Smart Control (Smart Monitor) indicator on the dryer’s display is off, this indicates that no network connection has been established. Use the Samsung Smart Home app to connect and register the dryer with your home network access point (AP).</li> </ul>
<p><b>Could not log into the app.</b></p>	<ul style="list-style-type: none"> <li>• You must log into your Samsung account to use the app.</li> <li>• If you don’t have a Samsung account, follow the app’s onscreen instructions to create one.</li> </ul>
<p><b>An error message appears when I try to register my dryer.</b></p>	<ul style="list-style-type: none"> <li>• The connection may fail due to the distance from your access point (AP) or electrical interference from the surrounding environment. Wait a moment and try again.</li> </ul>
<p><b>The Samsung Smart Home app is successfully connected to my dryer but does not run.</b></p>	<ul style="list-style-type: none"> <li>• Exit and restart the Samsung Smart Home app or unplug your router and then reconnect it.</li> <li>• Remove the Smart Home Adapter, and reconnect it properly. Then, try again.</li> </ul>

## Information codes

If the dryer fails to operate, you may see an information code on the display panel. To determine what you should do, check the list of codes in the table below, and then try the suggested actions.

Code	Action
<b>DC.</b>	Operating the dryer with the door open. <ul style="list-style-type: none"> <li>• Make sure the door is properly closed.</li> <li>• Make sure laundry is not caught in the door.</li> </ul>
<b>FC</b>	Invalid power source frequency <ul style="list-style-type: none"> <li>• Try restarting the cycle.</li> <li>• If this information code remains, contact a Samsung service center.</li> </ul>
<b>AC</b>	Electronic control problem (Invalid Communication). • Contact a Samsung service center.
<b>HC</b>	High temperature heating check <ul style="list-style-type: none"> <li>• Clean the lint filter.</li> <li>• If this information code remains, contact a Samsung service center.</li> </ul>
<b>9C1</b>	The electronic control needs to be checked. <ul style="list-style-type: none"> <li>• Check if power is supplied properly.</li> <li>• If the information code remains, contact a Samsung service center.</li> </ul>
<b>tC</b>	The Thermistor1 resistance is very low or high. <ul style="list-style-type: none"> <li>• Check for a clogged lint screen</li> <li>• Check if the vent system is restricted.</li> <li>• If this information code remains, contact a Samsung service center.</li> </ul>
<b>tC5</b>	The Thermistor2 resistance is very low or high. <ul style="list-style-type: none"> <li>• Check for a clogged lint screen.</li> <li>• Check if the vent system is restricted.</li> <li>• If this information code remains, contact a Samsung service center.</li> </ul>
<b>dF</b>	Incorrect door switch. <ul style="list-style-type: none"> <li>• Contact a Samsung service center.</li> </ul>



If any information code keeps appearing on the screen, contact a Samsung service center.

**Warning**

This content is compiled from multiple sources and is provided for reference purposes only. It may not be complete or fully applicable to all situations. If you are unable to resolve your issue, please contact the product manufacturer or an authorized service provider for official support.

---

Document generated by [ManualsFile](#)

