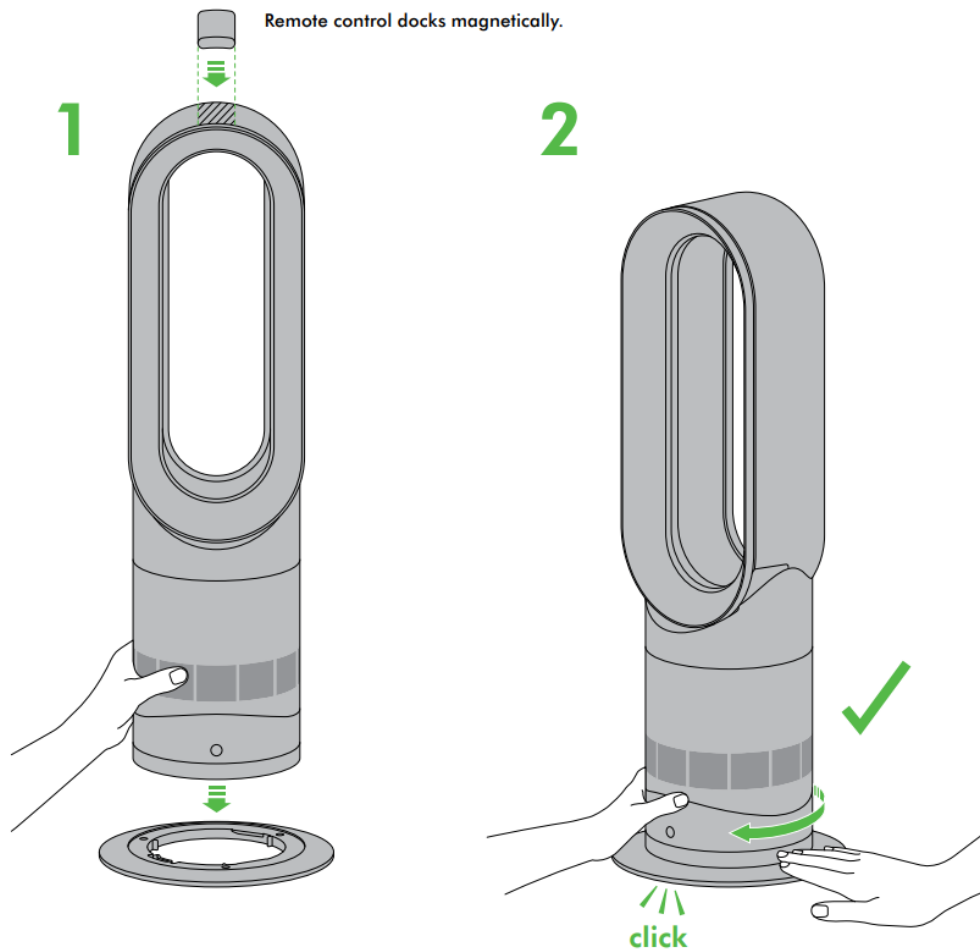


## ASSEMBLY

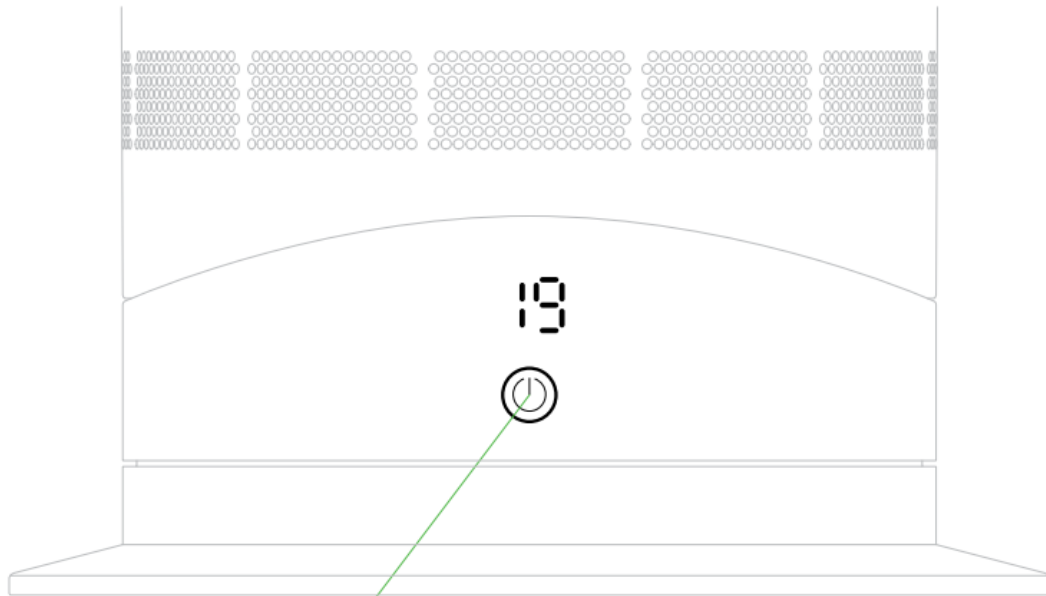


### Power

Each time the heating mode is selected, it conducts a short calibration cycle. Airflow will be automatically controlled during this cycle. Once the calibration cycle is complete, it will revert to the selected airflow speed.

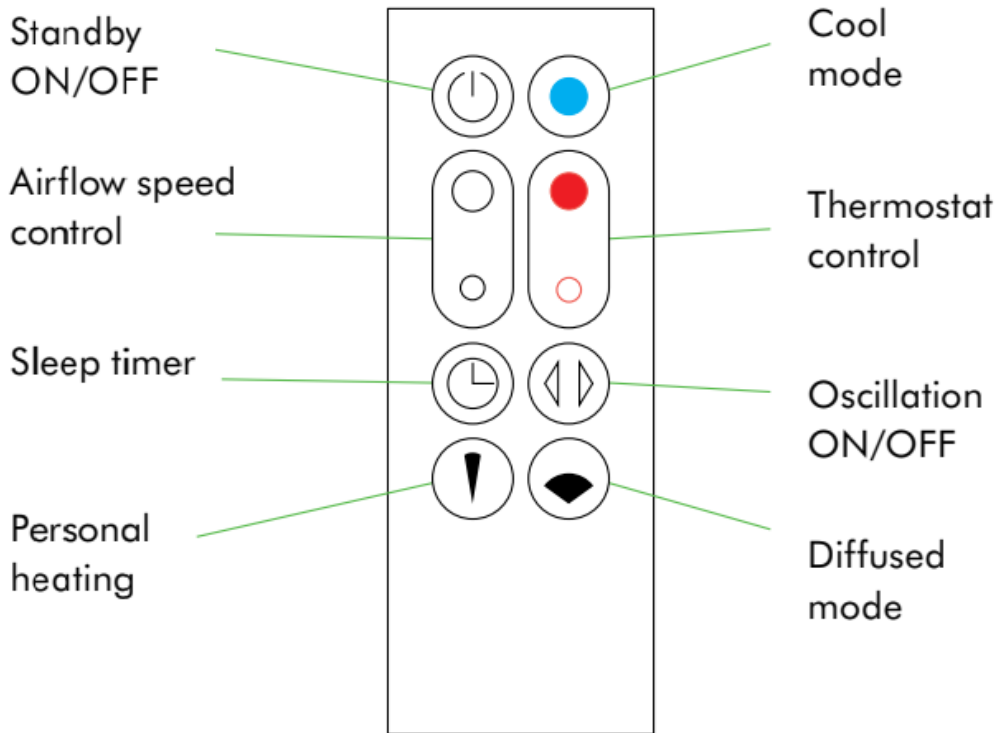
On first use, the appliance will default to a temperature 3°C higher than the detected room temperature. Thereafter, the appliance will remember the last target temperature set.

Select the desired room temperature. Pressing the large red button increases the target temperature by 1°C; the smaller red button decreases it by 1°C. The appliance will not operate in heater mode unless the target temperature is above the room temperature.



Press and hold the power button to run through the target temperatures.

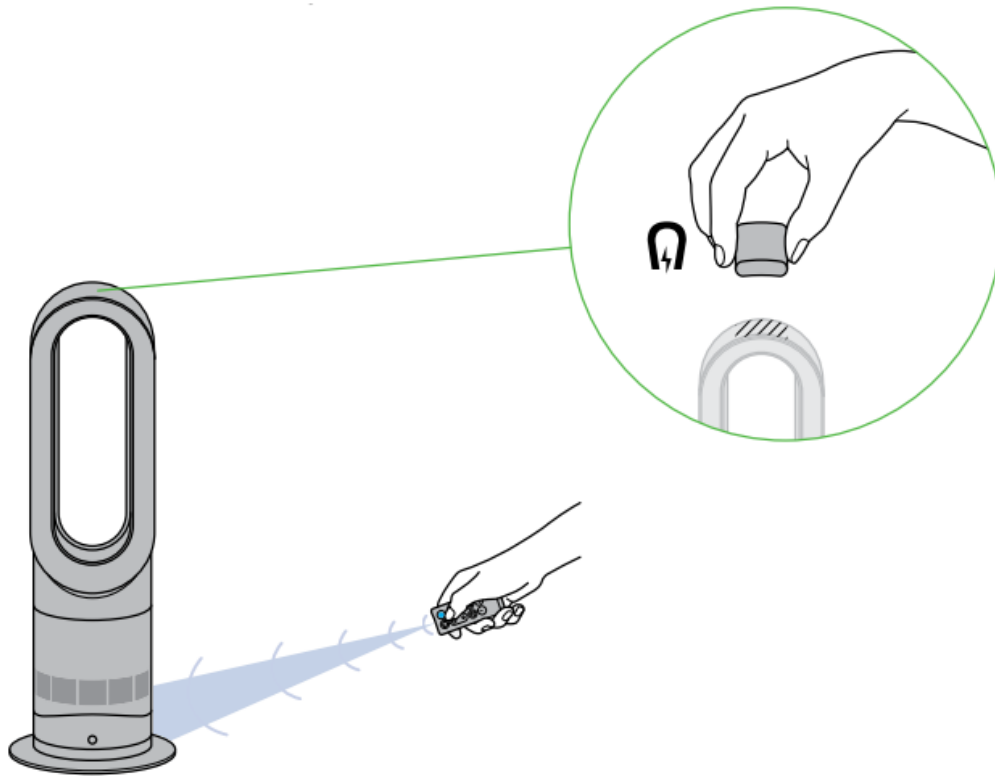
### Remote control



Remote control docks magnetically.



Attach the remote control to the top of the appliance with the buttons facing down.



To operate, point the remote control toward the front of the base.

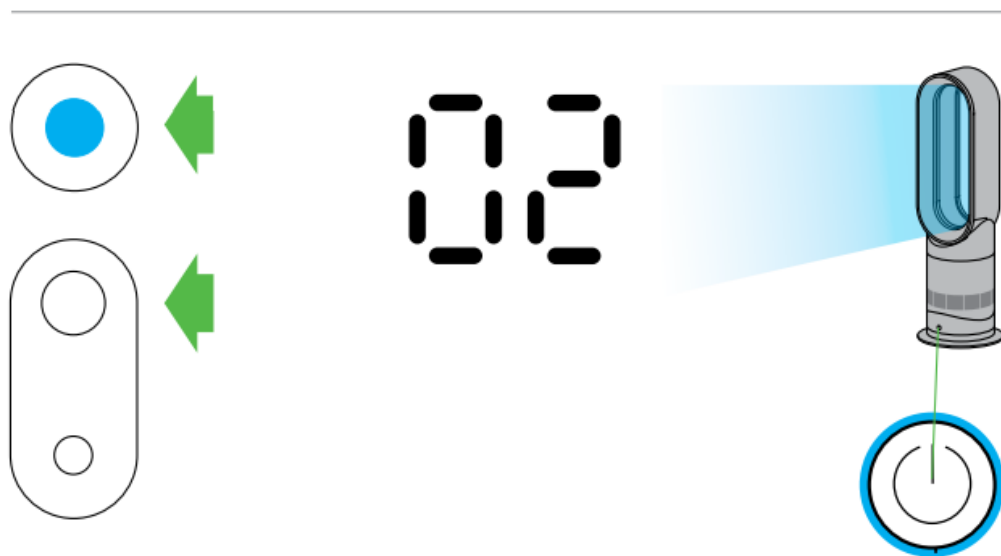
### Heating and cool modes



Heating mode



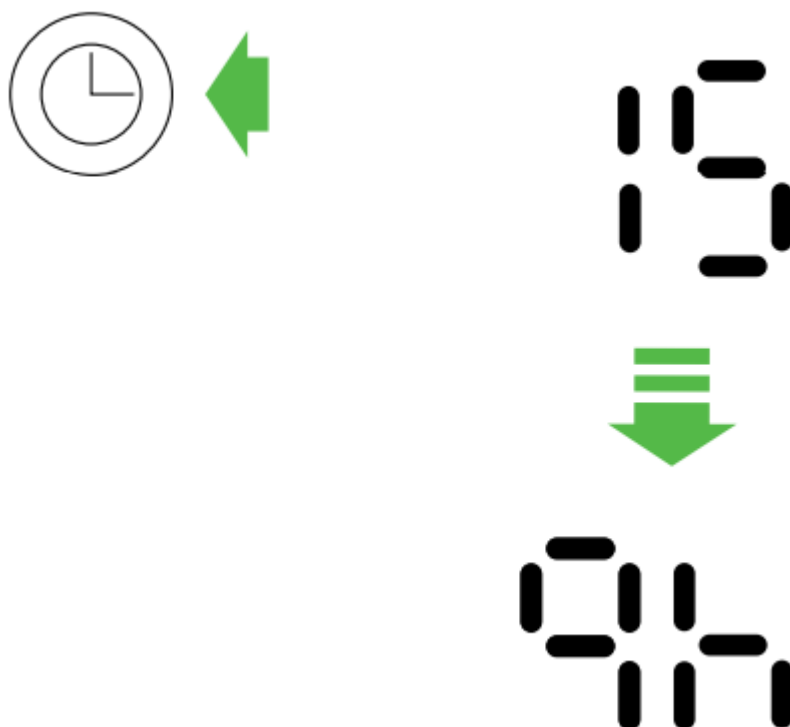
Press the red thermostat control button until the digital display shows the desired target temperature. The power button light will change from blue to red. The red circle will disappear when the target temperature has been reached.



### Cool mode

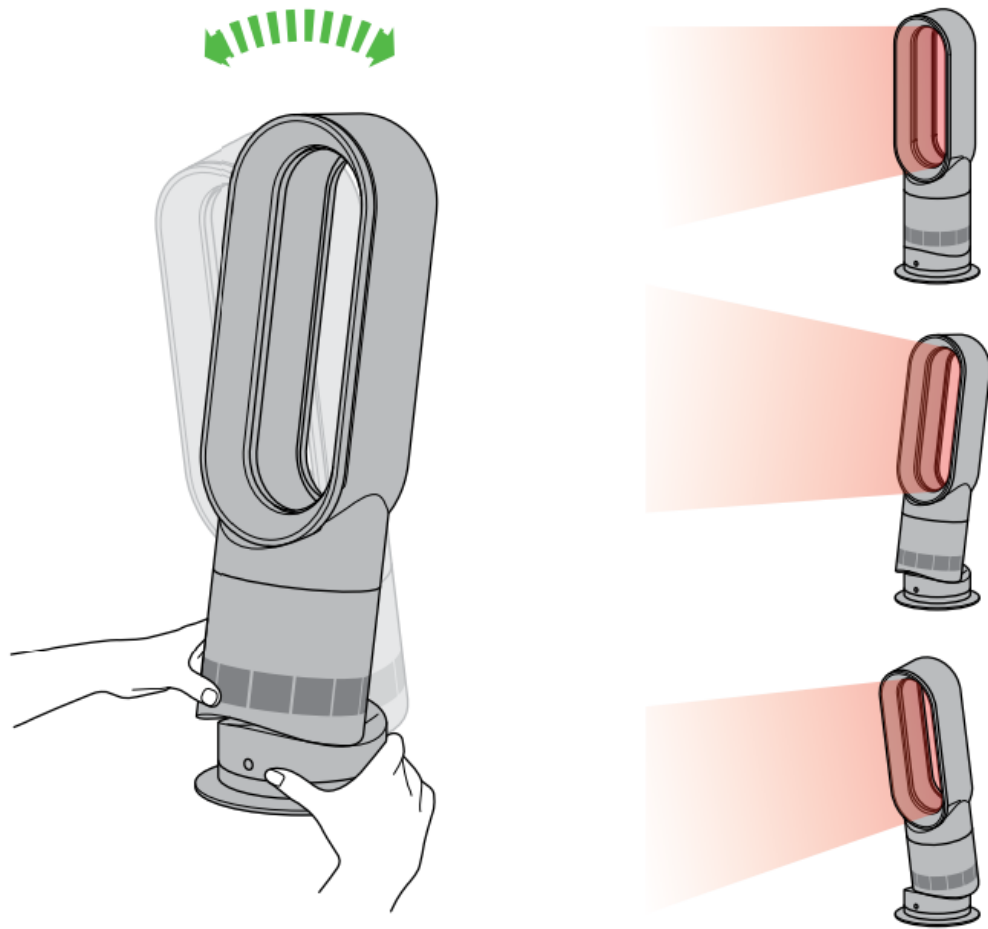
Press the blue thermostat control button to change the target temperature to 0°C. The power button light will change from red to blue. To adjust the airflow speed use the airflow control button.

## Sleep timer



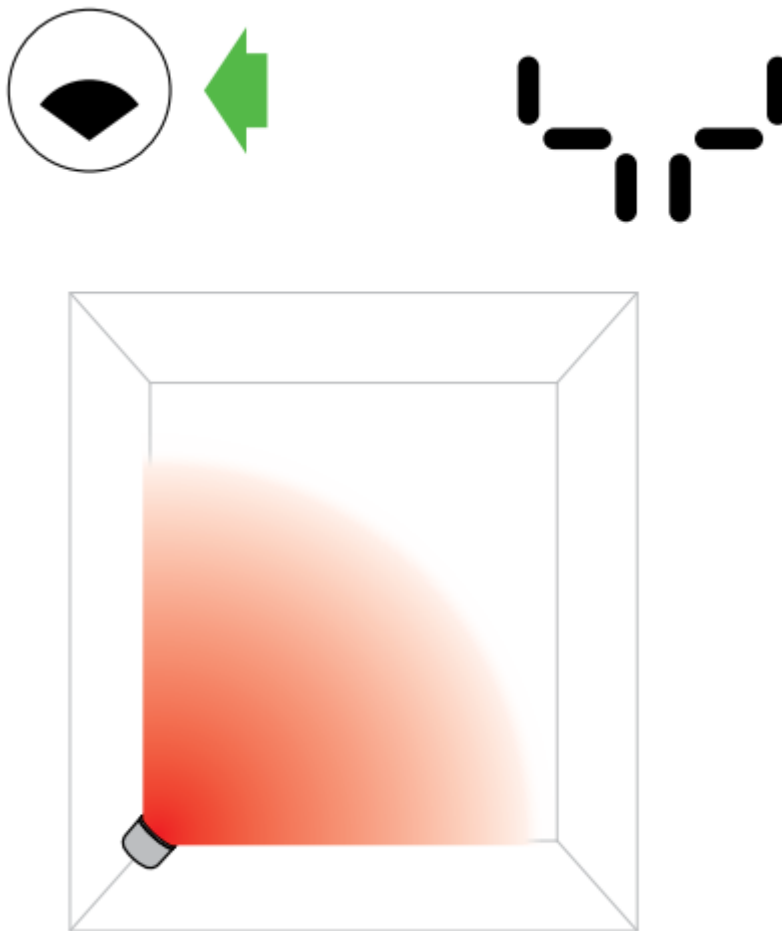
To set the sleep timer, press and hold the timer button to select the desired time. When time reaches zero, the appliance will go into standby mode. To cancel, reduce the time until two dashes appear

## Tilt function



Carefully hold the base and the main body. Tilt the amplifier forward or backward for the required airflow angle.

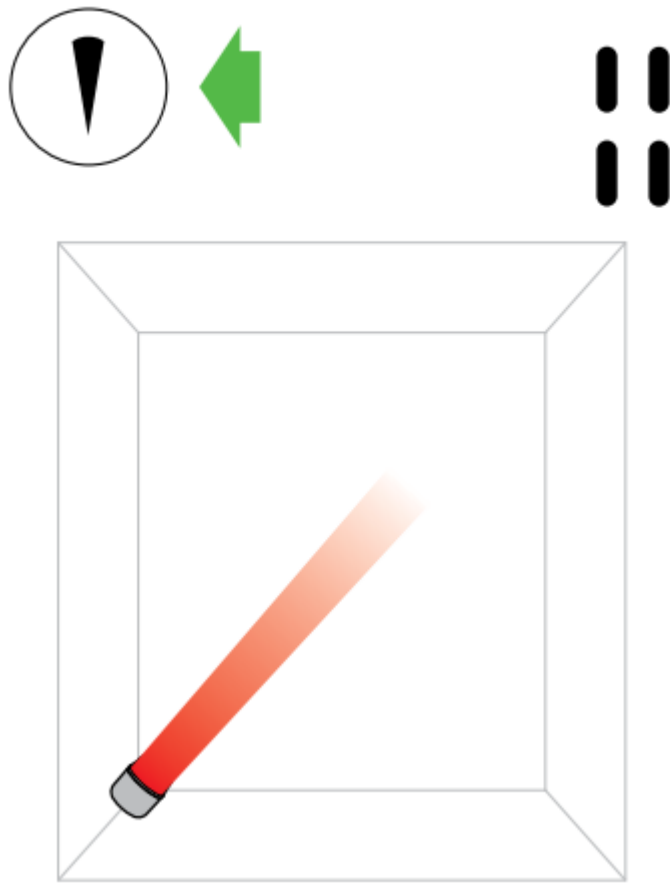
## Diffused and personal heating modes



### Diffused mode

Press the wide angle button to change from personal heating to whole room heating. Carefully hold the base and the main body. Tilt the amplifier forward or backward for the required airflow angle.

Heating and cool modes work in this mode.



### Personal heating

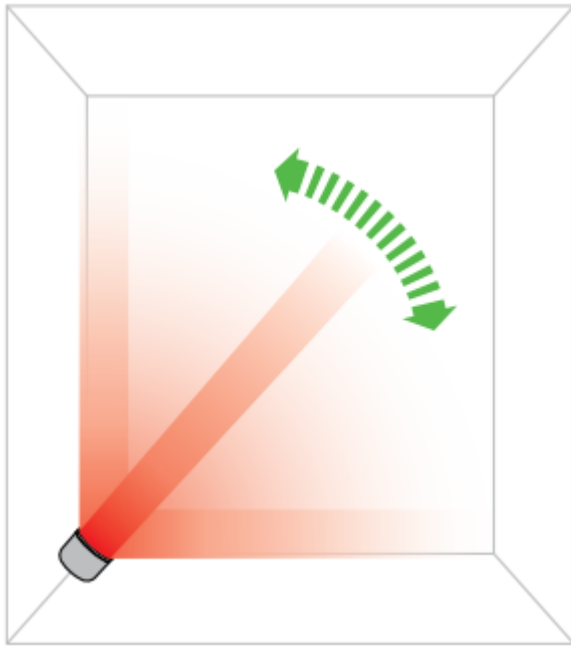
Press the narrow angle button to change from whole room heating to personal heating.

Heating and cool modes work in this mode.

### Oscillation and airflow speed control

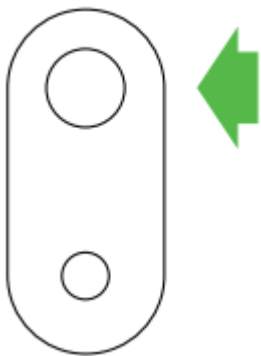


### Oscillation control

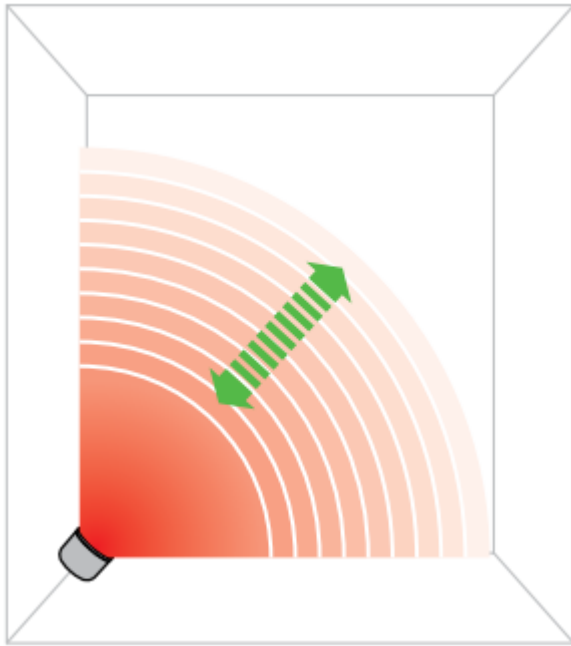


To start the appliance oscillating, press the oscillation control button.

To stop the appliance oscillating, press it again. The appliance will not oscillate when the control buttons are pressed.

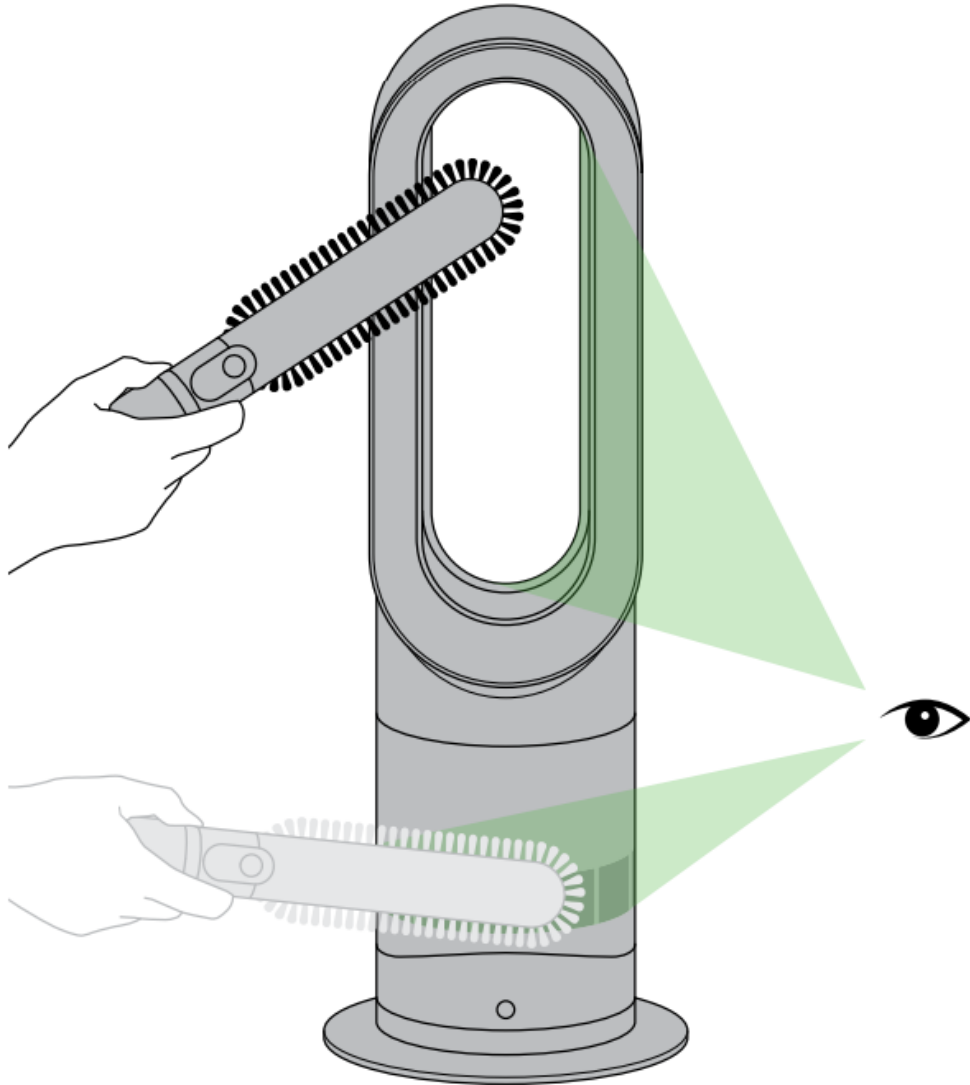


**Airflow speed control**



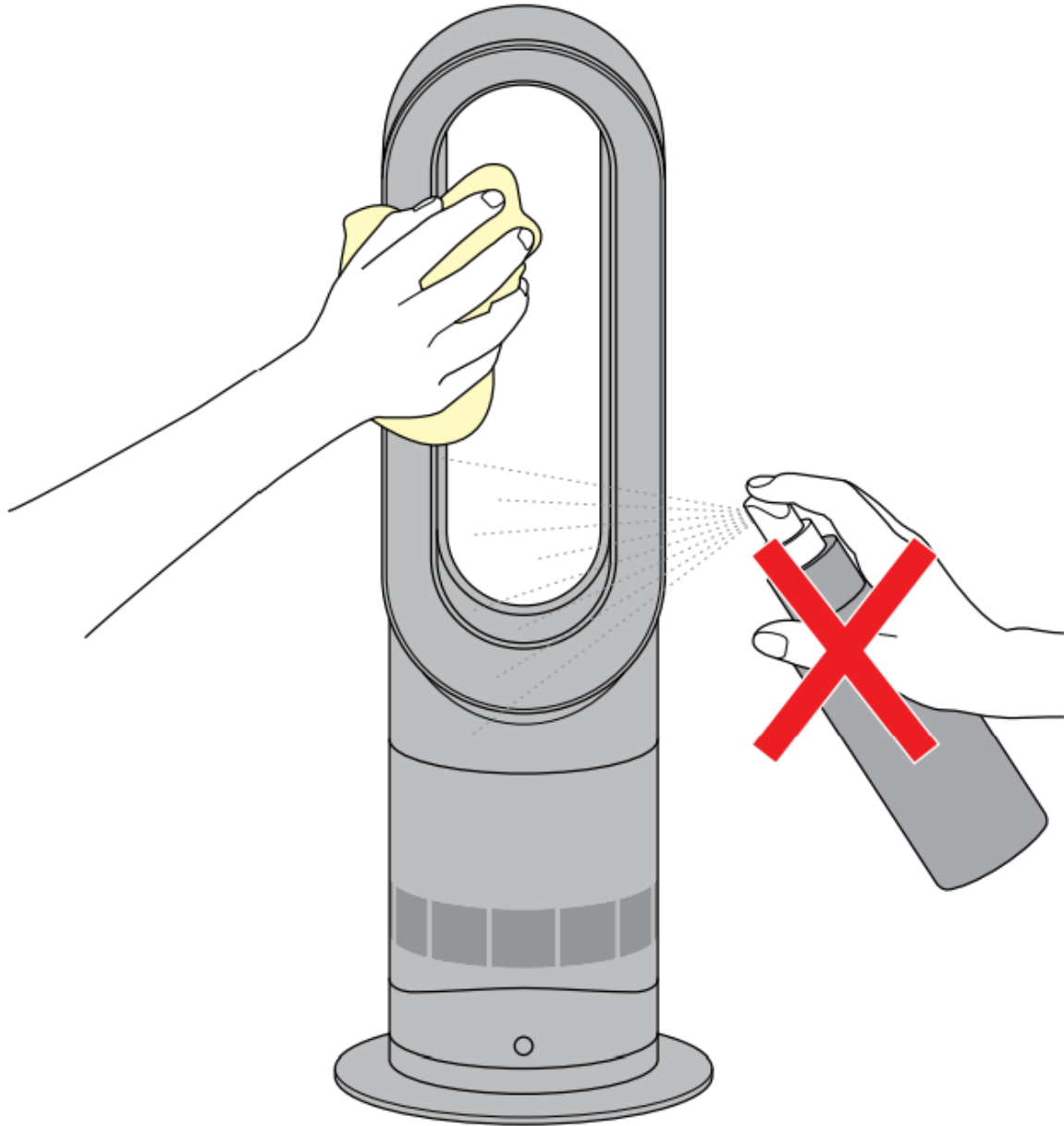
To change the airflow speed press the airflow control button. The digital display will show the new speed; after 3 seconds it will change back to the target temperature.

## Clearing blockages



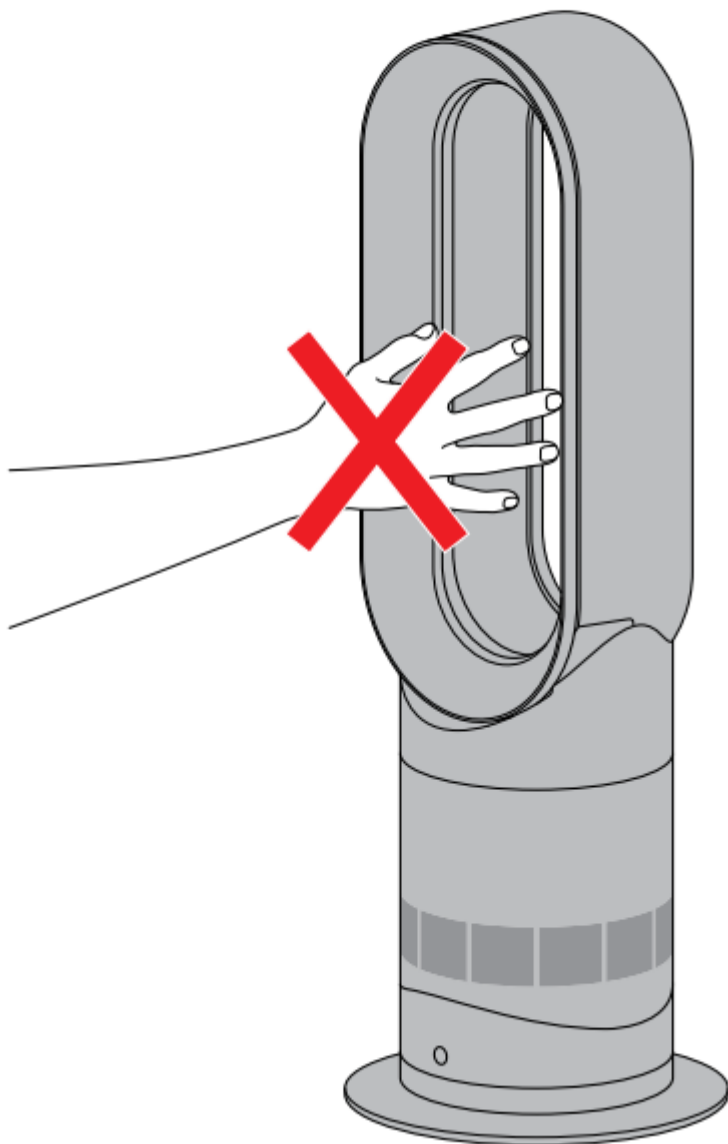
Ensure the appliance is unplugged and has been allowed to cool. Look for blockages in the air inlet holes and in the small aperture inside the air loop amplifier. Use a soft brush to remove debris.

## Cleaning



Unplug from the mains electricity supply. Allow to cool for 1 to 2 hours before cleaning if the appliance has been in use. To clean, wipe with a dry or damp cloth. Do not use detergents or polishes.

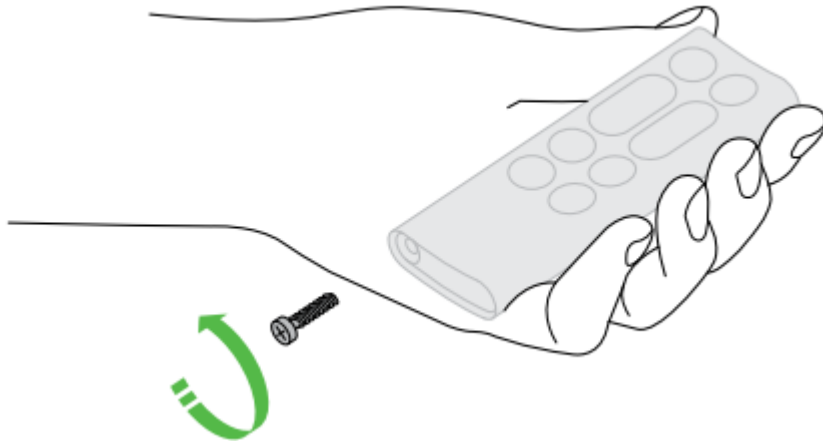
## CAUTION: hot when in use



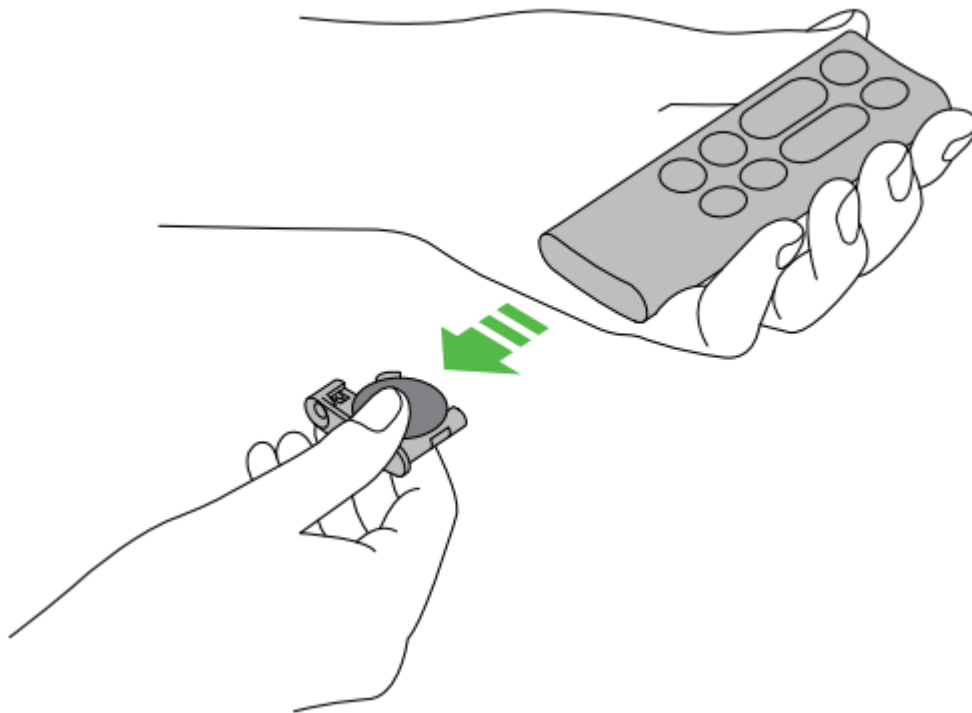
This appliance is hot when in use and for a short period after use. Do not let bare skin touch hot surfaces. If children are present, consider positioning the appliance out of their reach.

## Battery replacement

Battery type CR 2032.



Unscrew the battery compartment on the remote control. Loosen the base and pull to remove the battery



## USING YOUR DYSON APPLIANCE

Please read the 'Important Safety Instructions' in this Dyson Operating Manual before proceeding.

### LOOKING AFTER YOUR DYSON APPLIANCE

- Do not carry out any maintenance or repair work other than that shown in this
- Dyson Operating Manual, or advised by the Dyson Customer Care Helpline.

Always disconnect the plug from the mains before inspecting for problems. If the appliance will not operate, first check the mains socket has electricity supply and that the plug is properly inserted into the socket.

## Operation

- Ensure appliance is fully assembled in line with the instructions before use.
- Do not dismantle the appliance or use without the loop amplifier fitted.
- The appliance will not operate in heating mode unless the target temperature is above the room temperature.
- Each time the heating mode is selected, it conducts a short calibration cycle.
- Airflow will be automatically controlled during this cycle. Once the calibration cycle is complete, it will revert to the selected airflow speed.
- The appliance will not oscillate when the control buttons are pressed.
- Do not lubricate any part of this appliance.

## Control without the remote

- Press the Standby button on the appliance to turn ON/OFF.
- Press and hold the standby button on the appliance to adjust the target temperature. The target temperature will increase to a maximum before decreasing. If the target temperature is set at 0°C it will switch from heating to cool mode.
- The airflow, diffused and personal heating modes, oscillation function and sleep timer controls cannot be operated without the remote control.

## Tilt function

Carefully hold the base and the main body. Tilt the amplifier forward or backward for the required airflow angle.

## Automatic cut-out

- For your safety this appliance is fitted with automatic cut-out switches that operate if the appliance tips over or overheats. If the switches operate, unplug the appliance and allow it to cool. Before restarting the appliance check and clear any blockages and ensure the appliance is on a solid level surface.
- In heating mode the appliance will automatically switch 'OFF' after 9 hours of continuous use and will return to standby mode. To restart the machine, press the power button on either the remote control or the base.

## Troubleshooting

- Fault codes F4, F5, F6: If one of these appears on the display, unplug the appliance, wait for 30 to 60 seconds and/or plug the appliance into a different socket. If you continue to receive the fault code, please contact the Dyson Customer Care Helpline.
- Fault codes F2, F3, F7: If one of these appears on the display, please contact the Dyson Customer Care Helpline.

## Battery replacement

### CAUTION

- Unscrew the battery compartment on the remote control. Loosen the base and pull to remove the battery.
- Do not install backwards or short circuit the batteries.
- Do not attempt to dismantle or charge the batteries. Keep away from fire.
- Follow battery manufacturers' instructions when installing new batteries (battery type CR 2032).
- Limited functionality is available without the remote control (see 'Control without the remote').

## IMPORTANT SAFETY INSTRUCTIONS

BEFORE USING THIS APPLIANCE READ ALL INSTRUCTIONS AND CAUTIONARY MARKINGS IN THIS MANUAL AND ON THE APPLIANCE

When using an electrical appliance, basic precautions should always be followed, including the following:

**WARNING** THE FAN AND THE REMOTE CONTROL BOTH CONTAIN MAGNETS.

1. Pacemakers and defibrillators may be affected by strong magnetic fields. If you or someone in your household has a pacemaker or defibrillator, avoid placing the remote control in a pocket or near to the device.
2. Credit cards and electronic storage media may also be affected by magnets and should be kept away from the remote control and the top of the appliance.

**WARNING** These warnings apply to the appliance, and also where applicable, to all tools, accessories, chargers or mains adaptors.

**TO REDUCE THE RISK OF FIRE, ELECTRIC SHOCK, OR INJURY:**

3. When used in heating mode the appliance is hot when in use and for a short period after use. To avoid burns, do not let bare skin touch hot surfaces. When moving the appliance hold it by the base, not the air loop amplifier.

4. Keep combustible materials, such as furniture, pillows, bedding, papers, clothes and curtains, at least 0.9m (3 feet) from the front of the appliance and keep them away from the sides and rear when the appliance is plugged in.
5. This Dyson appliance is not intended for use by persons (including children) with reduced physical, sensory or mental capabilities, or lack of experience and knowledge, unless they have been given supervision or instruction by a responsible person concerning use of the appliance to ensure that they can use it safely.
6. Use only as described in this Dyson Operating Manual. Do not carry out any maintenance other than that shown in this manual, or advised by the Dyson Customer Care Helpline. Any other use not recommended by the manufacturer may cause fire, electric shock, or injury to persons.
7. The base must be fitted securely before operating. Do not dismantle or use without the base fitted.
8. Do not allow to be used as a toy. Close attention is necessary when used by or near children. Children should be supervised to ensure that they do not play with the appliance or remote control.
9. Suitable for dry locations ONLY. Do not use outdoors or on wet surfaces. Do not use in bathrooms, laundry areas or similar indoor locations. Never locate the appliance where it may fall into a bath or other water container. Do not use or store where it may get wet or in the immediate surroundings of a bath, a shower, or a swimming pool.
10. This appliance has hot parts inside. Do not use it in areas where petrol, paint, or flammable liquids are used or stored or where their vapours are present. Do not use in conjunction with or directly next to an air freshener or similar products.
11. Do not locate directly below a mains electricity supply socket.
12. Always plug directly into a wall socket. Never use with an extension cable as overloading may result in the cable overheating and catching fire.
13. Do not handle any part of the plug or appliance with wet hands.
14. Do not use with a damaged cable or plug. If the supply cable is damaged it must be replaced by Dyson, its service agent or similarly qualified person in order to avoid a hazard.
15. Do not unplug by pulling on the cable. To unplug, grasp the plug, not the cable.
16. Do not stretch the cable or place the cable under strain. Keep cable away from heated surfaces.
17. Do not run cable under carpeting. Do not cover cable with throw rugs, runners or similar coverings. Arrange cable away from traffic area and where it will not be tripped over.
18. To prevent a possible fire, do not use with any opening or exhaust blocked, and keep free of dust, lint, hair, and anything that may reduce airflow. Do not put any object into

the inlet grill or the exhaust opening as this may cause an electric shock or fire, or damage the appliance.

19. Do not use on soft surfaces, such as a bed, where openings may become blocked.
20. In order to avoid overheating, do not cover the heater.
21. For the best performance, place on the floor, in the corner of the room, at least 1m from any wall and facing into the centre of the room.
22. Turn off all controls before unplugging.
23. Do not use any cleaning agents or lubricants on this appliance. Unplug before cleaning or carrying out any maintenance.
24. If there is a loose fit between the plug and the socket or the plug becomes very hot, the socket may need to be replaced. Check with a qualified electrician to replace the socket.
25. Choking hazard - This remote control unit contains a small battery. Keep the remote control away from children and do not swallow the battery. If the battery is swallowed seek medical advice at once.
26. If the appliance is not working as it should, has received a sharp blow, has been dropped, damaged, left outdoors, or dropped into water, do not use and contact the Dyson Customer Care Helpline.
27. Contact the Dyson Customer Care Helpline when service or repair is required. Do not disassemble the appliance as incorrect reassembly may result in an electric shock or fire.

## IMPORTANT SAFETY FEATURES

For your safety this appliance is fitted with automatic cut-out switches that operate if it tips over or overheats.

If the switches operate, unplug the appliance and allow it to cool. Before restarting, check and clear any blockages and ensure the appliance is on a solid level surface.

### READ AND SAVE THESE INSTRUCTIONS

THIS DYSON APPLIANCE IS INTENDED FOR HOUSEHOLD USE ONLY



Do not pull on the cable.



In order to avoid overheating and fire hazard, do not cover the appliance.



Do not store near heat sources.



Do not carry by the air loop amplifier. The air loop amplifier is not a handle.



Do not use near naked flames.

### Warning

This content is compiled from multiple sources and is provided for reference purposes only. It may not be complete or fully applicable to all situations. If you are unable to resolve your issue, please contact the product manufacturer or an authorized service provider for official support.

---

Document generated by [ManualsFile](#)

