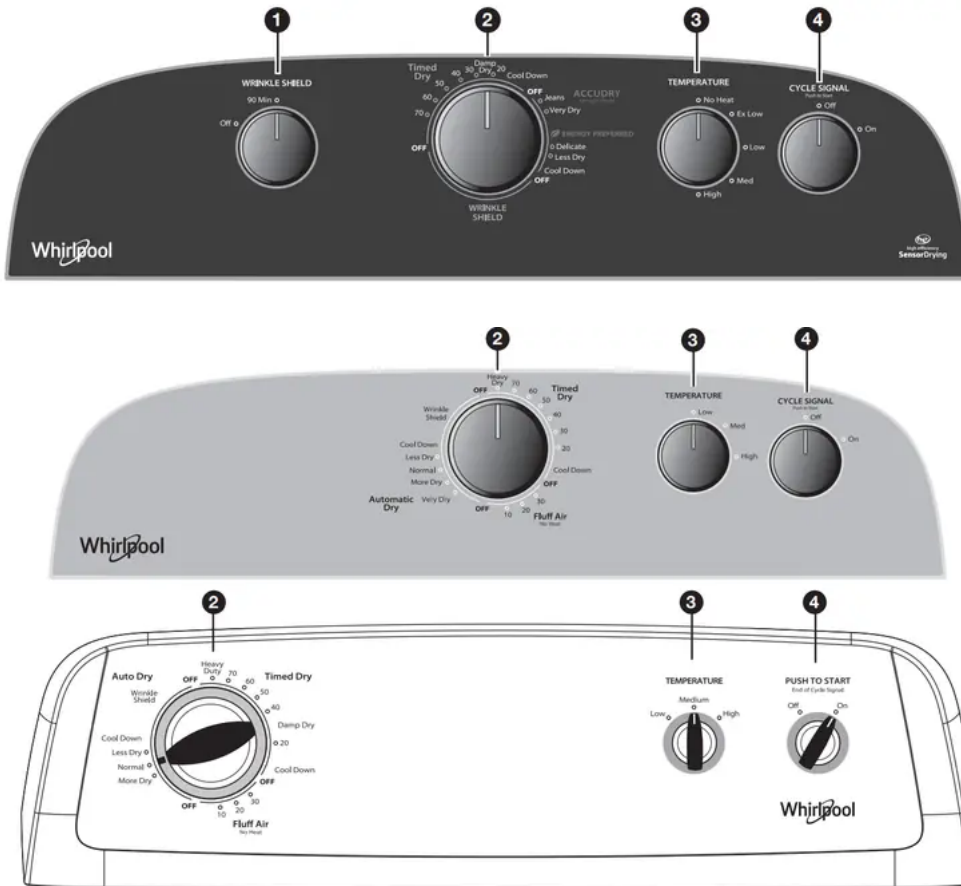


Control Panel & Features



Not all features and options are available on all models. Appearance may vary.

1 WRINKLE SHIELD™ Feature (on some models)

When you are unable to remove a load of clothes from the dryer as soon as it stops, wrinkles can form. The Wrinkle Shield™ feature periodically tumbles, rearranges, and fluffs the load to help keep wrinkles from forming.

- Get 90 minutes of heat-free, periodic tumbling at the end of a cycle. Turn the Wrinkle Shield™ knob to On or Off at any time before the cycle has ended.

2 DRYER CYCLE KNOB

Use your Dryer Cycle knob to select available cycles on your dryer. Turn the knob to select a cycle for your laundry load. See “Cycle Guide” for detailed descriptions of cycles.

TIMED DRY

Will run the dryer for the specified time on the control.

On models with a selectable temperature knob, you may choose a setting based on the fabrics in your load. Drying time and temperature will depend on your dryer model.

ACCUDRY™/AUTOMATIC DRY

Senses moisture in the load or air temperature and shuts off when the load reaches the selected dryness level. Gives the best drying in the shortest time. Drying time will vary based on fabric type, load size, and dryness setting.

3 TEMPERATURE

Select a drying temperature based on the fabrics in your load. If you are unsure of the temperature to select for a load, select the lower setting rather than the higher setting.

NOTE: The No Heat temperature setting (on some models) is not available on ACCUDRY™ cycles.

4 CYCLE SIGNAL/PUSH TO START

The Cycle Signal produces an audible sound when the drying cycle is finished. Promptly removing clothes at the end of the cycle reduces wrinkling.

Turn the Cycle Signal knob to select the desired setting (On or Off). Press the PUSH to START knob to start the dryer.

NOTE: When the Wrinkle Shield™ setting is selected and the Cycle Signal is on, the tone will sound every 5 minutes until the clothes are removed or the Wrinkle Shield™ setting ends.

Cycle Guide - ACCUDRY™/Automatic Dry Cycles

Not all cycles and settings are available on all models.

ACCUDRY™ - Senses moisture in the load or air temperature and shuts off when the load reaches the selected dryness level.

NOTE: Government energy certifications for the Whirlpool Gas and Electric models were based on the Timed Dry cycle with the Maximum drying temperature setting. The as-shipped defaults of Auto Dry, Normal cycle, Low heat, wrinkle shield were not used.

Items to dry:	Cycle:	Temperature:	Available Options:	Cy
Jeans, heavy work clothes, towels	Jeans, More, or Very Dry	High	Wrinkle Shield™ Temperature Cycle Signal	Automatic cycle in the shortest varies based on and dryness se
Work clothes, medium weight fabrics, sheets	Energy Preferred or Normal	Medium	Wrinkle Shield™ Temperature Cycle Signal	Select a drying the fabrics in y unsure of the t for a load, sele rather than the
Casual, shirts, pants, lightweight items, synthetics, delicates, athletic wear	Delicate or Less Dry	Low	Wrinkle Shield™ Temperature Cycle Signal	

NOTE: If loads do not seem as dry as you would like, select More or Very Dry the next time you dry a similar load. If loads seem drier than you like, select Less Dry the next time you dry a similar load.

Cycle Guide - Timed Dry Cycles

Not all cycles and settings are available on all models.

TIMED DRY - Will run the dryer for the specified time on the control.



Items to dry:	Cycle:	Temperature:	Available Options:	Cy
Large or heavy items such as thick towels or robes	Heavy Dry or Heavy Duty	Any	Temperature	Choose High loads.
Any load	Damp Dry	Any	Temperature	Dries items to items that do drying cycle.
Rubber, plastic, heat sensitive fabrics	Fluff Air	No Heat	Temperature	No heat drying

Setting the Drying Temperature

If your dryer has multiple heat settings:

A High temperature setting may be used for drying heavyweight items such as towels and work clothes.

A Low to Medium temperature setting may be used for drying medium-weight items such as sheets, blouses, dresses, underwear, permanent press fabrics, and some knits.

Use the No Heat setting for foam, rubber, plastic, or heat-sensitive fabrics.

Line dry bonded or laminated fabrics.

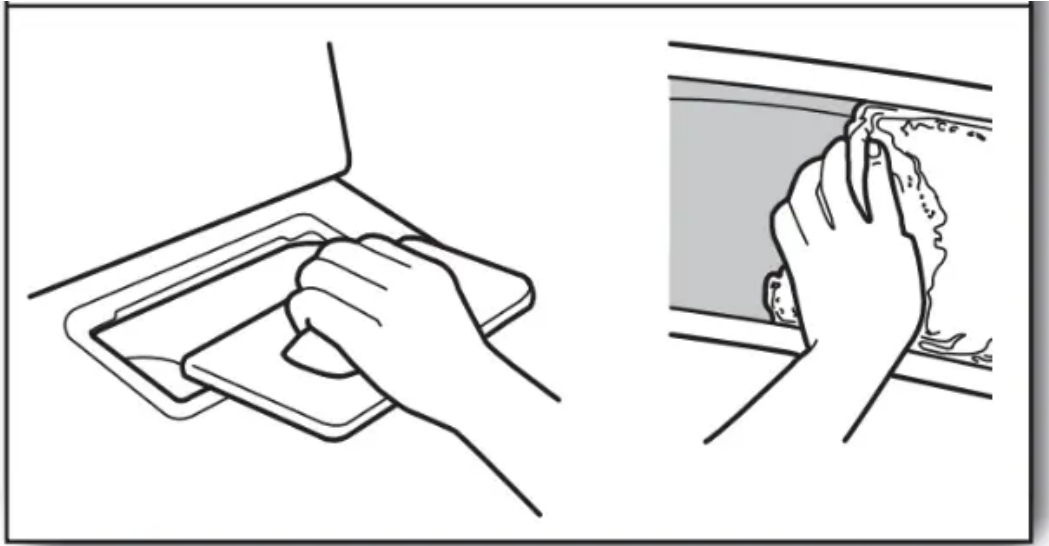
NOTE: If you have questions about drying temperatures for various loads, refer to the care label directions.

Using Your Dryer

WARNING: To reduce the risk of fire, electric shock, or injury to persons, read the IMPORTANT SAFETY INSTRUCTIONS before operating this dryer.

Before using your dryer, wipe the dryer drum with a damp cloth to remove dust from storing and shipping.

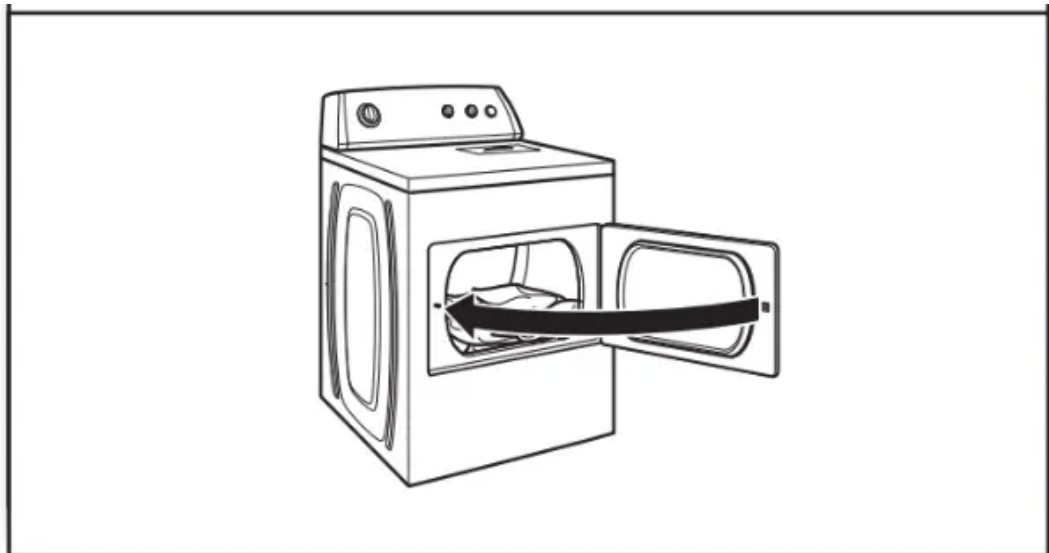
1. Clean the lint screen



Clean the lint screen before each load. Pull the lint screen out of its holder. Roll lint off the screen with your fingers. Do not rinse or wash screen to remove lint. Push the lint screen firmly back into place.

For additional cleaning information, see “Dryer Care”.

2. Load the dryer

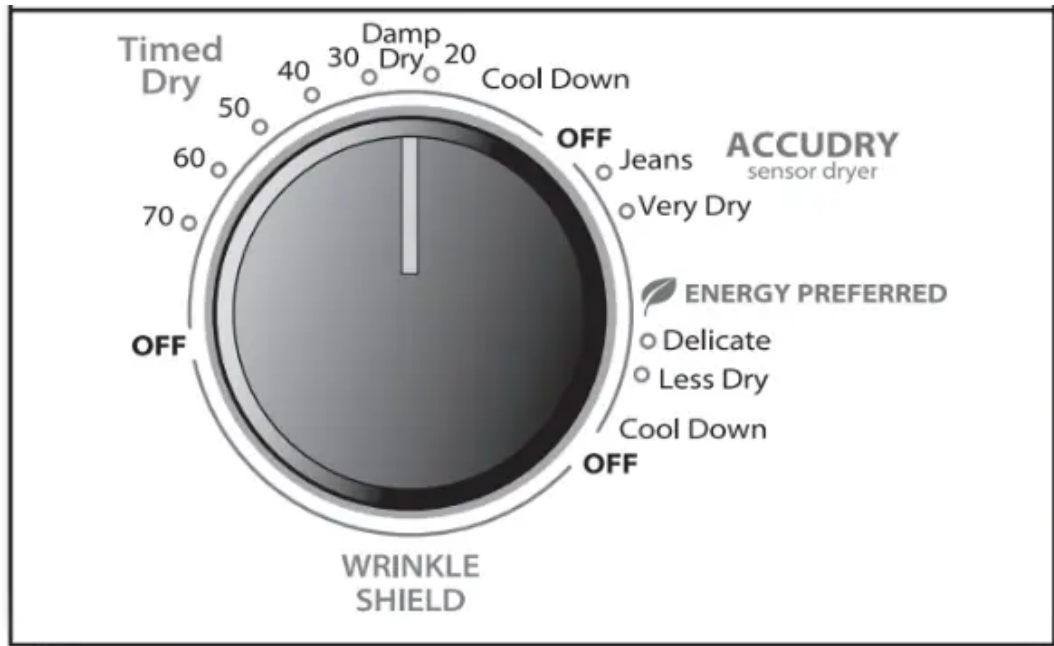


Place laundry in the dryer. Close the door.

NOTE: Your model may have a different door than the one shown. Some models have drop down doors.

Do not tightly pack the dryer; clothes should be able to tumble freely.

3. Select the desired cycle



Select the desired cycle for your load. See the “Cycle Guide” for more information about each cycle.

ACCUDRY™/Automatic Dry Cycles

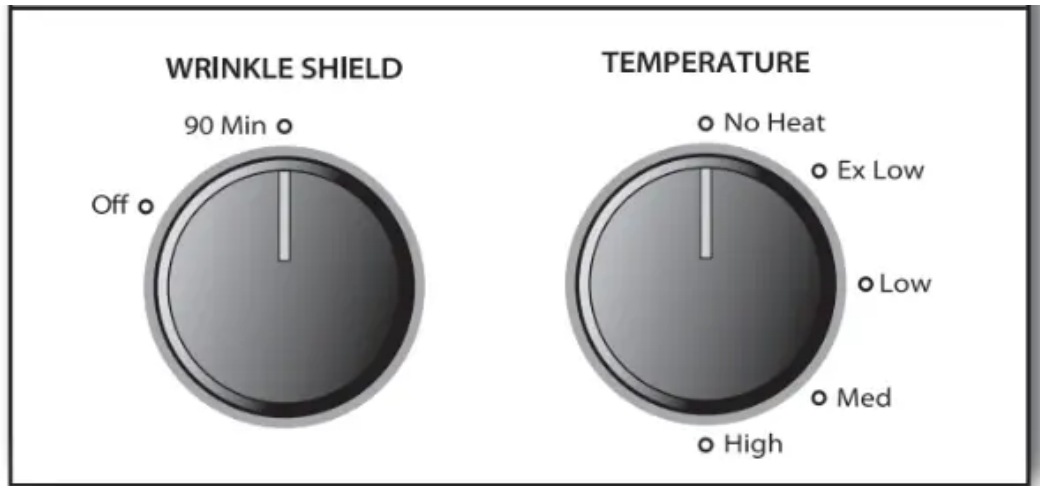
You can select a different dryness level, depending on your load, by turning the knob to dryness level.

Selecting More or Very Dry, Normal, ENERGY PREFERRED, or Less Dry automatically adjusts the dryness level at which the dryer will shut off. Once a dry level is set, it cannot be changed without stopping the cycle.

ACCUDRY™/AUTOMATIC DRY cycles give the best drying in the shortest time. Drying time varies based on fabric type, load size, and dryness setting.

NOTE: More or Very Dry removes more load moisture. ENERGY PREFERRED or Normal is used for a starting point for ACCUDRY™ cycles. Less Dry removes less moisture and is used for loads you may want to put on a hanger to complete drying.

4. Set cycle settings and options



Select cycle settings and options by turning the knob to the desired position.

NOTE: Not all options and settings are available with all cycles.

Temperature

Turn the Temperature knob to change the drying temperature setting. See “Setting the Drying Temperature”.

Wrinkle Shield™ feature (on some models)

- Get 90 minutes of heat-free, periodic tumbling at the end of a cycle. Turn the Wrinkle Shield™ knob to select on or off at any time before the cycle has ended.
- Some models with a Wrinkle Shield™ cycle will automatically get 40 minutes of heat-free, periodic tumbling at the end of a cycle.

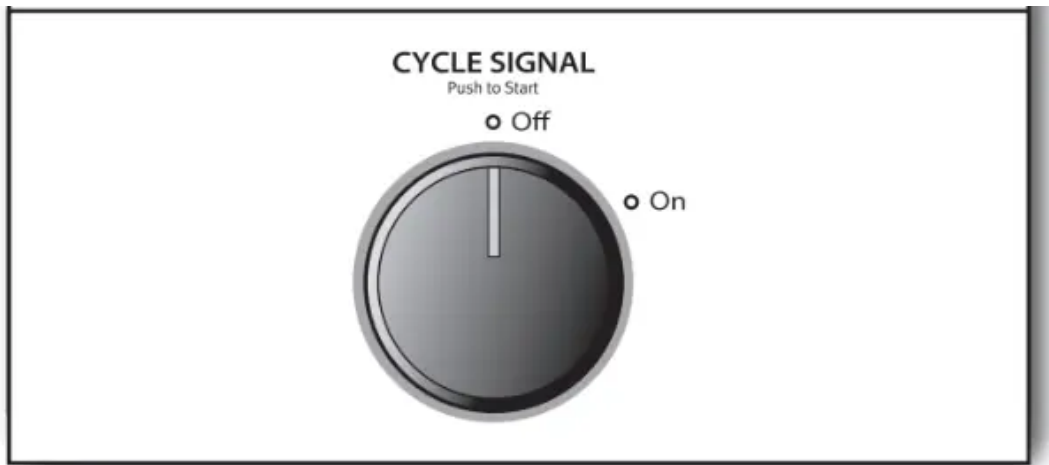
5. Select Cycle Signal (if desired)



Turn the Cycle Signal knob to select the desired setting (On or Off). The Cycle Signal produces an audible sound when the drying cycle is finished. Promptly removing clothes at the end of the cycle reduces wrinkling.

NOTE: When the Wrinkle Shield™ setting is selected and the Cycle Signal is On, the tone will sound every 5 minutes until the clothes are removed, or the Wrinkle Shield™ setting ends.

6. Press PUSH to START to begin cycle



Push and hold the PUSH to START knob to begin the cycle.

Promptly remove garments after cycle has completed to reduce wrinkling. Use the Wrinkle Shield™ feature to avoid wrinkling when you are unable to remove a load from the dryer as soon as it stops.

Dryer Care

Cleaning the dryer location

Keep dryer area clear and free from items that would block the air flow for proper dryer operation. This includes clearing piles of laundry in front of the dryer.

Cleaning the dryer interior

To clean dryer drum

1. Apply a liquid, nonflammable household cleaner to the stained area of the drum and rub with a soft cloth until stain is removed.
2. Wipe drum thoroughly with a damp cloth.
3. Tumble a load of clean cloths or towels to dry the drum.

NOTE: Garments that contain loose dyes, such as denim blue jeans or brightly colored cotton items, may discolor the dryer interior. These stains are not harmful to your dryer

and will not stain future loads of clothes. Dry these items inside out to avoid drum staining.

Removing accumulated lint

From Inside the Dryer Cabinet

Lint should be removed every 2 years, or more often, depending on dryer usage. Cleaning should be done by a qualified servicer.

From the Exhaust Vent

Lint should be removed every 2 years, or more often, depending on dryer usage.

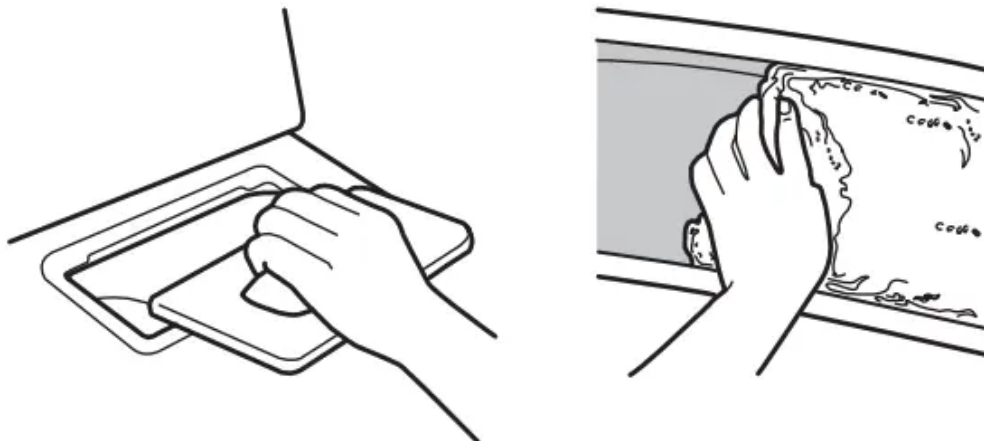
Cleaning the lint screen

Every load cleaning

The lint screen is located in the dryer. A screen blocked by lint can increase drying time.

To clean:

1. Pull the lint screen out of its holder. Roll lint off the screen with your fingers. Do not rinse or wash screen to remove lint. Wet lint is hard to remove.



2. Push the lint screen firmly back into place.

IMPORTANT:

- Do not run the dryer with the lint screen loose, damaged, blocked, or missing. Doing so can cause overheating and damage to both the dryer and fabrics.
- If lint falls off the screen into the dryer during removal, check the exhaust hood and remove the lint. See “Venting Requirements.”

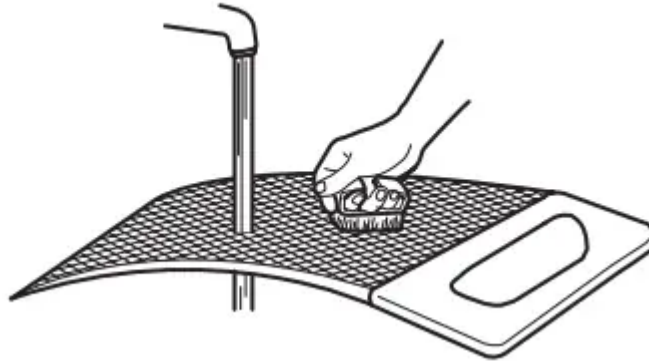
As needed cleaning

Laundry detergent and fabric softener residue can build up on the lint screen. This buildup can cause longer drying times for your clothes, or cause the dryer to stop before your load is completely dry. The screen is probably clogged if lint falls off while the screen is in the dryer.

Clean the lint screen with a nylon brush every 6 months, or more frequently, if it becomes clogged due to a residue buildup.

To wash:

1. Roll lint off the screen with your fingers.
2. Wet both sides of lint screen with hot water.
3. Wet a nylon brush with hot water and liquid detergent. Scrub lint screen with the brush to remove residue buildup.



4. Rinse screen with hot water.
5. Thoroughly dry lint screen with a clean towel. Reinstall screen in dryer.

Vacation, storage, and moving care

Non-Use or Storage Care

Operate your dryer only when you are at home. If you will be on vacation or not using your dryer for an extended period of time, you should:

1. Unplug dryer or disconnect power.
2. (For gas dryers only): Close shut-off valve to gas supply line.
3. Clean lint screen. See “Cleaning the Lint Screen.”

Moving Care

For power supply cord-connected dryers:

1. Unplug the power supply cord.
2. Make sure leveling legs are secure in dryer base.
3. Use tape to secure dryer door.

For direct-wired dryers:

1. Turn off power at fuse or breaker box.
2. Disconnect wiring.
3. Make sure leveling legs are secure in dryer base.



4. Use tape to secure dryer door.

For gas dryers:

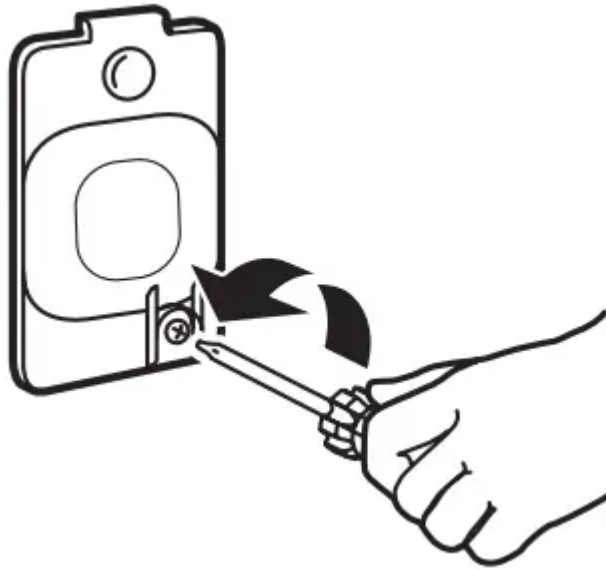
1. Unplug or disconnect power to dryer.
2. Close shut-off valve in gas supply line.
3. Disconnect gas supply line pipe and remove fittings attached to dryer pipe.
4. Cap the open fuel supply line.
5. Make sure leveling legs are secure in dryer base.
6. Use tape to secure dryer door.

Reinstalling the Dryer

Follow the "Installation Instructions" to locate, level, and connect the dryer.

Changing the drum light (on some models)

1. Unplug dryer or disconnect power.
2. Open the dryer door. Locate the light bulb cover on the back wall of the dryer. Using a Phillips-head screwdriver, remove the screw located in the lower right-hand corner of the cover. Remove the cover.



3. Turn bulb counterclockwise. Replace the bulb with a 10-watt appliance bulb only. Replace the cover and secure with the screw.
4. Plug into a grounded outlet or reconnect power.

Troubleshooting



If you experience	Possible Causes	Solution
<p>Clothes are not drying satisfactorily; drying times are too long</p>	Lint screen clogged with lint.	Lint screen should be cleaned before each load.
	Fluff Air cycle or No Heat temperature setting has been selected.	Select the right cycle for the types of garments. See "Cycle Guide."
	Load too large and heavy to dry quickly.	Separate the load to tumble freely.
	Exhaust vent or outside exhaust hood clogged with lint, restricting air movement.	Run the dryer for 5-10 minutes. Hold your hand to the outside exhaust hood to check air movement. If you do not feel air movement, clean exhaust system. Replace exhaust vent with heavy metal or flexible metal vent. Make sure vent is not crushed or kinked. See Installation Instructions.
	Fabric softener sheets blocking the grille.	Use only one fabric softener sheet, and use it correctly.
	Exhaust vent not the correct length.	Check that the exhaust vent is not too long or has too many turns. Long venting will increase drying time. Make sure vent is not crushed or kinked. See Installation Instructions.
	Exhaust vent diameter not the correct size.	Use 4" (102 mm) diameter vent material.
	Dryer located in a room with temperature below 45°F (7°C).	Proper operation of dryer cycles requires room temperature above 45°F (7°C).
	Dryer located in a closet without adequate opening.	Closet doors must have ventilation opening at the top and bottom of the door. The front of the dryer requires a minimum of 1" (25 mm) of airspace and, for vented installations, the rear of the dryer requires a minimum of 1" (25 mm) of airspace. See Installation Instructions.



Dryer will not run	Door not closed completely.	Make sure the dryer door is closed completely.
	PUSH to START knob not pressed firmly or held long enough.	Press and hold the PUSH to START knob until you hear the dryer drum moving.
	Household fuse is blown or circuit breaker has tripped.	Electric dryers use 2 household fuses or circuit breakers. The drum may be turning, but you may not feel heat. Replace both fuses or reset the circuit breaker. If the problem continues, call an electrician.
	Incorrect power supply.	Electric dryers require 240-volt power supply. Call a qualified electrician.
	Wrong type of fuse.	Use a time-delay fuse.
Unusual sounds	Dryer had a period of non-use.	If the dryer hasn't been used for awhile, there may be a thumping sound during the first few minutes of the cycle.
	A coin, button, or paper clip is caught between the drum and front or rear of the dryer.	Check the front and rear edges of the drum for foreign objects. Clean out pockets before laundering.
	It is a gas dryer.	The gas valve clicking is a normal operating sound.
	The four legs are not installed, or the dryer is not level front to back and side to side.	The dryer may vibrate if not properly installed. See the Installation Instructions.
	Clothing knotted or balled up.	When balled up, the load will bounce, causing the dryer to vibrate. Separate the load items and restart the cycle.
No heat	Household fuse is blown or circuit breaker has tripped.	The drum may be turning, but you may not feel heat. Electric dryers use 2 household fuses or circuit breakers. Replace both fuses or reset the circuit breaker. If the problem continues, call an electrician.

	Supply line valve not open.	For gas dryers, make sure the supply line
	Incorrect power supply.	Electric dryers require 240-volt power supply. Consult a qualified electrician.
Cycle time too short	Automatic cycle ending early.	<p>The load may not be contacting the sensor. Level the dryer.</p> <p>Use Timed Dry for very small loads. Check the Dry Level setting on ACCUDRY™/Automatic.</p> <p>Increasing or decreasing the Dry Level setting will change the amount of drying time in a cycle.</p>
Lint on load	Lint screen clogged.	Lint screen should be cleaned before each cycle.
Stains on load or drum	Dryer fabric softener not properly used.	<p>Add dryer fabric softener sheets at the beginning of the cycle. Fabric softener sheets added to a load can stain your garments.</p> <p>Drum stains are caused by dyes in clothing (e.g., jeans). These will not transfer to other clothes.</p>
Loads are wrinkled	Load not removed from dryer at the end of the cycle.	Select Wrinkle Shield™ feature to tumble clothes on heat to avoid wrinkling.
	Dryer tightly packed.	Dry smaller loads that can tumble freely to prevent clothes from forming.
Odors	You have recently been painting, staining, or varnishing in the area where your dryer is located.	If so, ventilate the area. When the odors are gone from the area, rewash and dry the clothes.
	The electric dryer is being used for the first time.	The new electric heating element may have a slight odor. The odor will be gone after the first cycle.
Load is too hot	Laundry items removed from the dryer before the end of the cycle.	Allow Cool Down cycle to finish before removing clothes from dryer. All cycles are cooled slowly to prevent wrinkling and make it easier to handle. Items removed before Cool Down may feel very warm.



	A high temperature cycle was used, or a separate temperature control was set on High.	Select a lower temperature and use an au cycle. These cycles sense the temperature moisture level in the load and shut off whe reaches the selected dryness. This reduce
--	---	--

Warning

This content is compiled from multiple sources and is provided for reference purposes only. It may not be complete or fully applicable to all situations. If you are unable to resolve your issue, please contact the product manufacturer or an authorized service provider for official support.

