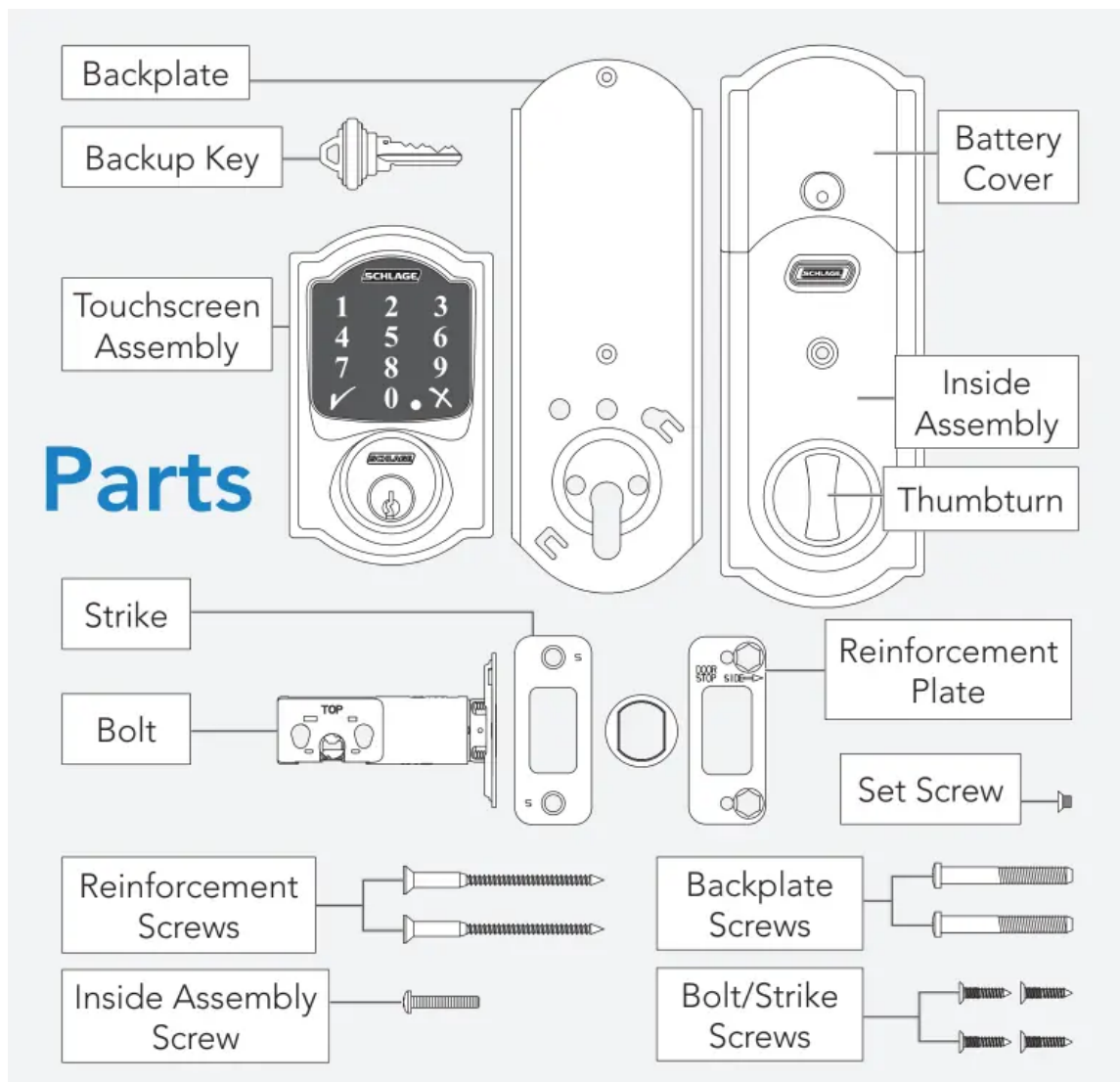


Quick Start Guide



Tools



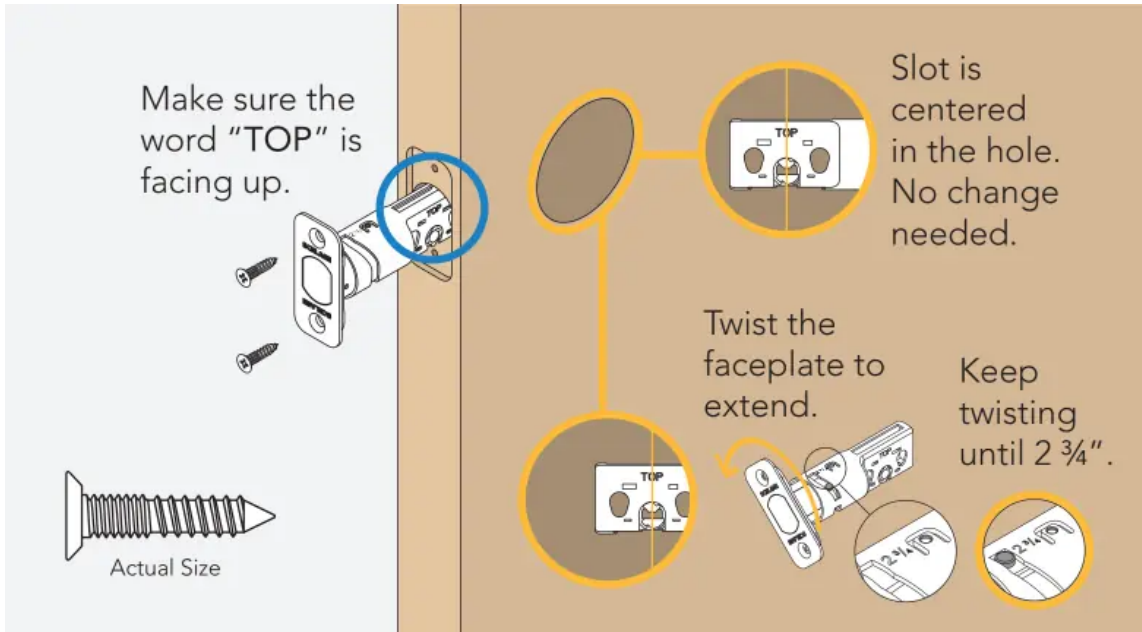
Phillips screwdriver
Don't use a power drill!

Step 1: Install the bolt.

You may have to adjust your bolt length. Make sure the slot in the bolt is centered in the hole.

Need Help?

See "Help with Step 1" in the online instructions. The link is on the back 1 cover or the third page of this guide.

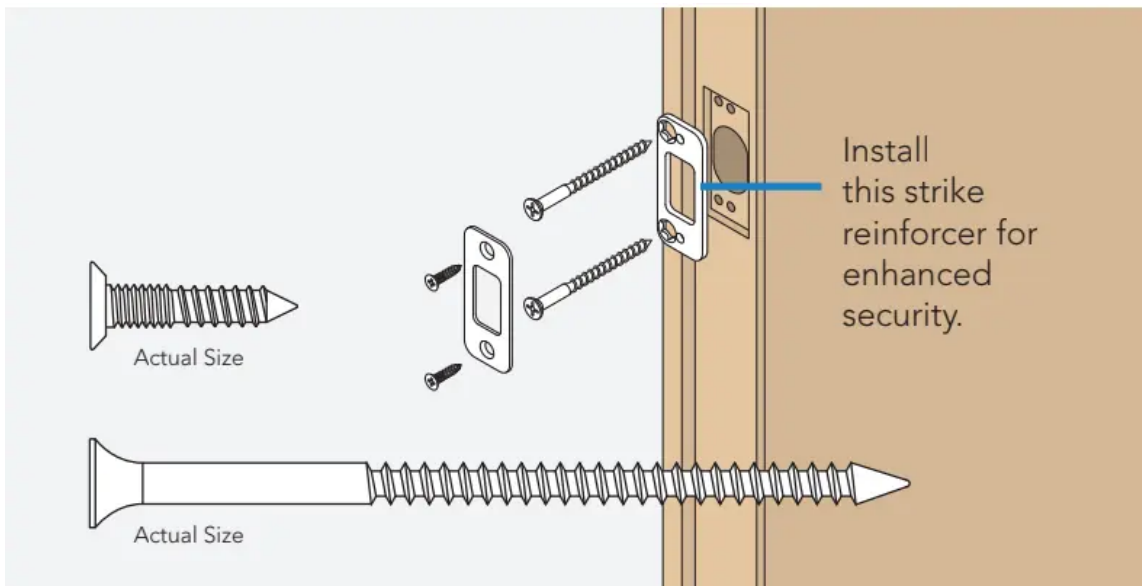


Step 2: Install the strike into the door frame.

If you have a window next to your door, you may not be able to use the longer wood screws to install the reinforcer.

Need Help?

Trouble installing the strike reinforcer? See "Help with Step 2" in online instructions.



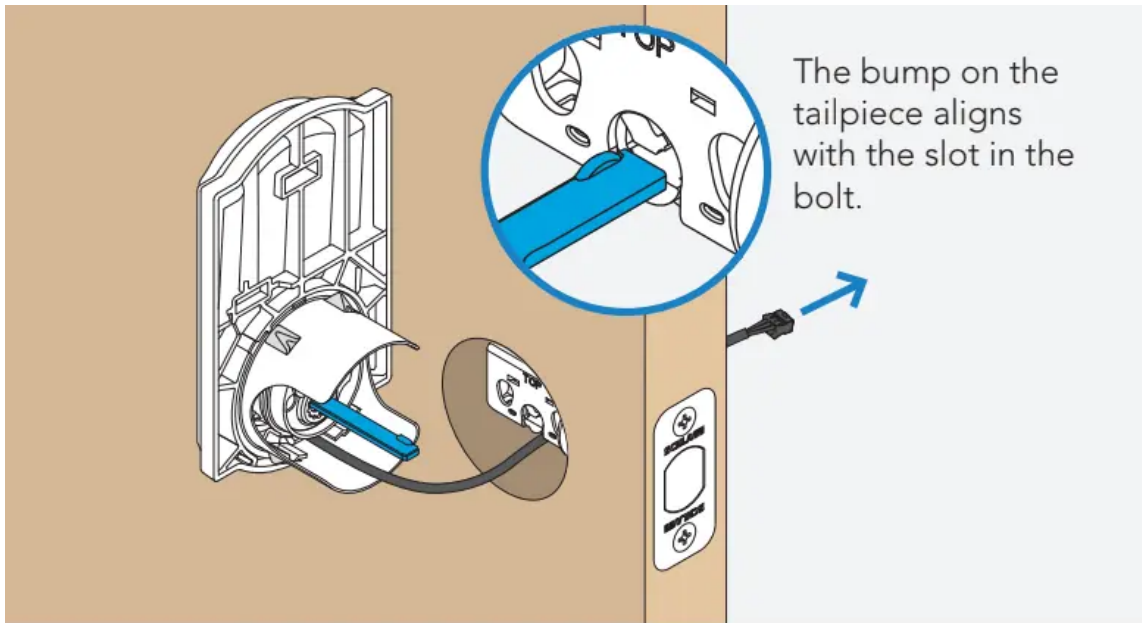
Step 3: Install the touchscreen.

Route the cable through the door BELOW the bolt. Align the tailpiece as shown and push the touchscreen onto the door.

Is it hard to install the touchscreen?

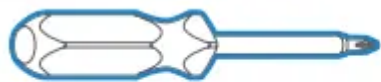
Is the tailpiece not installing correctly?

If the hole through your door seems too small, you may need to remove the spacer. See the online instructions.



Step 4: Install the inside backplate.

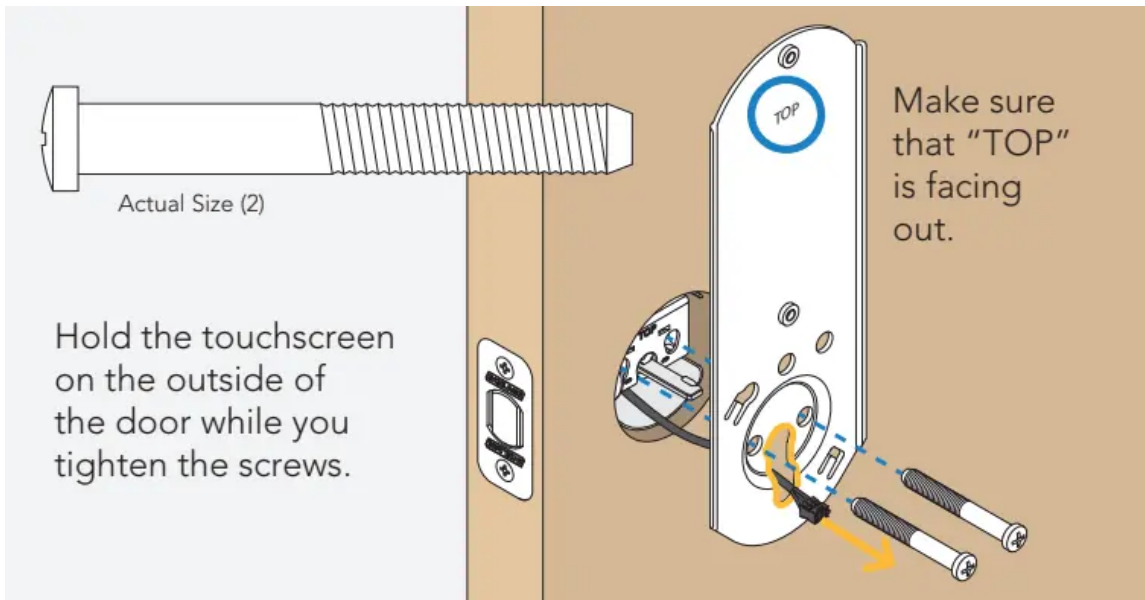
Route the cable below the bolt and through the hole on the bottom of the backplate. Secure the backplate with screws.



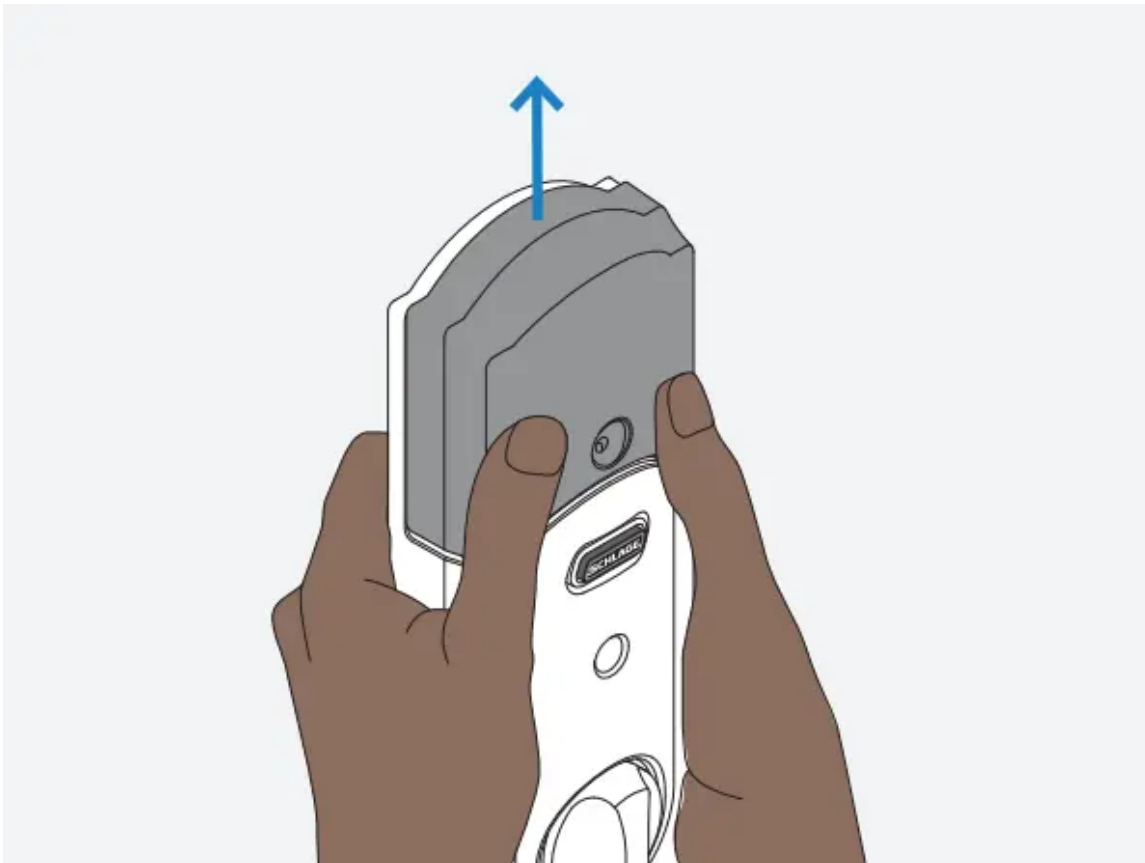
Phillips screwdriver

Don't use a power drill!

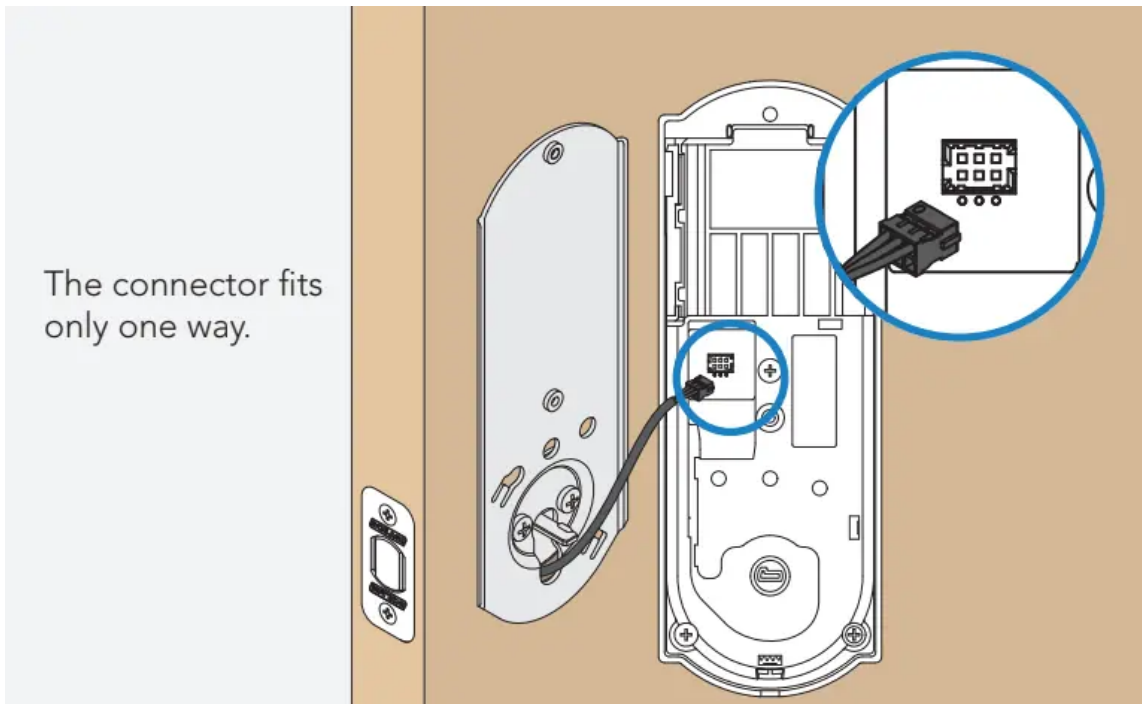
You may damage your lock!



Step 5: Take off the battery cover.

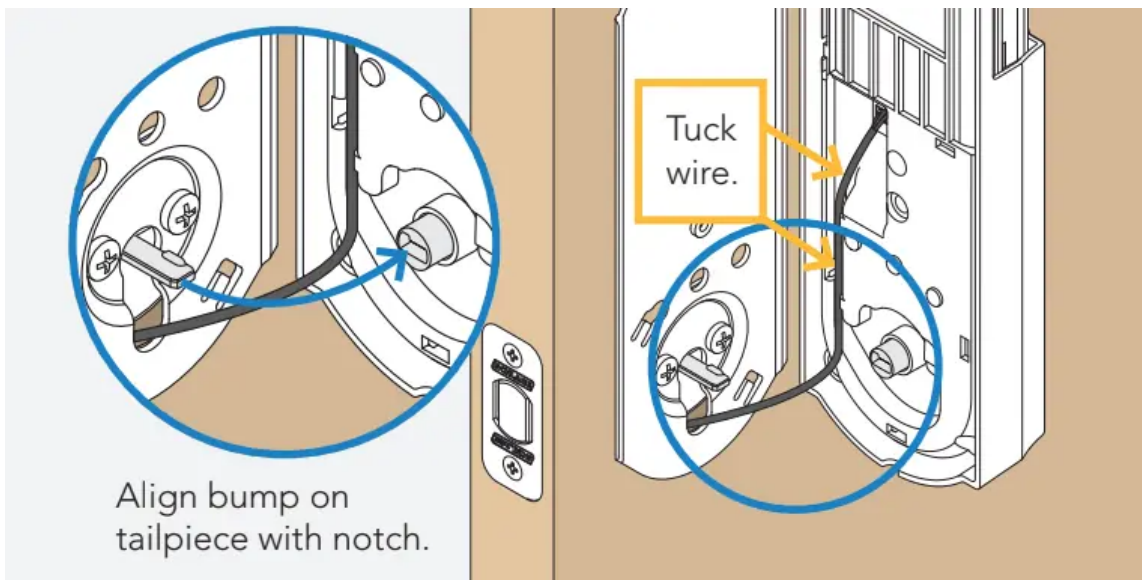


Step 6: Connect the cable.

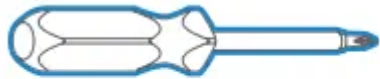


Step 7: Secure the lock to the door.

If the bump on the tailpiece doesn't align with the slot in the back of the inside assembly, make sure your thumb turn is vertical (up and down). Tuck the wire into the channel.

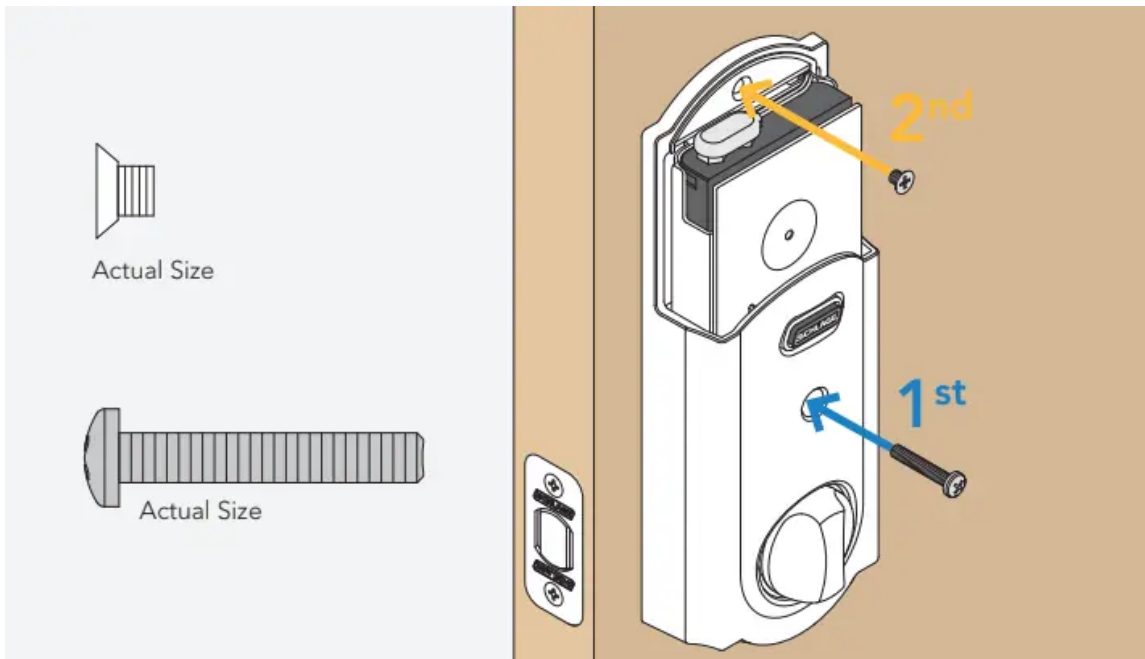


Step 8: Install the screws.

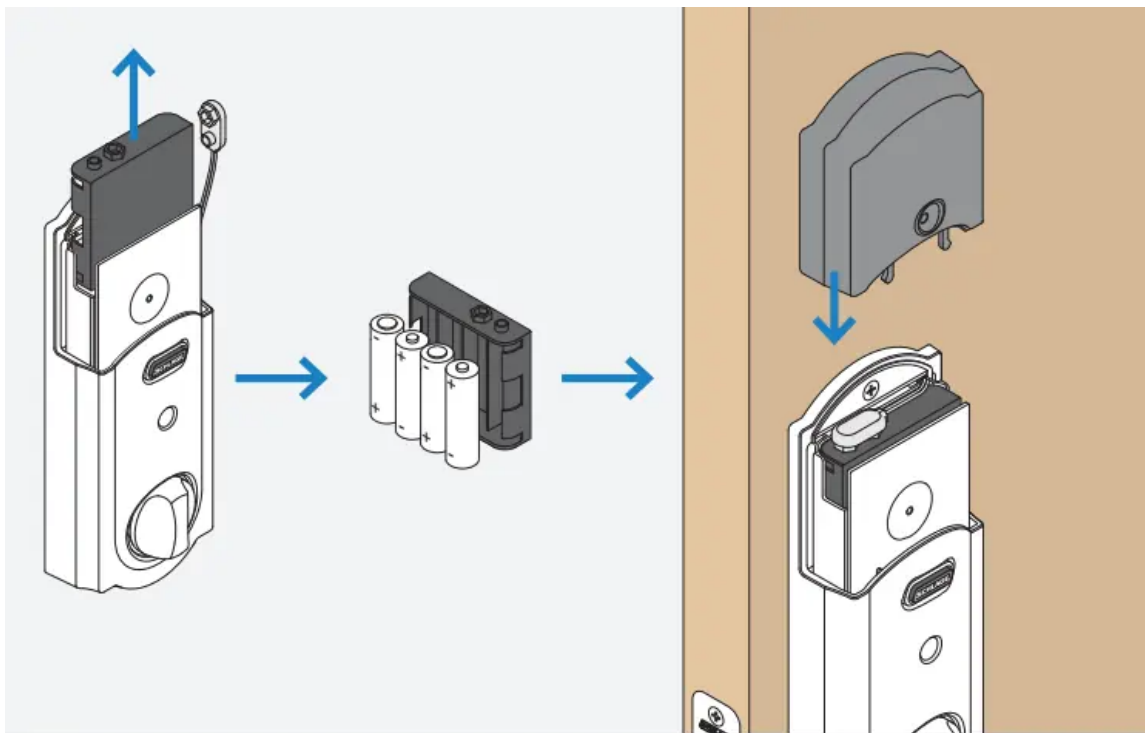


Phillips screwdriver

Don't use a power drill!
You may damage your lock!



Step 9: Install batteries and slide the cover on.



Step 10: Set up your lock.

1. Open your door!
2. Enter one of the two default user codes. The codes are located on the back of this guide and on the back of the inside assembly. You need to remove the inside assembly to see the label.

3. Your lock will enter a setup routine.

When the bolt stops moving, setup is complete.



Step 11: Test your lock.

1. Close your door.
2. Extend and retract the bolt using the inside thumbturn.
3. Make sure the bolt retracts smoothly. If it doesn't your door and frame may not be aligned.
4. Open your door.
5. Extend the bolt using the inside thumbturn.
6. Now enter a user code at the touchscreen to check that the bolt retracts.

Need Help?

If the bolt doesn't extend or retract during testing, see the online instructions and make sure spindle is aligned properly.

Step 12: Enroll your lock.

1. Place your smart home system or panel into enrollment mode (see documentation for that device for details).
2. Remove the battery cover.
3. Press then release button.
4. A yellow flashing light indicates enrollment is in progress.
5. A solid green light indicates successful enrollment.

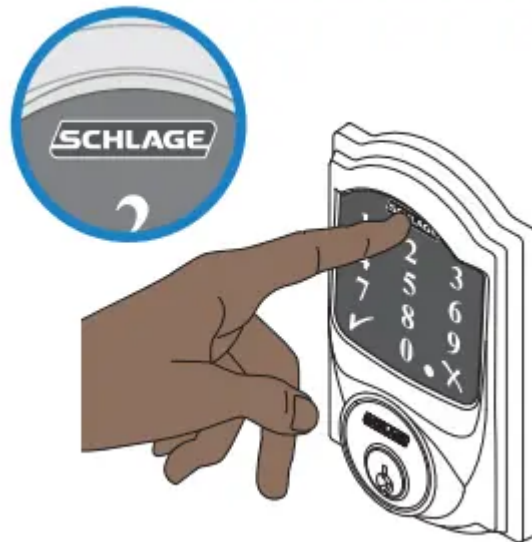
A red light indicates an enrollment issue, try repeating steps 1-3.



Lock and unlock

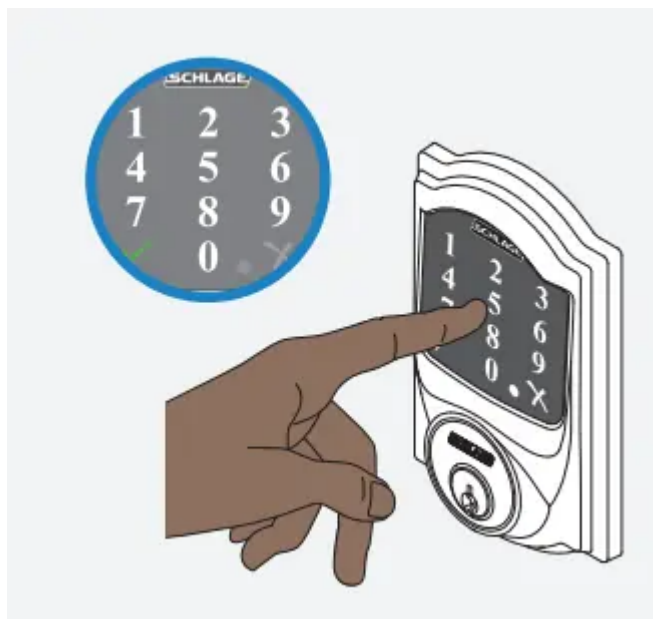
To lock your door just tap the  logo.

You can also lock your door by entering a user code while the door is closed or by turning the thumb turn toward the door edge.



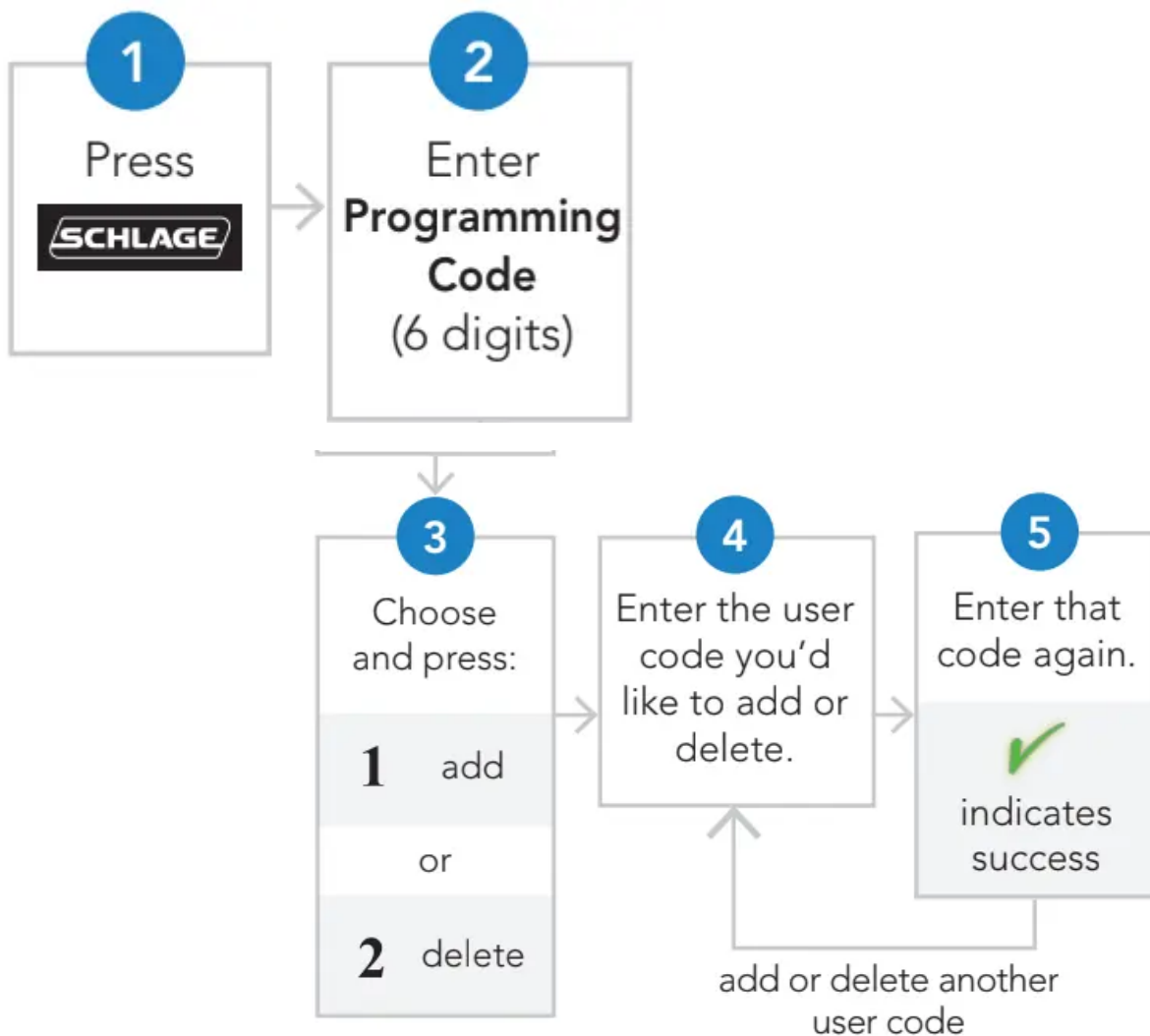
To unlock your door enter a user code.

You can also unlock your door from inside by turning the thumb turn away from the door edge.




Add and delete codes

- The lock supports user codes between 4 and 8 digits and is set to a default length of 4 digits.
- The first 4 - 6 digits must be different from the first 4 - 6 digits of the programming code.

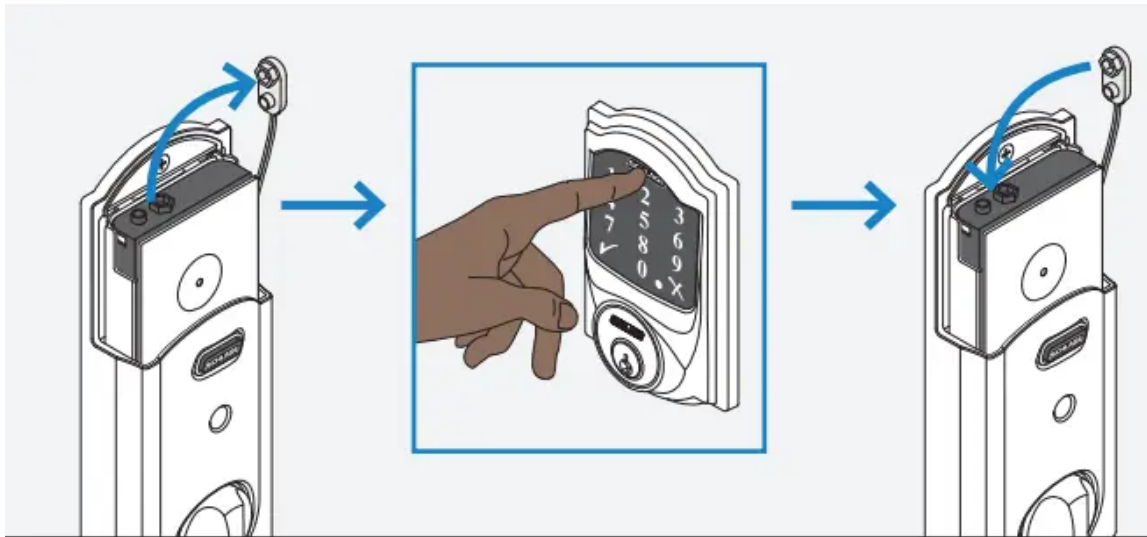


Factory default reset

If you have forgotten your programming code, you can restore the default codes. If you want to move the lock to a different door, you need to restore default settings. Move the lock to the new door, and then set it up again.

1. Disconnect your batteries.
2. Press and hold down the  logo. While you are pushing the logo, reconnect your batteries.
3. Test your lock with one of your default codes, located on the back of this guide.

Now set up your lock, see step 10



Warning

This content is compiled from multiple sources and is provided for reference purposes only. It may not be complete or fully applicable to all situations. If you are unable to resolve your issue, please contact the product manufacturer or an authorized service provider for official support.