

## BRITA FAUCET FILTRATION SYSTEM

### Welcome!

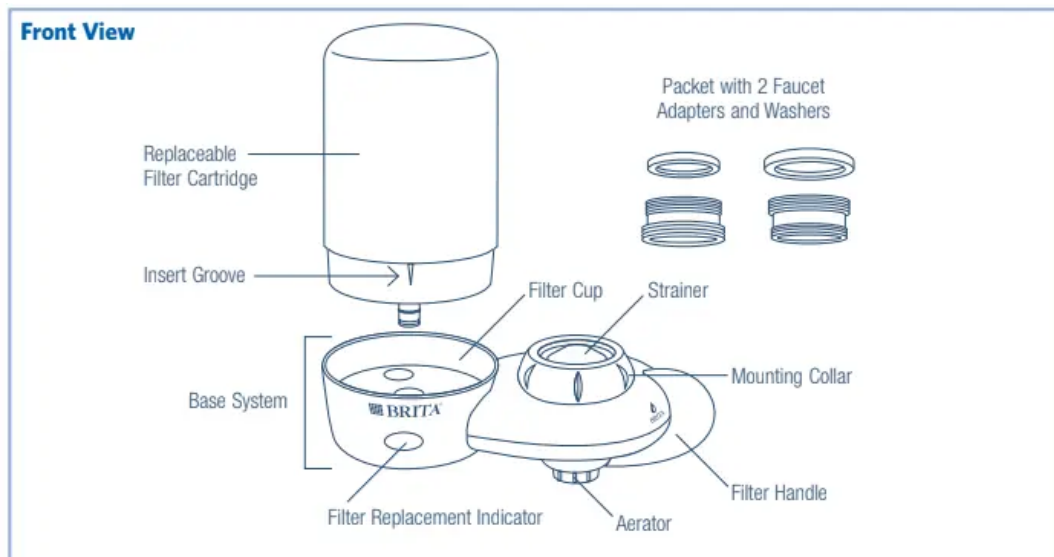
Thank you for choosing BRITA®, the #1 brand in home water filtration worldwide. Brita's certified water filtration systems turn ordinary tap water into cleaner, great-tasting water.

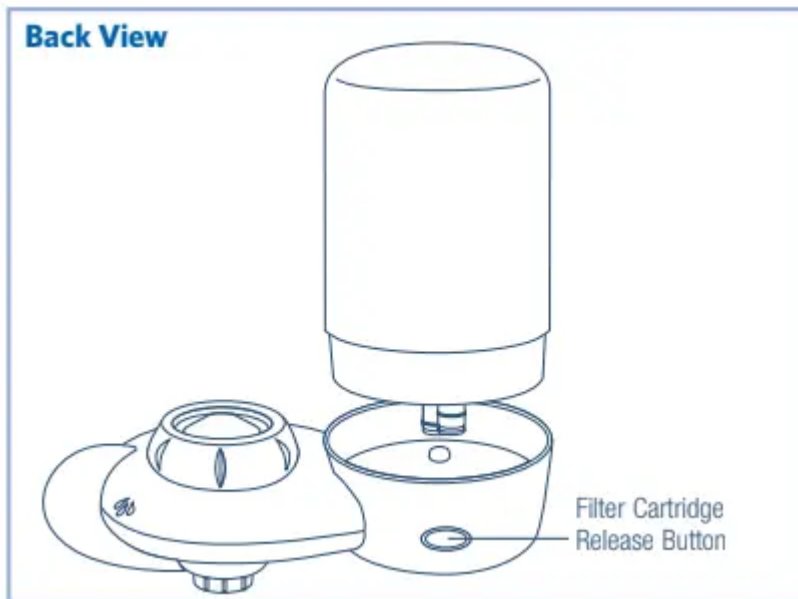
---

### Components & Functions

If any parts are missing, or to locate retailers, please call BRITA Consumer Services at 1-800-24-BRITA (U.S.) or 1-800-387-6940 (Canada).

**NOTE:** This product contains a nonreplaceable, sealed battery. The batteries and electronics are sealed in a waterproof compartment inside your Brita® Faucet Filtration System and do not come into contact with water. The Filter Replacement Indicator is designed to last for the life of your Brita® Faucet Filtration System (about 5 years, depending on usage).





---

## INSTALLATION IN FIVE EASY STEPS

### STEP 1: Remove aerator from faucet.

Unscrew (clockwise) the aerator and remove any original rubber washers from your faucet. If difficult to remove, use a dry towel to grip the aerator. Clean off any scale or rust buildup.



### STEP 2: Determine if you need to use an adapter.

#### If your faucet has threads on the outside:

You most likely will not need to use an adapter. Attempt to attach the system directly to your faucet. If it does not fit, please contact us at 1-800-24-BRITA (U.S.) or 1-800-387-6940 (Canada). Proceed to Step 3.

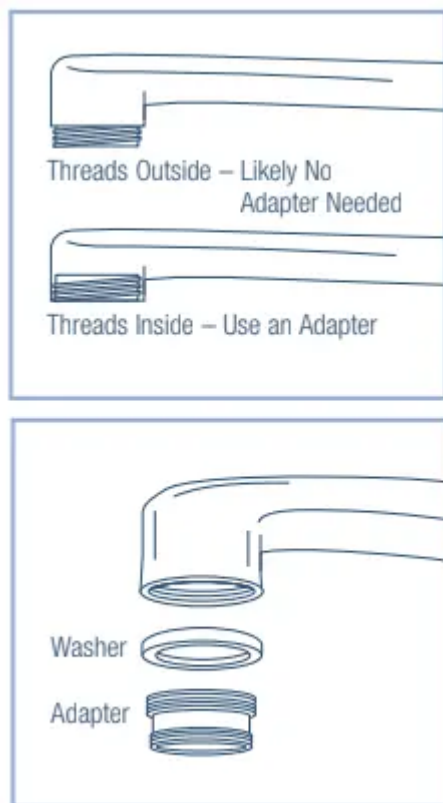
### If your faucet has threads on the inside:

You will need to use one of the adapters and corresponding washers provided. Select the proper adapter and washer that fit onto your faucet. If neither adapter fits, please contact us at 1-800-24-BRITA (U.S.) or 1-800-387-6940 (Canada).

1. Place the washer into the recessed end of the adapter.
2. Twist the adapter (counterclockwise) onto your faucet and tighten by hand until snug.
3. If difficult to tighten, insert a coin into the notch in the bottom of the adapter and twist until snug.
4. Make sure it is leveled, and don't force it to fit.

**Caution:** Using pliers to tighten the adapter may damage the threading.

**NOTE:** The Brita Faucet Filtration System cannot be attached to faucets with a built-in spray feature at the end of the faucet.

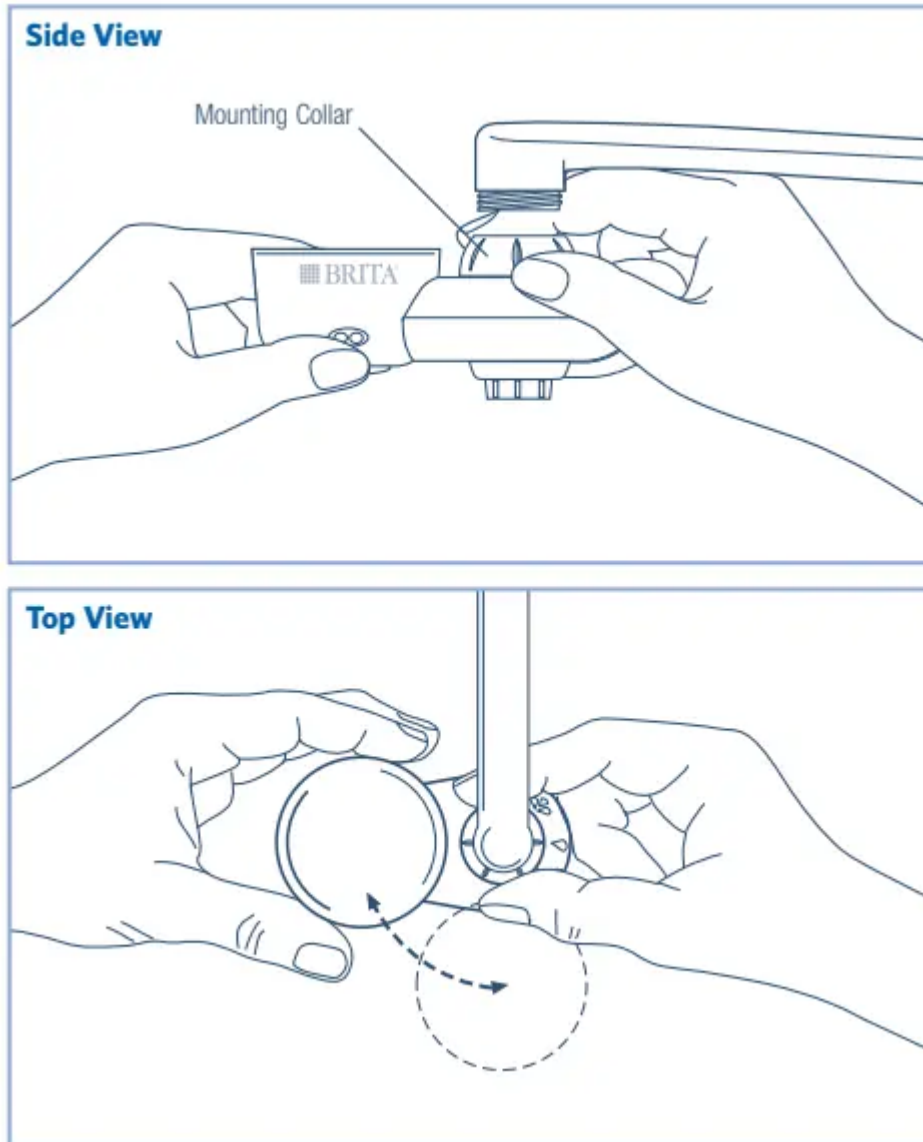


### STEP 3: Attach the base system to your faucet.

1. Position the base system so that the filter cup is on the left side of your faucet and the Filter Replacement Indicator is facing you.
2. Twist the mounting collar onto the faucet and tighten by hand until snug. Do not tighten with pliers. Do not over-tighten. Make sure it is leveled, and don't force it to fit.

3. If you are having difficulty, rotate the base system backward and forward while further tightening the mounting collar.

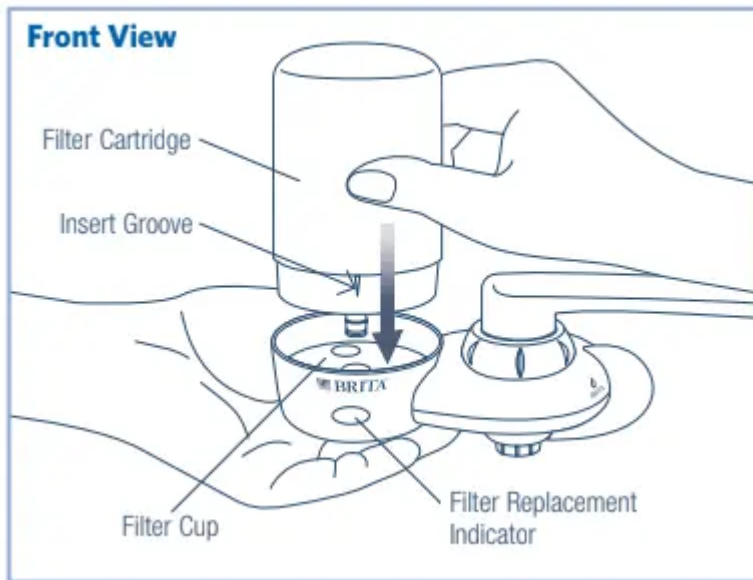
Damaged threading on faucet may cause fit issues. Please contact us at 1-800-24-BRITA (U.S.) or 1-800-387-6940 (Canada) if you need any assistance.



#### **STEP 4: Insert filter cartridge into filter cup.**

1. Support the bottom of the filter system with one hand.
2. Align the insert groove on the lower part of the cartridge with the Filter Replacement Indicator at the front of the filter cup.
3. Insert the filter cartridge into the filter cup until a "click" is heard. Do not force the filter cartridge into the system base.

Inserting the new filter cartridge automatically resets and activates the electronic Filter Replacement Indicator. A green signal will flash, indicating that the filter is engaged.



## STEP 5: Flush the new filter cartridge with water.

1. Move the filter handle toward you to the filtered Brita water setting: [IMAGE\_6]
2. Turn on the faucet to flush the new filter for 5 minutes to remove any carbon dust and activate the filter. It is normal for carbon dust to appear.

The 100 gallon/378 liter filter life begins after the 5-minute conditioning period.

**NOTE:** Use with cold water only. Do not run hot water (above 100°F / 38°C) through the filter, as it may damage the filter. It is OK to run hot water on the unfiltered water setting.



---

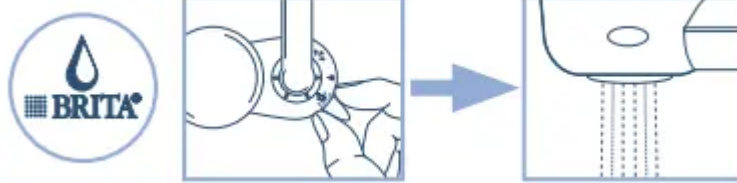
## USE AND CARE OF FILTER

### Your Brita Faucet Filtration System is ready to use!

By adjusting the handle to the following positions, you can select the water you want:

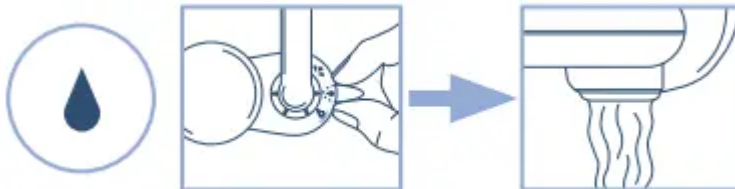
#### FILTERED WATER

Move handle to forward position to... Only draw filtered water from filter port. All other water is unfiltered.



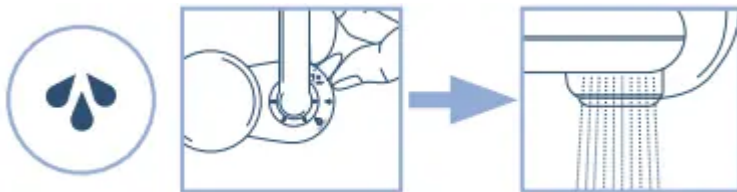
### STREAM OF UNFILTERED WATER

Move handle to middle position to...



### SPRAY OF UNFILTERED WATER

Move handle to rear position to...



---

### Filter Replacement Indicator

Regular filter replacement is the key to ensuring cleaner and great-tasting water. The Brita® Faucet Filtration System makes it easy for you to know when to change your filter.

The Filter Replacement Indicator monitors the filter life and tells you when to replace the filter cartridge, based on average water quality and filtered water usage by the average family.

The Filter Replacement Indicator will signal the need for replacement after approximately 100 gallons/378 liters or 4 months, whichever comes first.

Each time you begin filtering water, a light will illuminate to signal the filter status.

### INDICATOR LIGHT & FILTER STATUS

- **Filter Working:** When switched to the filtered Brita® water setting, the green light will flash to show your filter is working.



Flashing Green

- **Change Filter Soon:** When switched to the filtered Brita® water setting, the amber light will flash when your filter has 2 weeks or approximately 20 gallons/75 liters of life left. Your filter is working, but it has entered the Replacement Warning Period signaling that the filter will need to be replaced soon.



Flashing Amber

- **Change Filter Now:** When switched to the filtered Brita® water setting, the red light will flash to indicate that your filter cartridge has reached the end of its life and needs to be replaced now.



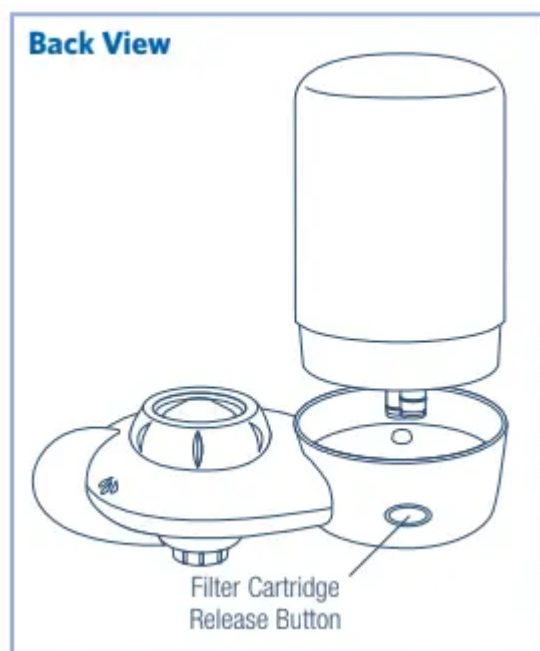
Flashing Red

## Replacing filter cartridge

Replacing the filter cartridge is easy. If the Filter Replacement Indicator flashes red when you switch to the filtered Brita® water setting, it is time to replace the filter cartridge. Prompt filter replacement assures you of cleaner, great-tasting water.

1. To remove the old cartridge, turn water off, press the filter cartridge release button located at the back of the filter cup and pull cartridge up to remove it.
2. To insert a new cartridge, follow the directions in Step 4.

Brita® Faucet Replacement Filters are available in white or chrome finish.



**NOTE:** If the filter is removed for cleaning purposes (e.g., for rinsing or wiping off) while in green mode, please insert filter back into unit within 30 seconds to make sure the counter is not reset. However, once the Filter Replacement Indicator has begun to show a red light (indicating the Replacement Period), do not remove the cartridge unless you intend to replace it. Once the filter has entered the Replacement Warning Period, inserting a cartridge will automatically reset the Filter Replacement Indicator.

**NOTE:** Only the Brita® Faucet Replacement Filters will fit the Brita® Faucet Filtration System.

## Early filter replacement and manual reset of the Filter Replacement Indicator

Brita® Faucet Replacement Filters have an extra layer that help prevent premature clogging due to sediment buildup. However, it may still be possible that very high sediment in your tap water may cause your filter to prematurely clog with sediment. This may reduce the water flow from the system and require an earlier filter change. If, for any reason, you need to replace your filter early (before the red flashing signal from the indicator), remove the old cartridge (see directions on Replacing Filter Cartridge) and prepare to insert a new one (Step 4).

To manually reset the indicator for your new cartridge, wait at least 30 seconds after the old filter has been removed before inserting the new one. This will ensure the counter to reset properly.

---

### For optimal use, care and safety

- The Brita® Faucet Filtration System is not intended to purify water. Do not use this product if you have a compromised immune system or if you have a history of kidney disease. If you have a compromised immune system, you should not use this product. If you have a history of kidney disease, you should not use this product.

- The system and installation must comply with state regulations.
  - Use with cold water only. Do not run hot water (above 100°F/38°C) through the filter, as it may damage the filter.
  - Do not push filter cartridge release button during filtration.
  - Prior to each use, let water run through the filter for 30 seconds to activate the filter. If the filter has not been used for a few days, let the water run for 30 seconds before using it.
  - For optimal system performance and highest quality, please replace the filter promptly when the Filter Replacement Indicator signals.
  - Clean the exterior of the Brita® Faucet Filtration System with a damp soft sponge or cloth. You may use a mild dishwashing detergent. Do not use abrasive cleaners or scouring pads. Do NOT put any parts in the dishwasher.
  - Only water from the filtered water port is filtered. All other water is unfiltered.
  - Do not use the Brita® Faucet Filtration System if your tap water temperature exceeds 170°F/77°C. Very hot water can damage the system.
- 

## **TROUBLESHOOTING**

PROBLEM	POSSIBLE CAUSE	POSSIBLE SOLUTION
<p>You are unable to attach the system to your faucet.</p>	<p>See Step 2 of Installation in Five Easy Steps to determine if you need to use an adapter. Check to see that you have correctly inserted the proper adapter and washer.</p>	<p>Adapters provided do not fit your faucet. Please contact us at 1-800-24-BRITA (U.S.) or 1-800-387-6940 (Canada).</p>
<p>Water leaks or sprays from connection at faucet.</p>	<p>Check to see that you placed the washer between the faucet and the adapter. Check to see that the mounting collar is tight and the threading is aligned with the faucet or adapter threading.</p>	<p>Only water from filter port is filtered. All other water is unfiltered.</p>
<p>Water leaks or sprays from the system itself.</p>	<p>Make sure the filter cartridge is locked into place.</p>	<p>Water leaking or spraying from system may not be filtered. Only water from filter port is filtered. All other water is unfiltered.</p>
<p>Flow rate of filtered water slows.</p>	<p>Remove the system from the faucet and clean the sediment from the strainer in the mounting collar. If flow rate of filtered water remains slow, replace filter cartridge. Although Brita® Faucet Replacement Filters have an extra layer to reduce sediment buildup, very high sediment in your water may cause the system to prematurely clog before the typical end of filter life. The clogging means that your Brita® Faucet Replacement Filter is removing the sediment from your tap water.</p>	<p>See directions for early filter replacement and manual reset of the Filter Replacement Indicator on page 5.</p>



<b>Filter Replacement Indicator does not reset with new cartridge insertion.</b>	<b>Make sure the filter cartridge is locked into place. If you replaced the cartridge before the indicator light flashed red, you need to manually reset the Filter Replacement Indicator.</b>	<b>See directions for early filter replacement and manual reset of the filter replacement indicator on page 5.</b>
<b>Filter Replacement Indicator does not illuminate.</b>	-	<b>Please contact us at 1-800-24-BRITA (U.S.) or 1-800-387-6940 (Canada).</b>

For any other product questions, please contact us at 1-800-24-BRITA (U.S.) or 1-800-387-6940 (Canada) if you need any assistance.

---

### **LIMITED ONE YEAR WARRANTY**

Brita LP (warrantor) warrants the Brita® Faucet Filtration System (FF-100) against original defects in material and workmanship for a period of one year from date of purchase (except filter cartridge which is warranted for a period of 30 days), provided it is used in accordance with the instructions in the User's Guide. If for any reason the product proves defective within the year following its date of purchase, please call us at 1-800-24-BRITA (U.S.) or 1-800-387-6940 (Canada), and the unit will be repaired or replaced at no charge.

This warranty gives you specific legal rights, and you may also have other rights which vary from region to region. The warrantor assumes no responsibility for incidental or consequential damages, damages from misuse of the product or use of unauthorized attachments, or damages resulting from use of the product with a defective faucet. Some states or provinces do not allow the exclusion or limitation of incidental or consequential damages, so the above exclusion or limitation may not apply to you.

For service during or after the warranty period, or for questions on use of your Brita product, please call 1-800-24-BRITA (U.S.) or 1-800-387-6940 (Canada), Mon - Fri 9am - 5:30pm EST.

If you need assistance, please contact us at 1-800-24-BRITA (U.S.) or 1-800-387-6940 (Canada).

---

### **PERFORMANCE DATA SHEET**

**IMPORTANT NOTICE:** Read this Performance Data Sheet and compare the capabilities of this unit with your actual water treatment needs. It is recommended that, before purchasing a water treatment unit, you have your water supply tested to determine your actual water treatment needs.



# BRITA FAUCET FILTRATION SYSTEM MODEL FF-100 WITH FILTER FR-200

SUBSTANCE	REDUCTION						U.S. EPA Level <sup>1</sup> / NSF Max. Permissible Product Water Concentration	HEALTH CANADA GUIDELINE	TESTING PARAMETERS		
	Influent Challenge Concentration		Filter Effluent		Percent Reduction				Alkalinity (ppm CaCO <sub>3</sub> )	Temp. (°C)	pH
	Actual	NSF Target	Average	Maximum	Average	Minimum					
<b>NSF/ANSI Standard 53 – Health Effects</b>											
Asbestos	90 <sup>a</sup>	10–100 <sup>a</sup>	<0.17 <sup>a</sup>	<0.17 <sup>a</sup>	>99%	>99%	7 <sup>9</sup> /99% <sup>b</sup>	N.A.	N.A.	19	7.4
Lead	150 ppb	150±15 ppb	<1 ppb	<1 ppb	>99.3%	>99.3%	15 ppb <sup>f</sup> /10 ppb	10 ppb <sup>d</sup>	18	21	6.5
Lead	150 ppb	150±15 ppb	<1 ppb	<1 ppb	>99.3%	>99.3%	15 ppb <sup>f</sup> /10 ppb	10 ppb <sup>d</sup>	100	20	8.4
Alachlor	40 ppb	40±4 ppb	<1 ppb	<1 ppb	>97.5%	>97.5%	2 ppb	N.A.	N.A.	20	7.2
Atrazine	10 ppb	9±0.9 ppb	<0.5 ppb	<0.5 ppb	>95%	>95%	3 ppb	5 ppb <sup>d</sup>	N.A.	21	7.4
Benzene	15 ppb	15±1.5 ppb	<0.5 ppb	<0.5 ppb	>96.6%	>96.6%	5 ppb	5 ppb <sup>d</sup>	N.A.	21	7.6
Carbofuran	77 ppb	80±8 ppb	<1 ppb	<1 ppb	>98.7%	>98.7%	40 ppb	90 ppb <sup>d</sup>	N.A.	20	7.4
Carbon tetrachloride	14 ppb	15±1.5 ppb	<0.5 ppb	<0.5 ppb	>96.5%	>96.5%	5 ppb	2 ppb <sup>d</sup>	N.A.	20	7.4
Chlordane	42 ppb	40±4 ppb	0.4 ppb	2.0 ppb	98.9%	95.2%	2 ppb	N.A.	N.A.	20	7.3
Chlorobenzene	2.0 ppm	2.0±0.2 ppm	0.002 ppm	0.019 ppm	99.9%	99%	0.1 ppm	0.08 ppm <sup>d</sup>	N.A.	20	7.3
o-Dichlorobenzene	1.8 ppm	1.8±0.18 ppm	<0.0005 ppm	<0.0005 ppm	>99.9%	>99.9%	0.6 ppm	0.2 ppm <sup>d</sup>	N.A.	21	7.4
2,4-D	210 ppb	210±21 ppb	0.1 ppb	0.2 ppb	99.9%	99.9%	70 ppb	100 ppb <sup>d</sup>	N.A.	20	7.4
Endrin	6.6 ppb	6±0.6 ppb	<0.2 ppb	<0.2 ppb	>97%	>97%	2 ppb	N.A.	N.A.	21	7.6
Ethylbenzene	2.2 ppm	2.1±0.21 ppm	0.0007 ppm	0.0031 ppm	99.9%	99.8%	0.7 ppm	≤0.0024 ppm <sup>e</sup>	N.A.	21	7.4
Lindane	2.0 ppb	2±0.2 ppb	<0.02 ppb	<0.02 ppb	>99%	>99%	0.2 ppb	N.A.	N.A.	20	7.4
Methoxychlor	120 ppb	120±12 ppb	0.4 ppb	0.7 ppb	99.7%	99.3%	40 ppb	N.A.	N.A.	22	7.4
Simazine	11 ppb	12±1.2 ppb	1.4 ppb	4 ppb	87%	63%	4 ppb	10 ppb <sup>d</sup>	N.A.	20	7.6
Styrene	1.9 ppm	2.0±0.2 ppm	<0.0005 ppm	<0.0005 ppm	>99.9%	>99.9%	0.1 ppm	N.A.	N.A.	20	7.2
Tetrachloroethylene	16 ppb	15±1.5 ppb	<0.5 ppb	<0.5 ppb	>96.9%	>96.4%	5 ppb	30 ppb <sup>d</sup>	N.A.	20	7.4
Toluene	3.1 ppm	3.0±0.3 ppm	<0.0005 ppm	<0.0005 ppm	>99.9%	>99.9%	1 ppm	≤0.024 ppm <sup>e</sup>	N.A.	20	7.2
Toxaphene	16 ppb	15±1.5 ppb	<1 ppb	<1 ppb	>93.6%	>93.6%	3 ppb	N.A.	N.A.	20	7.3
Trichloroethylene	320 ppb	300±30 ppb	<0.5 ppb	<0.5 ppb	>99.8%	>99.8%	5 ppb	5 ppb <sup>d</sup>	N.A.	21	7.4
TTHM	390 ppb	450±90 ppb	4.6 ppb	22 ppb	98.7%	94.3%	80 ppb	100 ppb	N.A.	21	7.5
VOC	290 ppb	300±30 ppb	0.6 ppb	1.3 ppb	99.7%	99.5%	N.A.	N.A.	N.A.	20	7.3
<b>NSF/ANSI Standard 42 – Aesthetic Effects</b>											
Chlorine taste and odor	2.0 ppm	2.0±0.2 ppm	0.05 ppm	0.05 ppm	97.5%	97.4%	N.A./50% <sup>b</sup>	N.A.	N.A.	20	7.4
Particulate (Class I, 0.5–1.0 µm)	8,700,000 <sup>f</sup>	≥10,000 <sup>f</sup>	21,000 <sup>f</sup>	27,000 <sup>f</sup>	99.7%	99.6%	N.A./85% <sup>b</sup>	N.A.	N.A.	20	7.3



NSF/ANSI Standard 53 – Health Effects – Volatile organic chemicals (VOCs) included by surrogate testing*					
SUBSTANCE	Influent Challenge Concentration	Percent Reduction	NSF Maximum Permissible Product Water Concentration	U.S. EPA Level	Health Canada Guideline
Bromochloroacetonitrile	22 ppb	98%	0.5 ppb	N.A.	N.A.
Chloropicrin	15 ppb	99%	0.2 ppb	N.A.	N.A.
Dibromoacetonitrile	24 ppb	98%	0.6 ppb	N.A.	N.A.
Dibromochloropropane	52 ppb	>99%	0.02 ppb	0.2 ppb	N.A.
Dichloroacetonitrile	9.6 ppb	98%	0.2 ppb	N.A.	N.A.
<i>p</i> -Dichlorobenzene	40 ppb	>98%	1 ppb	75 ppb	5 ppb <sup>a</sup> /≤1 ppb <sup>b</sup>
1,2-Dichloroethane	88 ppb	95%	4.8 ppb	5 ppb	5 ppb <sup>a</sup>
1,1-Dichloroethylene	83 ppb	>99%	1 ppb	7 ppb	14 ppb <sup>a</sup>
<i>cis</i> -1,2-Dichloroethylene	170 ppb	>99%	0.5 ppb	70 ppb	N.A.
<i>trans</i> -1,2-Dichloroethylene	86 ppb	>99%	1 ppb	100 ppb	N.A.
1,2-Dichloropropane	80 ppb	>99%	1 ppb	5 ppb	N.A.
1,1-Dichloro-2-propanone	7.2 ppb	99%	0.1 ppb	N.A.	N.A.
<i>cis</i> -1,3-Dichloropropylene	79 ppb	>99%	1 ppb	N.A.	N.A.
Dinoseb	170 ppb	99%	0.2 ppb	7 ppb	N.A.
Ethylene dibromide	44 ppb	>99%	0.02 ppb	0.05 ppb	N.A.
Heptachlor	250 ppb	>99%	0.4 ppb	0.4 ppb	N.A.
Heptachlor epoxide	10.7 ppb	98%	0.2 ppb	0.2 ppb	N.A.
Hexachlorobutadiene	44 ppb	>98%	1 ppb	N.A.	N.A.
Hexachlorocyclopentadiene	60 ppb	>99%	0.002 ppb	50 ppb	N.A.
Pentachlorophenol	96 ppb	>99%	1 ppb	1 ppb	60 ppb <sup>a</sup> /≤30 ppb <sup>b</sup>
1,1,2,2-Tetrachloroethane	81 ppb	>99%	1 ppb	N.A.	N.A.
Tribromoacetic acid	42 ppb	>98%	1 ppb	N.A.	N.A.
Trichloroacetonitrile	15 ppb	98%	0.3 ppb	N.A.	N.A.
1,2,4-Trichlorobenzene	160 ppb	>99%	0.5 ppb	70 ppb	N.A.
1,1,1-Trichloroethane	84 ppb	95%	4.6 ppb	200 ppb	N.A.
1,1,2-Trichloroethane	150 ppb	>99%	0.5 ppb	5 ppb	N.A.
2,4,5-TP (Silvex)	270 ppb	99%	1.6 ppb	50 ppb	N.A.
1,1,1-Trichloro-2-propanone	8.2 ppb	96%	0.3 ppb	N.A.	N.A.
Xylenes	70 ppb	>99%	1 ppb	10 ppm	≤300 ppb <sup>b</sup>

\* Chloroform was used as the surrogate chemical for VOC reduction claims.

<sup>b</sup> Health Canada Aesthetic Objective (AO).

<sup>a</sup> Health Canada Maximum Acceptable Concentration (MAC).

N.A. = Not applicable.

NSF/ANSI Standard 401 – Emerging Compounds/Incidental Contaminants				
SUBSTANCE	Overall Percent Reduction	Influent Challenge Concentration	U.S. EPA Level/NSF Maximum Permissible Product Water Concentration	Health Canada Guideline
Bisphenol A	99.1%	2000±400 ppt	300 ppt	N.A.
Estrone	96.5%	140±28 ppt	20 ppt	N.A.
Ibuprofen	94.9%	400±80 ppt	60 ppt	N.A.
Naproxen	96.1%	140±28 ppt	20 ppt	N.A.
Nonyl phenol	96.2%	1400±280 ppt	200 ppt	N.A.
Phenytoin	95.6%	200±40 ppt	30 ppt	N.A.

Performance testing conducted by NSF International. This system has been tested according to NSF/ANSI Standards 42, 53 and 401 for reduction of the substances listed. The concentration of each of the indicated substances in water entering the systems was reduced to a concentration less than or equal to the permissible limit for water leaving the system, as specified in NSF/ANSI Standards 42, 53 and 401.

System tested at 60 psig (414 kPa) using a minimum flow rate of 0.58 gpm (2.19 L/min). Testing was performed under standard laboratory conditions. The contaminants or other substances removed or reduced by this water treatment system are not necessarily in all users' water. Filter performance may vary based on local water conditions.

## Key Specifications:

- **Capacity:** 100 gallons (378 liters)
- **Service Flow Rate:** 0.58 gpm (2.19 L/min)
- **Working Pressures (min./max.):** 20 psig/100 psig (138 kPa/689 kPa)
- **Filtered Water Temperature (min./max.):** 34°F/100°F (1°C/38°C)
- **Electrical Requirements:** None

*Please refer elsewhere in this User's Guide for the proper installation, conditioning, use and care requirements and an explanation of how the filter replacement indicator functions. Maintenance according to the manufacturer's instructions is essential for proper filter performance. Filter life should not exceed 100 gallons. If a decrease in flow rate is noticed, replace the filter earlier. Replacement filters (model FR-200) are available in one-pack, two-pack, three-pack and four-pack sizes. For more information visit [brita.com](http://brita.com) (USA) or [brita.ca](http://brita.ca) (Canada).*

The Brita Faucet Filtration System has been tested and certified by NSF International against NSF/ANSI Standards 42, 53 and 401 for the reduction of the claims specified on the Performance Data Sheet.

The Brita Faucet Filtration System has been tested and certified by the WQA against NSF/ANSI Standards 42, 53 and 401 for the reduction of the claims specified on the Performance Data Sheet.

**Distributed in U.S.A. for:** Brita LP, 1221 Broadway, Oakland, CA 94612; 1-800-242-7482

**Distributed in Canada by:** Brita Canada Corporation, 150 Biscayne Crescent, Brampton, ON L6W 4V3; 1-800-387-6940

### Warning

This content is compiled from multiple sources and is provided for reference purposes only. It may not be complete or fully applicable to all situations. If you are unable to resolve your issue, please contact the product manufacturer or an authorized service provider for official support.