

**OWNER'S MANUAL TOP LOADING WASHING MACHINE**



# CONTROL PANEL AND FEATURES



\*Appearance may vary depending on model.

## 1. POWER

Press to turn on/off or to stop/cancel a cycle.

## 2. CYCLE KNOB

Turn knob to select desired cycle.

## 3. START/PAUSE

Press and hold the Start/Pause button for 1 second to start the cycle. The Sense LED will stop flashing and turn solid to indicate the cycle is started. Press during a cycle to pause cycle and unlock lid. You will also hear the lid lock and unlock.

NOTE: If machine is spinning it may take longer to unlock lid.

## 4. CYCLE MODIFIERS (Not all modifiers are available on all cycles)

### TEMPERATURE

Turn knob to choose the appropriate temperature for the cycle (Tap Cold, Cold, Cool, Warm, or Hot).

### DEEP FILL AND RINSE

Use one of the Deep Fill (Med, Max, Max + Extra Rinse) options to automatically add more water to your wash cycle. You can also use these options to reduce the likelihood of white residue on dark clothing. By default, every cycle uses one rinse phase. To add a second rinse phase, use one of the Extra Rinse options (Max + Extra Rinse, Auto + Extra Rinse).

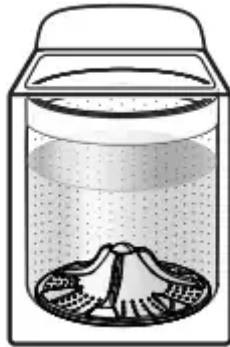
**IMPORTANT:** Either Auto (+Extra Rinse) or Max (+Extra Rinse) must be selected when using fabric softener.

**NOTE:** If the washer detects an out-of-balance condition it may pause and attempt to correct the situation. During this time the Sense and Rinse/Spin status indicators will both briefly illuminate.

**WARNING:** Do not wash water-resistant or water repellent-type clothing. Failure to closely follow these instructions may result in an abnormal vibrating and out-of-balance condition that could result in physical injury, property damage, and/or appliance damage.

## MORE WATER WHEN YOU WANT IT

### AUTO SENSING AND DEEP FILL



- When you select Auto, the washer will adjust the water level to the optimal amount for a High Efficiency wash of the detected load. Select a Deep Fill option of Med or Max to automatically add more water to your wash cycle.
- It is recommended to use Bulky Items cycle with the Deep Fill - Max option for loads where maximum water level is desired. Expect longer cycle times due to extended fill duration when using Deep Fill options.

## CLEANING WITH LESS WATER



- The washer has been designed and optimized to provide a thorough cleaning using less water to conserve energy and resources. As the washer dampens and moves the load, the level of the items will settle in the basket. This is normal, and does not indicate that more items should be added.
- **IMPORTANT:** You will not see a full basket of water as with older, less efficient washing machines. It is normal for some of the load to be above the water line.

## CYCLE GUIDE

Settings shown are selectable for that cycle. Recommended settings for each cycle are shown in Bold. For the best fabric care, choose the cycle that best fits the load being washed. Not all cycles and options are available on all models. Please refer to garment label instructions for best care.



Items to wash:	Cycle:	Temperature*:	Deep Fill & Rinse	Average Cycle Time (minutes)	Cycle Details:
Cottons, linens, and mixed garment loads.	Normal	Hot <b>Warm</b> Cool Cold Tap Cold	Max + ExtraRinse Auto+ExtraRinse Max Med <b>Auto</b>	60	Use this cycle for normally soiled cottons and mixed fabric loads.
Lightly soiled, small-sized mixed garment loads.	Quick Wash	Hot <b>Warm</b> Cool Cold Tap Cold	Max + ExtraRinse Auto+ExtraRinse Max Med <b>Auto</b>	30	Use this cycle to quickly wash lightly soiled garments and small loads. The Quick Wash cycle uses shorter periods of more intense washing to clean items quickly.
Heavily soiled white fabrics.	Whites	<b>Hot</b> Warm Cool Cold Tap Cold	Max + ExtraRinse <b>Auto+ExtraRinse</b> Max Med Auto	75	This cycle, when used with chlorine bleach, improves whitening of soiled white fabrics.
Colored cottons and mixed garment loads.	Cold Wash	Hot Warm Cool Cold <b>Tap Cold</b>	Max + ExtraRinse Auto+ExtraRinse Max <b>Med</b> Auto	65	Use this cycle for a cold water wash on colored cottons and mixed garment loads.
Overly soiled garments,	Heavy Duty	<b>Hot</b> Warm Cool	Max + ExtraRinse Auto+ExtraRinse Max	75	Use this cycle for heavily



items that need additional cleaning effort.		Cold Tap Cold	<b>Med</b> Auto		soiled or sturdy items.
No clothes in washer	Clean Washer with affresh®	<b>Hot</b>	N/A	60	Use this cycle every 30 washes to keep the inside of your washer fresh and clean. Use with affresh® Washer Cleaner tablet or liquid chlorine bleach to thoroughly clean the inside of your washer. <b>IMPORTANT:</b> Do not place garments or other items in the washer during the Clean Washer with affresh® cycle. This cycle must be used with an empty basket.
Hand-washed items or dripping-wet items.	Drain & Spin	N/A	N/A	10	Use this cycle for loads requiring an additional spin-out after a cycle completes, to reduce drying times, or to finish a cycle after a power



					interruption. The default cycle will only drain and spin.
Swimsuits and items requiring rinsing without detergent.	Rinse & Spin*	<b>Tap Cold</b>	Max + ExtraRinse <b>Auto+ExtraRinse</b>	28	*NOTE: Must select Drain & Spin cycle and Extra Rinse option. Combines a rinse and high-speed spin for loads requiring an additional rinse cycle or to complete a load after power interruption. Also use for loads that require rinsing without detergent such as swimsuits.
Heavily soiled, colorfast fabrics	Sanitize with Oxi	Hot Warm Cool Cold Tap Cold	Max + ExtraRinse Auto+ExtraRinse Max Med Auto	90	*Extra Rinse is on by default and cannot be turned off in this cycle.
Machine-wash silks, handwash fabrics.	Delicates	Hot Warm Cool Cold Tap Cold	Max + Extra Rinse Auto + Extra Rinse Rinse Max Med Auto	47	Use this cycle to wash lightly soiled items indicating "Machine Washable Silks" or "Gentle" cycle on the care label. Place small items in mesh



					garment bags before washing. This cycle uses a higher pre-set water level.
Large items such as sheets, sleeping bags, small comforters, jackets, small washable rugs.	Bulky Items	Hot Warm Cool Cold Tap Cold	Max + Extra Rinse Max	56	Use this cycle to wash large items such as jackets and small comforters. The washer will fill with enough water to wet down the load before the wash portion of the cycle begins. This cycle uses a higher default water level than other cycles.

\*All rinses are cold. NOTE: Exact cycle times can vary based on a variety of conditions and cycle options chosen. Note About Default Settings: Normal cycle is recommended for washing normally soiled cotton or linen clothes. This clothes washer's government energy certifications were based on the Normal cycle with all wash temperature selections and water fill levels offered in the cycle. It was tested as a User Adjustable Adaptive Water Fill Control System clothes washer. The settings as shipped are Normal cycle, Warm Wash Temp and Auto Water level, and Auto Rinse.

## WARNING

### Fire Hazard

Never place items in the washer that are dampened with gasoline or other flammable fluids.

No washer can completely remove oil.

Do not dry anything that has ever had any type of oil on it (including cooking oils).

Doing so can result in death, explosion, or fire.

### Helpful Tips:

- Use mesh garment bags to help avoid tangling when washing delicate or small items.

- Turn knits inside out to avoid pilling. Separate lint-takers from lint-givers. Synthetics, knits, and corduroy fabrics will pick up lint from towels, rugs, and chenille fabrics.

**NOTE:**

- Always read and follow fabric care label instructions to avoid damage to your garments.
- The washer will not start or fill with the lid open.

**Wash Temp Description**

Wash Temp	Description	Suggested Fabrics
Hot	Some cold water is added to save energy. This will be cooler than your hot water heater setting.	Whites and pastels Durable items Heavy soils
Warm	Some cold water may be added, so this will be cooler than what your previous washer provided.	Bright colors Moderate to light soils
Cool	Warm water may added to assist in soil removal and to help dissolve detergents.	Colors that bleed or fade Light soils
Cold	This is the temperature from your faucet. If your tap cold water is very cold, warm water may be added to assist in soil removal and to help dissolve detergents.	Dark colors that bleed or fade Light soils
Tap Cold	This is the temperature from your faucet.	Dark colors that bleed or fade Light soils

**Manual Soak**

If you would like to manually soak your garments at any time during the wash portion of the cycle, press the Start/Pause button and leave the lid closed. Once your desired soak time has elapsed, press and hold the Start/Pause button to continue the cycle. As long as the lid remains closed, your soak time can be longer than 10 minutes. However, if the lid is opened during the soak and remains open for more than 10 minutes, the water will pump out automatically and the cycle will cancel.



## Sort and prepare your laundry

- Empty pockets, Loose change, buttons, or any small object can pass under the agitator and become trapped, causing unexpected sounds.
- Sort items by recommended cycle, water temperature, and colorfastness.
- Separate heavily soiled items from lightly soiled.
- Separate delicate items from sturdy fabrics.
- Do not dry items if stains remain after washing, because heat can set stains into fabric.
- Treat stains promptly.
- Close zippers, fasten hooks, tie strings and sashes, and remove non-washable trim and ornaments.
- Mend rips and tears to avoid further damage to items during washing.

## WASHER SAFETY

Your safety and the safety of others are very important.

We have provided many important safety messages in this manual and on your appliance. Always read and obey all safety messages.

[IMAGE] This is the safety alert symbol.

This symbol alerts you to potential hazards that can kill or hurt you and others.

All safety messages will follow the safety alert symbol and either the word "DANGER" or "WARNING." These words mean:

[IMAGE] You can be killed or seriously injured if you don't immediately follow instructions.

[IMAGE] You can be killed or seriously injured if you don't follow instructions.

All safety messages will tell you what the potential hazard is, tell you how to reduce the chance of injury, and tell you what can happen if the instructions are not followed.

## IMPORTANT SAFETY INSTRUCTIONS

**WARNING:** To reduce the risk of fire, electric shock, or injury to persons when using your appliance, follow basic precautions, including the following:

- Read all instructions before using the appliance.
- Do not wash articles that have been previously cleaned in, washed in, soaked in, or spotted with gasoline, dry-cleaning solvents, or other flammable or explosive substances, as they give off vapors that could ignite or explode.
- Do not add gasoline, dry-cleaning solvents, or other flammable or explosive substances to the wash water. These substances give off vapors that could ignite or explode.

- Under certain conditions, hydrogen gas may be produced in a hot-water system that has not been used for 2 weeks or more. **HYDROGEN GAS IS EXPLOSIVE.** If the hot-water system has not been used for such a period, before using a washing machine, turn on all hot-water faucets and let the water flow from each for several minutes. This will release any accumulated hydrogen gas. As the gas is flammable, do not smoke or use an open flame during this time.
- Do not allow children to play on or in the appliance. Close supervision of children is necessary when the appliance is used near children.
- Before the appliance is removed from service or discarded, remove the door.
- Do not reach into the appliance if the tub or agitator is moving.
- Do not install or store this appliance where it will be exposed to the weather.
- Do not tamper with controls.
- Do not repair or replace any part of the appliance or attempt any servicing unless specifically recommended in the user-maintenance instructions or in published user-repair instructions that you understand and have the skills to carry out.
- Do not use replacement parts that have not been recommended by the manufacturer (e.g. parts made at home using a 3D printer).
- See the Installation Instructions for grounding requirements and installation.

## **SAVE THESE INSTRUCTIONS**

### **WARNING**

Certain internal parts are intentionally not grounded and may present a risk of electric shock only during servicing.

Service Personnel - Do not contact the thermostat bracket while the appliance is energized.

## **CHOOSING THE RIGHT DETERGENT**

Use only High Efficiency detergents. The package will be marked "HE" or "High Efficiency." Low-water washing creates excessive sudsing with a non-HE detergent. Using non-HE detergent will likely result in longer cycle times and reduced rinsing performance. It may also result in component malfunction and, over time, buildup of mold or mildew. HE detergents should be low-sudsing and quick-dispersing to produce the right amount of suds for the best performance. They should hold soil in suspension so it is not redeposited onto clean clothes. Not all detergents labeled as High Efficiency are identical in formulation and their ability to reduce suds. For example, natural, organic, or homemade HE detergents may generate a high level of suds. Always follow the detergent manufacturer's instructions to determine the amount of detergent to use. Do not go over the Max Line on the dispenser. See Quick Start Guide for more information.

# WASHER MAINTENANCE AND CARE

## Water Inlet Hoses

Replace inlet hoses after 5 years of use to reduce the risk of hose failure. Periodically inspect and replace inlet hoses if bulges, kinks, cuts, wear, or leaks are found.

When replacing your inlet hoses:

- Mark the date of replacement on the label with a permanent marker.
- Check that the old washers are not stuck on the washer inlet valves.
- Use new washers in the new inlet hoses to ensure a proper seal.

NOTE: This washer may not include inlet hoses. See the Installation Instructions for more information.

## Washer Care

### Recommendations to help keep your washer clean and performing at its best

1. Always use High Efficiency (HE) detergents and follow the HE detergent manufacturer's instructions regarding the amount of HE detergent to use. Never use more than the recommended amount because that may increase the rate at which detergent and soil residue accumulate inside your washer, which in turn may result in undesirable odor.
2. Use warm and hot wash water settings sometimes (not exclusively cold water washes), because they do a better job of controlling the rate at which soils and detergent accumulate.
3. Always leave the washer lid open between uses to help dry out the washer and prevent the buildup of odor-causing residue.

## Cleaning your top-loading washer

Read these instructions completely before beginning the routine cleaning processes recommended below. This Washer Maintenance Procedure should be performed, at a minimum, once per month or every 30 wash cycles, whichever occurs sooner, to control the rate at which soils and detergent may otherwise accumulate in your washer.

## Cleaning the inside of the washer

To keep your washer odor-free, follow the usage instructions provided above and use this recommended monthly cleaning procedure:

### Recommended cycle for cleaning the Washer

Some models have a Clean Washer cycle that uses higher water volumes in combination with affresh® Washer Cleaner or liquid chlorine bleach to clean the inside of the washer.

If your model does not have a Clean Washer cycle, refer to the online Cycle Guide for the optimal cycle for cleaning the inside of the washer. Use this cycle with affresh® Washer Cleaner or liquid chlorine bleach as described below.

**Description of Clean Washer with affresh® cycle operation:**

1. This cycle will fill to a water level higher than in normal wash cycles to provide rinsing at a level above the water line for normal wash.
2. During this cycle, there will be some agitation and spinning to increase the removal of soils.

After this cycle is complete, leave the lid open to allow for better ventilation and drying of the washer interior.

**Begin procedure**

**1. affresh® Washer Cleaner cycle procedure (recommended for best performance):**

1. Open the washer lid and remove any clothing or items.
2. Place an affresh® Washer Cleaner tablet in the bottom of the washer basket.
3. Do not place an affresh® Washer Cleaner tablet in the detergent dispenser.
4. Do not add any detergent or other chemical to the washer when following this procedure.
5. Close the washer lid.
6. Select the cycle recommended for cleaning the inside of the washer.
7. Press the START button to start the cycle.

NOTE: For best results, do not interrupt cycle. If cycle must be interrupted, press POWER/CANCEL. (For models with no Power/Cancel button, press and hold START/PAUSE for three seconds.) After the cycle has stopped, run a Rinse & Spin cycle to rinse cleaner from washer.

**2. Chlorine bleach procedure (alternative):**

1. Open the washer lid and remove any clothing or items.
2. Add 1 cup (236 mL) of liquid chlorine bleach to the bleach compartment. NOTE: Use of more liquid chlorine bleach than is recommended above could cause washer damage over time.
3. Close the washer lid.
4. Do not add any detergent or other chemical to the washer when following this procedure.
5. Select the cycle recommended for cleaning the inside of the washer.
6. Press the START button to start the cycle.

NOTE: For best results, do not interrupt cycle. If cycle must be interrupted, press POWER/CANCEL. (For models with no Power/Cancel button, press and hold START/PAUSE for three seconds.) After the cycle has stopped, run a Rinse & Spin cycle to rinse cleaner from washer.



## **Cleaning the dispensers**

After a period of using your washer, you may find some residue buildup in the washer's dispensers.

**IMPORTANT:** Dispensers are not dishwasher-safe.

### **For non-removable dispensers:**

To remove residue from the dispensers, wipe them with an affresh® Machine Cleaning Wipe or a damp cloth and towel dry. Do not attempt to remove the dispensers or trim for cleaning. The dispensers and trim are not removable.

### **For removable dispensers:**

If your model has a dispenser drawer, press tab(s) to remove the drawer and clean it with an affresh® Machine Cleaning Wipe or a damp cloth and towel dry before or after you run the Clean Washer cycle. Use an all-purpose surface cleaner, if needed.

## **Cleaning the outside of the washer**

**IMPORTANT:** To avoid damaging the washer's finish, do not use abrasive products.

Use an affresh® Machine Cleaning Wipe, a soft, damp cloth, or sponge to wipe away any spills. Use only mild soaps or cleaners when cleaning external washer surfaces.

## **Non-Use and Vacation Care**

Operate your washer only when you are home. If moving, or not using your washer for a period of time, follow these steps:

1. Unplug or disconnect power to washer.
2. Turn off water supply to washer to avoid flooding due to water pressure surge.

## **Winter Storage Care**

**IMPORTANT:** To avoid damage, install and store washer where it will not freeze. Because some water may stay in hoses, freezing can damage washer. If storing or moving during freezing weather, winterize your washer.

### **To winterize washer:**

1. Shut off both water faucets; disconnect and drain water inlet hoses.
2. Put 1 L (1 quart) of R.V.-type antifreeze in basket and run washer on Rinse & Spin cycle for about 30 seconds to mix antifreeze and remaining water.
3. Unplug washer or disconnect power.

## **Transporting Your Washer**

1. Shut off both water faucets. Disconnect and drain water inlet hoses.

2. If washer will be moved during freezing weather, follow "Winter Storage Care" directions before moving.
3. Disconnect drain hose from drain system and drain any remaining water into a pan or bucket. Disconnect drain hose from back of washer.
4. Unplug power cord.
5. Place inlet hoses and drain hose inside washer basket.
6. Drape power cord over edge and into washer basket.
7. Place original shipping materials back inside washer. If you do not have shipping materials, place heavy blankets or towels into basket opening. Close lid and place tape over lid and down front of washer. Keep lid taped until washer is placed in new location. Transport washer in the upright position.

## **Reinstalling/Using Washer Again**

[IMAGE]

To reinstall washer after nonuse, vacation, winter storage, or moving:

1. Refer to Installation Instructions to locate, level, and connect washer.
2. Before using again, run washer through the following recommended procedure:

### **To use washer again:**

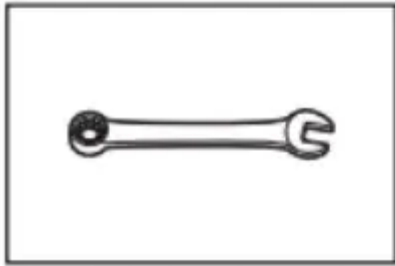
1. Flush water pipes and hoses.
2. Reconnect water inlet hoses.
3. Turn on both water faucets.
4. Plug into a grounded 3 prong outlet or reconnect power.
5. See your online Cycle Guide for information about which cycle(s) to run your washer through to clean washer and remove antifreeze, if used. Use only HE High Efficiency detergent. Use half the manufacturer's recommended amount for a medium-size load.

## **INSTALLATION INSTRUCTIONS REQUIREMENTS**

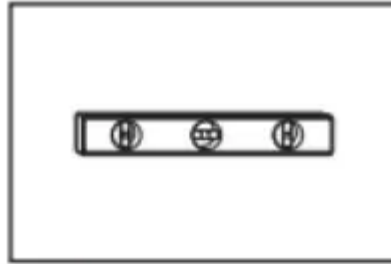
### **Tools and Parts**

Gather required tools and parts before starting installation.

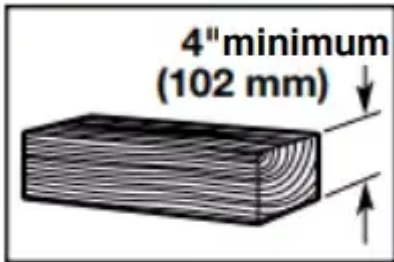
### **Tools Needed:**



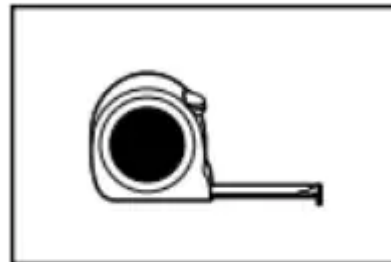
Adjustable or open end wrench 9/16" (14 mm)



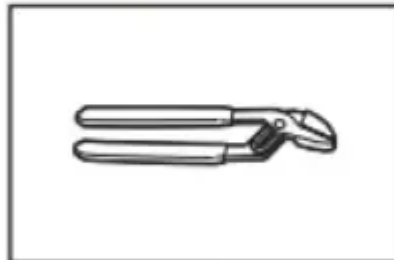
Level



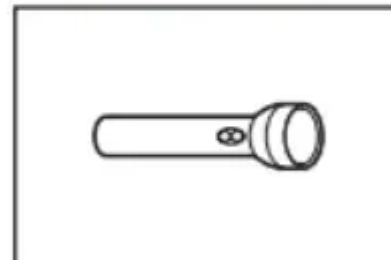
Wood block



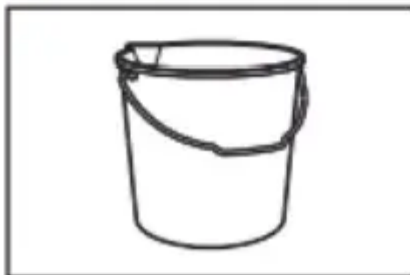
Ruler or measuring tape



Adjustable pliers that open to 1 3/4" (45 mm)



Flashlight



Bucket

### Parts Supplied:

NOTE: All parts supplied for installations are in the washer.



Drain hose with clamp, U-form, and cable tie

**Parts Needed: (if not supplied with washer)**



Inlet hoses with flat washers

**Alternate Parts: (not supplied with washer)**

Your installation may require additional parts. To order, please refer to the contact information referenced in your Quick Start Guide.

If you have:	You will need:
Overhead sewer	Standard 20 gallons (76 L) 39" (990 mm) tall drain tub or utility sink, sump pump, and connectors (available from local plumbing suppliers)
1" (25 mm) standpipe	2" (51 mm) diameter to 1" (25 mm) diameter standpipe adapter and connector kit
Drain hose too short	Extension drain hose and connector kit
Lint-clogged drain	Drain protector and connector kit

**Location Requirements**

Select proper location for your washer to improve performance and minimize noise and possible "washer walk." Install your washer in a basement, laundry room, closet, or recessed area.

**IMPORTANT:** Do not install, store, or operate washer where it will be exposed to weather or in temperatures below 32°F (0°C). Water remaining in washer after use may cause damage in low temperatures. See "Washer Maintenance and Care" for winterizing information.

Proper installation is your responsibility.

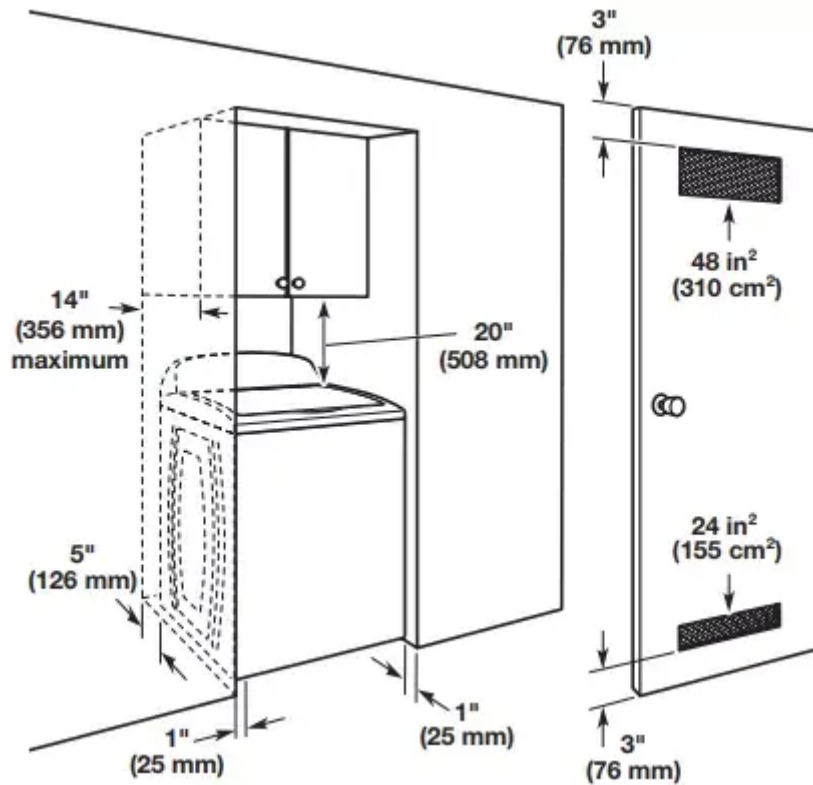
**You will need:**

- A water heater set to 120°F (49°C).
- A grounded electrical outlet located within 4 ft (1.2 m) of power cord on back of washer.
- Hot and cold water faucets located within 3 ft (0.9 m) of hot and cold water fill valves on washer, and water pressure of 20-100 psi (138-690 kPa).
- A level floor with maximum slope of 1" (25 mm) under entire washer. Installing on carpet or surfaces with foam backing is not recommended.



- Floor must support washer's total weight (with water and load) of 315 lbs (143 kgs).

### Recessed area or closet installation



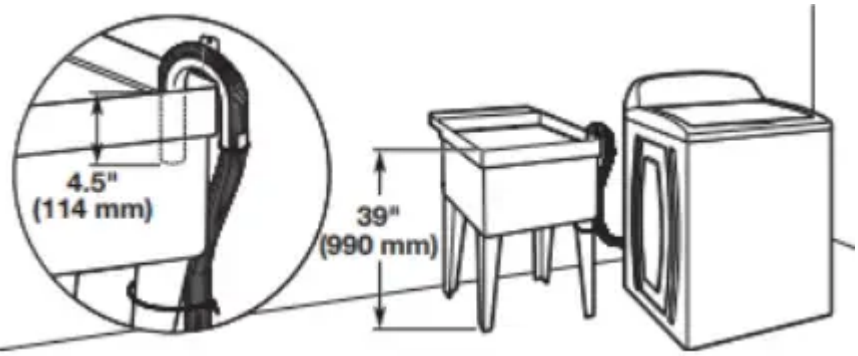
NOTE: All 27" wide washers should have 19" (482 mm) clearance, while all 29" wide washers should have 22" (559 mm) clearance.

All dimensions show recommended spacing allowed, except for closet door ventilation openings, which are the minimum required. This washer has been tested for installation with spacing of 0" (0 mm) clearance on the sides. Consider allowing more space for ease of installation and servicing, and spacing for companion appliances and clearances for walls, doors, and floor moldings. Add spacing of 1" (25 mm) on all sides of washer to reduce noise transfer. Doors must be lowered or equivalent and have at least 24 in<sup>2</sup> (155 cm<sup>2</sup>) bottom and 48 in<sup>2</sup> (310 cm<sup>2</sup>) top open area. \*For additional details (or information) specific to your model, refer to your Quick Start Guide.

### Drain System

Drain system can be installed using a floor drain, wall standpipe, floor standpipe, or laundry tub. Select the method you need.

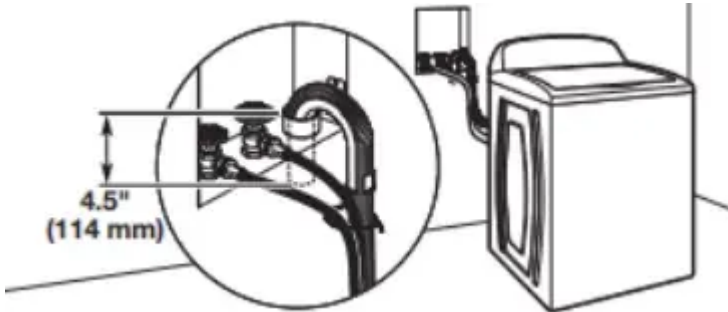
IMPORTANT: To avoid siphoning, no more than 4.5" (114 mm) of drain hose should be inside standpipe or below the top of wash tub. Secure drain hose with cable tie.



**Floor standpipe drain system**

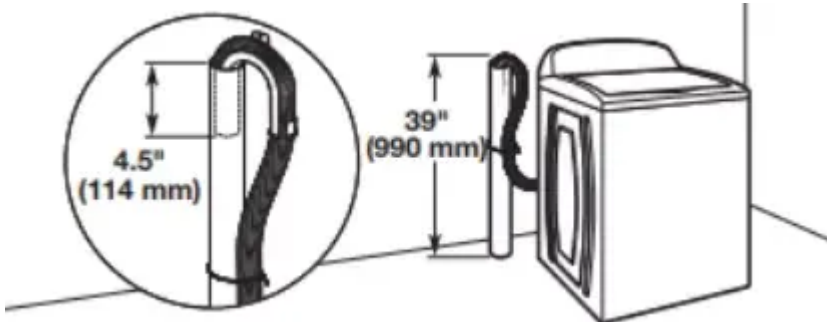
Minimum diameter for a standpipe drain: 2" (51 mm). Minimum carry-away capacity: 17 gallons (64 L) per minute. Top of standpipe must be at least 39" (990 mm) high; install no higher than 96" (2.44 m) from bottom of washer. If you must install higher than 96" (2.44 m), you will need a sump pump system.

**Wall standpipe drain system**



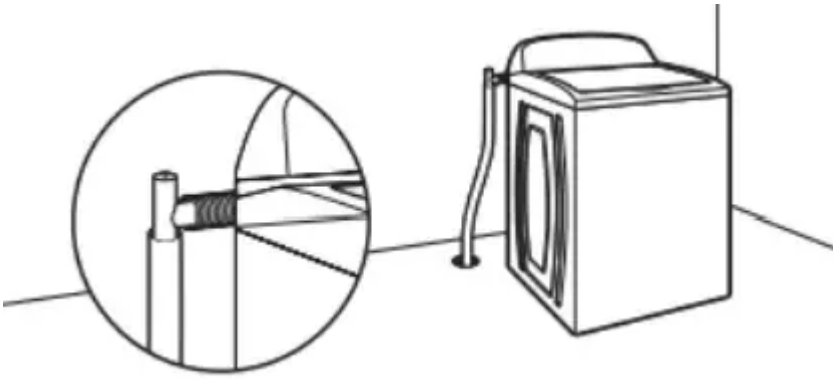
See requirements in the "Floor standpipe drain system" section.

**Laundry tub drain System**



Minimum capacity: 20 gallons (76 L). Top of laundry tub must be at least 39" (990 mm) above floor; install no higher than 96" (2.44 m) from bottom of washer.

## Floor Drain System



Floor drain system requires a Siphon Break Kit, 2 Connector Kits, and an Extension Drain Hose that may be purchased separately; refer to the Quick Start Guide for online ordering information. Minimum siphon break height: 28" (710 mm) from bottom of washer (additional hoses may be needed).

## Electrical Requirements

- A 120 V, 60 Hz, AC only, 15 or 20 A, fused electrical supply is required. A time-delay fuse or circuit breaker is recommended. It is recommended that a separate circuit breaker serving only this appliance be provided.
- This washer is equipped with a power supply cord having a 3-prong grounding plug.
- To minimize possible shock, the cord must be plugged into a mating, 3-prong, grounding-type outlet, grounded in accordance with local codes and ordinances. If a mating outlet is not available, it is the personal responsibility and obligation of the customer to have the properly grounded outlet installed by a qualified electrician.
- If codes permit and a separate ground wire is used, it is recommended that a qualified electrician determine that the ground path is adequate.
- Do not ground to a gas pipe.
- Check with a qualified electrician if you are not sure the washer is properly grounded.
- Do not have a fuse in the neutral or ground circuit.

## GROUNDING INSTRUCTIONS

For a grounded, cord-connected appliance: This appliance must be grounded. In the event of a malfunction or breakdown, grounding will reduce the risk of electric shock by providing a path of least resistance for electric current. This appliance is equipped with a cord having an equipment-grounding conductor and a grounding plug. The plug must be plugged into an appropriate outlet that is properly installed and grounded in accordance with all local codes and ordinances.

**WARNING:** Improper connection of the equipment-grounding conductor can result in a risk of electric shock. Check with a qualified electrician or serviceman if you are in doubt as to

whether the appliance is properly grounded. Do not modify the plug provided with the appliance: If it will not fit the outlet, have a proper outlet installed by a qualified electrician.

## SAVE THESE INSTRUCTIONS

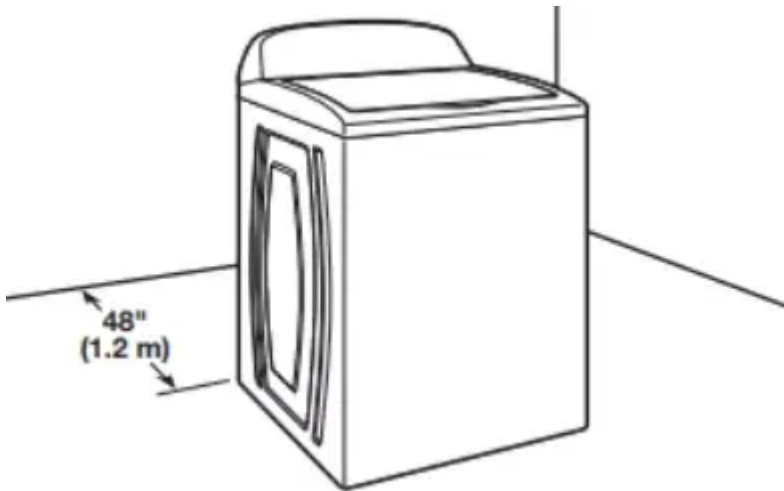
# INSTALLATION

## Unpacking

### Before you start: Remove shipping materials.

It is necessary to remove all shipping materials for proper operation and to avoid excessive noise from washer.

### 1. Move Washer

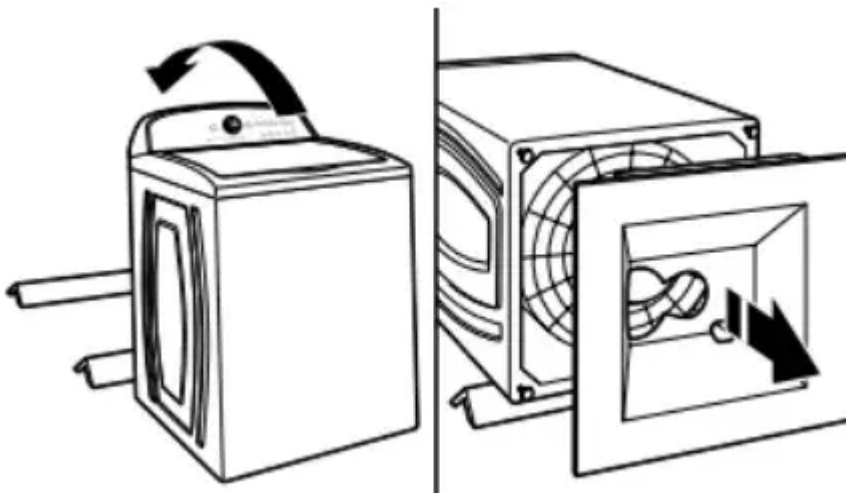


Move washer to within 4 ft (1.2 m) of its final location; it must be in a fully upright position.

NOTE: To avoid floor damage, set washer onto cardboard before moving it and make sure lid is taped shut.

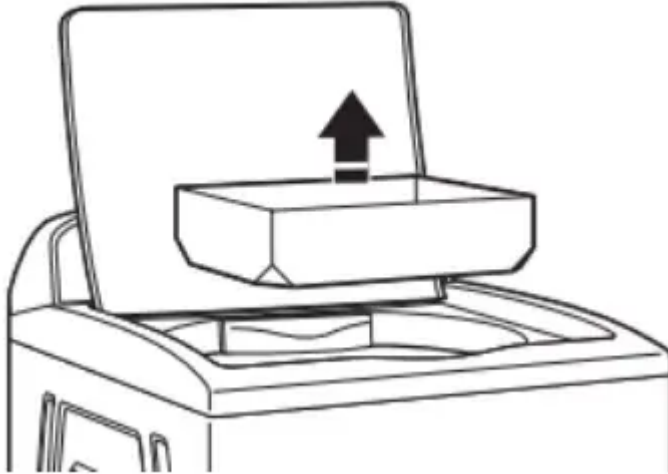
### 2. Remove shipping base

IMPORTANT: Removing shipping base is necessary for proper operation.



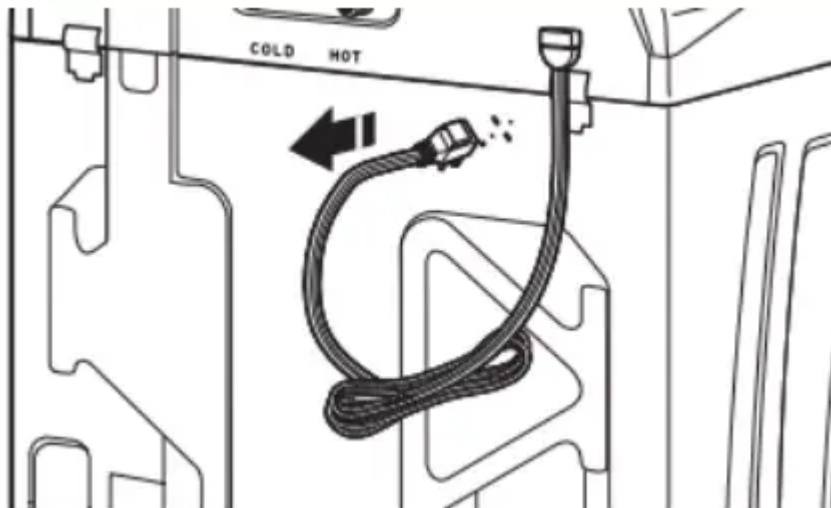
To avoid damaging floor, place cardboard supports from shipping carton on floor behind washer. Tip washer back and place on cardboard supports. Remove shipping base (some models require shipping base to be rotated 90° to the right before pulling off). Set washer upright.

### 3. Remove packaging material from inside washer



Remove tape from washer lid, open lid, and remove packaging material from washer tub. Be sure that all parts have been removed from inside washer. NOTE: Keep packaging material for inside washer in case you need to move washer later.

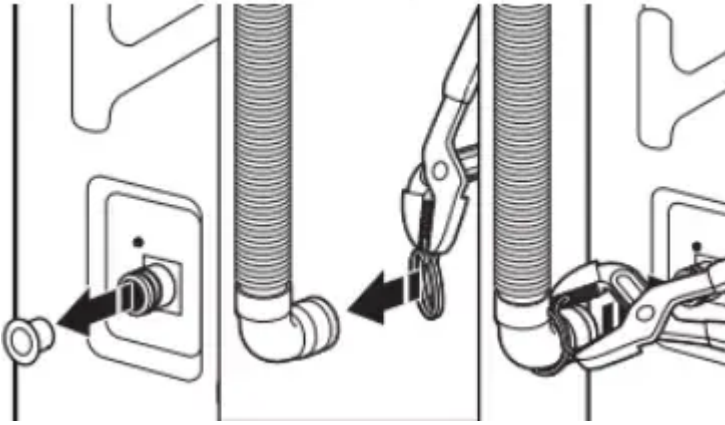
### 4. Free power cord



Firmly grasp power cord plug and pull to free from rear panel. Gently place power cord over console to allow free access to back of washer.

## Connect Drain Hose

### 5. Attach drain hose to drain port



If applicable, remove the red plastic plug from the black drain port on the back of the washer.

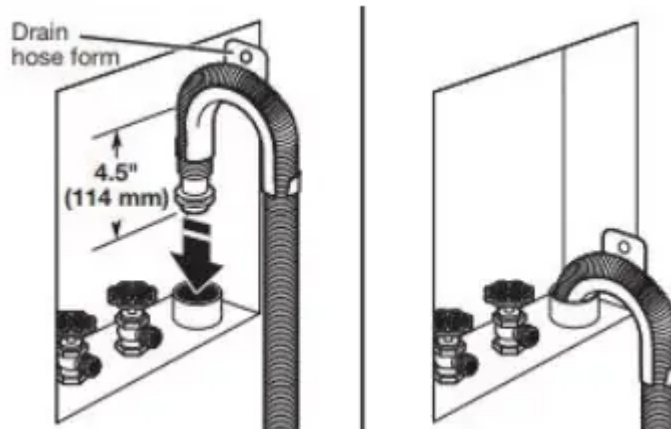
If clamp is not already in place on elbow end of drain hose, slide it over end as shown.

Squeeze clamp with pliers and slide black elbow end of drain hose onto black drain port and secure with clamp.

For a laundry tub or standpipe drain, go to step 6.

For a floor drain, remove the pre-installed drain hose form as shown in step 7. You may need additional parts with separate directions. See the "Alternate Parts" section.

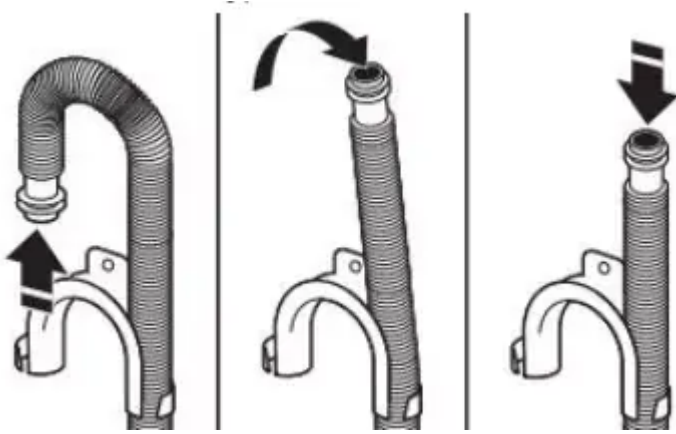
## 6. Place drain hose in standpipe



**IMPORTANT:** 4.5" (114 mm) of drain hose should be inside standpipe; do not force excess hose into standpipe or lay on bottom of laundry tub. Drain hose form must be used.

Place hose into standpipe (shown in picture) or over side of laundry tub.

## 7. Remove drain hose form (floor drain installations only)



For floor drain installations, you will need to remove the drain hose form from the end of the drain hose. You may need additional parts with separate directions. See "Tools and Parts."

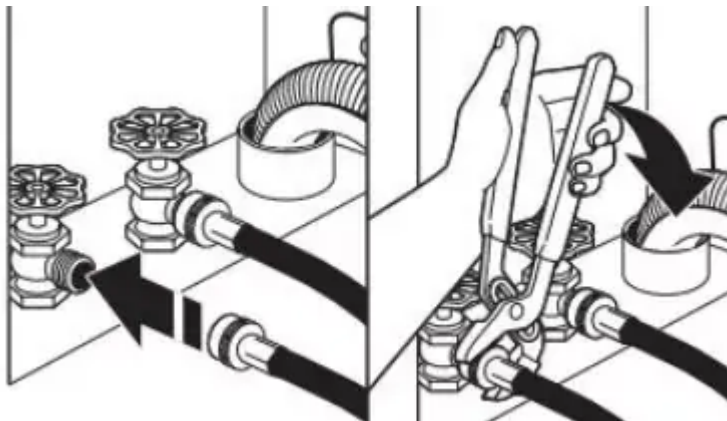
It is the responsibility of the installer to install and secure the drain hose into the provided plumbing/drain in a manner that will avoid the drain hose coming out of and leaking from the plumbing/drain.

## Connect Inlet Hoses

Washer must be connected to water faucets with new inlet hoses with flat washers (not provided). Do not use old hoses.

NOTE: Both hoses must be attached and have water flowing to inlet valves. If you are only connecting to a cold water faucet, you must use a Y-adapter (not provided).

### 8. Connect inlet hoses to water faucets



**IMPORTANT:** Do not overtighten hose or use tape or sealants on valve. Damage to the valves can result.

Attach hose to hot water faucet. Screw on coupling by hand until it is seated on washer. Use adjustable pliers to tighten couplings an additional two-thirds turn. Repeat this step with second hose for cold water faucet.

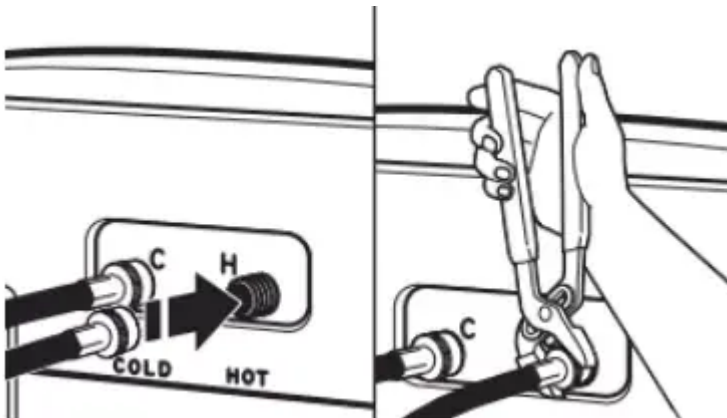
### 9. Clear water lines



Run water for a few seconds through hoses into a laundry tub, drainpipe, or bucket to avoid clogs. Water should run until clear.

Make note of which hose is connected to hot water to help in attaching hoses to washer correctly.

#### 10. Connect inlet hoses to washer

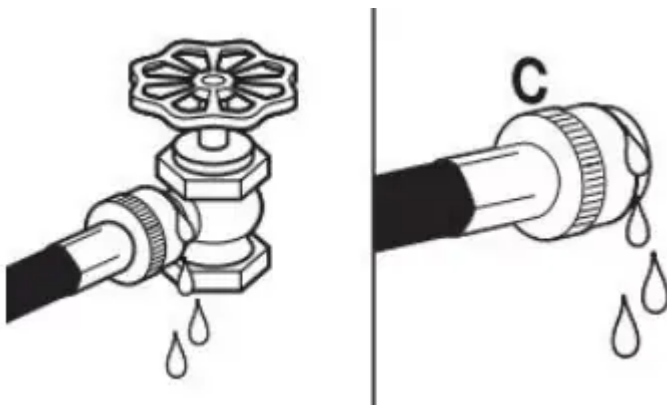


**IMPORTANT:** To reduce risk of hose failure, replace the hoses every 5 years. Record hose installation or replacement dates for future reference.

Do not overtighten hose or use tape or sealants on valve. Damage to the valves can result. Periodically inspect and replace hoses if bulges, kinks, cuts, wear, or leaks are found.

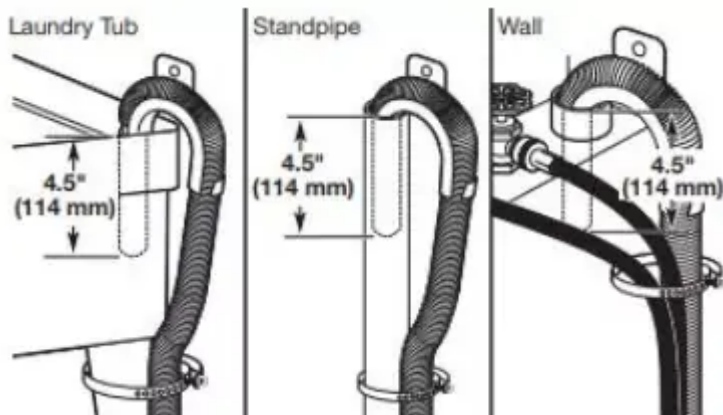
Attach hot water hose to red hot water inlet valve. Screw coupling by hand until it is snug. Use pliers to tighten couplings an additional two-thirds turn. Repeat with cold water inlet valve.

#### 11. Check for leaks



Turn on water faucets to check for leaks. A small amount of water may enter washer. It will drain later.

## 12. Secure drain hose



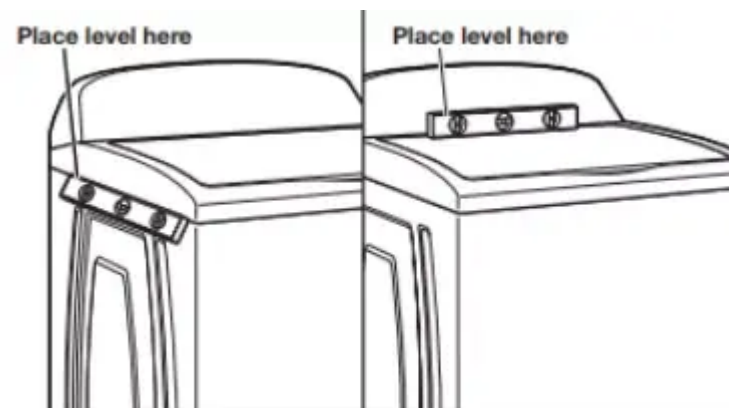
Secure drain hose to laundry tub leg, drain standpipe, or inlet hoses for wall standpipe with cable tie.

It is the responsibility of the installer to install and secure the drain hose into the provided plumbing/drain in a manner that will avoid the drain hose coming out of or leaking from the plumbing/drain.

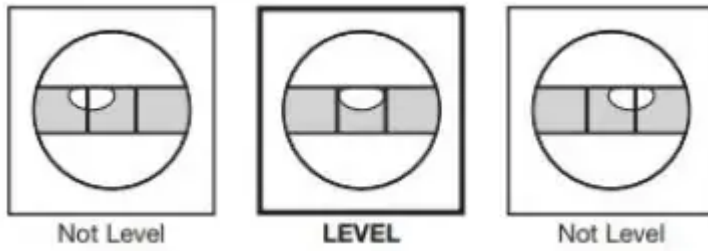
## Level Washer

NOTE: Level washer properly to reduce excess noise and vibration.

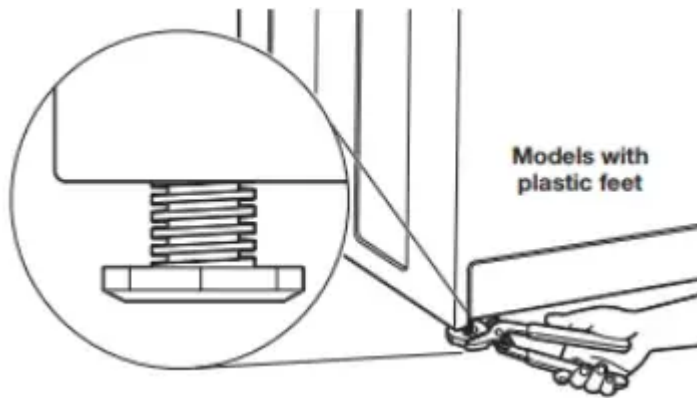
## 13. Check levelness of washer



Move the washer to its final location. Place a level on top edges of washer. Use side seam as a guide to check levelness of sides. Check levelness of front using lid, as shown. Rock washer back and forth to make sure all four feet make solid contact with floor. If washer is level, skip to step 15.



#### 14. Adjust leveling feet



#### **If washer is not level:**

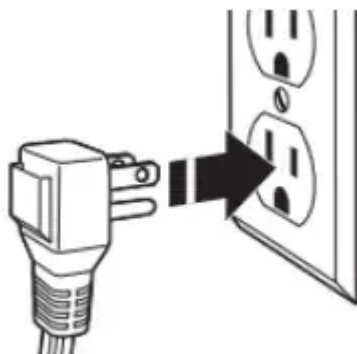
Use adjustable pliers to turn the plastic leveling foot counterclockwise to lower the washer or clockwise to raise the washer.

Recheck levelness of washer and repeat as needed.

#### **HELPFUL TIPS:**

- You may need to adjust two different feet to level your unit. Ensure each foot remains secured to the washer's base.
- You may want to prop up front of washer about 4" (102 mm) with a wood block or similar object that will support weight of washer.

#### 15. Plug into a grounded 3-prong outlet



### **Complete Installation Checklist**

- Check electrical requirements. Be sure you have correct electrical supply and recommended grounding method.

- Check that all parts are now installed. If there is an extra part, go back through steps to see what was skipped.
- Check that you have all of your tools.
- Check that shipping materials were completely removed from washer.
- Check that the washer is level.
- Check that water faucets are on.
- Check for leaks around faucets and inlet hoses.
- Remove protective film from console and any tape remaining on washer.
- Check that washer is plugged into a grounded 3-prong outlet.
- Dispose of/recycle all packaging materials.
- Read the "Washer Maintenance and Care" section.
- To test and clean your washer, measure 1/2 of normal recommended amount of powdered or liquid HE detergent and pour it into washer basket or detergent dispenser (on some models). Close lid. Select any cycle. Start washer and allow to complete full cycle.

### **Warning**

This content is compiled from multiple sources and is provided for reference purposes only. It may not be complete or fully applicable to all situations. If you are unable to resolve your issue, please contact the product manufacturer or an authorized service provider for official support.