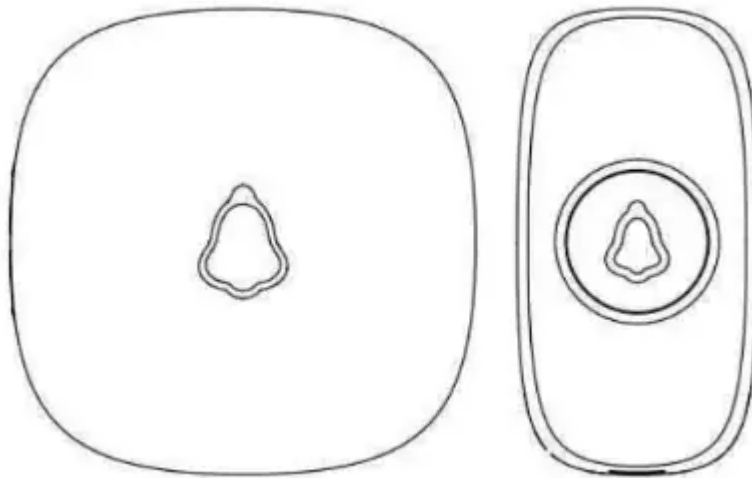
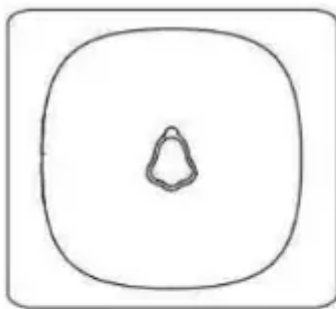


# Wireless Doorbell User Manual

Model: M520+F55



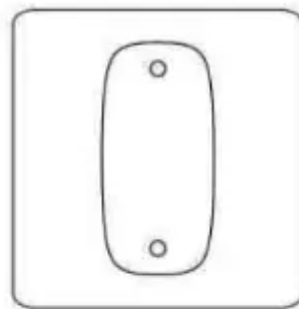
## Content



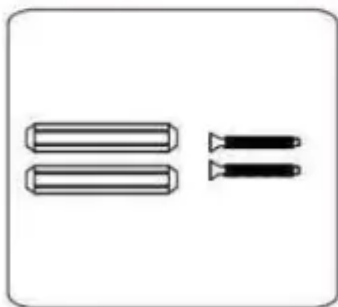
Doorbell



Push Button



Adhesive Sticker



Screws & Anchors



User Manual

Content will vary according to your kit

The push button supplied with this kit is pre-programmed to operate with the doorbell. If it is not, see “Connect a Push Button” on page 5



## Before Proceeding with the Installation

Please note the following safety warnings:

- Always follow the manufacturer's advice when using power tools and wear suitable protective equipment (e.g. safety goggles) when drilling holes, etc.
- Before drilling holes in walls, check for hidden electricity cables and water pipes. The use of a cable/pipe locator is advisable if in doubt.

## What You Should Know Before Installation

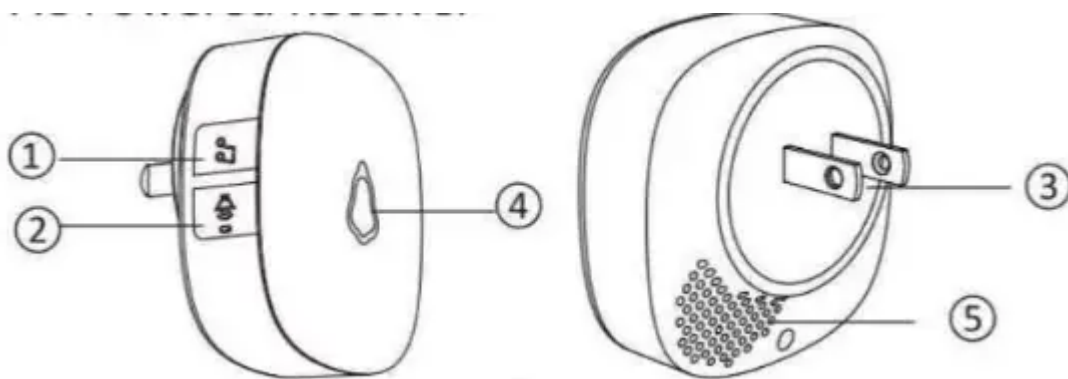
1. Test the operating range you desire. Choose an electric outlet at the height of 3.3 feet at least and plug in the receiver and take the button outside the door to test if it can work well within the range you have chosen.
2. Set a desired music (different or same one) for transmitters before installation. For music setting, see Operating Instructions. Doorbells have been paired and set to a default chime (Ding Dong) before leaving factory.
3. Please do not install transmitter on metal doors since it is hard for the signal to transmit.
4. Please take out the battery insulating strip before using. (As picture ①) [IMAGE]
5. Ensure all surfaces are clean by wiping the installation area with a clean cloth. Please note that the sticker will have poor adhesion if you attach it to a dirty or uneven surface. Sunlight or rain will also affect the adhesion over a longer period of time.



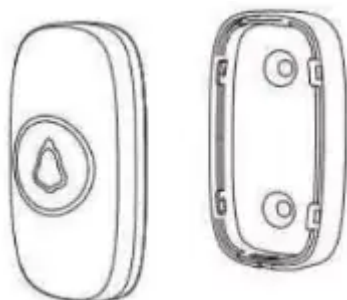
## Product Structure Diagram

### AC Powered Receiver

① Music Control, ④ LED light, ② Volume Control, ⑤ Speaker, ③ Plug




### Waterproof Transmitter




## Set Up and Operation



Press the push button to test whether it is paired with the doorbell. The doorbell will light up and ring. If it does not, see "Connect a Push Button" on page 5.

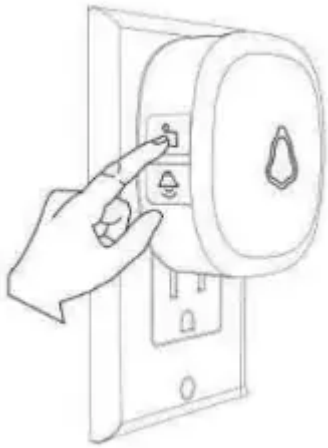
### 1. Adjust the Volume

Press the  1s. (when the power is cut off, and power is restored again, the volume will be automatically adjusted to maximum)

### 2. Change the Tune

Press the  1s: Loop tones in sequence and play the current tones.



Long press 5s  : Change tones loop direction. Press and hold the  to power on: The doorbell receiver will turn on after beeps ten times, indicating that the doorbell receiver will restore the track to the first song, and all the buttons are not deleted.



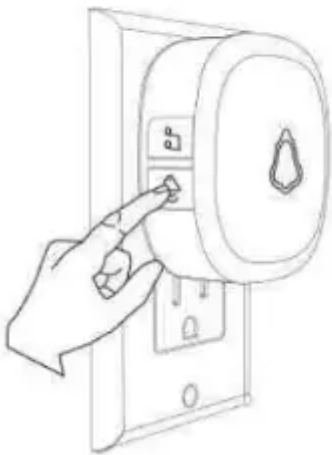
### 3. Connect a Push Button

You can connect up to 20 accessories to your doorbell, including other push buttons, window or door opening sensors, and motion sensors.

#### (1) VARIABLE - Tone Pairing

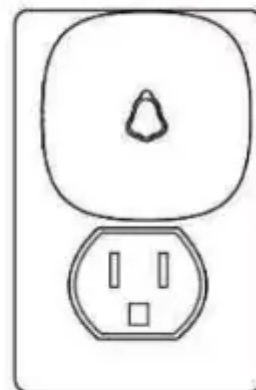
1. Plug-in the receiver, pressing and holding the  on the receiver for 5s, the receiver will beeps once, which means receiver get into pairing mode.
2. Press push button, the receiver will beeps twice with LED indicator flashes 1s. [IMAGE]
3. Press push button again, the receiver will beeps once with LED indicator flashes 1s, which means the pairing is successful. [IMAGE]
4. Short press  or leave it 20s without any operation, the doorbell will exit the pairing mode.

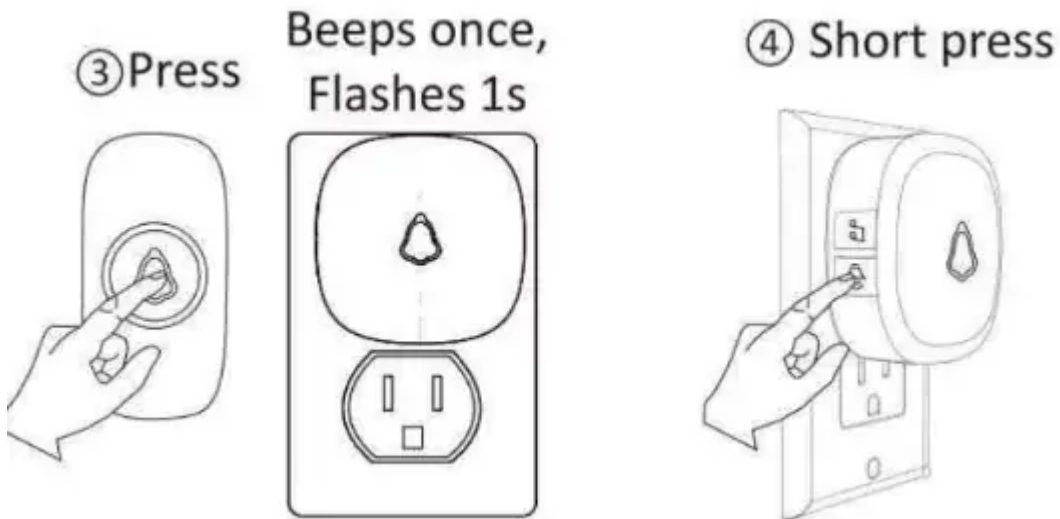
#### ① Long press 5s



#### ② Press

Beeps twice,  
Flashes 1s





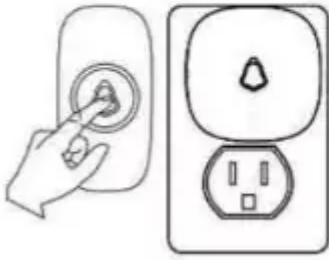
**(2) FIXED - Tone Pairing (only play your saved tone)**

1. Select a tone that you like
2. Pressing and holding the and button for about 5s until the receiver beeps once, which means receiver get into pairing mode.
3. Press push button once, the receiver will beeps twice with LED indicator flashes 1s.
4. Press push button once again, the receiver will beeps once with LED indicator flashes 1s, which means the pairing is successful.
5. Short press or leave it 20s without any operation, the doorbell will exit the pairing mode.

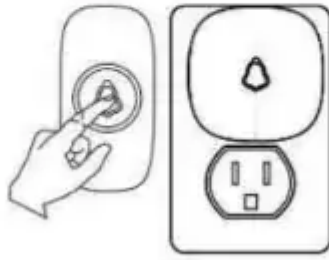
① Select music      ② & Press 5-7s



③ Beeps twice,  
Press Flashes 1s



④ Beeps once,  
Press Flashes 1s



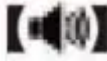
⑤ Short  
press, done.




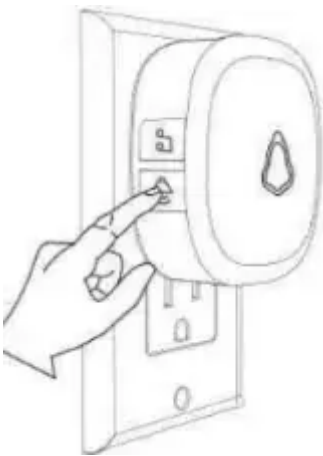
Adding the additional buttons/receivers please according to the above steps.

Note: Pair and set only one transmitter at a time to avoid interference and ensure successful operation.

#### 4. Reset (Clearing out Settings)

To return all settings to their default settings Hold down  and plug it into an outlet. After playing the beep 10 times, all settings will return to factory defaults.

Hold down  and Plug in



## Installation

Choose a location that is not near a heat source or on something that moves (like a door). For non-mounting locations, choose a place where the doorbell will be easy to see and hear.

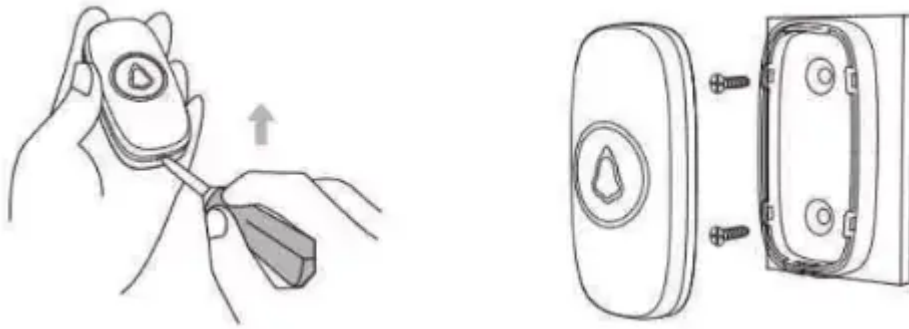
### 1. For Receiver:

Plug-in receiver: Just plug receiver into standard outlet in room.

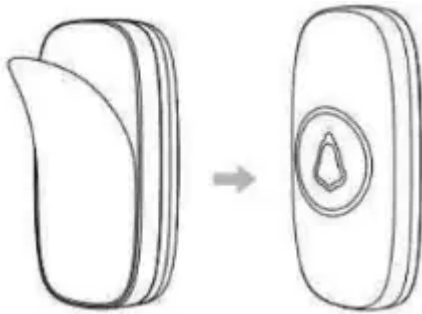
## 2. For Push button:

**IMPORTANT:** Before installation, please test if the operating range you choose is working and set music if needed. Before you drill any hole in the wall, please make sure there are not cables or pipes. To install you will require a drill and cross-headed screwdriver.

1. Open the Transmitter with screw driver and separate the front cover from the back cover. Penetrate the two standby holes at the back cover with two screws. Then fix the screws on the wall at suitable height.



2. Or you can stick the Transmitter with the double-sided adhesive tape



If you are not mounting the push button to the wall, place it where you want it.

## Chimes List

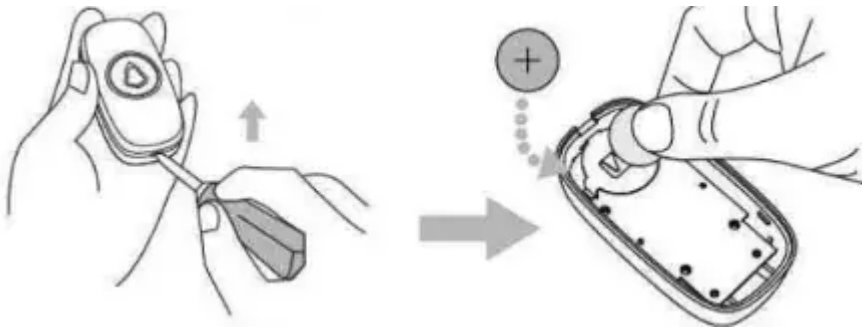
Number	Song Name
1	Dingdong-1
2	Dingdong-2
3	Dingdong-3
4	Scale 135i
5	Scale i531
6	Dingdong-4
7	Dingdong-5
8	Dingdong-6
9	Dingdong-7
10	Dingdong-8
11	Bell-1
12	Bell-2
13	Bell-3
14	Bell-4
15	Dingdong-9
16	Dingdong-10
17	take me out to the ball game
18	A Comme amour

Number	Song Name
19	Susanna
20	Symphony No.40 in minor
21	Serenade for strings in G major
22	Love story
23	doraemon
24	Ten little Indians
25	Nutcracker two
26	Fast Ding Dong Ding Dong
27	Violin Concerto - spring
28	Four little swans
29	Serenade
30	Minuet
31	To Alice
32	Auld Lang Syne
33	Carman Overture
34	Bach Minuet
35	Turkey March
36	Music 01
37	Nokia classic ringtones
38	Radetzky march

Number	Song Name
39	Scale 1351 1531
40	Ringing tone
41	Romeo and Juliet
42	Kung Fu episode
43	Violin Concerto No.1
44	Drinking song - Camellia girl
45	kiss the rain
46	Irish thrush
47	Lake Baikal
48	Cannon
49	Romance in the rain
50	Titanic
51	Scale 5351
52	Romance of love
53	Tetris
54	Yesenia
55	mermaid
56	Merry Christmas
57	Scarborough fair
58	Music box of love

## Battery Replacement of Push Button

Open the battery cover and install the CR2032 battery.



## Specifications

	Doorbell	Push Button
Operating Temperature	-4°F to 140°F	-4°F to 140°F
Radio Frequency	433 MHz	433 MHz
Range (open field)	1,000 ft	1,000 ft
Sound Level (typical)	0-120 dB	-
Battery Type	Plug in	CR2032
Battery Life (5 activations/day)	Up to 5 years	Up to 3 years
Rain Proof	N/A	IP55

## Troubleshooting

### The doorbell does not work

1. The doorbell might be out of range; try the doorbell in a different location.
2. Reconnect the doorbell. See "Connect a Push Button" on page 5.
3. Check all the batteries and replace if needed.
4. Check if the LED on the transmitters is working when activated.
5. Check if the doorbell is muted. Check that the transmitter is linked with the chime.

### Range and Interference Notes

1. Metal structures including uPVC door frames can reduce the range. Don't mount the doorbell or doorbell push on or near metal structures.
2. Move the doorbell closer to the doorbell push button. Weak batteries will reduce range. In cold conditions (below 5°C), batteries may need to be replaced more often.

## 1 Year Limited Warranty

This product is warranted to the original purchaser only for a period of 1 year from the date of purchase for products damaged due to defect in workmanship and materials. Proof of purchase is required to obtain warranty service. Warranty is for replacement only. No service parts are available for these products. No other warranties are expressed or implied. Batteries are not covered under this warranty.

For warranty service, please contact SECURI Customer Service by email: [contact@secrui.com](mailto:contact@secrui.com)

**IMPORTANT:** PLEASE KEEP THESE INSTRUCTIONS FOR FUTURE REFERENCE WHEN REPLACING BATTERIES

FCC ID: 2AZI3-F55

Made In China

### Warning

This content is compiled from multiple sources and is provided for reference purposes only. It may not be complete or fully applicable to all situations. If you are unable to resolve your issue, please contact the product manufacturer or an authorized service provider for official support.

---

Document generated by [ManualsFile](#)