

Product Instructions Electric cleaning brush ANS-8051A



Switch panel function



Note: These are important, please read them carefully power switch

Function 1: Short press the power switch to start the power supply, the machine enters the standby state, voice prompt: Power ready, please press M to start, digital tube displays the current remaining Power and 0 standby mode. When the 🔊 is displayed, it means the current voice mode.


Function 2: In any state, long press for ⏻ seconds, the machine enters the locked state. Voice prompt: locked. The digital tube displays the 🔒. When the machine is locked, pressing the power button cannot turn on the power. Voice prompt: "Please off lock" 🔒 blinks.

Function 3: Unlock. When the machine enters the lock state, long press ⏻ for 3 seconds to unlock the lock state. Voice prompt: Power ready, please press M to start.


Function 1: When the machine enters the standby state, press the M key 1-2-3-4 times, and the digital tube displays 1-2-3-0. The functions are as follows: low speed - medium speed - high speed - stop.

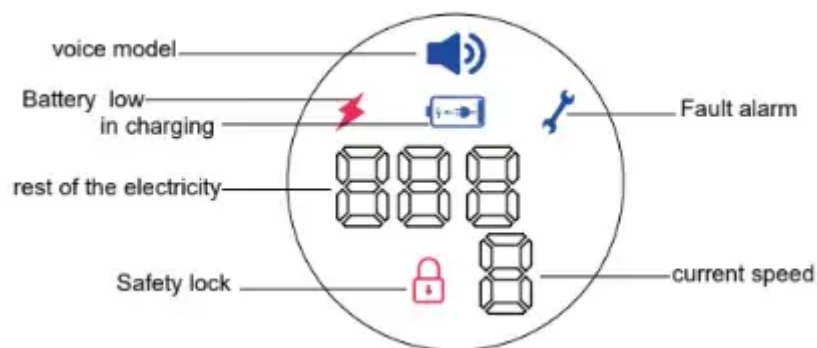
Function 2: In standby state, long press the M key for 3 seconds to enable or disable the voice function. When the digital tube displays , it is voice mode, and the voice prompt is "Voice mode on". When the digital tube does not display , the voice mode is mute, and the voice prompt is: Voice mode OFF

Overload Protection

If you press too hard or overload the machine during use, the machine will enter the protected state within two seconds and automatically stop working. The  is displayed on the digital tube, and the voice prompt is: "Overload shutdown, please restart". Press the M key again to enter the working mode.

Low Battery Indication

When the remaining power is less than 30%, the digital tube displays , and the voice prompt is: "The power is low, please charge". When the remaining power is less than 10%, the voice prompt is: "Low power, is about to shut down".



Product Introduction

- Multi-function electric cleaning brush, widely used, standard with 8 pieces of brush heads, can be used for heavy oil cleaning kitchen, living room, bathroom, home, glass, car and other surface cleaning.
- LED digital display, with charging, low battery, switch lock, lock-in protection and other prompt functions.
- Voice function, industry first, switching between modes full voice reminder.
- Hidden charging port, USB Type-C plug for charging.
- Plug type brush head for easy replacement.

- Quick connection extension rod, adjustable length.
- 18650 10C rate lithium battery, sustainable output 30W power.
- Three speeds, with great power.
- Key function and voice prompt and digital display instructions.



1. Large flat brush head
2. Sharp brush head
3. Small flat brush head
4. Spherical brush head
5. Sponge brush head
6. Absorbent cloth
7. Scouring pad
8. Copy wool brush head
9. Brush head holder
10. Charging line
11. Adjust the switch
12. Digital display screen
13. Extension of the rod

Warning

- Please check carefully the fittings before use.
- Do not place the charger in wet conditions.
- Be sure to check that the charging hole is sealed when cleaning.
- Dry the surface in time after cleaning to ensure the product is dry.
- This product must not be used by persons (including children) who are not sound, feel or mentally handicapped or lack relevant experience and knowledge, unless there are persons responsible for their safety who supervise or direct their use of the product. Children should be taken care of to ensure that they do not play with these products.
- Do not use hot water when cleaning products. When using warm water, check that the temperature is too high to prevent scalding.
- Please make sure to use the standard charger for this product.
- Do not touch the rotating parts with your hands or skirts when using.

How to Charge

1. When the power is lower than 10%, the voice system prompts "The power is low, please charge", and the power level blinks, indicating that the battery needs to be charged.
2. First check to ensure that there is no water on the surface of the machine, remove the protective cover of the charging hole, and insert the Type-C charging head into the charging hole (Fig2).
3. During the charging time, please ensure that the machine is in a reliable and fixed position and cannot be suspended. (Fig3).
4. During the charging process, the number of power display is flashing, and the battery mark is constant. With the increase of power, the number gradually increases, and when the number shows 100, it means that the power is sufficient.
5. After charging, pull out the charging head, unplug the charger from the power supply, and install the charging hole protection on the machine (Fig4).

Warning: Keep your hands and machine surface dry when charging, and carefully check whether the charger meets the requirements. Do not use it when plug in the product.



Purpose of Accessories

- Copy wool brush head is suitable for paint, leather and other easily damaged surface cleaning and polishing, such as car surface, sofa, furniture and other precious goods surface (Fig5).
- Sponge brush head is suitable for deep cleaning of bright or easily damaged surface and removal of subtle stains, oil stains and water stains, such as the surface of tea table, glass, TV and computer screen (Fig6).
- Scouring pad is suitable for the surface of heavy oil pollution cleaning, need to be used with no corrosive cleaner, more effective, such as gas cooker, kitchen ventilator, kitchenware and other kitchen utensils (Fig7).
- Spherical brush head is suitable for bath tub, toilet and other large areas with slight dirt position cleaning (Fig8).
- Large flat brush head is suitable for floor, carpet, wall and other dirty cleaning (Fig9).
- Small flat brush head is suitable for kitchenware, tableware and sink, and clean the small area of moderate dirt of outdoor supplies (Fig10).
- Sharp brush head is suitable for corner, article corners, tile gaps, car contour and other difficult to clean the position (Fig11).
- Absorbent cloth, after using the brush head, use absorbent cloth to wipe the surface water stains and finish the surface polishing (Fig12).



How to Use

- Ensure sufficient power before use.
- Install the appropriate brush head on the product according to the requirements of the place of use.
- Press the M key, the display screen shows 1, 2, 3 for low, medium and high speed.
- During use, the number displayed on the display is the proportion of battery remaining.
- After cleaning, shut down the machine in time, continue to replace the brush head, or clean the product and place the brush head properly.

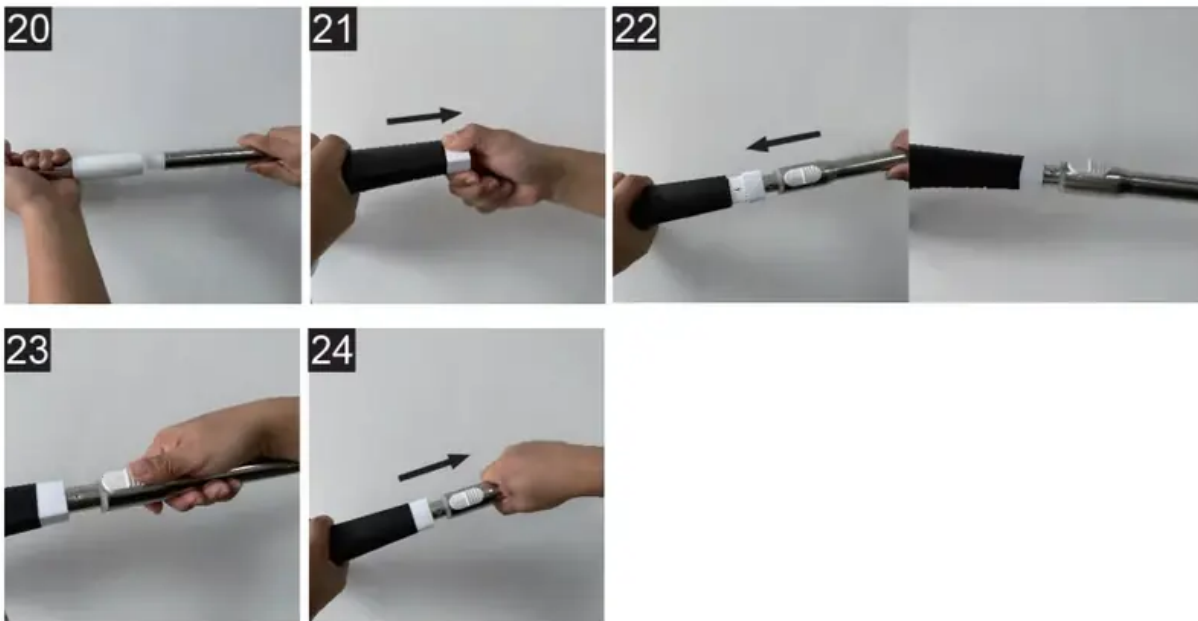
How to Replace the Brush Head

- When replacing the brush head, the product should be closed and the fingers should be away from the switch key (Fig16).
- Hold the brush head and pull it out vertically. When pulling the brush head, you can gently swing the brush head while pulling, so it is easier to pull it out. (Fig17).
- Installing the brush head, align the semicircular groove of the brush head with the convex groove of the brush head connector and mount it vertically. (Fig18).
- When using the mop, press the white side of the mop towards the bottom of the mop tray to start it (Fig19).



Use Method of Extension Rod

1. Thread the two fittings of the extension rod together (Fig20).
2. Pull the tail cover out of the machine (Fig21).
3. Insert the top socket of the extension rod vertically to the end of the machine (Fig22).
4. After the extension rod is installed, it can be turned on and used.
5. The extension length can be adjusted freely by pushing the adjustment switch (Fig23).
6. When removing the extension rod, hold the steel pipe in your hand and pull it out vertically (Fig24).
7. After the extension rod is removed, the charging hole protection cover must be installed before use. Otherwise it is easy to water, resulting in machine failure or battery short circuit risk (Fig25).



Cleaning and Maintenance

- Please check if the charge is sealed when cleaning.
- Do not use metal such as steel wire or abrasive cleaner or corrosive liquid (e.g. gasoline or acetone) to clean brush heads and fuselage surfaces.
- You can wash the product under the tap or drive the product to high-end, and automatically clean the brush into the water.
- After the cleaning is finished, it is necessary to shake the moisture on the dry product and wipe it with dry cloth.

Environment Protection

- Do not use more than 60° of hot water to clean the brush head and products.
- When disposing of products, please do not pile them up with general domestic waste; they should be handed over to the manufacturer's designated recycling centre. This is good for environmental protection.
- Built-in rechargeable batteries contain substances that may contaminate the environment. When products are discarded, make sure the battery is removed and properly handled.

Warning

This content is compiled from multiple sources and is provided for reference purposes only. It may not be complete or fully applicable to all situations. If you are unable to resolve your issue, please contact the product manufacturer or an authorized service provider for official support.

