

Product specification

Charging and cleaning time may differ depending on the brushes and the conditions of use

Model		VS20A95**** Series
Power consumption (Vacuum cleaner)		Based on a handy vacuum cleaner: 580 W
Battery specification		Li-ion 25.2 V, 2200 mAh, 7 cell
Weight (Vacuum cleaner)		2.7 kg (Jet Dual Brush)
Size	Vacuum cleaner	Width 250 mm x Depth 210 mm x Height 1,000 mm
	Clean Station	Width 300 mm x Depth 300 mm x Height 850 mm
Charging time		3.5 hours
Cleaning time (Default: [MID])	Combination Tool / Extension Crevice Tool	Approx. 60 min. [MIN] / Approx. 30 min. [MID] / Approx. 10 min. [MAX] / Approx. 3 min. [JET]
	Jet Dual Brush	Approx. 42 min. [MIN] / Approx. 24 min. [MID] / Approx. 14 min. [MAX] / Approx. 8 min. [JET]
	Slim Action Brush	Approx. 50 min. [MIN] / Approx. 25 min. [MID] / Approx. 15 min. [MAX] / Approx. 9 min. [JET]
	Wet Brush	Approx. 100 min.

* Cleaning time doubles when you use two batteries consecutively.

Safety information

- Before operating the appliance, please read this manual thoroughly and retain it for your reference.
- Because the following operating instructions cover various models, the characteristics of your vacuum cleaner may differ slightly from those described in this manual.

Caution/Warning symbols used

WARNING

Indicates that a danger of death or serious injury exists.

CAUTION

Indicates that a risk of personal injury or material damage exists

General

- Read all instructions carefully. Before switching the vacuum on, make sure that the voltage of your electricity supply is the same as that indicated on the rating plate at the rear of the handy vacuum cleaner (battery contact side).
- WARNING : Do not use the vacuum cleaner on a wet rug or floor.
- Close supervision is necessary when any appliance is used by or near children. Do not allow the vacuum cleaner to be used as a toy. Do not allow the vacuum cleaner to run

unattended at any time. Use the vacuum cleaner only for its intended purpose as described in these instructions.

- Do not use the vacuum cleaner without a Dustbin.
- Empty the Dustbin before it is full to maintain the highest efficiency.
- Do not use the vacuum cleaner to pick up matches, live ashes or cigarette butts. Keep the vacuum cleaner away from stoves and other heat sources. Heat can deform and discolor the plastic parts of the unit.
- Avoid picking up hard, sharp objects with the vacuum cleaner as they may damage the vacuum's parts.
- Do not block the suction or the exhaust port.
- To avoid damage, remove the plug by grasping the plug, not by pulling the cord.
- This appliance can be used by children aged from 8 years and above and persons with reduced physical, sensory or mental capabilities or lack of experience and knowledge if they have been given supervision or instruction concerning use of the appliance in a safe way and understand the hazards involved. Children should not play with the appliance. Children should not clean or perform maintenance on the vacuum without adult supervision.
- Children should be supervised to ensure that they do not play with the appliance.
- The battery must be removed from the main unit before cleaning or performing maintenance on the vacuum.
- The use of an extension cord is not recommended.
- If your vacuum cleaner is not operating correctly, switch off the power supply and consult an authorized Samsung service agent.
- If the supply cord is damaged, it must be replaced by the manufacturer or its service agent or a similarly qualified person to avoid any electrical hazards.
- Do not use to suction up water.
- Do not immerse in water for cleaning.
- Please contact Samsung or a Samsung service center for a replacement if one is needed.

Clean Station

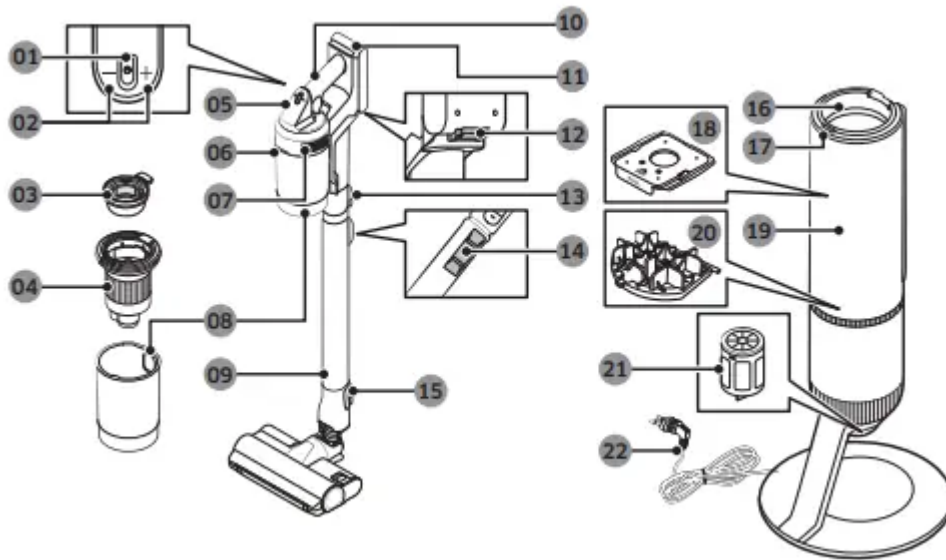
- Do not modify the polarized plug to fit a non-polarized outlet or extension cord.
- Do not use outdoors or on wet surfaces.
- Unplug the Clean Station from the outlet when not in use and before servicing.
- Use only the Clean Station supplied by the manufacturer to recharge.

- Do not use with a damaged cord or plug.
- Do not pull or carry by the cord, use the cord as a handle, close a door on the cord, or pull the cord around sharp edges or corners. Keep the cord away from heated surfaces.
- Do not use extension cords or outlets with inadequately rated current.
- Do not charge a non-rechargeable battery.
- Do not unplug by pulling on the cord. To unplug, grasp the plug, not the cord.
- Do not mutilate or incinerate batteries as they will explode at high temperatures.
- Do not attempt to open the Clean Station. Repairs should be only carried out by a qualified Samsung service center.
- Do not expose the Clean Station to high temperatures or allow moisture or humidity of any kind to come into contact with the Clean Station.

Vacuum cleaner

- Do not pick up hard or sharp objects such as glass, nails, screws, coins, etc.
- Do not use without a filter in place. When servicing the unit, never put fingers or other objects into the fan chamber in case the unit accidentally turns on.
- Do not put any objects into openings. Do not use with any openings blocked. Keep openings free of dust, lint, hair, and anything that may reduce air flow.
- Do not pick up toxic materials (chlorine bleach, ammonia, drain cleaner, etc.).
- Do not pick up anything that is burning or smoking, such as cigarettes, matches, or hot ashes.
- Do not use the vacuum cleaner in an enclosed space filled with vapours given off by oil based paint, paint thinner, moth proofing substances, flammable dust, or other explosive or toxic vapours

Parts overview



1. Power (⏻) button
2. Suction power control button
3. Washable Micro Filter
4. Metal Mesh Grille Filter
5. Display
6. Dustbin release button
7. Fine Dust Filter
8. Dustbin
9. Adjustable pipe
10. Handle
11. Battery level indicator
12. Battery release button
13. Pipe release button
14. Pipe length adjustment button
15. Brush release button
16. Dustbin joint
17. Clean Station START/STOP Button
18. Dust bag
19. Clean Station front cover
20. Clean Station Premotor Filter

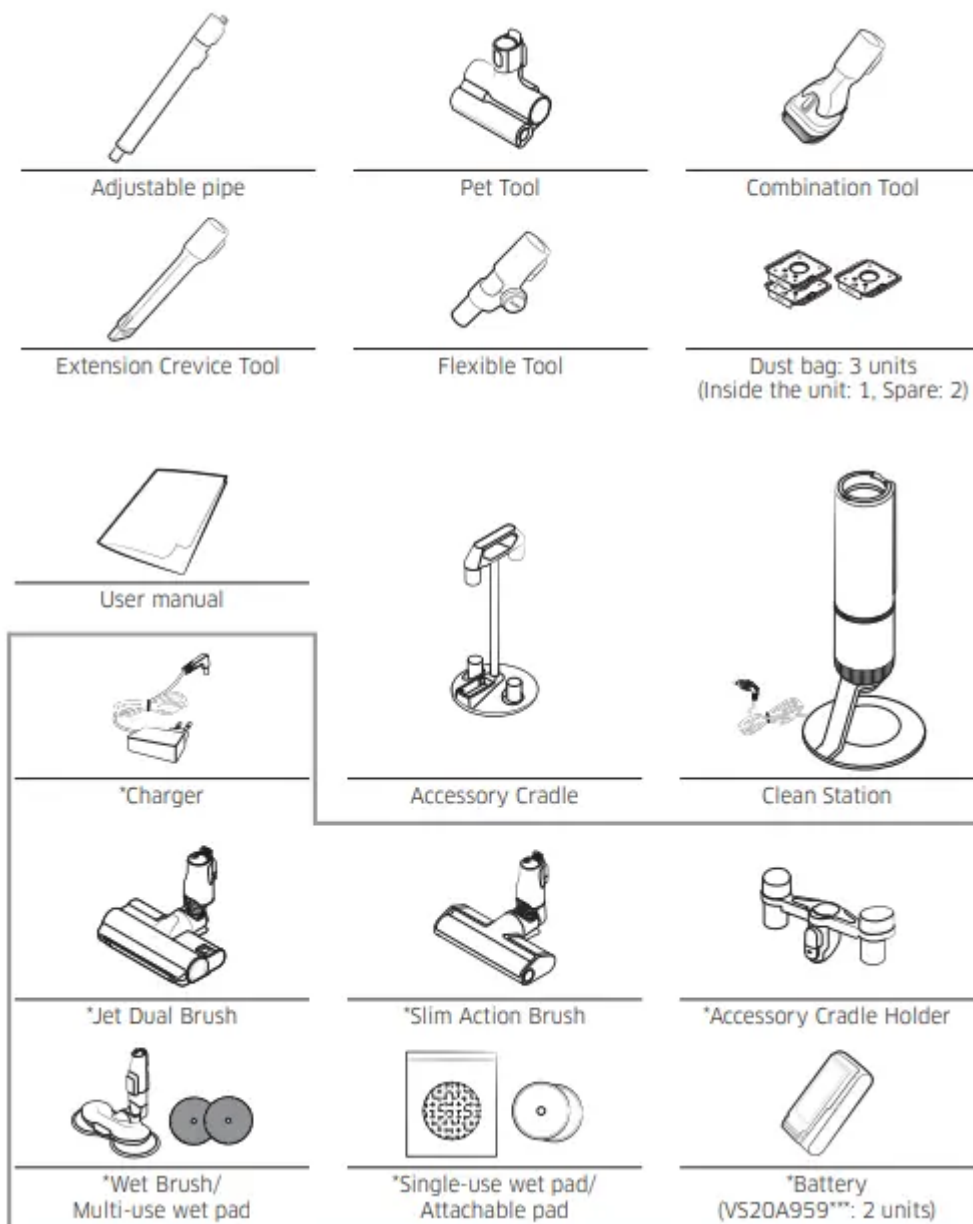
21. Clean Station Fine Dust Filter

22. Power cord

The wave pattern on the exterior of the product is a natural appearance due to the use of pearl plastic materials and its pearl distribution. In addition, the shining pearl used in the material gives an excellent gloss coating, no extra coating necessary.

Accessories

The accessories with the '*' mark may differ depending on the models.



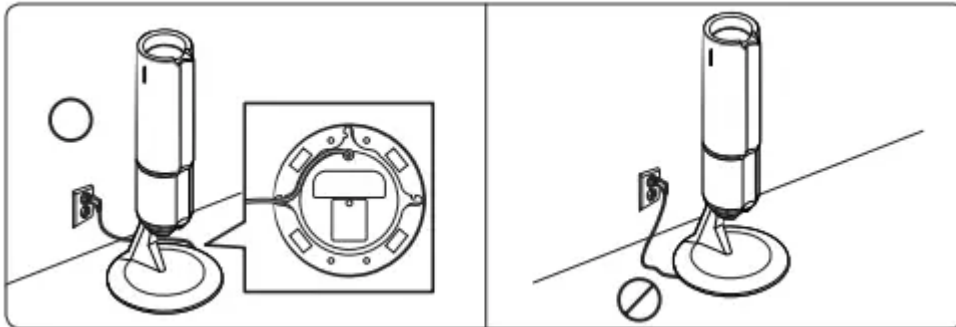
* Optional

* VS20A958*** model: The additional battery and charger can be purchased separately.

- * The Wet Brush includes a multi-use wet pad and a single-use wet pad.
- * The Wet Brush and Jet Dual Brush are only compatible with VS20A95**** model.

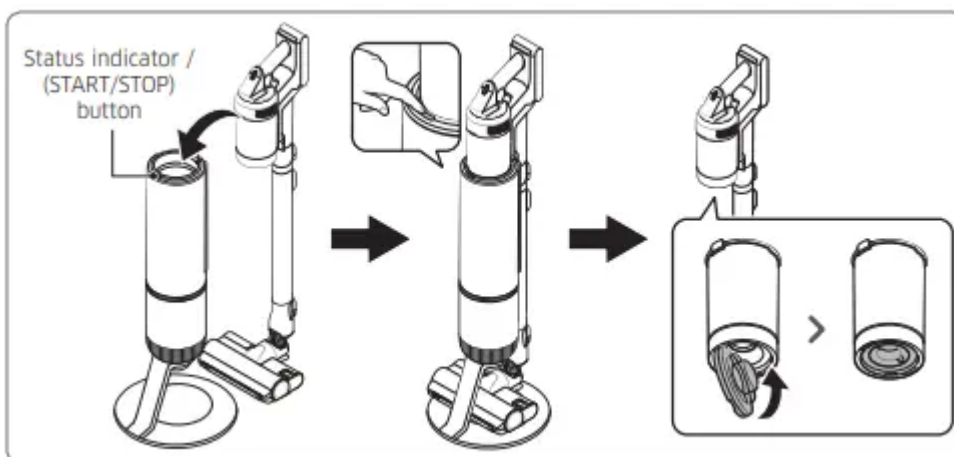
Clean Station

Installing the Clean Station



1. Run the power cord of the Clean Station along the round groove at the bottom.
 - Make sure the power cord is correctly placed so that the Clean Station stands without tilting.
2. Before plugging in the Clean Station, arrange the power cord neatly.
3. When plugging in the Clean Station, the status indicator turns blue for 5 seconds and goes off.

Using the Clean Station



- After inserting the vacuum cleaner into the Clean Station, press the START/STOP button to empty the Dustbin.
 - Press the START/STOP button again to stop its operation.

- Close the bottom cover of the Dustbin before using the vacuum as the bottom cover is open after emptying Dustbin at the Clean Station.

Vacuum cleaner

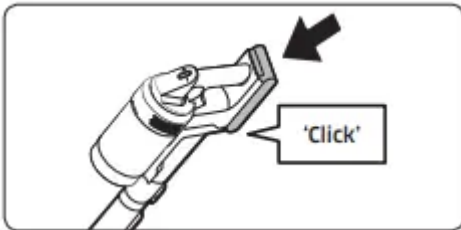
Charging the battery

- * When the battery level indicator turns red or the [Low battery] message appears on the display, charge the battery.
- * You cannot use the vacuum cleaner while charging.
- * Make sure the back of the battery is correctly placed onto the vacuum charging part.
- * Check that the battery level indicator is displayed while charging.
- * When charging starts, the battery level indicator turns on (red, orange, or yellow depending on charging progress), it rises gradually, and changes to green when the charging is complete.

⚠ CAUTION

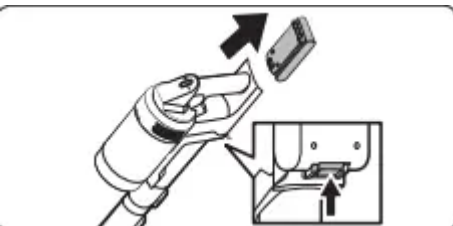
- Before ejecting the battery, the vacuum must be turned off.
 - If the battery is forcibly ejected while the vacuum is operating, the vacuum may malfunction.
- Be careful not to drop the battery. If you do, you can injure yourself or damage the battery.

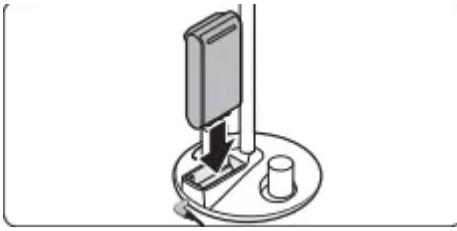
Inserting the battery



Push the battery to the end until you hear it click.

Ejecting the battery





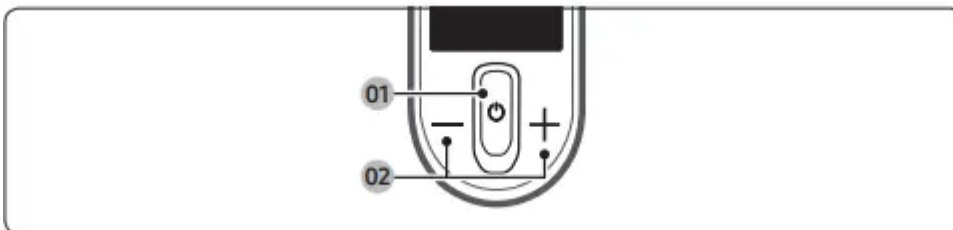
Press the battery release button at the rear of the handle to eject the battery.

Charging the additional battery

- Charge the additional battery at the additional battery charging slot at the bottom of the Accessory Cradle.
- Push the battery in firmly.
- * VS20A958*** model: To charge the battery at the Accessory Cradle, a charger needs to be purchased separately. (VCA-SAPA95)

Using the vacuum cleaner

Control Part



* Before using the product, you have to select a language for the first time. Use (+) or (-) button to select a language and hold the (+) button for 3 seconds to complete the setting.

- Press and hold the (+) button for 3 seconds while using the vacuum to enter the language setting mode later.

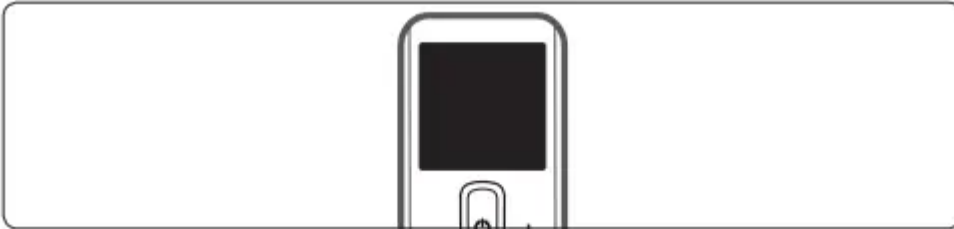
* To set the Energy Saving mode, press and hold the (+) button for 5 seconds while the vacuum is on the Clean Station.

- To cancel the Energy Saving mode, press and hold the (+) button for 5 seconds.
- The Energy Saving mode is automatically exited if the vacuum is used. 01 Power () on / off: Press the () button to start cleaning in [MID] mode.
- When the Wet Brush is assembled, the vacuum starts cleaning in the Wet Brush mode. 02 Suction power mode control part: You can change the suction power mode.
- You can change the 4 steps [MIN, MID, MAX, JET] of the suction power with the (+) and (-) button.

NOTE

- When the vacuum is in the Wet Brush mode, only the (+) button works.
- While using the Wet Brush, the language setting is not supported.
- If the brush clings to the floor or does not turn properly depending on the floor material (a carpet, a mat, bedding, etc.), adjust the suction power mode to [MIN] or [MID].

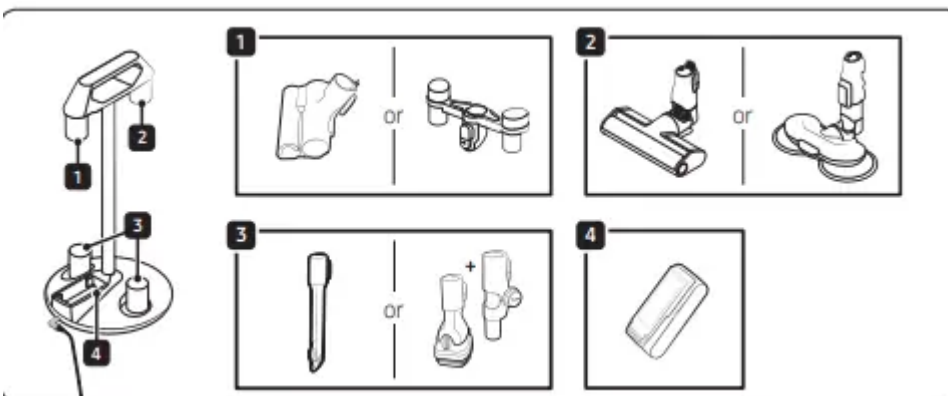
Display Part

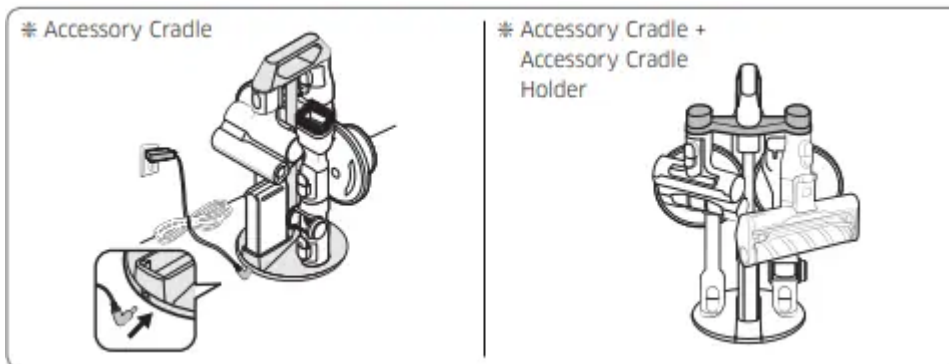


- Suction power mode
 - Displays the suction power mode you have selected as [MIN], [MID], [MAX] or [JET].
- [WET]: Wet Brush mode
 - When the Wet Brush is assembled, the Wet Brush mode is displayed.
 - Press the (+) button to spray water. While holding the (+) button, water is sprayed for a maximum of 2 seconds.

Using the Accessory Cradle

Before charging the additional battery, plug in the charge



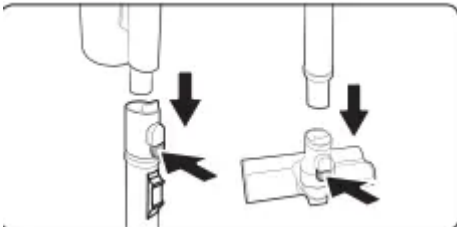


- When accessories are detached to be stored, dust may fall from the suction part of the vacuum cleaner.

- After cleaning, shorten the pipe length and operate the vacuum in [MAX] mode for 10 seconds.
- If the pad is wet and stored with the Wet Brush, the wall near the wet pad can be contaminated or begin to smell. After cleaning the pad, dry the pad completely.
- When detaching the brush, press the release button on the brush.

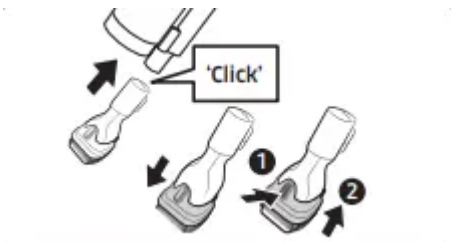
Using the accessories

Detaching the accessories



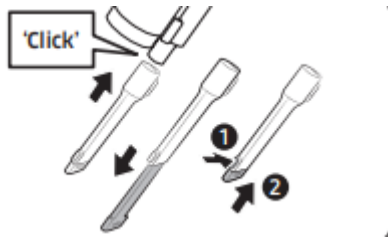
- When detaching the adjustable pipe or the brush, press the release button on the back.
- Before detaching the accessories, operate in [MAX] mode for more than 10 seconds to remove foreign matter remaining in the accessories.

Combination Tool



Use to remove dust from curtains, furniture, sofas, etc.

Extension Crevice Tool



Use to remove dust in grooves of window frames, narrow openings, corners, etc..

Flexible Tool

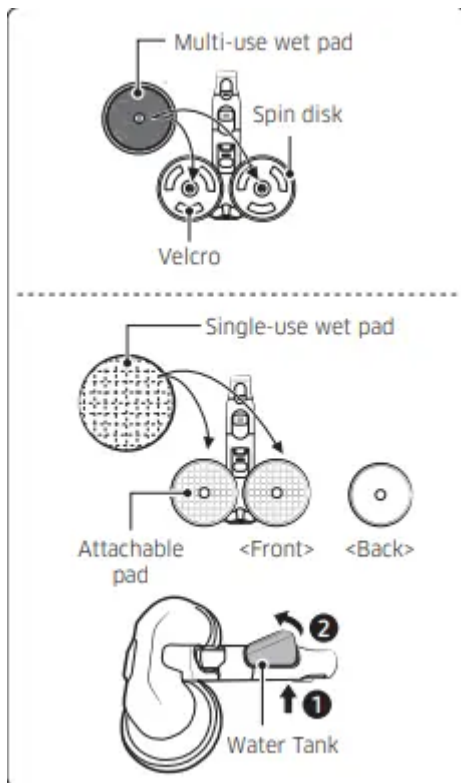


Use to clean hard to reach places such as upper or rear parts of furniture or ceilings.

NOTE

- The Flexible Tool can be connected to the Combination Tool and the Extension Crevice Tool.

Wet Brush



- Use to clean a floor with a wet pad (wood and linoleum).
- The Wet Brush does not have a dust suction function.

Using the multi-use wet pad

- When attaching the wet pad, make sure the pad is in the center of the spin disk.

Using the single-use wet pad

- Attach the single-use wet pad to the front side (Velcro side) of the attachable pad on the spin disk.
- If you use the single-use wet pad without the attachable pad, cleaning performance can be degraded.
- After using the single-use wet pad, discard the pad.

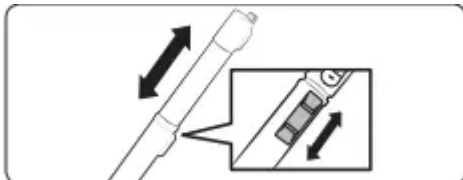
Detaching or attaching the Water Tank

- Press the lower part of the Water Tank to detach.
- When attaching the Water Tank, insert the front end first.

NOTE

- Do not use underground or polluted water.
- When using for the first time, the air in the pump and the tube may cause the Wet Brush to delay spraying water. Press the water spray (+) button repeatedly.

Adjusting the pipe length



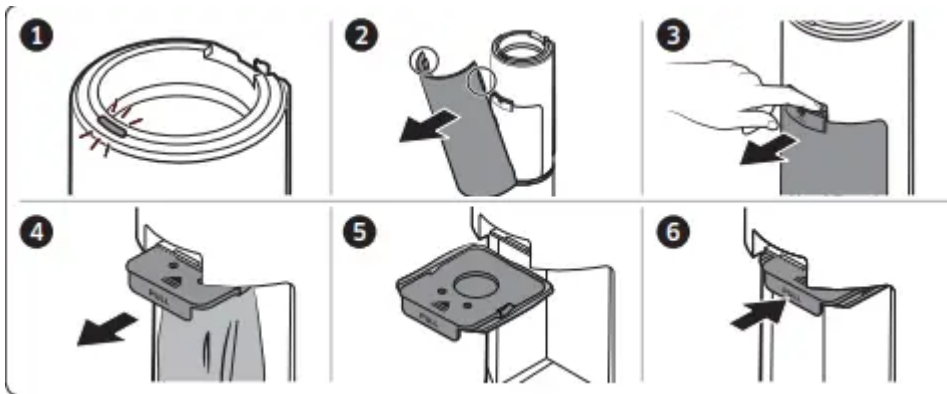
Press the button at the rear of the adjustable pipe to adjust the length of the pipe in 3 steps

Maintenance

Cleaning the Clean Statio

Replacing the dust bag

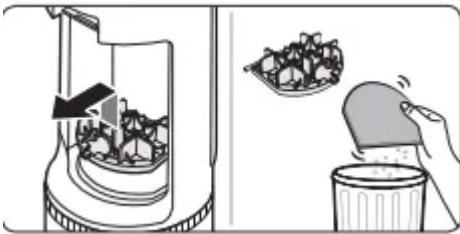
When the status indicator turns red, you should replace the dust bag.



Cleaning the Premotor

Filter Use the handle to lift the filter off and shake over a bin to remove dust.

Cleaning the Fine Dust Filter



Shake the Fine Dust Filter over a bin to remove dust.

Cleaning the vacuum cleaner

Dustbin/Washable Micro Filter

⚠ CAUTION

- After cleaning the Dustbin/Washable Micro Filter with water, you should dry them completely in the shade for more than 24 hours before use.
 - When heat is applied, part deformation may occur.
 - If the filter is not dried completely before being used, it can cause an odor.
- If the Dustbin or the filter is clogged, the vacuum may stop its operation due to the overheating prevention device of the motor.
 - Clean the Dustbin or the filters and then operate the vacuum again.

Fine Dust Filter

Make sure to turn off the product before cleaning the filter.

- Twist and pull off the Fine Dust Filter, and tap it gently to remove the dust.

- Wash the filter with running water once a month to maintain the best performance of the filter.
- After cleaning, dry it completely for more than 24 hours in the shade before use.
- For assembly, turn it counterclockwise until the line under the lock image is not visible.

NOTE

- Do not use detergent or tool when washing the filter.
- Do not dry with heat.

Jet Dual Brush

If the foreign matter is not removed, use scissors to remove it.

Troubleshooting

Before calling for service, review the problems and solutions below. Note that you will be charged for any service calls in which no defects were found.

The vacuum cleaner does not work.

- Check the battery level and charge the battery.
- Check whether the product is turned off, and then press the power button to turn it on.
- Check whether the adjustable pipe, the Dustbin or the brush is blocked.
- Check that the Washable Micro Filter is inserted correctly.
- If the vacuum has not been used for a long time, charge the battery.
- If the battery dies, replace the battery.

The spin brush (drum) inside a brush does not work.

- When the message [Check Brush] appears on the display, turn off the vacuum and check whether the brush is clogged with foreign matter. If so, remove the foreign matter and restart the vacuum.
- When the vacuum cleaner is turned on, turn it off and on again.
- For the (Slim Action Brush) and (Wet Brush), if the overheating prevention device of the brush motor operates, it may take about 30 minutes to cool the motor.

An odor emits from the air outlet or the filter of the product.

- Empty the Dustbin and clean the filters frequently.
- As your vacuum cleaner is a new product, it may have a slight odor for the first 3 months after purchase.
- If you use the vacuum cleaner for a long period of time, accumulated dirt in the Dustbin or dust on the filter may generate an odor.

- Replacement filters are available at your local Samsung service agent.

Static electricity occurs when cleaning a thick and soft mat.

- Materials of a mat (childcare center mat, noise prevention mat for between floors, etc.) may cause the static electricity.
- Move the brush on a normal floor for a while and clean again, then the static electricity should disappear.

The Wet Brush does not spray water.

- When using for the first time, the air in the internal pump of the Wet Brush and the tube may cause the Wet Brush to delay spraying water.
- Detach the Water Tank, press the water spray (+) button, and check that the pump operates with a sound.
- Fill the Water Tank, attach it to the Wet Brush, and press the water spray (+) button repeatedly.

The vacuum cleaner cannot be charged.

- Confirm that the voltage provided to the Clean Station matches the requirements of the Clean Station.
- Check that the vacuum cleaner is turned on, and then check that the LED of the battery level indicator is turned on.
- Check if foreign matter (dust) is on the charging terminal. Remove any foreign matter with a cotton swab or soft cloth

Vacuum cleaner stops operation during cleaning.

- As this product has the overheating prevention device of the motor, product will stop operation temporarily for the following conditions. After correcting the cause of the problem, turn the product on again. (This case may differ depending on the ambient temperature.)
 - When the vacuum operates with a full Dustbin.
 - When the vacuum operates with a brush clogged.
 - When the Extension Crevice Tool is used for long hours.

Suction force decreases suddenly and the vacuum makes a vibrating sound.

- Check whether the brush, the Dustbin or the adjustable pipe is clogged with foreign matter and remove it.
- Check whether the Dustbin is fully filled with dust. If it is, empty the bin.
- Check whether the filter is dirty. If it is, clean the filter.

Cleaning is finished but small dust particles come out of the brush.

- After cleaning, operate the vacuum for 10 seconds or more to suction up the small dust particles.

• ***This Vacuum cleaner is approved the following.***

- The Low Voltage Directive 2014/35/EU
- The EMC Directive 2014/30/EU

Warning

This content is compiled from multiple sources and is provided for reference purposes only. It may not be complete or fully applicable to all situations. If you are unable to resolve your issue, please contact the product manufacturer or an authorized service provider for official support.