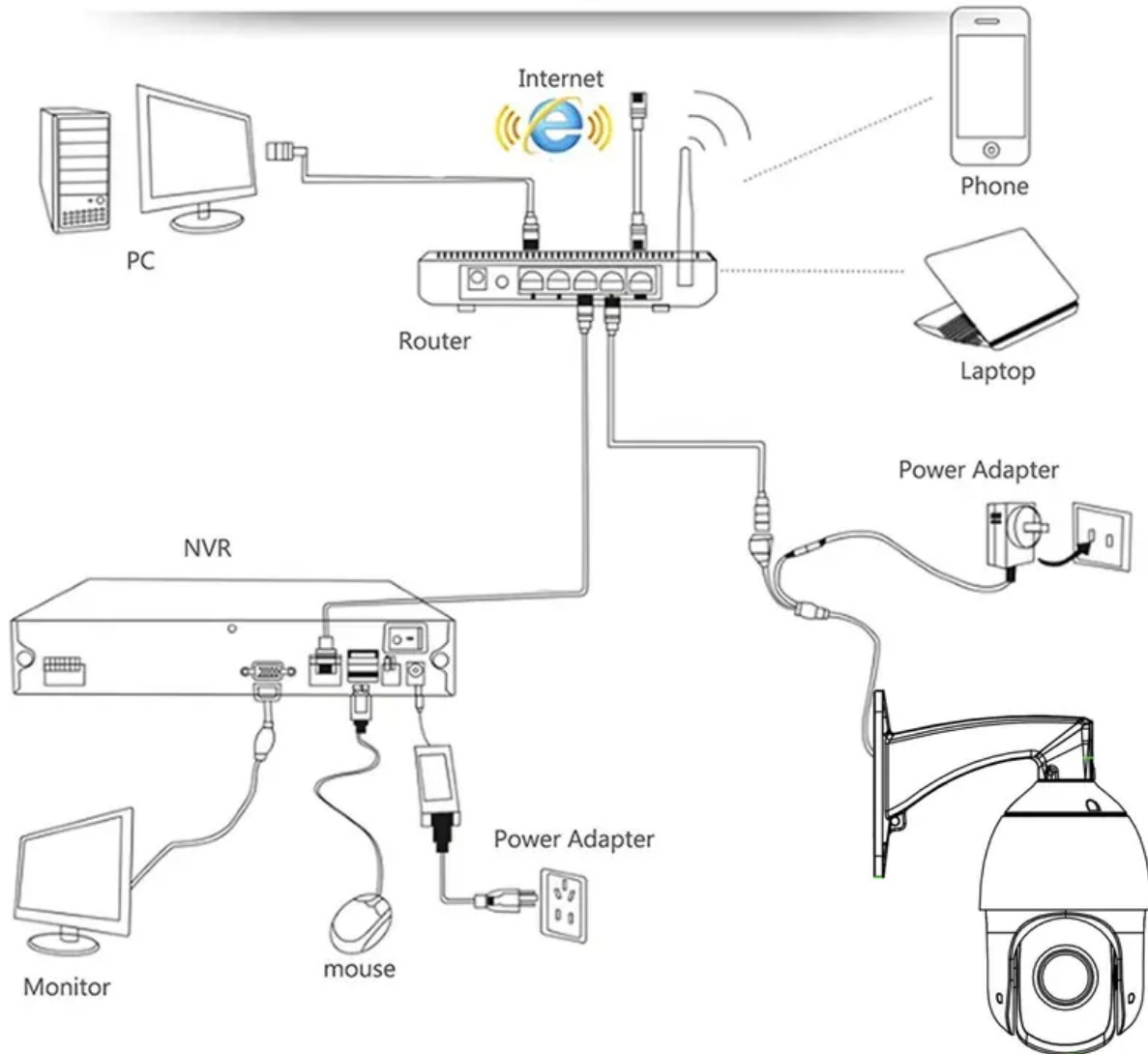


The connection diagram



The Camera can connect to either a NVR or a computer. The Camera comes with a POE Splitter. You can power the camera by a POE switch through an ethernet cable.

Web Login

(You can use VMS software to configure the camera if your web browser doesn't work)
After connect the camera to the computer, you can access the camera on web browser.

Camera Default IP: 192.168.1.188

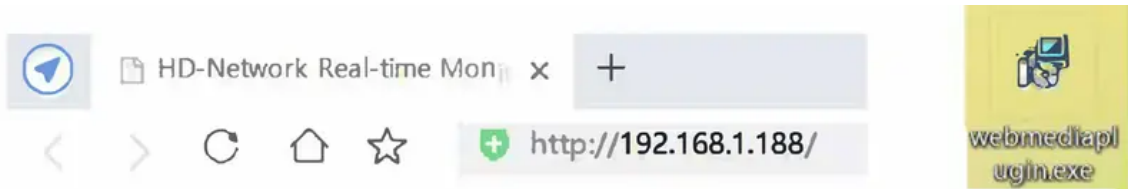
Subnet mask: 255.255.255.0

Gateway: 192.168.1.1

Step 1: You need to check whether the computer IP address is the same segment with the camera in 192.168.1.** before login. If not, you can modify the camera's IP address settings first by using the IPC Upgrade Tool as follows.



Step 2: Enter the camera IP address in the IE browser. You need to install Plug-in before you login at first time. If the installation is unsuccessful, you can go to the IE settings, allow the ActiveX Plug-in to run, close the browser and re-install.



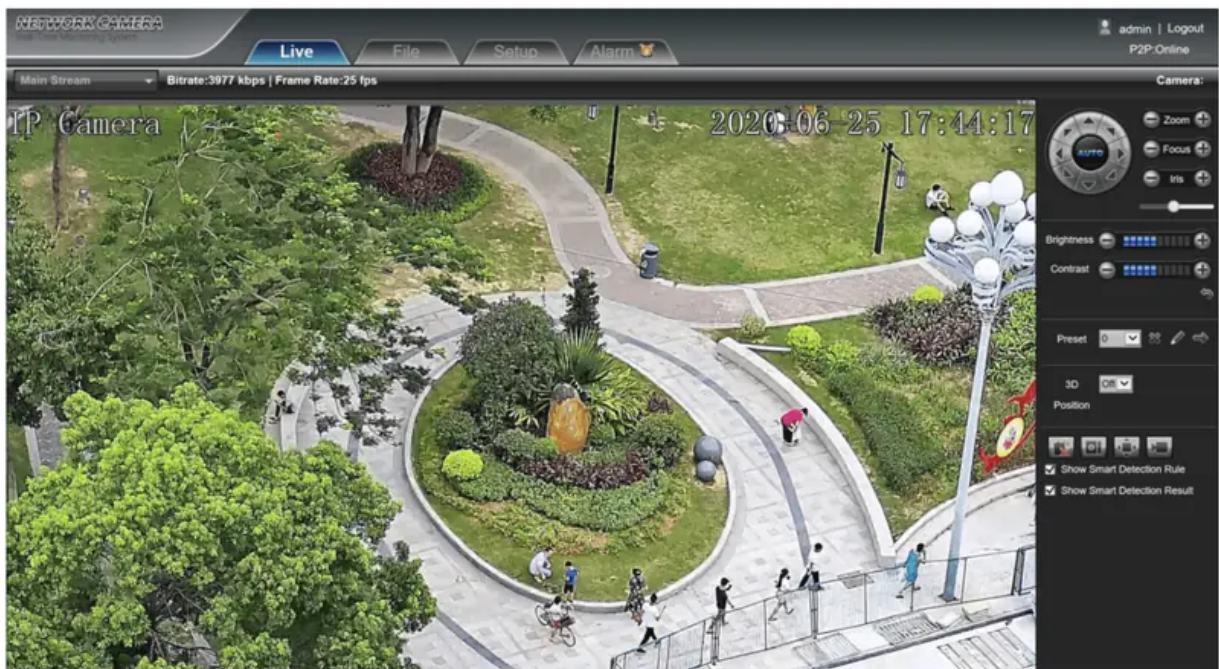
Step 3: Enter the login screen, then input the user name and password, user name: admin(default), password: 123456(default), select the "language", and then click the [login], you can preview Live image. (You can use VMS software to configure the camera if your web browser doesn't work)



Live preview

In the Live page, you can see the live images and perform the PTZ operation.

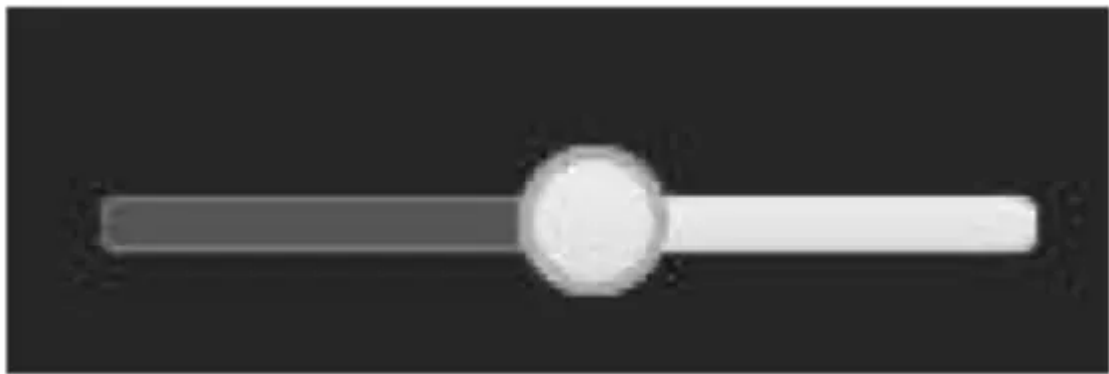




- Manual control Pan/ Tilt rotation
- Manual control Zoom in/out
- Manual control Focus



- Speed setting of manual control Pan/Tilt: the further the button is adjusted to the right, the faster the rotation speed.



- Adjust the brightness and contrast of the displayed image.



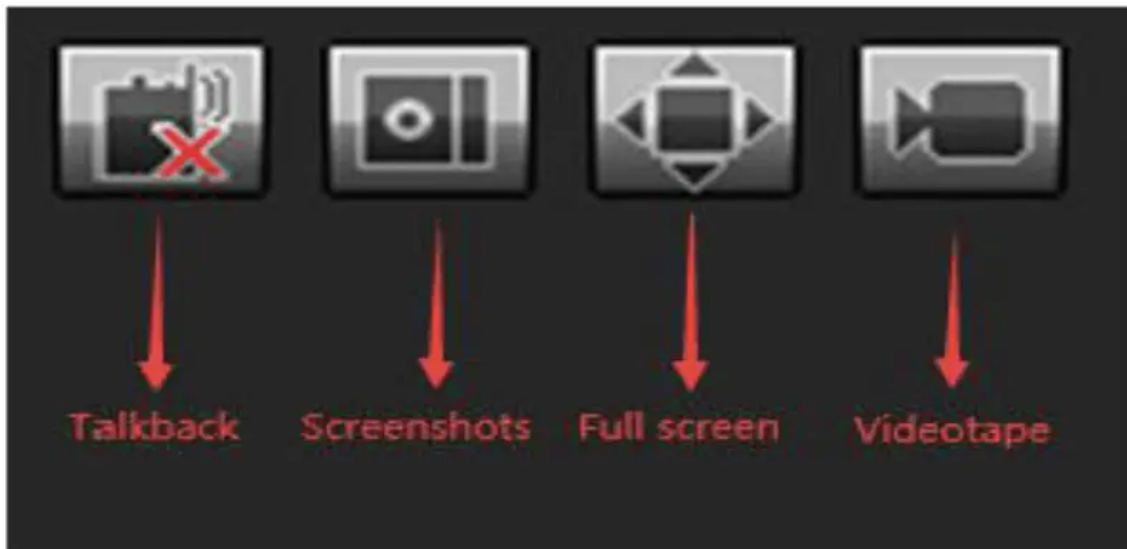
- Add preset / Call preset / Delete preset



- 3D position function switch, when turned on, you can control the camera rotation and lens zoom by drawing a frame on the screen with the mouse.

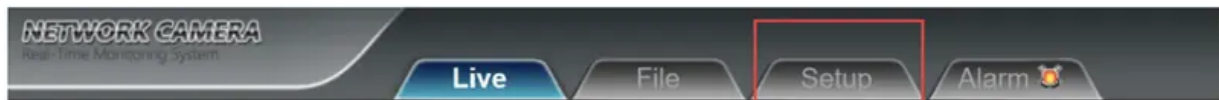


- Talkback / Screenshots / Full screen / Local record



Configuration

In **Setup** page, detailed parameter settings for the camera.

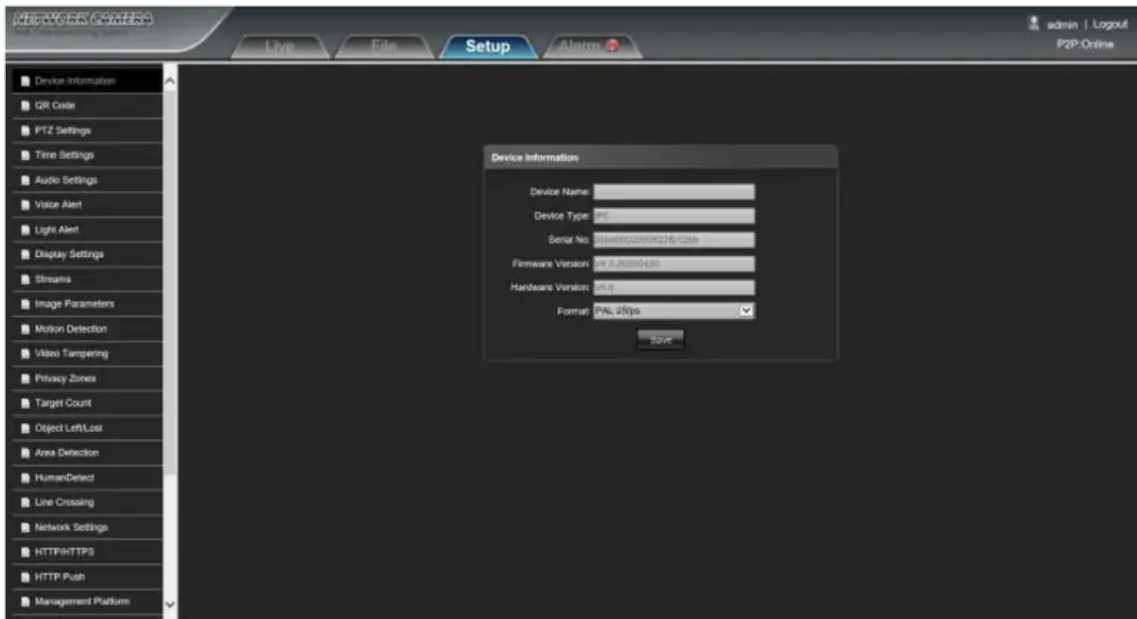


- **Networking Setting:** Can modify the camera IP address and service port numbers.

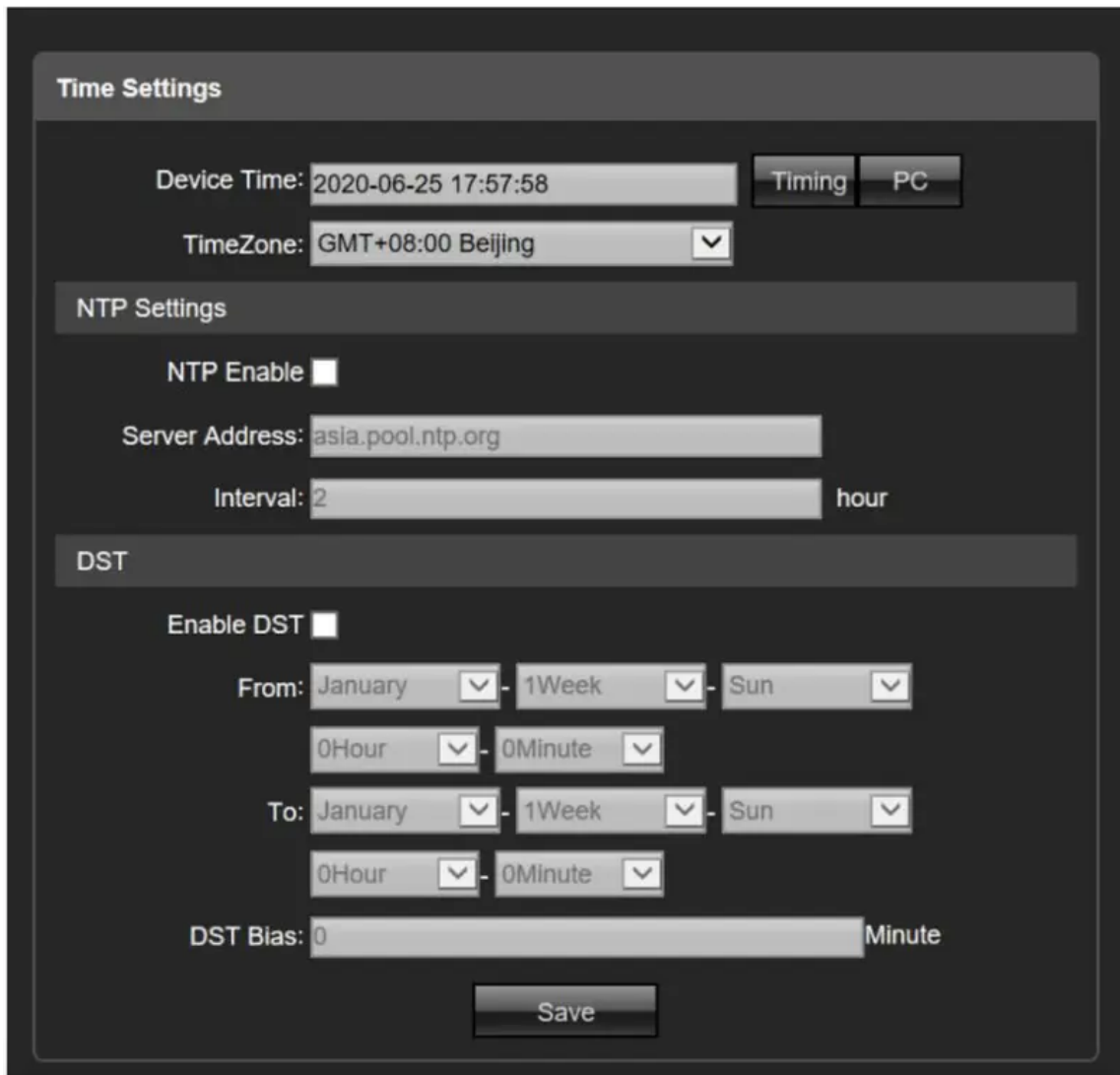
Network Settings

<p>IPv4 <input type="radio"/> DHCP <input checked="" type="radio"/></p> <p>Static IP <input type="radio"/></p> <p>IP Address: <input type="text" value="192.168.1.30"/></p> <p>Subnet Mask: <input type="text" value="255.255.255.0"/></p> <p>Gateway: <input type="text" value="192.168.1.1"/></p> <p>DNS 1: <input type="text" value="8.8.8.8"/></p> <p>DNS 2: <input type="text" value="8.8.4.4"/></p> <p>MAC: <input type="text" value="00:08:22:FB:12:BB"/></p>	<p>RTSP Port: <input type="text" value="554"/></p> <p>RTSP Validation: <input type="checkbox"/> HTTP-Base64 <input checked="" type="checkbox"/> HTTP-Digest</p> <p>RTMP Port: <input type="text" value="1935"/></p>
---	---

- **Device Informaton:** Can view device current software and hardware version information. Can set video format (PAL/NTSC)

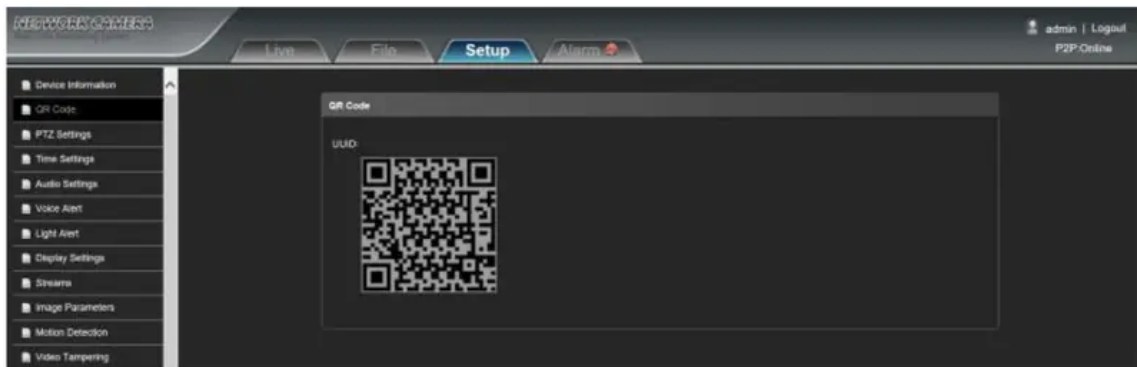


- **Time Settings:** Set device time and time zone.

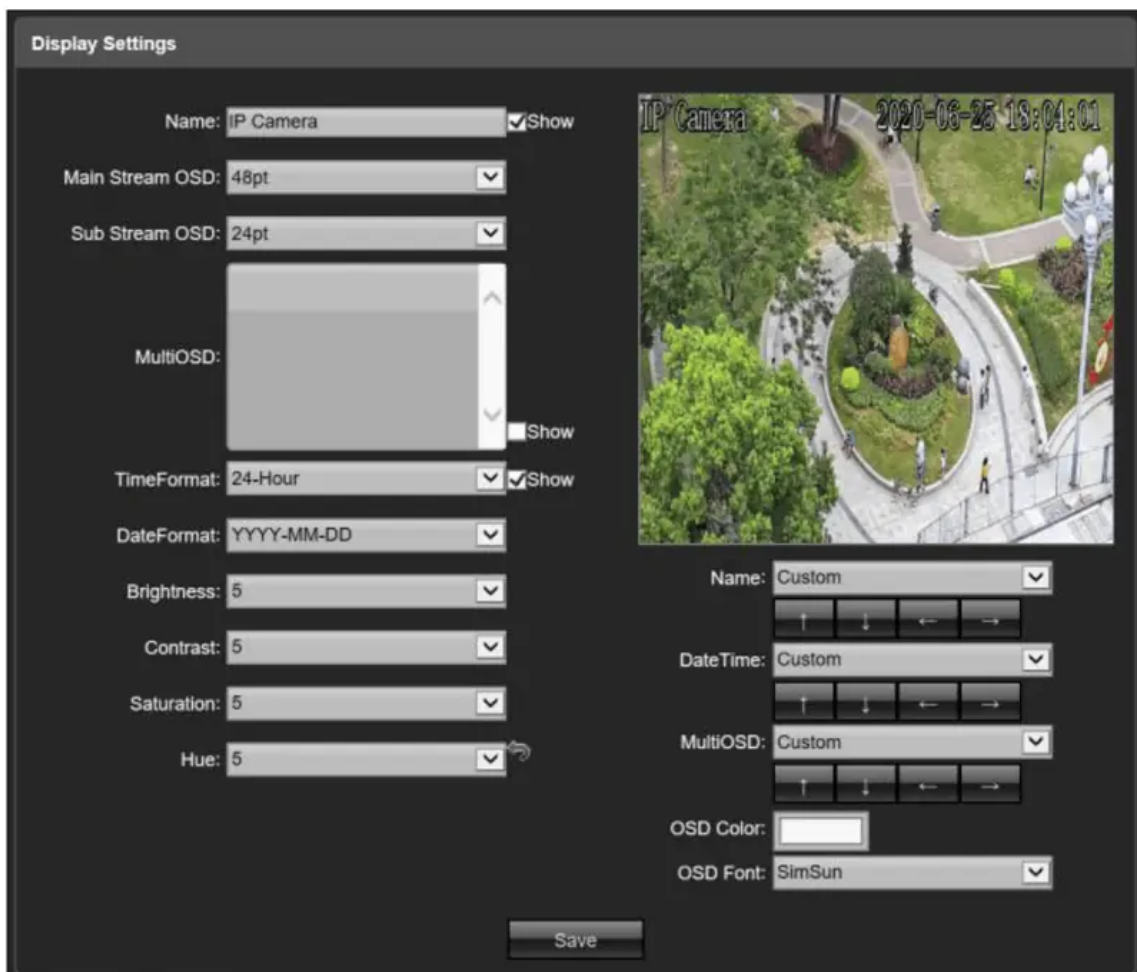


- **QR Code:** Scan the QR code to get the P2P remote access serial number





- **Voice Alert:** Set the volume, language, repetition times and alarm time period of the alarm voice



- **Streams** (Encoding Setting): Set the video format, resolution, Encoding style (H.264/H.265), bit rate and other parameters of the main stream and sub stream.

Voice Alert

Output Volume: 100 Language:

No.	Voice Content	Play Counts	Try
1	You are entering warning region, Please leave immediately.	3 <input type="text"/>	<input type="button" value="▶"/>
2	You are entering hazardous area, Please stay away.	3 <input type="text"/>	<input type="button" value="▶"/>
3	Please keep away from the dangerous height.	3 <input type="text"/>	<input type="button" value="▶"/>
4	You are entering surveillance area.	3 <input type="text"/>	<input type="button" value="▶"/>
5	Welcome.	3 <input type="text"/>	<input type="button" value="▶"/>
6	Please do not touch the valuables.	3 <input type="text"/>	<input type="button" value="▶"/>
7	Private Area, no admittance.	3 <input type="text"/>	<input type="button" value="▶"/>
8	No bathing in the dangerous deep water.	3 <input type="text"/>	<input type="button" value="▶"/>

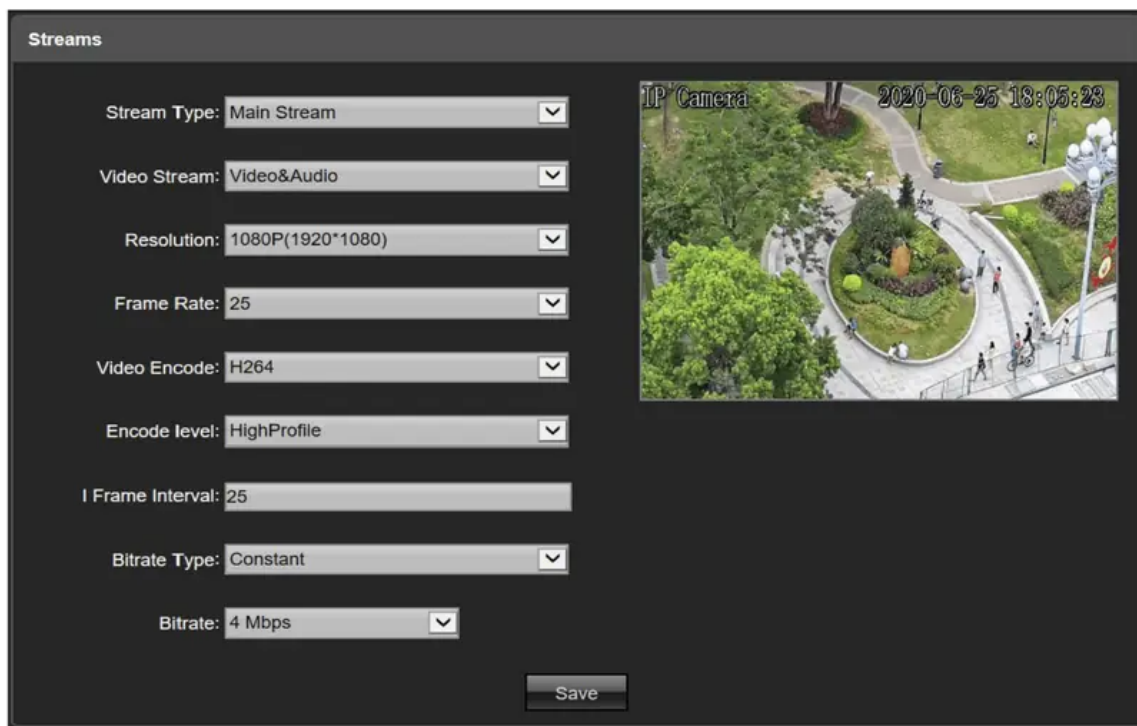
Arming Schedule

Whole Week: Week :

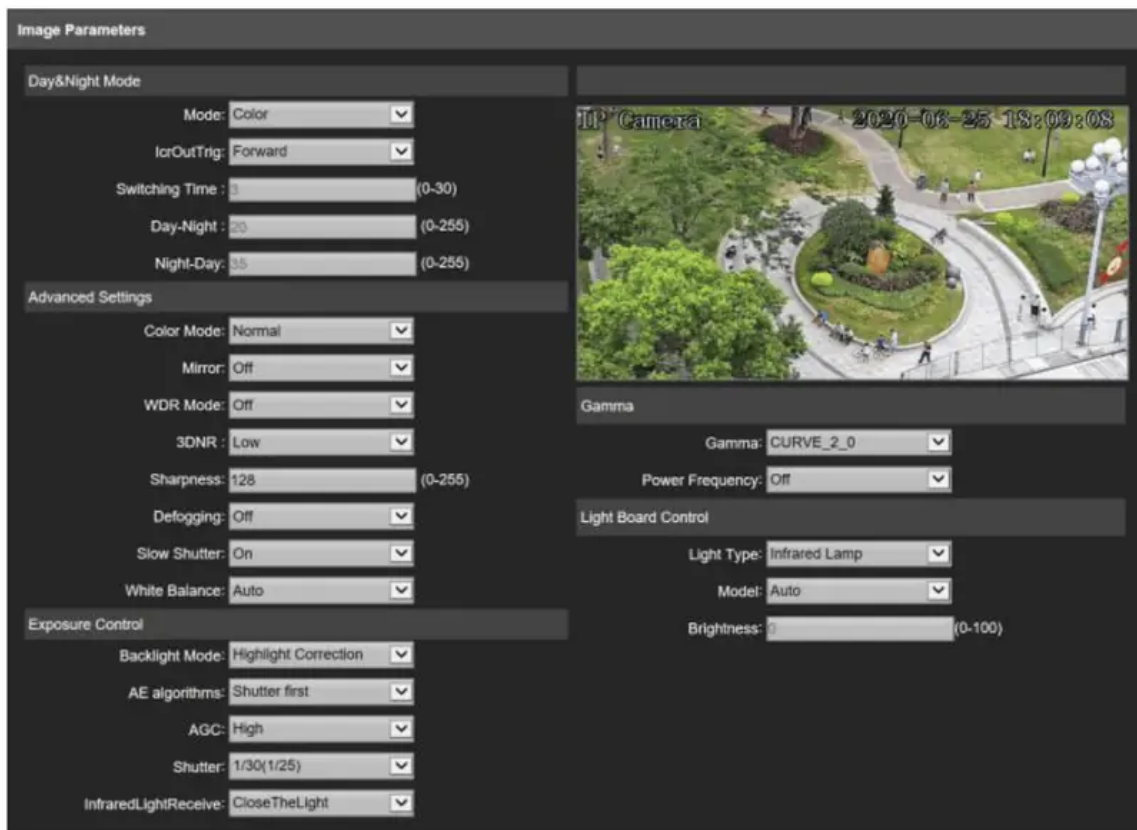
Period1: 0 0 - 23 59

Period2: 0 0 - 0 0

- **Image Parameters:** IP Camera image parameter configuration interface. If not necessary, please keep the preset parameters.



- **Motion Detection** (This function is disabled by default): You can set the sensitivity, detection area, arming time, linkage action, linkage voice, etc.



- **Motion Detection** (This function enable by default): You can set arming time, linkage action, linkage voice, and Detection area (The whole screen is the detection area by default).
 - **Mint humanoid pixel:** range is 30-300, IPC will detect humanoid pixel which is more than or equal to min humanoid pixel (blue frame).
 - **Set detection area:** to use mouse to click area which would be drew line on channel picture, to keep pressing mouse left key to move to any direction, it would be formed red frame, frame size is decided by user, if it is not suitable, user can erase, then reset it.

Motion Detection

Enable Sensitivity: 0

Arming Schedule				Area Setting			
Whole Week:	<input type="checkbox"/>	Week:	Mon				
Period1:	<input checked="" type="checkbox"/>	0	0			- 23	59
Period2:	<input type="checkbox"/>	0	0			- 0	0
Period3:	<input type="checkbox"/>	0	0			- 0	0
Period4:	<input type="checkbox"/>	0	0			- 0	0
Period5:	<input type="checkbox"/>	0	0			- 0	0
Period6:	<input type="checkbox"/>	0	0			- 0	0
Period7:	<input type="checkbox"/>	0	0			- 0	0
Period8:	<input type="checkbox"/>	0	0			- 0	0

Drawing Clear

Linkage Setting

PTZ: Preset0

Audio: 警戒区域, 请尽快离开

Light:

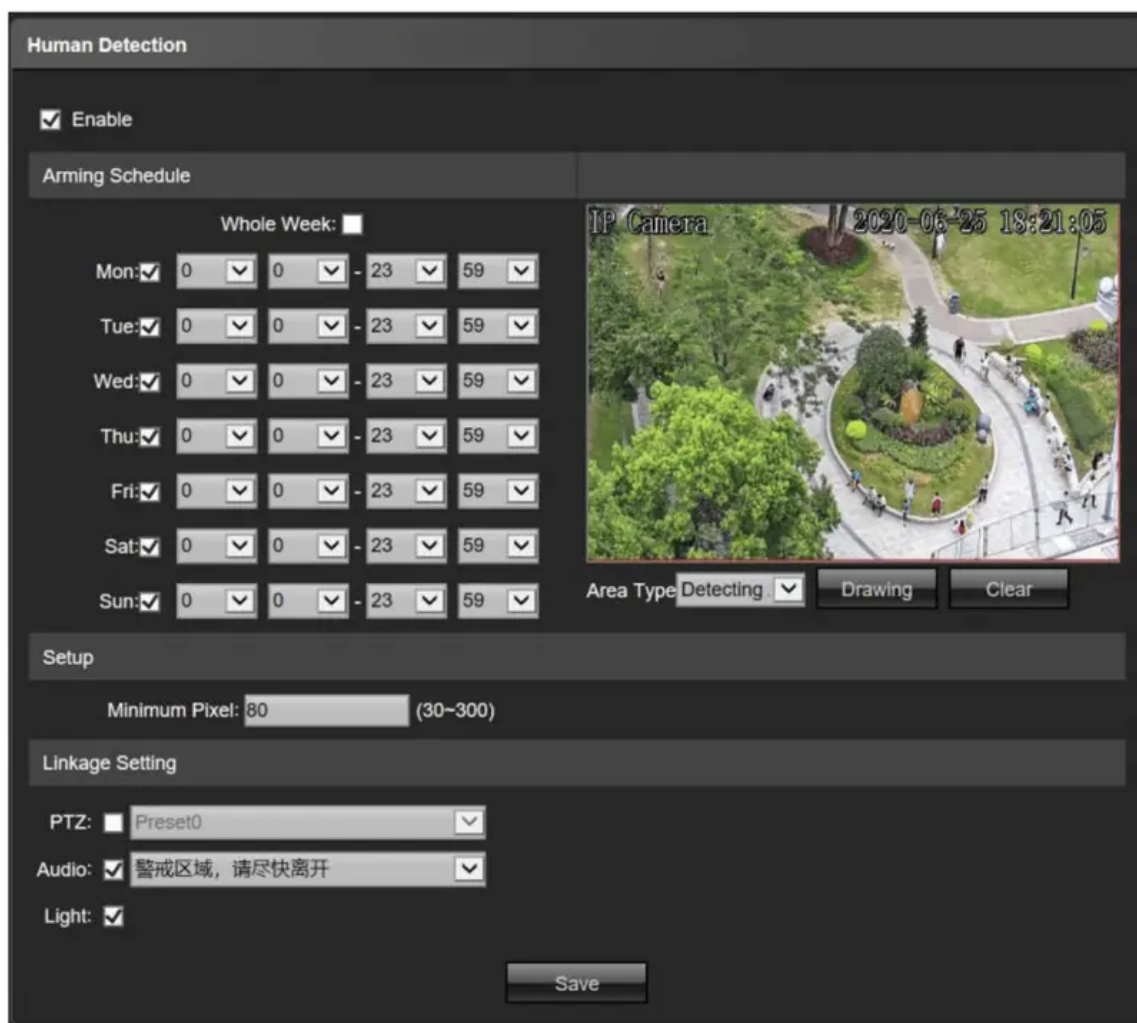
Save

Note: To use the auto-tracking function, human detection must be enable.

• **Restore:**

- Export configuration: export all configurations to PC
- Import configuration: import files into system
- Restore default: restore factory default setting
- Restart: restart device immediately

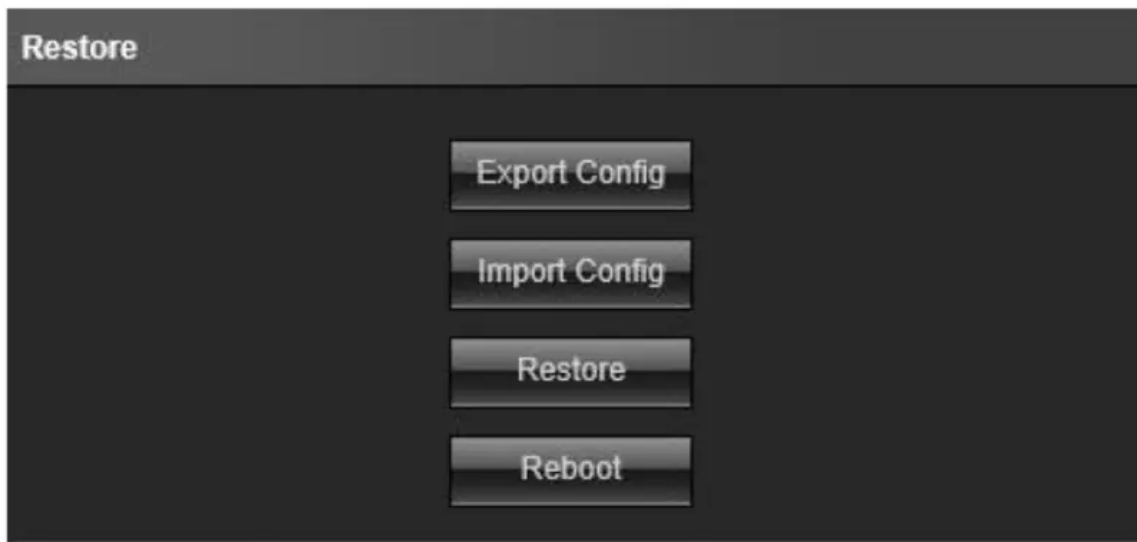




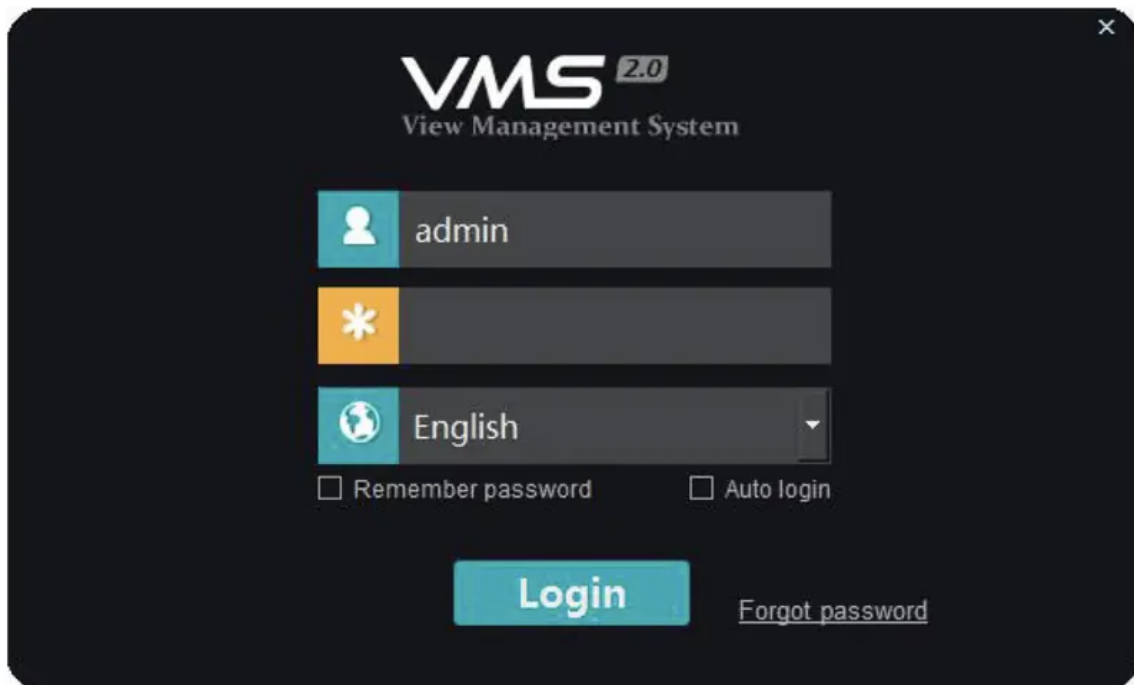
PC VMS client

PC VMS software can watch and manage multiple IP cameras at the same time.

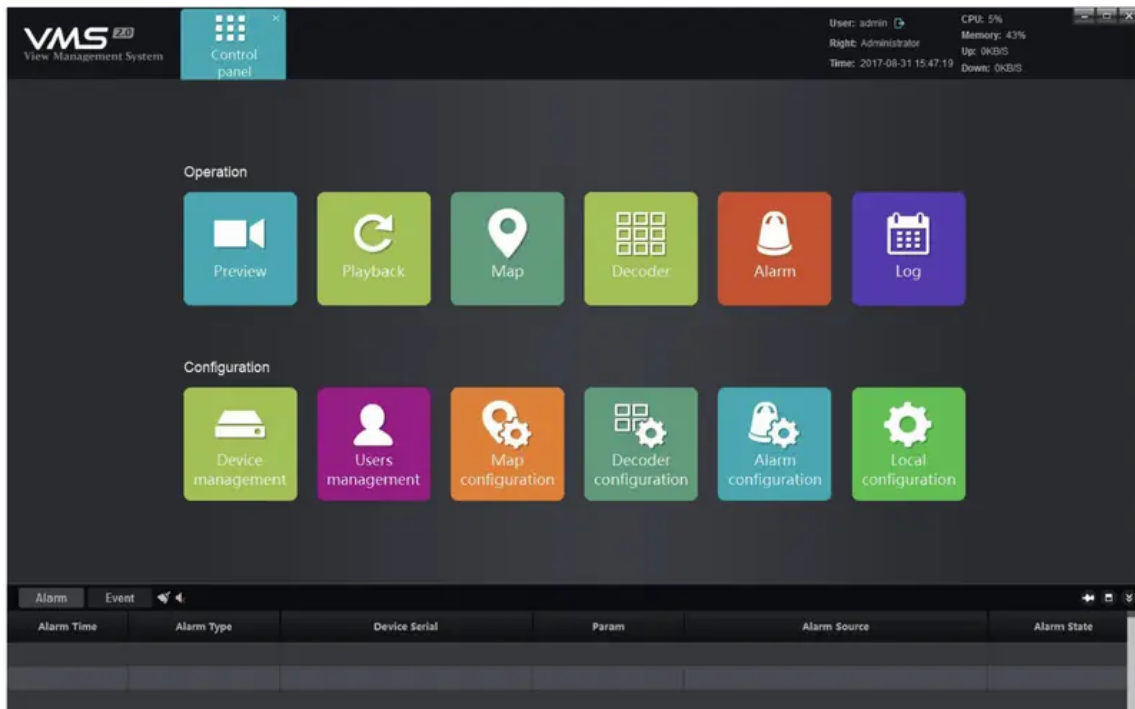
- **VMS Login:** The user can manually switch the language, the initial user name is admin, the initial password is 123456.



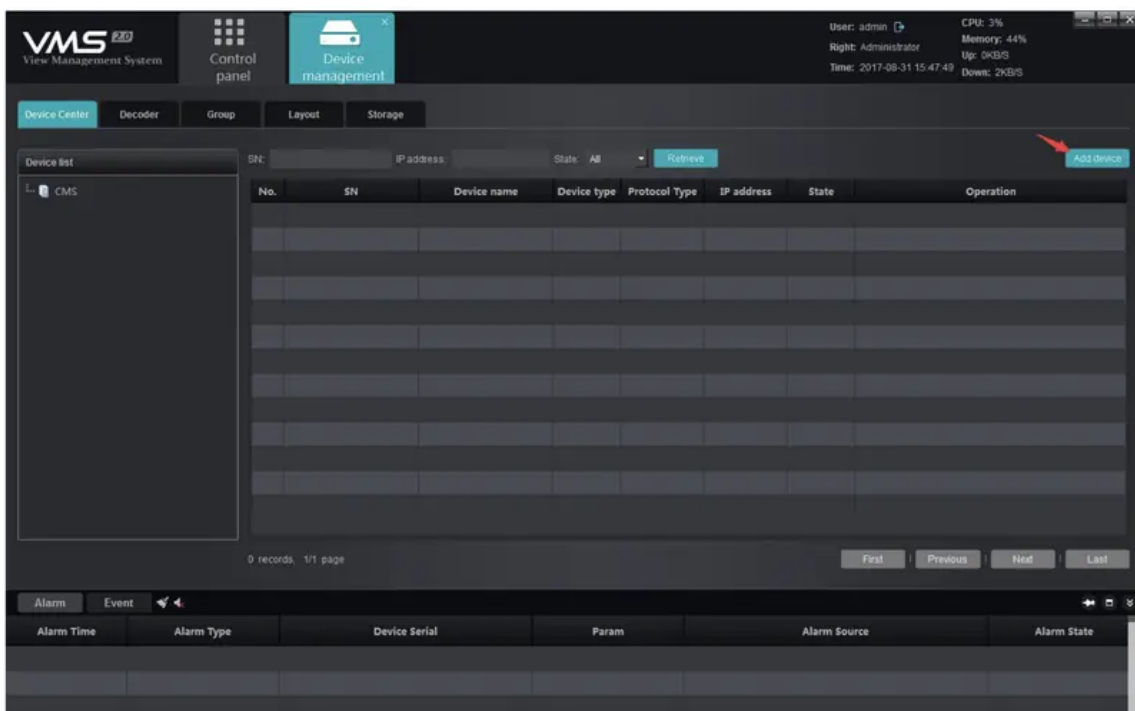
- **Main interface:** Display current system status and alarm information.



- **Device management:** Search and add devices on this window.

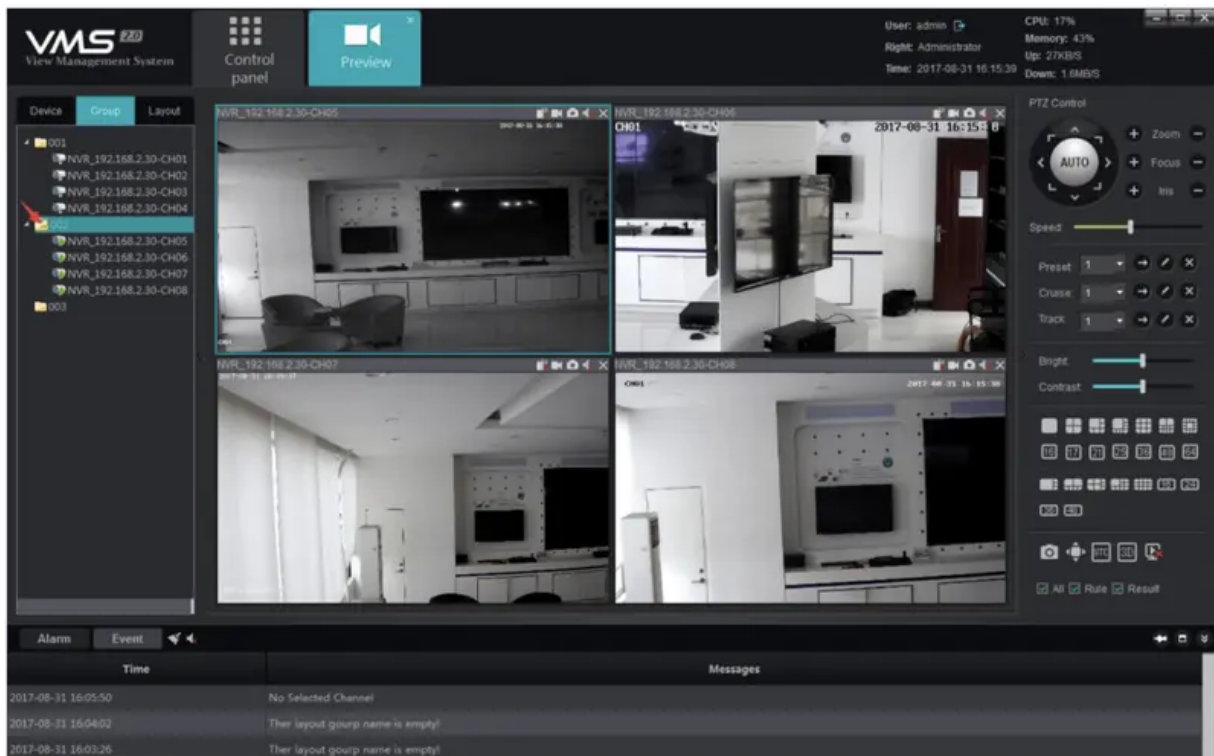


- **Preview:** In this window, you can see the real-time image of the added device



Auto - Tracking Function

Auto-tracking function based on human detection (IPC human detection function must be anable). When someone enetrs the screen or enters a designated area, the alarm will be triggered and the camera will zoom in and automatically track the movement of the person.



When the intelligent analysis function is enable, there are two kinds of humanoid detection automatic tracking mode:

- **Guard Tracking:** The PTZ camera is guarded at a designated location, tracked after the humanoid target is found, and returned to the guard position after tracking.
 - **Set guard position:** Add preset NO.53
 - **Start guard tracking:** Call preset NO.53
- **Cruise Tracking:** The PTZ camera cruises between a plurality of preset positions, and the humanoid target is tracked during the cruise process, and the cruise is continued after the tracking is completed.
 - **Set cruise tracking position:** Add preset NO.54-58
 - **Start cruise tracking:** Call preset NO.54
- **Tracking duration setting**
 - **Call preset NO.97+(NO.125-130):** Set Tracking duration to (15s-40s). For example: 97+125 is 15s; 97+126 is 20s 97+130 is 40s etc. (The default is 15s).
- **Park action setting:** After setting the Park action, the PTZ camera will automatically rotate to the preset position and start Tracking without manual operation.
 - **Call preset NO.97+NO.190:** Set Park action to preset NO.53 guard tracking.
 - **Call preset NO.97+NO.191:** Set Park action to cruise tracking (Preset NO. 54-58)

- **Call preset NO.97+(NO.160-169):** To set up Park Time (15s-24s)
- **Call preset NO.97+(NO.170-179):** Set Park Time to (30s-75s)

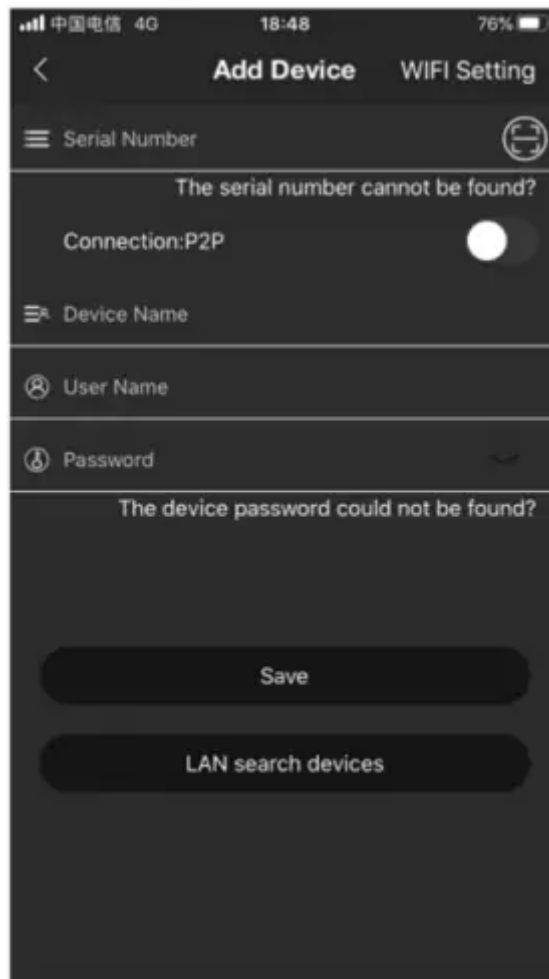
Note: Some models do not support auto-tracking function

Remote APP

Mobile phone APP Store search and download and install: SmartViewer pro (You can also scan the QR code to download)

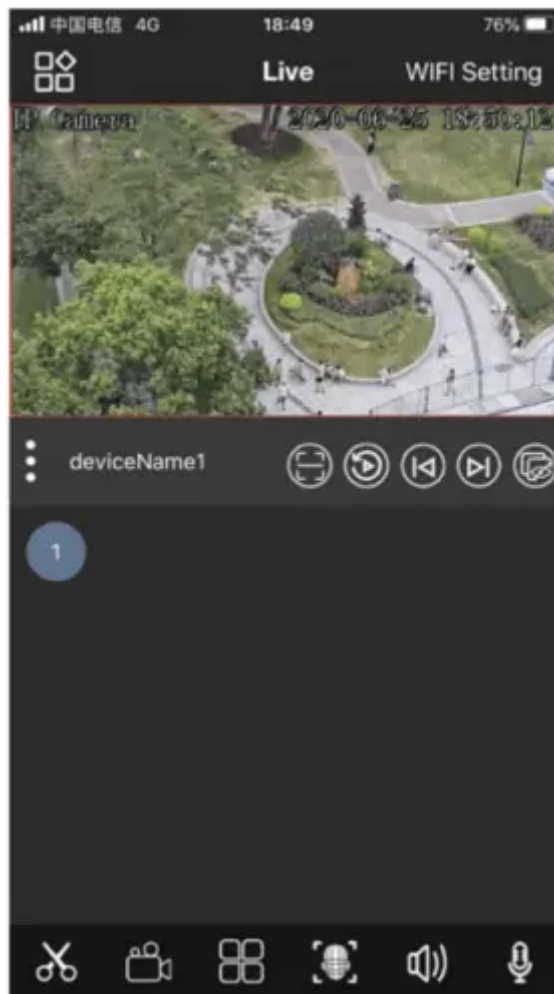


Scan the QR code or LAN search to add devices

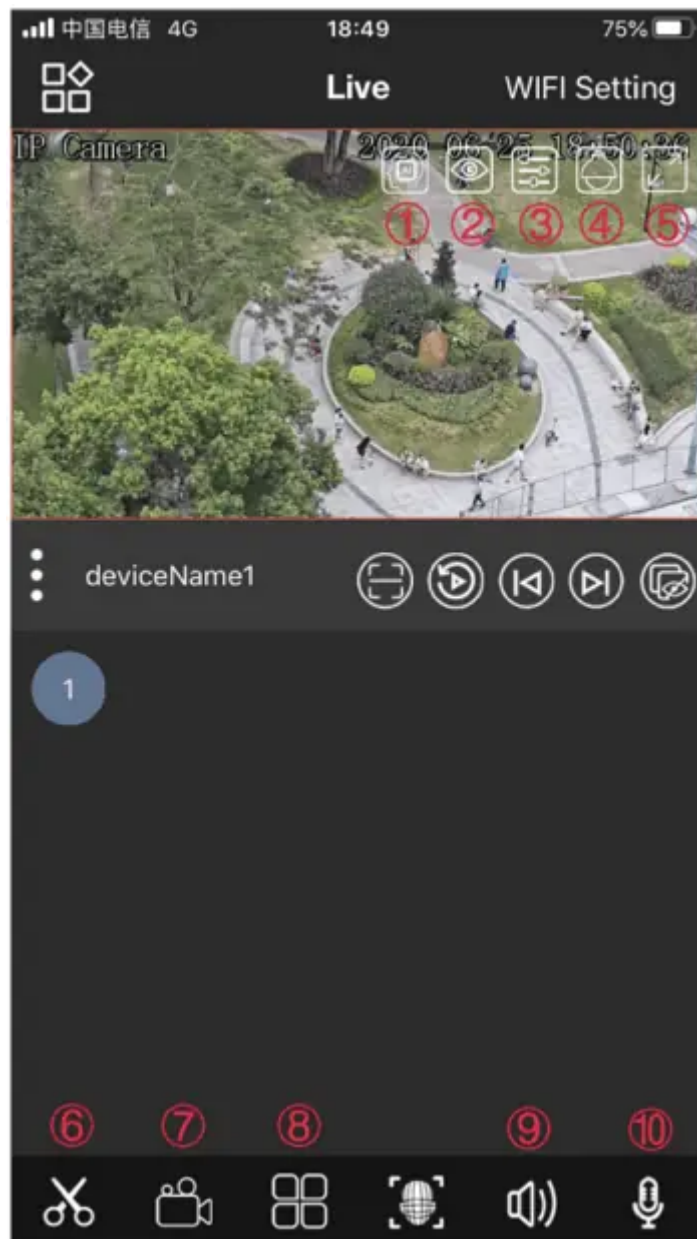


Connection mode selection P2P. You can see the remote image.

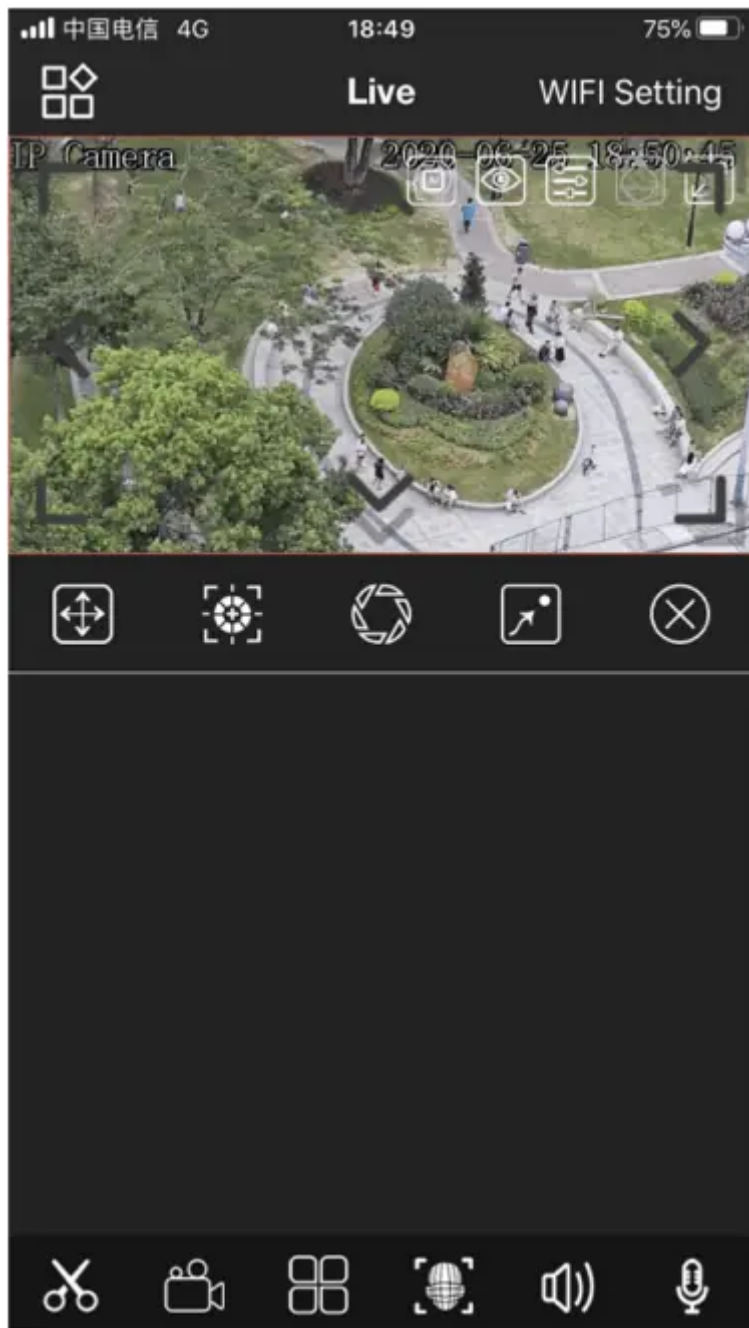




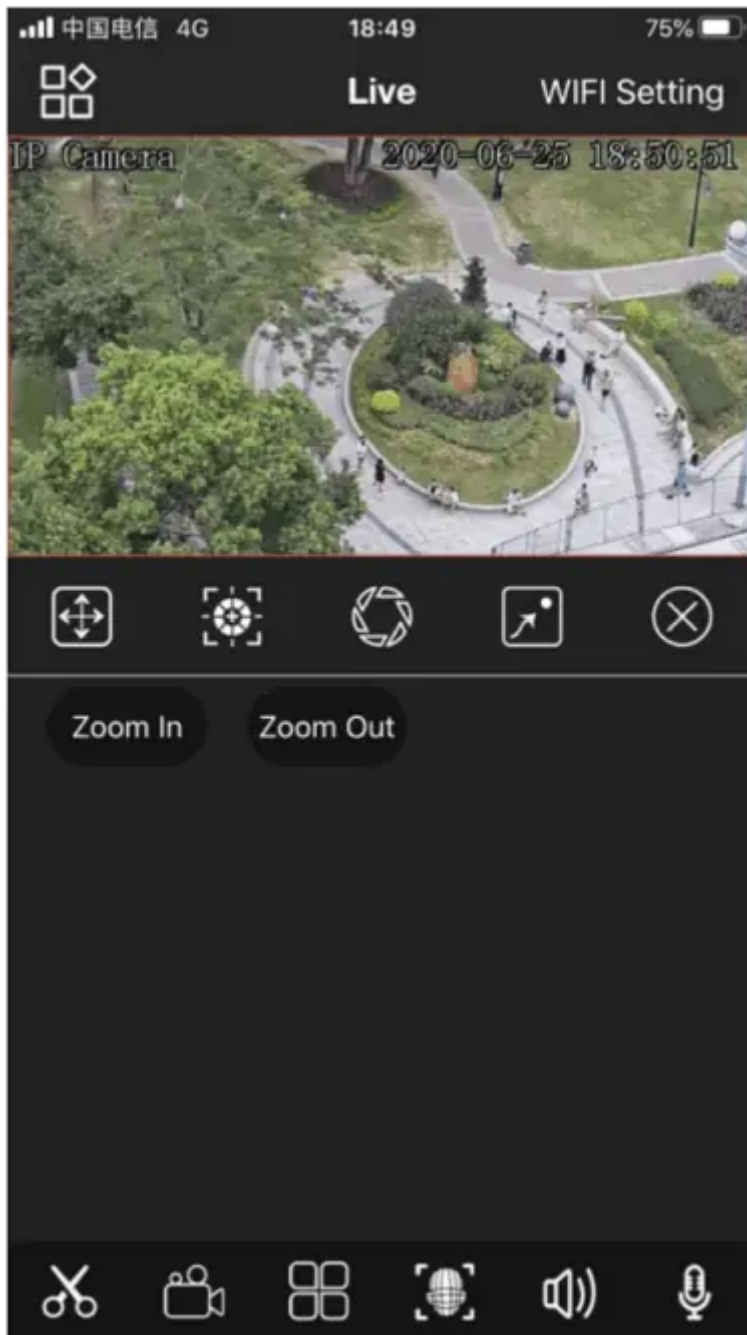
1. AI intelligence
2. Definition selection
3. Brightness adjust
4. PTZ control
5. Full screen
6. Screenshot
7. Mobile phone recording
8. Split screen viewing
9. Audio
10. Talkback



Swipe on the screen to control rotation

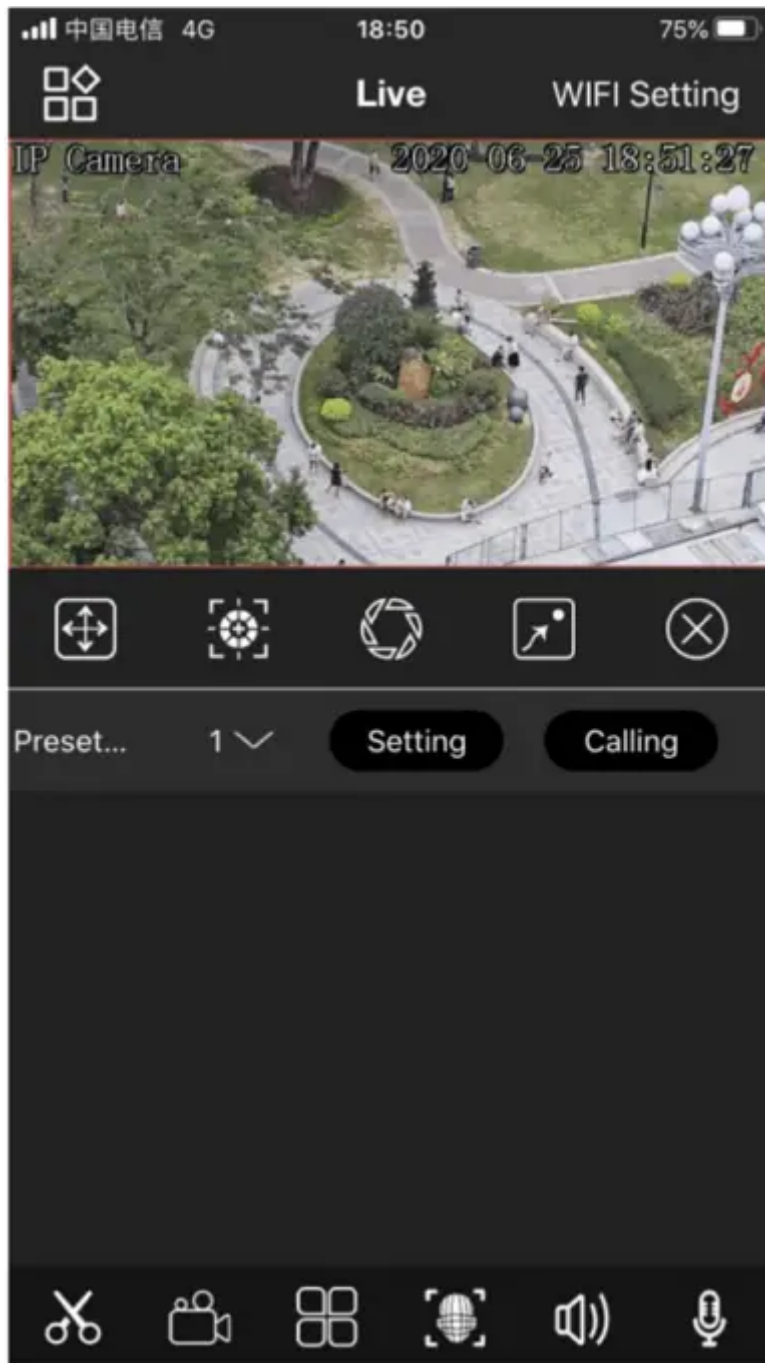


Zoom in / Zoom out

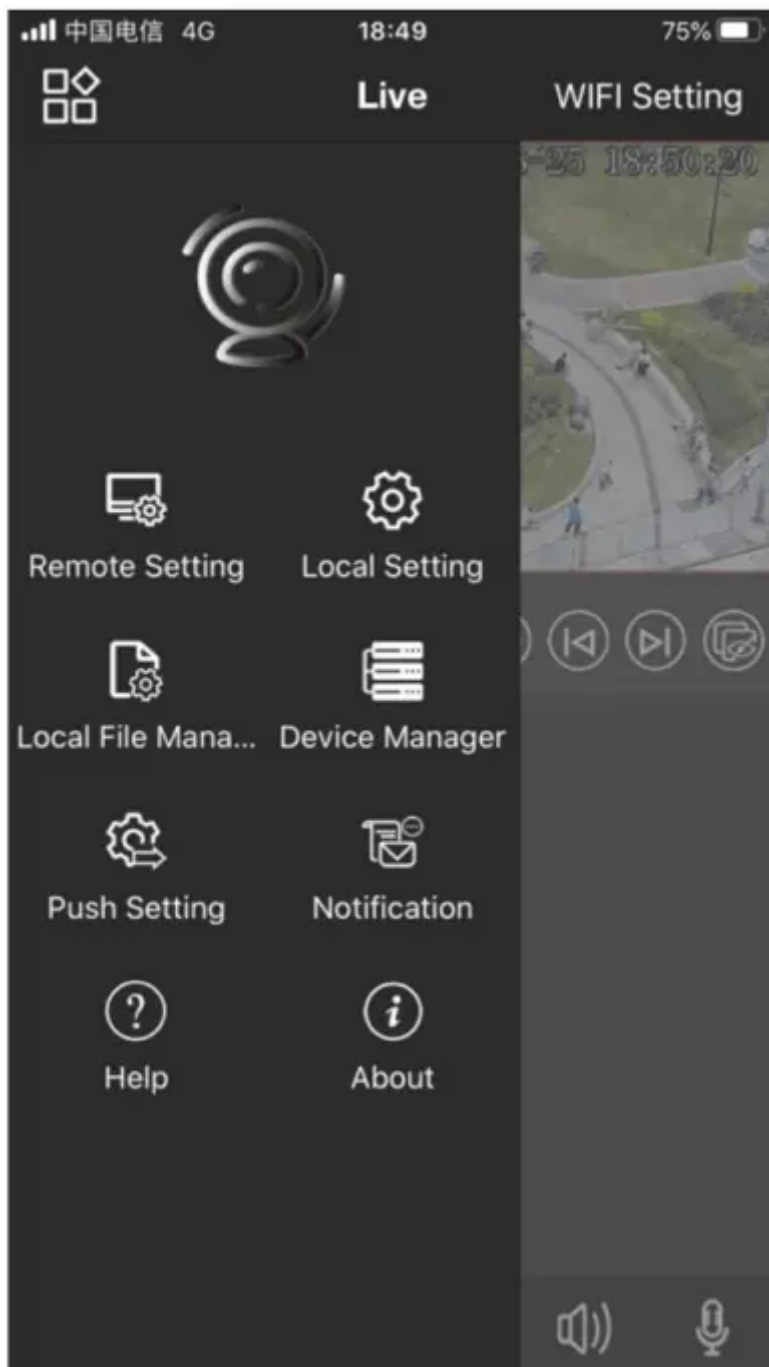


Set preset / Call preset





Main menu



Special preset instructions list

Presets operation	Function
Call preset NO.53*	Start Preset NO.53 guard tracking
Call preset NO.54*	Start Cruise tracking (Preset NO.54-58)
Call preset NO.80	Start tracking at current position (After the tracking ends, stop at the position where the tracking is finished, until the humanoid is detected, and start tracking again)
Set preset NO.81(or NO.50)	Set left boundary of A-B scan
Set preset NO.82	Set right boundary of A-B scan
Call preset NO.82	Start A-B scan
Call preset NO.81	PTZ camera Re self checking
Call preset NO.83	Clear all the presets
Call preset NO.84	Start Pattern
Call preset NO.88(or NO.51)	Start cruise 1(preset NO.1- NO.10)
Call preset NO.89	Start cruise 2(preset NO.11- NO.20)
Call preset NO.90	Start cruise 3(preset NO.21- NO.30)
Call preset NO.91	Start cruise 4(preset NO.31- NO.40)
Call preset NO.92(or NO.50)	Restore factory default(PTZ setting)
Call preset NO.98(or NO.52)	Start 360°Horizontal auto scanning
Call preset NO.100(or NO.60)	Manually turn ON IR
Call preset NO.101(or NO.61)	Manually turn OFF IR
Call preset NO.102(or NO.62)	Automatic IR control mode

Presets operation	Function
Continuous call preset NO.97 & NO.108	Lens focus recalibration
Continuous call preset NO.97 & NO.113	Enable flashing alarm function(default)
Continuous call preset NO.97 & NO.114	Disable flashing alarm function
Continuous call preset NO.97 & NO.115	Set focus mode to one-time mode :KF (Focus only once after PTZ control)
Continuous call preset NO.97 & NO.116	Set focus mode to auto mode : AF(default)
Continuous call preset NO.97 & NO.125	Set Tracking duration to 15s(default)
Continuous call preset NO.97 & NO.125	Set Tracking duration to 20s
Continuous call preset NO.97 & NO.126	Set Tracking duration to 25s
Continuous call preset NO.97 & NO.127	Set Tracking duration to 30s
Continuous call preset NO.97 & NO.128	Set Tracking duration to 35s
Continuous call preset NO.97 & NO.129	Set Tracking duration to 40s
Continuous call preset NO.97 & NO.180	Disable Park action
Continuous call preset NO.97 & NO.181	Set Park action to 360 ° Horizontal auto scanning
Continuous call preset NO.97 & NO.182	Set Park action to A-B scan
Continuous call preset NO.97 & NO.183	Set Park action to Preset NO.1
Continuous call preset NO.97 & NO.184	Set Park action to Preset NO.8
Continuous call preset NO.97 & NO.185	Set Park action to Cruise 1(preset NO.1- 10)
Continuous call preset NO.97 & NO.186	Set Park action to Cruise 2(preset NO.11- 20)
Continuous call preset NO.97 & NO.187	Set Park action to Cruise 3(preset NO.21- 30)
Continuous call preset NO.97 & NO.188	Set Park action to Cruise 4(preset NO.31- 40)
Continuous call preset NO.97 & NO.189	Set Park action to Pattern

Presets operation	Function
Continuous call preset NO.97 & NO.190	Set Park action to preset NO.53 guard tracking
Continuous call preset NO.97 & NO.191	Set Park action to cruise tracking(Preset NO.54-58)
Continuous call preset NO.97 & NO.160	Set Park Time to 15s (default)
Continuous call preset NO.97 & NO.161	Set Park Time to 16s
⋮	And so on by 1 second per gear
Continuous call preset NO.97 & NO.169	Set Park Time to 24s
Continuous call preset NO.97 & NO.170	Set Park Time to 30s
Continuous call preset NO.97 & NO.171	Set Park Time to 35s
⋮	And so on by 5 second per gear
Continuous call preset NO.97 & NO.179	Set Park Time to 75s
Continuous call preset NO.97 & NO.200	Set preset residence time of cruise to 10s (default)
Continuous call preset NO.97 & NO.201	Set preset residence time of cruise to 15s
⋮	And so on by 5 second per gear
Continuous call preset NO.97 & NO.215	Set preset residence time of cruise to 85s
Continuous call preset NO.97 & NO.225	Set the scan speed to the Slowest level
Continuous call preset NO.97 & NO.226	Set the scan speed to the Slower level
Continuous call preset NO.97 & NO.227	Set the scan speed to the Medium level
Continuous call preset NO.97 & NO.228	Set the scan speed to the Faster level
Continuous call preset NO.97 & NO.229	Set the scan speed to the Fastest level

Warning



This content is compiled from multiple sources and is provided for reference purposes only. It may not be complete or fully applicable to all situations. If you are unable to resolve your issue, please contact the product manufacturer or an authorized service provider for official support.

Document generated by [ManualsFile](#)