

User Manual for Electric Shaver



## IMPORTANT SAFETY INSTRUCTIONS

When using an electrical appliance, basic precautions should always be followed, including the following:

Read all instructions before using this appliance.



When disconnected, the hand-held part of this shaving appliance may be used in a bath or shower. For safety reasons this appliance can only be operated cordless.

### DANGER

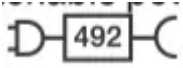
To reduce the risk of electric shock:

1. The charger unit is not for immersion in water or for use in shower.
2. Do not reach for a charger that has fallen into water. Unplug immediately.
3. Do not place, store or charge the appliance where it can fall or be pulled into a tub or sink. Do not place in or drop into water or other liquid.
4. Except when charging, always unplug this appliance from the electrical outlet immediately after using.
5. This appliance is provided with a special cord set with integrated Safety Extra Low Voltage power supply. Do not exchange or manipulate any part of it.
6. Do not use an extension cord with this appliance.
7. Unplug this appliance before cleaning.

### WARNING

To reduce the risk of burns, fire, electric shock, or injury to persons:

1. This appliance is not intended for use by persons (including children) with reduced physical, sensory or mental capabilities, or lack of experience and knowledge, unless they have been given supervision or instruction concerning use of the appliance by a person responsible for their safety. Children should be supervised to ensure that they do not play with the appliance.
2. Use this appliance only for its intended use as described in this manual. Do not use attachments not recommended by the manufacturer.
3. Never operate this appliance if it has a damaged cord or plug, if it is not working properly, if it has been dropped or damaged, or if the power supply has been dropped into water. Return the appliance to a service center for examination and repair.

4. Keep the cord away from heated surfaces.
5. Never drop or insert any object into any opening of the appliance.
6. Do not use outdoors or operate where aerosol (spray) products are being used or where oxygen is being administered.
7. Do not use this appliance with a damaged or broken foil, as serious skin injuries may occur.
8. Always attach plug to appliance first, then to outlet. To disconnect, turn all controls off, then remove plug from outlet.
9. When plugging to an electrical outlet outside North America, use a plug adapter to match the outlet's pin configuration.
10. **Caution:** The battery used in this device may present a fire or chemical burn hazard if mistreated. Do not disassemble, heat above 100 °C (212 °F), or incinerate.
11. To recharge the battery, only use the detachable power supply provided with this appliance. If the appliance is marked , only use Braun power supplies coded 492-XXXX.

**This product is for household use only.**

## Caution

Keep power supply and charging stand dry.

Do not expose the appliance to temperatures higher than 50° C / 122° F for extended periods of time. The brush (03-BR) must not be used on damaged or irritated skin or on wounds. If skin irritation occurs, discontinue use.

Avoid direct contact with eyes and hairline.

When the distance comb is removed, the trimmer should not be pressed into the skin. Risk of injury! The body trimmer (06-BDT) must only be used with comb attachment in delicate areas.

## Important

Do not open the appliance! The built-in rechargeable batteries can only be replaced by an authorized Braun Service center.

Only at the end of the product's useful life, disassemble the rechargeable battery for disposal reasons: Disassemble the housing as shown in the battery removal pictures, remove the rechargeable battery and recycle or dispose of properly, according to local guidelines. Caution: Disassembling the appliance will destroy it and invalidate the warranty.

The shaver head needs cleaning under hot running water after each foam or gel usage! The brush needs to be cleaned with cool running water after each usage! Switch the shaver on and rinse until

all residues have been removed. For hygienic reasons, do not share this appliance with other persons.

Subject to change without notice.

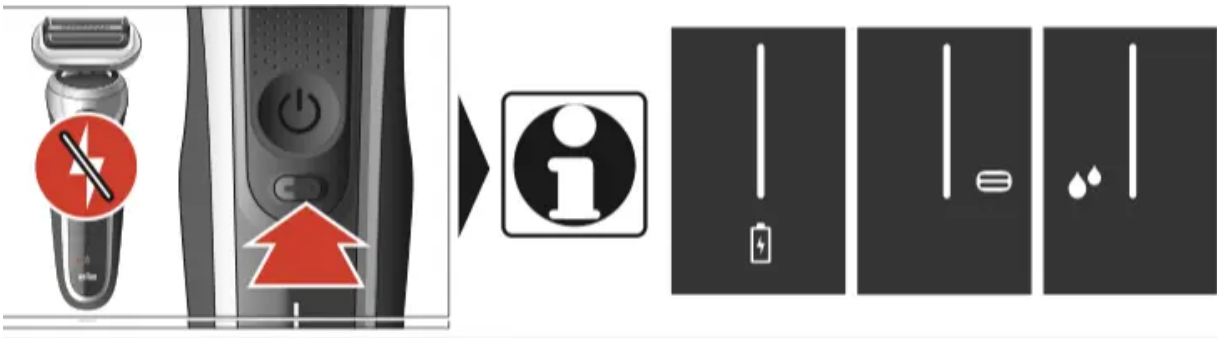
Battery removal for disposal only



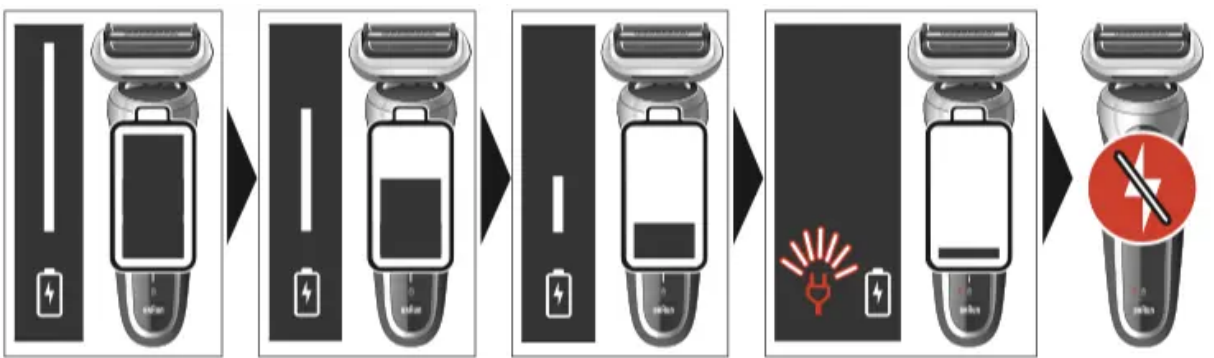
## Display



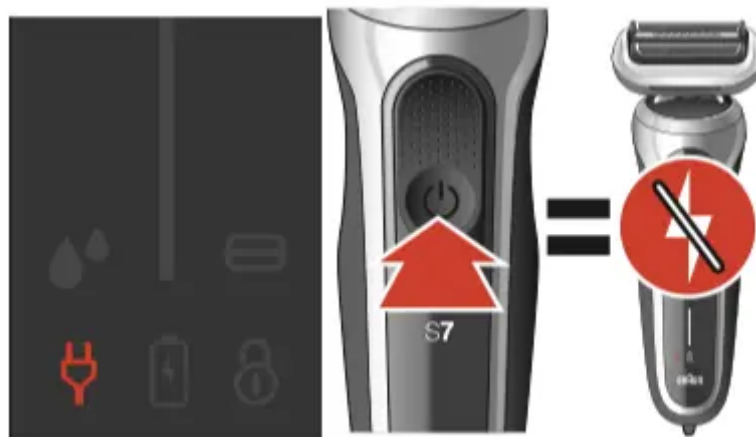
Dashboard

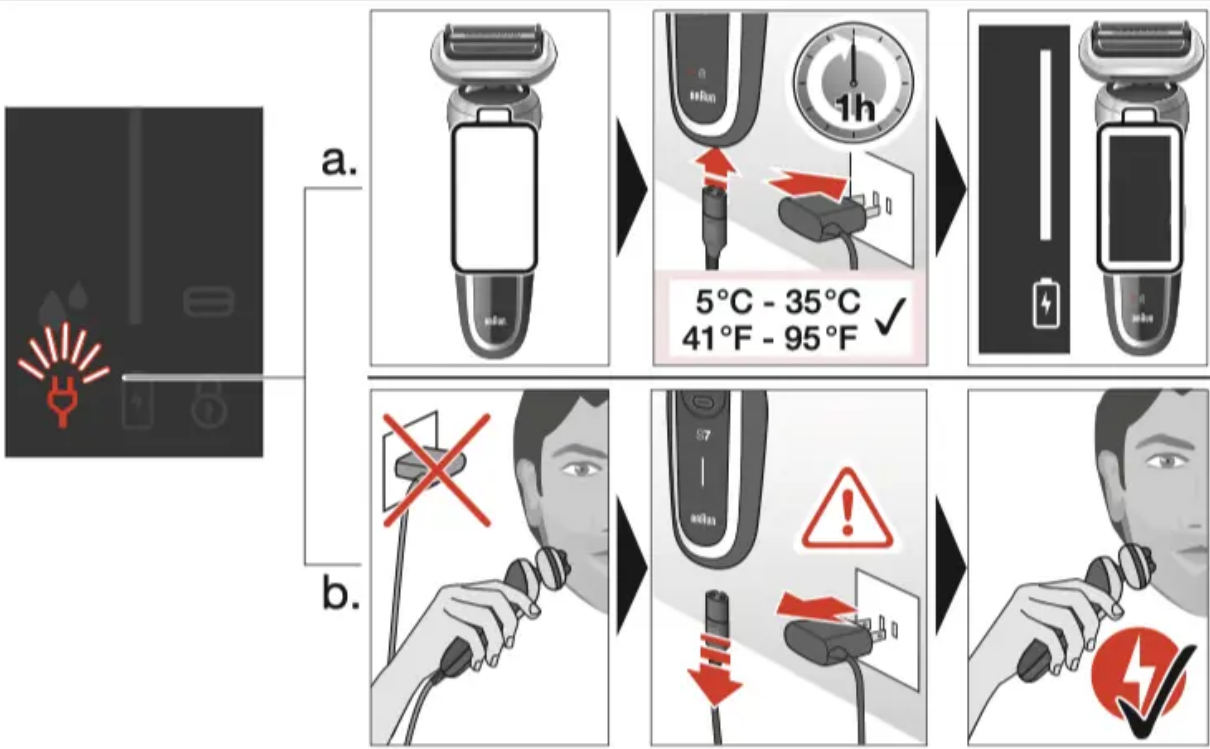


Battery indicator

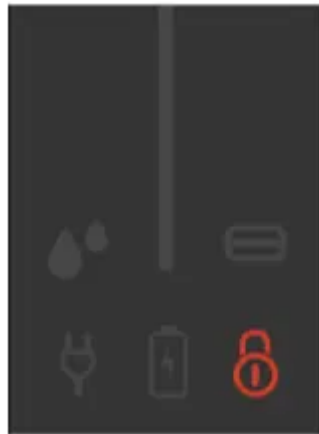


Plug indicator



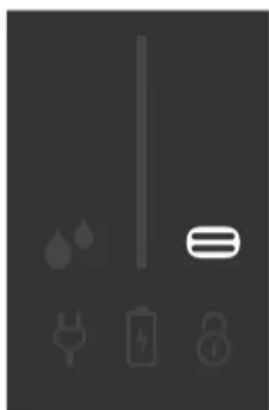


Travel lock indicator



Replacement indicator



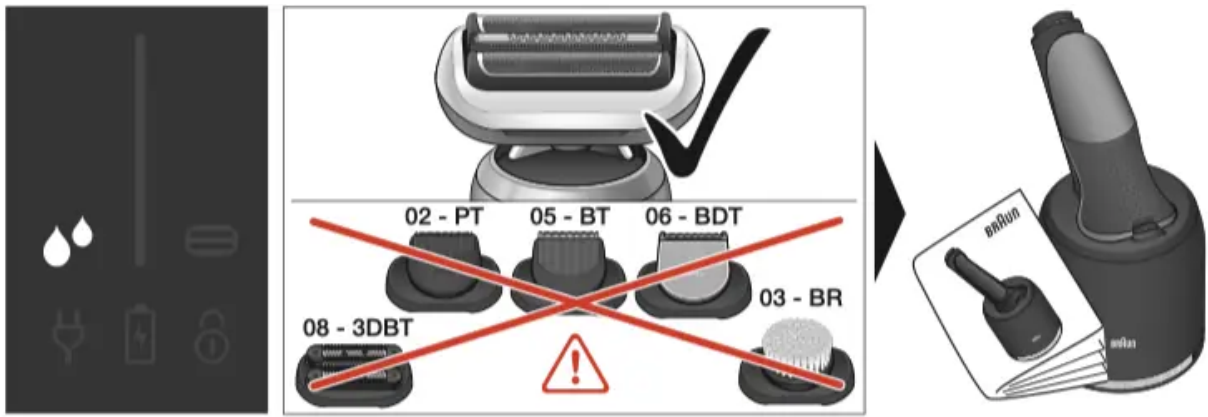


73S

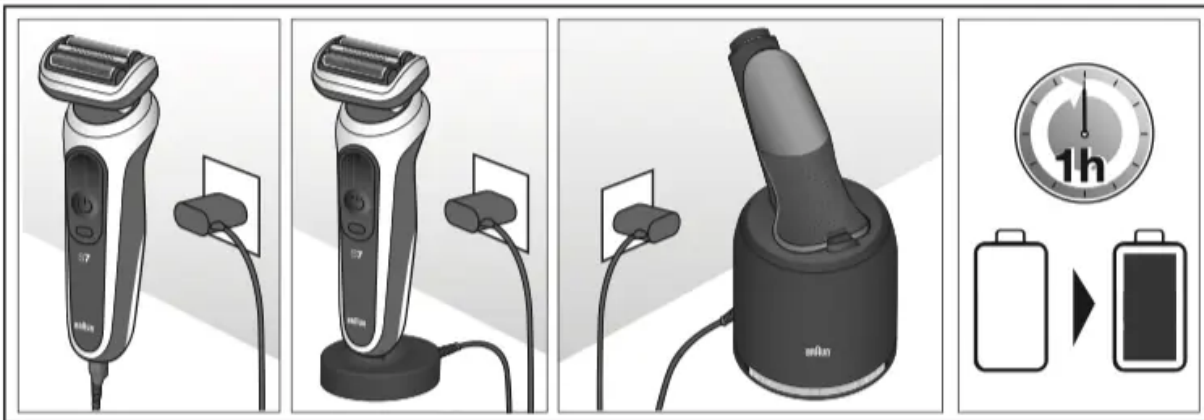
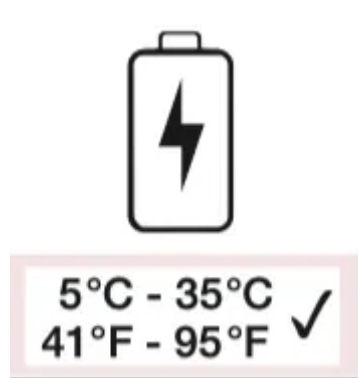


Cleaning indicator

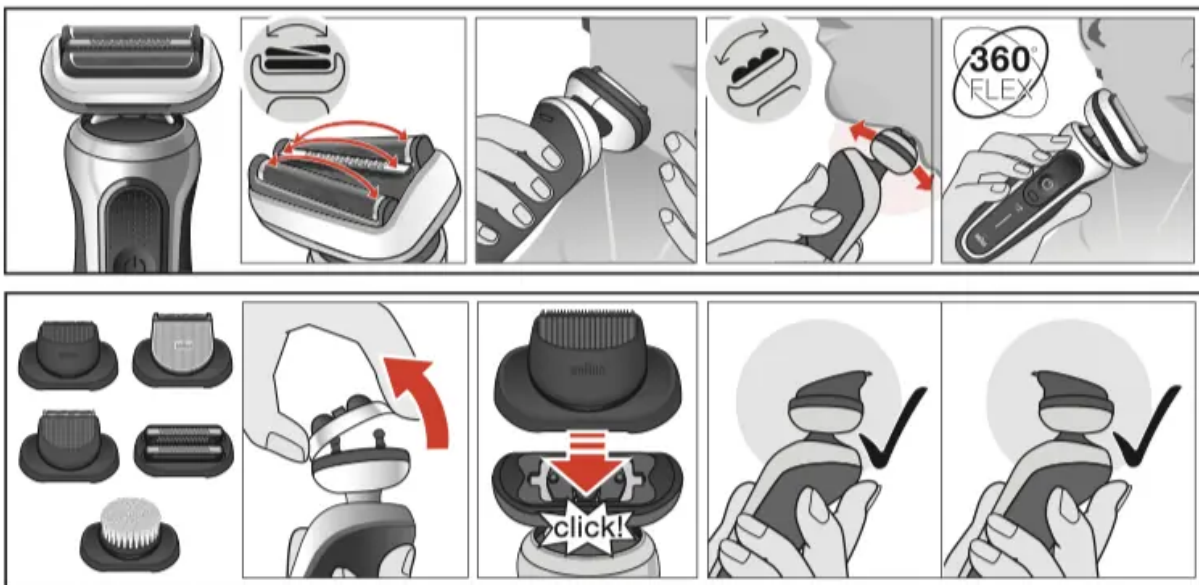
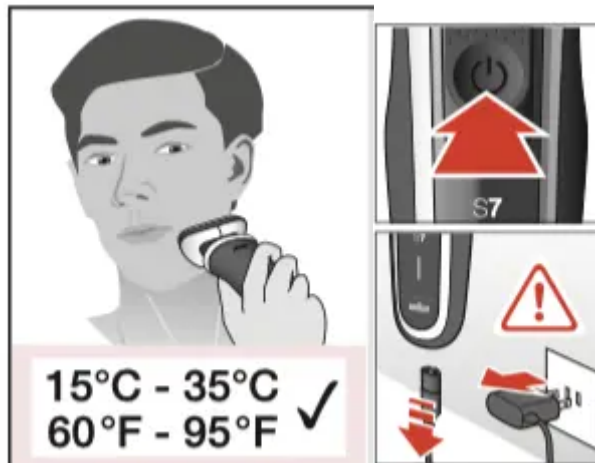


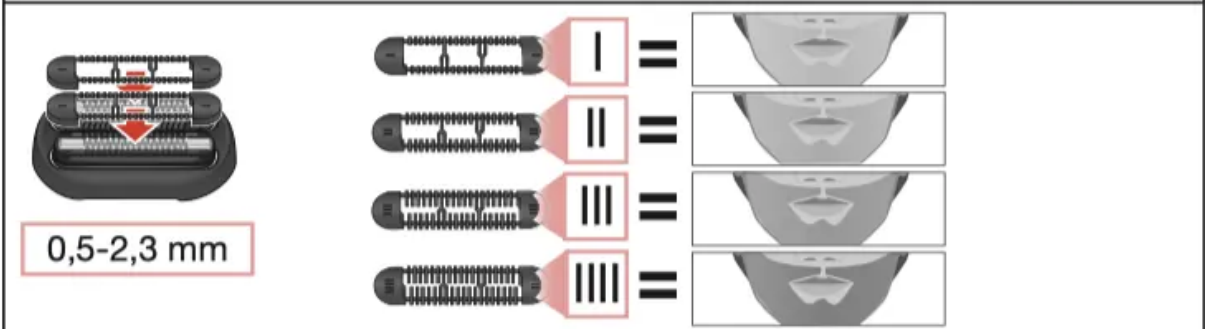
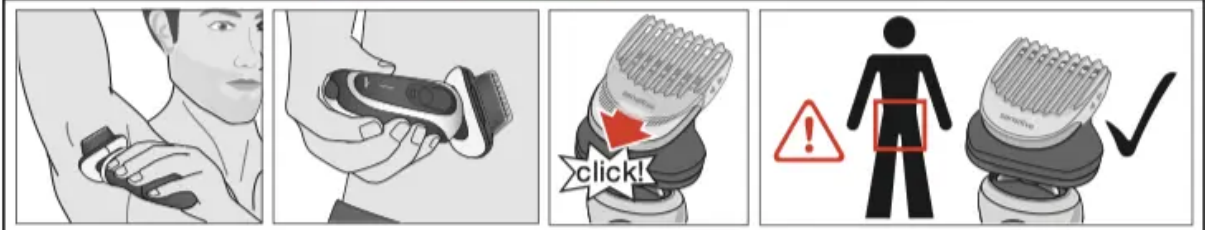
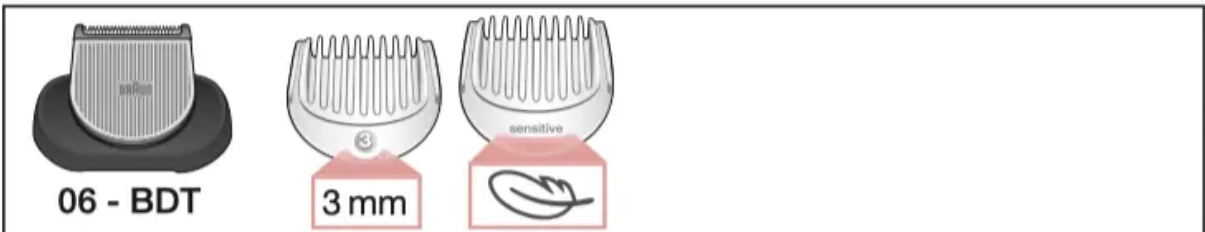


### Charging



# Usage

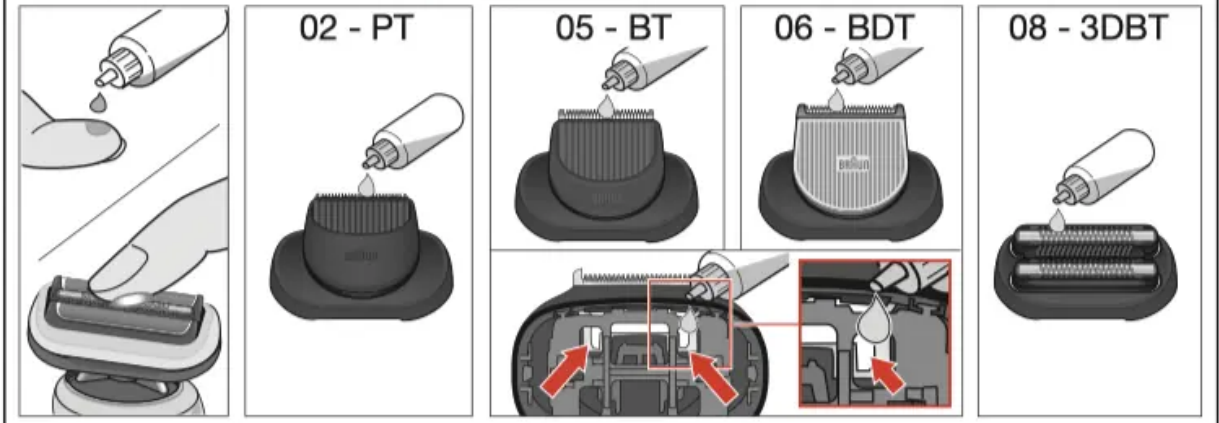
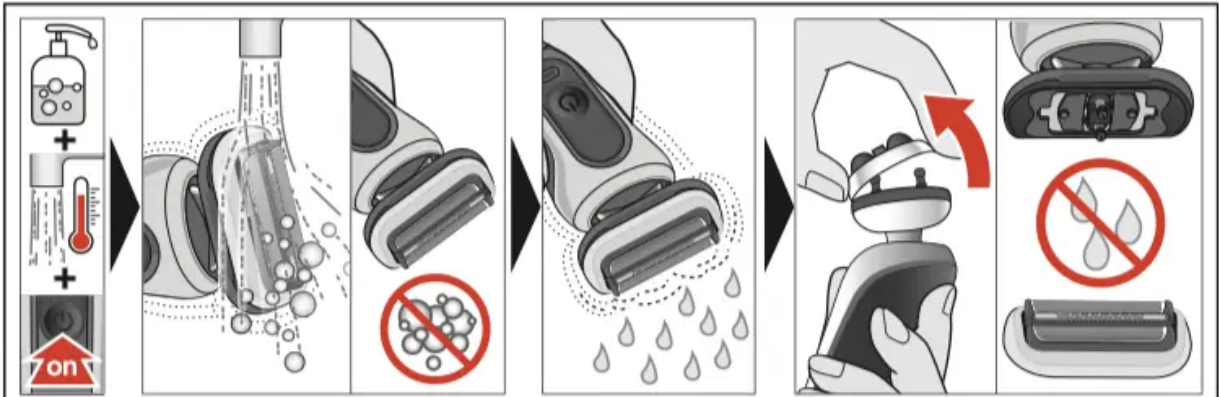
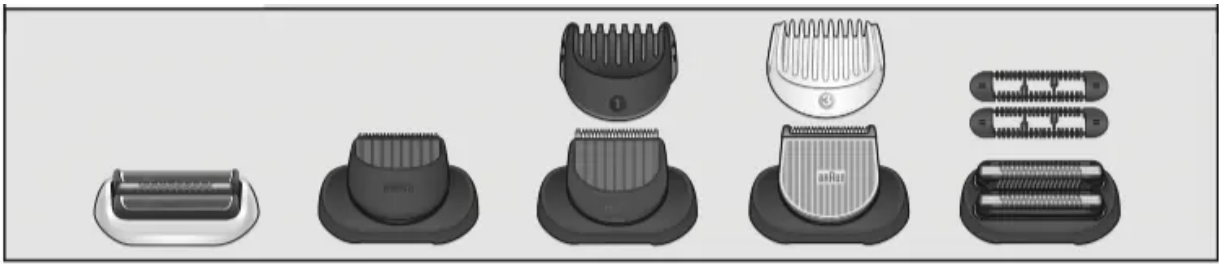






## Manual Cleaning





## Battery replacement



### How to obtain service in the USA

Should your Braun product require service, please call 1-800-BRAUN 11 (272-8611) to be referred to the Authorized Braun Service Center closest to you or visit [www.service.braun.com](http://www.service.braun.com).

*To obtain service:*

- A. Carry the product in to the Authorized Braun Service Center of your choice or,
- B. Ship the product to the Authorized Braun Service Center of your choice.

Pack the product well.

Ship the product prepaid and insured (recommended).

Include a copy of your proof of purchase to verify warranty coverage, if applicable.

To obtain original Braun replacement parts and accessories:

Contact a Braun Authorized Service Center.

Please call 1-800-BRAUN 11 (272-8611) to be referred to the Authorized Braun Service Center closest to you or visit braun.

To speak to a Braun Consumer Service Representative:

Please call 1-800-BRAUN 11 (272-8611).



Please note down the suggested replacement date (in 18 months from now) below replacement part reference number.

**73S**

<input type="text"/>	/	<input type="text"/>	/	<input type="text"/>
----------------------	---	----------------------	---	----------------------

**Warning**

This content is compiled from multiple sources and is provided for reference purposes only. It may not be complete or fully applicable to all situations. If you are unable to resolve your issue, please contact the product manufacturer or an authorized service provider for official support.

