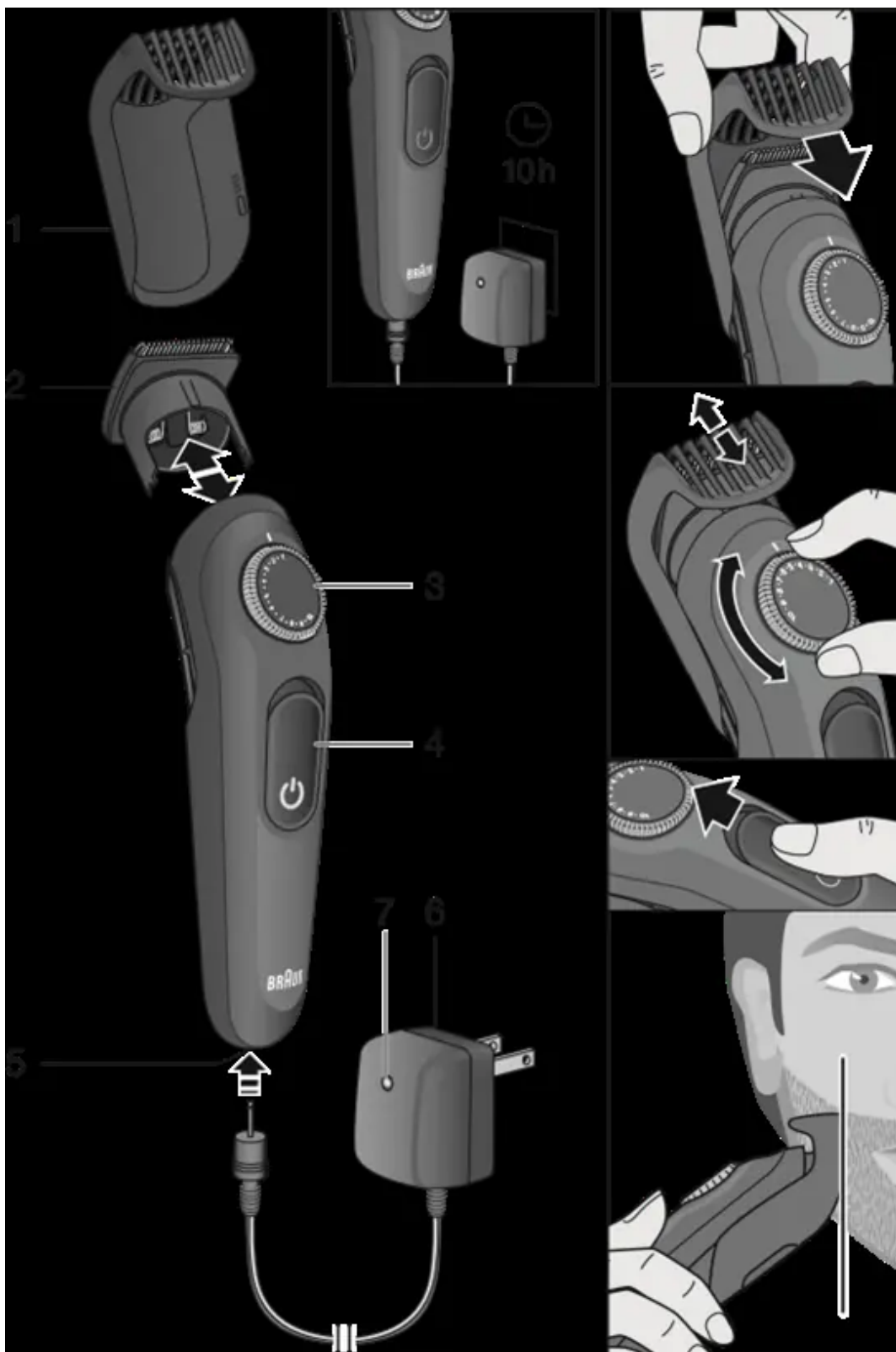
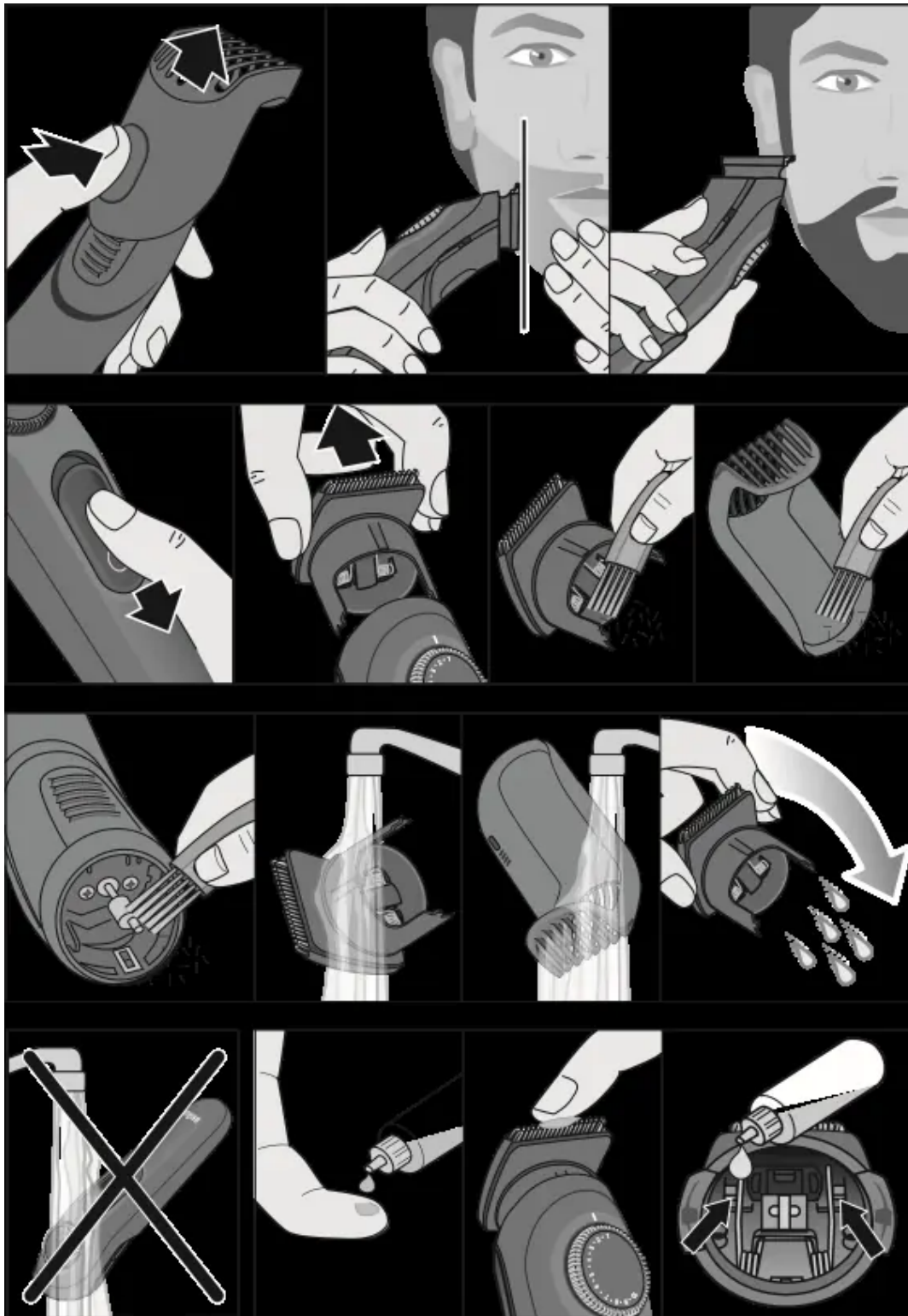


# User Manual Beard Trimmer





## Description

1. Precision comb for beard and short hair
2. Trimmer head
3. Length selector
4. On/off switch

5. Power socket
6. Special cord set
7. Charging indicator

For electric specifications, see printing on the special cord set.

## Charging

Recommended ambient temperature for charging is 41 °F to 95 °F / 5 °C to 35 °C. The battery may not charge properly or at all under extreme low or high temperatures. Recommended ambient temperature for trimming is 60 °F to 95 °F / 15 °C to 35 °C. Do not expose the appliance to temperatures higher than 122 °F / 50 °C for extended periods of time.

- Connect the appliance via the special cord set (6) to an electrical outlet. **The appliance will only charge when it is switched off.**
- A full charge takes approx. 10 hours and provides up to 40 minutes of cordless operation time.
- The charging indicator (7) in the special cord set lights up continuously when the appliance is being charged.
- Once the appliance is completely charged, discharge it through normal use. Then recharge again to full capacity.

## Trimming

- Click the precision comb (1) onto the trimmer head (2).
- Turn the length selector (3) to your desired cutting length. The comb slides automatically up or down.
- Length settings precision comb (1): 1 to 10 mm in 0,5 mm steps
- Slide the on/off switch up to turn the appliance on.
- Trim against hair growth by guiding the flat comb part over the skin.
- Avoid clogging the comb with hair. Remove and clean it from time to time.
- For shaping sideburns, moustaches and partial short beards, take off the precision comb.

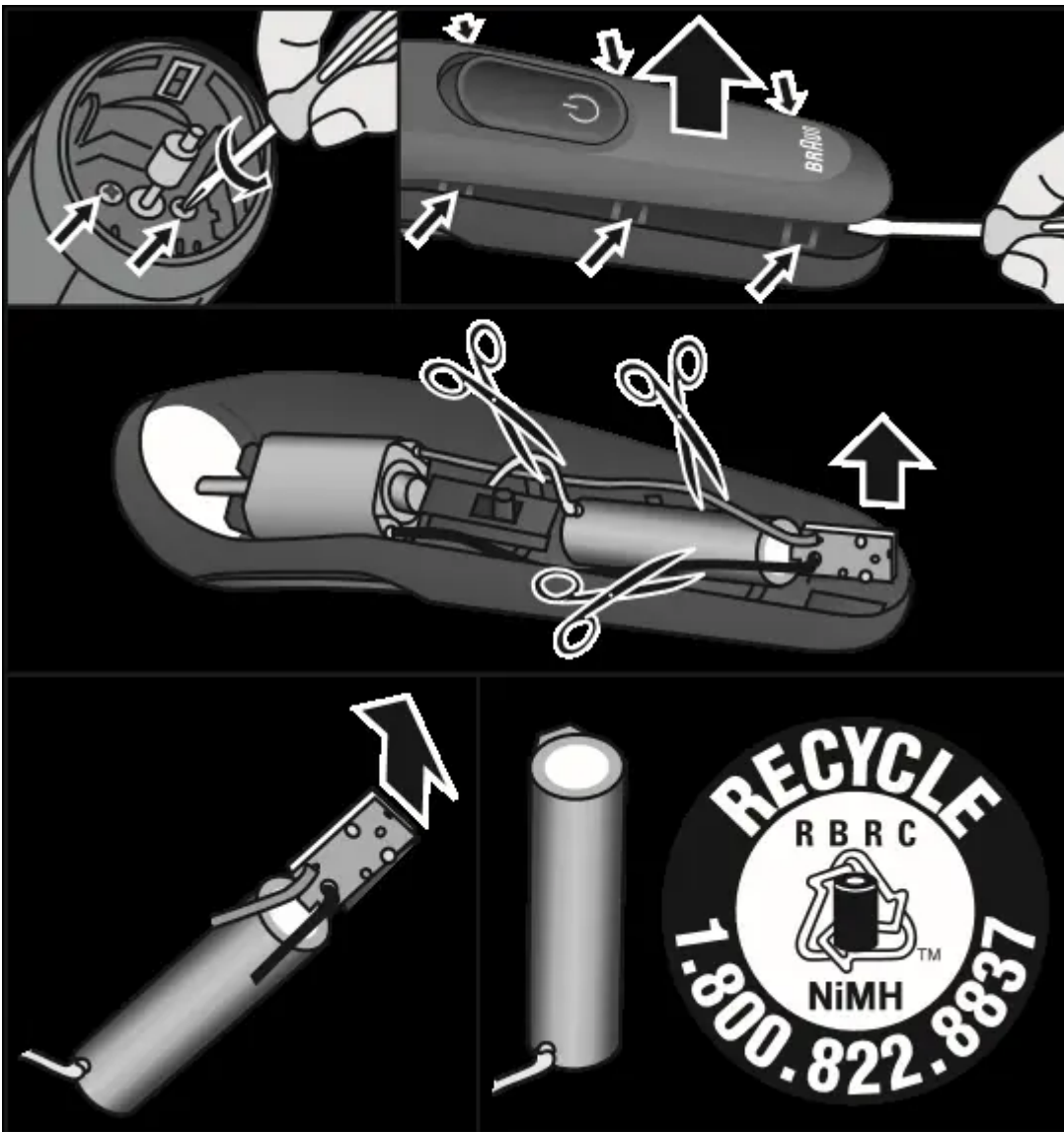
## Cleaning and maintenance

- Switch off the appliance.
- Take off the trimmer head.
- Use the brush to clean the head, comb and the appliance.

- The removed head and comb can be cleaned under running water. Let them dry completely before reattaching them.
- To keep the trimmer working properly, oil it with light machine oil (not included) regularly.

## Battery removal

This appliance contains a rechargeable battery. Before disposing of the appliance, disassemble the housing as shown, remove the rechargeable battery and recycle or dispose of properly, according to local guidelines. **Caution:** Disassembling the appliance will destroy it and invalidate the warranty.



Subject to change without notice.

## IMPORTANT SAFETY INSTRUCTIONS

When using an electrical appliance, basic precautions should always be followed, including the following:

Read all instructions before using this appliance.

### DANGER

To reduce the risk of electric shock:

1. Use only in dry condition.
2. Do not submerge in water.
3. Do not reach for an appliance that has fallen into water. Unplug immediately.
4. Do not use while bathing or in a shower.
5. Do not place, store or charge the appliance where it can fall or be pulled into a tub or sink. Do not place in or drop into water or other liquid.
6. Except when charging, always unplug this appliance from the electrical outlet immediately after using.
7. Unplug this appliance before cleaning.
8. This appliance is provided with a special cord set with integrated Safety Extra Low Voltage power supply. Do not exchange or manipulate any part of it.
9. Do not use an extension cord with this appliance.

### WARNING

To reduce the risk of burns, fire, electric shock, or injury to persons:

1. Close supervision is necessary when this appliance is used by, on, or near children or persons with disabilities.
2. Use this appliance only for its intended use as described in this manual. Do not use attachments not recommended by the manufacturer.
3. Never operate this appliance if it has a damaged cord or plug, if it is not working properly, if it has been dropped or damaged, or if the power supply has been dropped into water. Return the appliance to a service center for examination and repair.
4. Keep the cord away from heated surfaces.
5. Never drop or insert any object into any opening of this appliance.
6. Do not use outdoors or operate where aerosol (spray) products are being used or where oxygen is being administered.
7. Do not use this appliance with a damaged or broken cutter or comb, as serious skin injuries may occur.

8. Always attach plug to appliance first, then to outlet. To disconnect, turn all controls off, then remove plug from outlet.
9. When plugging to an electrical outlet outside North America, use a plug adapter to match the outlet's pin configuration.
10. The battery used in this device may present a fire or chemical burn hazard if mistreated. Do not disassemble, heat above 100 °C (212 °F) or incinerate.
11. Only use the special cord set provided with the appliance.

### **Warning**

This content is compiled from multiple sources and is provided for reference purposes only. It may not be complete or fully applicable to all situations. If you are unable to resolve your issue, please contact the product manufacturer or an authorized service provider for official support.