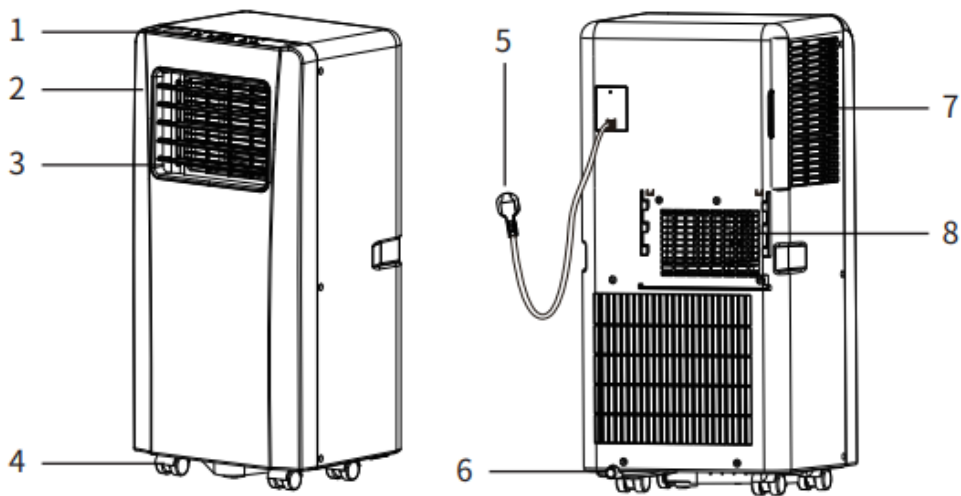


## Specification










Model Name	AAPC8RC1	AAPC10RC1
Power Supply	1PH,115V~,60Hz	1PH,115V~,60Hz
Rated Capacity	8000 Btu/h	10,000 Btu/h
SACC	5,000 Btu/h	6,000 Btu/h
Rated Input	760 W	920 W
Refrigerant	R32	R32
Noise level	≤55 dB(A)	≤56 dB(A)
Application area	up to 350 sq.ft	up to 450 sq.ft

## Name of Parts



1. Control panel	5. Power cord
2. Front cover	6. Drainage outlet
3. Louver	7. Air inlet
4. Castor	8. Air outlet

## Accessories

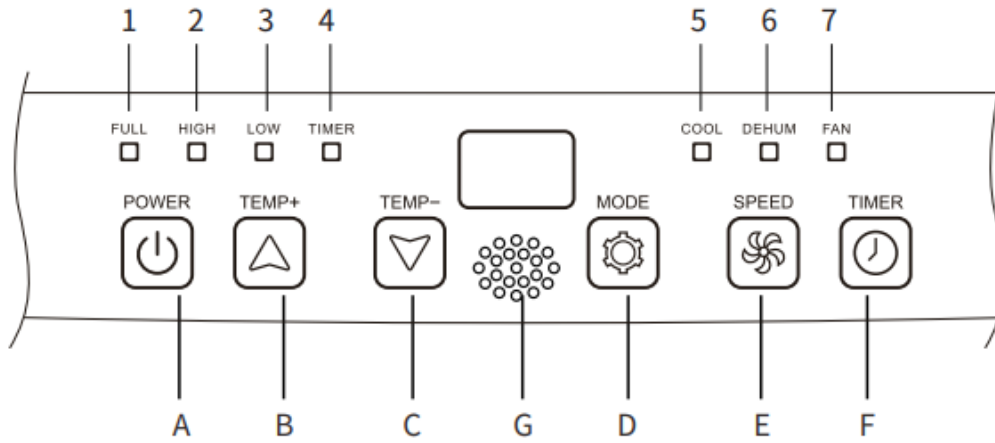
Part	Description	Quantity
	Exhaust hose	1
	Window Connector	1
	Hoseing adaptor	1
	Remote Controller	1
	Window Kit	1 (optional)
	Dowel	2 (optional)
	Air outlet	1 (optional)
	Water pipe	1 (optional)
	Batteries	2 (optional)

After unpacking, please check whether the above-mentioned accessories are included, and check their purposes in the installation introduction in this manual.

## Appearance and Function of Control Panel

Cooling only model





A. Power on/off	1. Water full
B. Temperature up	2. High fan speed
C. Temperature down	3. Low fan speed
D. Operation MODE	4. Timer on/of
E. Power on/off	5. Cooling
F. Temperature up	6. Dehumidifying
G. Signal receiver	7. Fan

### Appearance and Function of Remote Control

	<ol style="list-style-type: none"> <li>1. Power on/off</li> <li>2. Timer on/off</li> <li>3. Operation MODE</li> <li>4. Fan speed</li> <li>5. Temperature up</li> <li>6. Temperature down</li> </ol>
--	---

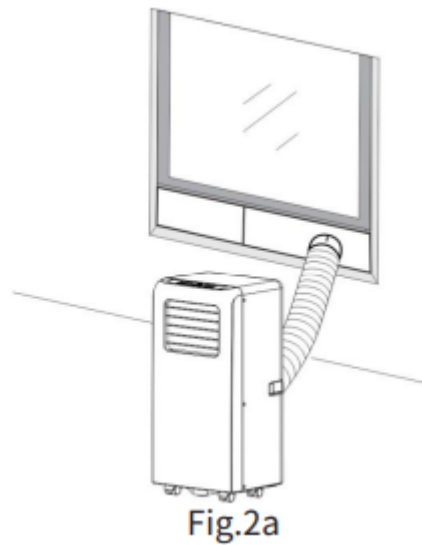
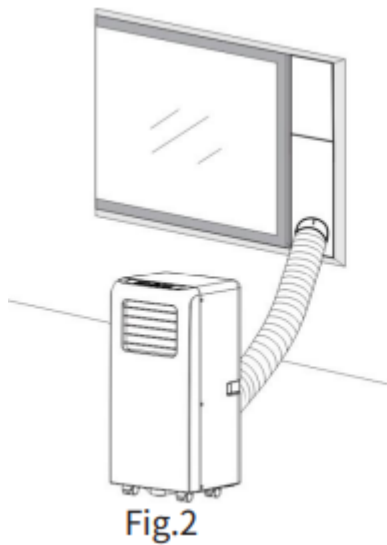
Notes:

- Do not drop the remote control.
- Do not place the remote control in a location exposed to direct sunlight.

## Operation Introduction

Before starting operations in this section:

- 1) Find a place where there is power supply nearby.
- 2) As shown in Fig.2 and Fig.2a, install the exhaust hose, and adjust the window position well.
- 3) Insert the power cord into an grounded AC115V/60Hz socket;
- 4) Press the POWER button to turn on the air-conditioner.



Before using

Notice:

-Operation temperature range:

	Maximum cooling	Minimum cooling
DB/WB(°F)	95/75	64/54

Check up whether the exhaust hose has been mounted properly. Cautions for cooling and dehumidifying operations:

- When using functions on cooling and dehumidifying, keep an interval of at least 3 minutes between each POWER.
- Power supply meets the requirements.
- The socket is for AC use. -Do not share one socket with other appliances.
- Power supply is AC115V/60Hz

## 1. Power off memory (Auto-restart operation)

- If the unit loses power unexpectedly, it will restart with the previous function settings when power is restored

## 2. Cooling operation

- Press the “Mode” button till the “Cool” icon appears.
- Press the “▲” or “▼” button to select a desired room temperature. (60°F-90°F)
- Press the “Fan Speed” button to select wind speed.

## 3. Dehumidifying operation

Press the “Mode” button till the “Dehumidify” icon appears .

- Automatically set the selected temperature to current room temperature minus 2°F.
- Automatically set the fan motor to LOW wind speed.

## 4. Fan operation

- Press the “Mode” button till the “Fan” icon appears.
- Press the “Fan Speed” button to select wind speed.

## 5. Timer operation

### ***Timer ON setting:***

- When the air-conditioner is OFF, press the “Timer” button and select a desired ON time through the temperature and time setting buttons.
- “Preset ON Time” is displayed on the operation panel.
- ON time can be regulated at any time in 0-24 hours.
- Press the “Fan Speed” button to select wind speed.

### ***Timer OFF setting***

- When the air-conditioner ON, press “Timer” button and select a desired OFF time through the temperature and time setting buttons.
- “Preset OFF Time” is displayed on the operation panel.
- OFF time can be regulated at any time in 0-24 hours.

## 6. Water drainage

### Water Full Alarm

The inner water tray inside the air-conditioner has one water level safety switches, it controls water level. When water level reaches an anticipated height, the water full indicator lamp lights up. (If water splash motor is damaged, when the water is full, please remove the rubber blockage at the bottom of unit, and all water will drain outside.)

## Continuous Drainage

- When you plan to leave this unit unused for a long time, please remove the rubber blockage from the drainage hole at the bottom of unit, and connect a drain hose to the lower fixing clip. All the water in the water tray will drain outside.
- You can drain the water as the above when the unit working at the HEAT mode.
- If water splash motor is damaged, continuous drainage can be used, and under this condition, the water splash motor is not activated. The unit can also work well.
- If water splash motor is damaged, intermittent drainage can also be used. Under this condition, when the water full indicator lamp lights up, please connect a drain hose to the lower fixing clip, then all the water in the water tray will be drained outside. The unit can also work well.

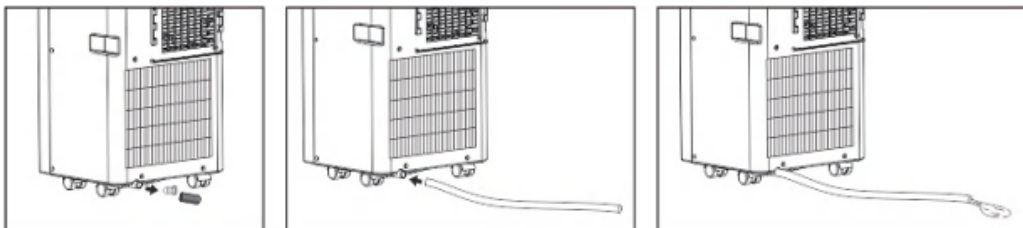


Fig.2

## Installation Explanations

### Installation Explanations:

- A removal air-conditioner shall be installed in the flat and empty place all around. Don't block the air outlet, and the required distance around should be at least 30cm. (See Fig.3)
- Should not be installed in wet location, such as the laundry room.
- Socket wiring should be in accordance with the local electric safety requirements .

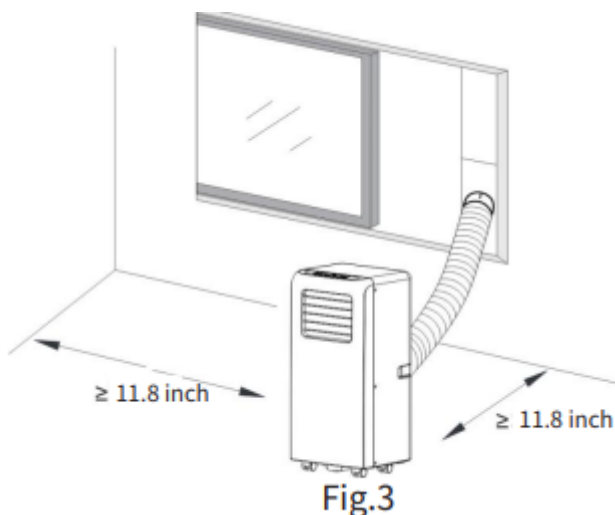
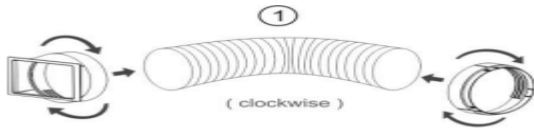


Fig.3

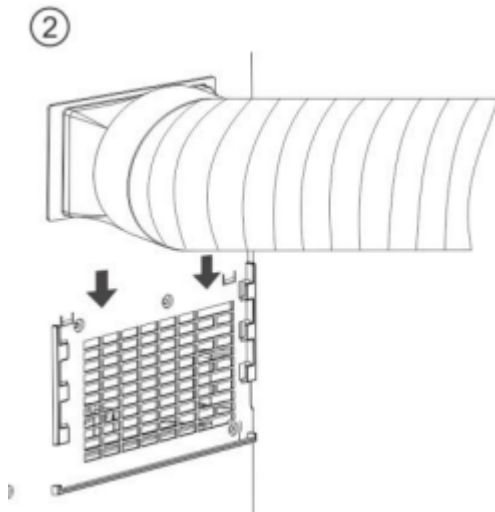
## Introduction to Exhaust Hose Installation

### A) Temporary installation

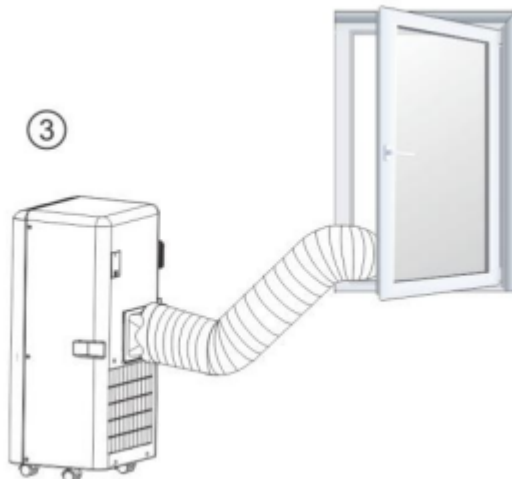
1. Twist both ends of the exhaust hose into the Hose Connector.



2. Insert the fixing clip of the housing adaptor into the openings at back of the air conditioner



3. Put the other end of the exhaust hose to the near windowsill.



### B) Window Slider Kit Installation

The installation manner of window slider kit is mostly in “horizontal” or “vertical”. As shown Fig.5 and Fig.5a, check the min. and max. size of the window before the installation.

1. Install the window kit on the window;

2. Adjust the length of the window slider kit according to the window width or height, and fix it with the dowel;
3. Insert the window connector hose to the hole of the window kit(Fig.5b).

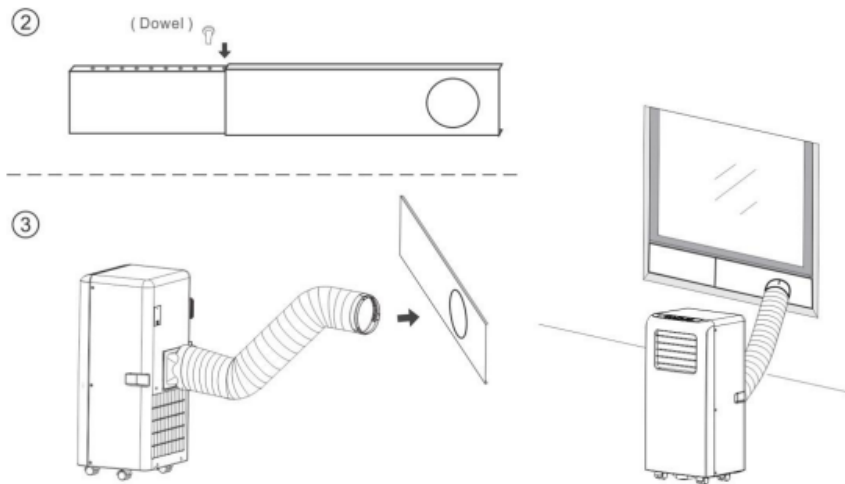
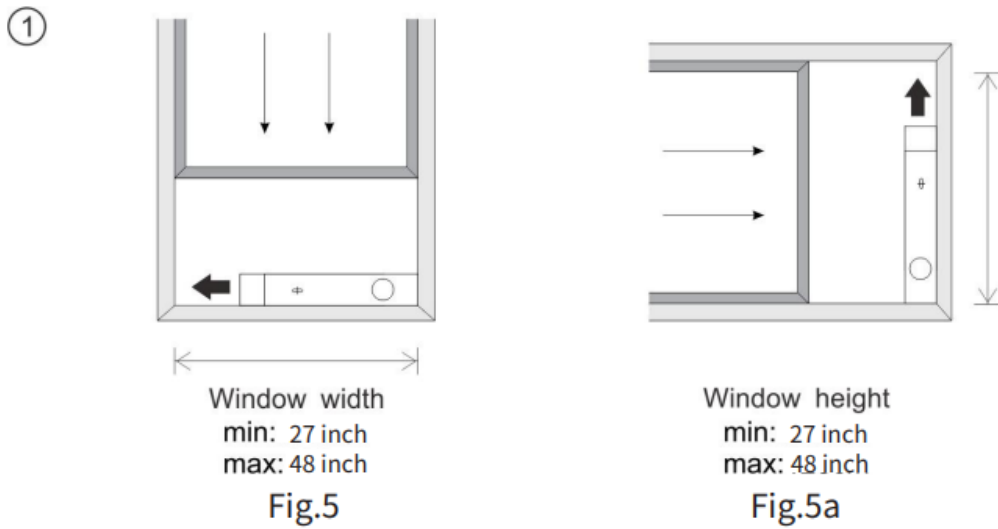


Fig.5b

## Maintenance Explanations

### Water Full Alarm Function

The inner water tray in the air-conditioner has one water level safety switches, it controls water level. When water level reaches an anticipated height, the water full indicator lamp lights up. (If water splash motor is damaged, when the water is full, please remove the rubber blockage at the bottom of unit, and all water will drain outside.)

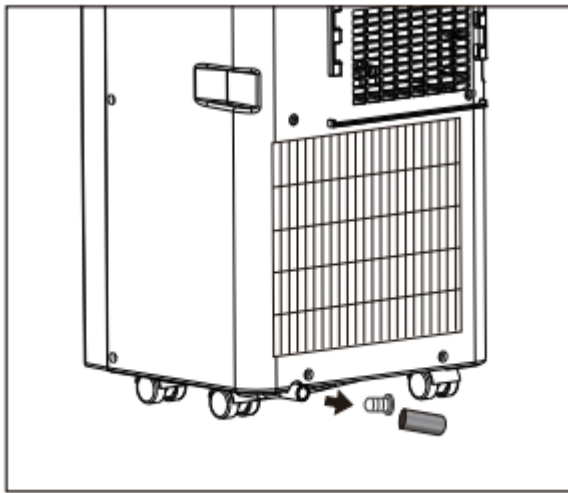
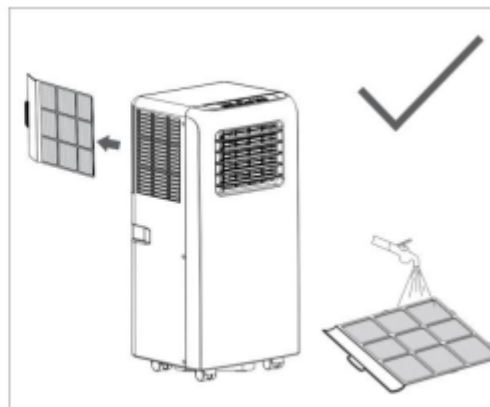
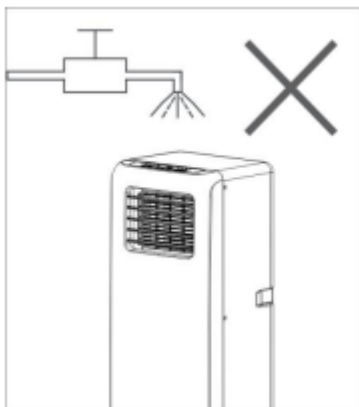


Fig.6

## Maintenance Explanations

### Declaration:

- 1) Before cleaning, be sure to disconnect the unit from any electric supply outlet;
- 2) Do not use gasoline or other chemicals to clean the unit;
- 3) Do not wash the unit directly;
- 4) If the conditioner is damaged, please contact the dealer or repair shop.



### 1. Air Filter

- If the air filter becomes clogged with dust/dirt, the air filter should be cleaned once every two weeks.
- Dismounting
  - Open the air inlet grille and take off air filter.
- Cleaning

Clean the air filter with neutral detergent in lukewarm (104°F) and dry it up in the shade. Maintenance Explanations

- Mounting

Putting the air filter into the inlet grille, replace the components as they were.

### **Clean the Air-conditioner Surface**

First clean the surface with a neutral detergent and wet cloth, and then wipe it with a dry cloth.

# Troubleshooting



<b>Troubles</b>	<b>Possible Causes</b>	<b>Suggested Remedies</b>
<b>1. Unit does not start when pressing on/off button</b>	- Water full indicator lamp blinks, and water tank is full.	Dump the water out of the water tank.
	- Room temperature is higher than the setting temperature. (Electric heating mode)	Reset the temperature
	- Room temperature is lower than the setting temperature. (Cooling mode)	Reset the temperature
<b>2. Not cool enough</b>	- The doors or windows are not closed.	Make sure all the windows and doors are closed.
	- There are heat sources inside the room.	Remove the heat sources if possible
	- Exhaust air hose is not connected or blocked.	Connect or clean the exhaust air hose.
	- Temperature setting is too high.	Reset the temperature
	- Air inlet is blocked.	Clean the air inlet.
<b>3. Noisy</b>	- The ground is not level or not flat enough	Place the unit on a flat, level ground if possible
	- The sound comes from the flowing of the refrigerant inside the air conditioner	It is normal.
<b>4. E0 Code</b>	Room temperature sensor failed	Go to service center
<b>5. E2 Code</b>	Water tray full when cooling	Take off rubber stopper and empty the water.
<b>6. E3 Code</b>	Evaporator temperature sensor failed	Go to service center
<b>7. E3 Code</b>	Evaporator temperature sensor failed	Replace evaporator temperature sensor

<b>8. E4 Code</b>	Water tray full when heating	Please empty the water tray.
-------------------	------------------------------	------------------------------

Note: The real products may look different.

**Warning**

This content is compiled from multiple sources and is provided for reference purposes only. It may not be complete or fully applicable to all situations. If you are unable to resolve your issue, please contact the product manufacturer or an authorized service provider for official support.

---

Document generated by [ManualsFile](#)

