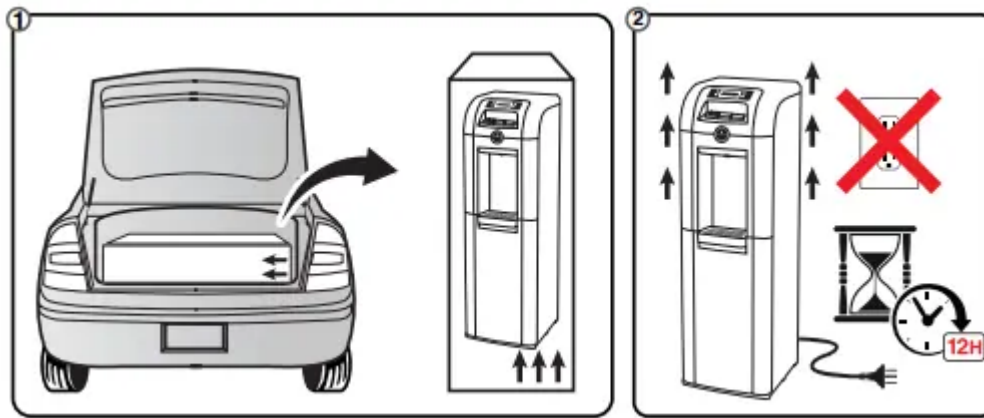
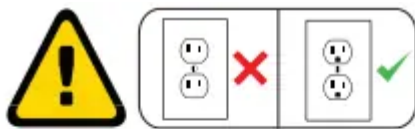


## Pre-Operation



## GROUNDING PRECAUTIONS



## SPECIFICATIONS



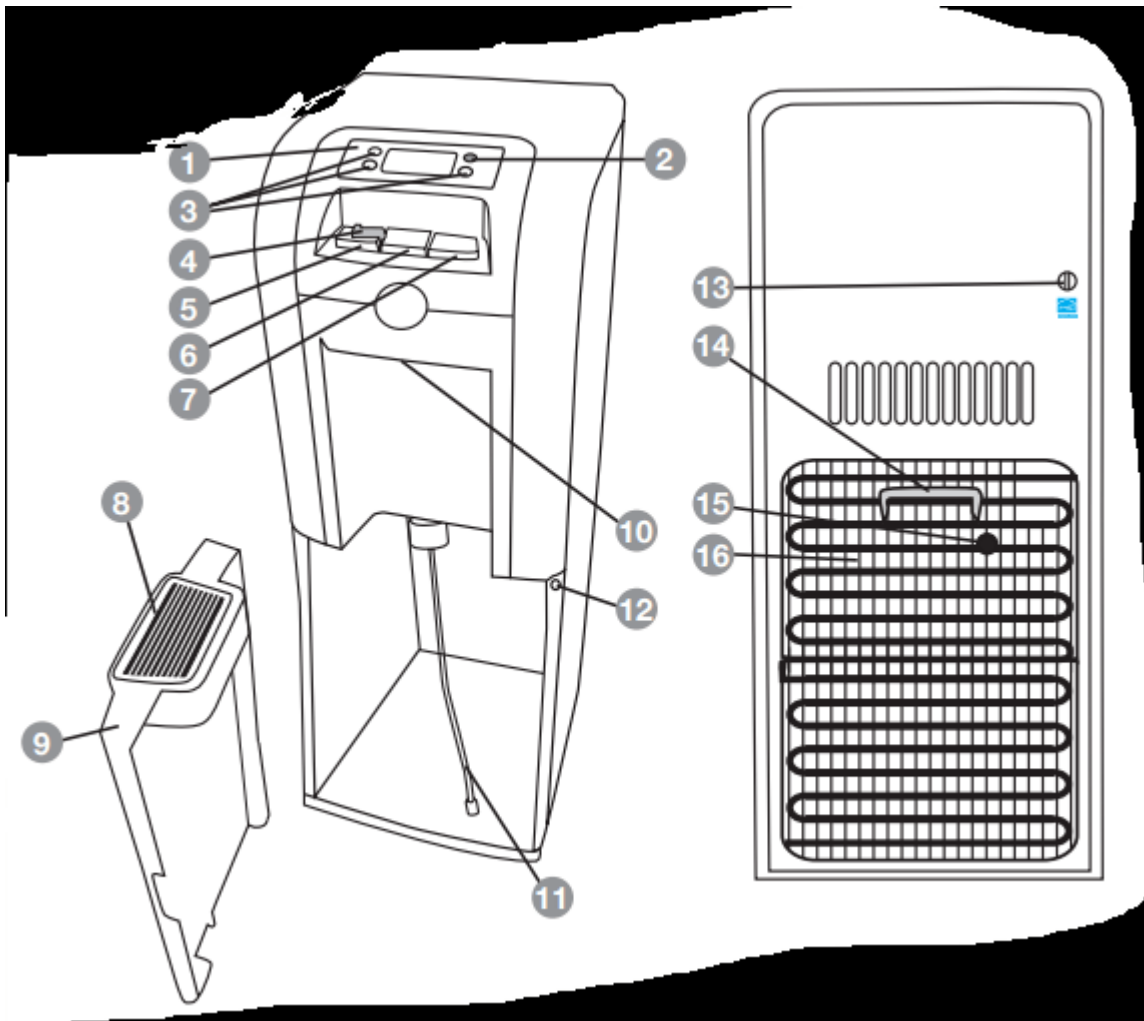
<b>Model No.</b>	VWD1077BLP	
<b>Dimensions W x D x H</b>	13.5 in. x 12.5 in. x 40.7 in. • 34.2cm x 31.8cm x 103.4cm	
<b>Net Weight / Gross Weight</b>	36.4 lbs / 16.5 kg • 45.1 lbs / 20.5 kg	
<b>Heating Temp (approx.).</b>	201 °F / 94 °C	
<b>Cooling Temp (approx.).</b>	39 °F / 4 °C (Based on cold water thermostat setting on "Max")	
	<b>HOT</b>	<b>COLD</b>
<b>Power Consumption</b>	450W	85W

## PACKAGE CONTENTS

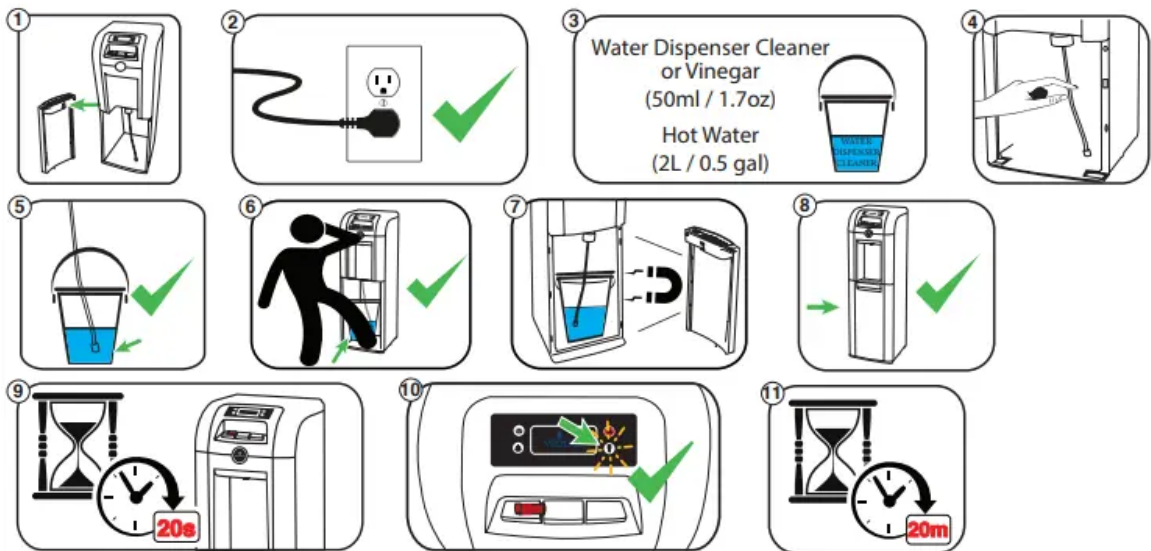
1. Control panel
2. Hot Water (on/off) activation button
3. Ready-to-dispense indicator lights
4. Child resistant safety switch
5. Hot water dispensing button
6. Room temperature water dispensing button
7. Cold water dispensing button
8. Removable drip tray
9. Detachable Lower Front Panel (bottle storage compartment)

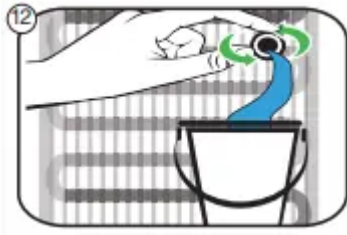
IMPORTANT: The lower front panel must always be installed/positioned on the unit for proper operation.

10. Water dispensing spigot
11. Water Bottle Straw
12. Door Switch (Controls water pump operation)
13. Adjustable "cold" water thermostat.  
(Note: hot water temperature is factory set and cannot be adjusted)
14. Carry handle
15. Drain valve
16. Condenser coil



**INITIAL PRODUCT CLEANING PROCEDURE**

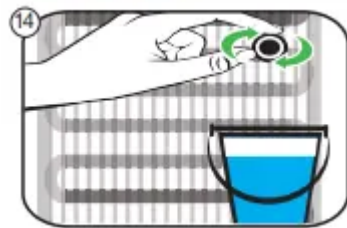




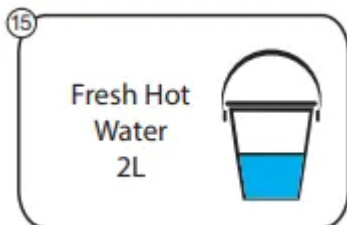
Remove drain cap at the back of the unit.



Wait until water stops flowing.



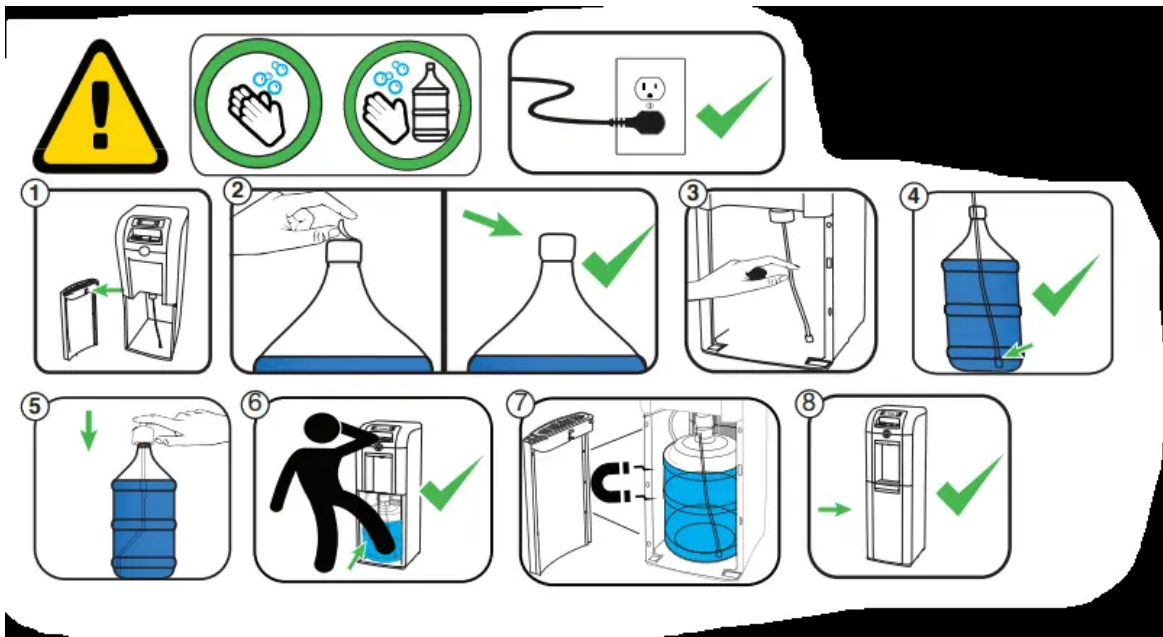
Re-install drain cap and discard cleaning solution



Flush with fresh hot water



## INSTALLING THE WATER BOTTLE



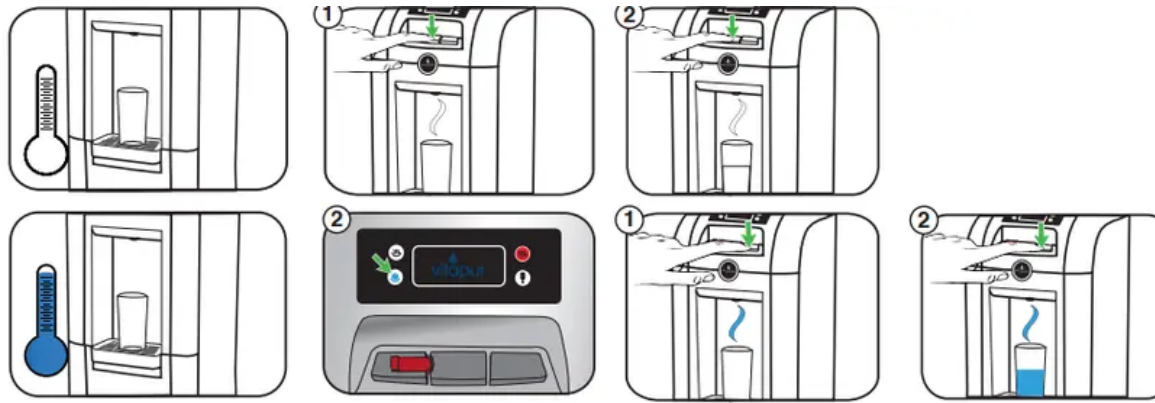
Note: Adjust the length of the water bottle straw to fit your water bottle capacity of choice.

## Control Panel Functions



1	COLD WATER ACTIVATION BUTTON	Press the cold water button until the desired amount of water is delivered and release.
2	ROOM TEMPERATURE WATER ACTIVATION BUTTON	Press the room temperature water button until the desired amount of water is delivered and release.
3	CHILD SAFETY LOCK (HOT WATER)	The child safety lock must be disengaged to activate hot water, (slide the red lever to the left) and re-locks automatically when released.
4	HOT WATER ACTIVATION BUTTON	Slide child safety lock to the left and push the hot water button until the desired amount of water is delivered and release.
5	HOT WATER "ON/ OFF" SWITCH	Press the hot water switch to activate/deactivate the hot water heating function (Note: the hot water heating system operates/ cycles 24/7 until such time the hot water switch is turned off).
6	EMPTY WATER BOTTLE WARNING	"Flashing" (yellow) = water bottle empty (replace) "Off" = water levels satisfactory
7	HOT WATER INDICATOR LIGHT	"Flashing" (red) = hot water heating cycle operational "Solid" (red) = hot water heating cycle has reached optimum temperature "Off" = hot water heating system is off
8	COLD WATER INDICATOR LIGHT	"Off" = cold water cooling cycle operational (compressor on) "Solid" (blue) = cold water has reach optimum temperature (compressor off)

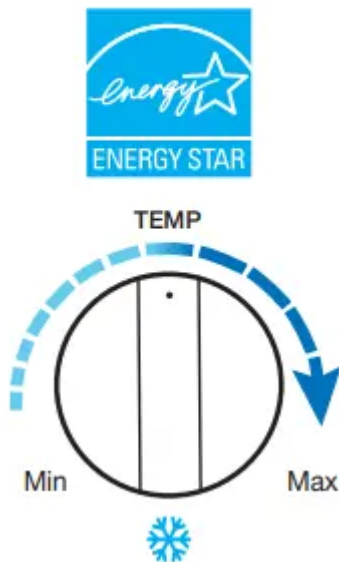
## 1. DISPENSING ROOM AND COLD WATE



## 2. ADJUSTING THE TEMPERATURE (COLD WATER ONLY)

NOTICE: This model Water Dispenser left the factory with the cold water temperature control factory “default setting” positioned for “Energy Star” compliance (identified to the side). This setting will deliver cold water temperatures between 8°C ~ 10°C (46.4°F ~ 50°F) The cold water temperature can be adjusted, (using a flat screwdriver) by rotating the adjustment screw clockwise or anti-clockwise between “Min” (cool) and “Max” (colder) until the desired temperature is reached. NOTE: Any change/adjustment to the cold water temperature control may effect Energy Star efficiency.

### ENERGY STAR FACTORY DEFAULT SETTING

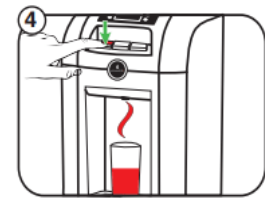
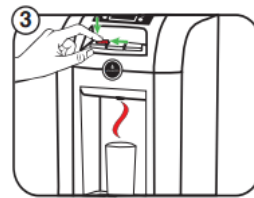
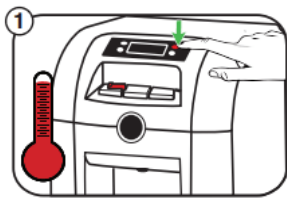


## 3. DISPENSING HOT WATER

NOTE: The lower front panel must be installed otherwise hot water heating is not possible.

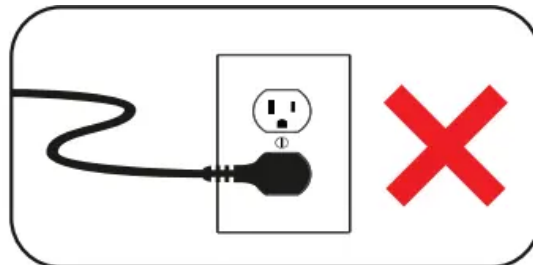


Important: Your Vitapur® water dispenser is designed with a special safety feature (low water level sensor) that controls activation/operation of the hot water tank heating system. If no water is present and/or low water levels are detected inside the internal water reservoir, activation/operation of the hot water heating system is not possible. Likewise, if the hot water heating system is operational and water is being drawn simultaneously causing internal water levels to drop below the established minimum level set point, hot water tank operation is automatically suspended. To reactivate the hot water heating system, you must replenish your water supply and activate the heating function. Operation of the cold water system is not affected by this safety feature.

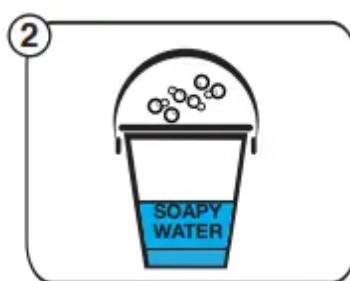
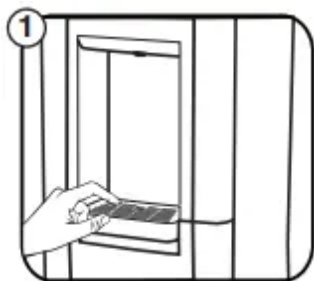


## Care and Cleaning

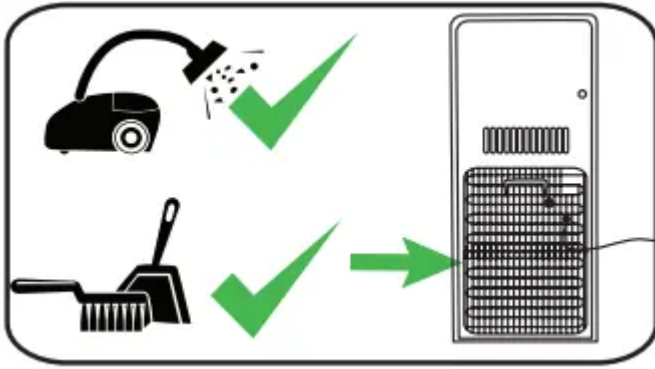
### CLEANING THE OUTSIDE OF THE WATER DISPENSER



### CLEANING THE DRIP TRAY



### CLEANING THE CONDENSER



## DRAINING THE RESERVOIRS

Caution: Water May Still Be Hot.



## Going Away On Vacation

When not using the dispenser for long periods of time or when going on vacation, conserve energy, unplug the dispenser and drain the reservoirs (see Draining the Reservoirs). Follow Initial Product Cleaning Procedures upon return and startup of the dispenser.

## DRINKING STRAW INSTRUCTIONS



**3 Gal.**  
**(11,3L)**



**4 Gal.**  
**(15,1L)**



**5 Gal.**  
**(19L)**

# Troubleshooting



<b>Problem</b>	<b>Possible Cause</b>	<b>Suggested Solution</b>
Water dispenser is leaking	Drain cap and silicone seal are not secure.	Ensure seal is secure in drain plug and tighten drain cap.
Water is not hot or cold enough	All the water in the tank has been used.	Replace with full bottle and wait for water to cool and heat.
	The unit is unplugged.	Plug it into the outlet.
	Hot water power switch not activated.	Activate red "on/off" switch
	The circuit breaker in your home is tripped or the fuse has blown	Reset the breaker or replace the fuse.
	Temperature limit tripped.	Allow the temperature of the hot water tank to cool for approximately 15-30 minutes. The temperature limit switch will re-set automatically.
	Lower front panel is not installed.	The lower front panel must always be installed/positioned on the unit for proper operation.
	Cold water control needs to be adjusted.	Adjust control between high (cool) and low (colder) levels to achieve desired temperature
Water dispenser is not dispensing water	Empty water bottle	Replace with full bottle
	Mineral deposits clogging tanks	See Cleaning the Reservoirs
	Possible air pocket.	Push down the dispenser buttons to prime the unit.
Water dispenser is noisy	Water pump makes noise as it fills the tank.	This is normal.
	Water dispenser is uneven.	Make sure the dispenser is on an even surface that can support its full weight

## Warranty

Do not return this product to the store: Please contact Customer Service at 1-877-447-4768.

The supplier warrants your water dispenser to be free from manufacturing defects in workmanship or material under normal operating conditions for one (1) year from the original date of purchase. This warranty applies only in the country in which it is sold and is available to the original purchaser only. This warranty is non transferable.

This warranty and the CSA International listing for this water dispenser are void if the water dispenser is altered, modified, or combined with any other machine or device. Alteration of this water dispenser may cause serious flooding and/or hazardous electrical shock or fire.

The provisions of this warranty shall not apply to:

- Water bottles
- Service trips to your home to teach you how to use the product
- Improper installation, delivery, or maintenance (Failure to maintain the product according to the instructions outlined in the product manual will automatically void the warranty.)
- Failure of the product due to abuse, misuse, alteration, commercial use, or any use for which the product was not intended
- Products that are used outside a residential or office environment
- Replacement of house fuses or resetting of circuit breakers
- Use of this product where water is microbiologically unsafe or of unknown quality
- Damage to the product if used to dispense anything other than water
- Damage to the product caused by accident, fire, floods, or acts of God
- Any service to the product by unauthorized personnel
- Incidental or consequential damage caused by possible defects with this appliance, its installation or repair

This warranty shall be fulfilled at an authorized repair facility. All warranty repairs must be pre-authorized by the supplier. The supplier will, at its option, repair or replace free of charge any defective part, where the purchaser has notified their retailer within the warranty period. The obligation of the supplier under this warranty is expressly limited to such repairs or replacement. This warranty does not cover the freight costs to and from the authorized repair facility.

Except as set forth herein or required by law, the manufacturer makes no other warranty, guarantee, or agreement, express, implied, or statutory, including any implied warranty of merchantability or fitness for a particular purpose.

The manufacturer does not assume or authorize any person to assume any obligations of liability in connection with this water dispenser. In no event will the manufacturer be liable for indirect,

special, or consequential damages (including, without limitation, economic loss) or for any delay in the performance of this agreement due to causes beyond its control.

Some states or provinces do not allow limitations on how long an implied warranty lasts, so the above limitation may not apply to you. Some states or provinces do not allow the exclusion or limitation of incidental or consequential damages, so the above limitation or exclusion may not apply to you. This warranty gives you specific legal rights, and you may also have other rights which vary from state to state or from province to province.

If you require service, please first see the “Troubleshooting” section of this manual. Additional assistance can be found by calling our customer service line at 1-877-447-4768, Monday to Friday from 8 a.m. to 5 p.m. (CST)

Keep this manual and your sales slip together for future reference. You must provide proof of purchase for in-warranty service.

Write down the complete model number and serial number of your water dispenser to better help you obtain assistance or service if you ever need it. You can find this information on the back of the water dispenser

#### **Warning**

This content is compiled from multiple sources and is provided for reference purposes only. It may not be complete or fully applicable to all situations. If you are unable to resolve your issue, please contact the product manufacturer or an authorized service provider for official support.