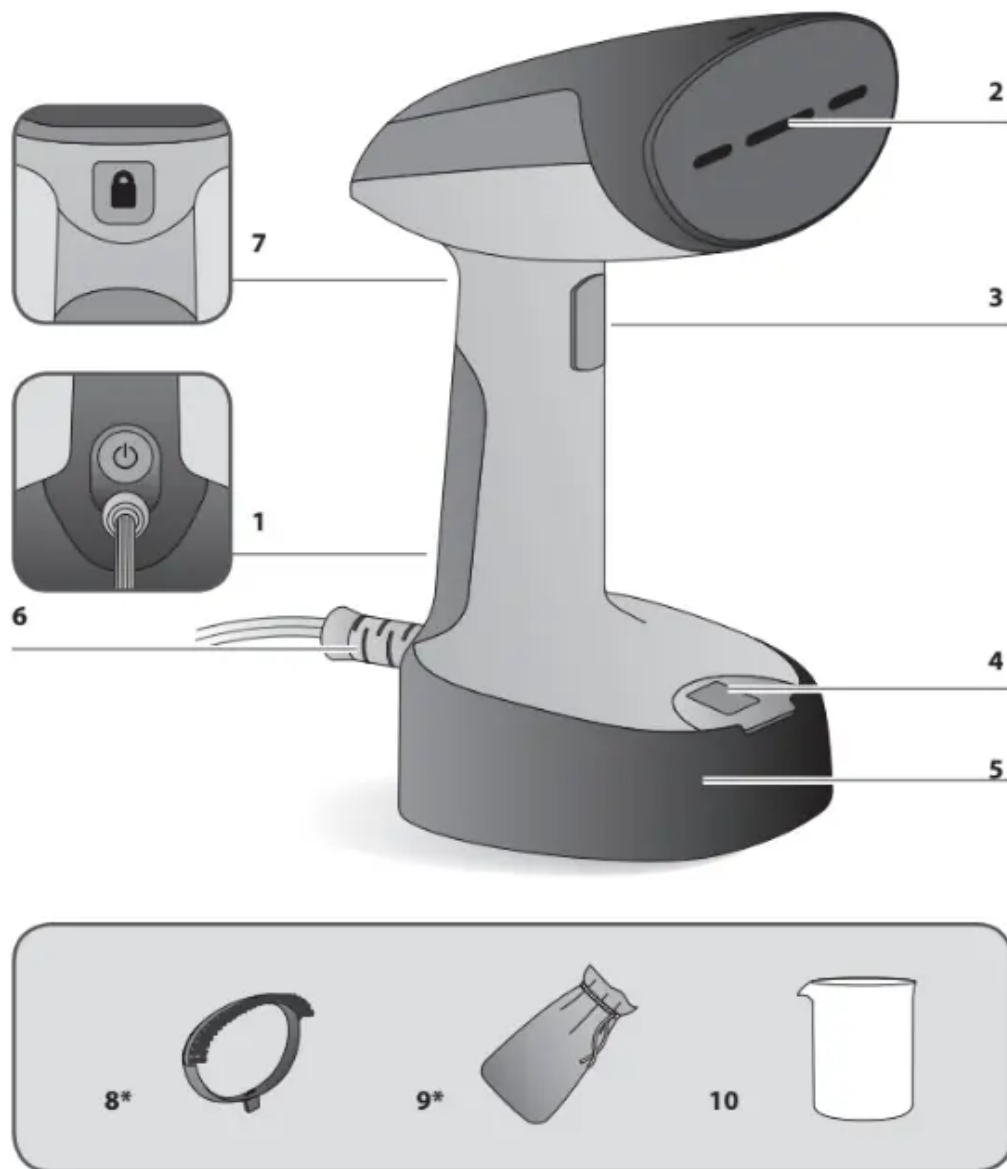


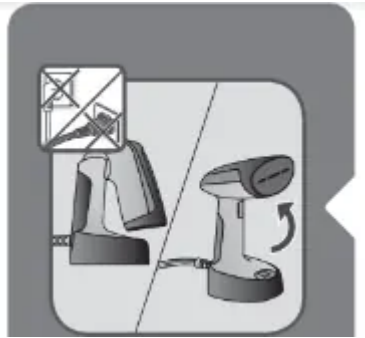
PRODUCT DESCRIPTION



1. ON/OFF button + light indicator
2. Steam head
3. Steam button
4. Water tank inlet cap
5. Water tank
6. Cord exit
7. Head unlocking button

- 8. Fabric brush
- 9. Travel pouch
- 10. Beaker 60ml

1. BEFORE USE



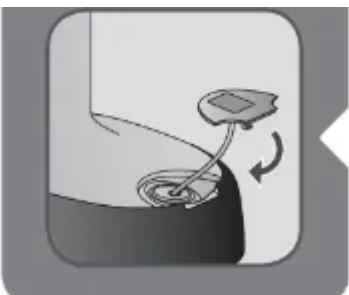
Always unfold the steam head until it is locked before any use of the appliance.



Open the water inlet cap and fill the beaker with water up to the maximum limit.



Fill the water tank with a maximum of 120 ml (beakers of 60ml) of untreated tap water. See section «what water to use»).

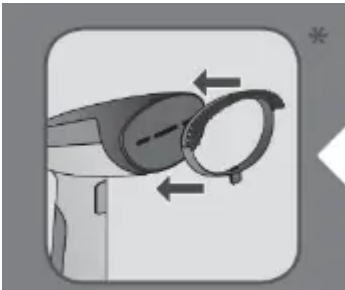


Close the water inlet cap.



As steam is very hot: never attempt to remove creases from a garment while it is being worn, always hang garments on a clothes hanger.

2. ACCESSORIES



The fabric brush opens the weaves of the fabrics for better steam penetration. Before removing or attaching the steam brush, unplug your appliance and allow it to cool down, for one hour.

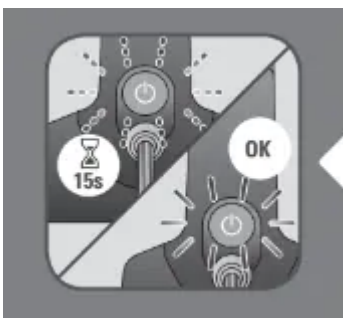


The travel pouch is used to store your appliance or to travel with. Before using the travel pouch, unplug your appliance and allow it to cool down for one hour. Then empty the water tank before storing it.

3. USE



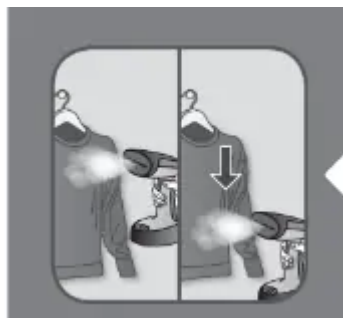
Plug-in the appliance. Switch on the appliance.



Wait until the light stops flashing approximately 15 seconds). When the light is steady the appliance is ready to use.

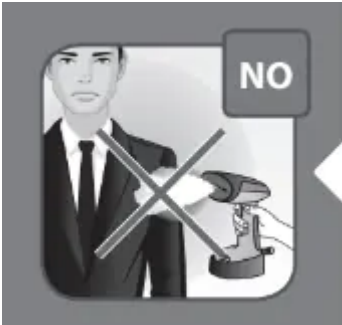


Press the steam button with the steam head facing away from you holding it in a vertical position.

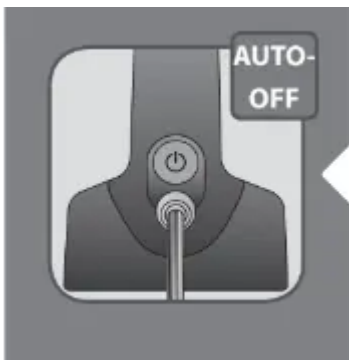


For optimal use, pass the steam jets over your garment from top to bottom.

Tips: Check the fabric's label for recommendations. We recommended that you test acrylic, nylon or other synthetic fabrics in an inconspicuous area to ensure these fabrics are not damaged by hot steam.

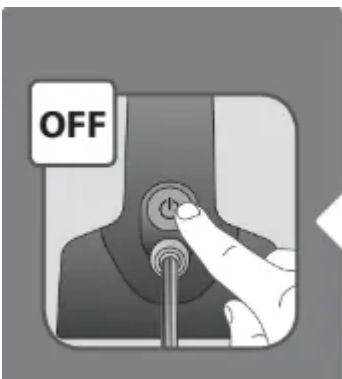


Warning : Never steam a garment while it is being worn.

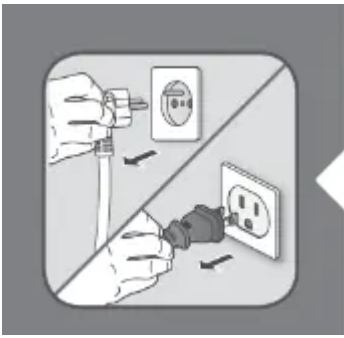


Your appliance has an auto-off function that will switch it off after approximately 5 mins of non-usage. To re-start the appliance, please refer to «3. USE» section.

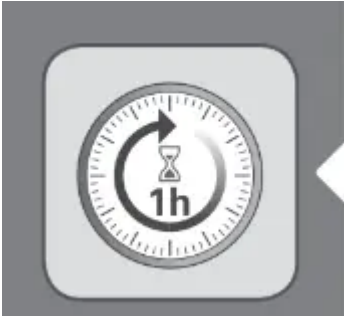
4. AFTER USE



Press and hold the On/Off button for seconds to switch the appliance off.



Unplug the appliance.



Wait for an hour for your appliance to cool before storing.



Empty the water tank completely and then close the water inlet cap.



For storage purposes or to place in the travel pouch, it is possible to fold the appliance. Always press the head unlocking button before folding the head.

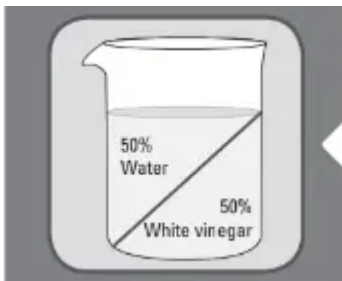


Do not wind the powercord tightly around the appliance. Wind it up separately.

5. ANTI CALC



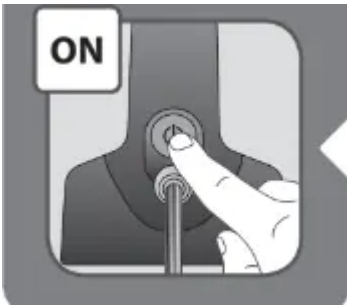
If you notice a decrease in the performance of your appliance, it may need descaling. Do this process in a well ventilated room.



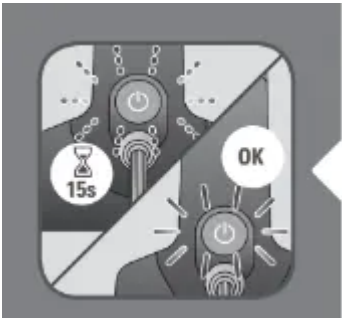
Fill the beaker with 50% untreated tap water and 50% white vinegar and pour into the water tank of the appliance.



Plug-in the appliance.



Switch on the appliance.



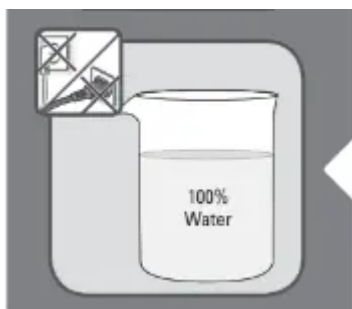
Wait until the light stops flashing approximately 15 seconds).



When the light is steady, release steam by pressing continuously on the steam button away from any garments.



Allow the appliance to run until the water tank is completely emptied.



Open the water tank inlet cap to fill it 100% with untreated tap water at maximum level and repeat the previous operation until the water tank is completely empty in order to rinse your appliance.

6. CLEANING



Wait an hour for the appliance to completely cool down.



Clean the plastic parts of the appliance with a dry cloth.



Never wash or rinse appliance directly over a sink.

TROUBLESHOOTING

There is no steam.

- The appliance is not plugged in, or not switched on. - Check that your appliance is correctly plugged in and switched on. Then wait approximately 15 sec for steam to be available.
- The water level is too low - Unplug your appliance and refill it.

- The steam pump has not been primed. - Press the steam trigger continuously for a few seconds to begin steaming.
- You are using the appliance for the first time. - Press the steam trigger continuously for a few seconds to begin steaming.
- Steam trigger cannot be pressed. - Completely unfold the steam head until locked to allow the steam trigger to be pressed.

The appliance is not heated.

- Your appliance is not plugged-in or switched-on or the auto-off has switched off the appliance. - Plug in your appliance and switch on.

Water tank leaks.

- The water tank inlet cap is not closed properly. - Ensure the inlet cap is fully closed.

Steam rate decreases or rejects particles.

- Appliance needs descaling - Refer to 'ANTI CALC' section in instructions for use.

The steam leaves stains on the fabric or the appliance spits

- You are using water with additives - Never add any additive in the water tank.
- The appliance has not been rinsed enough after the descaling operation. - Read carefully the 'ANTI CALC' section in instructions for use.
- You are using other liquids than white vinegar to descale the product. - Use only white vinegar mixed with untreated tap water during 'ANTI CALC' procedure.

Water leaks from steam head.

- The appliance is in a tilted position. - Gently return to an upright position.
- The appliance is not completely unfolded and locked. - Ensure the appliance is completely unfolded and locked.

Warning

This content is compiled from multiple sources and is provided for reference purposes only. It may not be complete or fully applicable to all situations. If you are unable to resolve your issue, please contact the product manufacturer or an authorized service provider for official support.