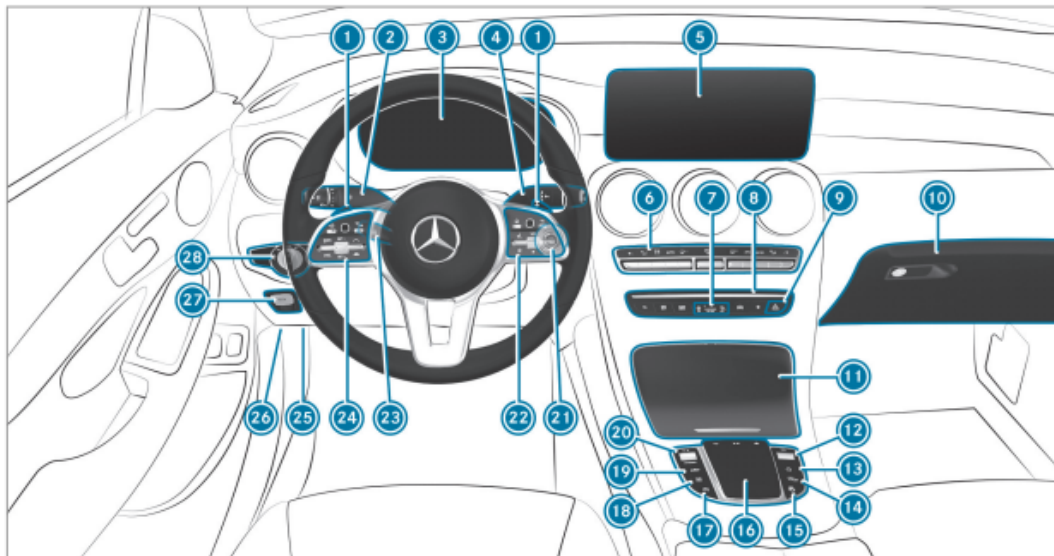


At a glance

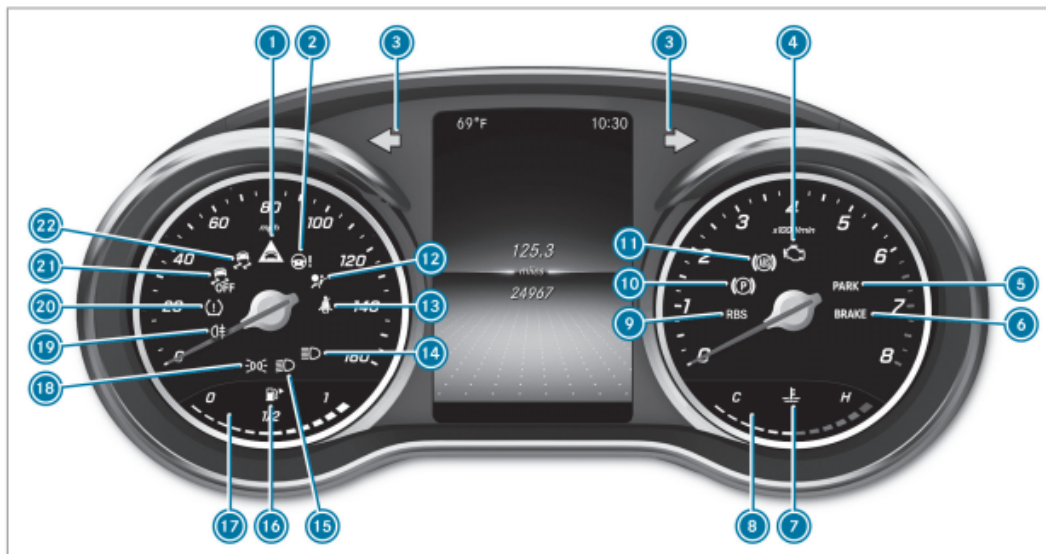
At a glance – Cockpit



Left-hand-drive vehicles

1	Steering wheel gearshift paddles	→	159	16	Touchpad	→	241
2	Combination switch	→	122	17	ECO start/stop function	→	153
3	Instrument display	→	234	18	Manual gearshifting	→	159
4	DIRECT SELECT lever	→	157	19	Sets the vehicle level	→	208
5	Media display	→	239	20	DYNAMIC SELECT switch	→	156
6	Climate control systems	→	136	21	Start/stop button	→	142
7	PASSENGER AIR BAG indicator lamps	→	48	22	Control panel for the MBUX multimedia system	→	235
8	Calls up MBUX multimedia system applications	→	241	23	Adjusts the steering wheel electrically	→	98
9	Hazard warning light system	→	123		Switches the steering wheel heater on/off	→	99
10	Glove box	→	104	24	Control panel:		
11	Storage compartment	→	104		On-board computer	→	235
12	Controller for volume and switching sound on/off	→	239		Cruise control	→	181
13	Switches the MBUX multimedia system on/off	→	239		Active Distance Assist DISTRONIC	→	185
14	Active Parking Assist	→	225	25	Diagnostics connection	→	27
15	ESP®	→	174	26	Opens the hood	→	281
27	Electric parking brake	→	167	28	Light switch	→	121

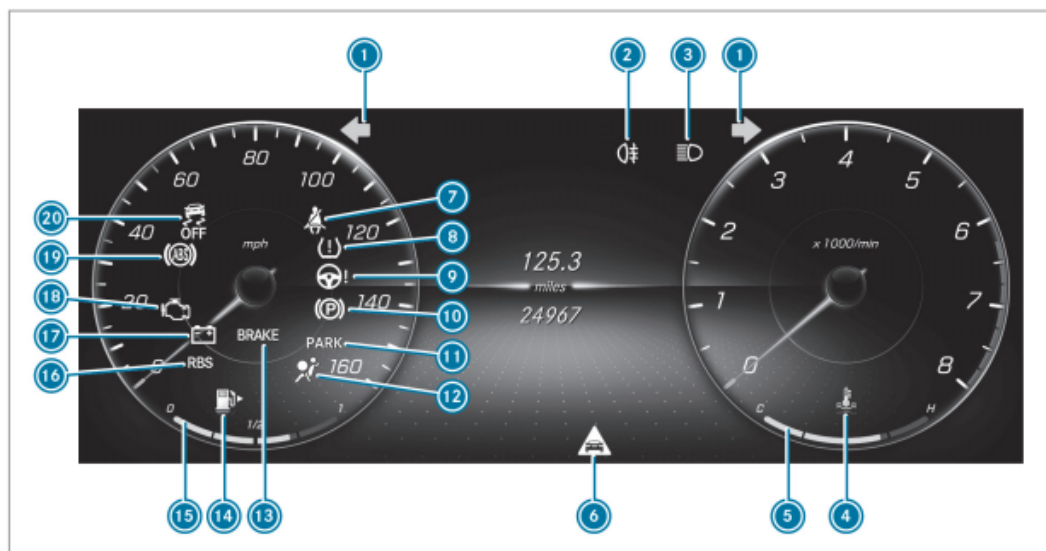
At a glance – Indicator and warning lamps (standard)



Instrument Display (standard)

1		Distance warning	→	420	10		Electric parking brake (yellow)	→	417
2		Power steering	→	413	11		ABS	→	420
3		Turn signal lights	→	122	12		Restraint system	→	412
4		Check Engine	→	414	13		Seat belt	→	412
5		Electric parking brake (red)	→	417	14		High beam	→	122
		USA only			15		Low beam	→	121
		Canada only			16		Reserve fuel with fuel filler flap location indicator	→	414
6		Brakes (red)	→	417	17		Fuel level	→	234
		USA only			18		Parking lamps	→	121
		Canada only			19		Rear fog lamp	→	122
7		Coolant temperature	→	414	20		Tire pressure monitoring system	→	423
8		Coolant temperature display	→	234	21		ESP® OFF	→	420
9		Recuperative Brake System, USA only	→	417	22		ESP®	→	420
		Brakes (yellow), Canada only	→	417					

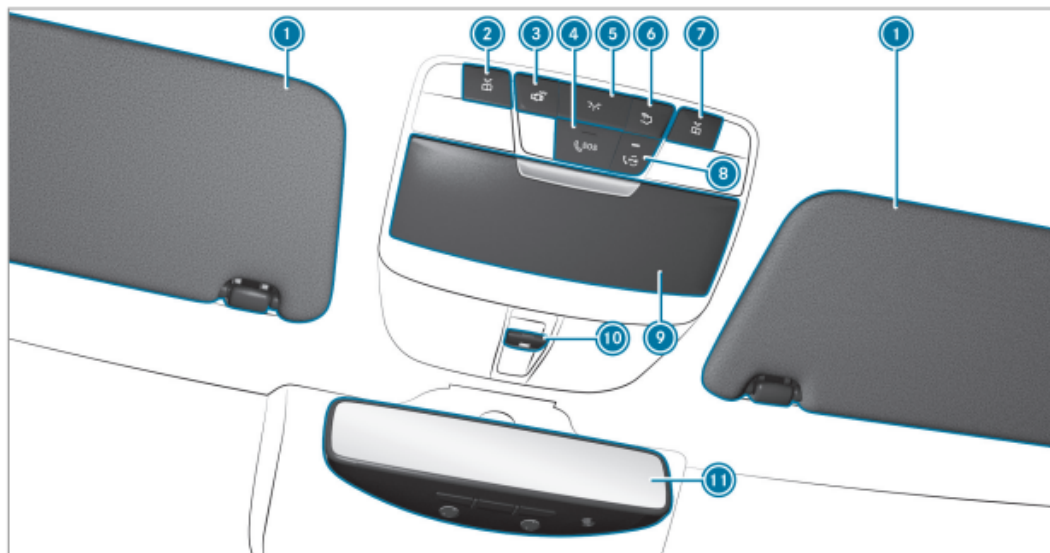
At a glance – Indicator and warning lamps (widescreen cockpit)



Widescreen cockpit instrument display

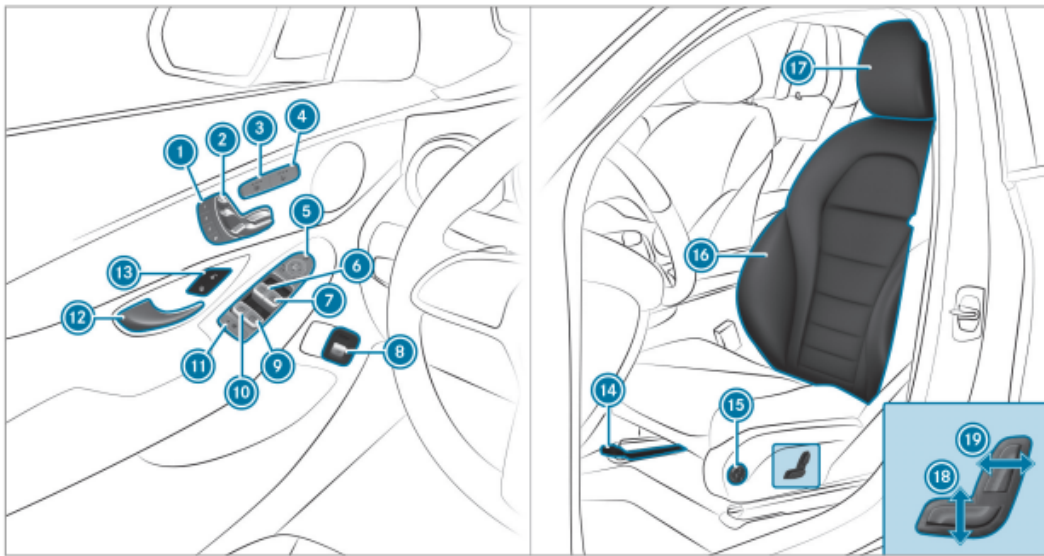
1	Turn signal lights	→	122	17	Restraint system	→	412
2	Rear fog lamp	→	122	13	Brakes (red)	→	417
3	High beam	→	122		USA only		
	Low beam	→	121		Canada only		
	Parking lamps	→	121	10	Reserve fuel with fuel filler flap location indicator	→	414
4	Coolant temperature	→	414	15	Fuel level	→	234
5	Coolant temperature display	→	234	16	RBS Recuperative Brake System, USA only	→	417
6	Distance warning	→	420		Brakes (yellow), Canada only	→	417
7	Seat belt	→	412	17	Electrical malfunction	→	414
8	Tire pressure monitoring system	→	423	18	Check Engine	→	414
9	Power steering	→	413	19	ABS	→	420
10	Electric parking brake (yellow)	→	417	20	ESP® OFF	→	420
11	Electric parking brake (red)	→	417		ESP®	→	420
	USA only						
	Canada only						

At a glance – Overhead control panel



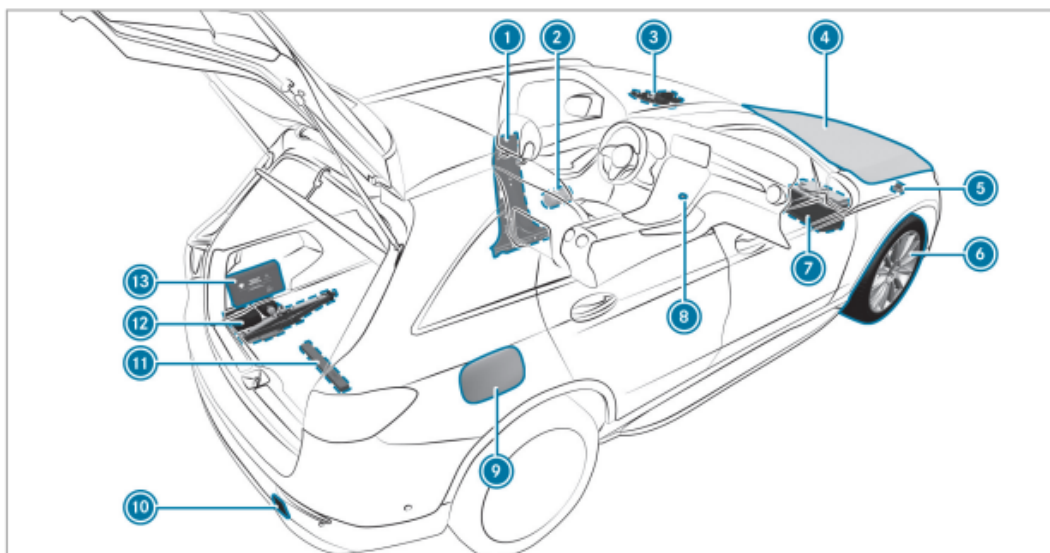
1	Sun visors			7	Switches the right-hand reading lamp on/off	→	126
2	Switches the left-hand reading lamp on/off	→	126	8	Home button	→	263
3	Switches automatic interior lighting control on/off	→	126	9	Eyeglasses compartment		
4	SOS button	→	263	10	Opens/closes the panorama roof with power tilt/sliding panel	→	82
5	Switches the front interior lighting on/off	→	126		Opens/closes the roller sunblind	→	82
6	Switches the rear interior lighting on/off	→	126	11	Inside rearview mirror	→	133

At a glance – Door operating unit and seat adjustment



1 Operates the memory function	→	101	11 Child safety lock for the rear side windows	→	65
2 Adjusts the seats electrically	→	93	12 Opens the door	→	70
3 Switches the seat heating on/off	→	96	13 Locks/unlocks the vehicle	→	70
4 Switches the seat ventilation on/off	→	97	14 Adjusts the seat fore-and-aft position	→	91
5 Operates the outside mirrors	→	132	15 Adjusts the 4-way lumbar support	→	94
6 Opens/closes the left side window	→	79	16 Seat adjustment using the multimedia system	→	95
7 Opens/closes the right side window	→	79	17 Adjusts the head restraints	→	94
8 Opens/closes the tailgate	→	73	18 Adjusts the seat height	→	91
9 Opens/closes the rear right side window	→	79	19 Adjusts the seat backrest inclination	→	91
10 Opens/closes the rear left side window	→	79			

At a glance – Emergencies and breakdowns



1	B-pillar with: QR code for accessing the rescue card	→	31	9	Fuel filler flap with: information label on fuel type	→	161
2	Safety vests	→	295		Information label on tire pressure	→	318
3	me button and SOS button	→	263		QR code for accessing the rescue card	→	31
4	To check and refill operating fluids	→	351	10	To tow-start and tow away	→	308
5	To tow-start and tow away	→	308	11	Warning triangle	→	295
6	Flat tire	→	296	12	TIREFIT kit	→	298
7	Starting assistance	→	305	13	First-aid kit (soft sided)	→	296
8	Hazard warning light system	→	123				

Opening and closing

SmartKey

Function overview

WARNING Risk of accident and injury due to children left unattended in the vehicle.

If children are left unsupervised in the vehicle, they could, in particular:

- open doors, thereby endangering other persons or road users.
- get out and be struck by oncoming traffic.
- operate vehicle equipment and become trapped, for example.

In addition, the children could also set the vehicle in motion, for example by:

- releasing the parking brake.
- changing the transmission position.
- starting the vehicle.

Never leave children unattended in the vehicle.

When leaving the vehicle, always take the SmartKey with you and lock the vehicle.

Keep the vehicle SmartKey out of reach of children.

NOTE Damage to the SmartKey caused by magnetic fields



Keep the SmartKey away from strong magnetic fields.



Vehicle key with panic alarm

1. Locks

2. Indicator lamp
3. Unlocks
4. Opens/closes the tailgate
5. Panic alarm

If indicator lamp 2 does not light up after pressing the  or  button, the battery is weak or possibly discharged. Replace the battery as soon as possible.

Replace the SmartKey battery (/ page 68).

The SmartKey locks and unlocks the following components:

- Doors
- Fuel filler flap
- Tailgate

If the vehicle is not opened within approximately 40 seconds after unlocking, it locks again. Antitheft protection is armed again.

Do not keep the SmartKey together with electronic devices or metal objects. This can affect the SmartKey's functionality.

Activating/deactivating the acoustic locking verification signal

Multimedia system:



Activate or deactivate Acoustic Lock.

Activating/deactivating the panic alarm

Requirements:

- The ignition is switched off.



To activate: press button 1 for approximately one second.

A visual and audible alarm is triggered.

To deactivate: briefly press button 1 again.



or

Press the start/stop button on the cockpit, with the SmartKey inside the vehicle.


Changing the unlocking settings

Possible unlocking functions of the SmartKey:

- Central unlocking
- Unlocking the driver's door and fuel filler flap

To switch between settings: press the  and  buttons simultaneously for approximately six seconds until the indicator lamp flashes twice.


Options if the unlocking function for the driver's door and fuel filler flap has been selected:

- To unlock the vehicle centrally: press the  button twice.
- Vehicles with KEYLESS-GO: if you touch the inner surface of the door handle on the driver's door, only the driver's door and fuel filler flap are unlocked.

Deactivating the function of the SmartKey

Vehicles with KEYLESS-GO: If you deactivate the function of the SmartKey, the KEYLESS-GO functions are also deactivated. Access or drive authorization by KEYLESS-GO is then no longer possible with that particular SmartKey. Activate the function of the SmartKey so that all its functions will again be available.

You can also deactivate the function of the SmartKey to reduce the energy consumption of the SmartKey if you do not use the vehicle or a SmartKey for an extended period of time.

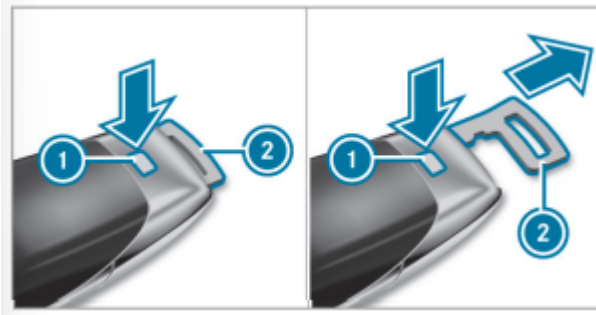
To deactivate: press the  button on the SmartKey twice in quick succession. The SmartKey indicator lamp flashes twice briefly and lights up once.

To activate: press any button on the SmartKey.

When the vehicle is started with the SmartKey in the marked space of the center console, the function of the SmartKey is automatically activated (/ page 143).

Removing/inserting the emergency key

Removing the emergency key



- Press release button 1. Emergency key 2 is pushed out slightly.
- Pull out emergency key 2 until it engages in the intermediate position.
- Press release button 1 again and fully remove emergency key 2.

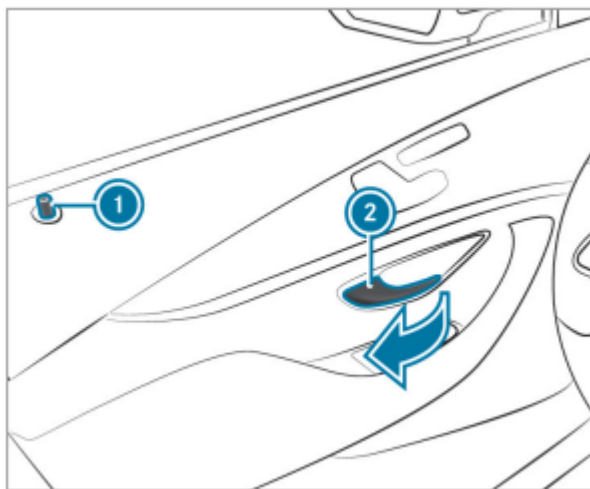
Inserting the emergency key

- Press release button 1.
- Insert emergency key 2 to the intermediate position or fully until it engages.

You can use the intermediate position of emergency key 2 to attach the SmartKey to a key ring.

Doors

Unlocking/opening the doors from the inside



To unlock and open a front door: pull door handle 2.

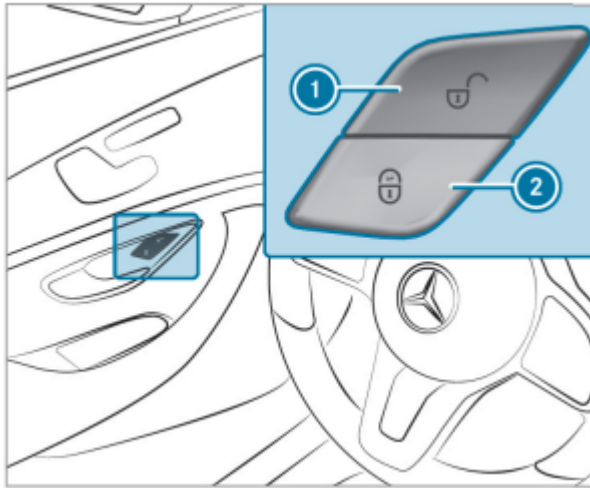
Locking pin 1 pops up when the door is unlocked.

To unlock a rear door: pull the rear door handle.

The locking pin pops up when the rear door is unlocked.

To open a rear door: pull the rear door handle again.

Centrally locking and unlocking the vehicle from the inside



To unlock: press button 1.

To lock: press button 2.

The buttons are also on the front passenger door.

This does not lock or unlock the fuel filler flap. The vehicle is not unlocked:

- If you have locked the vehicle using the SmartKey.
- If you have locked the vehicle using KEYLESS-GO.

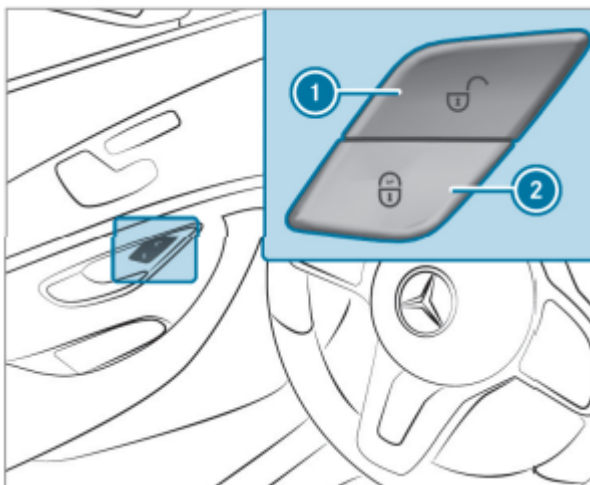
Locking/unlocking the vehicle with KEYLESS-GO

Requirements:

- The SmartKey is outside the vehicle.
- The distance between the SmartKey and the vehicle does not exceed 3 ft (1 m).
- The driver's door and the door on which the door handle is used are closed.

Activating/deactivating the automatic locking feature

The vehicle is locked automatically when the ignition is switched on and the wheels are turning faster than walking pace.



To activate: press and hold button 2 for approximately five seconds until an acoustic signal sounds.

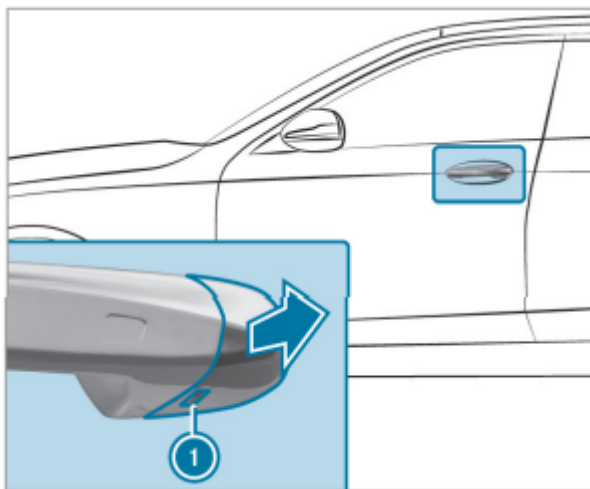
To deactivate: press and hold button 1 for approximately five seconds until an acoustic signal sounds.

In the following situations, there is a danger of being locked out when the function is activated:

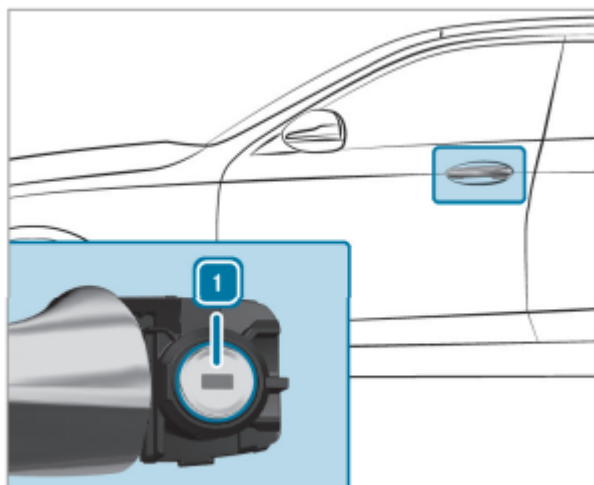
- While the vehicle is being tow-started or pushed
- If the vehicle is being tested on a roller dynamometer

Locking/unlocking the driver's door with the emergency key

If you wish to lock the vehicle entirely using the emergency key, first press the button for locking from the inside while the driver's door is open. Then proceed to lock the driver's door using the emergency key.



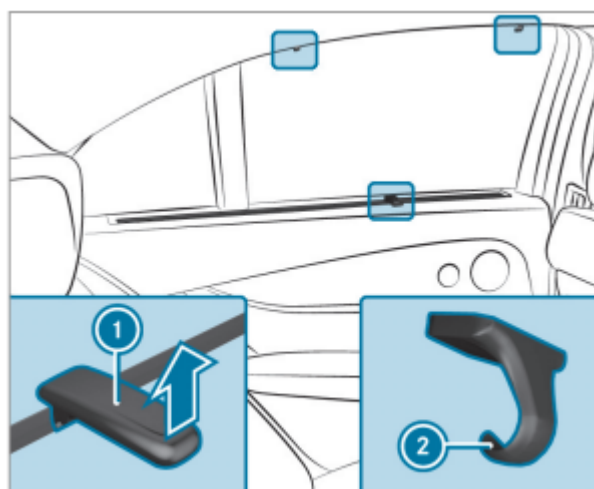
- Remove the emergency key (→ page 68).
- Insert the emergency key as far as it will go into opening 1 in the cover.
- Pull and hold the door handle.
- Pull the cover on the emergency key as straight as possible away from the vehicle until it releases.
- Release the door handle.



- To unlock: turn the emergency key counterclockwise to position 1.
- To lock: turn the emergency key clockwise to position 1.
- Carefully press the cover onto the lock cylinder until it engages and is seated firmly.

Roller sun blinds

Extending the rear side window roller sunblinds



- Pull the roller sunblind out by tab 1 and hook it onto brackets 2 at the top of the window.

Anti-theft protection

Function of the immobilizer

The immobilizer prevents your vehicle from being started without the correct SmartKey.

The immobilizer is automatically activated when the ignition is switched off and deactivated when the ignition is switched on.

When leaving the vehicle, always take the SmartKey with you and lock the vehicle. Anyone can start the engine if a valid SmartKey has been left inside the vehicle.

In the event the engine cannot be started (yet the vehicle's battery is charged), the system is not operational. Contact an authorized Mercedes-Benz Center or call 1-800-FOR-MERCEDES (in the USA) or 1-800-387-0100 (in Canada).

ATA (anti-theft alarm system)

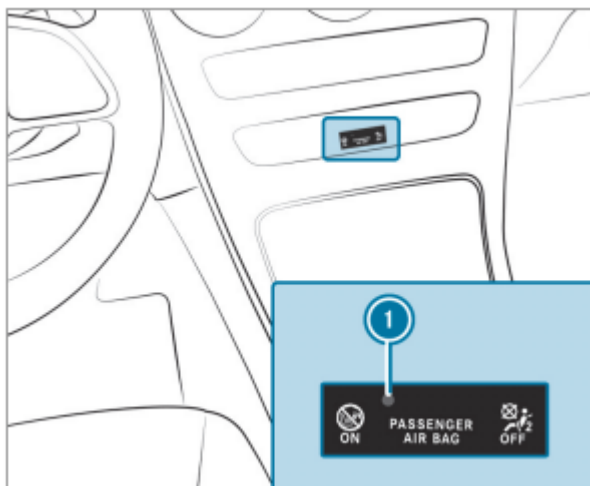
Function of the ATA system

If the ATA system is armed, a visual and audible alarm is triggered in the following situations:

- When a door is opened
- When the tailgate is opened
- When the hood is opened
- When the interior motion sensor is triggered (→ page 89)
- When the tow-away alarm is triggered (→ page 88)

The ATA system is armed automatically after approximately ten seconds in the following situations:

- After locking the vehicle with the SmartKey
- After locking the vehicle using KEYLESS-GO



Indicator lamp 1 flashes when the ATA system is armed.



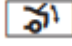
The ATA system is deactivated automatically in the following situations:

- After unlocking the vehicle with the SmartKey
- After unlocking the vehicle using KEYLESS-GO
- After pressing the start/stop button with the SmartKey in the marked space (/ page 143)

When the Mercedes-Benz emergency call system is active and the alarm stays on for more than 30 seconds, a message is automatically sent to the Customer Assistance Center (/ page 270).

In the case of severe battery discharging, the anti-theft alarm system is automatically deactivated to facilitate the next engine start.

Deactivating the ATA

- Press the ,  or  button on the SmartKey.

or

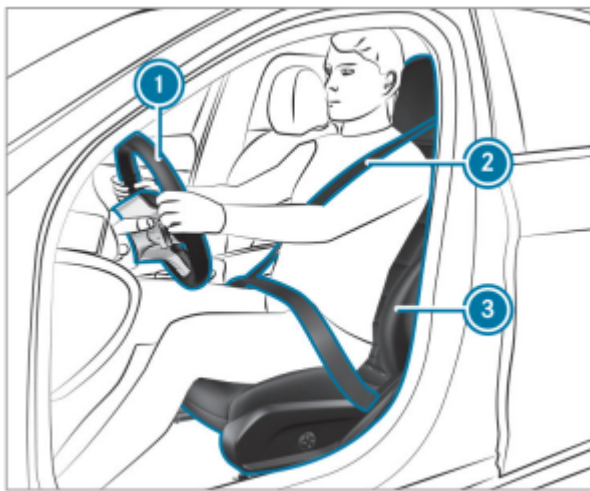
- Press the start/stop button with the SmartKey in the stowage compartment (→ page 143)

Deactivating the alarm using KEYLESS-GO

- Grasp the outside door handle with the SmartKey outside the vehicle.

Seats and stowing

Notes on the correct driver's seat position



Ensure the following when adjusting steering wheel 1, seat belt 2 and driver's seat 3:

- You are sitting as far away from the driver's airbag as possible, taking the following points into consideration:
- You are sitting in an upright position
- Your thighs are slightly supported by the seat cushion
- Your legs are not fully extended and you can depress the pedals properly
- The back of your head is supported at eye level by the center of the head restraint
- You can hold the steering wheel with your arms slightly bent
- You can move your legs freely
- You can see all the displays on the instrument cluster clearly
- You have a good overview of the traffic conditions
- Your seat belt sits snugly against your body and passes across the center of your shoulder and across your hips in the pelvic area

Seats

Adjusting the front seat manually and electrically (without Seat Comfort Package)

WARNING Risk of becoming trapped if the seats are adjusted by children

Children could become trapped if they adjust the seats, particularly when unattended.

- When leaving the vehicle, always take the SmartKey with you and lock the vehicle.
- Never leave children unattended in the vehicle.

You can adjust the seats when the ignition is switched off.

WARNING Risk of becoming trapped when adjusting the seat

When you adjust a seat, you or other vehicle occupants could become trapped, e.g. on the seat guide rail.

- When adjusting a seat, make sure that no one has any part of their body within the sweep of the seat.

Observe the safety notes on "Airbags" and "Children in the vehicle".

WARNING Risk of accident due to the driver's seat not being engaged

The driver's seat may move unexpectedly while driving.

This could cause you to lose control of the vehicle.

- Always make sure that the driver's seat is engaged before starting the vehicle.

WARNING Risk of accident due to adjusting the vehicle settings while the vehicle is in motion

You could lose control of the vehicle in the following situations in particular:

- If you adjust the driver's seat, the head restraint, the steering wheel or the mirror while the vehicle is in motion
- If you fasten your seat belt while the vehicle is in motion

Before starting the engine: In particular, adjust the driver's seat, head restraint, steering wheel and mirror, and fasten your seat belt.

WARNING Risk of becoming trapped if the seat height is adjusted carelessly

If you adjust the seat height carelessly, you or other vehicle occupants could be trapped and thereby injured.

Children in particular could accidentally press the electrical seat adjustment buttons and become trapped.

- While moving the seats, make sure that hands or other body parts do not get under the lever assembly of the seat adjustment system.

WARNING Risk of injury due to head restraints not being installed or being adjusted incorrectly

If head restraints have not been installed or have not been adjusted correctly, there is an increased risk of injury in the head and neck area, e.g. in the event of an accident or when braking.

- Always drive with the head restraints installed.
- Before driving off, make sure for every vehicle occupant that the center of the head restraint supports the back of the head at about eye level.

Do not interchange the head restraints of the front and rear seats. Otherwise, you will not be able to adjust the height and angle of the head restraints correctly.

Adjust the head restraint fore-and-aft position so that it is as close as possible to the back of your head.

WARNING Risk of injury or death due to an incorrect seat position

The seat belt does not offer the intended level of protection if you have not moved the seat backrest to an almost vertical position

In particular, you could slip beneath the seatbelt and become injured.

- Adjust the seat properly before beginning your journey.
- Always ensure that the seat backrest is in an almost vertical position and that the shoulder belt is routed across the center of your shoulder.

WARNING Risk of injury due to excessive strain on the grab handle

If you apply your full body weight to the grab handle or pull it abruptly, the grab handle may be damaged or become loose from its anchorage.

- Use the grab handles only to stabilize the seating position or to assist in getting in and out of the seat.

WARNING Risk of injury or death due to objects under the co-driver seat

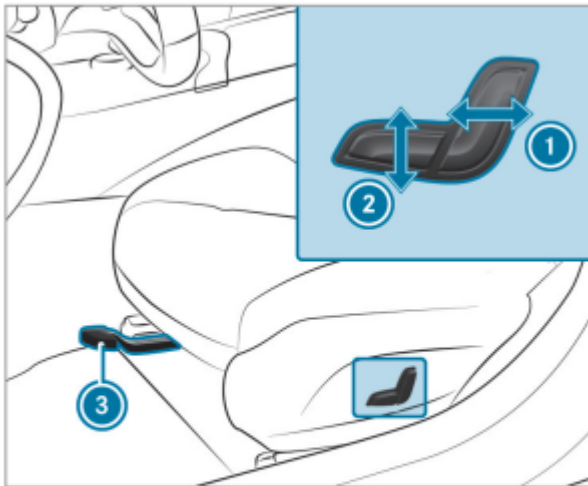
Objects trapped under the co-driver seat can interfere with the function of the automatic co-driver airbag shutoff or damage the system.

- Do not store any objects under the codriver seat.
- When the co-driver seat is occupied, make sure that no objects are trapped under the co-driver seat.

NOTE Damage to the seats when moving the seats back

The seats may be damaged by objects when moving the seats back.

- When moving the seats back, make sure that there are no objects in the footwell, under or behind the seats.

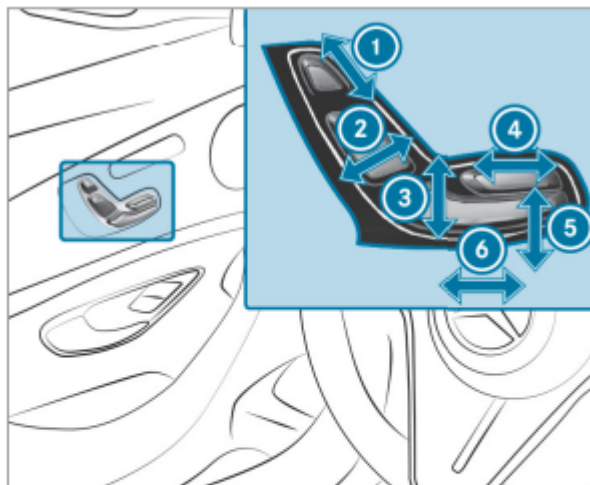


- ① Seat backrest inclination
- ② Seat height
- ③ Seat fore-and-aft position

To adjust the seat fore-and-aft position: lift lever 3 and slide the seat into the desired position.

Make sure that the seat is engaged.

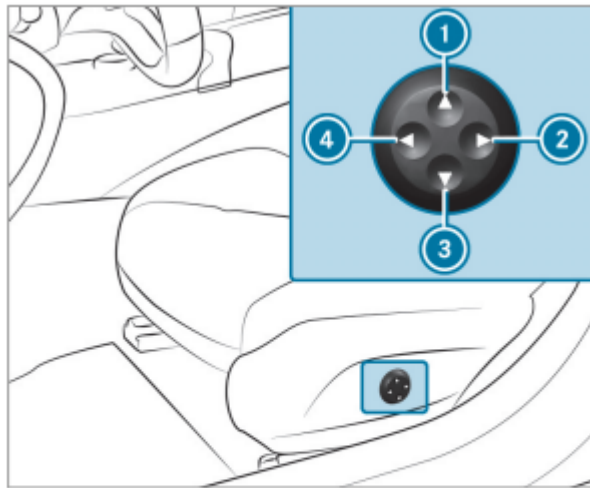
Adjusting the front seat electrically



- ① Head restraint height
- ② Seat backrest inclination
- ③ Seat height
- ④ Seat cushion length
- ⑤ Seat cushion inclination
- ⑥ Seat fore-and-aft position

Save the settings with the memory function (→ page 101).

Adjusting the 4-way lumbar support



- ① Higher
- ② Softer
- ③ Lower
- ④ Firmer

- Using buttons 1 to 4, adjust the contour of the backrest individually to suit your back.

Light and visibility

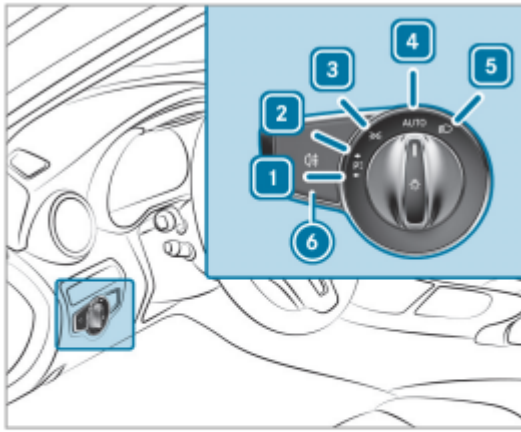
Exterior lighting

Information about lighting systems and your responsibility

The various lighting systems of the vehicle are only aids. The driver of the vehicle is responsible for correct vehicle illumination in accordance with the prevailing light and visibility conditions, legal requirements and traffic situation.

Light switch

Operating the light switch



- 1 Left-hand standing lamps
- 2 Right-hand standing lamps
- 3 Parking lamps and license plate lamp
- 4 **AUTO** Automatic driving lights (preferred light switch position)
- 5 Low beam/high beam
- 6 Switches the rear fog light on/off

When low beam is activated, the indicator lamp for the parking lamps will be deactivated and replaced by the low beam indicator lamp.

- Always park your vehicle safely using sufficient lighting, in accordance with the relevant legal stipulations.

NOTE Battery discharging by operating the standing lights

Operating the standing lights over a period of hours puts a strain on the battery

- Where possible, switch on the right or left parking light.

If the battery is insufficiently charged, the standing lamps or parking lamps will be switched off automatically to facilitate the next engine start.

The exterior lighting (except standing and parking lamps) will switch off automatically when the driver's door is opened.

- Observe the notes on surround lighting (/ page 126).

Automatic driving lights function

The parking lamps, low beam and daytime running lamps are switched on automatically depending on the ignition status and the ambient light.

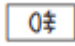
The automatic driving lights are only an aid. You are responsible for vehicle lighting.

Switching the rear fog lights on or off

Requirements:

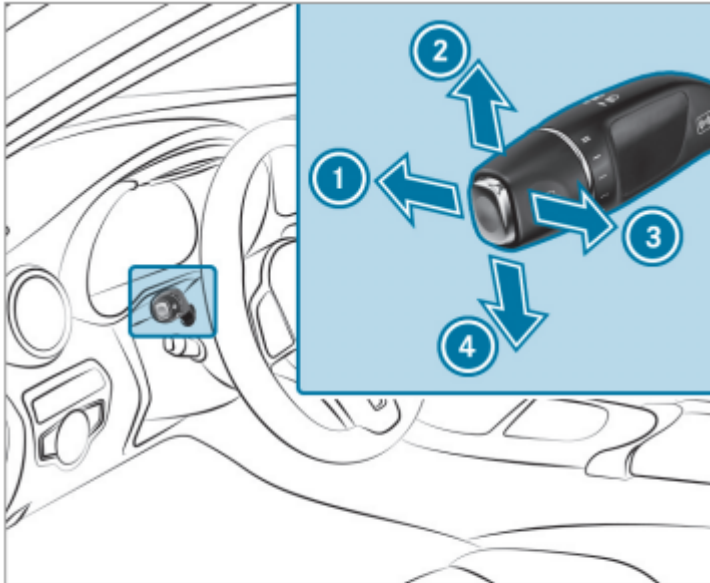
- The light switch is in the or **AUTO** position.



Press the  button.

Please observe the country-specific laws on the use of rear fog lamps.


Operating the combination switch for the lights





- ① High beam
- ② Turn signal light, right
- ③ High-beam flasher
- ④ Turn signal light, left

- Use the combination switch to activate the desired function.

Switching on high beam

- Turn the light switch to the  or **AUTO** position.
- Push the combination switch beyond the point of resistance in the direction of arrow ①.

When the high beam is activated, the  indicator lamp for low beam will be deactivated and replaced by the  indicator lamp for high beam.

Switching off high beam

- Move the combination switch back to its starting position.

High-beam flasher

- Pull the combination switch in the direction of arrow ③.

Turn signal light

- To indicate briefly: push the combination switch briefly to the point of resistance in the direction of arrow ② or ④.

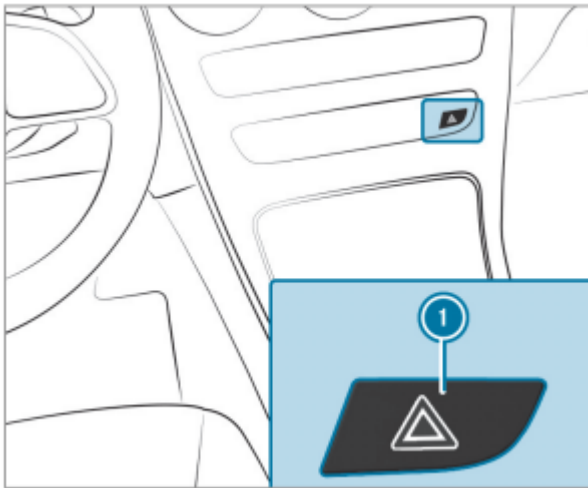
The corresponding turn signal light will flash three times.

To indicate permanently: push the combination switch beyond the point of resistance in the direction of arrow ② or ④.

Vehicles with Active Lane Change Assist:

- A turn signal indicator activated by the driver may continue to operate for the duration of the lane change.
- If the driver indicated directly beforehand but a lane change was not immediately possible, the turn signal indicator may activate automatically.

Activating/deactivating the hazard warning lights



- Press button ①.

The hazard warning lights will switch on automatically if:

- The airbag has been deployed.

Cornering light

Cornering light function



The cornering light improves the illumination of the road over a wide angle in the turning direction, enabling better visibility on tight curves, for example. It can be activated only when the low beam is switched on.

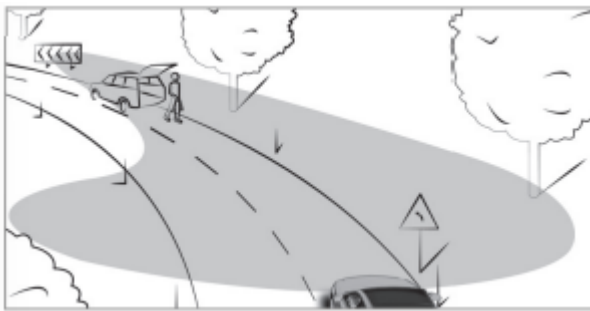
The function is active in the following cases:

- At speeds below 25 mph (40 km/h) when the turn signal light is switched on or the steering wheel is turned
- At speeds between 25 mph (40 km/h) and 43 mph (70 km/h) and when the steering wheel is turned

Roundabout and intersection function: the cornering light will be activated on both sides based on an evaluation of the vehicle's current GPS position. It will remain active until after the vehicle has left the roundabout or the intersection.

Active headlamps

Active headlamps function



- The headlamps follow the steering movements.
- Relevant areas are better illuminated during a journey.

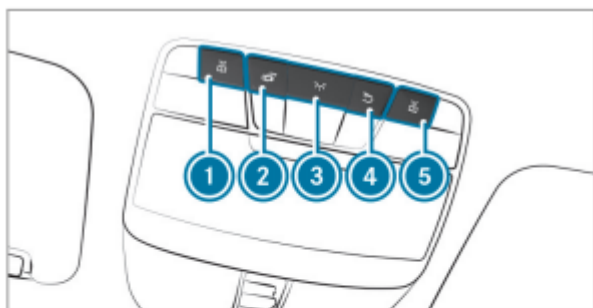
The functions are active when the low beam is switched on.

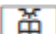
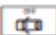



Depending on the vehicle's equipment, the course of the lane in which you are driving will also be evaluated and the active headlamps function will adjust the light in advance.

Interior lighting

Adjusting the interior lighting

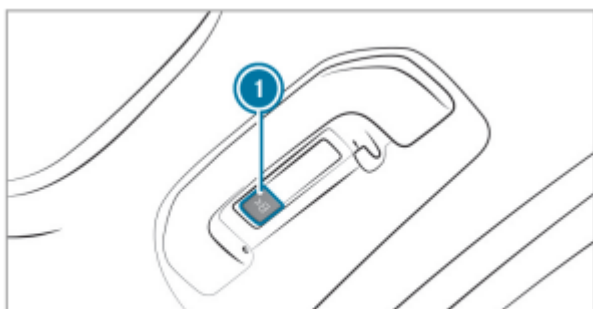
Front overhead control panel

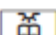


- ①  Front left reading lamp
- ②  Automatic interior lighting control
- ③  Front interior lighting
- ④  Rear interior lighting
- ⑤  Front right reading lamp

- To switch on/off: press button 1 – 5 accordingly.

Control panel in the grab handle



- ①  Rear reading lamp

- To switch on/off: press button 1.

Adjusting the ambient lighting

  **Comfort**  **Ambient Lighting**

Setting the color

- Select Color.
- Set the desired color.

Adjusting the brightness

- Select Brightness.
- Adjust the brightness.

Activating the brightness for zones

- Select Brightness.
- Select Brightness Zones.

- Switch the function on or off.

or

- Set the brightness for the desired zones.

Activating multi-color lighting

- Select Color.
- Select Multi-color.
- Select a color combination.

Activating multi-color animation

- Select Color.
- Select Multi-color Animation.

The chosen color combination will change at predefined intervals.

Activating welcome lighting

- Select Color.
- Select Welcome.

When the vehicle is unlocked, a special ambient lighting sequence will run.

Activating dependency on air conditioning settings

- Select Color.
- Select Climate.

If changes are made to the temperature setting in the vehicle, the color of the ambient lighting will change briefly.

Switching the interior lighting switch-off delay time on/off

 Settings >> Light

Multimedia system: >> Interior Lighting Delay

- Switch the switch-off delay time on or off. When this function is active, the interior lighting lights up for a short time after the vehicle is locked.

Driving and parking

Driving

Notes on Mercedes-AMG vehicles

Observe the notes on the following topics in the Supplement, otherwise you may fail to recognize dangers.

The availability of certain functions depends on the equipment and model of the vehicle.

- Emotion Start
- AMG Performance exhaust system
- AMG ceramic high-performance composite brake system
- RACE START
- AMG adaptive sport suspension system
- AMG steering-wheel buttons

Switching on the power supply or ignition

WARNING Risk of accident and injury due to children left unattended in the vehicle

If children are left unsupervised in the vehicle, they could, in particular:

- open doors, thereby endangering other persons or road users.
- get out and be struck by oncoming traffic.
- operate vehicle equipment and become trapped, for example.

In addition, the children could also set the vehicle in motion, for example by:

- releasing the parking brake.
- changing the transmission position.
- starting the vehicle.

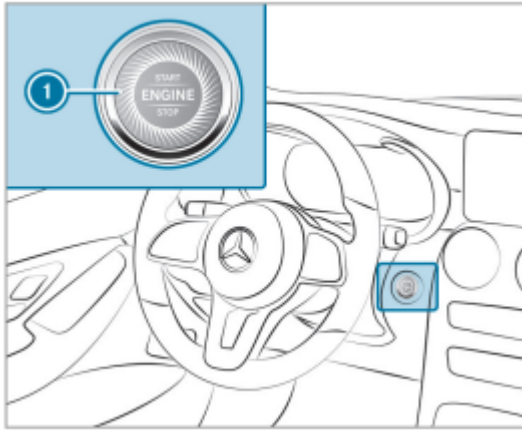
Never leave children unattended in the vehicle.

When leaving the vehicle, always take the SmartKey with you and lock the vehicle.

Keep the vehicle SmartKey out of reach of children.

Requirements:

- The SmartKey is in the vehicle and is recognized.
- The brake pedal is not depressed.



- To switch on the power supply: press button ❶ once. You can, for example, activate the windshield wipers.

You can, for example, activate the windshield wipers.

The power supply is switched off again if the following conditions are met:

- You open the driver's door.
- You press button ❶ twice more.

To switch on the ignition: press button ❶ twice.

Indicator and warning lamps appear in the instrument cluster.

The ignition is switched off again if one of the following conditions is met:

- You do not start the vehicle within 15 minutes and the transmission is in position **P** or the electric parking brake is applied.
- You press button ❶ once.

Starting the vehicle via Remote Online Services

Cooling or heating the vehicle interior before starting the journey

Ensure the following before starting the engine:

- the legal stipulations in the area where your vehicle is parked allow engine starting via smartphone.
- it is safe to start and run the engine where your vehicle is parked.
- the fuel tank is sufficiently full.
- the starter battery is sufficiently charged.

Charging the starter battery before starting the journey

If the vehicle battery is discharged, you can receive a message on your smartphone. You can then start the vehicle with the smartphone to charge the battery. The vehicle is automatically switched off after ten minutes.

Ensure the following before starting the engine:

- The legal stipulations in the area where your vehicle is parked allow engine starting via smartphone.
- It is safe to start and run the engine where your vehicle is parked.
- The fuel tank is sufficiently full.

Starting the vehicle (Remote Online)

Requirements:

- Park position **P** is selected.
- The anti-theft alarm system is not activated.
- The panic alarm is not activated.
- The hazard warning light system is switched off.
- The hood is closed.
- The doors are closed and locked.
- The windows and sliding sunroof are closed.

Start the vehicle using the smartphone. After every engine start, the engine runs for ten minutes.

You can carry out a maximum of two consecutive starting attempts. You must start the vehicle once with the SmartKey before trying to start the engine again with the smartphone. You can stop the vehicle again at any time.

Further information can be found in the smartphone app.

Securing the engine against starting before carrying out maintenance or repair work:

Switch on the hazard warning light system.

or

Unlock the doors.

or

Open a side window or the sliding sunroof.

Breaking-in notes

To preserve the engine during the first 1,000 miles (1,500 km):

- Drive at varying road speeds and engine speeds.
- Do not drive at speeds greater than 85 mph (140 km/h).
- Drive the vehicle in drive program **C** or **E**.
- Shift to the next highest gear at the very latest when the needle reaches the last third before the red area in the tachometer.

- Do not shift down a gear manually in order to brake.
- Avoid overstraining the vehicle, e.g. driving at full throttle.
- Do not depress the accelerator pedal past the pressure point (kickdown).
- Only increase the engine speed gradually and accelerate the vehicle to full speed after 1,000 miles (1,500 km).

This also applies when the engine or parts of the drivetrain have been replaced.

Please also observe the following breaking-in notes:

In certain driving and driving safety systems, the sensors adjust automatically while a certain distance is being driven after the vehicle has been delivered or after repairs. Full system effectiveness is not reached until the end of this teach-in process.

Brakepads, brake discs and tires that are either new or have been replaced only achieve optimum braking effect and grip after several hundred kilometers of driving. Compensate for the reduced braking effect by applying greater force to the brake pedal.

Notes on optimized acceleration

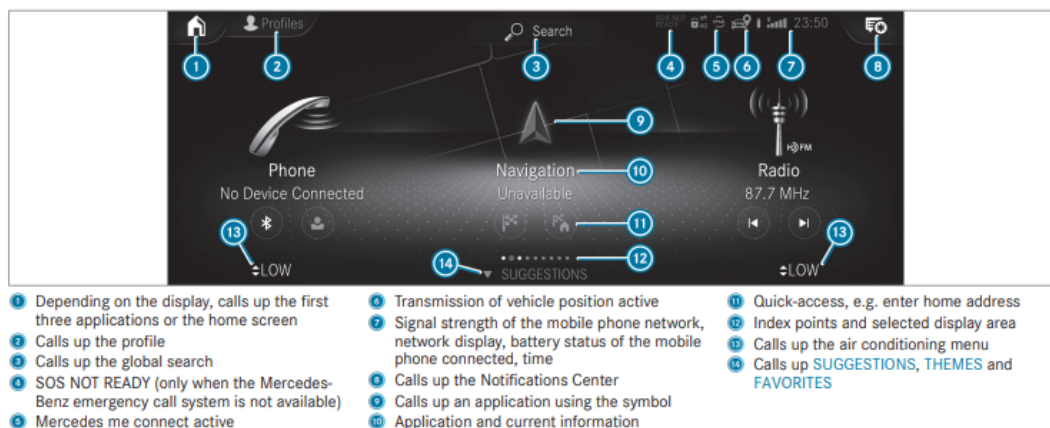
If all necessary requirements and activation conditions are fulfilled, the best possible acceleration can be achieved from a standstill.

Do not use the optimized acceleration on public roads. Individual wheels could spin and you could lose control of the vehicle. There is an increased risk of skidding and/or accident.

Be sure to observe the safety notes and information on ESP® (/ page 174).

MBUX multimedia system

Home screen overview



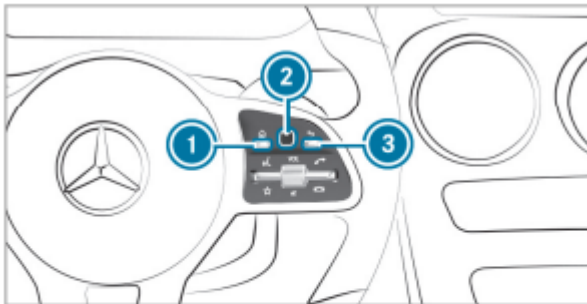
If Mercedes me connect is active 5, the vehicle is linked with Mercedes me connect. Vehicle data is then transmitted to the backend system. What data is transmitted depends on which services



are activated. Further details can be found in the Mercedes me connect terms and conditions and data protection information. The function is country-dependent.

If transmission of vehicle position is active 6, Mercedes me connect services have been activated for this vehicle which access the vehicle's geolocation. In which instances the geolocation is transmitted depends on the particular services. Further details can be found in the Mercedes me connect terms and conditions and data protection information. The function is country-dependent.

Operating the MBUX multimedia system

Using Touch Control



- 1  Calls up the home screen
- 2 Touch Control
- 3  Pressing briefly: returns to the previous display

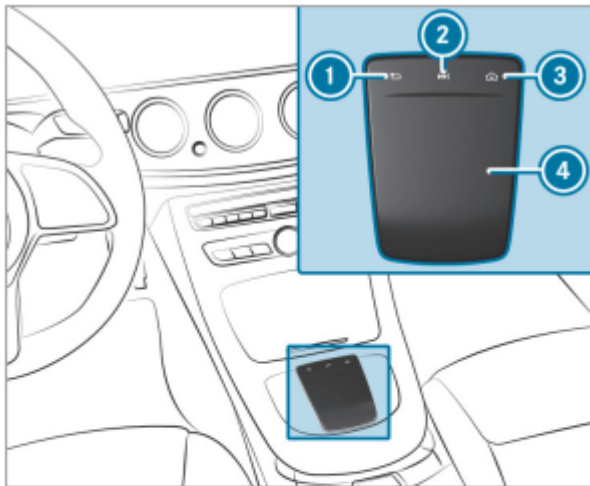
Navigation through the menus is carried out with Touch Control 2 with single-finger swipes.

- To select a menu option: swipe and press.
- To move the digital map: swipe in any direction.

Using the touchscreen

- Select menu options, symbols or characters by pressing briefly.
- To navigate in menus: swipe up, down, left or right.
- To use handwriting to enter characters: write the character with one finger on the touchscreen.
- To zoom in and out of the map: move two fingers together or apart.
- To call up the global menu: press and hold on the touchscreen until the OPTIONS menu appears.

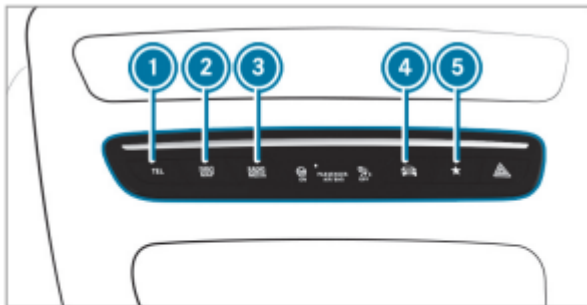
Using the touchpad



- ① Returns to the previous display
- ② Calls up the audio control menu
Swiping to the left of right: selects the previous or next radio station/music track
- ③ Calls up the home screen
- ④ Touchpad

- To select a menu option: swipe and press.
- To use handwriting recognition: write a character on the touchpad.
- To open or close the Notifications Center: swipe down or up with two fingers.
- To zoom in and out of the map: move two fingers together or apart.

Calling up applications using buttons



- ① Calls up the telephone
- ② Calls up navigation
- ③ Calls up radio or media
- ④ Calls up vehicle functions
- ⑤ Press briefly: calls up favorites
Press and hold: adds a favorite or theme or creates a new theme

Alternatively, tap on the touchscreen. Call up the application (→ page 240).

Maintenance and care

Engine compartment

Opening and closing the hood

WARNING Risk of accident due to driving with the hood unlocked

The hood may open and block your view.

- Never release the hood when driving.
- Before every trip, ensure that the hood is locked.

WARNING Risk of accident and injury when opening and closing the hood

The hood may suddenly drop into the end position.

There is a risk of injury for anyone in the hood's range of movement.

- Do not open or close the hood if there is a person in the hood's range of movement.

WARNING Risk of burns when opening the hood

If you open the hood when the engine has overheated or when there is a fire in the engine compartment, the following situations may occur:

- You could come into contact with hot gases.
- You could come into contact with other hot, escaping operating fluids.

Before opening the hood, allow the overheated engine to cool down.

In the event of a fire in the engine compartment, keep the hood closed and call the fire service.

WARNING Risk of injury due to moving parts

Components in the engine compartment may continue running or start up suddenly, even if the ignition is switched off.

Make sure of the following before performing tasks in the engine compartment:

- Switch the ignition off.
- Never reach into the danger zone surrounding moving components, e.g. the rotation area of the fan.
- Remove jewellery and watches.
- Keep items of clothing and hair away from moving parts.

WARNING Risk of injury from touching components under voltage

The ignition system and the fuel injection system work under high voltage. You could receive an electric shock.

- Never touch components of the ignition system or the fuel injection system when the ignition is switched on.

The live components include the following, for example:

- Ignition coils
- Spark plug connectors
- Injectors

WARNING Risk of burns from hot component parts in the engine compartment

Certain component parts in the engine compartment can be very hot, e.g. the engine, the cooler and parts of the exhaust system.

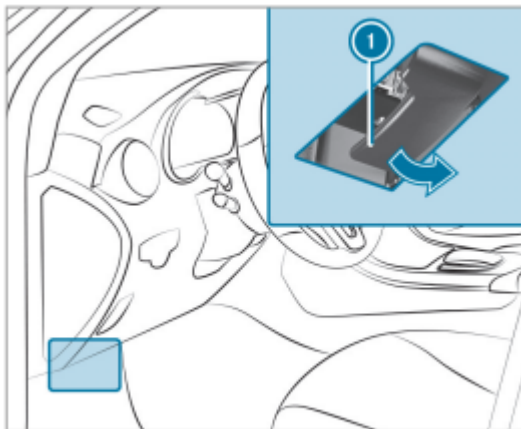
- Allow the engine to cool down and only touch component parts described in the following.

WARNING Risk of injury from using the windshield wipers while the engine hood is open

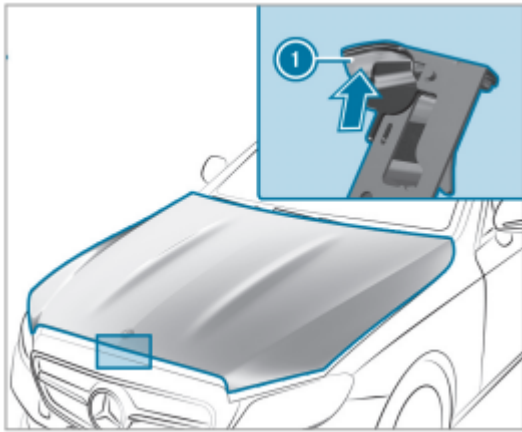
When the engine hood is open and the windshield wipers are set in motion, you can be trapped by the wiper linkage.

- Always switch off the windshield wipers and ignition before opening the engine hood.

Opening the hood



▶ To release the hood, pull on handle ❶.



- Push handle 1 of the hood catch upwards and lift the hood until it opens automatically.

Closing the hood

- Lower the hood to a height of around 8 in (20 cm) and then allow it to fall, applying a little force as you let it go.
- If the hood can still be lifted slightly, open the hood again and close it with a little more force until it engages correctly.

Engine oil

Checking the engine oil level using the oil dipstick

WARNING Risk of burns from hot component parts in the engine compartment

Certain component parts in the engine compartment can be very hot, e.g. the engine, the cooler and parts of the exhaust system.

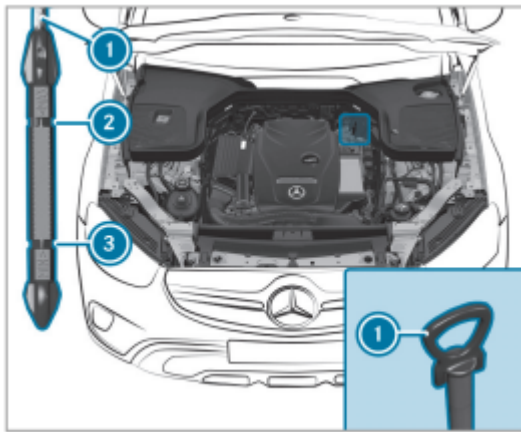
- Allow the engine to cool down and only touch component parts described in the following.

Requirements:

The engine has an oil dipstick. If not, the engine oil level can be checked only with the on-board computer (/ page 284).

Depending on the engine, the oil dipstick may be installed in the engine compartment in different locations.

The waiting time before checking the oil level when the engine is at normal operating temperature is five minutes.



Park the vehicle on a level surface.

Pull oil dipstick 1 out and wipe off.

Slowly slide oil dipstick 1 into the guide tube to the stop, and pull it out again after about three seconds.

- Oil level is correct: oil level is between 2 and 3.
- Oil level too low: oil level is at 3 or below.
- Oil level too high: oil level is above 2.

If the oil level is too low, add 1.1 US qt (1 liter) of engine oil.

If the oil level is too high, drain off excess engine oil. Consult a qualified specialist workshop.

Checking the engine oil level using the onboard computer

Requirements:

- The engine has been warmed up.
- The vehicle is parked on a level surface.
- The engine is running at idle speed.
- The hood is closed.

The engine oil level is determined during driving. Determining the engine oil level can take up to 30 minutes with a normal driving style and even longer with an active driving style.

On-board computer: [↗ Service](#) [▶▶ Engine Oil Level](#)

One of the following messages will appear on the multifunction display:

- Measuring Engine Oil Level...: measurement of the oil level is not yet possible.

Repeat the request after a maximum of 30 minutes' driving.

- Engine Oil Level OK and the bar display for indicating the oil level on the multifunction display is green and is between "min" and "max": the oil level is correct.

- Engine Oil Level Add 1.0 l and the bar display for indicating the oil level on the multifunction display is orange and is below "min":

Add 1.1 US qt (1 l) of engine oil.

- Reduce Engine Oil Level and the bar display for indicating the oil level on the multifunction display is orange and is above "max":

Drain off any excess engine oil that has been added. To do so, consult a qualified specialist workshop.

- For Engine Oil Level Switch Ignition On

Switch on the ignition to check the engine oil level.

- Engine Oil Level System Inoperative: The oil level sensor is defective or not connected.

Consult a qualified specialist workshop.

- Engine Oil Level System Currently Unavail.

Close the hood.

Cleaning and care

Notes on washing the vehicle in a car wash

WARNING Risk of accident due to reduced braking effect after washing the vehicle

The braking effect is reduced after washing the vehicle.

- After the vehicle has been washed, brake carefully while paying attention to the traffic conditions until the braking effect has been fully restored.

NOTE Damage from automatic braking

If one of the following functions is switched on, the vehicle brakes automatically in certain situations:

- Active Brake Assist
- Active Distance Assist DISTRONIC
- HOLD function
- Active Parking Assist

To avoid damage to the vehicle, deactivate these systems in the following or similar situations:

- During towing
- In a car wash

NOTE Damage due to unsuitable car wash

Before driving into a car wash make sure that the car wash is suitable for the vehicle dimensions.

Ensure there is sufficient ground clearance between the underbody and the guide rails of the car wash.

Ensure that the clearance width of the car wash, in particular the width of the guide rails, is sufficient.

To avoid damage to your vehicle when using a car wash, ensure the following beforehand:

- Active Distance Assist DISTRONIC is deactivated.
- The HOLD function is switched off.
- The surround view camera or the rear view camera is switched off.
- The side windows and sliding sunroof are completely closed.
- The blower for the ventilation/heating is switched off.
- The windshield wiper switch is in position **O**.
- The SmartKey is at a minimum distance of 10 ft (3 m) away from the vehicle. Otherwise the tailgate could open unintentionally.
- In automatic car washes with conveyor systems:
 - Neutral **N** is engaged.
 - If you would like to leave the vehicle while it is being washed, make sure the Smart-Key is located in the vehicle. The park position **P** is otherwise automatically engaged.

If, after the car wash, you remove the wax from the windshield and wiper rubbers, this will prevent smearing and reduce wiper noise.

Notes on using a power washer

WARNING Risk of an accident when using power washers with round-spray nozzles

The water jet can cause externally invisible damage.

Components damaged in this way may unexpectedly fail.

- Do not use a power washer with roundspray nozzles.
- Have damaged tires or chassis parts replaced immediately.

To avoid damage to your vehicle, observe the following when using a power washer:

- The SmartKey is at a minimum distance of 10 ft (3 m) away from the vehicle. Otherwise, the tailgate could open unintentionally.
- Maintain a distance of at least 11.8 in (30 cm) to the vehicle.

- Vehicles with decorative foil: Parts of your vehicle are covered with a decorative foil. Maintain a distance of at least 27.6 in (70 cm) between the foil-covered parts of the vehicle and the nozzle of the power washer. Move the power washer nozzle around whilst cleaning. The water temperature of the power washer must not exceed 140°F (60°C).
- Observe the information on the correct distance in the equipment manufacturer's operating instructions.
- Do not direct the nozzle of the power washer directly at sensitive parts, such as tires, gaps, electrical components, batteries, light sources and ventilation slits.

Washing the vehicle by hand

NOTE Engine damage due to water ingress

- Take care not to point the water jet directly towards the air inlet grille below the hood.

Observe the legal requirements, e.g. in a number of countries, washing by hand is only permitted in specially designated wash bays.

- Use a mild cleaning agent, e.g. car shampoo.
- Wash the vehicle with lukewarm water using a soft car sponge. When doing so, do not expose the vehicle to direct sunlight.
- Carefully hose the vehicle off with water and dry using a chamois.

Observe the notes on the care of vehicle parts (→ page 291).

Notes on paintwork/matte finish paintwork care

Observe the notes on cleaning and care to avoid damaging the paintwork.

Paint

- Insect remains: soak with insect remover and rinse off the treated areas afterwards.
- Bird droppings: soak with water and rinse off afterwards.
- Tree resin, oils, fuels and greases: remove by rubbing gently with a cloth soaked in petroleum ether or lighter fluid.
- Coolant and brake fluid: remove with a damp cloth and clean water.
- Tar stains: use tar remover.
- Wax: use silicone remover.
- Do not attach stickers, films or similar materials.
- Remove dirt immediately, where possible.

Matte finish

- Only use care products approved for Mercedes-Benz.
- Do not polish the vehicle and alloy wheels.
- Only use car washes that correspond to the latest engineering standards.
- Do not use car wash programs with a final hot wax treatment.
- Do not use paint cleaners, buffing or polishing products, gloss preservers, e.g. wax.
- Always have paintwork repairs carried out at a qualified specialist workshop.

Notes on cleaning decorative foils

Observe the notes on matte finish care in the chapter "Notes on paintwork/matte finish paintwork care" (→ page 289). They also apply to matte decorative foils.

Observe the notes on cleaning decorative foils to avoid vehicle damage.

Cleaning

- For cleaning, use plenty of water and a mild cleaning agent without additives or abrasive substances, e.g. a car shampoo approved for Mercedes-Benz.
- Remove dirt immediately, where possible, whilst avoiding rubbing too hard. There is otherwise a risk of damaging the decorative foil irreparably.
- If there is dirt on the finish or if the decorative foil is dull: use the Paint Cleaner recommended and approved for Mercedes-Benz.
- Insect remains: soak with insect remover and rinse off the treated areas afterwards.
- Bird droppings: soak with water and rinse off afterwards.
- To prevent water stains, dry a foil-wrapped vehicle with a soft, absorbent cloth after every car wash.

Avoiding damage to the decorative foil

- The service life and color of decorative foils are impaired by:
 - Sunlight
 - Temperature, e.g. hot air blower
 - Weather conditions
 - Stone chippings and dirt
 - Chemical cleaning agents
 - Oily products
- Do not use polish on matte decorative foil. Polishing will have the effect of shining the foil-wrapped surface.

- Do not treat matte or structured decorative foils with wax. Permanent stains may occur.

Scratches, corrosive deposits, areas affected by corrosion and damage caused by incorrect care cannot always be completely repaired. In such cases, visit a qualified specialist workshop.

You can obtain more information on care and cleaning products from the manufacturer.

In the case of foil-wrapped surfaces, optical differences may occur between the surfaces that were not protected by a decorative foil after removing a decorative foil.

Have work or repairs to decorative foils carried out at a qualified specialist workshop, e.g. at an authorized Mercedes-Benz Center.

Notes on care of vehicle parts

WARNING Risk of entrapment if the windshield wipers are switched on while the windshield is being cleaned

If the windshield wipers are set in motion while you are cleaning the windshield or wiper blades, you can be trapped by the wiper arm.

- Always switch off the windshield wipers and the ignition before cleaning the windshield or wiper blades.

WARNING Risk of burns from the tailpipe and tailpipe trims

The exhaust tailpipe and tailpipe trims can become very hot. If you come into contact with these parts of the vehicle, you could burn yourself.

- Always be particularly careful around the tailpipe and the tailpipe trims and supervise children especially closely in this area.
- Allow vehicle parts to cool down before touching them.

To avoid damage to the vehicle, observe the notes on cleaning and care of the following vehicle parts:

Wheels and rims

- Use water and acid-free alloy wheel cleaners.
- Do not use acidic alloy wheel cleaners to remove brake dust. This could damage wheel bolts and brake components.
- To avoid corrosion of the brake discs and brakepads, drive the vehicle for a few minutes after cleaning before parking it. The brake discs and brakepads warm up and dry out.

Windows

- Clean the windows inside and outside with a damp cloth and with a cleaning agent recommended for Mercedes-Benz.

- Do not use dry cloths or abrasive or solventbased cleaning agents to clean the inside of windows.

Remove external fogging or dirt on the windshield in front of the multifunction camera. Otherwise, driving systems and driving safety systems may be impaired or not available (→ page 171).

Wiper blades

- Move the wiper arms into the replacement position (→ page 129).
- With the wiper arms folded out, clean the wiper blades with a damp cloth.
- Do not clean the wiper blades too often.

Exterior lighting

- Clean the lenses with a wet sponge and mild cleaning agent, e.g. car shampoo.
- Only use cleaning agents or cleaning cloths that are suitable for plastic lenses.

Sensors

- Clean the sensors in the front and rear bumpers with a soft cloth and car shampoo (→ page 171).
- When using a power washer, maintain a minimum distance of 11.8 in (30 cm).

Running boards

- Use water and acid-free cleaning agents.
- Do not clean the aluminum trim insert of the running board with alkaline or acidic cleaning agents such as wheel cleaners. Do not use acidic alloy wheel cleaners to remove brake dust. The aluminum trim inserts could otherwise be damaged.

Rear view camera and surround view camera

- Open the camera cover with the multimedia system (/ page 218).
- Use clean water and a soft cloth to clean the camera lens.
- Do not use a power washer.

Tailpipes

- Clean with a cleaning agent recommended for Mercedes-Benz, especially in the winter and after washing the vehicle.
- Do not use acidic cleaning agents.

Trailer hitch

- Observe the notes on care in the trailer hitch manufacturer's operating instructions.
- Do not clean the ball neck with a power washer or solvent.
- Remove traces of rust on the ball, for example, with a wire brush.
- Remove dirt with a lint-free cloth.

- After cleaning, lightly oil or grease the ball head.

Before using trailers with anti-torsional coupling, observe the manufacturer's operating instructions.

Notes on care of the interior

To avoid damage to the vehicle, observe the following notes on cleaning and care:

Seat belts

- Clean with lukewarm and soapy water.
- Do not use chemical cleaning agents.
- Do not dry by heating them to over 176°F (80°C) or exposing them to direct sunlight.

Display

- Switch off the display and let it cool down.
- Clean the surface carefully with a microfiber cloth and a suitable display care product (TFT-LCD).
- Do not use any other agents.

Plastic trim

- Clean with a damp microfiber cloth.
- For heavy soiling: use a cleaner recommended for Mercedes-Benz.
- Do not attach stickers, films or similar materials.
- Do not allow cosmetics, insect repellent or sun cream to come in contact with the plastic trim.

Real wood and trim elements

- Clean with a microfiber cloth.
- Black piano-lacquer look: clean with a damp cloth and soapy water.
- For heavy soiling: use a cleaner recommended for Mercedes-Benz.
- Do not use solvent-based cleaning agents, polishes or waxes.

Headliner

- Clean with a brush or dry shampoo.

Carpet

- Use a carpet and textile cleaning agent recommended for Mercedes-Benz.

Steering wheel made of genuine leather or DINAMICA

- Clean with a damp cloth and 1% soapy water solution and then wipe with a dry cloth.

- For heavy soiling: use a cleaner recommended for Mercedes-Benz.
- Leather care: use a leather care agent that has been recommended for Mercedes-Benz.
- Do not allow the leather to become too damp.
- Do not use a microfiber cloth.

Leather is a natural product. It has natural surface properties, such as differences in structure, marks caused by growth and injury or subtle color differences.

- Genuine leather seat covers
- Clean with a damp cloth and then wipe with a dry cloth.
- Leather care: use a leather care agent that has been recommended for Mercedes-Benz.
- Do not allow the leather to become too damp.
- Do not use a microfiber cloth.

DINAMICA seat covers

- Clean with a damp cloth.
- Do not use a microfiber cloth.

Imitation leather seat covers

- Clean with a damp cloth and 1% soapy water.
- Do not use a microfiber cloth.

Warning

This content is compiled from multiple sources and is provided for reference purposes only. It may not be complete or fully applicable to all situations. If you are unable to resolve your issue, please contact the product manufacturer or an authorized service provider for official support.