

USING THE MONITOR

Using the Input List

1. Press to access the Input List.
2. Press the navigation buttons to scroll to one of the input mode and press .
 - RGB-PC
 - HDMI
 - HDMI2
 - DVI-D
 - USB
 - Display Port
 - OPS

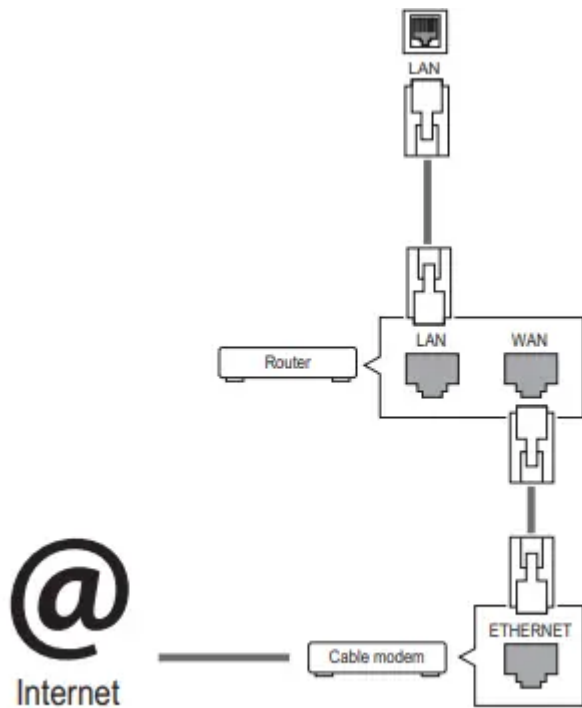
ENTERTAINMENT

Using the Network

Connecting to a Network

For wired network connections, connect the display to a local area network (LAN) via the LAN port as shown on the following diagram. Then, set up the network settings. For wireless network connections, connect the Wi-Fi USB module to the USB port. Then, set up the network settings.

After making a physical connection, a small number of home networks may require the display network settings to be adjusted. For most home networks, the display will connect to automatically without any adjustments. For detail information, contact your internet provider or router manual.



Connecting to a wired network

1. Press **SETTING** to access the main menus.
2. Press the navigation buttons to scroll to **NETWORK** and press **OK** .
3. Press the navigation buttons to select **Network Setting** and press **OK**.
4. If you already set network setting, select **Resetting**. The new connection settings resets the current network settings.

5. Select **IP Auto Setting** or **IP Manual Setting**.

- IP Manual Setting

press the navigation and number buttons. IP addresses will need to be input manually.

- IP Auto Setting

Select this if there is a DHCP server (Router) on the local area network (LAN) via wired connection, the display will automatically be allocated an IP address. If you're using a broadband router or broadband modem that has a DHCP (Dynamic Host Configuration Protocol) server function. The IP address will automatically be determined.

6. When you are finished, press **EXIT** .

Connecting to a wireless network

1. Press **SETTING** to access the main menus.
2. Press the navigation buttons to scroll to **NETWORK** and press **OK**.
3. Press the navigation buttons to select **Network Setting** and press **OK**.
4. Select Setting from the **AP list** or **Simple setting (WPS-button mode)**.

- Setting from the AP list

Select an AP to connect to a wireless network.

- Simple setting (WPS-button mode)

Press the button on the wireless router that supports PBC to easily connect to the router.

5. When you are finished, press EXIT.

CAUTION

- Network setting menu will not be available until the display connected to physical network.
- Since there are various connection methods, please follow the specifications of your telecommunication carrier or internet service provider.
- When a Wi-Fi dongle is used with a model that has only one USB input port, the distribution or content schedule via the SuperSign software is not available.

NOTE

- If you want to access the Internet directly on your display, the Internet connection should always be on.
- If you cannot access the Internet, check the network conditions from a PC on your network.
- When you use Network Setting, check the LAN cable or check if DHCP in the router is turned on.
- If you do not complete the network settings, the network may not work properly.
- When connected to a network that supports IPv6, you can select IPv4/IPv6 in the advanced wired/wireless network setting. But, IPv6 connection only supports automatic connection

Tips for Network setting

- Use a standard LAN cable with this display. Cat5 or better with a RJ45 connector.
- Many network connection problems during set up can often be fixed by re-setting the router or modem. After connecting the display to the home network, quickly power off and/or disconnect the power cable of the home network router or cable modem. Then power on and/or connect the power cable again.
- Depending on the internet service provider (ISP), the number of devices that can receive internet service may be limited by the applicable terms of service. For details, contact your ISP.
- LG is not responsible for any malfunction of the display and/or the internet connection feature due to communication errors/malfunctions associated with your internet connection, or other connected equipment.
- LG is not responsible for problems within your internet connection.
- You may experience undesired results if the network connection speed does not meet the requirements of the content being accessed.

- Some internet connection operations may not be possible due to certain restrictions set by the Internet service provider (ISP) supplying your Internet connection.
- Any fees charged by an ISP including, without limitation, connection charges are your responsibility.
- A 10 Base-T or 100 Base-TX LAN port is required when using a wired connection to this display. If your internet service does not allow for such a connection, you will not be able to connect the display.
- A DSL modem is required to use DSL service and a cable modem is required to use cable modem service. Depending on the access method of and subscriber agreement with your ISP, you may not be able to use the internet connection feature contained in this display or you may be limited to the number of devices you can connect at the same time. (If your ISP limits subscription to one device, this display may not be allowed to connect when a PC is already connected.)
- The use of a router may not be allowed or its usage may be limited depending on the policies and restrictions of your ISP. For details, contact your ISP directly.

Tips for Wireless Network Setting

- Wireless networks can be subject to interference from other devices operating at a frequency of 2.4 GHz (wireless phones, Bluetooth devices, or microwave ovens). There may also be interference from devices with a frequency of 5 GHz, same as other Wi-Fi devices.
- The surrounding wireless environment can cause the wireless network service to run slowly.
- For an AP connection, an access point device that supports wireless connection is required and the wireless connection feature must be enabled on the device. Contact your service provider regarding availability of wireless connection on your access point.
- Check the SSID and security settings of the AP for AP connection. Refer to the appropriate documentation for SSID and security settings of the AP.
- Invalid settings on network devices (wired/wireless line sharer, hub) can cause the monitor to run slowly or not operate properly. Install the devices correctly according to the appropriate manual and set the network.
- Connection method may differ according to the AP manufacturer

Network Status

1. Press **SETTING** to access the main menus.
2. Press the navigation buttons to scroll to **NETWORK** and press .
3. Press the navigation buttons to select **Network Status**.
4. Press **OK** to check the network status.

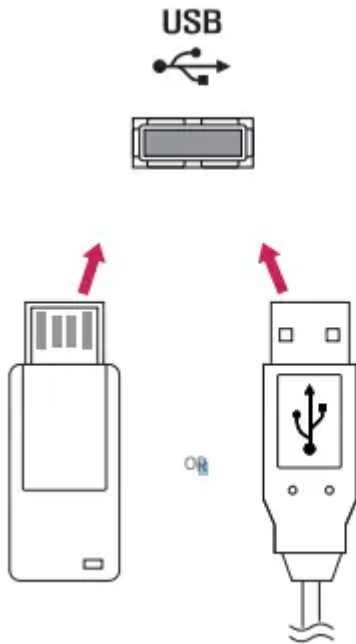
5. When you are finished, press **EXIT**

Using the My Media

Connecting USB storage devices

Connect USB storage devices such as a USB flash memory, external hard drive to the display and use multimedia features.

Connect a USB flash memory or USB memory card reader to the Display as shown on the following illustration. The My Media screen appears



CAUTION

- Do not turn the display off or remove a USB storage device while MY MEDIA menu is activated, as this could result in loss of files or damage to the USB storage device.
- Back up your files saved on a USB storage device frequently, as you may lose or damage the files and this may be not covered by the warranty

Tips for using USB storage devices

- Only a USB storage device is recognizable.
- If the USB storage device is connected through a USB hub, the device is not recognizable.
- A USB storage device using an automatic recognition program may not be recognized.
- A USB storage device which uses its own driver will not be recognized.
- The recognition speed of a USB storage device may depend on each device.

- Please do not turn off the display or unplug the USB device when the connected USB storage device is working. When such a device is suddenly separated or unplugged, the stored files or the USB storage device may be damaged.
- Please do not connect the USB storage device which was artificially maneuvered on the PC. The device may cause the product to malfunction. Only use a USB storage device which has normal music files, image files or movie files.
- Please only use USB storage devices formatted using the FAT32 file system. Storage devices formatted with utility programs that are not supported by Windows may not be recognized.
- Please connect power to a USB storage device (over 0.5 A) which requires an external power supply. If not, the device may not be recognized.
- Please connect a USB storage device with the cable included by the device maker.
- Some USB storage devices may not be supported or operate smoothly.
- File alignment method of USB storage devices is similar to Window XP and the monitor can recognize up to 100 English characters.
- Be sure to back up important files since data stored on a USB memory device may be damaged. We will not be responsible for any data loss.
- If the USB HDD does not have an external power source, the USB device may not be detected. So be sure to connect the external power source. - Please use a power adaptor for an external power source.
- If your USB memory device has multiple partitions, or if you use a USB multi-card reader, you can use up to 4 partitions or USB memory devices.
- If a USB memory device is connected to a USB multi-card reader, its volume data may not be detected.
- If the USB memory device does not work properly, disconnect and reconnect it.
- How fast a USB memory device is detected differs from device to device.
- If the USB is connected in Standby Mode, that drive will automatically be loaded when the display is turned on.
- The recommended capacity is 1 TB or less for a USB external hard disk and 32 GB or less for USB memory.
- Any device with more than the recommended capacity may not work properly.
- If a USB external hard disk with a Energy Saving function does not work, turn the hard disk off and on again to make it work properly.
- USB storage devices below USB 2.0 are supported as well. But they may not work properly with videos.
- A maximum of 999 folders or files can be recognized under one folder.

- A USB 3.0 storage device may not work.
- Data on some USB storage devices may be damaged in a high temperature environment.
- It is recommended that you avoid playing contents using more than two USB ports simultaneously

Browsing Files

1. Browse files saved in a USB storage device.
2. Press **SETTING** to access the main menu.
3. Press the search button to **MY MEDIA** scroll to and press **OK**.
4. Press the Search button to go to the **Movie List, Photo List, Music List, or Content List** that you want, and press **OK**

Viewing Movies

Plays movie files saved in the USB storage device.

1. Press **SETTING** to access the main menu.
2. Press the navigation button to scroll to **MY MEDIA** and press **OK**.
3. Press the navigation button to scroll to **Movie List** and press **OK**.
4. Press the navigation buttons to scroll to a folder you want and press .
5. Press the navigation buttons to scroll to a file you want and press .
 - **Change Device** : Selects the USB storage device. (Depending on model)
 - **Go to root folder** : Returns to the home screen of My Media.
 - **Go to upper folder** : Returns to the previous screen.
 - **Exit** : Exits My Media.
6. During movie playback, press **OK** to access the following settings.

Tips for using playing video files

- Some user-created subtitles may not work properly.
- Some special characters are not supported in subtitles.
- HTML tags are not supported in subtitles.
- Subtitles in languages other than the supported languages are not available.
- The screen may suffer temporary interruptions (image stoppage, faster playback, etc.) when the audio language is changed.
- A damaged movie file may not be played correctly, or some player functions may not be usable.
- Movie files produced with some encoders may not be played correctly.

- If the video and audio structure of recorded file is not interleaved, either video or audio is outputted.
- HD videos with a maximum of 1920 x 1080 @ 25/30p or 1280 x 720 @ 50/60p are supported, depending on the frame.
- Videos with resolutions higher than 1920 x 1080 @ 25/30p or 1280 x 720 @ 50/60p may not work properly depending on the frame.
- Movie files other than the specified types and formats may not work properly.
- Max bitrate of playable movie file is 20 Mbps. (only, Motion JPEG : 10 Mbps)
- We do not guarantee smooth playback of profiles encoded level 4.1 or higher in H.264/AVC.
- DTS Audio codec is not supported.
- A movie file more than 30 GB in file size is not supported for playback.
- A DivX movie file and its subtitle file must be located in the same folder.
- A video file name and its subtitle file name must be identical for it to be displayed.
- Playing a video via a USB connection that doesn't support high speed may not work properly.
- Files encoded with GMC(Global Motion Compensation) may not be played.

Video options

1. Press **SETTING** to access the Pop-Up menus.
2. Press the navigation buttons to scroll to **Set Video Play, Set Video, or Set Audio**, and press **OK** .

NOTE

- The option values changed in **Movie List** do not affect **Photo List** or **Music List**. Therefore, they are not affected by option values changed in **Photo List** or **Music List**.
- The option values changed in **Photo List** and **Music List** do affect each other.
- When replaying the video file after stopping, you can play from where it stopped previously

Viewing Photos

View image files saved in the USB storage device.

1. Press **SETTING** to access the main menu.
 2. Press the navigation button to scroll to **MY MEDIA** and press **OK**.
 3. Press the navigation button to scroll to **Photo List** and press **OK**.
 4. Press the navigation buttons to scroll to a folder you want and press **OK**.
 5. Press the navigation buttons to scroll to a file you want and press **OK**.
- **Change Device** : Selects the USB storage device. (Depending on model)

- **Go to root folder** : Returns to the home screen of My Media.
 - **Go to upper folder** : Returns to the previous screen.
 - **Exit** : Exits My Media.
6. While viewing photos, you can access the following settings.

Photo options

1. Press **SETTING** to show the Option menus.
2. Press the navigation buttons to scroll to **Set Photo View, Set Video, or Set Audio**, and press **OK**.

NOTE

- The option values changed in Movie List do not affect Photo List or Music List. Therefore, they are not affected by option values changed in Photo List or Music List.
- The option values changed in Photo List and Music List do affect each other.

Listening to Music

Plays music files saved in the USB storage device.

1. Press **SETTING** to access the main menu.
 2. Press the navigation button to scroll to **MY MEDIA** and press **OK**.
 3. Press the navigation button to scroll to **Music List** and press **OK**.
 4. Press the navigation buttons to scroll to a folder you want and press **OK**.
 5. Press the navigation buttons to scroll to a file you want and press **OK**.
- **Change Device** : Selects the USB storage device. (Depending on model)
 - **Go to root folder** : Returns to the home screen of My Media.
 - **Open Music Player** : Opens the settings window for music. This feature is activated only during playback.
 - **Go to upper folder** : Returns to the previous screen.
- Exit** : Exits My Media.
6. During music playback, press **OK** to access the following settings.

Viewing the Contents List

You can play the files saved using the Export function to an external file in the SuperSign Software.

1. Press **SETTING** to access the main menu.
 2. Press the navigation button to scroll to **MY MEDIA** and press **OK**.
 3. Press the navigation button to scroll to **Contents List** and press **OK**.
 4. Press the navigation buttons to scroll to a folder you want and press **OK**.
 5. Press the navigation buttons to scroll to a file you want and press **OK**.
- **Change Device** : Selects the USB storage device. (Depending on model)
 - **Go to root folder** : Returns to the home screen of My Media.
 - **Go to upper folder** : Returns to the previous screen.

- **Exit** : Exits My Media.

NOTE

- While playing media files from **Contents List**, only the **BACK** , **EXIT** or volume button are available. Selecting the **BACK** , **EXIT** or button stops playing media files and returns to the Contents List.
- When you use the distribution feature which utilizes SuperSign Software, the storage device used to store contents is determined based on the size of the remaining memory space. (Note: If USB ports 1 and 2 have the same memory space, contents will be saved on the storage device connected to USB port 1.(Depending on model))
- If there is the **AutoPlay** folder in the USB device and its files are in supported formats, they can be played back automatically when the USB device is connected to the monitor.
- It is recommended that you avoid playing contents using more than two USB ports simultaneously.
- With respect to the playback of distribution or contents schedules through SuperSign Software, the schedule executed last time is played.

CUSTOMIZING SETTINGS

Accessing Main Menus

1. Press **SETTING** to access the main menus.
2. Press the navigation buttons to scroll to one of the following menus and press **OK**.
3. Press the navigation buttons to scroll to the setting or option you want and press **OK**.
4. When you are finished, press **EXIT** . When you return to the previous menu, press **BACK**.
 - **PICTURE** : Adjusts the image size, quality, or effect.
 - **AUDIO** : Adjusts the sound quality, effect, or volume level.
 - **TIME** : Sets the time, date, or timer feature.
 - **OPTION** : Customizes the general settings.
 - **NETWORK** : Sets up the network setting.
 - **MY MEDIA** : Display and play movie, photo and music contents stored on your USB or signage device (Internal storage device).

PICTURE Settings

1. Press **SETTING** to access the main menus.
2. Press the navigation buttons to scroll to **PICTURE** and press **OK**.
3. Press the navigation buttons to scroll to the setting or option you want and press **OK**.
 - To return to the previous level, press **BACK**.
4. When you are finished, press **EXIT**. When you return to the previous menu, press **BACK** .

AUDIO Settings

1. Press **SETTING** to access the main menus.
2. Press the navigation buttons to **AUDIO** scroll to and press **OK**.
3. Press the navigation buttons to scroll to the setting or option you want and press .
- To return to the previous level, press **BACK**.
4. When you are finished, press **EXIT**. When you return to the previous menu, press **BACK** .

TIME Settings

1. Press **SETTING** to access the main menus.
2. Press the navigation buttons to scroll to **TIME** and press **OK**.
3. Press the navigation buttons to scroll to the setting or option you want and press **OK**.
- To return to the previous level, press **BACK** .
4. When you are finished, press **EXIT**.
When you return to the previous menu, press **BACK**.

OPTION Settings

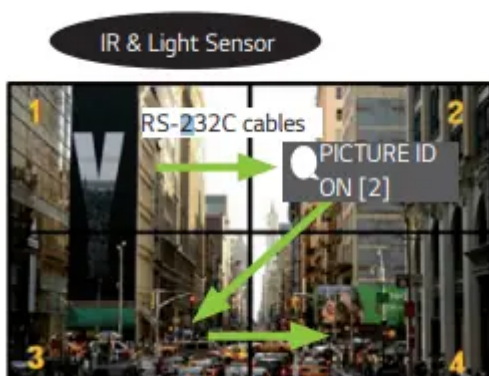
1. Press **SETTING** to access the main menus.
2. Press the navigation buttons to scroll to **OPTION** and press **OK** .
3. Press the navigation buttons to scroll to the setting or option you want and press **OK**.
- To return to the previous level, press **BACK**.
4. When you are finished, press **EXIT**.
When you return to the previous menu, press **BACK**.

PICTURE ID Settings

- Only applies to certain models.

PICTURE ID is used to change the settings of a specific set (display) using a single IR receiver for multi-vision. Communication is possible between a monitor with an IR receiver and other monitors using RS-232C cables. Each monitor is identified by a **Set ID**. If you assign the using the remote control, only displays with matching and **Set ID** can be controlled remotely.

1. Assign the **Set ID** to the installed monitors as shown below.



2. Press the red **ON** button on the remote control to assign the **PICTURE ID**.

3. Assign the **Set ID** to the selection of your choice.

- A set with a different Set ID from the PICTURE ID cannot be controlled by IR signals.

NOTE

- If **PICTURE ID** is set to 2, only the upper right monitor, which has a Set ID of 2, can be controlled by IR signals.
- If you press the green **OFF** button for **PICTURE ID**, the PICTURE IDs for all monitors are turned off. If you then press any button on the remote control, all monitors can be controlled by IR signals regardless of **Set ID**.

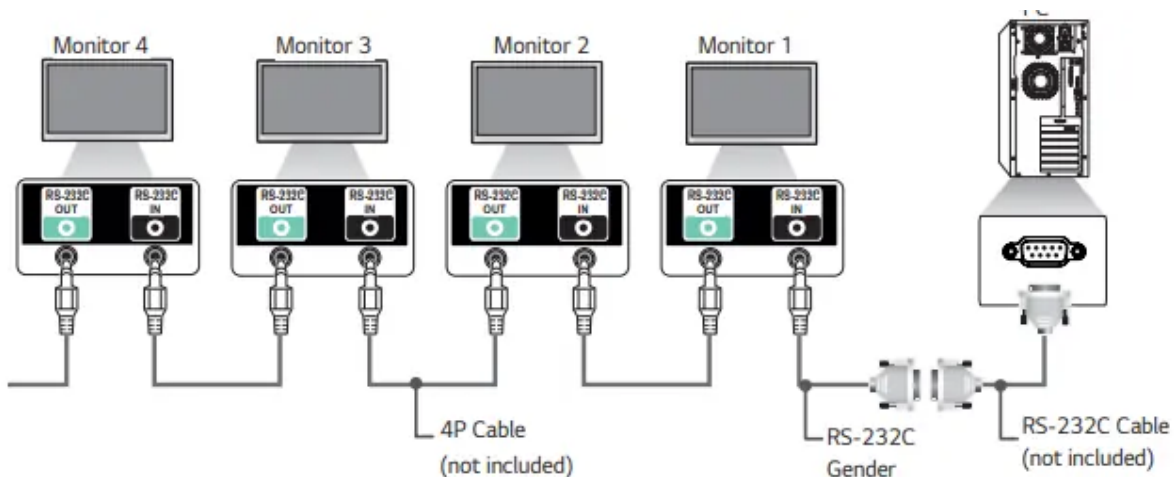
TO CONTROL MULTIPLE PRODUCTS

- Use this method to connect several products to a single PC. You can control several products at a time by connecting them to a single PC.
- In the Option menu, Set ID must be between 1 and 255 (or from 1 to 1,000) without being duplicated.

Connecting the Cable

Connect the RS-232C cable as shown in the picture.

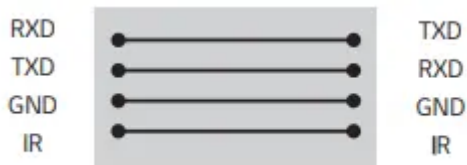
- The RS-232C protocol is used for communication between the PC and product. You can turn the product on or off, select an input source or adjust the OSD menu from your PC.



RS-232C Configurations

4P Cable

- 4 Wire Configurations (Standard RS-232C cable)

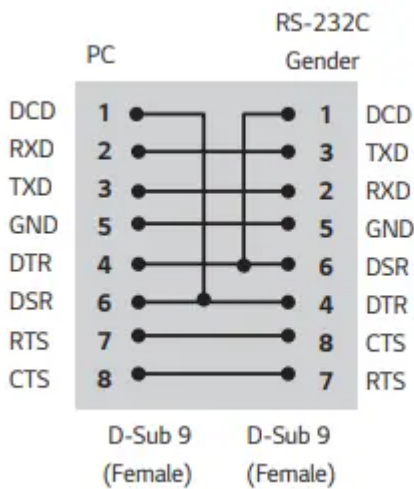


NOTE

- When using three-wire connections (non-standard), an IR daisy chain cannot be used.
- If you want to control multiple units simultaneously, use 3.5 mm 4-pole cables (sold separately)

RS-232C Cable

- 8-Wire Configurations (Standard RS-232C cable)



Warning

This content is compiled from multiple sources and is provided for reference purposes only. It may not be complete or fully applicable to all situations. If you are unable to resolve your issue, please contact the product manufacturer or an authorized service provider for official support.

