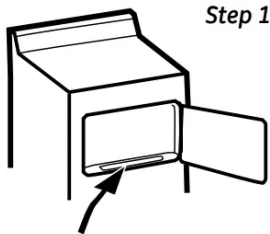
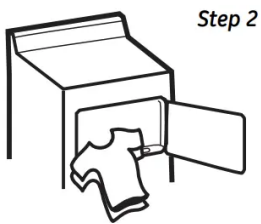


Table of contents

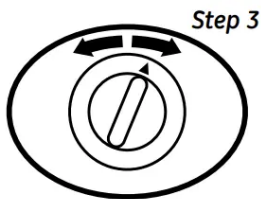
About the control panel



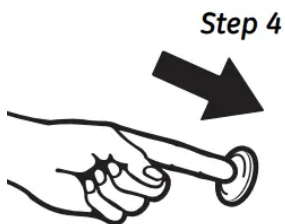
- Clean lint filter.



- Add clothes
- Shut door



- Select drying cycle



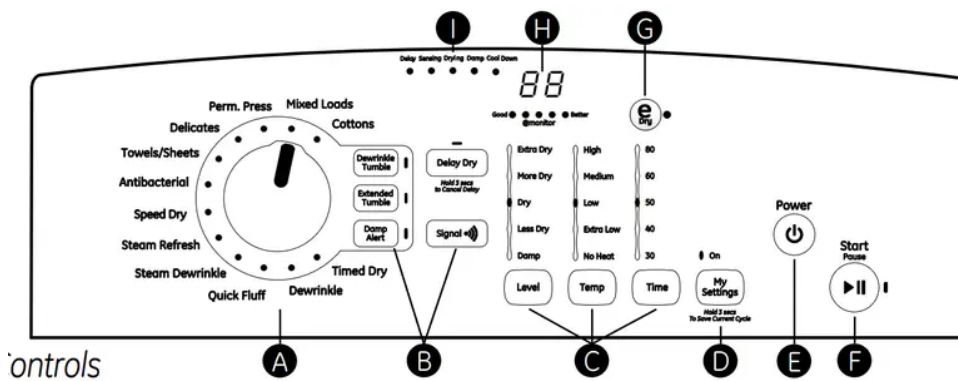
- Push Start

Quick Start Guide

⚠WARNING!

To reduce the risk of fire, electric shock, or injury to persons, read the IMPORTANT SAFETY INSTRUCTIONS before operating this appliance.

Throughout this manual, features and appearance may vary from your model.



A

Drying Cycles-Sensor cycles automatically determine fabric dryness.

Timed cycles run for the selected time.

Cottons For cottons and most linens.

Perm. Press For wrinkle-free, permanent press, delicate items and knits.

Delicates For delicate items, special-care fabrics and knits.

Mixed Loads For loads consisting of cottons and poly-blends.

Timed Dry Set the Cycle Selector at the desired drying time.

Dewrinkle— For removing wrinkles from items that are clean and dry or that are very lightly damp.

Quick Fluff— For freshening or fluffing up already dry clothing, fabric, linens and pillows. Use with No Heat.

Provides 10 minutes of no-heat tumbling.

Anti-Bacterial This option reduces certain types of bacteria by 99.9%, including: Staphylococcus aureus, Pseudomonas aeruginosa and Klebsiella pneumoniae*. The anti-bacterial process occurs when high heat is used during a portion of the drying cycle.

NOTE: Do not use this cycle on delicate fabrics.

*The Anti-Bacterial Cycle is Certified by NSF International (formerly National Sanitation Foundation) to NSF Protocol P154 Sanitization Performance of Residential Clothes Dryers.

Towels/Sheets — For most towels and linens.

Speed Dry — For small loads that are needed in a hurry, such as sport or school uniforms. Can also be used if the previous cycle left some items damp, such as collars or waistbands.

NOTE: On some models, the time remaining in the cycle will show counting down in the display.



Energy Saver — For cottons and most linens. The cycle offers a reduction in energy use when compared to the Cottons cycle. The dryer automatically sets the most energy efficient settings and only changes to the Dryness Level are allowed by the user.

Steam Refresh — For slightly wrinkled dry garments. Significantly reduces wrinkles. After the Steam Refresh cycle. (on some models) the unit will beep (if Signal is selected) and display “00.”

Steam Refresh is recommended for 1-2 garments

NOTE: Steam cycles are not intended for use with towels.

NOTE: A single extremely light fabric item may need to have an additional item included in the Steam Refresh cycle to achieve optimum results.

Important - the temperature setting must be set to HIGH and water must be turned on before running the Steam Refresh cycle.

Steam Dewrinkle (on some models)

For use with larger loads than Steam Refresh. Ideal for loads left in the dryer for an extended time.

Steam Dewrinkle is recommended for 8-13 garments

NOTE: Steam cycles are not intended for use with towels.

Important - the temperature setting must be set to HIGH and water must be turned on before running the Steam Refresh cycle.

B Options

Dewrinkle Tumble

Use this option to minimize the wrinkles in clothes. It provides 30 minutes of no-heat tumbling after the clothes are dry. If you are using the cycle Signal and you select the Dewrinkle Tumble option, a signal will sound at the end of the drying time and several times during the Dewrinkle Tumble cycle. This will remind you that it is time to remove the clothes.

Extended Tumble

Use this option to minimize the wrinkles in clothes. It provides 1 hour of no-heat tumbling after the clothes are dry. If you are using the cycle Signal and you select the Extended Tumble option, a signal will sound at the end of the drying time and several times during the Extended Tumble cycle. This will remind you that it is time to remove the clothes.

Damp Alert

This option causes the dryer to beep when clothes have dried to a damp level. Remove items that you wish to hang dry. The Damp Alert will only beep when this option is selected (but the dry cycle will keep running). Removing clothes and hanging them when they are damp, can reduce the need to iron some items. The light beside the pad will be lit when Damp Alert is on.

Delay Dry

On models with a Time Remaining display, as the Delay Dry pad is repeatedly pressed, the delay time sets to 30 minutes, 1 hour, 2 hours, 4 hours, 8 hours, and back to clear (0 minutes). After selecting the delay time, press Start and the delay time will count down the time remaining until the cycle starts.

On models without a Time Remaining display, as the Delay Dry pad is repeatedly pressed, the delay time sets to 2 hours, 4 hours, 8 hours, and back to clear (0 hours).

For all models, if the Delay Dry pad is pressed for 3 seconds, it clears (regardless of the delay time).

Signal

Use the Signal pad to change the volume of the end of cycle signal. Press the pad until you reach the desired volume or off.

The clothes should be removed when the beeper goes off so wrinkles do not set in.

NOTE:

+ Remove garments promptly at the sound of signal. Place clothes on hangers so wrinkles will not set in.

+ Use the Signal especially when drying fabrics like polyester, knits and permanent press. These fabrics should be removed so wrinkles will not set in.



Settings

Individual settings for dryness level (Level), temperature (Temp), and Timed Dry cycle minutes (Time) can be set from the minimum (lowest in column) to maximum (highest in column). In general, the higher up the column, the more energy will be used.

Dryness Level-Selection only used for Sensor cycles. Timed cycles run for the selected time.

Extra Dry —_ Use for heavy-duty fabrics or items that should be very dry, such as towels.

More Dry — Use for heavy-duty or mixed type fabrics.

Dry — Use for anormal dryness level suitable for most loads. This is the preferred cycle for energy savings.

Less Dry — Use for lighter fabrics.

Damp _ For leaving items partially damp.

Temperature

High — For regular to heavy cottons. **NOTE:** Steam Dewrinkle and Steam Refresh require the High temperature setting.

Medium — For synthetics, blends, delicates and items labeled permanent press.

Low _ For delicates, synthetics and items labeled tumble dry low.

Extra Low _ For delicates, synthetics and items labeled tumble dry low.

No Heat For fluffing items without heat. For use only with the Timed Dry cycles.

D My Settings (on some models)

As the cycle selector knob is turned, the Level (Dryness Level), Temp (Temperature) and Time (Timed Dry) settings change to automatic pre-set default settings. If you desire a different setting, press the appropriate pad(s). Then press and hold the My Settings pad for 3 seconds and the dryer will “remember” these settings for that Knob Selection. In the future, when you turn the selector knob to that cycle, your settings will be automatically recalled. **NOTE:** Signal volume cannot be set for My Settings.

E Power

Press to “wake up” the display. If the display is active, press to put the dryer into idle mode.

NOTE: Pressing Power does not disconnect the appliance from the power supply.

F Start

Press Start to begin the cycle. **NOTE:** The door must be closed for the dryer to start the cycle. Pressing Start again will Pause the cycle and the cycle Indicator Light will blink.

To continue the cycle, press Start again. To stop the cycle, hold the pad for 3 seconds.

G eDry (on some models)

When the eDry pad is pressed, cycle settings change to reduce the total energy consumption of the selected sensor cycle.

NOTE: Cycle times will change when eDry is selected.

H Display (on some models)

The display shows the approximate time remaining until the end of the cycle.

In addition, this display will “scroll” the dryer status:

+ PAUSE The message “PAUSE” will scroll across the display when the dryer’s cycle is paused. The cycle may be re-started by pressing the Start pad.

+ door The message “door” will be displayed when the door is opened during the dryer’s cycle.

The eMonitor lights display the relative energy use of your selected cycle and options. They are provided as an energy guide and range from Good (1 light) to Better (5 lights). Cycle (time), dryness level, temperature, and additional tumble options can increase or decrease your energy efficiency. Some special cycles will not provide a display.

I Indicator lights

Five LED lights indicate the current dryer status moving from left to right as the cycle progresses.

DSM Demand Side Management (on some models) - When connected to your power company's rate monitoring system, the dryer will automatically delay starting if the rates are high/critical. An "ES" will be displayed and the selected cycle will start after 4 hours or when the rates drop to low/medium, whichever comes first. If the rates are not high/critical, the selected cycle will start immediately.

About the dryer features.

Sensor Dry

Sensor Dry (on some models)

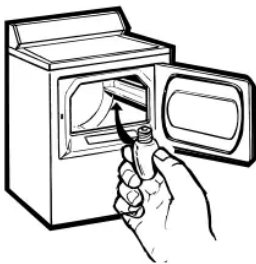
This feature is only activated in the Cottons, Easy Care and Delicates cycles.

This feature is only activated in the Cottons, Easy Care and Delicates cycles.

The Sensor Dry provides greater drying accuracy than standard machines, resulting in shorter dry times and better clothes care. As the clothes tumble, they touch a moisture sensor. The sensor will stop the heating cycle as soon as the clothes have reached the selected dryness.

This dryer will adjust the initial estimated drying time of the sensor dry cycles as it "learns" its installation and usage profile. Please allow several weeks for the dryer to customize itself to "you".

Drum Lamp



Before replacing the light bulb, be sure to unplug the dryer power cord or disconnect the dryer at the household distribution panel by removing the fuse or switching off the circuit breaker. Reach above dryer opening from inside the drum. Remove the bulb and replace with the same size bulb.

Drying Rack (on some models)



A handy drying rack may be used for drying delicate items such as washable sweaters. Hook the rack over the lint filter so the rack extends into the dryer drum.

NOTE:

- + The drying rack must be used with the Timed Cycle.
- + Do not use this drying rack when there are other clothes in the dryer.

Stainless Steel Drum (on some models)

The stainless steel used to make the dryer drum provides the highest reliability available in a GE dryer. If the dryer drum should be scratched or dented during normal use, the drum will not rust or corrode. These surface blemishes will not affect the function or durability of the drum.

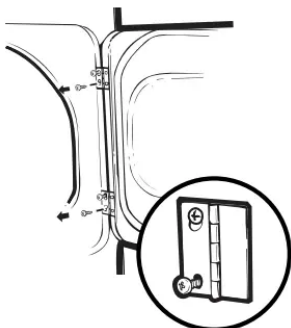
About reversing the door.

Reversing the Door

Tools needed:

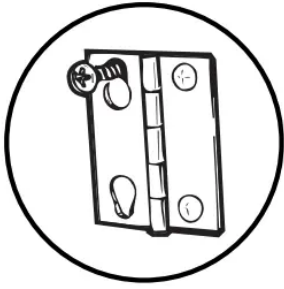
- + Standard #2 Phillips screwdriver
- + Tape-tipped putty knife

1. Open the door and remove the filler plugs opposite the hinges. With the door completely open, remove the bottom screw from each hinge on the dryer face. Insert these screws about half way into the TOP holes. for each hinge. on the opposite side (where you removed the filler plugs). Apply firm pressure to get the screw started in new holes.

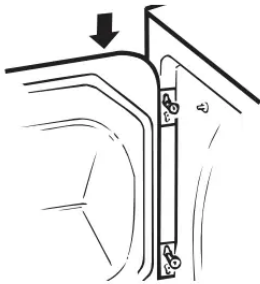


2. Loosen top screw from each hinge on the dryer face half way. With one hand holding the top of the door and the other hand holding the bottom. remove the door from the dryer by lifting it UP and OUT.

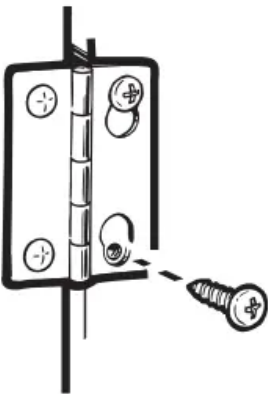




3. Rotate the door 180° Insert it on the opposite side of the opening by moving the door IN and DOWN until the top hinge and the bottom hinge are resting on the top screws inserted in step 1.



4. Remove the remaining screws from the side of the opening from which the door was removed. With these screws, secure each hinge at the bottom. Tighten the two top screws of each hinge. Reinsert the plastic plugs on the side from which the door was removed.



About loading and using the dryer.

Always follow the fabric manufacturer's care label when laundering.



Sorting and Loading Hints

As a general rule, if clothes are sorted properly for the washer, they are sorted properly for the dryer.

Do not add fabric softener sheets once the load has become warm. They may cause fabric softener stains. Bounce Fabric Conditioner Dryer Sheets have been approved for use in all GE Dryers when used in accordance with the manufacturer's instructions.

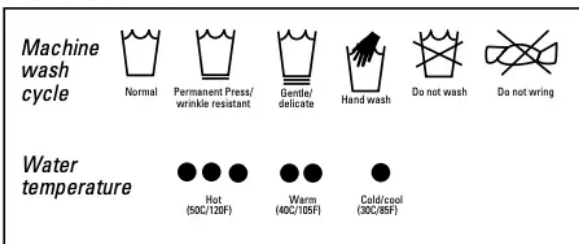
- Do not overload. This wastes energy and causes wrinkling.
- Do not dry the following items: fiberglass items. woolens. rubber-coated items. plastics. items with plastic trim and foam-filled items.



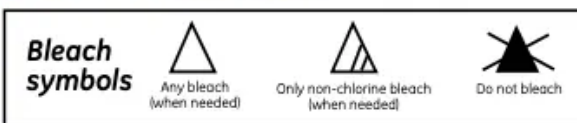
Fabric Care Labels

Below are fabric care label “symbols” that affect the clothing you will be laundering.

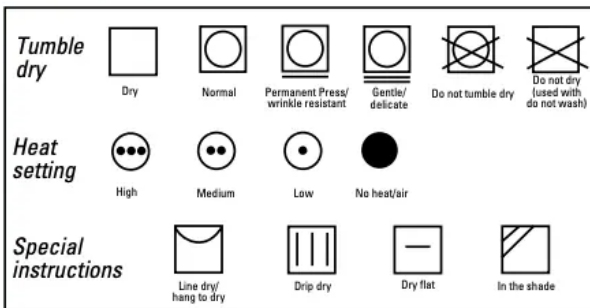
WASH LABELS



BLEACH LABELS



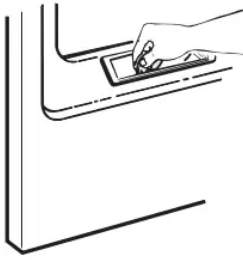
DRY LABELS



Care and Cleaning of the Dryer

The Exterior: Wipe or dust any spills or washing compounds with a damp cloth. Dryer control panel and finishes may be damaged by some laundry pretreatment soil and stain remover products. Apply these products away from the dryer. The fabric may then be washed and dried normally. Damage to your dryer caused by these products is not covered by your warranty.

The Lint Filter: Clean the lint filter before each use. Moisten your fingers and reach into the filter opening. Run your fingers across the filter. Have a qualified technician vacuum the lint from the dryer once a year.



Stainless Steel: To clean stainless steel surfaces, use a damp cloth with a mild, non-abrasive cleaner suitable for stainless steel surfaces. Remove the cleaner residue, and then dry with a clean cloth.

The Exhaust Duct: Inspect and clean the exhaust ducting at least once a year to prevent clogging. A partially clogged exhaust can lengthen the drying time.

Follow these steps:

- 1) Turn off electrical supply by disconnecting the plug from the wall socket.
- 2) Disconnect the duct from the dryer.
- 3) Vacuum the duct with the hose attachment and reconnect the duct.

The Exhaust Hood: Check from the outside that the flaps of the hood move freely when operating. Make sure that there is not wildlife (birds, insects, etc.) nesting inside the duct or hood.

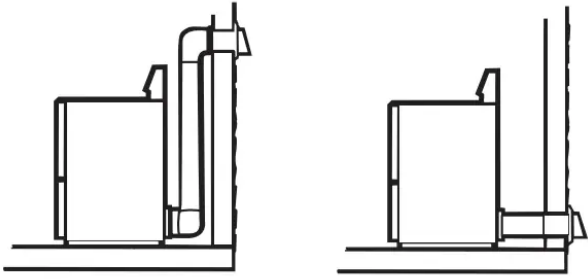
About venting the dryer.

For the best drying performance, the dryer needs to be properly vented. The dryer will use more energy and run longer if it is not vented to the below specifications.

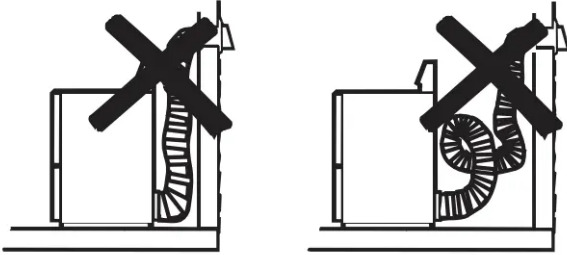
Carefully follow the details on Exhausting in the Installation Instructions.

- + Use only rigid metal 4" diameter ductwork inside the dryer cabinet. Use only rigid metal or UL listed flexible metal 4" diameter ductwork for exhausting to the outside.
- + Do not use plastic or other combustible ductwork.
- + Use the shortest length possible.
- + Do not crush or collapse.
- + Avoid resting the duct on sharp objects.
- + Venting must conform to local building codes.

Correct Venting



Incorrect Venting



Before you call for service



Troubleshooting Tips

Save time and money! Review the charts on the following pages. You may not need to call for service.

Problem	Possible Causes	What To Do
Dryer doesn't start	Dryer is unplugged	<ul style="list-style-type: none"> • Make sure the dryer plug is pushed completely into the outlet.
	Fuse is blown/circuit breaker is tripped	<ul style="list-style-type: none"> • Check the house fuse/circuit breaker box and replace fuse or reset breaker. NOTE: Most electric dryers use two fuses/breakers.
Dryer doesn't heat	Fuse is blown/circuit breaker is tripped; the dryer may tumble but not heat	<ul style="list-style-type: none"> • Check the house fuse/circuit breaker box and replace both fuses or reset both breakers. Your dryer may tumble if only one fuse is blown or one breaker is tripped.
	Gas service is off	<ul style="list-style-type: none"> • Make sure gas shutoff at dryer and main shutoff are fully open.
	No heat temperature selected	<ul style="list-style-type: none"> • Select another heat setting.
Dryer shakes or makes noise	Some shaking/noise is normal. Dryer may be sitting unevenly	<ul style="list-style-type: none"> • Move dryer to an even floor space, or adjust leveling legs as necessary until even.
Greasy spots on clothes	Improper use of fabric softener	<ul style="list-style-type: none"> • Follow directions on fabric softener package.
	Drying dirty items with clean ones	<ul style="list-style-type: none"> • Use your dryer to dry only clean items. Dirty items can stain clean items and the dryer.
	Clothes were not completely clean	<ul style="list-style-type: none"> • Sometimes stains which cannot be seen when the clothes are wet appear after drying. Use proper washing procedures before drying.
Lint on clothes	Lint filter is full	<ul style="list-style-type: none"> • Clean lint screen before each load.
	Improper sorting	<ul style="list-style-type: none"> • Sort lint producers (like chenille) from lint collectors (like corduroy).
	Static electricity can attract lint	<ul style="list-style-type: none"> • See suggestions in this section under Static.
	Overloading	<ul style="list-style-type: none"> • Separate large loads into smaller ones.
	Paper, tissue, etc., left in pockets	<ul style="list-style-type: none"> • Empty all pockets before laundering clothes.
Static occurs	No fabric softener was used	<ul style="list-style-type: none"> • Try a fabric softener. • Bounce® Fabric Conditioner Dryer Sheets have been approved for use in all GE Dryers when used in accordance with the manufacturer's instructions.
	Over-drying	<ul style="list-style-type: none"> • Try a fabric softener. • Adjust setting to Less Dry or Damp Dry.
	Synthetics, permanent press and blends can cause static	<ul style="list-style-type: none"> • Try a fabric softener.
Inconsistent drying times	Type of heat	<ul style="list-style-type: none"> • Automatic drying times will vary according to the type of heat used (electric, natural or LP gas), size of load, types of fabrics, wetness of clothes and condition of exhaust ducts.
The Dry dryness level was chosen but load is still damp	Load consists of a mixture of heavy and light fabrics	<ul style="list-style-type: none"> • When combining heavy and light fabrics in a load, choose More Dry if you are using a sensor cycle.
	Exhaust system is blocked	<ul style="list-style-type: none"> • Inspect and clean exhaust system.

Problem	Possible Causes	What To Do
Clothes take too long to dry	Improper sorting	<ul style="list-style-type: none"> Separate heavy items from lightweight items (generally, a well-sorted washer load is a well-sorted dryer load).
	Large loads of heavy fabrics (like beach towels)	<ul style="list-style-type: none"> Large, heavy fabrics contain more moisture and take longer to dry. Separate large, heavy fabrics into smaller loads to speed drying time.
	Controls improperly set	<ul style="list-style-type: none"> Match control settings to the load you are drying.
	Lint filter is full	<ul style="list-style-type: none"> Clean lint filter before every load.
	Improper or obstructed ducting	<ul style="list-style-type: none"> Check installation instructions for proper ducting/venting. Make sure ducting is clean, free of kinks and unobstructed. Check to see if outside wall damper operates easily. Check the Installation Instructions to make sure the dryer venting is correct.
	Blown fuses or tripped circuit breaker	<ul style="list-style-type: none"> Replace fuses or reset circuit breakers. Since most dryers use 2 fuses/breakers, make sure both are operating.
	Overloading/combining loads	<ul style="list-style-type: none"> Do not put more than one washer load in the dryer at a time.
Clothes are wrinkled	Under-loading	<ul style="list-style-type: none"> If you are drying only one or two items, add a few items to ensure proper tumbling.
	Over-drying	<ul style="list-style-type: none"> Select a shorter drying time. Remove items while they still hold a slight amount of moisture. Select a Less Dry or Damp Dry setting.
	Letting items sit in dryer after cycle ends	<ul style="list-style-type: none"> Remove items when cycle ends and fold or hang immediately.
Clothes shrink	Overloading	<ul style="list-style-type: none"> Separate large loads into smaller ones.
	Some fabrics will naturally shrink when washed. Others can be safely washed, but will shrink in the dryer	<ul style="list-style-type: none"> To avoid shrinkage, follow garment care labels exactly. Some items may be pressed back into shape after drying. If you are concerned about shrinkage in a particular item, do not machine wash or tumble dry it
Water seen on inside of door and top of lint filter when opening door after steam cycle	Steam condenses on these surfaces	<ul style="list-style-type: none"> This is normal.
Small areas on clothes are damp after steam cycle	Steam condenses on inner drum	<ul style="list-style-type: none"> If using the Steam Dewrinkle cycle, manually reduce the cycle time. If using the Steam Refresh cycle, add more garments to the load.
Collars and waistbands still wet at end of cycle	The dryness monitor senses that the body of the clothes is dry	<ul style="list-style-type: none"> Choose Speed Dry or Timed Dry to dry damp collars and waistbands. In the future, when drying a load with collars and waistbands, choose More Dry.
Slight variation in metallic color	This is normal	<ul style="list-style-type: none"> Due to the metallic properties of paint used for this unique product, slight variations of color may occur due to viewing angles and lighting conditions.

--



Problem	Possible Causes	What To Do
<i>Small amount of water on floor in front of dryer</i>	Inadequate load size for steam cycle selected, excess steam condenses inside cabinet and leaks out	<ul style="list-style-type: none"> • If using the Steam Dewrinkle cycle, manually reduce time. If using the Steam Refresh cycle, add more garments to the load.
<i>Water on floor in back of dryer</i>	Loose water hose connection to valve	<ul style="list-style-type: none"> • Tighten connection.
	Hose missing rubber washer at connection with valve	<ul style="list-style-type: none"> • Install rubber washer provided with hose.
<i>Water drips from door when opened after a Steam Cycle</i>	Steam condenses on inner door	<ul style="list-style-type: none"> • This is normal.
<i>Cannot see steam at beginning of cycle</i>	Steam released at different time in cycle	<ul style="list-style-type: none"> • This is normal.
<i>Cannot see steam at any time during the cycle</i>	The steam nozzle might be clogged with debris from your water supply	<ul style="list-style-type: none"> • Call 800.GE.CARES to order nozzle replacement kit WE25M71 or to request a service technician to replace this for you.
<i>Garments still wrinkled after steam cycle</i>	Too many garments	<ul style="list-style-type: none"> • Load fewer garments; manually increase time.
<i>Dryer continues to tumble after display says complete</i>	Extended/Dewrinkle Tumble was selected	<ul style="list-style-type: none"> • Ensure Extended/Dewrinkle Tumble option is not selected. For the Steam Refresh cycle, Extended/Dewrinkle Tumble will automatically be turned on and cannot be turned off.
<i>Garments are wet after Steam cycle</i>	Lint filter not clean	<ul style="list-style-type: none"> • Clean lint filter
	Load is children/infant garments	<ul style="list-style-type: none"> • Use the Steam Refresh cycle.
<i>No numbers displayed during cycle, only lights</i>	Dryer is continuously monitoring the amount of moisture in the clothes	<ul style="list-style-type: none"> • This is normal. When the dryer senses a low level of moisture in the load, the dryer will display the dry time remaining.
<i>Time Remaining jumped to a lower number</i>	The estimated time may change when a smaller load than usual is drying	<ul style="list-style-type: none"> • This is normal.
<i>Dryer is running but 00 is displayed in Time Remaining</i>	The Extended/Dewrinkle Tumble option was chosen	<ul style="list-style-type: none"> • This is normal. During Extended/Dewrinkle Tumble, the time remaining is not displayed. The extended tumbling option lasts approximately 60 minutes; dewrinkle 30 minutes.
<i>Clothes are still wet and dryer shuts off after a short time</i>	The door was opened mid-cycle. The load was then removed from the dryer and a new load put in without selecting a new cycle	<ul style="list-style-type: none"> • A dry cycle must be re-selected each time a new load is put in.
	Small load	<ul style="list-style-type: none"> • When drying 3 items or less, choose Speed Dry or Timed Dry.
	Load was already dry except for collars and waistbands	<ul style="list-style-type: none"> • Choose Speed Dry or Timed Dry to dry damp collars and waistbands. In the future, when drying a load with collars and waistbands, choose More Dry.
	Dryer is not level	<ul style="list-style-type: none"> • Move dryer to an even floor space or adjust leveling legs as necessary until even.

Warning

This content is compiled from multiple sources and is provided for reference purposes only. It may not be complete or fully applicable to all situations. If you are unable to resolve your issue, please contact the product manufacturer or an authorized service provider for official support.

