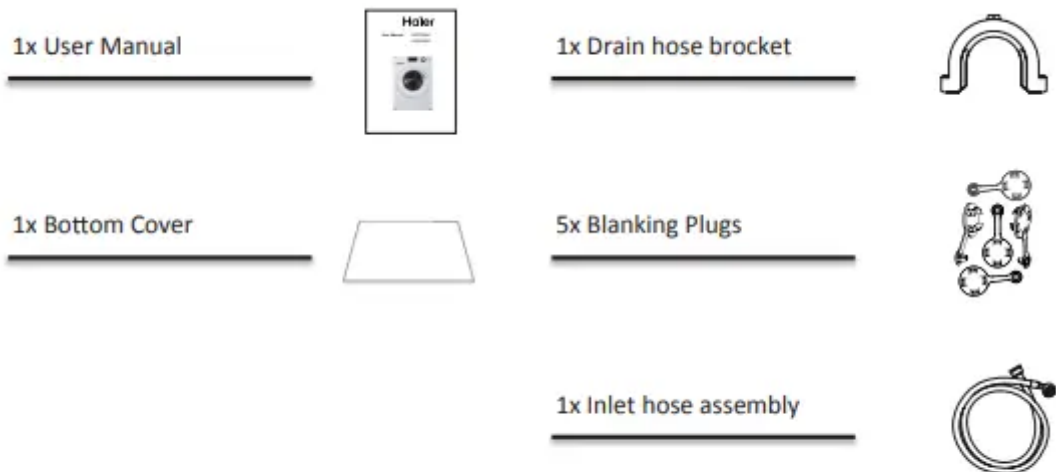


User Manual Washing Machine

Accessories

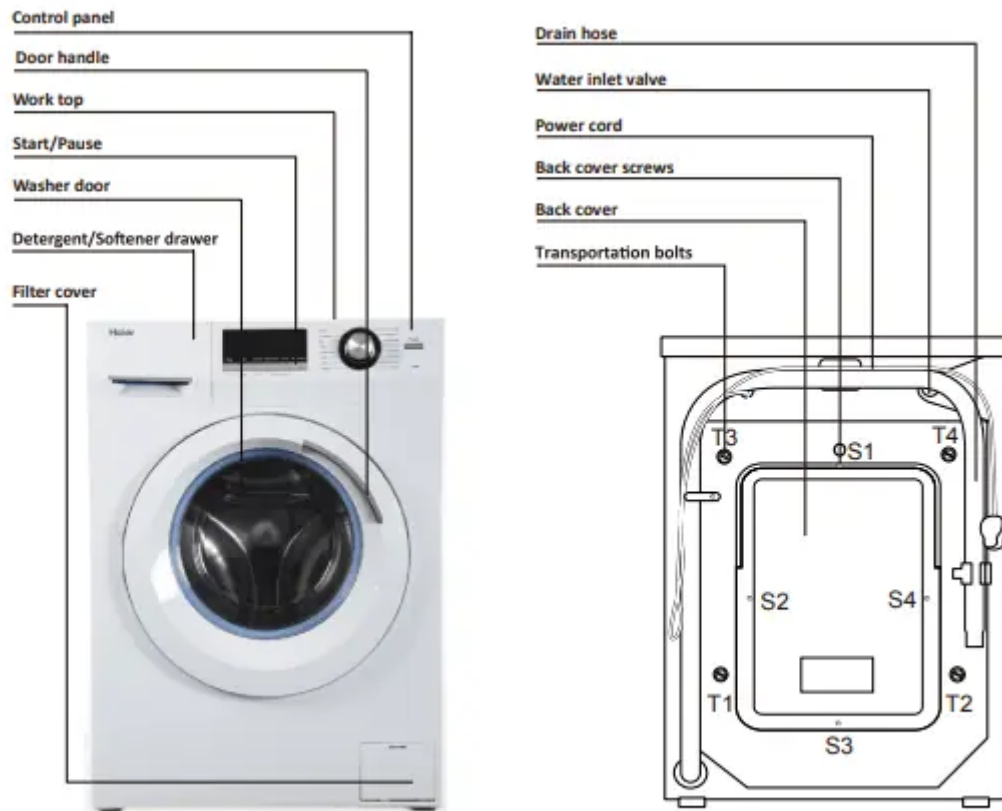
Check the accessories and literature in accordance with this list:



Before Use

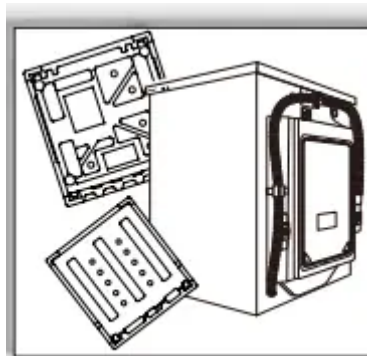
Descrion

- This diagram may be slightly different from the layout of the washing machine you have just purchased.



Preparing the machine

- Remove all the packing materials to prevent unsteadiness, including the polystyrene base. Upon opening the package, water drops may be seen on the plastic bag and the porthole. This is normal phenomenon resulting from water tests in the factory.

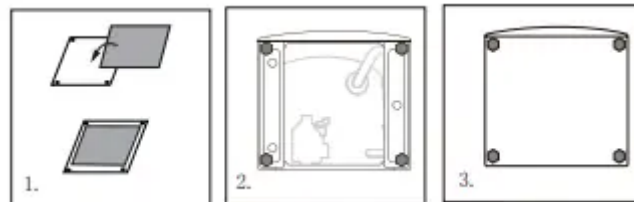


Installation

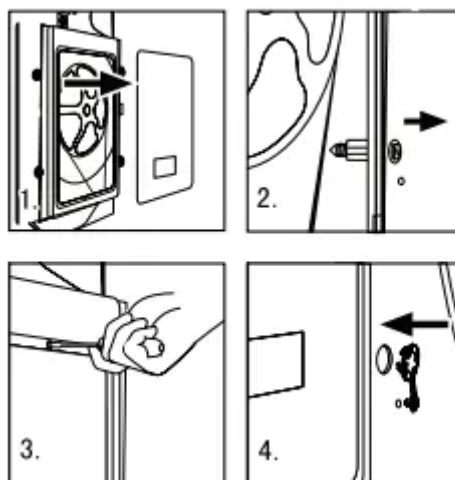
Warning. The washing machine is very heavy. Use safe lifting techniques

Paste the felts and install the plastic board: When opening the shrink package, you will find a plastic board and a felt, they are used for reducing noise after covering the bottom of the cabinet.

1. Paste the felts on any side of the plastic board
2. Put down the machine backward. Remove the four screws
3. Put on the plastic board which the side with felts is inward, then install the screws which go across the four holes on the plastic board. Finally lift the machine upright.



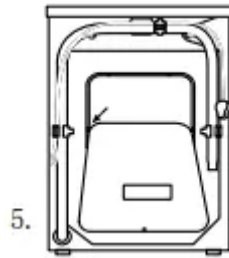
Dismantle the transportation bolts: The transportation bolts are designed for clamping anti-vibration on components inside of the washing machine during the transportation process.



- Remove the back cover.
- Remove the four bolts on the rear side and take out the plastic stabilizers from within the machine
- Replace the back cover.
- Fill the holes left by the bolts with blanking plugs.

Note:

- When you replace the back cover, the convex must face to outside, and you have to insert the back cover from the two gaps as shown in fig.5.
- Keep the transportation bolts stabilizers in a safe place for later use.



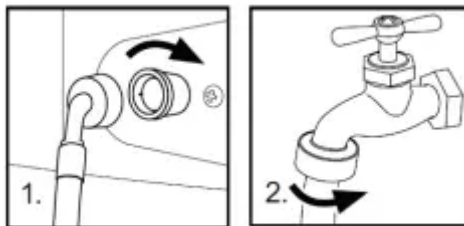
Adjusting the feet



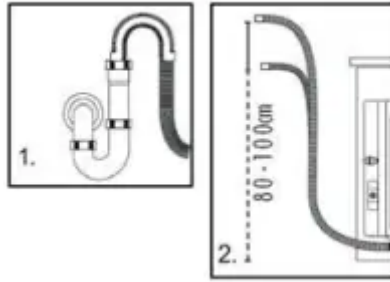
- There are adjustable feet under the bottom of the washing machine. Before use, they should be adjusted so that the machine is level. This will minimize vibrations and thus noise during use. It will also reduce wear and tear. We recommend using a spirit level to level the appliance. The floor should be as stable and flat as possible.

Inlet Hose:

- Connect the nut on the inlet hose to the connector on the water valve.
- Connect inlet hose to a water tap with cold, fresh water.
- Use the hose-set supplied with the appliance. Old hose-sets should not be reused.



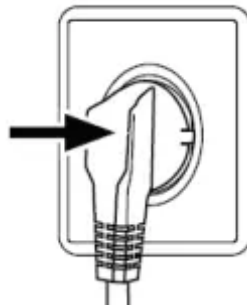
Drain Hose



- Use the drain hose bracket to keep the end of the drain hose retained and prevents the outlet of water. Don't extend the length of the drain hose; if an extended hose is required, please consult a serviceman or plumber.
- The height of the drainage outlet must be 80-100 cm. Fix the drain hose to the clip at the back of the washing machine to prevent it from dropping off.

The drain hose should not be submerged in water and should be securely fixed and leak-free. If the drain hose is placed on the ground if the pipe is at a height of less than 80cm, the washing machine will continuously drain while being filled (self-siphoning).

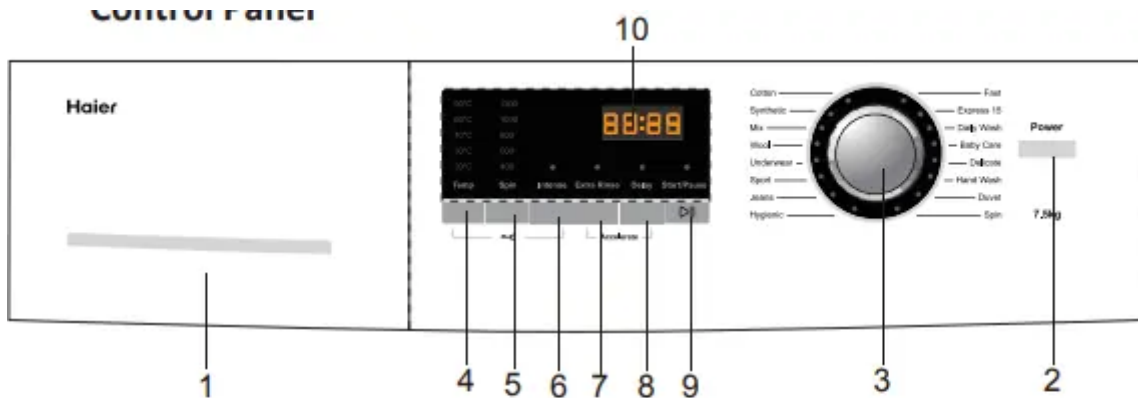
Connecting to Power Supply: Before connecting to the power supply, check:



- The socket is adequate for the maximum power of the washing machine (For safety, fuses in the power circuit should be rated for no less than 10A).
- The voltage should meet the requirement on the rating plate
- The power outlet should be capable of accepting the washing machine plug.
- Connect the machine to an earthed socket outlet.

Function

Control Panel

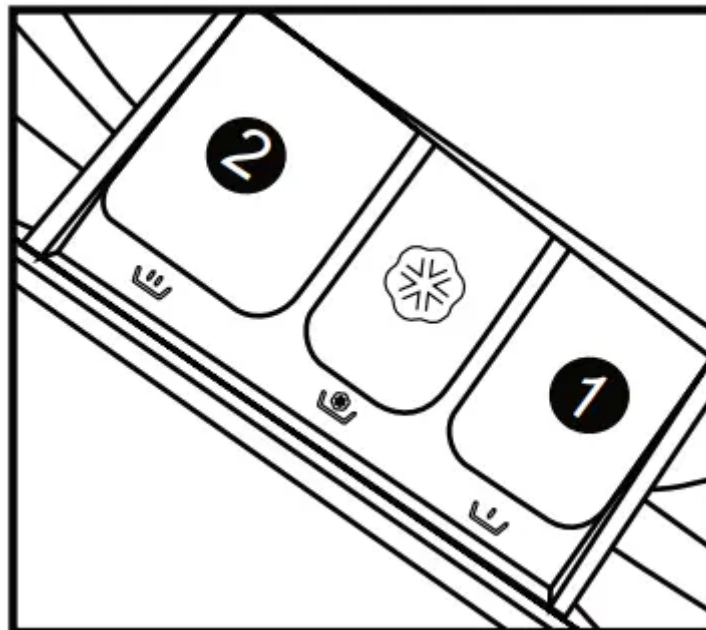


- | | |
|------------------------------|-----------------------|
| 1. Detergent/Softener Drawer | 6. Intense button |
| 2. Power Button | 7. Extra Rinse |
| 3. Program Dial | 8. Delay |
| 4. Wash Temp | 9. Start/Pause Button |
| 5. Spin Speed | 10. LED Display |

Operational Functions

No -- Function -- Explication

1. Detergent distribution drawer



- Open the drawer. three compartments can be seen:
- Compartment 1: Prewash detergent (for prewash mode).

- Compartment 2: Detergent for programs 1 to 15.

-



Compartment : Softener, conditioning agent.

The recommendation on the type of detergents is suitable for the various washing temperatures, please refer to the manual of detergent.

2. Power Button

- Press this button to switch on the washing machine. Press it again to switch it off. Press this button gently for 2 seconds to switch off the machine as buttons are soft touch sensitive.

3. Program Dial

- By turning the knob clockwise/counterclockwise. the required program can be selected. There are 16 programs available. After a program is selected, the corresponding light will illuminate.

4. Wash Temp

- Touch this button lightly, the washing temperature will be displayed on the indicator. Select a temperature according to the type of laundry. Note: If there is no indicator light displayed, this means cold wash.

5. Spin Speed

- Touch this button lightly to select the desired speed. When a speed is set, it will be displayed on the indicator. Note: If there is no indicator light displayed, this means no spinning.
- Different water temperatures and spinning speeds can be set for different laundries. Wash using the default settings if there is no special requirement.

6. Intense button

- If the laundry is very dirty, press this button before starting the program. When the button is pressed. the washing time increases.

7. Extra Rinse

- Press this button, the washing machine will perform additional rinses. Press the button once to select one additional rinse. The display will show "P-1". Press the button repeatedly and the screen will display "P-2" or "P-3". indicating two or three additional selected rinses. The "extra rinse light" is activated and flashes during the performance. "P-1/2/3" is displayed alternating with the remaining time. The light turns off and the display disappears when the extra rinse ends.
- You can select if you require this function when programs 1 -15 are used.

8. Delay

- Touch this button lightly, the washing machine will start operation after a period of time and the corresponding indicator will go on. The range is 0.5-24 hours; each touch of this button increases a half hour. After the button is set, press the Start/Pause button to start countdown of the set time (the time is displayed on the screen until the program ends).
- The delay time must be longer than the program time otherwise the washing machine will start the wash program directly.

9. Start/Pause Button

- When the washing machine is connected to the power socket and a program is selected, lightly touch this button to start operation. During a wash cycle, touch it lightly, operation will stop and the digits on the screen start blinking. Touch it again to resume operation. To cancel a wash program during a wash cycle, touch this button, when the digits on the screen start blinking, press the Power switch, the program will be cancelled.

10. LED Display

- Information as remaining wash time and error messages will be shown here.
- After a wash program is started the display will go on and the remaining wash time decreases. As the water pressure and temperature may differ, the remaining time may be adjusted accordingly. When the laundry is not balanced during spinning, the time may be automatically prolonged.

To cancel audible alarm

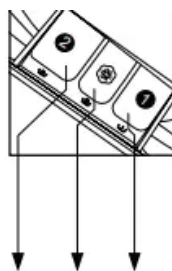
- Alarm sound can be cancelled if it is required (not recommended)
- Switch on the washing machine and turn the program knob to spin cycle, then press the "Delay" and "Extra rinse" button, hold on for 3 seconds.
- The message "BEEP OFF" will be displayed on the screen, indicating that the alarm sound has been cancelled.

To reinstate audible alarm

- Switch on the washing machine and turn the program knob to spin cycle, then press the "Delay" and "Extra rinse" button, hold on for 3 seconds. The "BEEP ON" message will be displayed on the screen, indicating that the alarm sound has been reinstated.

Accelerate Function: press extra rinse and delay at the same time for 3 seconds, then the display area shows "SPEED UP" (display 3S circularly), this function be activated, press these two button again, this "Accelerate" function will be canceled.

Program Modes



1 Detergent compartment for prewash mode

2 Detergent compartment

3 Compartment for softener

Programme	Temp. Max	Preset	2	3	1	Fibre Type	Preset Spin Speed	Accelerate
1 Cotton	0-90°C	30°C	✓	⊙	✗	Cotton /Synth	1400 rpm	✓
2 Synthetic	0-60°C	30°C	✓	⊙	✗	Chemical fibre fabrics	1200 rpm	✓
3 Mix	0-60°C	30°C	✓	⊙	✗	Cotton /Synth	1000 rpm	✓
4 Wool	0-40°C	---	✓	⊙	✗	Woolen fabrics	800 rpm	✗
5 Under wear	0-60°C	40°C	✓	⊙	✗	Underwear	1000 rpm	✓
6 Sport	0-40°C	20°C	✓	⊙	✗	Sports Wear	800 rpm	✗
7 Jeans	0-60°C	30°C	✓	⊙	✗	Jeans	1000 rpm	✓
8 Hygienic	90°C	90°C	✓	⊙	✗	Cotton	1000 rpm	✓
9 Fast	0-40°C	40°C	✓	⊙	✗	Cotton	1000 rpm	✗
10 Express 15	0-40°C	---	✓	⊙	✗	Cotton /Synth	1000 rpm	✗
11 Daily Wash	0-60°C	30°C	✓	⊙	✗	Cotton fabrics	1000 rpm	✓
12 Baby Care	0-90°C	40°C	✓	⊙	✗	Cotton /Synth	1000 rpm	✓
13 Delicate	0-30°C	30°C	✓	⊙	✗	Silk	800 rpm	✗
14 Hand Wash	0-30°C	30°C	✓	⊙	✗	Cotton fabrics	400 rpm	✗
15 Duvet	0-40°C	40°C	✓	⊙	✗	Cotton	800 rpm	✓
16 Spin	---	---	✗	✗	✗	---	1000 rpm	✗

Consumption Table

The wash cycle times are intended as a guide only. The actual time used may vary due to different water pressure, initial water temperature, etc.

Program	Temp.	Max.Load HWF75AW1 HWF85AW1	Energy Consumption HWF75AW1 HWF85AW1	Water Consumption HWF75AW1 HWF85AW1	Wash Time	Spin Performance
Cotton	30°C*	7.5/8.5kg	0.837/1.038kwh	61.2/67.5L	1:58h	53%
Synthetic	30°C	7.5/8.5kg	/	/	1:33h	49%
Mix	30°C	7.5/8.5kg	/	/	1:07h	/
Wool	-	2/2.5kg	/	/	0:48h	/
Underwear	40°C	4/4.5kg	/	/	1:03h	/
Sport	20°C	2/2.5kg	/	/	0:25h	/
Jeans	30°C	7.5/8.5kg	/	/	1:12h	/
Hygienic	90°C	4/4.5kg	/	/	2:06h	/
Spin	-	/	/	/	0:07h	/
Duvet	40°C	2/2.5kg	/	/	1:12h	/
Hand Wash	30°C	2/2.5kg	/	/	0:46h	/
Delicate	30°C	2/2.5kg	/	/	0:41h	/
Baby Care	40°C	4/4.5kg	/	/	1:30h	/
Daily Wash	30°C	4/4.5kg	/	/	0:51h	/
Express 15	-	2/2.5kg	/	/	0:15h	/
Fast	20°C	2/2.5kg	/	/	1:00h	/

Choose the best Detergent

	Universal	Color	Delicate	Special	Softener
Cotton	L/P	L/P	-	-	O
Synthetic	L/P	L/P	L	-	O
Mix	L/P	L/P	-	-	O
Wool	-	-	-	L	O
Underwear	L/P	L/P	-	-	O

	Universal	Color	Delicate	Special	Softener
Sport	-	-	-	L	O
Jeans	L/P	L/P	L	-	O
Hygienic	L/P	L/P	L	-	O
Express 15	L	L	-	-	O
Daily Wash	L/P	L/P	L	-	O
Baby Care	L/P	L/P	-	-	O
Delicate	-	-	L	-	O
Hand Wash	-	-	-	L	O

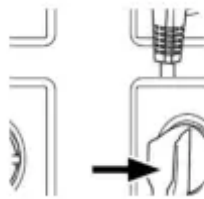
	Detergent	Temperature range in °C
L	Liquid	cold - 60
P	Powder	40 - 90
O	Optional	- - -
-	No	- - -

- If using liquid detergent, it is not recommended to activate the delayed start. The amount of detergent required please refer to the detergent packaging.
- Info: Modern washing detergents work at low temperatures.

Washing Methods

Power Supply

- Connect the washing machine to the power supply (220V to 240V~/50Hz)



Water connection

- Turn on the tap. The water must be clean and clear.
 - Before use, check for leaks in the joints between the tap and the inlet hose by turning on the tap.



Preparing the Laundry

- Sort out clothes according to fabric (c how dirty they are).

- Separate white clothes from colored ones. Wash them first by hand to check if they fade or run.
- Empty pockets (keys, coins, etc.) and (e.g. brooches).



Attention: Small parts (like buttons, etc) may lead to repair work which user has to pay by him and can cause damage in the machine.



- Garments without hems, underwear, and finely woven textile such as fine curtains are to be put into wash bag (it is better not to wash them in a washing machine).
- Close zippers and hooks, make sure the buttons are sewn on tightly and place small items such as socks, belts, bras, etc, in the wash bag.
- Unfold large pieces of fabric such as bed sheets, bedspreads, etc.
- Turn shirts inside out.

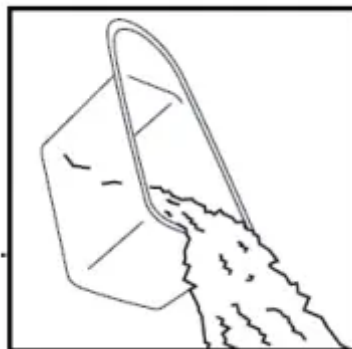
Loading the appliance

- Open the washer door put in the laundry piece by piece. Close the door tightly. When first using the washing machine, let it run unloaded for one program to prevent the laundry from being tainted by oil or dirty water from the washing machine. Before washing you should run the machine without laundry, but with detergent, with 60°C program.
- Do not overload the washing machine.



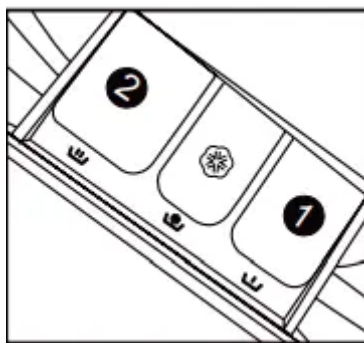
Selecting Detergent

- The washing efficiency and the performance is determined by the quality of detergent used. Special non-foaming detergent produces good washing results. Use specific detergents for synthe and woollen goods. Do not use dry cleaning agents such as trichloroethylene and similar products.
- Do not add more detergent than needed; otherwise, it may cause the situations as following and washing machine malfunction impacting washing machine's life.
- Due to the increasing foam, the rinse time will be longer than normal;
- The foam may overflow from the detergent drawer because of the increasing pressure of the foam;
- It may remain foam without cleaning out after the final spinning cycle.



- Recommendation:
 - Clean the detergent drawer once a week.
 - When using the prewashing program, please add half of the rating dosage.
 - Please follow the dosage recommendation on the powder or liquid detergent package

Adding Detergent



Slide out the detergent drawer and put the required detergent and softening agent into the corresponding compartments. Push back the drawer gently. (Refer to the instructions on the drawer)

- For prewashing program, detergent should be added to both compartments 1 and 2. For other programs, do not add detergent to compartment 1.
- Use liquid detergent according to the instructions on its package.
- Do not use liquid detergent if the prewash mode or "Delay" is selected.
- Do not overuse softener; otherwise, it will damage the artificial fibers.

Selecting program



- To get the best washing results, an appropriate washing program should be selected according to the laundry type. Please turn the program knob to select the right program.

Selecting functional

- Select the required options. (Refer to the "Control panel")

Selecting washing temperature

- Press and hold down the temperature button until the desired temperature is selected

Selecting spin speed

- Press and hold down the speed button until the desired speed is selected. See "Operational functions" on the "Control panel" for selecting temperature and spin speed. It is advisable to select the recommended value.

Washing

- Press the Start/Pause button. The washing machine will operate according to the preset programs. The washing machine will stop operation automatically when a washing cycle ends. The "End" sign will appear on the display. Open the washer door and take out the laundry.

After washing

- Turn off the water supply and unplug the power cord. Open the washer door to prevent formation of moisture and odors. Leave the door open while not used.

Care Chart

Machine Wash, COLD	Hand Wash	Tumble Dry, NO HEAT	Do Not Tumble Dry	Iron, Steam or Dry, with LOW HEAT
Machine Wash, WARM	Do Not Wash	Tumble Dry, LOW HEAT	Line Dry	Iron, Steam or Dry, with MEDIUM HEAT
Machine Wash, HOT	Bleach as needed Any bleach, like Clorox®, may be safely used	Tumble Dry, MEDIUM	Drip Dry	Iron, Steam or Dry, with HIGH HEAT
Machine Wash, COLD Permanent Press	Non-chlorine Bleach as needed Use only a color-safe bleach, like Clorox 2®	Tumble Dry, HIGH	Dry Flat	Do Not Iron with Steam
Machine Wash, WARM Permanent Press	Do Not Bleach No bleach product should be used including detergents with bleach - or follow bleach package test procedures to test for bleach safety.	Tumble Dry, Permanent Press, NO HEAT	Don't dry clean	Do Not Iron
Machine Wash, HOT Permanent Press	Wool Mark	Tumble Dry, Permanent Press, LOW HEAT	Dry on clothes hanger	Dryclean May appear with additional letters and/or lines Take this item to a professional drycleaner
Machine Wash, COLD Gentle Cycle		Tumble Dry, Permanent Press, MEDIUM	Tumble dry, Medium heat	Do Not Dryclean
Machine Wash, WARM Gentle Cycle		Tumble Dry, Gentle Cycle, NO HEAT	Tumble dry, low heat	Dry cleaning with any solvent
Machine Wash, HOT Gentle Cycle		Tumble Dry, Gentle Cycle, LOW HEAT	Don't tumble dry	Dry cleaning with pericloride
		Tumble Dry, Gentle Cycle, MEDIUM		

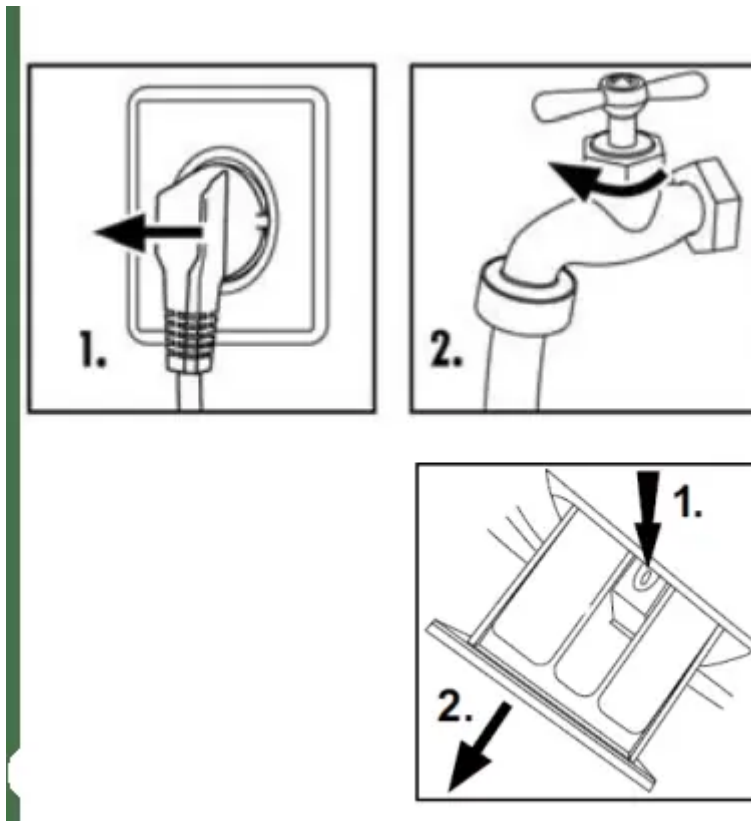
Load Reference

Material	Made of	Load in grams
Bed Sheet	Cotton	Approximately 800
Blanket	Wool	Approximately 3000
Blended fabric clothes	/	Approximately 800
Jackets	Cotton	Approximately 800
Jeans	/	Approximately 800
Overalls	Cotton	Approximately 950
Ladies Pyjamas	/	Approximately 200
Shirts	/	Approximately 300
Socks	Blended fabrics	Approximately 50
T-Shirts	Cotton	Approximately 300
Underwear	Blended fabrics	Approximately 70

Maintenance

Cleaning and Care

After washing



- Turn off the water supply and remove the electrical plug after each wash. Open the washer door to prevent formation on of moisture and odors. If the washing machine is left idle for a long period, drain the water in the machine and replace the drain hose.

Cleaning the detergent drawer

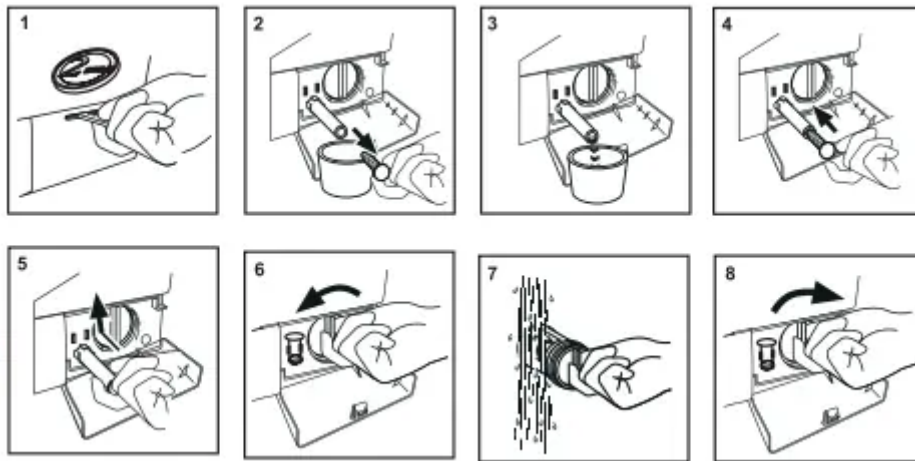
- Clean the detergent distribution drawer regularly.
- Pull out the drawer flush it clean with water and then replace it.

Cleaning the machine

- Unplug the machine during cleaning and maintenance. Use a so cloth dampened with soap liquid to clean the machine case and rubber components. Do not use organic chemicals or corrosive solvents.

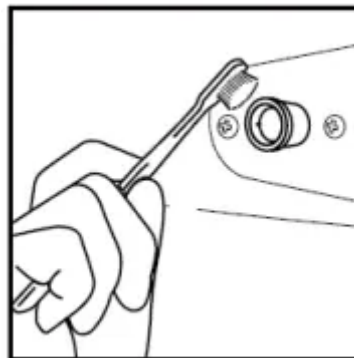
Cleaning the filter

- Clean the filter once a month:
- Open the bottom cover.
- Remove the filter by turning counterclockwise.
- Flush the filter clean with running water.
- Replace the filter by turning clockwise and remount the cover



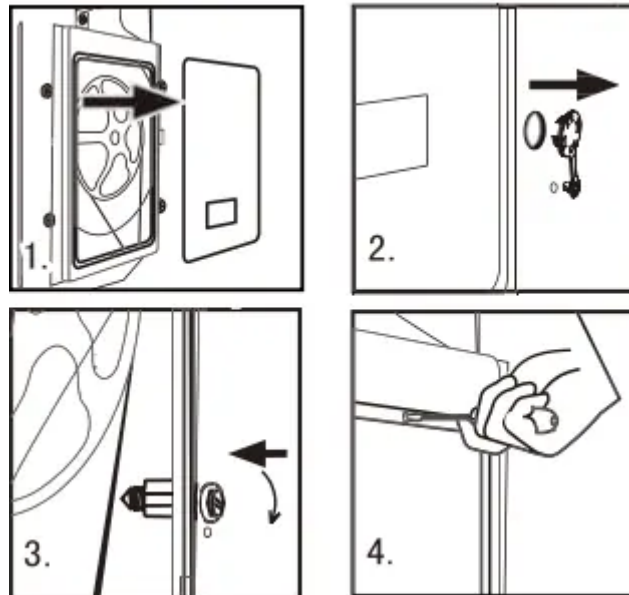
- The filter must be in place, or it may lead to leakage
- Place a container under the filter, to collect any excess water that may come out of the drain pump

Water inlet valve and inlet valve filter



- To prevent blockage to the water supply by ingress of foreign substances, clean the water inlet valve and inlet valve filter regularly.

Moving the machine



- If the machine is to be moved to a distant location, replace the transportation bolts removed before installation to prevent damage as shown below.
- Remove the back cover.
- Remove the blanking plugs.
- Insert the plastic stabilizers and the transportation bolts.
- Tighten the bolts with a spanner.
- Replace the back cover.

Long periods of disuse

- If the washing machine is left idle for a long period, pull out the electrical plug and turn off the water supply. Open the washer door to prevent formation of moisture and odors. Leave the door open while not used.

Display Codes

Display Codes and special functions

1. E1

- Drainage error, water not emptied within 6 minutes.
 - Clean the filter and check the drain hose for blockage. If error still exists, please contact the maintenance personnel.

2. E2

- Door is not properly shut.
 - Shut the door properly, and then press the Start / Pause button

3. F3

- Temperature sensor not properly connected or damaged.
 - Contact the maintenance personnel.

4. F4

- Heater error (Appears at the end of a cycle).
 - Contact the maintenance personnel.

5. E4

- Water level not met in 7/8/10 minutes. The height of the drain hose is below 80 cm. The drain hose is in water.
 - Make sure that tap is turned on, and water pressure is normal. If problem still exists, please contact the maintenance personnel. Install drain hose within 80-100 cm of height. Make sure the drain hose is not in water

6. F7

- Motor Error
 - Contact the maintenance personnel

7. E8

- Water exceeds protective level
 - Contact the maintenance personnel.

8. FA

- Water level sensor error.
 - Contact the maintenance personnel.

9. FC1

- Abnormal communication error display board and motor
 - Contact the maintenance personnel.

10. FC2

- Abnormal communication error display board and power board
 - Contact the maintenance personnel.

11. End

- End of wash cycle.

12. 19:30

- Status information: Preset time for delayed operation

13. 1:25

- The remaining time is 1 hour 25 minutes

14. UNb

- Washing machine has an unbalanced load protection function. When unbalanced weight is greater than allowable maximum, the washing machine will not spin and will run at a speed to avoid abnormal vibration and noise
 1. In case washing 1 piece of laundry(carpet, bed sheet, table sheet, ct) make it symmetrical inside the drum.
 2. Lower the wet weight of laundry pieces by wringing manually and placing them back in the drum in symmetrical position.
 3. Take out and then reposition the laundry piles inside the washing machine in a more balanced position on the inner wall of the drum.
 4. Add 1 or 2 pieces of laundry into the drum to reduce the unbalanced load effects.
 5. Restart the spin cycle by closing spin programme. In case the failure persists, please ask a qualified technician to repair it.
 6. Select a lower spin speed. and if OK then select Spin program and a higher spin speed

Control panel lock function: Press the "Temp." and the "Intense" buttons simultaneously for 3 seconds after starting a program. When the function is activated, it will display "lock". It can no longer be changed by operating buttons or knobs. To unlock press the "Temp." and "Intense" buttons again for 3 seconds.

Power-off memory function: In case of abrupt power failure or the need to cut off the power during a program cycle, the present settings will be saved and the preset operation will resume when the power is on again.

To cancel a program, Press the "Start/Pause" button, then switch off the power and the program is automatically cancelled. Turn the program selector again to choose another Program.

During the spin process, if too much foam is inspected, in order to protect the motor, the washing machine will eliminate the foam automatically; the motor will stop and the drain pump will drain the water continuously for 90 seconds. If it happens more than 3 times, the motor will stop until the end of cycle without spinning.

Trouble-Shooting

1. Washing machine fails to operate

Causes

- Poor connection to the power supply.
- Power failure.
- The washer door is not properly closed.
- Machine has not been switched on.

Solutions

- Check connection to the power supply.
- Check the power supply.
- Close the washer door properly.
- Make sure the machine is switched on

2. Washing machine cannot be filled with water, filled.

Causes

- The "Start/Pause" button is not pressed.
- Water tap is not turned on.
- Water pressure is less than 0,3 MPa.
- The inlet hose is kinked.
- Water supply failure.
- The program knob is not properly set.
- The washer door is not properly closed.
- The inlet hose filter is blocked.

Solutions

- Press the "Start/ Pause" button
- Turn on the water tap.
- Check water pressure.
- Check the inlet hose.
- Ensure the water supply.
- Set the program knob properly.
- Close the washer door properly.
- Unblock the inlet hose filter

3. Machine is draining while being

Causes

- The height of the drain hose is below 80 cm.

- The drain hose is in water.

Solutions

- Install drain hose within 80-100 cm of height.
- Make sure the drain hose is not in water.

4. Drainage failure.

Causes

- Drain hose is blocked.
- Drain hose end is higher than 100 cm above the floor level.
- The filter is blocked

Solutions

- Unblock the drain hose.
- Make sure the drain hose end is lower than 100 cm above floor level.
- Unblock the filter.

5. Strong vibration while spinning.

Causes

- Not all transportation bolts have been removed.
- Washing machine is located on an uneven surface or is not level.
- Machine load is over 7/8/10kg.

Solutions

- Remove all transportation bolts.
- Make sure the washing machine is on an even surface and levelled.
- Reduce amount of laundry in the drum.

6. Operation stops before completing wash cycle.

Causes

- Water or electricity failure

Solutions

- Check the power supply or water supply.

7. Operation stops for a period of time.

Causes

- Washing machine gives an error message.
- Washing machine is in soaking cycle?

Solutions

- Check display codes.
- Press the rinse hold button or the Start/pause button again to cancel it.

8. Excessive foam in the drum, which spilled to the distribution drawer.

Causes

- The detergent is not a low-foaming type or for manual wash.
- Excessive use of detergent.

Solutions

- Check if your detergent is appropriate.
- Reduce amount of detergent in the distribution drawer

9. Automatic adjustment of the washing time.

Causes

- The washing program duration will be adjusted

Solutions

- This is normal and doesn't affect the functionality

10. Spinning fails

Causes

- Unbalance of the laundry

Solutions

- Add clothes or run a spinning program again.

Technical data

Basic technical information regarding the appliance.

	HWF75AW1	HWF85AW1
Power source	220 - 240V~/50 Hz	220 - 240V~/50 Hz
Max. working current (A)	10	10
Water pressure (MPa)	0.03≤P ≤1	0.03≤P ≤1
Washing programs	16	16
Max power (W)	2000	2000
Dimensions (HxDxW mm)	850 x 600 x 595	850 x 650 x 595
Net weight (kg)	72	74

Warning

This content is compiled from multiple sources and is provided for reference purposes only. It may not be complete or fully applicable to all situations. If you are unable to resolve your issue, please contact the product manufacturer or an authorized service provider for official support.

Document generated by [ManualsFile](#)

