

## IN THE BOX

- A1. Water tank lid
- A2. Water tank
- A3. Cup warmer
- A4. Control panel buttons
- A5. Steam dial
- A6. Water spout / milk container coupling
- A7. ON/OFF switch
- A8. Drip tray

- B1. Filter-holder with 3 cups
- B2. Tamper/dispenser measure scoop



## MACHINE SET UP



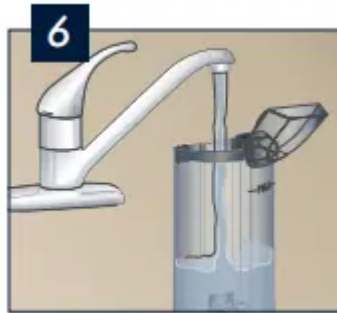
Main switch on side of machine.



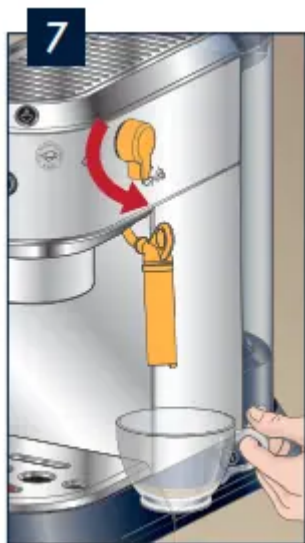
The machine preforms a self-test signalled by the sequential flashing of lights.



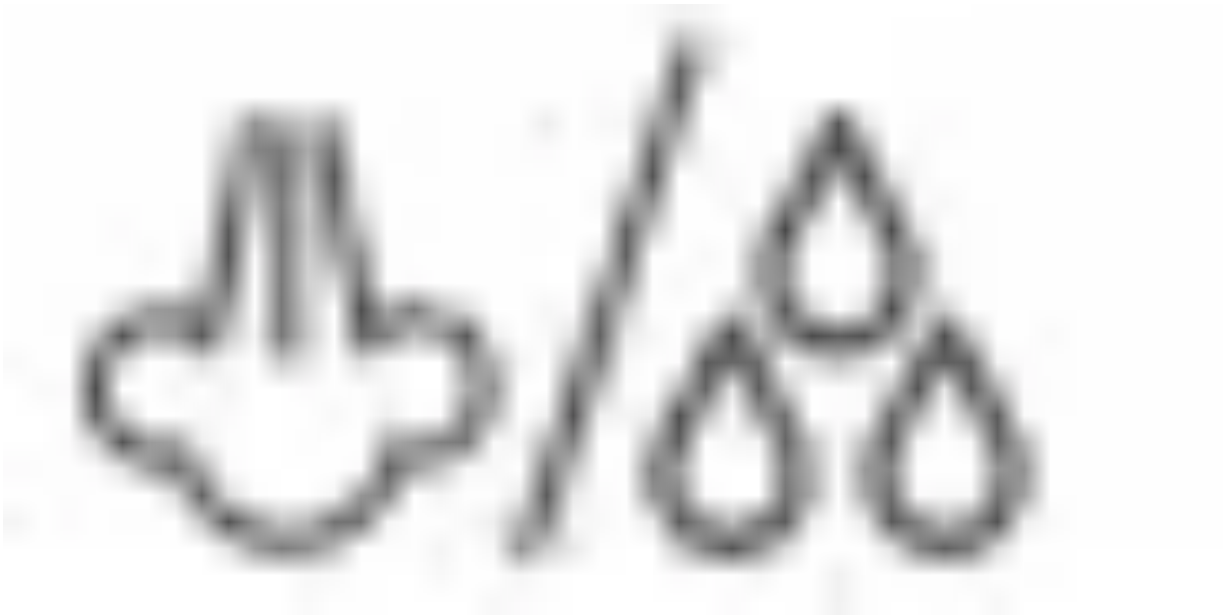
The machine is warming up, when lights stop blinking the machine is almost ready for use.



Fill water tank



Turn the steam dial to the



position. The machine will prime and a little water will be released.

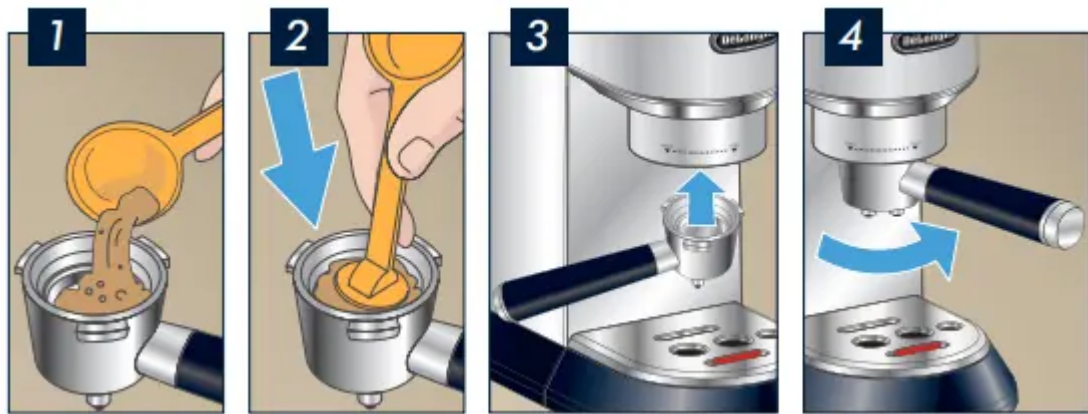


Turn the steam dial to the

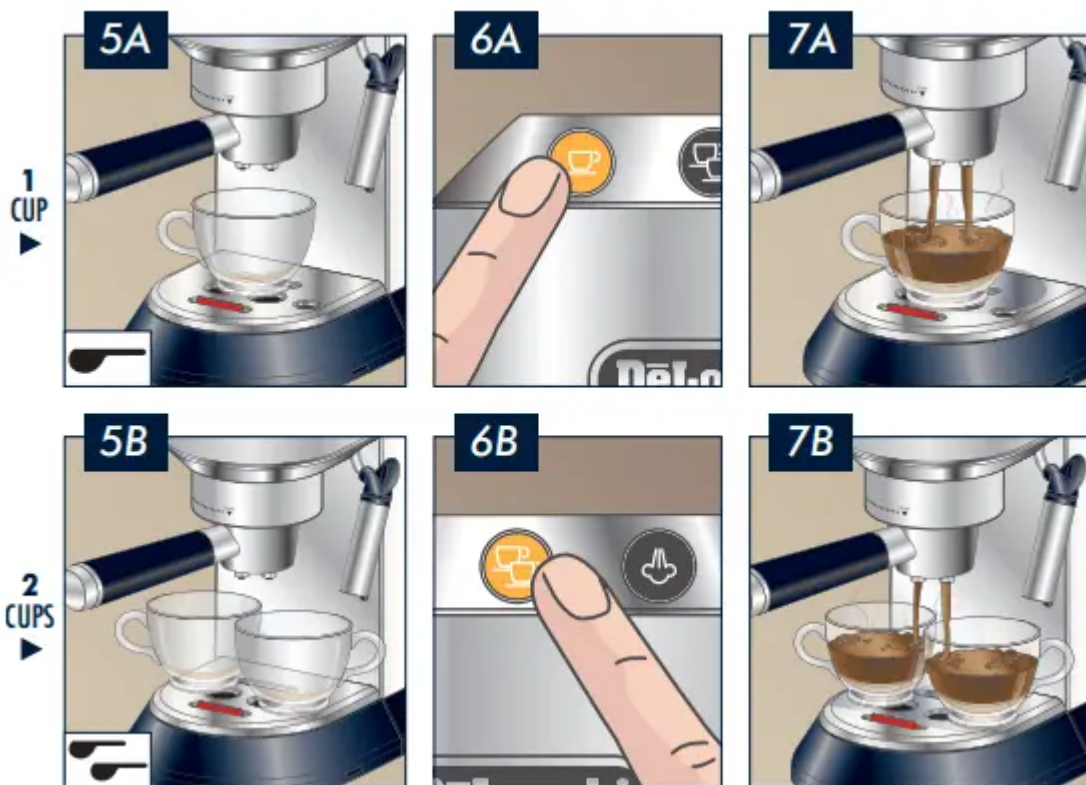


position. The machine is ready for use.

# BREWING ESPRESSO Using Pre-Ground Espresso



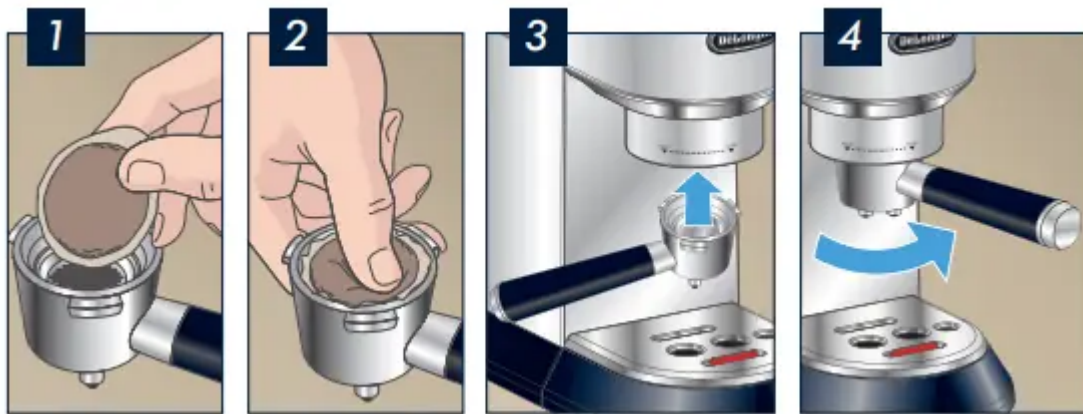
Use correct filter, marked on bottom of cup.



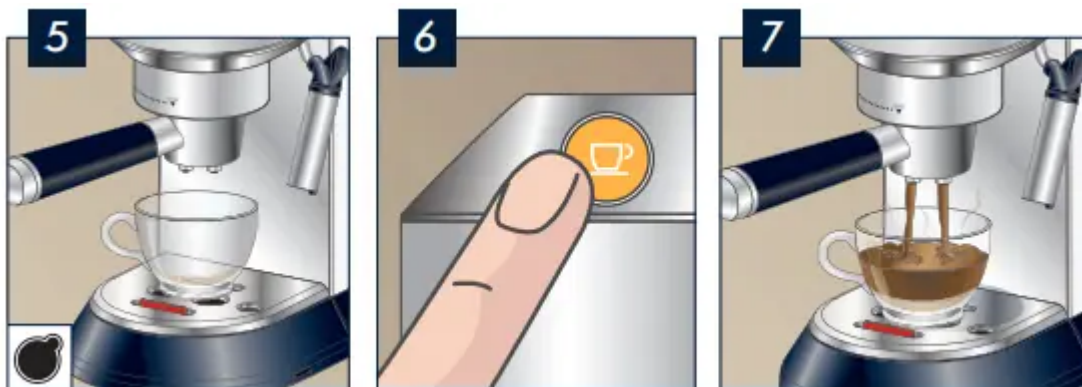
Brew 1 or 2 Espresso at one time.



## BREWING ESPRESSO Using E.S.E. POD Espresso



Use correct filter, marked on bottom of cup.



E.S.E. (which stands for Easy Serving Espresso) is the technology being used to simplify the preparation of a good espresso using just a few simple actions, thanks to the adoption of the “serving” (individual pre-packed doses containing 7 grams of ground coffee that has been pressed and hermetically sealed between two fine layers of filter paper).



## BREWING CAPPUCCINO or LATTE

Refer to previous section BREWING ESPRESSO for the espresso related part.



Fill 1/3 of the pitcher, 3.5 oz. for Cappuccino, 6 oz. for Latte.





Be sure frother is immersed in milk, but not beyond the highlighted mark on the spout



Set the desired level of foam



If both coffee buttons are blinking, you must cool down the boiler.



Turn dial ON allowing water to be delivered. When water stops, turn dial to



position.



Prepare the coffee as described in the previous sections. Brew in a larger cup.



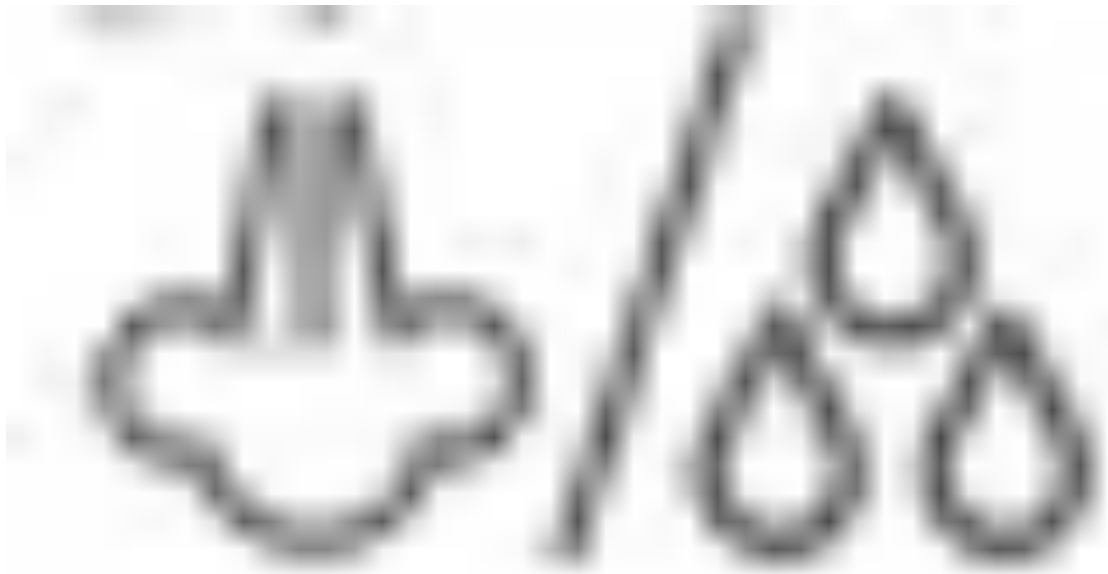
Pour the milk over the espresso and enjoy!

## DELIVERING HOT WATER

### Delivering hot water



1. Place a container under the spout (as close as possible to avoid splashes).
2. Turn the steam dial to the



position. Water runs out of the spout.

3. Turn the dial to the



position when the desired amount of water has been delivered. NOTE: You can stop the flow of water by pressing the button. (You should not run off hot water for more than 2 minutes at a time).

4. Press any button.

### **Delivering steam**



1. Make sure the hot water spout is attached correctly.
2. Fill a container with the liquid to be heated/ frothed and immerse the spout/ cappuccino maker in the liquid.
3. Press the



button twice. After a few seconds, the steam to heat the liquid comes out of the cappuccino maker.

4. When the required temperature/foam is obtained, interrupt steam delivery by pressing the



button again. (You should not discharge steam for more than 3 minutes at a time).

#### Tips for using steam to froth milk

- When choosing the size of the container, bear in mind that the liquid doubles or triples in volume.
- For a richer denser froth, use skimmed or partially skimmed milk at refrigerator temperature (about 41F/5°C).
- For a creamier froth, rotate the container with slow movements in an upward direction.
- To avoid milk with poor froth or large bubbles, always clean the spout.

## TEST YOUR WATER

### Measuring Water Hardness

1. Remove the “total hardness test” indicator paper attached to this manual from its pack.
2. Immerse the paper completely in a glass of water for one second.
3. Remove the paper from the water and shake lightly. After about a minute, 1,2,3, or 4 red squares form, depending on the hardness of the water. Each square corresponds to one level.



Press



button and hold for 10 seconds. The lights will blink in sequence. You are now in the setting menu.



Press the



button to enter the water hardness setting





Press the button that correspond to the correct hardness level.



The button indicates that the selection has been saved.

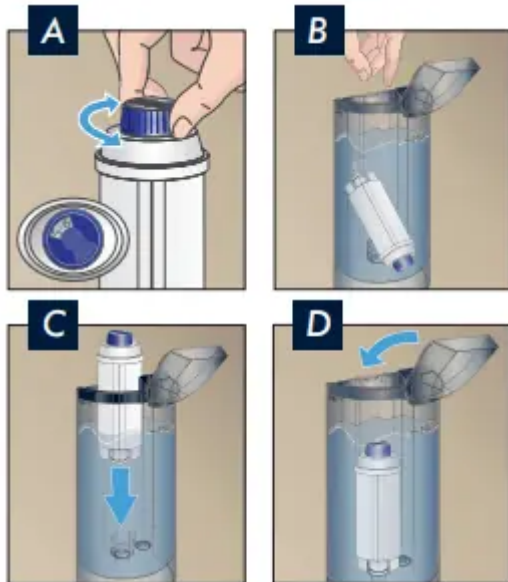
When setting the water hardness, it is very important to set the correct frequency of the descaling cycles. You should always keep this machine clean, and it will help improve its performance and prolong the life of the machine.

## WATER FILTER

### Installing the filter

1. Remove the filter from packaging and rinse the filter with about half a liter of tap water.
2. Rotate the calendar disk (A) so that the next two months are displayed.

3. Remove the tank from the appliance and fill with water.
4. Insert the filter(B) in the water tank and immerse it completely for ten or so seconds, sloping it to enable the air bubbles to escape.
5. Insert the filter in the filter housing (C) and press as far as it will go.
6. Close the tank with the lid (D), then replace the water tank in the machine.
7. The new filter is active. You can now use the coffee maker



Please note! The filter lasts about two months if the appliance is used normally. If the coffee maker is left unused with the filter installed, it will last a maximum of three weeks

## **CLEANING and MAINTENANCE: DESCALING**

### DESCALING

Descal the machine when the



orange light comes on.

Important! Descaler contains acids which may irritate the skin and eyes. It is vital to respect the manufacturer's safety warnings given on the descaler pack and the warnings relating to the procedure to follow in the event of contact with the skin and eyes.

NOTE: Failure to descale the appliance as described above voids the guarantee.

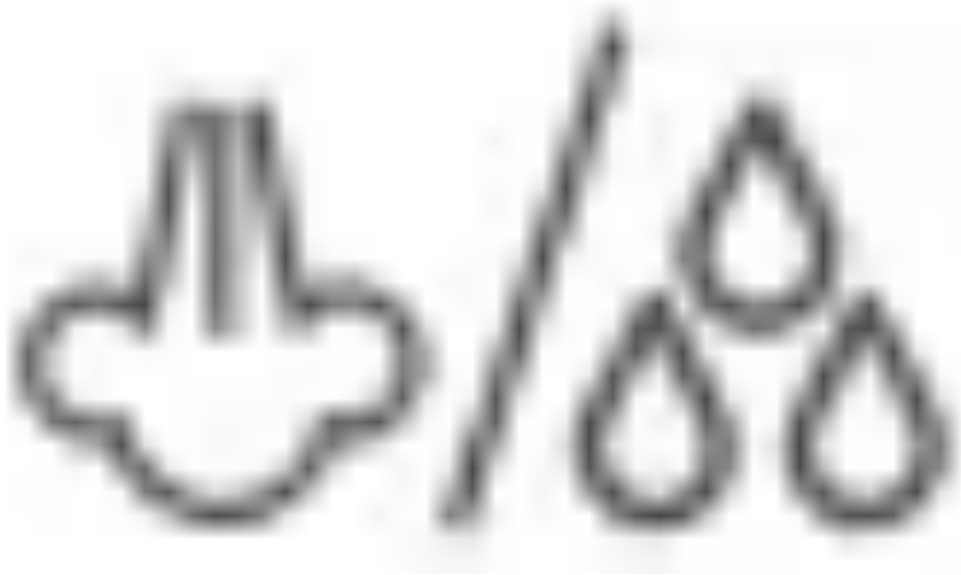
1. Turn the machine on.
2. Completely empty the water tank (A) and remove the water filter (if present).

3. Pour the descaler (B) and water (C) into the tank, according to the manual instructions.
4. Place an empty container (D) with a minimum capacity of 50 oz under the hot water spout and boiler outlet.
5. Press the



button and hold for 10 seconds. The lights will blink in sequence. You are now in the setting menu.

6. Turn the steam dial to



press

and



button. The descaling program automatically performs a series of deliveries at intervals to remove the lime scale from inside the coffee machine.

7. From time to time turn the steam dial to the position to deliver small quantities of descaler from the boiler outlet.

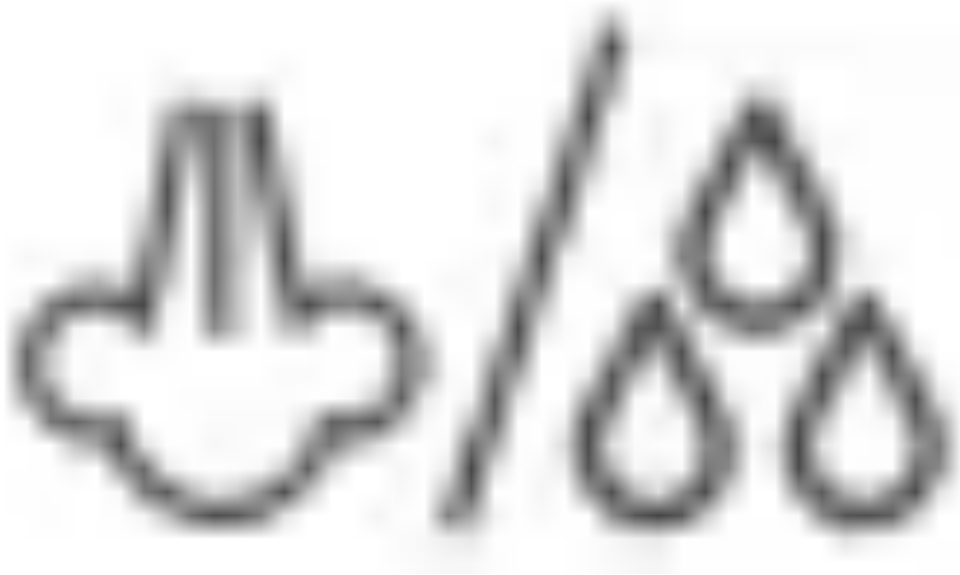
8. Once the descaling solution is terminated, the



orange light starts blinking

9. To eliminate the solution and lime scale residues, rinse the tank and fill it with fresh water (without descaler); empty the containers and place them under the boiler outlet and hot water spout.

10. Turn the steam dial to the



position and press the



button to start the rinsing.

11. From time to time turn the steam dial to the position to deliver small quantities of water from the boiler outlet

12. Once the water tank is empty, turn the steam dial to



position.

The appliance is now ready for use.

Repairs to the coffee machine relative to lime scale problems are not covered by the warranty if the descaling procedure described above is not performed on a regular basis.



## Important!

- Descaler contains acids which may irritate the skin and eyes. It is vital to respect the manufacturer's safety warnings given on the descaler pack and the warnings relating to the procedure to follow in the event of contact with the skin and eyes. Use De'Longhi descaler only. Under no circumstances should you use sulphamic or acetic based descalers. Their use invalidates the guarantee.

# TROUBLESHOOTING



<b>Problem</b>	<b>Cause</b>	<b>Solution</b>
No espresso coffee is delivered	No water in the tank	Fill the tank
	The holes in the filter holder are blocked	Clean the filter holder spout holes
	The tank has been inserted incorrectly and the valves on the bottom are not open	Press the tank down lightly to open the valves on the bottom
	Limescale in the water circuit	Descale as described in the section "Descaling"
The espresso coffee drips from the edges of the filter holder rather than the holes	The filter holder has been inserted incorrectly or is dirty	Attach the filter holder correctly and rotate firmly as far as it will go
	Attach the filter holder correctly and rotate	Have the espresso boiler gasket replaced by Customer Services
	The holes in the filter holder spouts are blocked	Clean the spout holes
The filter holder cannot be attached to the appliance	Too much coffee has been placed in the filter	Use the measure supplied and make sure you are using the correct filter for the type of preparation
The coffee froth is too light (delivered from the spout too fast)	The pre-ground coffee is not pressed down firmly enough	Press the pre-ground coffee more firmly
	There is not enough pre-ground coffee	Increase the quantity of pre-ground coffee
	The pre-ground coffee is too coarse	Use only pre-ground coffee for espresso coffee makers
	The wrong type of pre-ground coffee is being used	Change the type of pre-ground coffee

The coffee froth is too dark (delivered from the spout too slowly)	The pre-ground coffee is pressed down too firmly	Press the coffee down less firmly
	There is too much pre-ground coffee	Reduce the quantity of pre-ground coffee
	The espresso boiler outlet is blocked	Clean as described in the section "Cleaning the boiler outlet"
	The filter is blocked	Clean as described in the section "Cleaning the filter"
	The pre-ground coffee is too fine	Use only pre-ground coffee for espresso coffee makers
	The pre-ground coffee is too fine or damp	Use pre-ground coffee for espresso coffee makers only and make sure it is not too damp
	Limescale in the water circuit	Descale as described in the section "Descaling"
After delivering coffee, the filter remains attached to the boiler outlet		Insert the filter holder again, deliver coffee, then remove the filter holder
The appliance will not make any drink and the	No water in the tank	Fill the tank with water



and



lights flash for a few seconds	The tank has been inserted incorrectly and the valves on the bottom are not open	Press the tank down lightly to open the valves on the bottom
	The espresso boiler outlet is blocked	Clean as described in the section "Cleaning the boiler outlet"
	The filter is blocked	Clean as described in the section "Cleaning the filter"
	Limescale in the water circuit	Descale as described in the section "Descaling"
The appliance does not function and all the lights flash		With an extreme use, the appliance reaches a high temperature. Simply wait: the appliance will cool down automatically
The appliance does not function and all the lights flash for a long time	Abnormal machine conditions	Disconnect the appliance and contact authorised Customer Services.

### Warning

This content is compiled from multiple sources and is provided for reference purposes only. It may not be complete or fully applicable to all situations. If you are unable to resolve your issue, please contact the product manufacturer or an authorized service provider for official support.