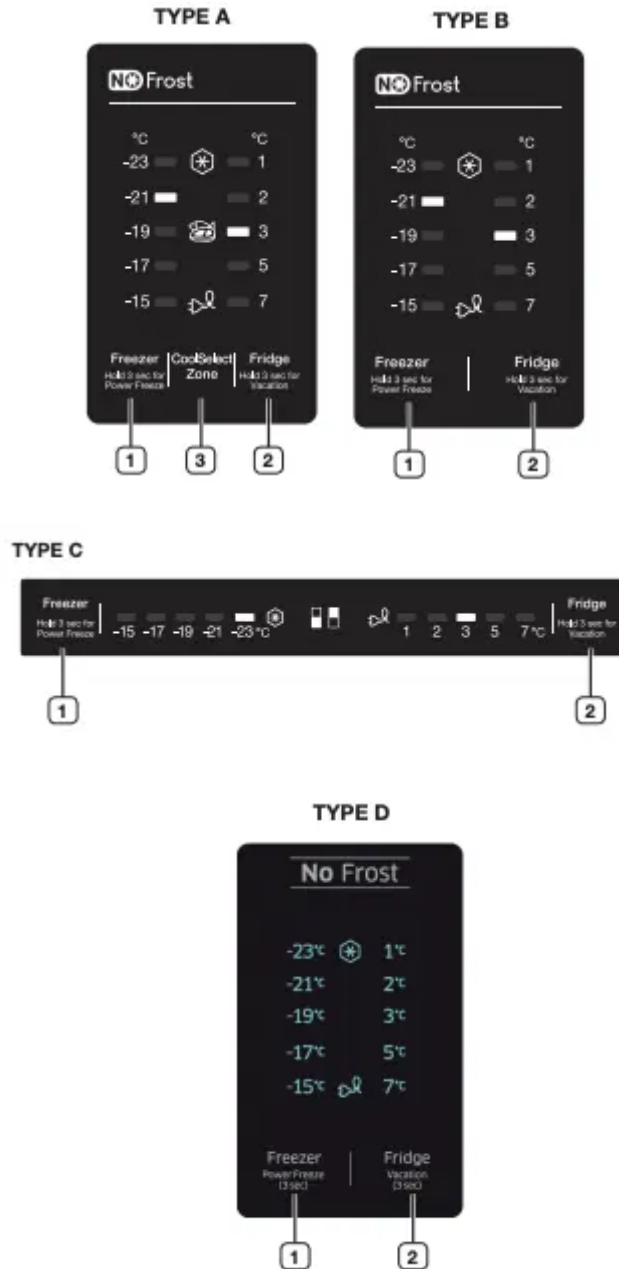


Operating your refrigerator

USING THE CONTROL PANEL



Each time you press a button on the control panel, you will hear a short beep.



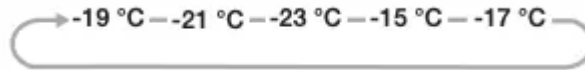
When you do not press any button, the LEDs of Freezer, Fridge and CoolSelect Zone become turned off for the minimum energy consumption. But LEDs of Power Freeze and Vacation are turned on at the corresponding functions. (Only for RB29****B, RB31****B, RB32****B model)



Depending on the model, the LED indicators of the freezer may not turn on when you open the freezer door.

1 Freezer

Press the Freezer button to set the freezer to desired temperature from range between $-15\text{ }^{\circ}\text{C}$ and $-23\text{ }^{\circ}\text{C}$. Default set temperature is set on $-19\text{ }^{\circ}\text{C}$ and each time you press the Freeze button, temperature will be changed in the following order and temperature indicator will display the desired temperature.



Press this button for 3 seconds to activate the Power Freeze function. Power Freeze indicator (❄️) will light up and the refrigerator will speed up the time to needed to freeze products in the freezer. This function will be activated for 50 hours and freezer indicator will not change display. This function switches off automatically. When the Power Freeze process is completed, the Power freeze indicator switches off and the freezer switches back to the previous temperature setting. When you use this function, the energy consumption will increase. Remember to turn it off when you do not need it and return the freezer to your original temperature setting. To deactivate this function, press the Freezer button for 3 seconds. If you need to freeze large amount of food stuff, activate Power Freeze function 20 hours before.

2 Fridge

Press the Fridge button to set the fridge to desired temperature between $1\text{ }^{\circ}\text{C}$ and $7\text{ }^{\circ}\text{C}$. Default set temperature is set on $3\text{ }^{\circ}\text{C}$ and each time to you press the Fridge button, temperature will be changed in the following order and temperature indicator will display the desired temperature.





Press this button for 3 seconds to activate the Vacation function. Vacation indicator (🏖️) will light up and the refrigerator will set the temperature to under $17\text{ }^{\circ}\text{C}$ to minimize you are going on a long vacation or business trip or you do not need to use the refrigerator. While Vacation function is activated, freezer compartment remains on. Vacation function will be automatically deactivated if you adjust fridge temperature while Vacation function is on. Make sure to remove foods in the fridge compartment before using Vacation function.



While Vacation function is activated, Cool Select Zone does not work. Vacation function is deactivated, Coolselect Zone function will be activated.

3 Coolselect Zone

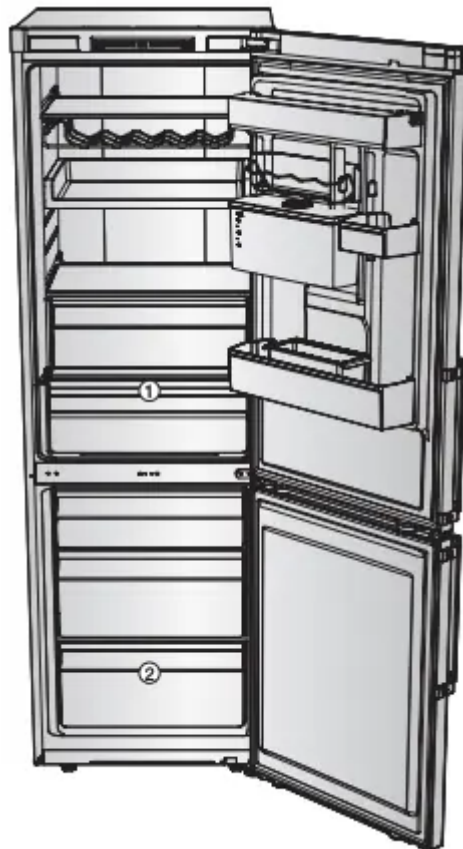
Press Coolselect Zone button to activate the Coolselect Zone function. Coolselect Zone indicator () will light up and then you can store meat and fish. Press Coolselect Zone button again, Coolselect Zone indicator () will light off and then you can store vegetable.



While Vacation function is activated, pressing Coolselect Zone button does not work.

Temperature Alarm (Only for Coolselect zone function model, RB37J59**, RB37J5**5**, RB31&RB29 series)**

- When the freezer compartment is too warm because there has been a power failure, the temperature LED are blinking and the alarm sounded. Press Freezer or Fridge button to stop them.
- This warning may occur:
 - When the refrigerator is turned on.
 - The freezer compartment is too warm due to a power failure



- Some of the feature such as Water tank and Cool Select Zone (1) can be different and may not be available depending on the model.
- The fruits or the vegetables could get frozen in Cool Select Zone and Fresh Zone. (Optional)
- To freeze large quantities of food quickly, use the very bottom drawer (2) where food freezes particularly quickly.

ADDITIONAL SHELF



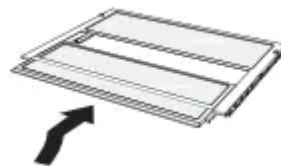
If the additional shelf is provided in optional, you can remove all drawers except for the bottom drawer (2) and place the additional shelf just above the bottom drawer. It does not affect thermal and mechanical characteristics. A declared storage volume of the freezer compartment is calculated with these parts removed for the additional shelf provided models.



USING THE FOLDABLE SHELF (OPTIONAL)

You can tuck in the foldable shelf if you need to accommodate taller containers or products on the shelf underneath.

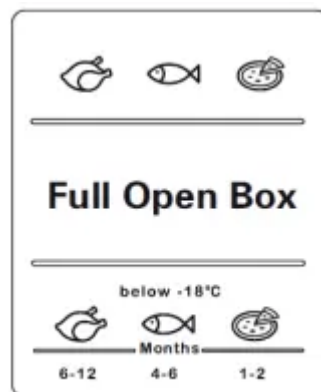
1. Slightly lift up the shelf and slide it inward.
2. You can simply pull the tucked in shelf to use the fully extended shelf.



Foldable shelf can fall out of the refrigerator, be careful when use and cleaning.

FEATURES OF THE FREEZER COMPARTMENT

Frozen-food mark on the Door panel



The figures above to the symbols indicate the permitted storage period of the produce in months. When purchasing frozen produce, observe the date of manufacture or sell-by date.

Freezing food

Freeze fresh, undamaged food only. Keep food which is to be frozen away from food which is already frozen. To prevent food from losing its flavour or drying out, place in airtight containers.

Packing food correctly:

1. Place the food in the packaging.
2. Press out all the air.
3. Seal the wrapping.
4. Label the wrapping with the contents and date

The following products are not suitable for wrapping food:

Wrapping paper, greaseproof paper, cellophane, refuse bags and used shopping bags.

The following products are suitable for wrapping food:

Plastic film, polyethylene blown film, aluminium foil and freezer tins. These products can be purchased from your dealer.

The following products are suitable for sealing the wrapped food:

Rubber bands, plastic clips, string, cold-resistant adhesive tape or similar. Bags and polyethylene blown film can be sealed with a film sealer.

Shelf life of frozen food

Storage duration depends on the type of food. At a temperature setting of -18 °C:

- Fresh Poultry(whole chicken), Fresh meat (steaks, Roasts) : up to 12 months
- Fish(Lean fish, Cooked fish), Fresh shrimp, scallops, squid: up to 6 months
- Pizza, Sausage: up to 2 months

Storage duration is referred to FDA web site (<http://www.fda.gov/>).



If you do not follow this period, you will have food poisoning sounds a bit extreme.

Purchasing and storing deep-frozen food

When purchasing frozen food, observe the following:

- Check that the packaging is not damaged.
- Check the sell-by date.
- The temperature of the supermarket freezer should be below -18 °C or lower. If not, the shelf life of the frozen food is reduced.
- Purchase deep-frozen food last. Wrap food in newspaper or place in a cool bag and take home.

- At home immediately place deep-frozen food in the freezer compartment. Consume the frozen food before the use-by date expires.

Thawing frozen food

Depending on the type and application, select one of the following options:

- At room temperature.
- In the refrigerator.
- In an electric oven, with/without fan assisted hot-air.
- In a microwave oven.

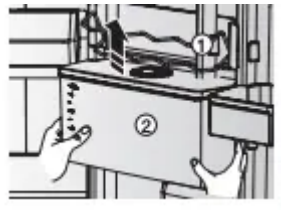


Do not refreeze food which is beginning to thaw or which has already thawed. The food cannot be refrozen until it has been prepared (boiled or fried). Do not store the frozen products longer than the max storage period.

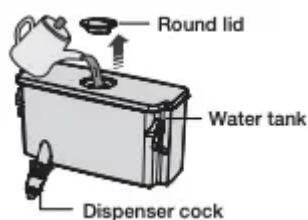
USING THE WATER DISPENSER (OPTIONAL)

With the water dispenser, you can obtain chilled water easily without opening the refrigerator door.

- Lift up the Can Carry (1).
- Lift up and pull out the water tank (2).

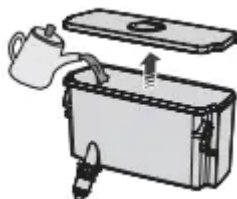


- Hold the handgrips on both sides to lift out the water tank.
- Clean the inside of water tank before using it for the first time.
 - Fill the water tank with water, ensuring that it is in a stable position, allowing for the extended water supply outlet.
- Fill with water up to 4.5 L. If it is filled higher than this, it may overflow when the lid is closed.
- If water dripping occur after first filling, the water tank pour some water approximately 500 ml.
- It is impossible to fill the tank with water while it is positioned in the refrigerator.
 - Method 1.
- Fill the water lifting the round lid in the arrow direction to open.



- Method 2.

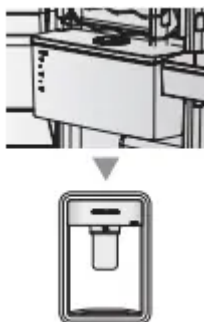
- Please fill the water after holding and lifting the large lid to open it.



When assembling the water tank after cleaning, make sure the Dispenser is well sealed. It may cause water leak.

- Close the refrigerator door after fitting the water tank.

- Confirm that the dispenser cock is outside after closing the door.



Fix water tank to the fridge door tightly. If not, water tank may not be operate correctly. Do not use the refrigerator without the water tank. If not, it may cause an efficiency problem.

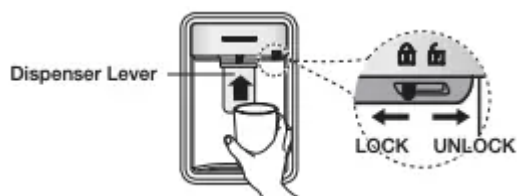


Do not fill anything other than water as mineral water or purified water in the water tank.

- Place a glass underneath the water outlet and push gently against the dispenser lever with your glass. Make sure the glass is in line with the dispenser to prevent the water from bouncing out.

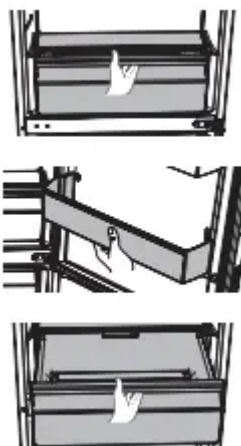


Check that the locking device is set to "UNLOCK". Water can only be dispensed on this setting.

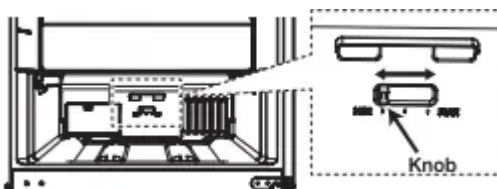


USING THE COOLSELECT DUO (OPTIONAL)

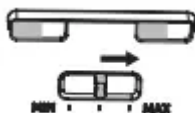
1. Disassemble the chilled room box. (Depending on the specification, the box can be easily disassembled when the guard on the right side is removed.)



2. Move the knob to the left or right side to manually set the desired temperature. (The temperature of the chilled room is highest when the knob is on left side, and lowest when the knob is on the right side.)



CAUTION If you set the knob greater than medium value, The Chilled Room inner temperature can be lower than a Fridge temperature, and the vegetables and fruit can be frozen.



3. After manually setting the desired temperature, put the box back to the original place. (If the guard is removed, assemble the guard into its original place.)



REMOVING THE INTERIOR PARTS



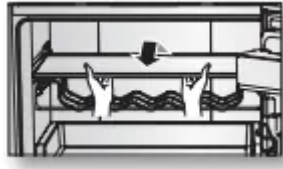
When assembling, put fridge shelves in the correct position and do not put them upside down. It may cause a personal injury or material damage.



When you put the shelves back, make sure the side with the label "Front" on it face the front of the refrigerator.

Shelves

Gently lift up the shelves with both hands and pull it toward you. (Glass shelf)



Do not put the shelves upside down or backwards. There is a risk of falling.

Door guards



Firmly grab the door guards with both hands and lift it up gently to remove the door guards.

Water tank



Lift up the Can Carry and then firmly grab the water tank with both hands and lift it up towards you gently to remove the water tanks.



Water tank may not be available depending on the model.

Drawers

Pull the drawers out fully then slightly lift it up to remove the drawers.



- If the drawers get stuck to door, remove drawer by lifting up after remove shelves.

CLEANING THE REFRIGERATOR



WARNING Do not use Benzene, Thinner or Clorox™ for cleaning. They may damage the surface of the appliance and can create a risk of fire.

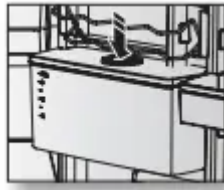


CAUTION Do not spray the refrigerator with water while it is plugged in, as it may cause an electric shock. Do not clean the refrigerator with benzene, thinner or car detergent for risk of fire.

1. Unplug the power cord of the refrigerator.
2. Slightly dampen a soft lint-free cloth or paper towel with water.

Do not use any kind of detergent to clean the refrigerator because that can discolor or damage the refrigerator.

3. Wipe the inside and outside of refrigerator until it is clean and dry.
4. Plug the power cord of the refrigerator.



- When water dispenser do not come out water, push on top of the water tank down slightly

REPLACING THE LED LAMP

When the interior or exterior LED lamp has gone out, do not disassemble the lamp cover and LED lamp by yourself.



Please contact your service agents.

reversing the door (optional)

REVERSING THE DOOR (OPTIONAL)

Before you reverse the refrigerator door, make sure to unplug the refrigerator. Samsung recommends that reversing of the door opening is only completed by Samsung approved Service providers. This will be on a chargeable basis and at the customers expense.

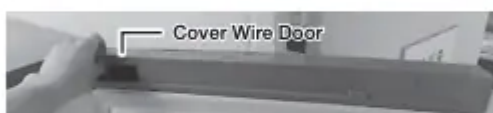


Any damage caused while attempting to reverse the door opening is not covered under the appliance manufactures warranty. Any repairs requested due to this circumstance will be completed on a chargeable basis at the customers expense.

1. Before attempting to reverse the refrigerator doors ensure that the refrigerator is disconnected from the main electricity supply and all food stuffs are emptied from inside the appliance.
2. If the customer does not feel confident to follow instruction in the user manual, a Samsung qualified service engineer must be contacted to carry out this change.
3. Do not plug in Refrigerator just after door reverse finished process and wait for at least one hour.

Disassembly of the refrigerator door

1. Remove the Cover Wire Door



* RB37* model only



2. Disassemble the Cap space Door.

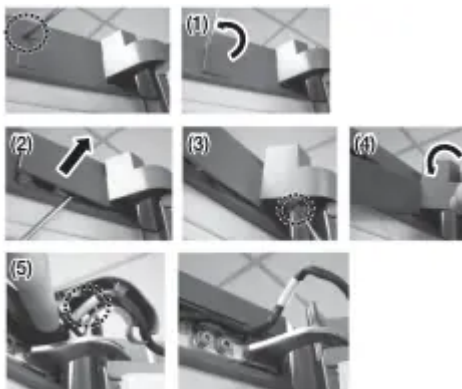


*** RB37* model only**



3. Remove the Cover Hinge to push a hook like below Pictures.

- Insert a flat-head screwdriver and put it back as shown in Figure #1.
- As shown in Figure #2, Lever up the cover and push a hook as shown in Figure #3. (Take care not to damage the Cover Hinge Wire by pushing it too hard)
- Disassemble it by pushing the A in Figure #4 by hand as Figure #5.



4. Disconnect the wiring connector for the fridge door. (Only on models with external display).



5. Remove the screws. (Be careful not to drop the door when you disassemble it.)



6. Remove the fridge door from the middle hinge by carefully lifting the door straight up.



The door is heavy, be careful not to injure yourself when removing the door.

7. Disassemble the middle hinge by removing the screws using a Phillips Head (+) screwdriver.



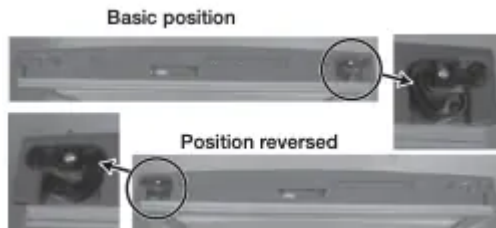
The freezer door may fall forward so please support the door.

8. Remove the freezer door from the bottom hinge by carefully lifting the door straight up.

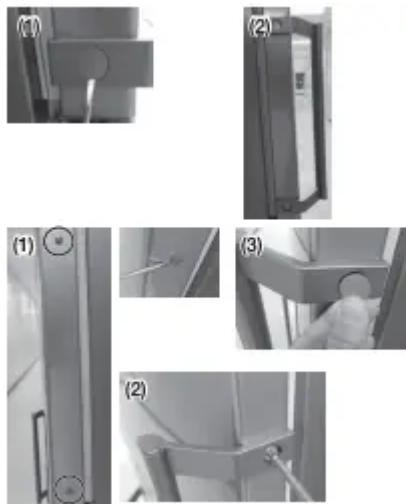



The door is heavy, be careful not to injure yourself when removing the door.


9. Switch the handles from the left to the right. Remove the screw on the bottom right side of the Fridge and Freezer Door Switch Lever Auto Closer from the right to the left. (Lever Auto closer, Screws each one.)




10. Remove the Cap Handle and the Screws by Flat-Head (-) screwdriver.

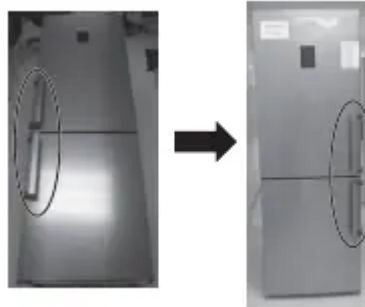


 Remove the Cap by Flat-Head (-) screwdriver and assemble the Handle and Cap-Handle.

 If the handle is not installed, skip steps 10 and 11 because they are not applicable.
Availability of these steps depends on the model.

 **CAUTION** Be careful the Scratch, when disassembling the Cap.

11. Assemble the Cap

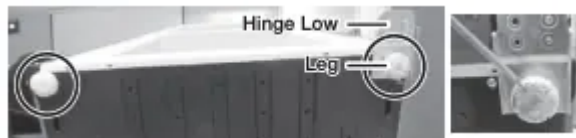


12. Switch the position of cap screw and cap. Pull out using a thin flat screwdriver.



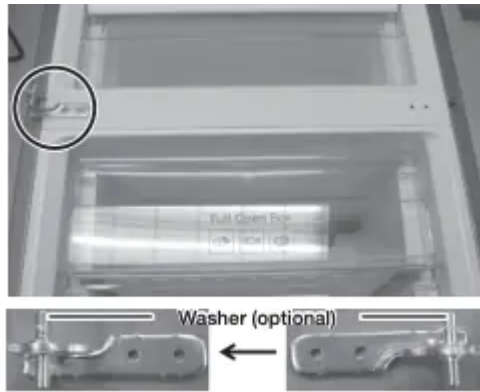
Be careful not to injure yourself during operation.

13. Lay the refrigerator carefully on it's back. Remove the leg (unscrew in an anti-clockwise direction) and the Hinge Low.



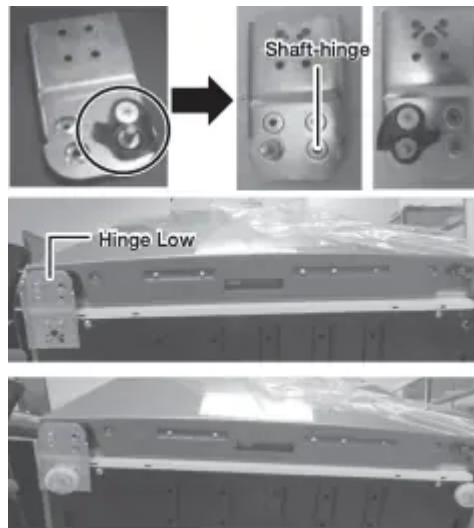
To protect the refrigerator damage, cut a large section of the cardboard carton and place it under the refrigerator.

14. Assemble the Middle hinge using the Phillips Head (+) screwdriver. (Assemble Washer upwardly before assembling Middle hinge.)

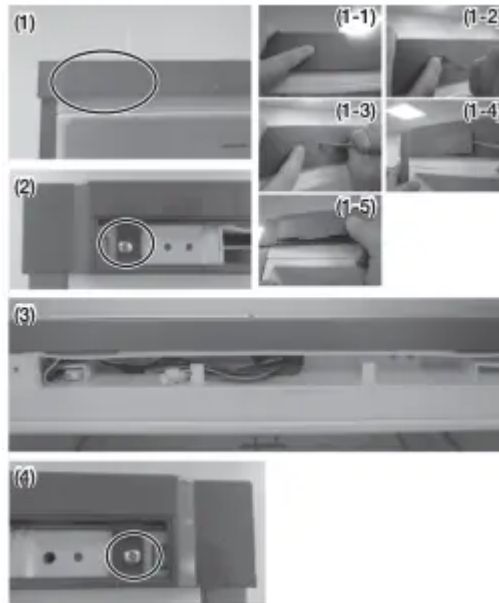


15. Switch the position of Bottom hinge and Leg. (Right -> Left) Assemble the Hinge Low after putting the Freezer Door in the middle hinge.

- Disassemble the Guide auto close and the Shaft-hinge.
- Assemble the Shaft-hinge and the Guide auto close like this on picture.



16. Put the Cap-Control out from the Cover Control like the picture (1). Remove the Screw and disassemble the Cover control (2), Switch the Wire door (3) direction to opposite side on Fridge Door (Door Display type only). Assemble the Cover-Control with Screw like a Picture (4).



17. Switch the Wire-Door Direction to opposite side like the Picture.



18. Use 11 mm wrench to separate the Top hinge shaft. Flip the Top hinge and reattach the Top hinge shaft.



18-1. Use 11 mm wrench to separate the Top hinge shaft and nut. Flip the Top hinge and reattach the Top hinge shaft and nut. (Only for RB33N*, RB34N*, RL33N* model)

Tighten the shaft (and nut) as much as possible using a wrench.

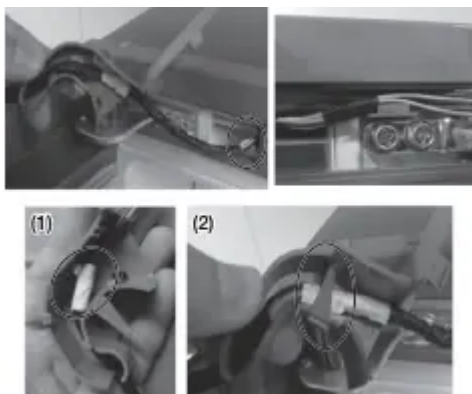
19. Insert the Top hinge to make the hole a little bigger and then put out the Top hinge to assemble the Fridge door.



Assembly steps

- 1. Assemble the Top hinge on the Fridge door.
- 2. Assemble the Middle hinge on the Fridge door.
- 3. Insert the Top Hinge on the Cabinet.
- 4. Assemble the screw.

20. Connect the wire and then insert it into the Cover-Control. Insert the wire into the Cover Hinge and then the white taping part should be located as below picture (1). Fold the Fixer not to disassemble as below picture (2).



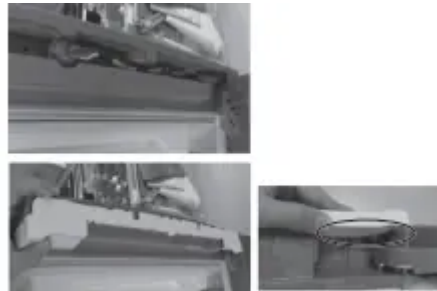
21. Assemble the Cover Hinge to match the Hinge



22. Assemble the Cap Space Door (additional part) on back side.



23. Insert the Cover Wire Door on the top of Fridge door and then push it to assemble completely. Check the wire position that should be located the back side of Cover Wire Door.



24. Assemble the Cap Control.



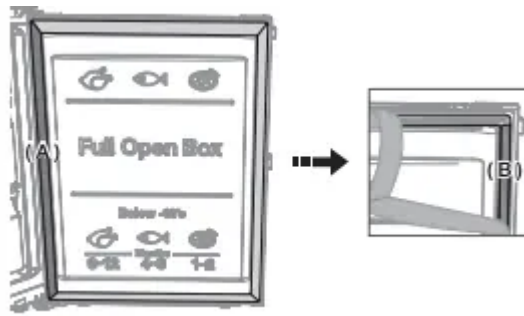
25. Detach the Fridge and Freezer gaskets and attach them after rotating 180°. Make sure the door gaskets are properly arranged. If not, there can be a noise or dew can be formed which affects performance of the unit.



26. Make sure the doors are working properly.



When you reverse the Freezer Door, detach the Freezer Door gasket and the inside left gasket (A). And then attach the inside gasket to the right (B). Attach the Freezer door gasket after rotating it 180° .



Troubleshooting

Before calling for service, review the checkpoints below. Any service calls regarding normal situations (No Defect Cases) will be charged to users.

General

Temperature

Fridge/freezer does not operate. Fridge/freezer temperature is warm.

Power cord is not plugged in properly.

- Properly plug in the power cord.

Temperature control is not set correctly.

- Set the temperature lower.

Refrigerator is located near a heat source or direct sunlight.

- Keep the refrigerator away from direct sunlight or a heat source.

Not enough clearance between refrigerator and sides/rear.

- Make sure there are at least 5 cm from the rear and sides.

Vacation mode is activated.

- Deactivate vacation mode.

The refrigerator is overloaded. Food is blocking the refrigerator vents.

- Do not overload the refrigerator. Do not allow food to block ventilation.

Fridge/freezer is over-cooling.

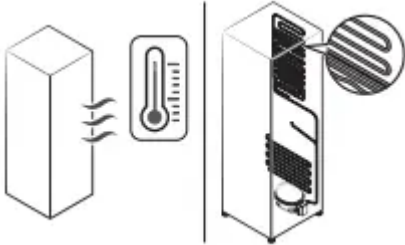
Temperature control is not set correctly.

- Set the temperature higher.

Interior wall is hot.

Refrigerator has heat-proof piping in the interior wall.

- To prevent condensation from forming, the refrigerator has heatproof piping in the front corners. If the ambient temperature rises, this equipment may not work effectively. This is not a system failure.



Odors

Fridge/freezer does not operate. Fridge/freezer temperature is warm.

Spoiled food.

- Clean the refrigerator and remove any spoiled food.

Food with strong odors.

- Make sure strong smelling food is wrapped airtight.

Frost

Frost around the vents.

Food is blocking the vents.

- Make sure no food blocks the refrigerator vents.

Frost on interior walls.

Door is not closed properly.

- Make sure food does not block the door. Clean the door gasket.

Fruits or vegetables are frozen.

Fruits or vegetables are stored in the Fresh/Chef Zone.

- The Fresh/Chef Zone is only for meat/fish.

Condensation

Condensation forms on the interior walls.

If door is left open, moisture enters the refrigerator.

- Remove the moisture and do not open the door for a long time.

Food with high moisture content.

- Make sure food is wrapped airtight.

Do you hear abnormal sounds from the refrigerator?

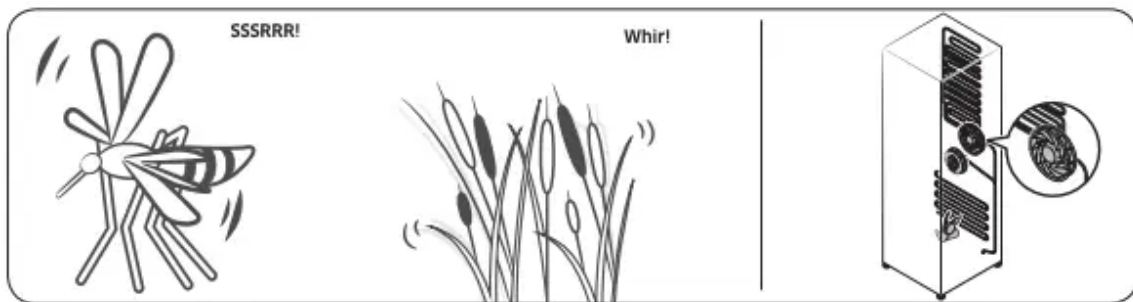
Before calling for service, review the checkpoints below. Any service calls related to normal sounds will be charged to the user.

These sounds are normal.

- When starting or ending an operation, the refrigerator may make sounds similar to a car engine igniting. As the operation stabilizes, the sounds will decrease.



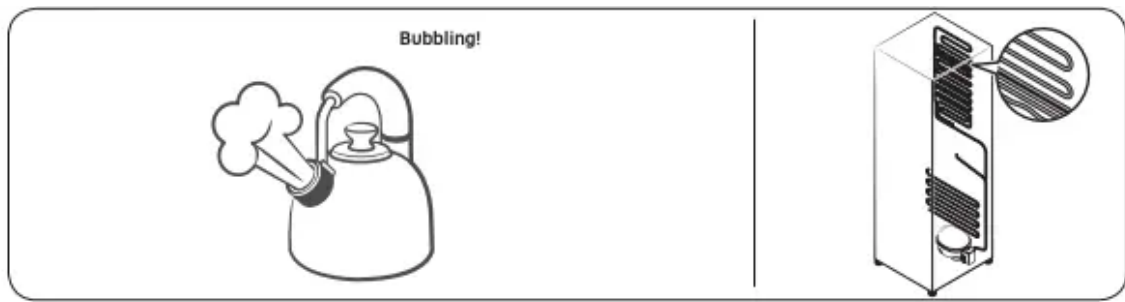
- While the fan is operating, these sounds may occur. When the refrigerator reaches the set temperature, no fan sound will occur.



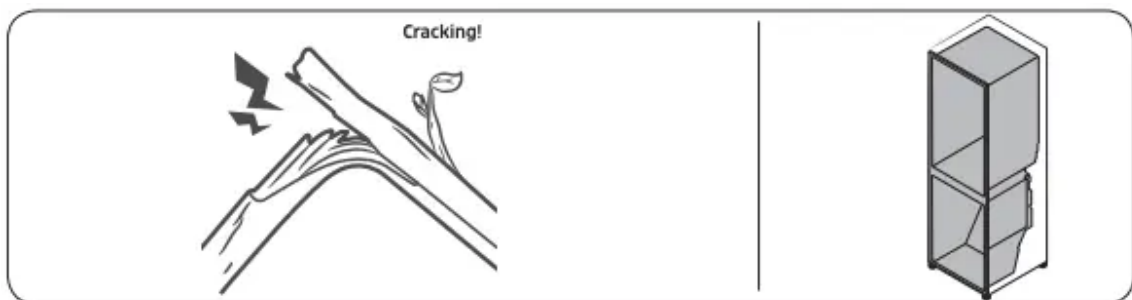
- During a defrost cycle, water may drip on the defrost heater, causing sizzling sounds.



- As the refrigerator cools or freezes, refrigerant gas moves through sealed pipes, causing bubbling sounds.



- As the refrigerator temperature increases or decreases, plastic parts contract and expand, creating knocking noises. These noises occur during the defrosting cycle or when electronic parts are working.



- For ice maker models: When the water valve opens to fill the ice maker, buzzing sounds may occur.
- Due to pressure equalizing when opening and closing the refrigerator door, whooshing sounds may occur.

Warning

This content is compiled from multiple sources and is provided for reference purposes only. It may not be complete or fully applicable to all situations. If you are unable to resolve your issue, please contact the product manufacturer or an authorized service provider for official support.