

## IMPORTANT SAFEGUARDS

When using electrical appliances, basic safety precautions should always be followed, including the following:

- Read all instructions.
- To protect against risk of electrical shock do not immerse cord, plugs or appliance in water or other liquid.
- Do not operate knife in water or under running water.
- Close supervision is necessary when any appliance is used by or near children.
- Unplug from wall outlet when not in use, before putting on or taking off parts and before cleaning.
- Unplug when changing blades.
- Avoid contacting moving parts.
- Do not operate appliance with a damaged cord or plug, or after the appliance malfunctions or has been dropped or damaged in any manner. Contact Consumer Support at the toll-free number listed in the warranty section. This appliance has important markings on the plug blade. The attachment plug or entire cordset (if plug is molded onto cord) is not suitable for replacement. If damaged, the appliance must be replaced.
- The use of attachments not recommended or sold by the manufacturer may cause fire, electric shock or injury.
- Do not use outdoors.
- Do not let cord hang over edge of table or counter.
- Do not let cord contact hot surface, including the stove.
- Blades are sharp. Handle carefully. Always handle blades with hand away from cutting edge.
- Always store blades with cutting edge away from you.
- Carefully route the power supply cord to avoid damage from the knife blades while cutting.
- This appliance is not intended for use by persons (including children) with reduced physical, sensory or mental capabilities, or lack of experience and knowledge, unless they have been given supervision or instruction concerning use of the appliance by a person responsible for their safety.
- Children should be supervised to ensure that they do not play with the appliance.

## SAVE THESE INSTRUCTIONS

This product is for household use only.

### POLARIZED PLUG (120V models only)

This appliance has a polarized plug (one blade is wider than the other). To reduce the risk of electric shock, this plug is intended to fit into a polarized outlet only one way. If the plug does not fit fully into the outlet, reverse the plug. If it still does not fit, contact a qualified electrician. Do not attempt to modify the plug in any way.

### TAMPER-RESISTANT SCREW

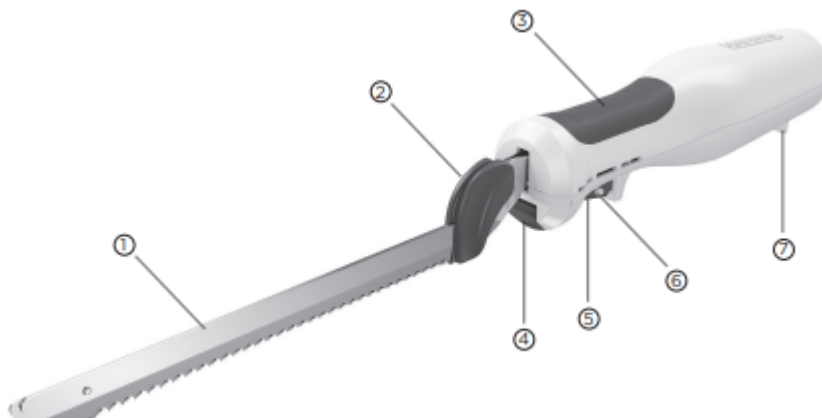
Warning: This appliance is equipped with a tamper-resistant screw to prevent removal of the outer cover. To reduce the risk of fire or electric shock, do not attempt to remove the outer cover. There are no user-serviceable parts inside. Repair should be done only by authorized service personnel.

### ELECTRICAL CORD

- a) A short power-supply cord is provided to reduce the risks resulting from becoming entangled in or tripping over a longer cord.
- b) Extension cords are available and may be used if care is exercised in their use.
- c) If an extension cord is used:
  - 1) The marked electrical rating of the extension cord should be at least as great as the electrical rating of the appliance; and
  - 2) The cord should be arranged so that it will not drape over the counter top or tabletop where it can be pulled on by children or tripped over.

**Note:** If the power cord is damaged, please contact the warranty department listed in these instructions.

## PARTS AND FEATURES

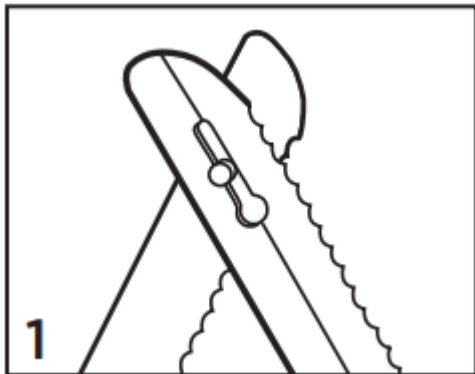


1. Slicing blade (Part # 178489-00)
2. Non-slip tabs
3. ComfortGrip™ handle
4. Blade release button
5. Operating trigger (ON/OFF)
6. Safety lock pin
7. Knife stand

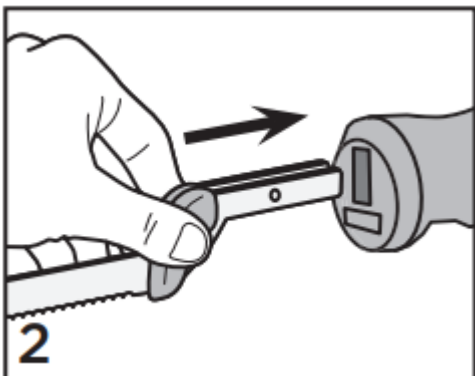
## GETTING STARTED

- Remove all packing material, any stickers, and the plastic band around the power plug.
- Remove and save literature.
- Please go to website to register your warranty.
- Wash all removable parts.

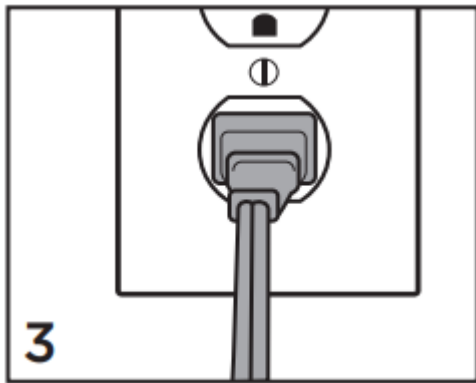
## HOW TO USE



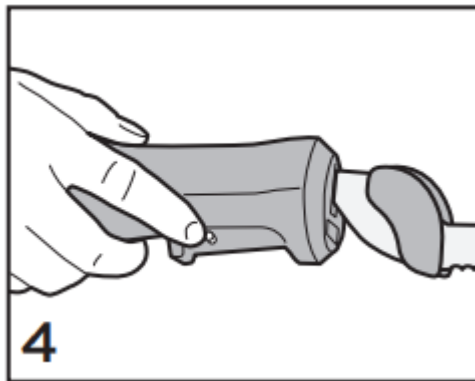
Slip the rivet at the top of one blade into the keyhole slot on the other.




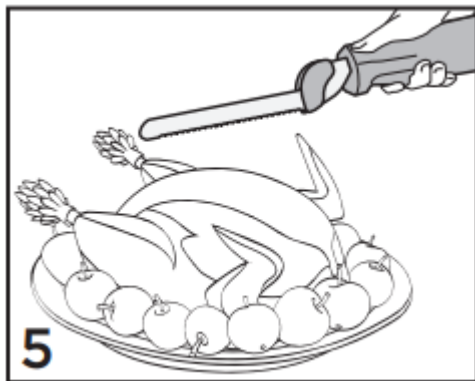
Holding the non-slip tabs, with the serrated blades edges down and away from you, slide blades into the knife base slots until both blades click into place.



Plug power cord into outlet.




With the serrated edges down, press the right side of the safety lock pin so that it extends towards  
Unlock .




Squeeze the operating trigger to turn the unit on. Guide the knife blades down through the food.

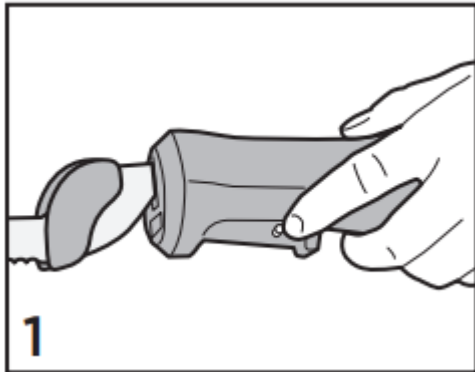
**NOTES:**


- When the safety lock pin is in the Lock  position, the operating trigger cannot be pressed inward, and will not operate, even when the knife is plugged in.
- Use a carving fork to hold the food.
- Use an even downward motion and don't saw at the food. The blades are designed to slide back and forth for cutting. Let them do the work for you.

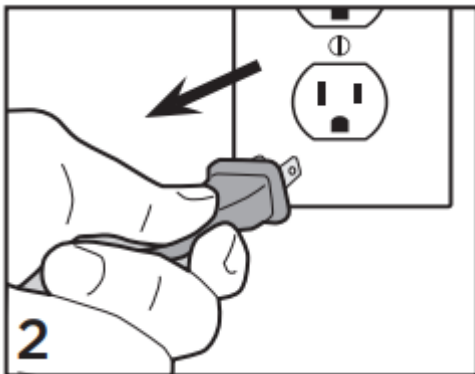
**CAUTION:**

- Make sure the knife is unplugged and the safety lock pin is in the Lock  position before inserting or removing blades.
- Never place your hands close to or over the blade to support it while operating the knife.

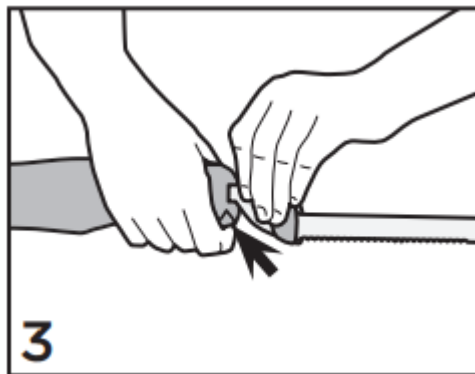
**HOW TO REMOVE THE BLADES**



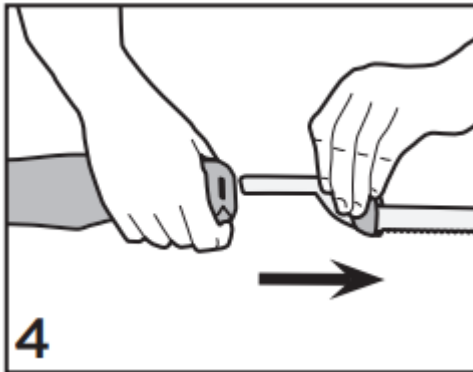
With the serrated edges down, press the left side of the safety lock pin so that it extends towards Lock .



Unplug power cord.

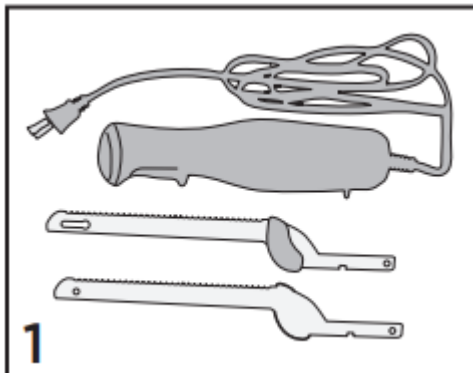



Press the blade release button on the knife handle, located just behind the non-slip tabs on the blades.

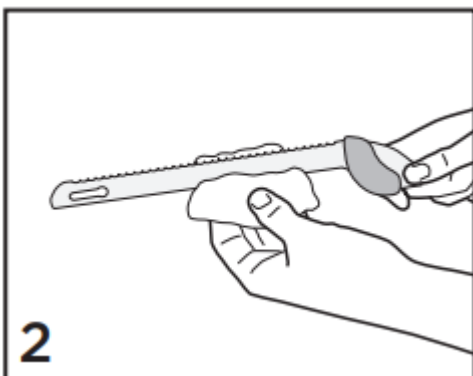


Grip the blades by the non-slip tabs and pull away from the knife handle.

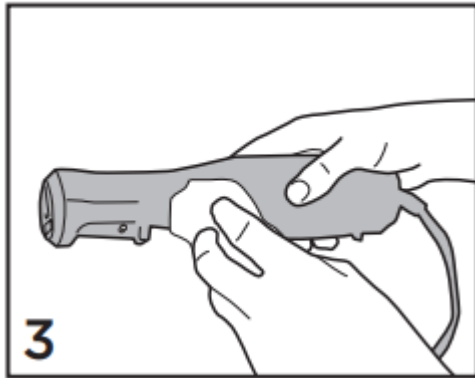
## CLEANING



Make sure safety lock pin is in Lock  position, knife is unplugged, and blades are removed.



Wash blades in hot, soapy water or in the dishwasher (top rack only).



Clean knife handle and cord with a damp cloth or sponge.

**Warning:** Electrical Shock Hazard Do not immerse the electric knife handle or cord in water or other liquid.

**Notice:** To avoid damaging electric knife, do not use abrasive cleaners or scouring pads.

**Warning**

This content is compiled from multiple sources and is provided for reference purposes only. It may not be complete or fully applicable to all situations. If you are unable to resolve your issue, please contact the product manufacturer or an authorized service provider for official support.