

INSTALLING THE MACHINE

Recommendations

- For energy and water saving, remove coarse residues on your dishes before placing the dishes into the machine. Start your machine after having fully loaded it.
- Use the pre-wash programme only when necessary.
- Place hollow items such as bowls, glasses and pots into the machine in such a way that they will face down.
- You are not recommended to overload your machine or load it in a way other than that which is indicated.

Items not suitable for dishwashing:

- Cigarette ash, candle leftovers, polish, paint, chemical substances, iron - alloy materials.
- Forks, spoons and knives with wooden, bone, ivory or nacre-coated handles; glued items, items soiled with abrasive, acidic or base chemicals.
- Plastic items that are not heat-resistant, copper or tin-coated containers.
- Aluminium and silver objects (they may discolour, become dull).
- Certain delicate glass types, porcelain with ornamental printed patterns as they fade even after the first wash; certain crystal items as they lose their transparency over time, cutlery that is not heat-resistant, lead crystal glasses, cutting boards, items manufactured with synthetic fibre.
- Absorbent items such as sponges or kitchen rags are not suitable for dishwashing.

Warning: Take care to buy dishwasher-proof sets in your future purchases.

Positioning the machine

When determining the installation place, choose an accessible place for easy loading and unloading of the dishes.

Do not put your machine in any location where there is the possibility of the room temperature falling below 0°C.

Before positioning, take the machine out of its packaging by following the warnings located on the package.

Position the machine close to a water tap or drain. You need to site your machine, taking into consideration that its connections cannot be altered once they are made.

Do not grip the machine by its door or panel in order to move it.

Take care to leave sufficient clearance from all sides of the machine for moving it back and forth during cleaning.

Make sure that the water inlet and outlet hoses do not get squeezed while positioning the machine. Also, make sure that the machine does not stand on the electrical cable.

Adjust the machine's adjustable feet so that it can stand level and balanced.

Proper positioning of the machine ensures problem-free opening and closing of the door.

If the door of the machine does not close properly, check if the machine is stable on the floor. If not, adjust the feet and ensure its stable position

Water connection

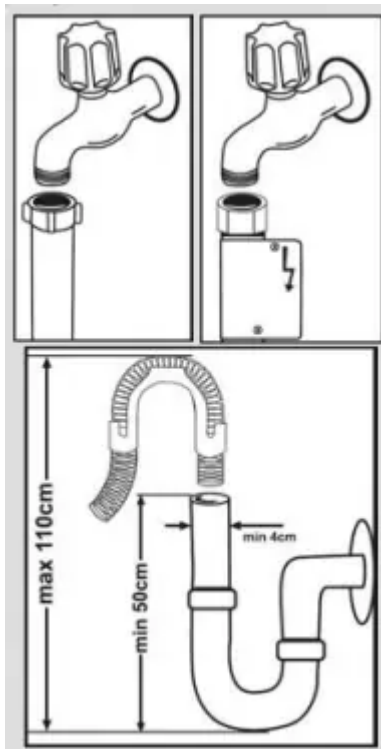
Indoor plumbing must be suitable for installing a dishwasher. Also, we recommend that you fit a filter at the entrance of your property so as to avoid any damage to your machine because of contamination (sand, clay, rust etc.) that might be occasionally carried in through the mains water supply or the indoor plumbing, and to prevent such complaints as yellowing and formation of deposits after washing.

Water inlet hose



Do not use the water inlet hose of your old machine. Use the new one supplied with your machine instead. If you connect a new or long - unused water inlet hose to your machine ,run water through it for a while before making the connection. Connect the water inlet hose directly to the water inlet tap. The pressure supplied by the tap should be at a minimum of 0.03 Mpa and and at a maximum of 1 Mpa.If the water pressure is above 1 Mpa,a pressure-relief valve should be fitted inbetween.

After making connections, the tap should be turned on fully and checked for water tightness. For safety purposes, we recommend that you turn off the water inlet tap when the machine is not going to be used for an extended period of time.



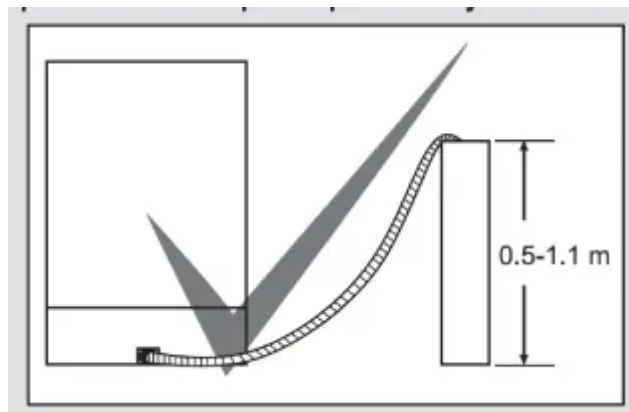
NOTE: An Aquastop water spout is used in some models. With Aquastop, a potentially dangerous tension exists. Do not cut the Aquastop water spout. Do not let it get folded or twisted.

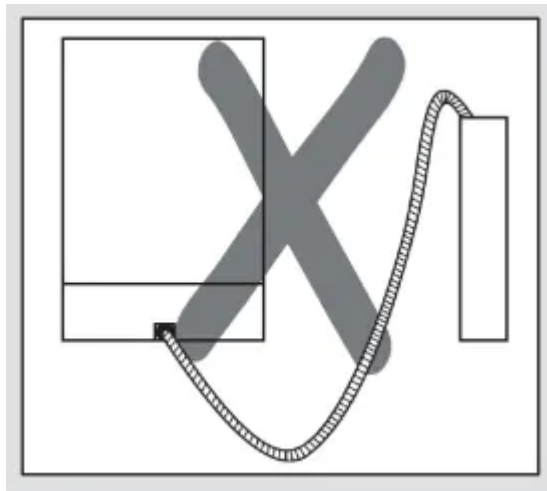
Water outlet hose

The water drain hose can be connected either directly to the water drain hole or to the sink outlet spigot. Using a special bent pipe (if available), the water can be drained directly into the sink via hooking the bent pipe over the edge of the sink. This connection should be between 50 and 110 cm from the floor plane.



Warning: When a drain hose longer than 4 m is used, the dishes might remain dirty. In that case, Sharp will not accept responsibility.





Electrical connection

The earthed plug of your machine should be connected to an earthed outlet supplied by suitable voltage and current. If there is no earthing installation, have a competent electrician to carry it out. In case of usage without earthing installed, our company will not be responsible for any loss of usage that might occur. The indoor fuse current value should be 10-16 A. Your machine is set according to 220-240 V. If the mains voltage in your location is 110 V, connect a transformer of 110/220 V and 3000 W inbetween. The machine should not be plugged in during positioning.

Always use the coated plug supplied with your machine. Running in low voltage will cause a decline in washing quality. The machine's electrical cable should be replaced by an authorised electrician only. Failure to do so may lead to accidents. For safety purposes, we recommend that you disconnect the plug when the machine is not going to be used for an extended period of time. In order avoid electric shocks, do not unplug when your hands are wet. When disconnecting your machine from the mains supply, always pull from the plug. Never pull the cord itself.

PREPARING THE MACHINE FOR USE

Prior to using the machine for the first time

- Check whether the electricity and supply water specifications match the values indicated by the installation instructions for the machine.
- Remove all packaging materials inside the machine.
- Set the water softener.
- Add 1 kg salt into the salt compartment and fill with water up to a level at which it will almost overflow.
- Fill the rinse aid compartment.

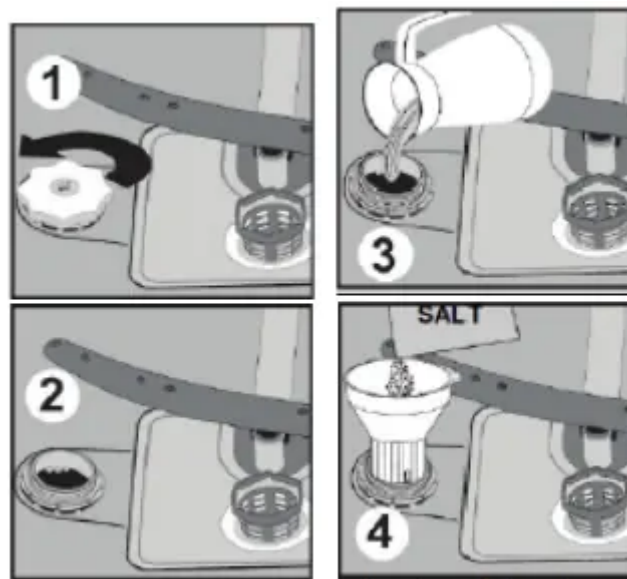
PREPARING THE MACHINE FOR USE

The importance of water decalcification

For a good washing function, the dishwasher needs soft, i.e. less calcareous water. Otherwise, white lime residues will remain on the dishes and the interior equipment. This will negatively affect your machines' washing, drying and shining performance. For this reason, a softener system used on dishwashers. The softener system has to be refreshed so that it operates with the same performance also during the next wash.

For this purpose, dishwasher salt is used.








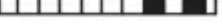



Filling with salt



Use softener salt specifically produced for use in dishwashers. To add softener salt, first remove the lower basket and then open the salt compartment cap by turning it counter clockwise.(1) (2) At first use fill the compartment with 1 kg salt and water (3) at overflowing level If available. Using a funnel (4) will make filling easier. After every 20th-30th wash, add salt into your machine until it fills up (approx. 1 kg) Fill the salt compartment with water at first use only. We recommend to use small grained or powder softener salt. Do not put table salt into your machine, otherwise the function of the softener compartment may decrease over time. When you start the machine, the salt compartment gets filled with water. Therefore, put the softener salt prior to starting your machine. This way, overflowing salt gets immediately cleaned up through the wash operation. If you will not wash any dishes immediately after putting salt, then run a short washing program with an empty machine in order to avoid corrosion on your machine due to the salt overflow while filling in the salt container. In order to understand whether or not the amount of softener salt in machine is sufficient, check the transparent section on the salt compartment cap. There is sufficient salt if the transparent section is green. Salt has to be added if it is not green.

Testing strip

The washing effectiveness of your machine depends on the softness of the tap water. For this reason, your machine is equipped with a system that reduces the hardness in mains water supply. The washing effectiveness will increase when the system is correctly set. To find out the water hardness level of water in your area, contact your local water board or determine water hardness level by using the test strip(if available).

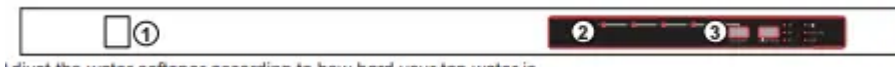
Open the testing strip	Run water through your tap for 1 min.	Keep the testing strip in water for 1.sec.	Shake the testing strip after taking it out of water	Water for 1 min.	Make your machine's water hardness setting according to the result obtained through the testing strip.		
					Level 1		No Lime
					Level 2		Very low lime content
					Level 3		Low lime content
					Level 4		Medium lime content
					Level 5		Lime content
					Level 6		High lime content

Adjusting salt consumption

Water hardness level	German hardness level dH	French hardness level dF	British hardness level dE	Hardness Level Indicator
1	0-5	0-9	0-6	P1-P5 leds are on.
2	6-11	10-20	7-14	P2-P5 leds are on.
3	12-17	21-30	15-21	P3-P5 leds are on.
4	18-22	31-40	22-28	P4-P5 leds are on.
5	23-31	41-55	29-39	P1-P4-P5 leds are on.
6	32-50	56-90	40-63	P2-P4-P5 leds are on.

Adjust the water hardness setting of your machine according to the level specified on the test strip.

NOTE: Hardness level is adjusted to level 3 as a factory setting.



Adjust the water softener according to how hard your tap water is.

Press the program selector button and keep it pressed down. 3 Meanwhile, turn on the machine by pressing the Power On/Off button. 2 Keep Start/Pause keys press until the leds "P1-P2-P3-P4-P5-end of program indicator" are on and off. 3 After the leds " P1-P2-P3-P4-P5-end of program indicator " have flashed 2 , release the program selector button. 3 Your machine displays the latest entered water hardness setting.

You can adjust the levels by the programme selector button 3 according to Table of Water Hardness Level Settings.

After adjusting the water hardness level, press on/off button to save the settings in memory. 1

Detergent usage

Use a detergent specifically designed for use in domestic dishwashers.

You can find powder, gel, and tablet detergents that have been designed for household dishwashers.

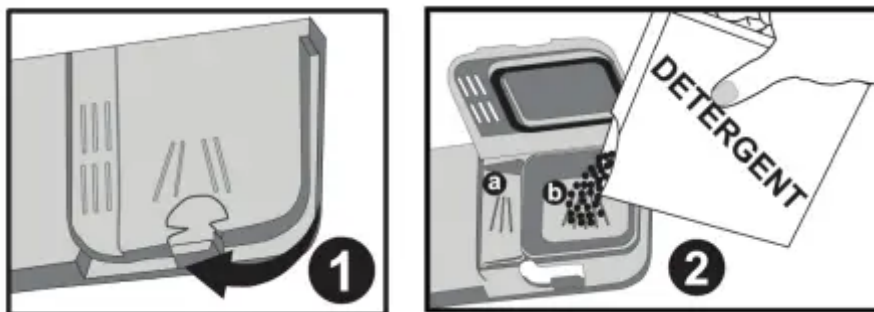
Detergent should be put into the compartment prior to starting the machine. Keep your detergents in cool, dry places out of reach of your children.

Do not overfill the detergent compartment; otherwise it may cause scratches on your glasses as well as lead to poorly dissolved detergent.

Should you need more information concerning the detergent you will use, contact the detergent manufacturers directly.

Filling the detergent compartment

Push the latch to open the detergent container as shown in the image. 1 The Detergent pod has level lines inside. The Detergent pod can take a total of 40 cm³ of detergent. Open the dishwasher detergent and pour into the larger compartment b 25 cm³ if dishes are heavily soiled or less 15 cm³ If dishes have been kept dirty for a very long time, have dried food wastes on them or you have overly loaded the dishwasher, pour 5cm³ detergent into the prewash compartment and start the machine. You may have to add more detergent into your machine, depending on the degree of soil and on the water hardness level in your area.



Combined detergents

Combined detergents may include various properties. Before using the detergent, read the instructions carefully. Generally combined detergents produce sufficient results under certain conditions only.

Points to consider when using this type of products:

- Check the specifications of the product whether it is combined or not.
- Check if the detergent used is appropriate for the hardness of mains water.
- Observe the instructions of products on the packaging.
- Always put the tablets into the detergent compartment in the detergent dispenser.
- You need to contact the manufacturers and find out about the suitable conditions of use.

- If you use appropriate products, they ensure savings in salt and/or rinse aid consumption.
- The scope of warranty for your machine does not cover any complaints caused by the use of these types of detergents.

Recommended usage: If you want to obtain better results while using combined detergents, add salt and rinse aid into your machine and adjust the water hardness setting and the rinse aid setting to the lowest position.



Solubility of the tablet detergents produced by different companies can vary depending on the temperature and time. Therefore, it is not recommended to use such detergents in short programs. It is more suitable to use powder detergents in such programs.

Warning: Should any problem, which you have not encountered before arise with the use of this type of detergent, contact the detergent manufacturer directly.

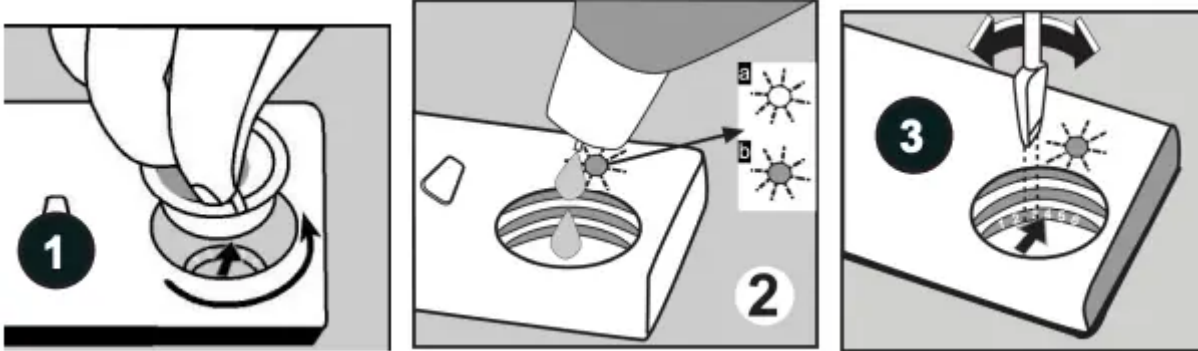
When you stop using combined detergents

- Fill the salt and rinse aid compartments.
- Adjust the water hardness setting to the highest position and run an empty-wash.
- Adjust the water hardness level.
- Make the suitable rinse aid setting.

Filling with rinse aid and making the setting

Adequate amount of rinse aid prevents the accumulation of white water drops, lime stains, white film strips. It also increases drying performance.

To add rinse aid, remove the rinse aid compartment cap by turning it.1 Fill the rinse aid compartment with rinse to add rinse aid level indicator becomes dark;2 Refit the cap and close it by turning it in a way that the nails correspond to one another. By checking the rinse aid level indicator on the detergent dispenser, you can understand whether or not your machine needs rinse aid. A dark indicator b means that there is rinse aid in the compartment, while a light indicator a shows that you need to fill the compartment with rinse aid. The rinse aid level adjuster can be set to a position between 1 and 6. The factory setting for rinse aid is the position 3.



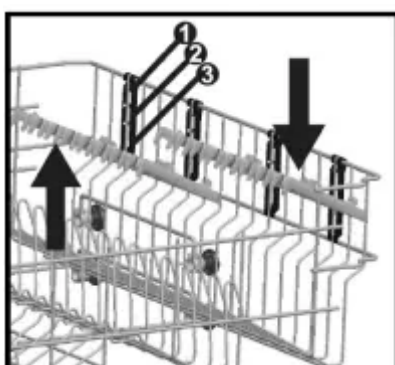
You need to increase the degree of the adjuster if water stains form on your dishes after a wash, whereas you need to decrease the degree if a blue stain is left when wiped by hand. **3 Warning:** Use only those rinse aid materials which are allowed for use in the machine. As rinse aid residues left as a result of overflowing will create extremely high amounts of foam and thus reduce the washing performance, remove the excess amount of rinse aid by wiping it with a rag.

LOADING YOUR DISHWASHER

LOADING YOUR DISHWASHER

Place dishes properly into the machine. There are two separate baskets to load dishes into your machine. The lower basket is for round and deep items. The upper basket is for thin and narrow items. You are recommended to use the cutlery basket in order to obtain the best result. To avoid any possible injuries, place long-handle and sharp-pointed knives with their sharp points facing down or horizontally on the baskets.

Warning: Place your dishes into your machine in a way that they will not prevent the upper and lower spray arms from spinning.

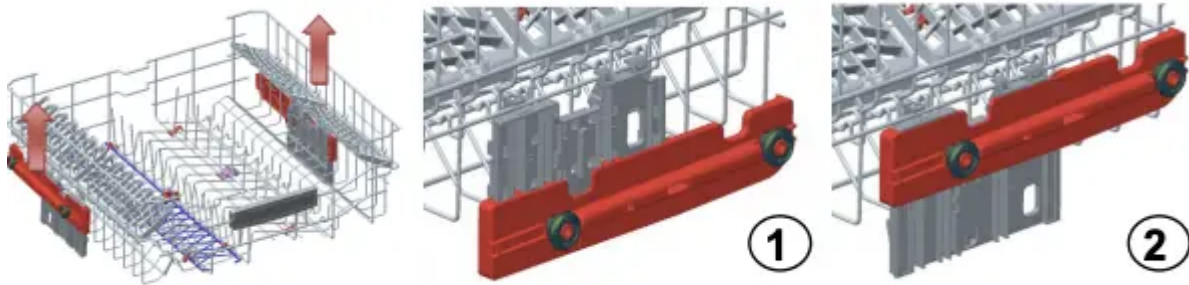


Dish rack

You can place different sizes of glasses under these racks thanks to the adjustable height feature. You can use racks in 3 different heights.

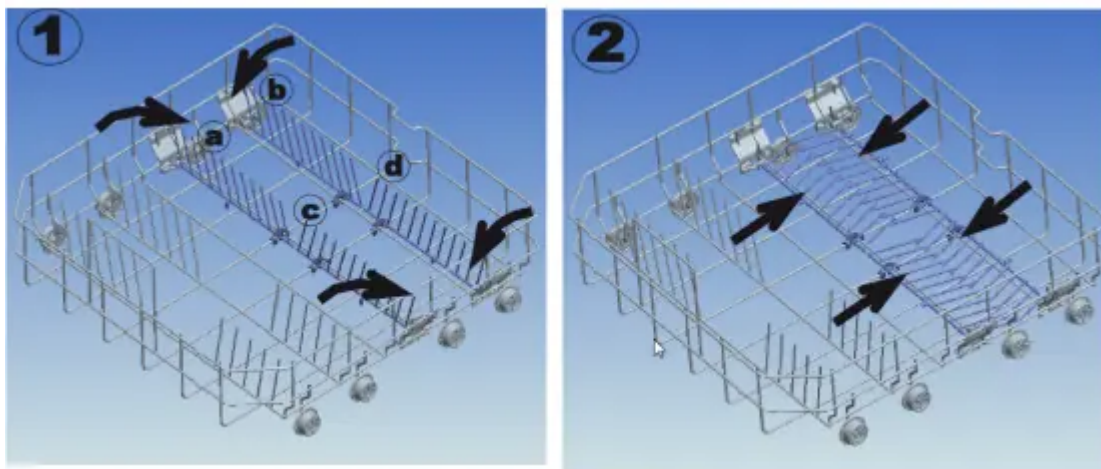
Top basket height adjustment while it is full

The basket height adjustment mechanism on the top basket of your machine is designed to let you adjust the height of your top basket upwards or downwards, without removing it from your machine when it is full, and create large spaces at the top or bottom area of your machine as needed. The basket of your machine is set to upper position in factory settings. In order to raise your basket, hold it from both sides and pull it upwards. In order to lower it, hold it from both sides again, and leave it. In the loaded basket adjustment mechanism, make sure that both sides are in the same position (up or down)



Lower Basket Folding Racks

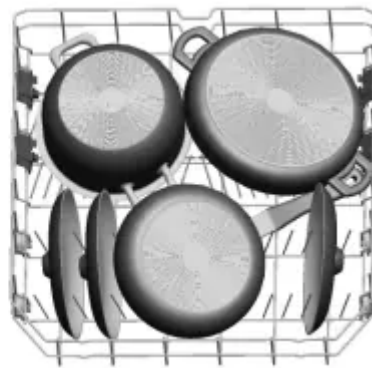
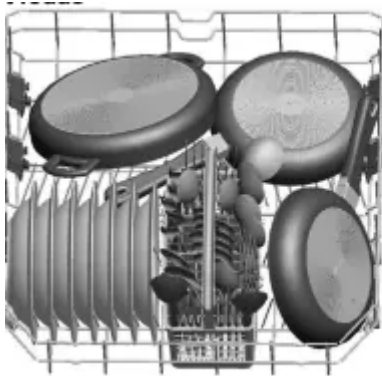
Folding racks consist of four parts in order to let you place big items more easily such as pots, pans, etc. If desired, each part can be folded separately in order to obtain larger space.



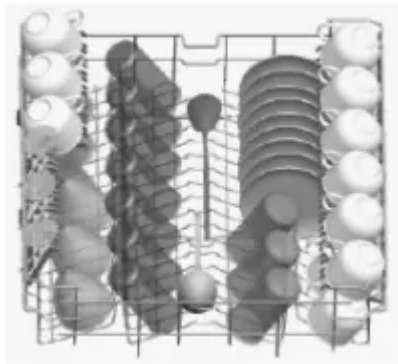
The movable cutlery basket can slide between the front and rear wires of the bottom basket.



Alternative basket loads Lower Basket

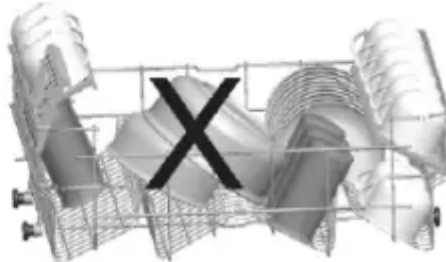
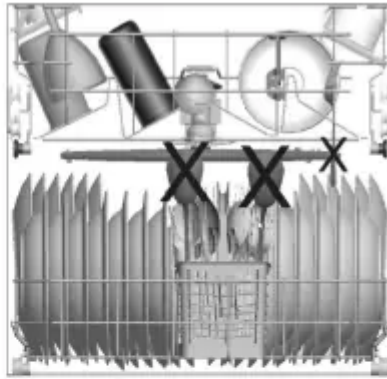
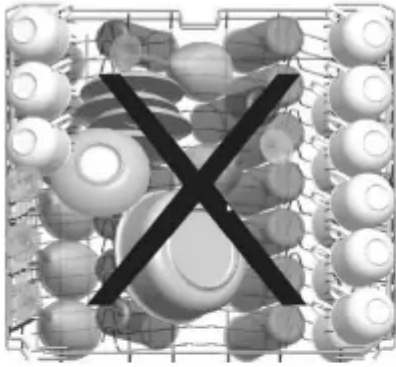


Top basket



Incorrect loads





Important Note for Test Laboratories

For detailed information on performance tests, please contact following address:

“dishwasher@standardtest.info” . In your email, please provide the model name and serial number (20 digits) which you can find on the appliance door.

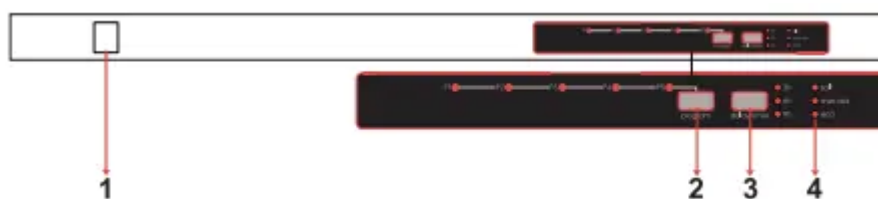
PROGRAMME DESCRIPTIONS

Programme items

Programme No			Reference		
Programme names and temperatures	Intensive 70° C	Express 65°C	Eco	Quick 30 min. 40°C	Prewash No Heat
Type of food waste	soups, sauces, pasta, eggs, potato and oven dishes, fried food	soups, sauces, pasta, eggs, potato and oven dishes, fried food	coffee, milk, tea, cold meats, potato and oven dishes, fried food	coffee, milk, tea, cold meats, vegetables, not kept for long	Pre-wash to rinse and loosen residue awaiting full load-then select a programme
Level of soil	high	medium	medium	small	medium
Detergent amount B: 25 cm ³ / 15 cm ³ A: 5 cm ³	A+B	A+B	A+B	B	A+B
	Prewash	65°C Wash	Prewash	40°C Wash	Prewash
	70°C Wash	Cold Rinse	50°C Wash	Cold Rinse	End
	Cold Rinse	Hot Rinse	Hot Rinse	Hot rinse	
	Hot Rinse	End	Dry	End	
	Dry		End		
	End				
Programme duration (min.)	127	50	187	30	15
Electricity consumption (kW hours)	1,55	1,35	0,90	0,90	0,02
Water consumption (liters)	16,5	12,7	12,0	12,4	4,5

Warning: Short programs do not include a drying step. The values declared above are the values obtained under laboratory conditions according to relevant standards. These values can change depending on conditons of product's use and environment (network tension, water pressure, water input temperature and environment temperature).

SWITCHING ON THE MACHINE AND SELECTING A PROGRAMME



- 1.) Power On/Off Button When the power on/off button is pressed, start /pause is lit.
- 2.) Programme Selection Button With the programme selection button, you can select a suitable program for your dishes.
- 3.) Delay Timer Button Thanks to the delay feature of your machine, you can delay the start time of the program for 3-6-9 hours by pressing the Delay button. When you press the Delay button, the 3h led comes on. If you continue pressing the Delay button, 6h-9h leds will come on respectively on each press. When you select the delay time and the desired

program, after closing the door the program with delay will be activated.. If you want you can firstly choose the programme and then. If you want to change or cancel the delay time, you can adjust by pressing the Delay timer button. When you delay a program, you can check the remaining time from the display. For example; when you select 9h delay time, 9h delay led comes on. When remaining time is down to 6h, then the 6h led comes on. In this way, you can follow up the remaining time.

Note 1: (only models with extra features): If you have used an extra feature on the latest washing program, this feature will remain also on the next washing program. If you do not want to use this feature on the newly selected washing program, press the selected feature button again, and check that the lamp on the button goes off.

4.) Salt Lack Warning Indicator In order to see whether softening salt in your machine is sufficient or not, check the salt lack warning light on the display. When the salt lack warning comes on, you need to fill the salt chamber.

Rinse aid Lack Warning Indicator

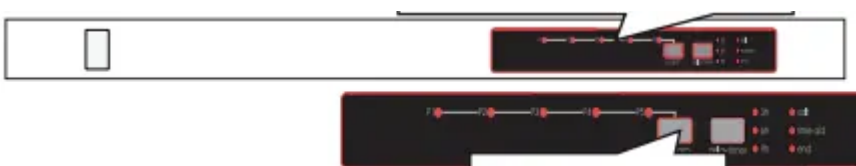
In order to check that there is sufficient rinse aid in your machine check the rinse aid lack warning light on the display. When rinse aid lack warning light starts coming on, fill the rinse aid chamber.

End of Program Indicator

The end of program indicator on the control panel turns on when the selected washing program is completed .Your machine also gives a buzzer sound for “5 times” when the program is completed.

Switching on the machine

When you select a program with the program selection button, the light of the selected program turns on and the end of program indicator turns off.

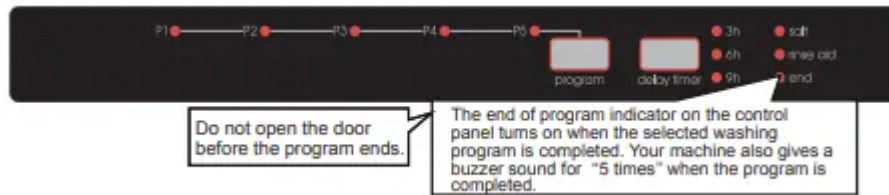


Once the power on/off key is pressed, the end of program indicator turns on.

- 1- Press the Power On/Off key.
- 2- Select the program suiting your dishes via the Program Selection button.
- 3- Close door. The programme starts automatically.

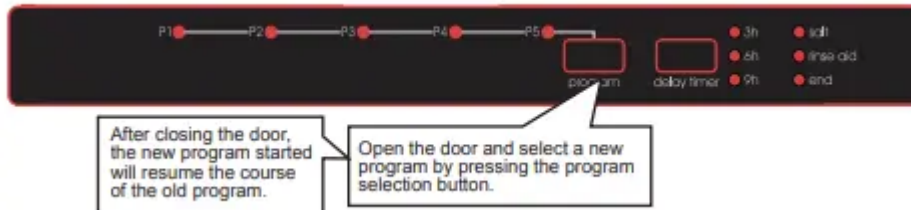
Program follow-up

You can follow the program flow using the program follow-up lamps located on the control panel.



Changing a programme

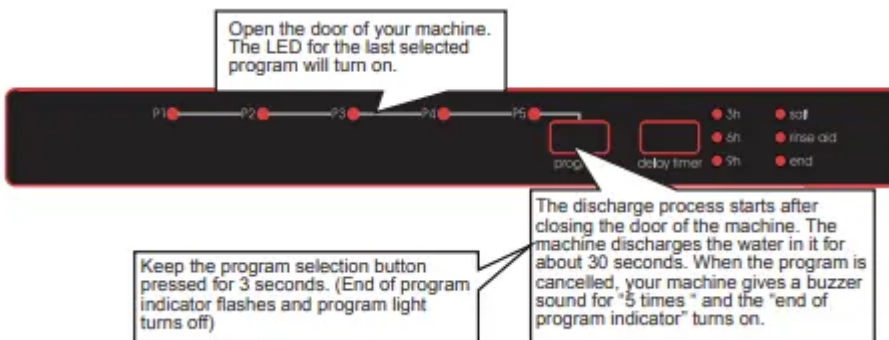
If you would like to change programs while a washing program is continuing.



Note: When the door of the machine is opened in order to stop the washing program before it is completed, first open the door slightly in order to avoid water spillage.

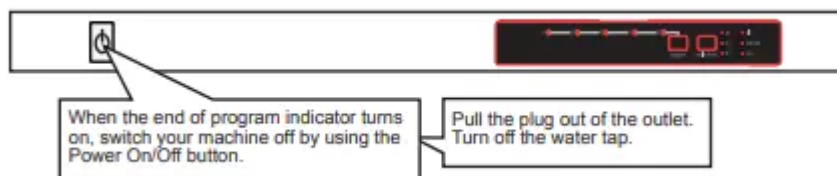
Changing a programme with resetting

If you would like to cancel a program while a washing program is resumed



Note: When the door of the machine is opened in order to stop the washing program before it is completed, first open the door slightly in order to avoid water spillage.

Switching the machine off



Note: After the buzzer sound indicates the end of the program when the washing program comes to an end (end indicator light is on), you can leave the door of your machine ajar in order to hasten the drying.

Note: If the machine door opens during washing or the power is turned off, the machine will return to the program in when the door is shut or the power is back.

Note: If energy is cut or the door is opened during the drying process, the program is terminated. Your machine becomes ready for new program selection.

MAINTENANCE AND CLEANING

Cleaning the machine regularly prolongs the machines service life.

Oil and lime scale may accumulate in the machines washing section. In case of such accumulation;

Fill the detergent compartment without loading any dishes into the machine, run the machine at high temperature. If this does not work, use special cleansing materials.

Cleaning the seals in the machine door,

Wipe the seals regularly by using a dampened cloth.

Cleaning machine,

Clean the filters and spray arms at least once a week.

Unplug your machine and turn off its tap before starting the cleaning.

Wipe with a fine cleaning material and a dampened cloth.

Filters

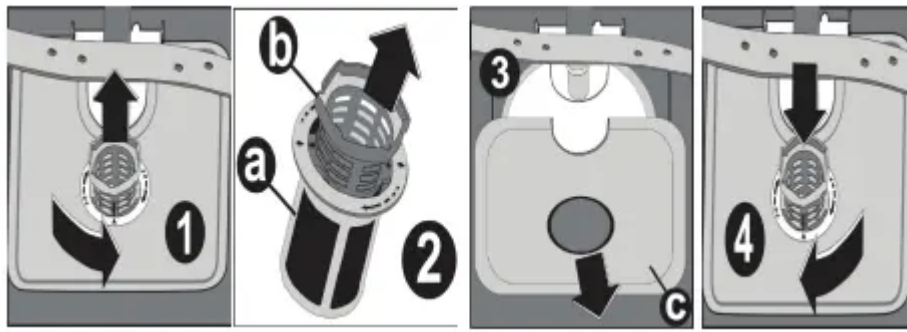
If any food wastes have remained on the coarse and fine filters, remove the filters and clean them thoroughly under the water tap.

- a. Micro Filter
- b. Coarse Filter
- c. Metal/Plastic Filter

To remove and clean the filter combination, turn it counter clockwise and take it out by lifting upwards. 1

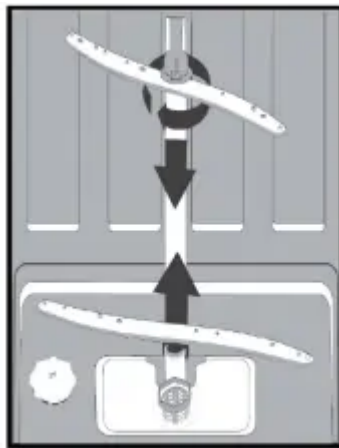
Pull and remove the metal/plastic filter. 3 Then pull the coarse filter out of the micro filter. 2 Rinse it with lots of water under the tap. Refit the metal/plastic filter. Insert the coarse filter into the micro filter in a way that the marks will correspond to one another. Attach the micro filter into the metal/plastic filter and turn to the direction of arrow and it is locked when the arrow on micro filter can be seen from across. 4

- Never use your dishwasher without a filter.
- Incorrect fitting of the filter will reduce the washing effectiveness.
- Clean filters are very important in terms of the proper running of the machine



Spray arms

Check the holes for the upper and lower spray arms. If there is any clogging, remove the spray arms and clean them under water. You can remove the lower spray arm by pulling it upwards, while the upper spray arm nut can be removed by turning the nut to the left. Be sure that the nut is perfectly tightened when refitting the upper spray arm.



Hose filter

Check the filter and the hose from time to time and clean them to prevent yellowing and formation of deposits after washing. To clean the filter, first turn off your tap and then remove the hose. After removing the filter from the hose, clean it under the tap. Insert the cleaned filter back into its place inside the hose. Refit the hose.

FAILURE CODES AND WHAT TO DO IN CASE OF FAILURE

P1	P2	P3	P4	P5		
☀	☀			☀	Inadequate water supply	<ul style="list-style-type: none"> • Make sure the water input tap is totally open and that there is no water cut. • Close the water input tap, separate the water input hose from the tap and clean the filter at the connection end of the hose. • Restart your machine, contact for service if the error resumes.
	☀		☀	☀	Continuous water input	<ul style="list-style-type: none"> • Turn off the tap. • Contact for service.
		☀	☀	☀	The waste water in the machine cannot be discharged.	<ul style="list-style-type: none"> • Water discharge hose is clogged. • The filters of your machine might be clogged. • Power off-on your machine and activate the program cancellation command. • If the error continues, contact for service.
☀		☀	☀	☀	Heater error	<ul style="list-style-type: none"> • Contact for service.
	☀	☀	☀	☀	Alarm is active against water overflow	<ul style="list-style-type: none"> • Power off your machine and turn off close the tap. • Contact for service.
☀	☀	☀	☀	☀	Faulty electronic card	<ul style="list-style-type: none"> • Contact for service.
☀				☀	Overheating error (temperature in the machine is too high)	<ul style="list-style-type: none"> • Contact for service.
☀			☀	☀	Faulty heater sensor	<ul style="list-style-type: none"> • Contact for service.

ERROR CODE P1, P2 , P5: Inadequate water supply

- Make sure the water input tap is totally open and that there is no water cut.
- Close the water input tap, separate the water input hose from the tap and clean the filter at the connection end of the hose.
- Restart your machine, contact for service if the error resumes.

ERROR CODE P2, P4, P5: Continuous water input

- Turn off the tap.
- Contact for service.

ERROR CODE P3, P4 , P5: The waste water in the machine cannot be discharged.

- Water discharge hose is clogged.
- The filters of your machine might be clogged.
- Power off-on your machine and activate the program cancellation command.
- If the error continues, contact for service.

ERROR CODE P1, P3 , P4 , P5: Heater error

- Contact for service.

ERROR CODE P2, P3, P4, P5: Alarm is active against water overflow

- Power off your machine and turn off close the tap.
- Contact for service.

ERROR CODE P1, P2, P3 , P4, P5: Faulty electronic card

- Contact for service.

ERROR CODE P1, P5: Overheating error (temperature in the machine is too high)

- Contact for service.

ERROR CODE P1, P4, P5: Faulty heater sensor

- Contact for service

If one of the program monitor lights is on and Start/Pause light is on and off,

- Your machine's door is open, shut the door.

If the programme won't start

- Check if the plug is connected.
- Check your indoor fuses.
- Be sure that the water inlet tap is turned on.
- Be sure that you have closed the machine door.
- Be sure that you switched off the machine by pressing the Power On / Off button.
- Be sure that the water inlet filter and lights the machine filters are not clogged.

If the “Wash/Dry” and “End” keep flashing

- The water overflow alarm is active
- Turn off your tap and contact the Sharp helpdesk.

If the control lights won't go out after a wash operation

- Check if the Power On/Off button is released.

If detergent residues are left in the detergent compartment

- Detergent has been added when the detergent compartment was wet.

If water is left inside the machine at the end of the programme

- The water drain hose is clogged or twisted.
- The filters are clogged.
- The programme is not finished yet.

If the machine stops during a wash operation

- Power failure.
- Water inlet failure.
- Program can be on standby mode.

If shaking and hitting noises are heard during a wash operation

- Dishes placed incorrectly.
- Spray arm hitting the dishes.

PRACTICAL AND USEFUL INFORMATION

If there are partial food wastes left on the dishes

- Dishes placed incorrectly into the machine, sprayed water did not reach the related places.
- Basket overly loaded.
- Dishes leaning against one another.
- Small amount of detergent added.
- An unsuitable, wash programme selected.
- Spray arm clogged with food wastes.
- Filters clogged.
- Filters incorrectly fitted.
- Water drain pump clogged.

If there are whitish stains on the dishes

- Insufficient detergent is being used
- Rinse aid dosage setting at a very low level.
- No special salt is being used despite the high degree of water hardness.
- Water softener system setting is at a very low level.
- Salt compartment cap not closed properly.

Won't dry

- A programme without a dry operation has been selected.
- Rinse aid dosage set too low
- Dishes unloaded too fast.

If there are rust stains on the dishes

- Stainless-steel quality of the dishes washed is insufficient.
- High rate of salt in the wash water.
- Salt compartment cap not properly closed.
- Too much salt spilt into the sides and into the machine while filling it with salt.
- Poor mains grounding.

Call for service if the problem still persists after taking the above measures or in case of any malfunction not described above.

PRACTICAL AND USEFUL INFORMATION

1. When you won't be using your machine for an extended period
 - Unplug the machine and then turn the water off.
 - Leave the door slightly ajar in order to prevent the formation of unpleasant smells.
 - Keep the machine interior clean.
2. Eliminating water droplets
 - Wash the dishes with the intensive programme.
 - Take all of the metal containers in the machine out.
 - Do not add detergent.
3. If you properly place your dishes into the machine, you will be using it in the best way in terms of energy consumption, washing and drying performance.
4. Clean all rough waste before you place dirty dishes to the machine.
5. Operate the machine after it is completely full.
6. Use the pre-washing program only when necessary.
7. Observe program information and average consumption values table when selecting a program.
8. Since the machine will reach high temperatures, it should not be placed near a refrigerator.
- 9- If the appliance is located in a place where the risk of freezing exists, you must completely drain the water that has remained in the machine. Turn off the water tap, disconnect the water inlet hose from the tap and allow the interior water to drain.

Warning

This content is compiled from multiple sources and is provided for reference purposes only. It may not be complete or fully applicable to all situations. If you are unable to resolve your issue, please contact the product manufacturer or an authorized service provider for official support.