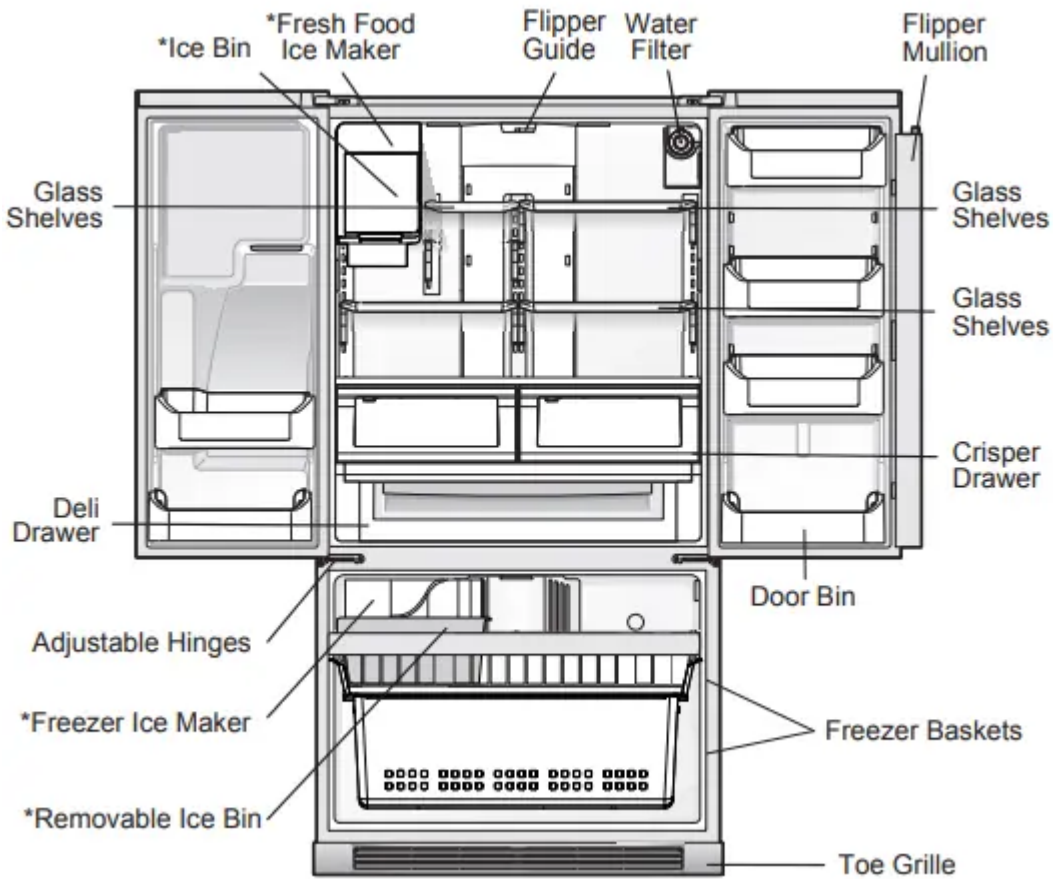


## FEATURES AT A GLANCE - BASELINE MODEL

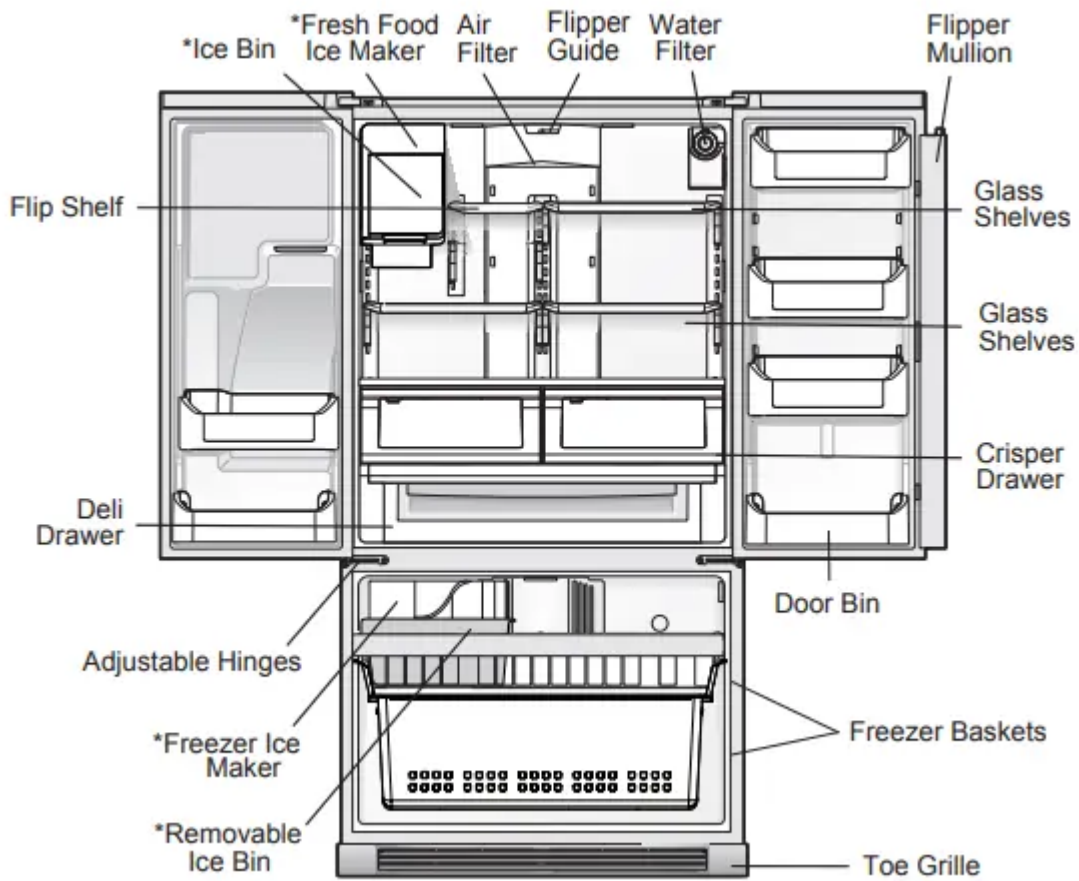
\*Features may vary according to model



## FEATURES AT A GLANCE - GALLERY MODEL

\*Features may vary according to model

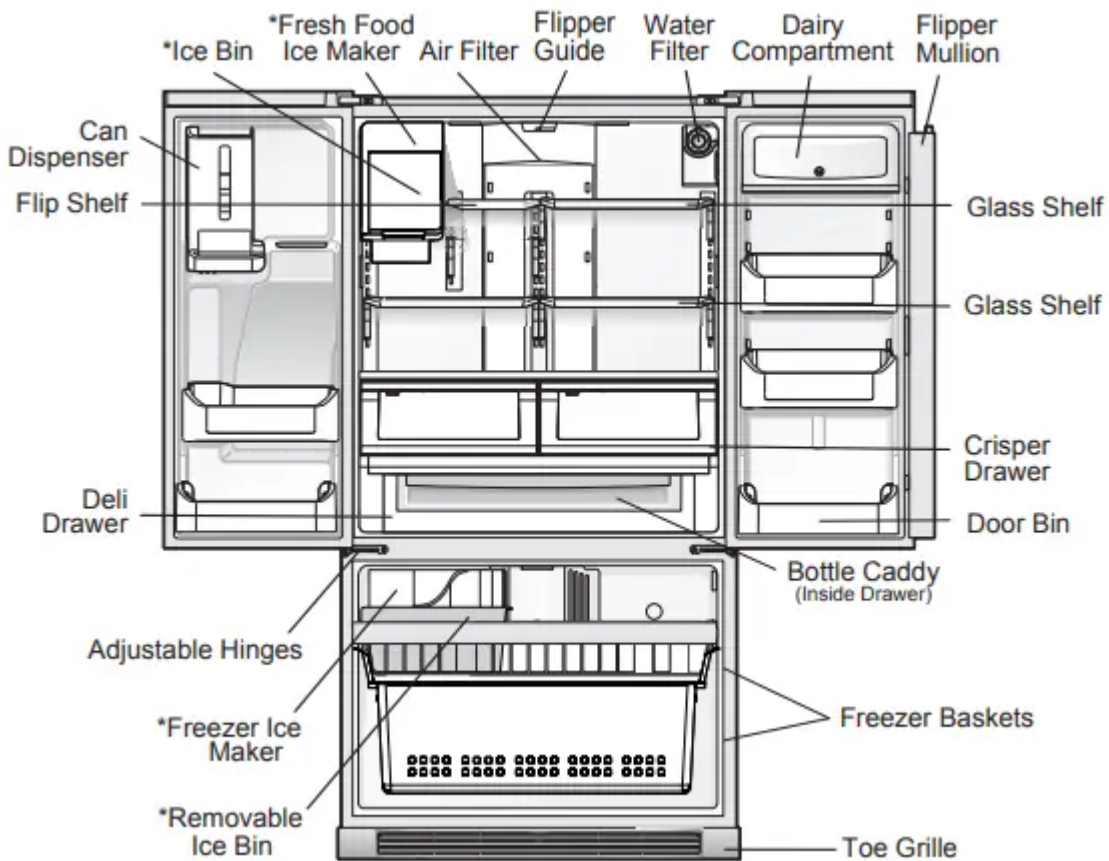




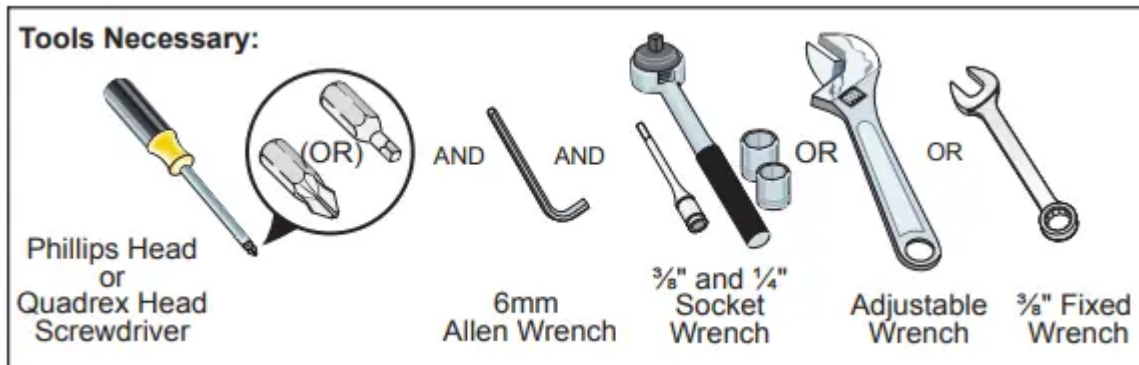
## FEATURES AT A GLANCE - PRO MODEL

\*Features may vary according to model

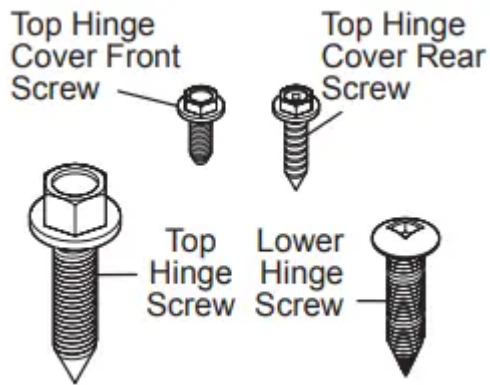




## INSTALLATION



### Components Provided:



This Use & Care Guide provides general operating instructions for your model. Use the refrigerator only as instructed in this Use & Care Guide. Before starting the refrigerator, follow these important first steps.

## Location

- Choose a place that is near a grounded electrical outlet. Do Not use an extension cord or an adapter plug.
- If possible, place the refrigerator out of direct sunlight and away from the range, dishwasher or other heat sources.
- The refrigerator must be installed on a floor that is level and strong enough to support a fully loaded refrigerator.
- Consider water supply availability for models equipped with an automatic ice maker. If you do not hook up water to the refrigerator, remember to turn the ice maker off.

## Installation

Allow the following clearances for ease of installation, proper air circulation, and plumbing and electrical connections:

Sides & Top :  $\frac{3}{8}$  inch

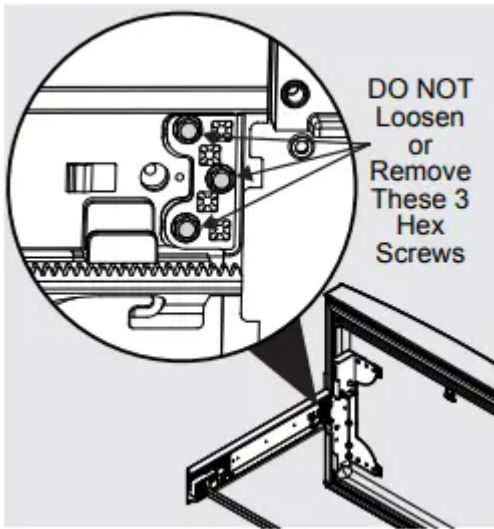
Back : 1 inch

NOTE If your refrigerator is placed with the door hinge side against a wall, you may have to allow additional space so the door can be opened wider.

## Door Opening

Your refrigerator should be positioned to allow easy access to a counter or table when removing food. For best use of drawers and freezer baskets, the refrigerator should be in a position where both the refrigerator and freezer doors can be fully opened.

CAUTION Do Not loosen or remove these 3 hex screws.



### Cabinet Leveling & Refrigerator Door Alignment (if necessary)

Guidelines for final positioning of your refrigerator:

- All four corners of the cabinet must rest firmly on the floor.
- The front should be slightly elevated to ensure that doors close and seal properly.
- Doors should align with each other and be level.

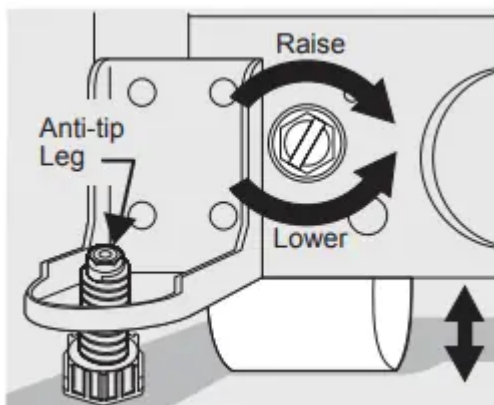
Most of these conditions can be met by raising or lowering the adjustable front rollers.

To level the cabinet using the front rollers:

- 1 Slightly open freezer drawer if the toe grille is installed. Lift the toe grille and gently pull forward.
- 2 Make initial cabinet adjustments by using the front roller height adjusting screws. Use a 3/8 inch socket wrench to turn the adjustment screws (1 per side).

To raise: turn adjustment screw clockwise.

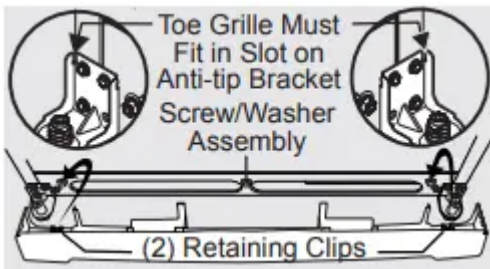
To lower: turn adjustment screw counterclockwise



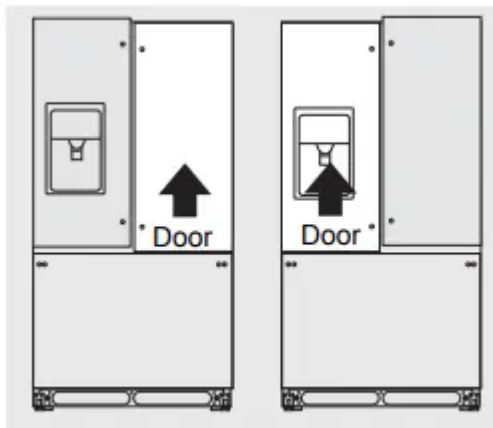
- 3 Ensure both doors are bind-free with their seals touching the cabinet on all four sides and that cabinet is stable.

4 After unit is leveled, lower anti-tip leg using a 3/8 inch socket wrench until it firmly contacts the floor.

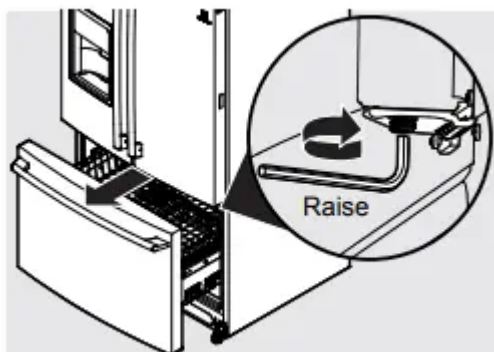
5 Install the toe grille by fitting into place.



To make final door height adjustments:

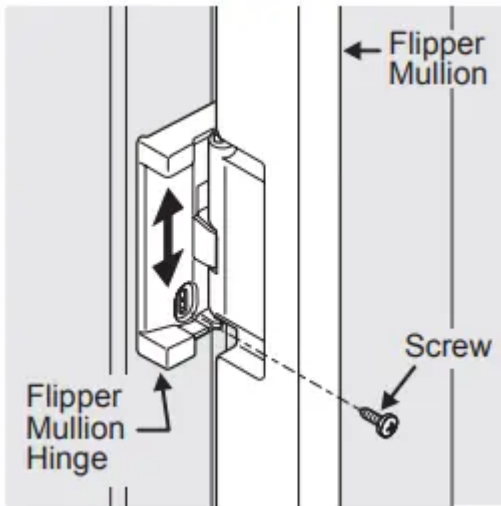


1. Open freezer drawer to make lower hinge visible.
2. Insert 6mm Allen wrench into the shaft of the lower hinge.
3. Adjust the height by turning clockwise or counterclockwise. Turning clockwise will lower the door. Turning counterclockwise will raise the door. Default setting is to the lowest height when you receive your appliance.

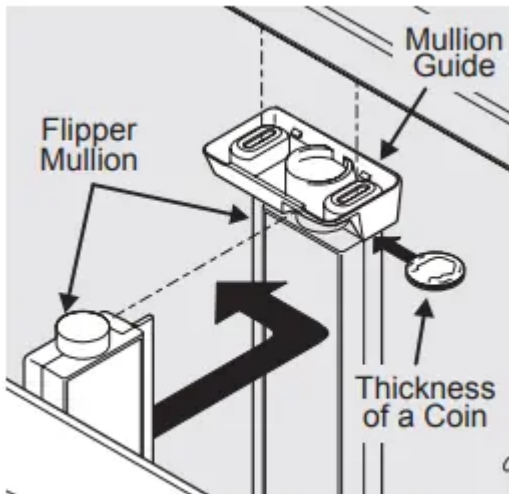


**To adjust the flipper mullion:**

- 1 Loosen the screw located on the flipper mullion hinge.



2 Adjust flipper mullion height. For proper connection with the flipper mullion guide, there should be a separation about the thickness of a coin (0.060 inches, or 1.5 mm) between the guide and flipper mullion.



**Adjusting Flipper Mullion Height**

3 Re-tighten screw.

## DOOR REMOVAL INSTRUCTIONS

### Getting through narrow spaces

If your refrigerator will not fit through an entrance area, you can remove the doors. Check first by measuring the entrance.

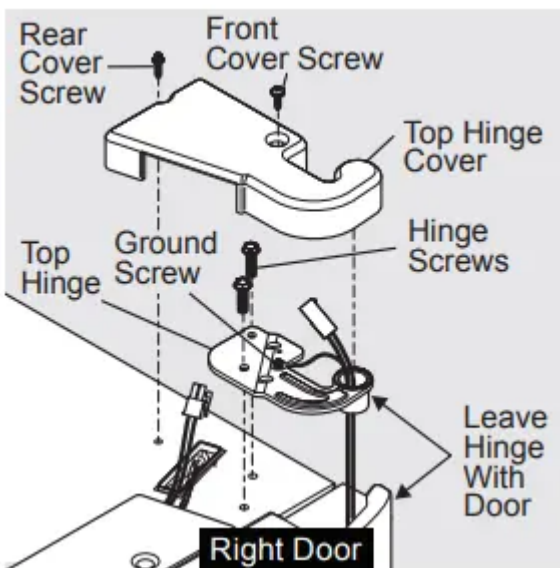
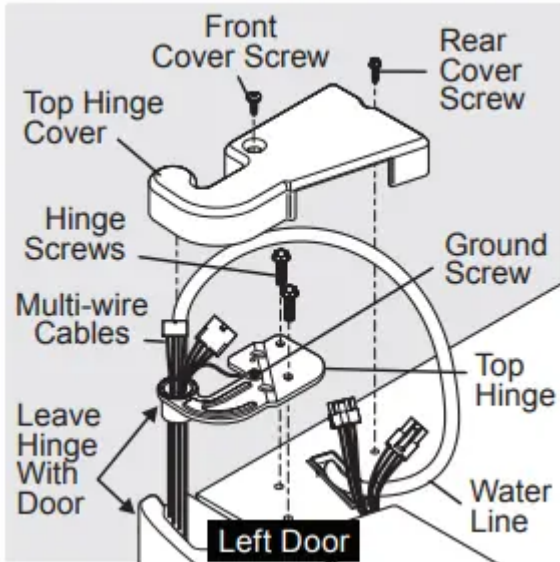
#### To prepare for removing the doors:

1. Make sure the electrical power cord is unplugged from the wall outlet.
2. Open both doors and remove the toe grille (as explained in the Installation Instructions that came with your appliance).

3. Remove any food from the door shelves. Close the doors.

**To remove the refrigerator top hinge cover:**

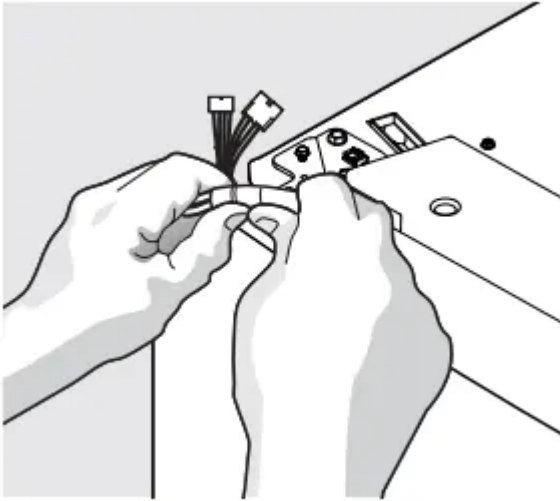
1. Remove the three screws from each cover over the top door hinges.
2. Lift hinge cover straight up and off.



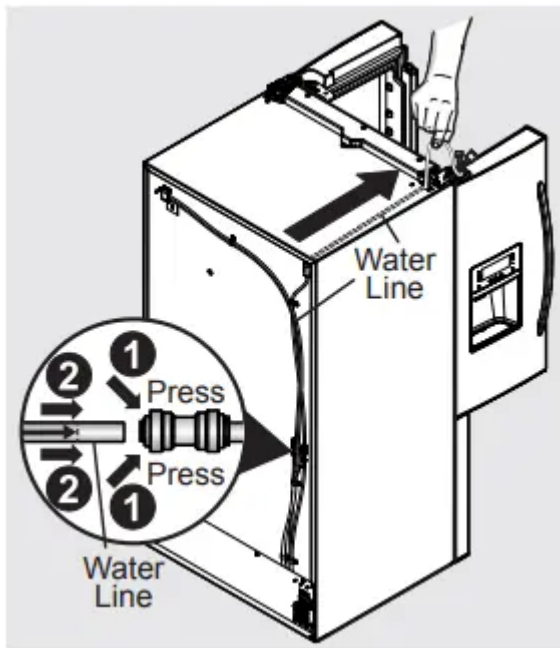
**To remove the refrigerator door:**

- 1 Remove top hinge covers. Trace lightly around the door's top hinges with a pencil. This makes reinstallation easier.
- 2 Disconnect the harness by grasping both sides of the connector firmly, depress the latch and pull apart.



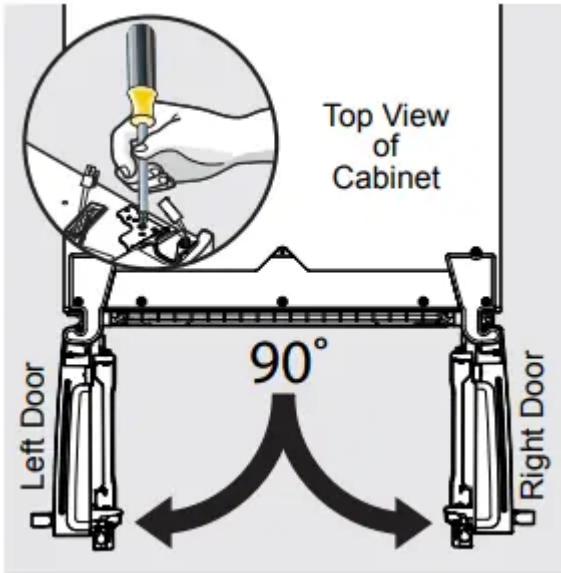


3 Detach the water tube from the connector located behind the refrigerator, the connector releases when you press inward on the connector's outer sleeve. Pull the water tube out toward the front of the unit.

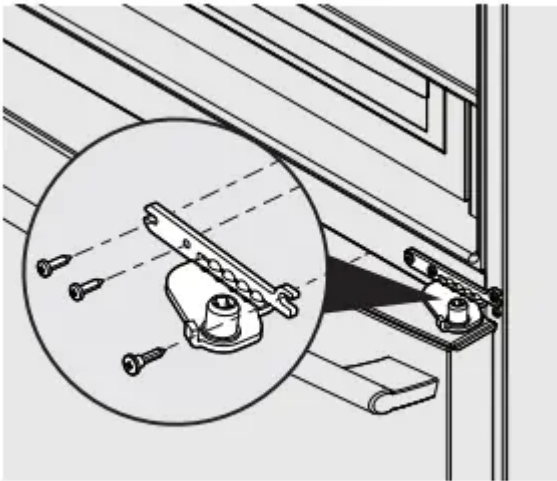


**IMPORTANT** Open the refrigerator doors to a 90 degree angle before lifting the doors off the bottom hinges and setting them aside.

4 Open the refrigerator doors to a 90 degree angle and remove the two screws from the top hinge. Lift and remove door from lower hinge.



5 Unscrew the three lower hinge screws and remove the hinge.

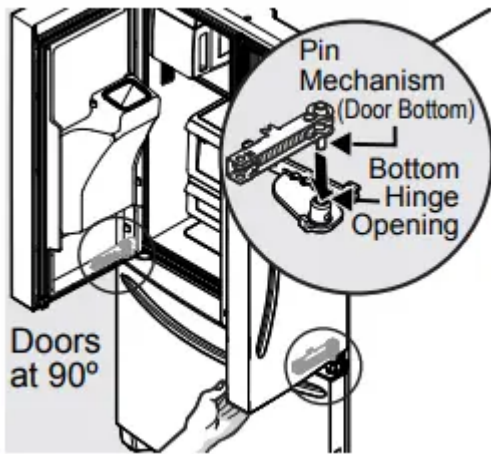


**Lower Hinge Removal**

### **To reinstall the refrigerator doors:**

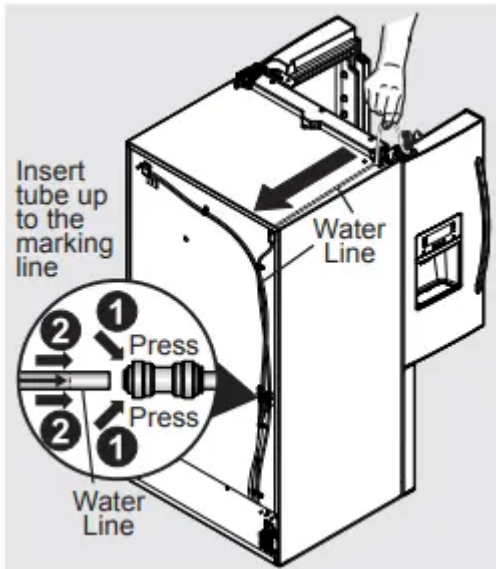
1 Replace the lower hinge screws.

2 Holding the door at a 90 degree angle, drop the pin down into the center hinge opening. Rotate it slightly in either direction until the door falls down into place.



3 Reinstall top hinge.

4 Insert the water line in the top left tunnel pushing from the front to the back of the unit.



NOTE When reinserting the water tube and replacing the top hinge cover, use care to be sure you do not kink the tube.

5 Reconnect the harnesses.

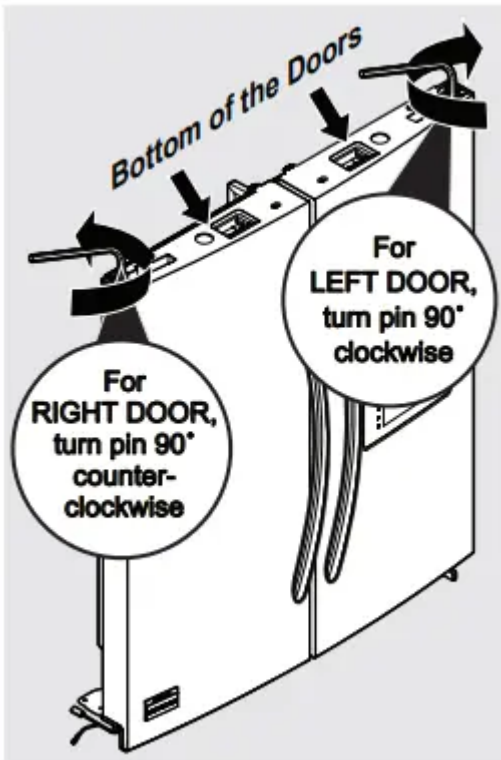
6 Replace the top hinge covers.

7 Reconnect electrical power cord to the wall outlet.

**To reset door pin:**

If doors are removed at less than a 40 degree angle, the pin returns to the home position. It can be reset by turning the door upside and using a 5/32" Allen wrench to rotate the left hand pin 90 degrees clockwise and the right hand pin 90 degrees counterclockwise.

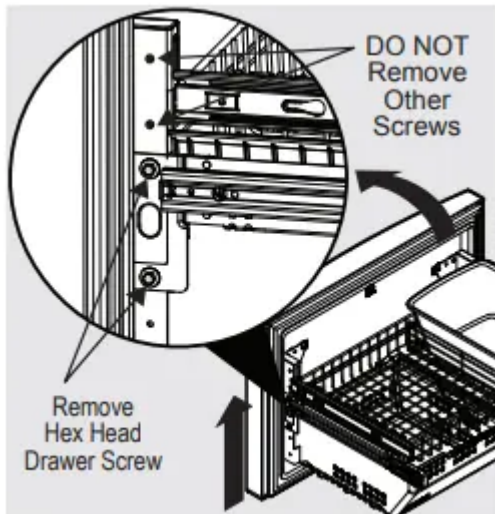




Once the door pins are reset, follow the steps “To reinstall the refrigerator doors”.

### Removing Freezer Drawer

- 1 Remove 4 hex head drawer screws.
- 2 Lift up drawer to remove.

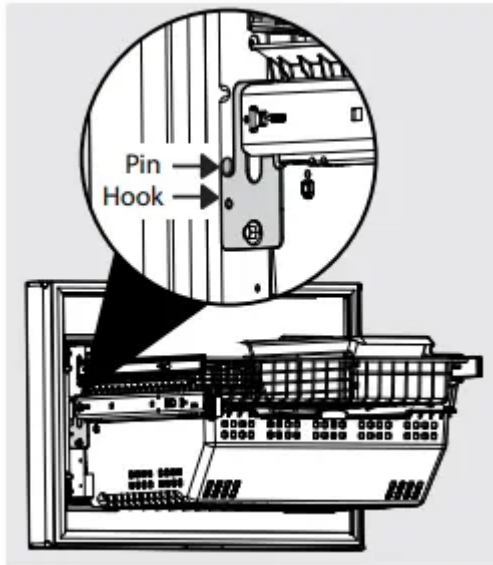


### Replacing Freezer Drawer

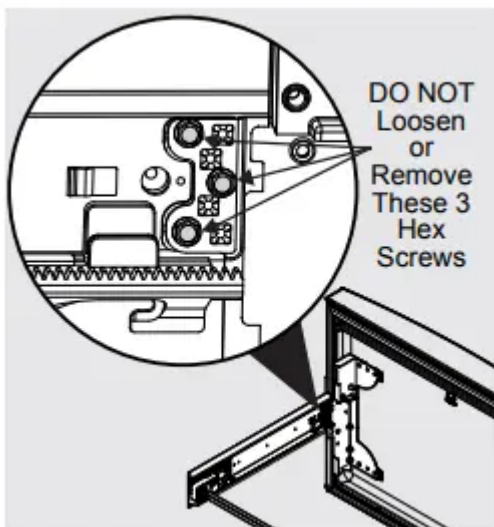
- 1 Extend the Freezer slides from the unit.



2 Carefully align support pin with hooks on end of freezer slides and then lower freezer door onto slides. 3 Replace the 4 hex head screws that secure the slides to the door (2 on each side) and tighten.



NOTE To locate the pin, look inside the drawer and the pin is next to the door liner and the slides. Not all parts are shown in the illustration.



## INSTALLING DOOR HANDLES

### Door Handle Mounting Instructions for Frigidaire & Frigidaire Gallery

- 1 Remove handles from carton and any other protective packaging.
- 2 Position fresh food handle end caps over upper and lower pre-installed shoulder bolts (A) that are fastened into door, ensuring the holes for the set screws are facing towards the opposite door.
- 3 While holding handle firmly against door, fasten upper and lower Allen set screws (B) with supplied Allen wrench.

4 Repeat steps 2 and 3 to install opposite handle. Ensure the holes for the set screws are facing towards the first door.

5 Position freezer handle end caps over left and right preinstalled shoulder bolts (A) that are fastened to the door, ensuring the holes for the set screws are facing down.

6 While holding handle firmly against door, loosely tighten right Allen set screw (B) with supplied Allen wrench until there is no gap between handle and door.

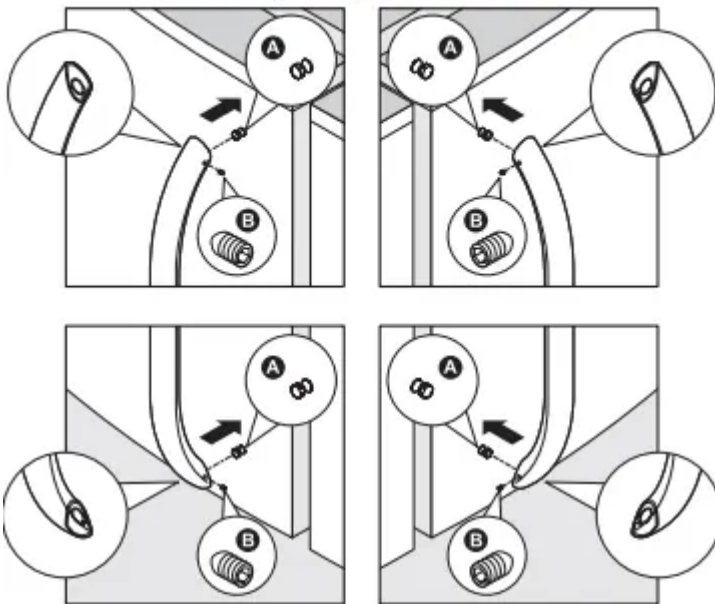
7 Still holding the handle firmly to the door, firmly tighten left Allen set screw (B) with supplied Allen wrench.

8 Return to the right Allen set screw (B) and firmly tighten with supplied Allen wrench.

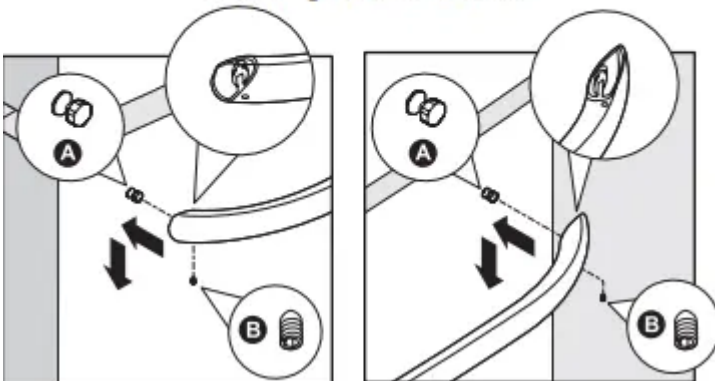
#### NOTE

All set screws should be tightened so the screw is below the surface of the handle. The handles should be drawn tight to freezer and refrigerator doors with no gaps. Opening the opposite door while tightening the Allen screw makes installation easier. The door handle may loosen over time or if it was installed improperly. If this happens, tighten the set screws on the handles.

#### Mounting Refrigerator Handles



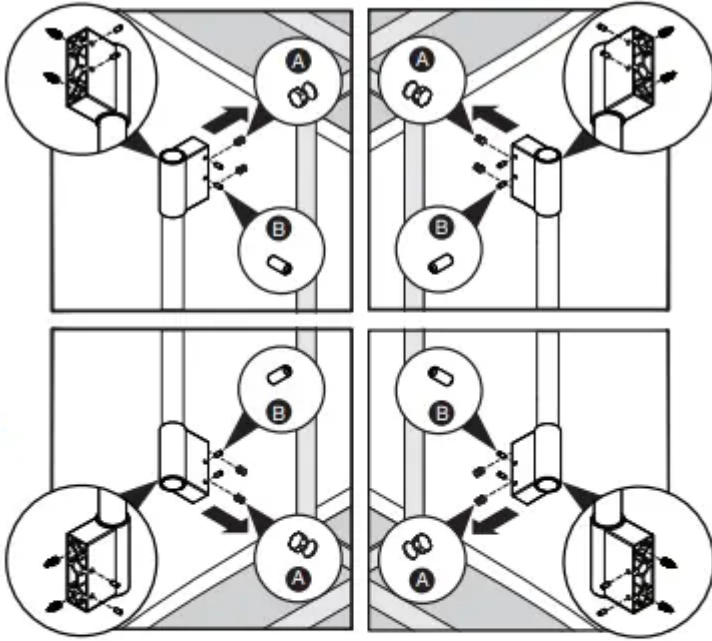
#### Mounting Freezer Handle



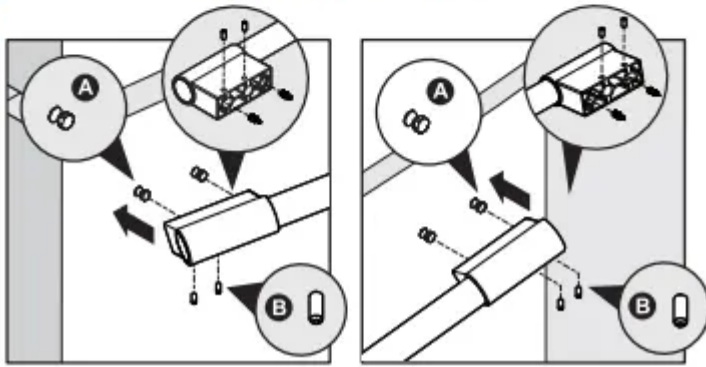
## **Door Handle Mounting Instructions for Frigidaire Professional®**

- 1 Remove handles from carton and any other protective packaging.
- 2 Position fresh food handle end over upper and lower preinstalled shoulder bolts (A) that are fastened into door, ensuring the holes for the set screws are facing towards the opposite door.
- 3 While holding handle firmly against door, fasten further most upper and further most lower Allen set screws (B) with supplied Allen wrench.
- 4 Repeat steps 2 and 3 to install opposite handle. Ensure the holes for the set screws are facing towards the first door.
- 5 Firmly tighten the inside Allen set screws.
- 6 Position freezer handle end over left and right pre-installed handle shoulder bolts (A) that are fastened to the door, ensuring the holes for the set screws are facing down.
- 7 While holding handle firmly against door, loosely tighten far right Allen set screw (B) with supplied Allen wrench until there is no gap between handle and door.
- 8 Still holding the handle firmly to the door, firmly tighten far left Allen set screw (B) with supplied Allen wrench.
- 9 Return to the far right Allen set screw (B) and firmly tighten with supplied Allen wrench.
- 10 Firmly tighten the inside Allen set screws.

### Mounting Refrigerator Handles



### Mounting Freezer Handle



## CONNECTING THE WATER SUPPLY

### CAUTION

#### To Avoid Property Damage:

- Copper or Stainless Steel braided tubing is recommended for the water supply line. Water supply tubing made of ¼ inch plastic is not recommended to be used. Plastic tubing greatly increases the potential for water leaks, and the manufacturer will not be responsible for any damage if plastic tubing is used for the supply line.
- DO NOT install water supply tubing in areas where temperatures fall below freezing.
- Chemicals from a malfunctioning softener can damage the ice maker. If the ice maker is connected to soft water, ensure that the softener is maintained and working properly.

### IMPORTANT

Ensure that your water supply line connections comply with all local plumbing codes.

## Before Installing The Water Supply Line, You Will Need:

- Basic Tools: adjustable wrench, flat-blade screwdriver, and Phillips™ screwdriver
- Access to a household cold water line with water pressure between 30 and 100 psi.
- A water supply line made of ¼ inch (6.4mm) OD, copper or stainless steel tubing. To determine the length of tubing needed, measure the distance from the ice maker inlet valve at the back of the refrigerator to your cold water pipe. Then add approximately 7 feet (2.1 meters), so the refrigerator can be moved out for cleaning (as shown).
- A shutoff valve to connect the water supply line to your household water system. Do not use a self-piercing type shutoff valve.
- Do not re-use compression fitting or use thread seal tape.
- A compression nut and ferrule (sleeve) for connecting a copper water supply line to the ice maker inlet valve.

## NOTE

Check with your local building authority for recommendations on water lines and associated materials prior to installing your new refrigerator. Depending on your local/ state building codes, Frigidaire recommends for homes with existing valves its Smart Choice® water line kit 5305513409 with a 6 ft. (1.8 meters) Stainless Steel Water Line, and for homes without an existing valve Frigidaire recommends its Smart Choice® water line kit 5305510264 with a 20 ft. (6 meters) Copper Water Line with self tapping saddle valve.

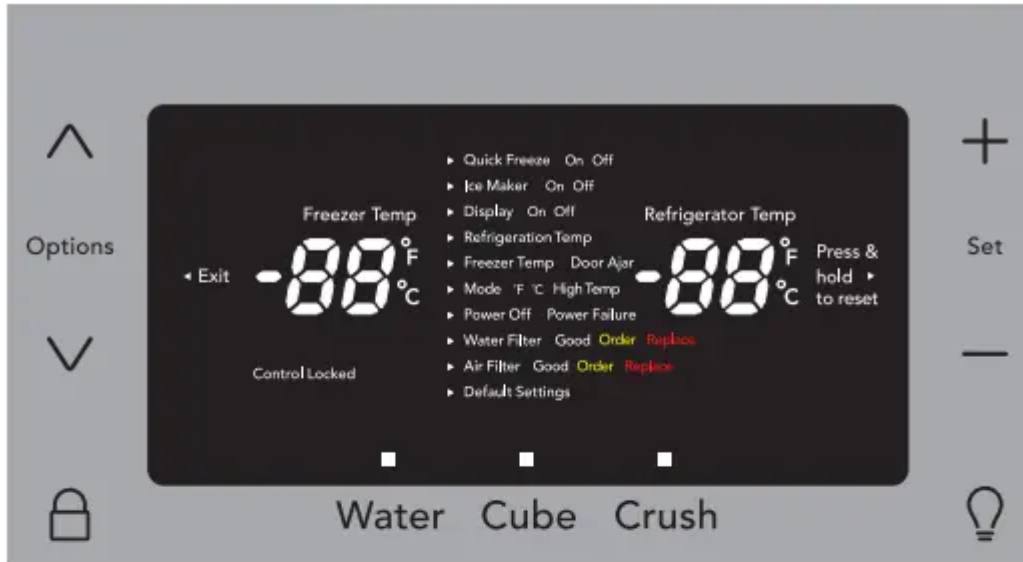
## To Connect Water Supply Line To Ice Maker Inlet Valve

1. Disconnect refrigerator from electric power source.
2. Place end of water supply line into sink or bucket. Turn ON water supply and flush supply line until water is clear. Turn OFF water supply at shutoff valve.
3. Remove plastic cap from water valve inlet and discard cap.
4. **If you use copper tubing** - Slide brass compression nut, then ferrule (sleeve) onto water supply line. Push water supply line into water valve inlet as far as it will go (¼ inch/ 6.4 mm). Slide ferrule sleeve into valve inlet and finger tighten compression nut onto valve. Tighten another half turn with a wrench; DO NOT over tighten. See Figure 1. **If you use braided flexible stainless steel or polyline tubing** - The nut is already assembled on the tubing. Slide nut onto valve inlet and finger tighten nut onto valve. Tighten another half turn with a wrench; DO NOT over tighten. See Figure 2.
5. With steel clamp and screw, secure water supply line (copper tubing only) to rear panel of refrigerator as shown.
6. Coil excess water supply line (copper tubing only), about 2½ turns, behind refrigerator as shown and arrange coils so they do not vibrate or wear against any other surface.
7. Turn ON water supply at shutoff valve and tighten any connections that leak.

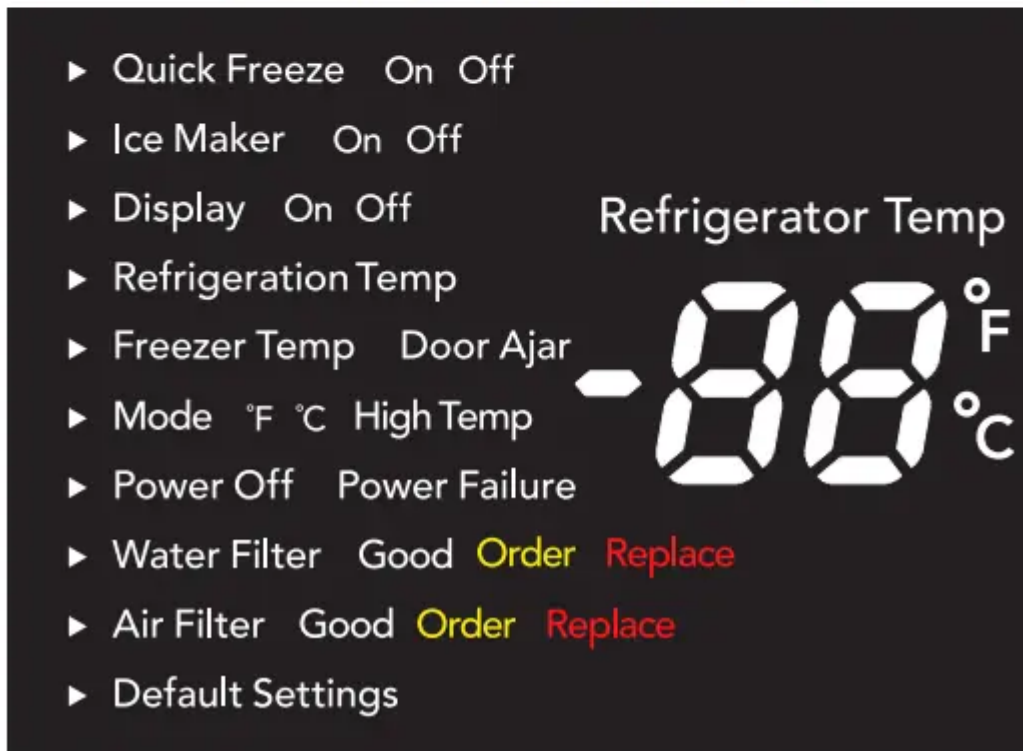
8. Reconnect refrigerator to electrical power source.
9. To turn ice maker on, lower wire signal arm (freezer ice maker) or set the ice maker's On/Off power switch to the "On" position (fresh food ice maker).

## CONTROLS - FRIGIDAIRE & FRIGIDAIRE GALLERY DISPENSER

### User Interface (colors and options may vary by model)



### Enlarged view of above user interface display menu (colors and options may vary by model)



## Options May Vary

### options ( ^ or v )

Used to enter and exit the options menu and make selections.

### exit

Toggles the options and run modes.



### control locked

While in the locked state, you will not be able to change any settings on the display nor dispense ice and water. The “Control Locked” indicator will flash and an audible warning tone is played.

### light

Toggles dispenser light On and Off.

### quick freeze on off

Activates a faster rate for freezing food. Deactivates after 12 hours.

### ice maker on-off

Toggles the ice maker in the refrigerator compartment “ON” or “OFF”. In the “Off” state, the indicator will blink when ice is dispensed.

### display on off

Toggles the display of the temperature settings On and Off

### refrigeration temp

Allows the temperature set points to be adjusted. Control temperatures range from +33°F / +1°C to +47°F / +8°C

### freezer temp

Allows the temperature set-points to be adjusted.

Control temperatures range from -6°F / -21°C to +6°F / -15°F °C

### mode °F °C

Toggles display from Fahrenheit to Celsius.

### power off

Press and hold for three seconds to turn off the cooling system. It also turns off the ice maker and all dispenser functions. The display will read power off”.

### water filter

Displays the current status of the water filter (Good, Order, or Replace). To reset the filter status to “Good”, press and hold the “set” key for three seconds.

#### **air filter**

Displays the current status of the air filter (Good, Order, or Replace). To reset the filter status to “Good”, press and hold the “set” key for three seconds.

#### **default settings**

While in the default option, press and hold the set key for three seconds to reset all refrigerator settings to their factory default settings.

#### **set (+ or -)**

Selects the current menu selection option.

#### **water**

Press the “water” key to select water. A green indicator light will be illuminated above the active feature.

#### **cube**

Press the “cube” key to select cubed ice. A green indicator light will be illuminated above the active feature.

#### **crush**

Press the “crush” key to select crushed ice. A green indicator light will be illuminated above the active feature.

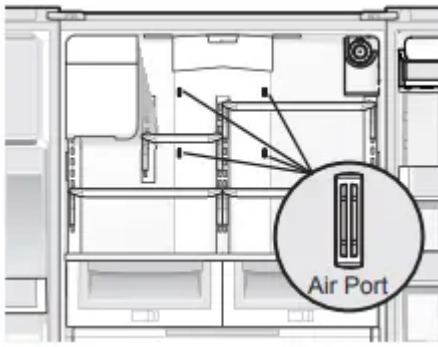
### **Setting cooling temperatures (options may vary)**

#### **NOTE**

The recommended settings for a product installed in a kitchen is 37°F for the fresh food compartment and 0°F for the freezer.

**IMPORTANT** If your product has food freezing in the fresh food compartment, increase the temperature setting 1 or 2 degrees.

**IMPORTANT** If you place food within 1 inch in front of the air ports, there may be the chance of freezing food.



## Alarms

### Power Failure

In the event of a power failure, the power fail alert will be illuminated. Press alarm reset to acknowledge the alarm. Other modes may be turned off until the alarm is acknowledged.

When the power fail alert is acknowledged, the refrigerator will resume normal operation. The high temp alarm may also be illuminated until a safe operating range temperature has been reached.

### Freezer Temp

If the freezer temperature reaches 26°F or greater, the alarm will sound and the temperature will flash. You can disable the alarm by pressing the set key but the "High Temp" indicator will illuminate until the temperature goes below 26°F.

### Fresh Food Temp

If the fresh food temperature reaches 55°F or greater, the alarm will sound and the temperature will flash. You can disable the alarm by pressing the set key but the "High Temp" indicator will illuminate until the temperature goes below 55°F.

### Door Ajar

If the freezer or fresh food doors have been left open for five minutes or more, an alarm will sound and the door ajar indicator will illuminate on the display. Press the set key to reset any system alarms.

### Flapper

When "Cube" or "Crush" is selected, if the flapper (or ice chute door) is being held open by a jammed ice cube, an alarm will sound for two minutes.

The alarm will reset after two minutes or when the ice cube is removed and the set key is pressed to reset.

### Sabbath Mode

The Sabbath Mode is a feature that disables portions of the refrigerator and its controls in accordance with observance of the weekly Sabbath and religious holidays within the Orthodox Jewish community.

Sabbath Mode is turned ON and OFF by pressing and holding both the “v” and “+” for five seconds. The display shows “Sb” while in Sabbath mode.

In the Sabbath Mode, the High Temp alarm is active for health reasons. For example, if the door is left ajar the High Temp alarm is activated. The refrigerator will function normally once the door is closed, without any violation of the Sabbath/Holidays. The High Temp alarm is permitted when cabinet temperature is outside the safe zone for 20 minutes. The alarm silences itself after 10 minutes while the High Temp icon stays lit until the Sabbath mode is exited.

#### NOTE

While in Sabbath Mode, neither the lights, dispenser, nor the control panel will work until Sabbath Mode is deactivated.

Refrigerator stays in Sabbath Mode after power failure recovery. It must be deactivated with the buttons on the control panel.

#### NOTE

Although you have entered the Sabbath

Mode, the ice maker will complete the cycle it had already initiated. The ice cube compartment will remain cold and new ice cubes can be made with standard trays.

## CONTROLS - NON-DISPENSER MODELS



### User Interface In-Door Controls (options may vary)

An indicator light will be illuminated above most active features. Touch the icon to activate the options below.

## **Power On Off**

Press and hold for three seconds to turn off the cooling system. It also turns off the ice maker and all dispenser functions. The display will read "OFF".

## **Default Settings**

Resets all refrigerator settings such as temp, temp display and tones to their factory default settings.

## **Quick Freeze**

Activates a faster rate for freezing food.

## **Quick Ice**

Temporarily increases cooling for freezer to increase the production of ice

## **Air Filter**

Filter condition status is always displayed when door is open. Press and hold for three seconds to reset after filter change.

## **Water Filter**

Press and hold for three seconds to reset after filter change.

## **Alert Reset**

Tones emitted by each key press can be turned off based on user preference. The sounds are muted when the red indicator is lit. Warning signals will stay active.

## **F/C**

Touch to toggle display from Fahrenheit to Celsius.

## **Setting cooling temperatures**

Press the + or – indicator to adjust the temperature to the desired setting.

The temperature setting will begin to blink with the first touch. The display will time out after 10 seconds and return to the basic display.

## **Alarms**

### **Power Failure**

In the event of a power failure, the power fail alert will be displayed and the temperature display will blink until the alert reset icon is pressed, acknowledging the alarm. Other modes may be turned off until the alarm is acknowledged. The power fail alert is turned off and the refrigerator will resume normal operation. The high temp alarm may also be illuminated until a safe operating range temperature has been reached

### **Door Ajar**

If the freezer or fresh food doors have been left open for five minutes or more, an alarm will sound and the door ajar indicator will illuminate on the display. Press "MUTE ALARM" to reset any system alarms.

### **High Temp**

In the event of a high temperature condition, the temperature display will blink and display "HI". After 20 minutes, the alarm will sound and the high temp indicator will be red on the bottom of the control panel. Upon acknowledging the alarm, the highest temperature reached will be displayed and the refrigerator will resume normal operation. In case the high temp alarm is not acknowledged at the first alarm sound time out, when the door is first opened, the alarm sound will be repeated.

### **Sabbath Mode**

The Sabbath Mode is a feature that disables portions of the refrigerator and its controls in accordance with observance of the weekly Sabbath and religious holidays within the Orthodox Jewish community.

Sabbath Mode is turned ON and OFF by simultaneously pressing and holding both the freezer "-" and the refrigerator "+" for five seconds. The display shows "Sb" while in Sabbath mode.

In the Sabbath Mode, the "HIGH TEMP" alarm is active for health reasons. For example, if the door is left ajar the "HIGH TEMP" alarm is activated. The refrigerator will function normally once the door is closed, without any violation of the Sabbath/Holidays. The

"HIGH TEMP" alarm is permitted when cabinet temperature is outside the safe zone for 20 minutes. The alarm silences itself after 10 minutes while the "HIGH TEMP" icon stays lit until the Sabbath mode is exited.

#### **NOTE**

While in Sabbath Mode, neither the lights, dispenser, nor the control panel will work until Sabbath Mode is deactivated.

Refrigerator stays in Sabbath Mode after power failure recovery. It must be deactivated with the buttons on the control panel.

#### **NOTE**

During Sabbath Mode, the freezer ice maker will continue to work and must be manually turned off to be compliant with the Sabbath observances.

## **CONTROLS - FRIGIDAIRE PROFESSIONAL**

### **User Interface In-Door Controls options may vary)**

#### **POWER ON-OFF**

Press and hold for three seconds to turn off the cooling system. It also turns off the ice maker and all dispenser functions. The display will read "OFF".

### **DEFAULT SETTINGS**

Press and hold for three seconds to reset all refrigerator settings to their factory default settings.

### **ICE MAKER ON-OFF**

Press and hold for 3 seconds to toggle the ice maker in the freezer compartment "ON" or "OFF".

### **POWERPLUS FREEZE**

Activates a faster rate for freezing food and increases ice production in the freezer. Deactivates after 12 hours.

### **AIR FILTER**

Displays the current status of the air filter (GOOD, ORDER, or REPLACE). To reset the filter status to "GOOD", press and hold for three seconds.

### **WATER FILTER**

Displays the current status of the water filter (GOOD, ORDER, or REPLACE). To reset the filter status to "GOOD", press and hold for three seconds.

### **MUTE ALARM**

Tones emitted by each key press can be turned off based on user preference. The sounds are muted when the red indicator is lit. Warning signals will stay active.

### **REFRIGERATOR TEMP**

Allows the temperature set points to be adjusted. Press the "-" or "+" indicator to adjust the temperature to the desired setting. Control temperatures range from +33°F / +1°C to +43°F / +6°C.

### **FREEZER TEMP**

Allows the temperature set points to be adjusted. Press the "-" or "+" indicator to adjust the temperature to the desired setting. Control temperatures range from -6° F / -21°C to +4°F / -16°C.

### **C/F**

Toggles display between Celsius and Fahrenheit.

## **Alarms**

### **Power Failure**

In the event of a power failure, the power fail alert will be illuminated. Press "mute alarm" to acknowledge the alarm. Other modes may be turned off until the alarm is acknowledged. While a power failure alert is displayed on the control panel, the unit will continue normal operation. The power fail alert on the control panel will be removed once the user acknowledges the power fail

condition by pressing any key on the control panel. The high temp alarm may also be illuminated until a safe operating range temperature has been reached

### **Freezer Temp**

If the freezer temperature reaches 26°F or greater, the alarm will sound and the temperature will flash and the dispenser control will display “HIGH TEMP DETECTED”. You can disable the alarm by pressing “MUTE ALARM” but the “HIGH TEMP DETECTED” indicator will illuminate until the temperature goes below 26°F.

### **Fresh Food Temp**

If the fresh food temperature reaches 55°F or greater, the alarm will sound and the temperature will flash and the dispenser control will display “HIGH TEMP DETECTED”. You can disable the alarm by pressing “MUTE ALARM” but the “HIGH TEMP DETECTED” indicator will illuminate until the temperature goes below 55°F.

### **Door Ajar**

If the freezer or fresh food doors have been left open for five minutes or more, an alarm will sound and the door ajar indicator will illuminate on the display. Press “MUTE ALARM” to reset any system alarms.

### **Flapper**

When “CUBES” or “CRUSHED” is selected, if the flapper (or ice chute door) is being held open by a jammed ice cube, an alarm will sound for two minutes and the current selection will blink on the dispenser control. The alarm will reset after two minutes or when the ice cube is removed.

### **Sabbath Mode**

The Sabbath Mode is a feature that disables portions of the refrigerator and its controls in accordance with observance of the weekly Sabbath and religious holidays within the Orthodox Jewish community.

Sabbath Mode is turned ON and OFF by simultaneously pressing and holding both the freezer “-” and the refrigerator “+” for five seconds. The display shows “Sb” while in Sabbath mode.

In the Sabbath Mode, the “HIGH TEMP” alarm is active for health reasons. For example, if the door is left ajar the “HIGH TEMP” alarm is activated. The refrigerator will function normally once the door is closed, without any violation of the Sabbath/Holidays.

The High Temp alarm is permitted when cabinet temperature is outside the safe zone for 20 minutes. The alarm silences itself after 10 minutes while the High Temp icon stays lit until the Sabbath mode is exited.

### **NOTE**

While in Sabbath Mode, neither the lights, dispenser, nor the control panel will work until Sabbath Mode is deactivated.

Refrigerator stays in Sabbath Mode after power failure recovery. It must be deactivated with the buttons on the control panel.

#### NOTE

Although you have entered the Sabbath Mode, the ice maker will complete the cycle it had already initiated. The ice cube compartment will remain cold and new ice cubes can be made with standard trays.

## STORAGE FEATURES

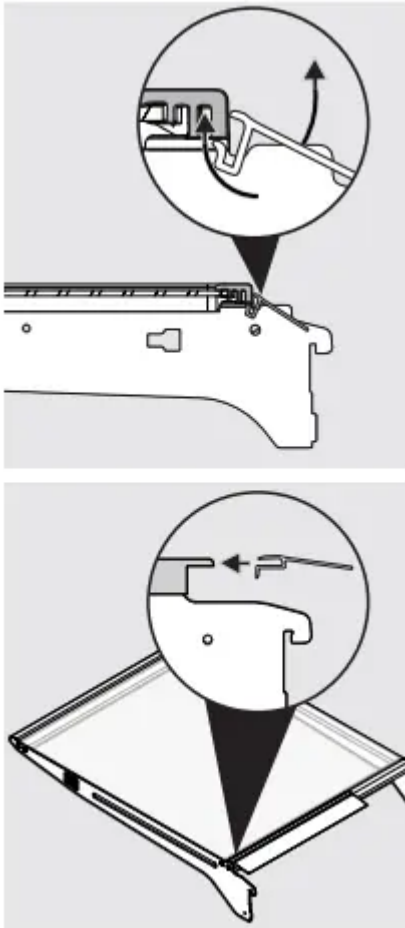
### Reposition the Air Seal

#### For crisper shelves:

- 1 Remove air seal by pushing down on the flap with a downward rotation.
- 2 Position the air seal towards the outside end of the shelf to avoid the air tower when shelf is pushed back into place.
- 3 Install seal by sliding lower tab of seal up into bottom rear slot of shelf with seal at a downward angle then pulling up on seal flap until seal sits snug on back of shelf and flap sits at about a 10 degree angle from shelf surface.

#### For glass shelves:

- 1 Remove air seal by pushing seal straight back.
- 2 Position the air seal towards the outside edge of the shelf to avoid the air tower when shelf is pushed back into place.
- 3 Install seal by sliding the open channel end of the seal onto back edge of shelf until seal sits snug on back of shelf and flap sits at about a 10 degree angle from shelf surface.

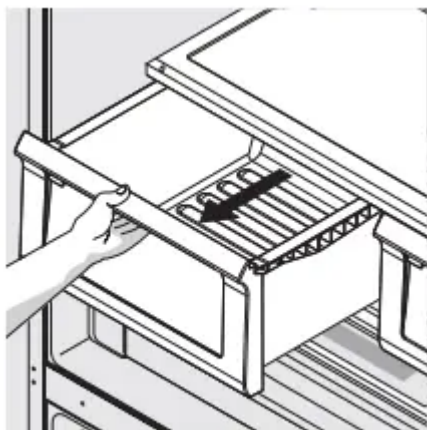


## Drawers

Your refrigerator includes a variety of storage drawers.

## Crispers

Crisper drawers are designed for storing fruits, vegetables, and other fresh produce.



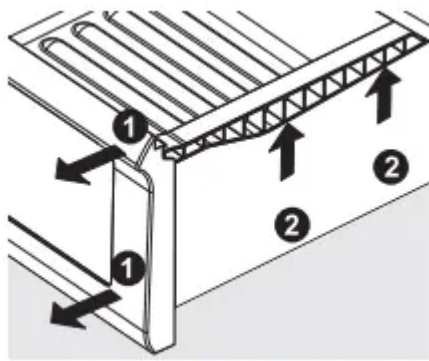
Opening Crisper Drawer

## Crisper humidity control

Crisper drawers include a sliding control for adjusting the humidity inside the crisper. Leafy vegetables keep best when stored with the Humidity Control set on Higher Humidity. Fresh fruits keep best when stored with the Humidity Control set on Lower Humidity

**To remove the Crisper Drawer for cleaning:**

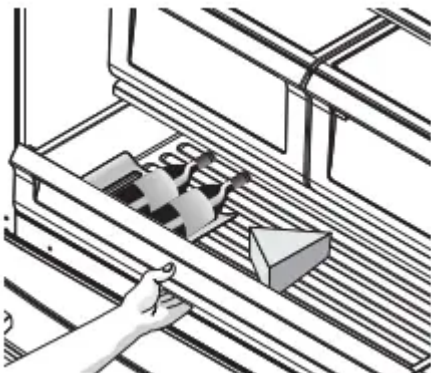
- 1 Pull the drawer out until it stops.
- 2 Lift the front slightly and remove the drawer.



**Removing Crisper Drawer**

**Deli drawer**

Ideal for storage of deli meats, cheese, and beverages.



**Doors**

**Storage bins (varies by model)**

The doors to your fresh food compartment use a system of modular storage bins. All of these bins are removable for easy cleaning. Some of them have fixed positions, while others can be adjusted to your needs.

Door bins are ideal for storing jars, bottles, cans, and large drink containers. They also enable quick selection of frequently used items.

**To change the position of an adjustable door bin:**

- 1 Remove all food from door bin.

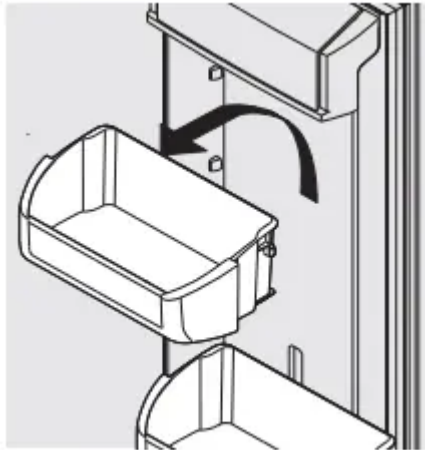


2 Grip the bin firmly with both hands and lift it upward.

3 Remove the bin.

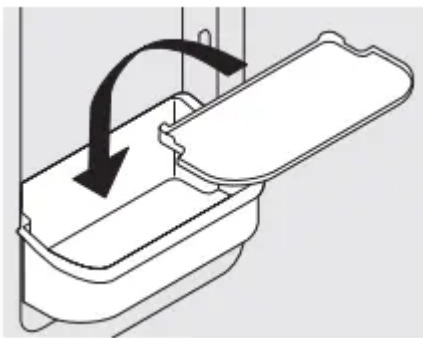
4 Place the bin just above desired position.

5 Lower the bin onto supports until locked in place



**Adjustable Door Bin**

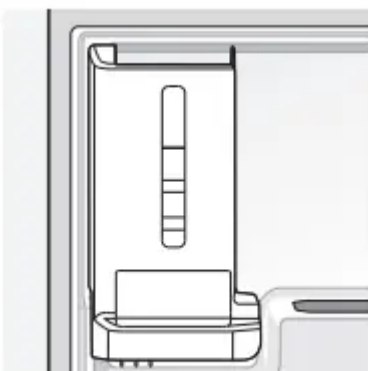
6 Place bin liner into bin.



## **Accessories (varies by model)**

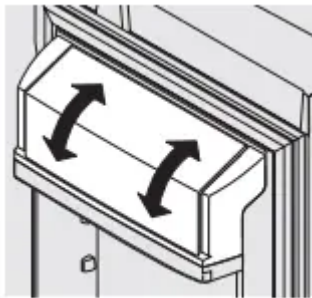
### **Removable Can Dispenser**

The can dispenser holds six (12 ounce) cans. Insert cans into top of bin and dispense from the bottom



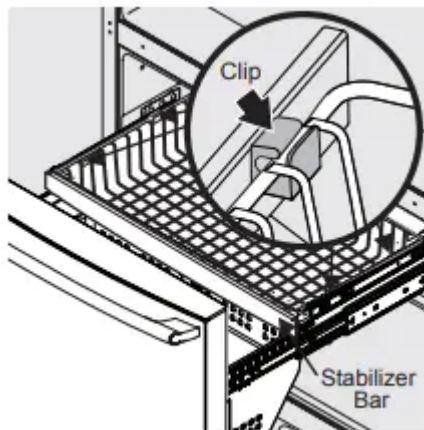
**Can Dispenser**

Dairy compartment Use the dairy compartment, at the top of the fresh food compartment door, for short term storage of cheese, spreads, or butter. The dairy compartment is designed to be warmer than the open area and includes a lift-up cover and a dairy divider (select models)



**Dairy Compartment**

### **Freezer Features (varies by model)**



**Freezer Baskets**

#### **To Remove Upper Freezer Basket**

- 1 Find the side where the basket frame is aligned to the clip opening. The basket frame should be aligned to both front and rear clips on the same side (either left or right side).
- 2 If the basket frame is not aligned to the left or right side, push the basket sideways (to either side) until it is aligned.
- 3 By grabbing the basket wire frame close to the frontal clip, pull up to take the basket frame out.
- 4 Grab the basket frame close to the rear clip and pull up until it comes out of the clip.
- 5 Once one side of the basket is off the clips or retainers, slide the basket sideways until the other side of the frame is aligned with the clip openings on the opposite side of the freezer.
- 6 In the same way, pull up the basket frame from the frontal and rear clips until it is out of the clips.
- 7 Remove the basket.

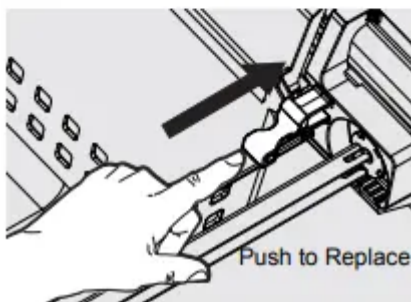
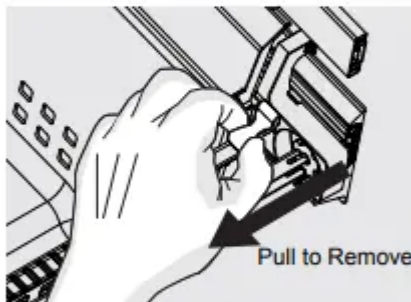
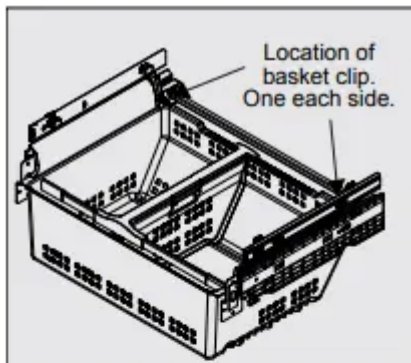
Reverse the steps to reinstall the basket.

## Removing Freezer Basket Instructions

- 1 Locate the basket clips in the rear corners of the basket and pull them out to remove.
- 2 Open fresh food doors completely.
- 3 Lift the basket up and remove.

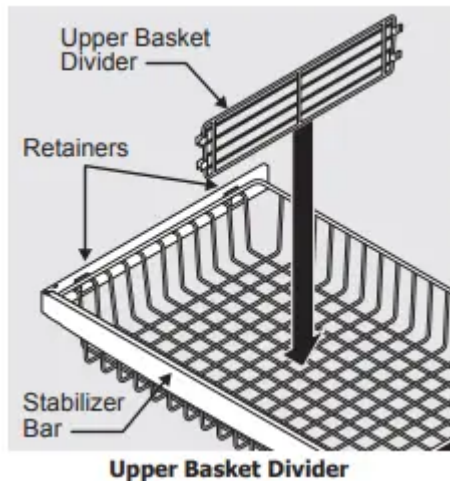
## Replacing Freezer Basket Instructions

- 1 Place freezer basket back inside the freezer drawer.
- 2 Replace clips by sliding them back into the slots.

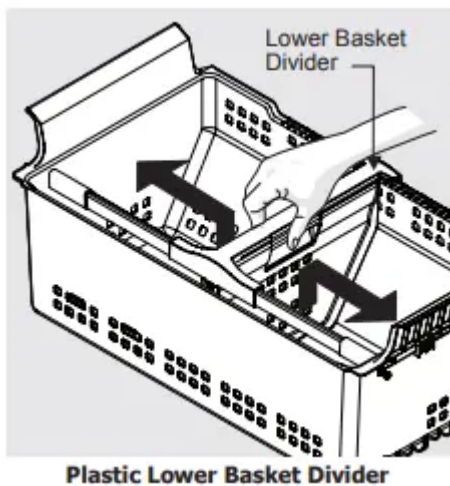


## Dividers Removal

Lift up on the front of the upper divider and pull out.



Squeeze handle and lift up in the center of the divider to move it side-to-side. (The divider cannot be removed.)



## Tilt Wire Shelf

The freezer tilt wire shelf (located on the inside of the freezer drawer) is not designed to be removed.

## AUTOMATIC ICE & WATER DISPENSER

### Priming the water supply system

1. Begin filling the system by pressing and holding a drinking glass against the water dispenser paddle.
2. Keep the glass in this position until water comes out of the dispenser. It may take about 1½ minutes.
3. Continue dispensing water for about four minutes to flush the system and plumbing connections of any impurities (stopping to empty the glass as necessary).

## Ice maker operation & care

After the refrigerator is installed properly and has cooled for several hours, the ice maker can produce ice within 24 hours. The ice maker will fill the ice bin from the rear. You must dispense some ice to force the ice forward in the bin. This will allow the bin to fill completely.

### Ice Maker and Storage Bin Capacity

This ice maker should produce 2.5 to 3 pounds of ice per 24 hours. In a Standard Depth model, the ice bin will hold about 6.5 pounds of ice. In a Counter Depth model, the ice bin will hold about 4 pounds of ice.

### Turning the ice maker on and off

Ice production is controlled by the ice maker's On/Off feature on the control panel. Pressing and holding the On/Off button toggles the ice maker On/Off.

**IMPORTANT** Turning off the ice maker simply disables ice making. You will still be able to dispense existing ice, and you will still be able to dispense water.

### Using the ice maker after installation

Before making ice for the first time, be sure to prime the water supply system. Air in new plumbing lines can result in two or three empty ice maker cycles. Furthermore, if the system is not flushed, the first ice cubes may be discolored or have an odd flavor.

#### IMPORTANT

Your ice maker is turned on at the factory so it can work as soon as you install your refrigerator. If you cannot connect a water supply, set the ice maker's On/Off feature to Off; otherwise, the ice maker's fill valve may make a loud chattering noise when it attempts to operate without water.

#### IMPORTANT

On occasion, unusually small ice cubes may be noticed in the bucket or in dispensed ice. This could occur in normal operation of the ice maker. If you start seeing these more frequently, it may be an indication of low water pressure or the water filter needs to be replaced. As the water filter nears the end of its useful life and becomes clogged with particles, less water is delivered to the ice maker during each cycle. Remember, if it's been six months or longer since you last changed your water filter, replace the water filter with a new one. Poor quality household water may require the filter to be changed more frequently.

### Ice maker/dispenser tips

- If your refrigerator is not connected to a water supply or the water supply is turned off, turn off the ice maker as described in the previous section.

- The following sounds are normal when the ice maker is operating:
  - Motor running
  - Ice dropping into ice bin
  - Water valve opening or closing
  - Running water
- When dispensing ice, you will hear a snapping or clicking sound when the ice chute opens and closes.
- If you need a large quantity of ice at one time, it is best to get cubes directly from the ice bin.
- Ice cubes stored too long may develop an odd flavor. Empty the ice bin as explained below.
- When dispensing cubed ice, it is normal to have a small quantity of little pieces along with the whole cubes.
- To avoid splashing, dispense ice into your container before adding liquids.
- It is normal for ice to fill to the top of the ice bin.

## **Cleaning the ice maker**

Clean the ice maker and ice bin at regular intervals, especially prior to vacation or moving.

1. Turn off the ice maker.
2. Remove the ice bin by lifting up slightly on the front of the bin and pulling it straight out of the ice maker housing.
3. Empty and carefully clean the ice bin with mild detergent. Do not use harsh or abrasive cleaners. Rinse with clear water.
4. Allow the ice bin to dry completely before replacing in the freezer.
5. Remove ice chips and clean the ice bin shelf and the freezer door chute.
6. Replace the ice bin. Turn the ice maker on to resume ice production.

### **Remove and empty the ice bin if:**

- An extended power failure (one hour or longer) causes ice cubes in the ice bin to melt and refreeze together after power is restored, jamming the dispenser mechanism.
- You do not use the ice dispenser frequently. Ice cubes will freeze together in the bin, jamming the dispenser mechanism.

Remove the ice bin and shake to loosen the cubes or clean as explained above.

CAUTION NEVER use an ice pick or similar sharp instrument to break up the ice. This could damage the ice bin and dispenser mechanism. To loosen stuck ice, use warm water. Before replacing the ice bin, make sure it is completely dry.

IMPORTANT When removing or replacing the ice bin, avoid rotating the auger in the ice bin. If the auger is accidentally rotated, you must realign the auger by turning it in 45 degree turns (see below) until the ice bin fits into place with the drive mechanism. If the auger is not properly aligned when replacing the ice bin, the refrigerator will not dispense ice. The fresh food door also may not close properly causing warm air to leak into the fresh food compartment.

### **Operation & Care of the Freezer Ice Maker (select models)**

After the refrigerator is installed properly, the ice maker can produce ice within 24 hours. When using the ice maker for the first time, and in order for it to work properly, it is necessary to clear air from the water tubing and the filter. Furthermore, if the system is not flushed, the first ice cubes may be discolored or have an odd flavor. Once the ice maker begins making ice, allow the bin to fill completely, then discard the first FULL bin of ice on a Standard Depth model, and the first TWO FULL bins of ice on a Counter Depth model.

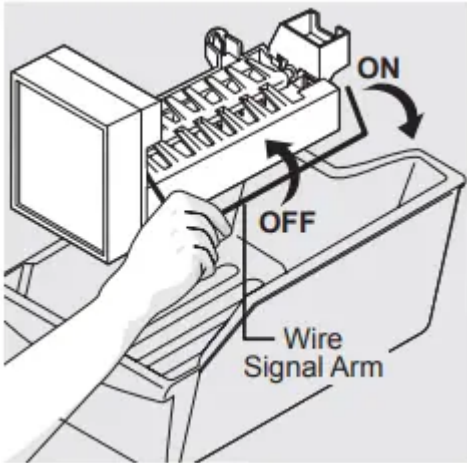
### **Ice Maker and Storage Bin Capacity**

This ice maker should produce between 2 and 2.5 pounds of ice per 24 hours depending on usage conditions. In a Standard Depth model, the ice bin will hold about 12 pounds of ice. In a Counter Depth model, the ice bin will hold about 7 pounds of ice.

IMPORTANT Your ice maker is turned on at the factory so it can work as soon as you install your refrigerator. If you cannot connect a water supply, lift the ice maker's wire signal arm to turn it off. Otherwise, the ice maker's fill valve may make a loud chattering noise when it attempts to operate without water.

### **Turning the ice maker on and off**

The ice maker is turned off and on by lifting/ lowering the ice maker's wire signal arm. To gain access to the ice maker, pull the freezer drawer out. Lift the wire signal arm to turn the ice maker OFF and lower the wire signal arm to turn it ON.



## Quick Freeze Function

Your refrigerator is equipped with a Quick Freeze Function for freezing food at a faster rate, but it can also increase ice production. This function terminates automatically after 12 hours. This function affects only the ice maker in the freezer.

## Cleaning the ice maker

Clean the ice maker and ice bin at regular intervals, especially prior to vacation or moving.

- 1 Turn off the ice maker.
- 2 Remove the ice bin.
- 3 Empty and carefully clean the ice bin with mild detergent. Do not use harsh or abrasive cleaners. Rinse with clean water.
- 4 Allow the ice bin to dry completely before replacing in the freezer.
- 5 Replace the ice bin. Turn the ice maker on.

Remove and empty the ice bin if an extended power failure (one hour or longer) causes ice cubes in the ice bin to melt and refreeze together after power is restored.

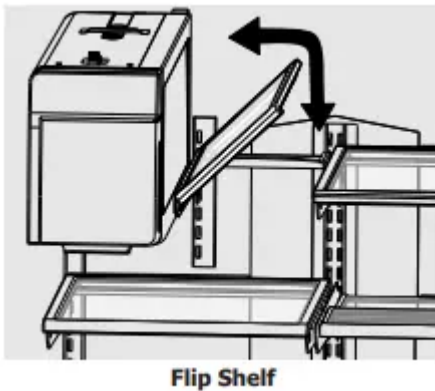
Remove the ice bin and shake to loosen the cubes or clean as explained above.

You can easily adjust shelf positions in the fresh food compartments to suit your needs. The shelves have mounting brackets that attach to slotted supports at the rear of each compartment.

## Change the Position of a Shelf

- 1 Remove all food from shelf.
- 2 Lift the front edge up and pull the shelf out.
- 3 Replace by inserting the mounting bracket hooks into the desired support slots.
- 4 Lower the shelf and lock into position.

**IMPORTANT** Be aware of the air seal located at the rear of the shelf. Shelves located on the left side should have the air seal mounted on the far left side. Shelves located on the right side should have the air seal mounted on the far right side. This is to ensure there is no interference with the large air tower on the back wall of the cabinet. This also applies to the crisper shelves.



## CHANGING THE FILTER

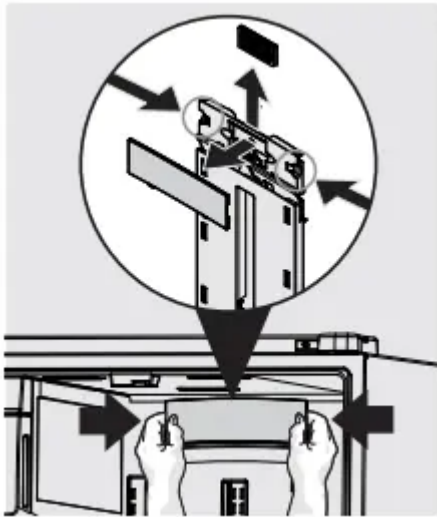
### **Air filter (Frigidaire Gallery/Professional)**

The air filter is located at the top of the fresh food compartment next to the water filter.

### **Replacing your PureAir Ultra IITM air filter**

To ensure optimal filtering of refrigerator odors, you should change the air filter every six months (the filter status light on the Touch Panel prompts you to replace the filter after six months).

- 1 Insert fingers in circled area.
- 2 Push clips in to release front cover.
- 3 Remove front cover by pulling towards you and lifting up.
- 4 Replace air filter by sliding into slots.
- 5 Installation of front cover is reverse of removal.
- 6 To reset Air Filter status, refer to instructions under "Controls Section".



## Ordering replacement filters

Order new filters by calling 877-808-4195, online at [www.frigidaire.com/store](http://www.frigidaire.com/store), or through the dealer where you bought your refrigerator. You may want to consider ordering extra filters when you first install your refrigerator. Air Filter Replacement cartridge, part #PAULTRA2

## Locating the Filters

Your refrigerator is equipped with water filtering system. The water filter system filters all dispensed drinking water, as well as the water used to produce ice. The filter is located in the top right rear corner of the fresh food compartment.

## Water Filter

The water filter is located at the top right side of the fresh food compartment.

## Replacing the Water Filter

In general, you should change the water filter every six months to ensure the highest possible water quality. Water Filter Status on the user interface prompts you to replace the filter after a standard amount of water (125 gallons/473 liters for PureSource Ultra II™) has flowed through the system.

If your refrigerator has not been used for a period of time (during moving for example), change the filter before reinstalling the refrigerator.

## Ordering Replacement Filters

To order your replacement filters, please visit our online store at [www.frigidaire.com/store](http://www.frigidaire.com/store), by calling toll-free at 1-800-599-7569, or by visiting the dealer where you purchased your refrigerator. Frigidaire recommends that you order extra filters when you first install your refrigerator, and that you replace your filters at least once every six months.

Here is the product number to request when ordering:

PureSource Ultra IITM Water Filter Part #EPTWFU01

## **More about your Advanced Water Filter**

The PureSource Ultra IITM ice and water filter system is tested and certified to NSF/ANSI Standards 42, 53 and 401 for the reduction of claims specified on the performance data sheet.

Do not use with water that is microbiologically unsafe or of unknown quality without adequate disinfection before or after the system. Systems certified for cyst reduction may be used on disinfected waters that may contain filterable cysts.

### **Test & certification results:**

- Rated Capacity - 125 gallons/473 liters for PureSource Ultra IITM ice and water filter
- Rated service flow - .65 gallons per minute
- Operating Temp: Min. 33°F, Max. 100°F
- Maximum Rated Pressure - 100 pounds per square inch
- Recommended Minimum Operating Pressure: 30 pounds per square inch

### **To replace your PureSource Ultra IITM water filter:**

It is not necessary to turn the water supply off to change the filter. Be ready to wipe up any small amounts of water released during the filter replacement.

1. Turn Off the ice maker power switch.
2. Remove the old filter by rotating it counter clockwise (to the left) 90 degrees to release it.
3. Slide the old filter cartridge straight out of the housing and discard it.
4. Unpackage the new filter cartridge. Slide it into the filter housing as far as it will go with the grip end horizontal.
5. Push lightly inward on the filter while rotating it clockwise (to the right). The filter will then pull itself inward as it is rotated. Rotate the filter 90 degrees until it stops and the grip end is vertical. You may be able to feel a very light click as the filter locks into place.
6. Press a drinking glass against the water dispenser while checking for any leaks at the filter housing. Any spurts and sputters that occur as the system purges air out of the dispenser system are normal.
7. Continue dispensing water for 3-4 minutes or until 1.5 gallons of water has flowed through the system. You will likely need to empty and refill your glass several times.
8. Turn On the ice maker.
9. Press and hold the Water Filter reset button on the control panel for three seconds. When the display changes from Red to Green, the status has been reset.

# NORMAL OPERATING SOUNDS AND SIGHTS

## Understanding the Sounds you may Hear

Your new, high-efficiency refrigerator may introduce unfamiliar sounds. These sounds normally indicate your refrigerator is operating correctly. Some surfaces on floors, walls, and kitchen cabinets may make these sounds more noticeable.

Following is a list of major components in your refrigerator and the sounds they can cause:

**A Evaporator** Refrigerant through the evaporator may create a boiling or gurgling sound.

**B Evaporator fan** You may hear air being forced through the refrigerator by the evaporator fan.

**C Defrost heater** During defrost cycles, water dripping onto the defrost heater may cause a hissing or sizzling sound. After defrosting, a popping sound may occur.

**D Automatic ice maker** When ice has been produced, you will hear ice cubes falling into the ice bin.

**E Electronic control & automatic defrost control** These parts can produce a snapping or clicking sound when turning the cooling system on and off.

**F Condenser fan** You may hear air being forced through the condenser.

**G Compressor** Modern, high-efficiency compressors run much faster than in the past. The compressor may have a high pitched hum or pulsating sound.

**H Water valve** Makes a buzzing sound each time it opens to fill the ice maker.

**I Drain pan (not removable)** You may hear water dripping into the drain pan during the defrost cycle.

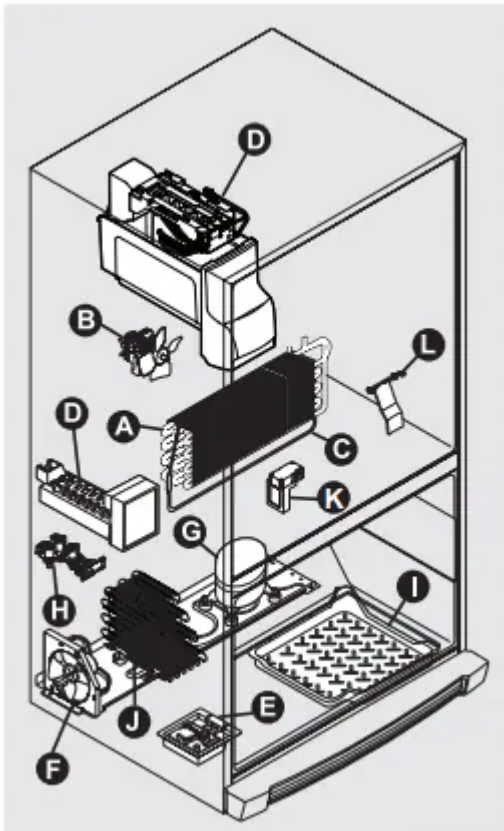
**J Condenser** May create minimal sounds from forced air.

**K Motorized damper** May produce a light humming during operation.

**L Ice dispensing paddle** When dispensing ice, you will hear a snapping, clicking, or popping sound.

### NOTE

During automatic defrost cycle, a red glow in the back wall vents of your freezer compartment is normal.



Features vary by model

## CARE & CLEANING

### Protecting your investment

Keeping your refrigerator clean maintains appearance and prevents odor build-up. Wipe up any spills immediately and clean the freezer and fresh food compartments at least twice a year.

- Never use metallic scouring pads, brushes, abrasive cleaners, or strong alkaline solutions on any surface.
- Never use CHLORIDE or cleaners with bleach to clean stainless steel.
- Do not wash any removable parts in a dishwasher.
- Always unplug the electrical power cord from the wall outlet before cleaning.
- Remove adhesive labels by hand. Do not use razor blades or other sharp instruments which can scratch the appliance surface.
- Do not remove the serial plate. Removal of your serial plate voids your warranty.
- Before moving your refrigerator, raise the anti-tip brackets so the rollers will work correctly. This will prevent the floor from being damaged.

Refer to the guide on the next page for details on caring and cleaning specific areas of your refrigerator.

## CAUTION

- Pull the refrigerator straight out to move it. Shifting it from side to side may damage flooring. Be careful not to move the refrigerator beyond the plumbing connections.
- Damp objects stick to cold metal surfaces. Do not touch refrigerated surfaces with wet or damp hands.

**IMPORTANT** If you store or move your refrigerator in freezing temperatures, be sure to completely drain the water supply system. Failure to do so could result in water leaks when the refrigerator is put back into service. Contact a service representative to perform this operation.

## Vacation and moving tips

### Short Vacations

- Leave refrigerator operating during vacations of three weeks or less.
- Use all perishable items from refrigerator compartment.
- Turn automatic ice maker off and empty ice bucket, even if you will only be gone a few days.

### Long Vacations

- Remove all food and ice if you will be gone one month or more.
- Turn the cooling system off (see “Controls” section for location of On/Off button) and disconnect power cord.
- Turn water supply valve to closed position.
- Clean interior thoroughly.
- Leave both doors open to prevent odors and mold build-up. Block doors open if necessary.

### Moving

- Remove all food and ice.
- If using a handcart, load from the side.
- Adjust rollers all the way up to protect them during sliding or moving.
- Pad cabinet to avoid scratching surface.

## Care and Cleaning Tips

### Interior & Door Liners

- Soap and water
- Baking soda and water
  - Use two tablespoons of baking soda in one quart of warm water.

- Be sure to wring excess water out of sponge or cloth before cleaning around controls, light bulb or any electrical part.

### **Door Gaskets**

- Soap and water
  - Wipe gaskets with a clean soft cloth.

### **Drawers & Bins**

- Soap and water
  - Use a soft cloth to clean drawer runners and tracks.
  - Do not wash any removable items (bins, drawers, etc.) in dishwasher.

### **Glass Shelves**

- Soap and water
- Glass cleaner
- Mild liquid sprays
  - Allow glass to warm to room temperature before immersing in warm water.

### **Toe Grille**

- Soap and water
- Mild liquid sprays
- Vacuum
  - Remove toe grille (see Installation Instructions).
  - Vacuum both sides and wipe with sudsy cloth or sponge. Rinse and dry.

### **Exterior & Handles**

- Soap and water
- Non abrasive glass cleaner
  - Do not use commercial household cleaners containing ammonia, bleach or alcohol to clean handles.
  - Use a soft cloth to clean smooth handles.
  - Do not use a dry cloth to clean smooth doors.

### **Exterior & Handles (Stainless Steel Models Only)**

- Soap and water
- Stainless steel cleaners
  - Never use CHLORIDE or cleaners with bleach to clean stainless steel. Clean stainless steel front and handles with non-abrasive soapy water and a

dishcloth. Rinse with clean water and a soft cloth. Use a non-abrasive stainless steel cleaner. These cleaners can be purchased at most home improvement or major department stores. Always follow manufacturer's instructions. Do not use household cleaners containing ammonia or bleach.

NOTE: Always clean, wipe and dry with the grain to prevent scratching. Wash the rest of the cabinet with warm water and mild liquid detergent. Rinse well, and wipe dry with a clean soft cloth

## **BEFORE YOU CALL**

### **AUTOMATIC ICE MAKER**

#### **Ice maker is not making any ice.**

- Ice maker is turned off.
  - Turn on ice maker. Press and hold the "ON-OFF" button for three seconds until the indicator light is on.
- Refrigerator is not connected to water line or water valve is not open.
  - Connect the unit to the household water supply and ensure the water valve is open.
- The water supply line is kinked.
  - Ensure that the supply line does not kink when the refrigerator is pushed into place against the wall.
- The water filter is not seated properly.
  - Remove and re-install the water filter. Remove by rotating it counter-clockwise (to the left) 90 degrees to release it. Re-install by sliding it into the filter housing as far as it will go with the grip end horizontal. Push lightly inward on the filter while rotating it clockwise (to the right). The filter will then pull itself inward as it is rotated. Rotate the filter 90 degrees until it stops and the grip end is vertical. You may be able to feel a very light click as the filter locks into place.
- The water filter may be clogged with foreign material.
  - If water dispenses slowly or not at all, or if the filter is six months old or older, it should be replaced.

#### **Ice maker is not making enough ice.**

- Ice maker is producing less ice than you expect.
  - The ice maker produces approximately 2.5 to 3 pounds every 24 hours depending on usage conditions.

- The water filter may be clogged with foreign material.
  - If water dispenses slower than normal, or if the filter is six months old or older, it should be replaced.
- The water supply line is kinked.
  - Ensure that the supply line does not kink when the refrigerator is pushed into place against the wall.
- Saddle valve on cold water pipe is clogged or restricted by foreign material.
  - Turn off household water line valve. Remove valve. Ensure that valve is not a self-piercing saddle valve. Clean valve. Replace valve if necessary.
- Heavy traffic, opening or closing of the doors excessively.
  - Press Quick Freeze to temporarily increase ice production rate. (Does not apply to Frigidaire Professional.)
- Freezer control is set too warm.
  - Set freezer control to colder setting to improve performance of the ice maker. Allow 24 hours for temperature to stabilize.

**Freezer ice maker will not stop making ice (select models).**

- Ice maker wire signal arm is being held down by a package in the freezer that has fallen against ice maker.
  - Move any item or frozen ice cubes that may block the signal arm from being in the off or upward position. See Automatic Ice Maker-Freezer section in manual.

**Ice cubes are freezing together.**

- Ice cubes are not being used frequently enough or interruption of power for prolonged time.
  - Remove ice container and discard ice. The ice maker will produce fresh supply. Ice should be used at least twice weekly to keep the cubes separated.
- Ice cubes are small or hollow (shells of ice with water inside). The hollow cubes break open in the bin and leak their water onto existing ice, which causes it to freeze together.
  - This generally occurs when the ice maker does not get enough water. This is usually the result of a clogged water filter or restricted water supply. Replace the water filter and if the condition still occurs check for a Saddle Valve, water valve not turned on all the way or kinked water supply line.



## **DISPENSER (Ice & Water)**

### **Dispenser will not dispense ice.**

- Dispenser lock out is engaged. (Does not apply to Frigidaire Professional.)
  - Press and hold control lock for three seconds.
- There is no ice in the bin to be dispensed.
  - See the “Ice maker is not making any ice” section above.
- The refrigerator doors are not completely closed.
  - Be sure the refrigerator doors are completely closed.
- Dispenser paddle has been pressed too long and the dispenser motor has overheated.
  - The motor overload protector will reset in about three minutes and then ice can be dispensed.

### **Ice dispenser is jammed.**

- Ice has melted and frozen around auger due to infrequent use, temperature fluctuations, and/or power outages.
  - Remove ice container, thaw, and empty the contents. Clean container, wipe dry, and replace in proper position. When new ice is made, dispenser should operate.
- Ice cubes are jammed between ice maker and back of ice container.
  - Remove ice cubes that are jamming the dispenser.

### **Dispenser will not dispense water.**

- Dispenser lock out is engaged. (Does not apply to Frigidaire Professional.)
  - Press and hold control lock for three seconds.
- Water filter not seated properly.
  - Remove and reinstall the water filter. Be sure to press inward as you rotate it clockwise to lock it in place.
- Water filter is clogged.
  - Replace filter cartridge. Be sure to press inward as you rotate it clockwise to lock it in place.
- Household water line valve is not open.
  - Open household water line valve. See CONCERN column AUTOMATIC ICE MAKER.

### **Water has an odd taste and/ or odor.**

- Water has not been dispensed for an extended period of time.
  - Draw and discard 10-12 glasses of water to freshen the supply.
- Unit not properly connected to cold water line.
  - Connect unit to cold water line that supplies water to the kitchen faucet.

### **Water not cold enough.**

- The water dispensing system is not designed to chill water.
  - Add ice to cup or container before dispensing water.

## **OPENING/CLOSING OF DOORS/DRAWERS**

### **Door(s) will not close.**

- Door was closed too hard, causing other door to open slightly.
  - Close both doors gently.
- Refrigerator is not level. It rocks on the floor when moved slightly.
  - Ensure floor is level and solid, and can adequately support the refrigerator.  
Contact a carpenter to correct a sagging or sloping floor.
- Refrigerator is touching a wall or cabinet.
  - Ensure floor is level and solid, and can adequately support the refrigerator.  
Contact a carpenter to correct a sagging or sloping floor.

### **Drawers are difficult to move.**

- Food is touching shelf on top of drawer.
  - Remove top layer of items in drawer.
- Track that drawers slide on is dirty.
  - Ensure drawer is properly installed on track.
  - Clean drawer, rollers, and track. See Care & Cleaning.

## **RUNNING OF REFRIGERATOR**

### **Compressor does not run.**

- Freezer control is set to "OF" or "0".
  - Set freezer control.

- Refrigerator is in defrost cycle.
  - This is normal for a fully automatic defrost refrigerator. The defrost cycle occurs periodically, lasting about 30 minutes.
- Plug at electrical outlet is disconnected.
  - Ensure plug is tightly pushed into outlet.
- House fuse blown or tripped circuit breaker.
  - Check/replace fuse with a 15 amp timedelay fuse. Reset circuit breaker.
- Power outage.
  - Check house lights. Call local electric company.

### **Refrigerator runs too much or too long.**

- Your variable speed compressor is designed to run 100% of the time except during the defrost cycle. At times it will run faster, such as after a defrost cycle.
  - It is normal for the compressor to run continuously except during defrost mode.

## **Digital Temperature Setting Display**

### **Digital temperature displays are flashing.**

- Electronic control system has detected a performance problem.
  - Call your Frigidaire service representative, who can interpret any messages or number codes flashing on the digital displays.

## **WATER/MOISTURE/FROST INSIDE REFRIGERATOR**

### **Moisture collects on inside of refrigerator walls.**

- Weather is hot and humid.
  - The rate of frost buildup and internal sweating increases.
- Door is slightly open.
  - See PROBLEM column OPENING/CLOSING OF DOORS/DRAWERS.

### **Water collects on bottom side of drawer cover.**

- Vegetables contain and give off moisture.
  - It is not unusual to have moisture on the bottom side of the cover.
  - Move humidity control (some models) to lower setting.

### **Water collects in bottom of drawer.**

- Washed vegetables and fruit drain while in the drawer.
  - Dry items before putting them in the drawer. Water collecting in bottom of drawer is normal.

### **WATER/MOISTURE/FROST OUTSIDE REFRIGERATOR**

#### **Moisture collects on outside of refrigerator or between doors.**

- Weather is humid.
  - This is normal in humid weather. When humidity is lower, the moisture should disappear.

### **Food in Fresh Food Compartment**

#### **Food is freezing.**

- Temperature setting is too low.
  - Move the setting to a higher degree.
- Temperature sensor is covered by food (right side of fresh food area).
  - Allow space for air flow to the sensor.
- Food is covering the air ports.
  - Allow space between the air ports and the food.

#### **Warning**

This content is compiled from multiple sources and is provided for reference purposes only. It may not be complete or fully applicable to all situations. If you are unable to resolve your issue, please contact the product manufacturer or an authorized service provider for official support.