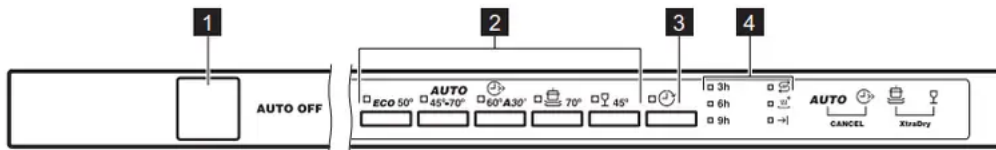


EASY START



1. On/off button
2. Programme buttons
3. Delay button
4. Indicators

INDICATORS

Indicator	Description
→	End indicator.
☼ ⁺	XtraDry indicator.
⊞	Salt indicator. It is always off while the programme operates.




BEAM-ON-FLOOR

The Beam-on-Floor is a light that shows on the kitchen floor below the appliance door.

- When the programme starts, a red light comes on and stays on for all the duration of the programme.
- When the programme is completed, a green light comes on.
- When the appliance has a malfunction, the red light flashes.

PROGRAMMES

The order of the programmes in the table may not reflect their sequence on the control panel.

Programme	Degree of soil Type of load	Programme phases	Consumption values 1)		
			Duration (min)	Energy (kWh)	Water (l)
ECO 2)	Normal soil Crockery and cutlery	<ul style="list-style-type: none"> ▪ Prewash ▪ Wash 50 °C ▪ Rinses ▪ Dry 	237	0.920	9.9
AUTO 3)	All Crockery, cut- lery, pots and pans	<ul style="list-style-type: none"> ▪ Prewash ▪ Wash from 45 °C to 70 °C ▪ Rinses ▪ Dry 	44 - 160	0.6 - 1.5	6 - 12
	Heavy soil Crockery, cut- lery, pots and pans	<ul style="list-style-type: none"> ▪ Prewash ▪ Wash 70 °C ▪ Rinses ▪ Dry 	155 - 171	1.5 - 1.7	14 - 15
 4)	Fresh soil Crockery and cutlery	<ul style="list-style-type: none"> ▪ Wash 60 °C or 65 °C ▪ Rinses 	30	0.8	10
	Normal or light soil Delicate crock- ery and glass- ware	<ul style="list-style-type: none"> ▪ Wash 45 °C ▪ Rinses ▪ Dry 	75 - 85	1.0 - 1.1	13 - 14

1) The pressure and the temperature of the water, the variations of the mains supply, the options and the quantity of dishes can change the values

2) This programme offers the most efficient use of water and energy consumption for crockery and cutlery with normal soil. This is the standard programme for test institutes.

3) The appliance senses the degree of soil and the quantity of items in the baskets. It automatically adjusts the temperature and quantity of water, energy consumption and programme duration.

4) This programme is suitable for washing a load or a half load with fresh or light soil in a short time.

SETTINGS

PROGRAMME SELECTION MODE

In the programme selection mode, it is possible to set a washing programme and to enter the user mode to change the appliance settings.

To enter the programme selection mode: Press on/off button.

The indicator **ECO** is on.

If the control panel does not indicate that the appliance is in the programme selection mode, follow the CANCEL procedure.

CANCEL PROCEDURE

Use CANCEL to:

- Cancel a currently running programme.
- Stop the countdown of Delay option.
- Bring the appliance back to the programme selection mode.

To CANCEL:

Press and hold simultaneously **AUTO** and  until the control panel indicates the appliance is in the programme selection mode.

USER MODE

The user mode allows changing the following appliance settings:

- Adjust the level of the water softener according to the water hardness.
- Activate or deactivate the acoustic signal indicating the end of a programme
- Activate or deactivate AirDry.

Before entering the user mode, make sure the appliance is in the programme selection mode.

To enter the user mode:

Press and hold simultaneously **AUTO** and  for at least 3 seconds


The indicators: **ECO**, **AUTO**, and  start flashing.

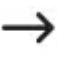
As the appliance stores the saved settings, there is no need to configure it before every cycle.

ADJUSTING THE WATER SOFTENER

Make sure the appliance is in user mode.

1. Press **ECO**.

The indicators **AUTO** and  are off. The indicator **ECO** still flashes.

The indicator  starts flashing. The number of flashes indicates the current water softener setting (e.g. 5 flashes + pause + 5 flashes... = level 5).

2. Press **ECO** to change the setting. Each pressing of the button **ECO** increases the level number by one. After reaching level 10, the count starts from level 1.

3. Press on/off to confirm and save the setting.

THE WATER HARDNESS TABLE

German degrees (°dH)	French degrees (°fH)	mmol/l	Clarke degrees	Water softener level
47 - 50	84 - 90	8.4 - 9.0	58 - 63	10
43 - 46	76 - 83	7.6 - 8.3	53 - 57	9
37 - 42	65 - 75	6.5 - 7.5	46 - 52	8
29 - 36	51 - 64	5.1 - 6.4	36 - 45	7
23 - 28	40 - 50	4.0 - 5.0	28 - 35	6
19 - 22	33 - 39	3.3 - 3.9	23 - 27	5 ¹⁾
15 - 18	26 - 32	2.6 - 3.2	18 - 22	4
11 - 14	19 - 25	1.9 - 2.5	13 - 17	3
4 - 10	7 - 18	0.7 - 1.8	5 - 12	2
<4	<7	<0.7	< 5	1 ²⁾


1) Factory setting

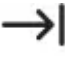
2) Do not use salt at this level.

ACTIVATING THE ACOUSTIC SIGNAL AT THE END OF A PROGRAMME

Make sure the appliance is in user mode.

1. Press **AUTO**.

The indicators: **ECO** and  are off. The indicator **AUTO** still flashes.

The indicator  shows the current setting. If on = the acoustic signal is active. If off = the acoustic signal is disabled.


2. Press **AUTO** to change the setting.

3. Press on/off to confirm and save the setting.


HOW TO DEACTIVATE AIRDRY

AirDry improves the drying results with less energy consumption.



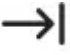
By default, AirDry is activated with all programmes excluding  (if applicable), but it is possible to deactivate it.


Make sure the appliance is in user mode.

1. Press 

The indicators: **ECO** and **AUTO** are off.

The indicator  still flashes.

The indicator  indicates the current setting. If on = AirDry is on, if off = AirDry is off.

2. Press  to change the setting.

3. Press on/off to confirm and save the setting.

DAILY USE

1. Open the water tap.

2. Press the on/off button to activate the appliance.

Make sure that the appliance is in programme selection mode.

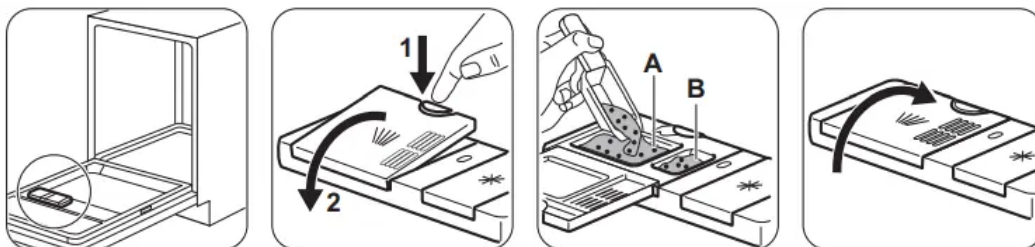
- If the salt indicator is on, fill the salt container.

3. Load the baskets.

4. Add the detergent.

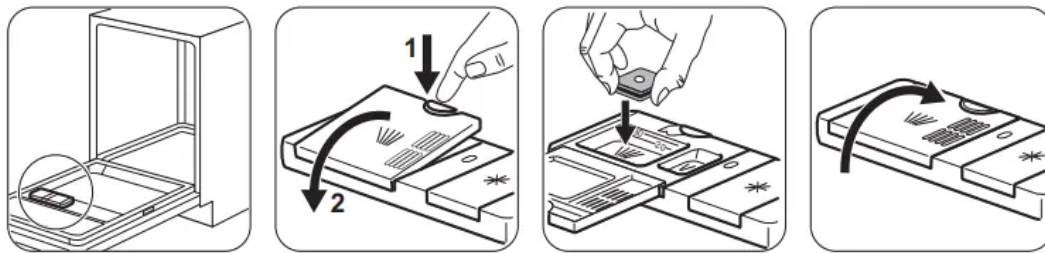
5. Set and start the correct programme for the type of load and the degree of soil.

ADDING DETERGENT



If the programme has a prewash phase, put a small quantity of detergent also in compartment B.

ADDING MULTI-TABLETS



- Adjust the water softener to the lowest level.

SETTING AND STARTING A PROGRAMME

The AUTO OFF function

This function decreases energy consumption by deactivating automatically the appliance when it is not operating. The function comes into operation:

- 5 minutes after the completion of the programme.
- After 5 minutes if the programme has not started.

Starting a programme

1. Open the appliance door and keep it ajar.
2. Press on/off to activate the appliance. Make sure the appliance is in the programme selection mode.
3. Select a programme from the control panel by pushing a desired programme button.

A related programme indicator is on.

4. Close the appliance door to start the programme.

The appliance starts working.


Starting programme with Delay option

Make sure the appliance is on and in the programme selection mode.

1. Select a programme from the control panel. A related programme indicator is on.

2. Press the button  to delay the programme start.

The indicator  is on.

3. Continue pressing  to extend the countdown (3, 6 or 9 hours).

A related indicator on the control panel indicates the countdown time.

4. Close the appliance door to start the countdown.

The programme starts automatically when the countdown is complete.

How to activate XtraDry

Press and hold simultaneously  and  until the indicator  is on.

Opening the door while the appliance operates

Opening the door while a programme is running stops the appliance. It may affect the energy consumption and the programme duration. After closing the door, the appliance continues from the point of interruption.

End of the programme

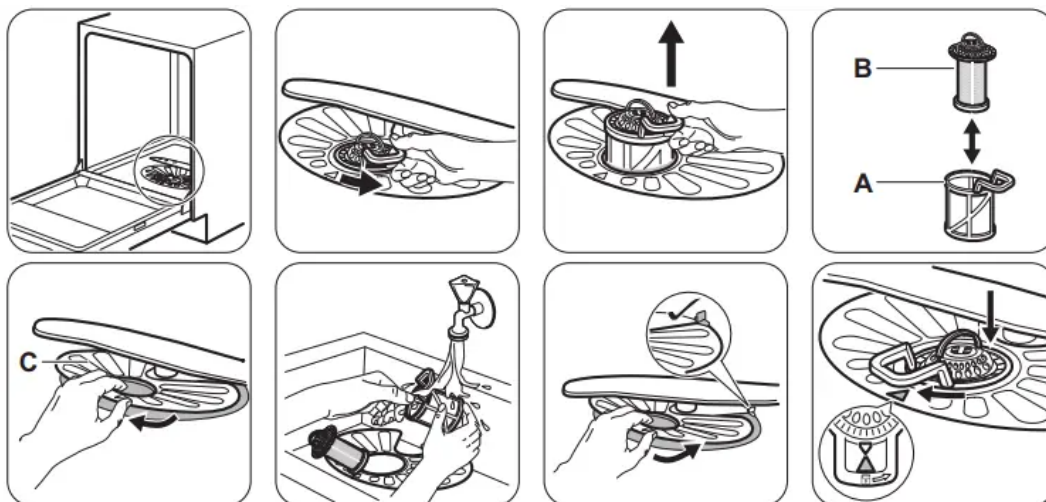
When the programme is completed the indicator  is on.

1. Press the on/off button or wait for the AUTO OFF function to deactivate the appliance. If you open the door before the activation of AUTO OFF, the appliance is automatically deactivated.
2. Close the water tap.

CARE AND CLEANING

WARNING! Before maintenance, deactivate the appliance and disconnect the mains plug from the main socket.

CLEANING THE FILTERS



- Make sure that there are no residues of food or soil in or around the edge of the sump.
- Put back in place the flat filter (C). Make sure that it is correctly positioned under the 2 guides.
- Reassemble the filters (A) and (B).
- Put back the filter (A) in the flat filter (C). Turn it clockwise until it locks.

CLEANING THE SPRAY ARMS

Do not remove the spray arms. If the holes in the spray arms are clogged, remove remaining parts of soil with a thin pointed object.

EXTERNAL CLEANING

- Clean the appliance with a moist soft cloth.
- Only use neutral detergents.
- Do not use abrasive products, abrasive cleaning pads or solvents.

INTERNAL CLEANING

- Carefully clean the appliance, including the rubber gasket of the door, with a soft damp cloth.
- If you regularly use short duration programmes, these can leave deposits of grease and limescale inside the appliance. To prevent this, we recommend to run long duration programmes at least 2 times per month.
- To maintain the performance of your appliance at its best, we recommend to use monthly a specific cleaning product for dishwashers.

TROUBLESHOOTING

If the appliance does not start or it stops during operation, before you contact an Authorised Service Centre, check if you can solve the problem by yourself with the help of the information in the table.

With some problems the end indicator flashes intermittently indicating a malfunction.

The majority of problems that can occur can be solved without the need to contact an Authorised Service Centre.

Problem and alarm code	Possible cause and solution
<p>You cannot activate the appliance.</p>	<ul style="list-style-type: none"> • Make sure that the mains plug is connected to the mains socket. • Make sure that there is no damaged fuse in the fuse box.
<p>The programme does not start</p>	<ul style="list-style-type: none"> • Make sure that the appliance door is closed. • If the delay start is set, cancel the setting or wait for the end of the countdown • The appliance has started the procedure to recharge the resin inside the water softener. The duration of the procedure is approximately 5 minutes.
<p>The appliance does not fill with water.</p> <ul style="list-style-type: none"> • The end indicator flashes 1 time intermittently. • Acoustic signal sounds 1 time intermittently. 	<ul style="list-style-type: none"> • Make sure that the water tap is open. • Make sure that the pressure of the water supply is not too low. For this information, contact your local water authority. • Make sure that the water tap is not clogged. • Make sure that the filter in the inlet hose is not clogged. • Make sure that the inlet hose has no kinks or bends.
<p>The appliance does not drain the water.</p> <ul style="list-style-type: none"> • The end indicator flashes 2 times intermittently. • Acoustic signal sounds 2 times intermittently. 	<ul style="list-style-type: none"> • Make sure that the sink spigot is not clogged. • Make sure that the drain hose has no kinks or bends.
<p>The anti-flood device is on.</p>	<ul style="list-style-type: none"> • Close the water tap and contact an Authorised Service Centre

<ul style="list-style-type: none"> • The end indicator flashes 3 times intermittently. • Acoustic signal sounds 3 times intermittently. 	
<p>The appliance stops and starts more times during operation.</p>	<ul style="list-style-type: none"> • It is normal. It provides optimal cleaning results and energy savings.
<p>The program lasts too long.</p>	<ul style="list-style-type: none"> • If the delayed start option is set, cancel the delay setting or wait for the end of the countdown.
<p>Small leak from the appliance door.</p>	<ul style="list-style-type: none"> • The appliance is not levelled. Loosen or tighten the adjustable feet (if applicable). • The appliance door is not centred on the tub. Adjust the rear foot (if applicable).
<p>The appliance door is difficult to close.</p>	<ul style="list-style-type: none"> • The appliance is not levelled. Loosen or tighten the adjustable feet (if applicable). • Parts of the tableware are protruding from the baskets.
<p>Rattling/knocking sounds from inside the appliance.</p>	<ul style="list-style-type: none"> • The tableware is not properly arranged in the baskets. Refer to basket loading leaflet. • Make sure that the spray arms can rotate freely.
<p>The appliance trips the circuit-breaker.</p>	<ul style="list-style-type: none"> • The amperage is insufficient to supply simultaneously all the appliances in use. Check the socket amperage and the capacity of the meter or turn off one of the appliances in use. • Internal electrical fault of the appliance. Contact an Authorised Service Centre.

THE WASHING AND DRYING RESULTS ARE NOT SATISFACTORY



Problem	Possible cause and solution
Poor washing results.	<ul style="list-style-type: none"> • Refer to "Daily use", "Hints and tips" and basket loading leaflet. • Use more intensive washing programmes. • Clean spray arm jets and filter. Refer to "Care and Cleaning".
Poor drying results.	<ul style="list-style-type: none"> • Tableware has been left for too long inside a closed appliance. • There is no rinse aid or the dosage of rinse aid is not enough. Set the rinse aid dispenser to a higher level. • Plastic items may need to be towel dried. • For the best drying performance activate the option XtraDry and set AirDry. • We recommend to always use rinse aid, even in combination with multi-tablets.
There are whitish streaks or bluish layers on glasses and dishes.	<ul style="list-style-type: none"> • The release quantity of rinse aid is too much. Adjust the rinse aid level to a lower level. • The quantity of detergent is too much.
There are stains and dry water drops on glasses and dishes.	<ul style="list-style-type: none"> • The released quantity of rinse aid is not sufficient. Adjust the rinse aid level to a higher level. • The quality of the rinse aid can be the cause.
The dishes are wet.	<ul style="list-style-type: none"> • For the best drying performance activate the option XtraDry and set AirDry . • The programme does not have a drying phase or has a drying phase with low temperature. • The rinse aid dispenser is empty. • The quality of the rinse aid can be the cause • The quality of the multi-tablets can be the cause. Try a different brand or activate the

	<p>rinse aid dispenser and use rinse aid and multi-tablets together.</p>
<p>The interior of the appliance is wet.</p>	<ul style="list-style-type: none"> • This is not a defect of the appliance. it is caused by the humidity in the air that condenses on the walls.
<p>Unusual foam during washing.</p>	<ul style="list-style-type: none"> • Use the detergent for dishwashers only. • There is a leak in the rinse aid dispenser. Contact an Authorised Service Centre.
<p>Traces of rust on cutlery.</p>	<ul style="list-style-type: none"> • There is too much salt in the water used for washing. Refer to "The water softener". • Silver and stainless steel cutlery were placed together. Avoid to put silver and stainless steel items close together
<p>There are residues of detergent in the dispenser at the end of the programme.</p>	<ul style="list-style-type: none"> • The detergent tablet got stuck in the dispenser and therefore was not completely washed away by water. • Water cannot wash away the detergent from the dispenser. Make sure that the spray arm is not blocked or clogged. • Make sure that items in the baskets do not impede the lid of the detergent dispenser from opening.
<p>Odours inside the appliance.</p>	<ul style="list-style-type: none"> • Refer to "Internal cleaning".
<p>Limescale deposits on the tableware, on the tub and on the inside of the door.</p>	<ul style="list-style-type: none"> • The level of salt is low, check the refill indicator. • The cap of the salt container is loose. • Your tap water is hard. Refer to "The water softener". • Even using multi-functional tabs use salt and set regeneration of the water softener. Refer to "The water softener".

	<ul style="list-style-type: none"> • If lime scale deposits still remain, clean the appliance with appliance cleaners which are particularly suitable for this purpose. • Try different detergent. • Contact the detergent manufacturer.
Dull, discoloured or chipped tableware.	<ul style="list-style-type: none"> • Make sure that only dishwasher-safe items are washed in the appliance. • Load and unload the basket carefully. Refer to basket loading leaflet. • Place delicate items in the upper basket.

PRODUCT INFORMATION SHEET

Trade Mark	Zanussi
Model	ZDT24004FA 911535206
Rated capacity (standard place settings)	13
Energy efficiency class	A++
Energy consumption in kWh per year, based on 280 standard cleaning cycles using cold water fill and the consumption of the low power modes. The actual energy consumption will depend on how the appliance is used.	262
Energy consumption of standard cleaning cycle (kWh)	0.920
Power consumption in off mode (W)	0.50
Power consumption in left-on mode (W)	5.0
Water consumption in litres per year, based on 280 standard cleaning cycles. The actual water consumption will depend on how the appliance is used	2775
Drying efficiency class on a scale from G (least efficient) to A (most efficient)	A
The 'standard programme' is the standard cleaning cycle to which the information in the label and the fiche relates. This programme is suitable to clean normally soiled tableware and is the most efficient programme in terms of combined energy and water consumption. It is indicated as "Eco" programme.	ECO
Programme time of standard cleaning cycle (min)	237
Duration of the left-on mode (min)	5
Sound power level (db(A) re 1pW)	47
Built in appliance Y/N	Yes

ADDITIONAL TECHNICAL INFORMATION

Dimensions	Width / height / depth (mm)	596 / 818 - 898 / 550
Electrical connection ¹⁾	Voltage (V)	220 - 240
	Frequency (Hz)	50
Water supply pressure	Min. / max. bar (MPa)	0.5 (0.05) / 8 (0.8)
Water supply	Cold water or hot water ²⁾	max 60 °C

1) Refer to the rating plate for other values.

2) If the hot water comes from alternative source of energy (e.g. solar panels), use the hot water supply to decrease energy consumption.

Warning

This content is compiled from multiple sources and is provided for reference purposes only. It may not be complete or fully applicable to all situations. If you are unable to resolve your issue, please contact the product manufacturer or an authorized service provider for official support.