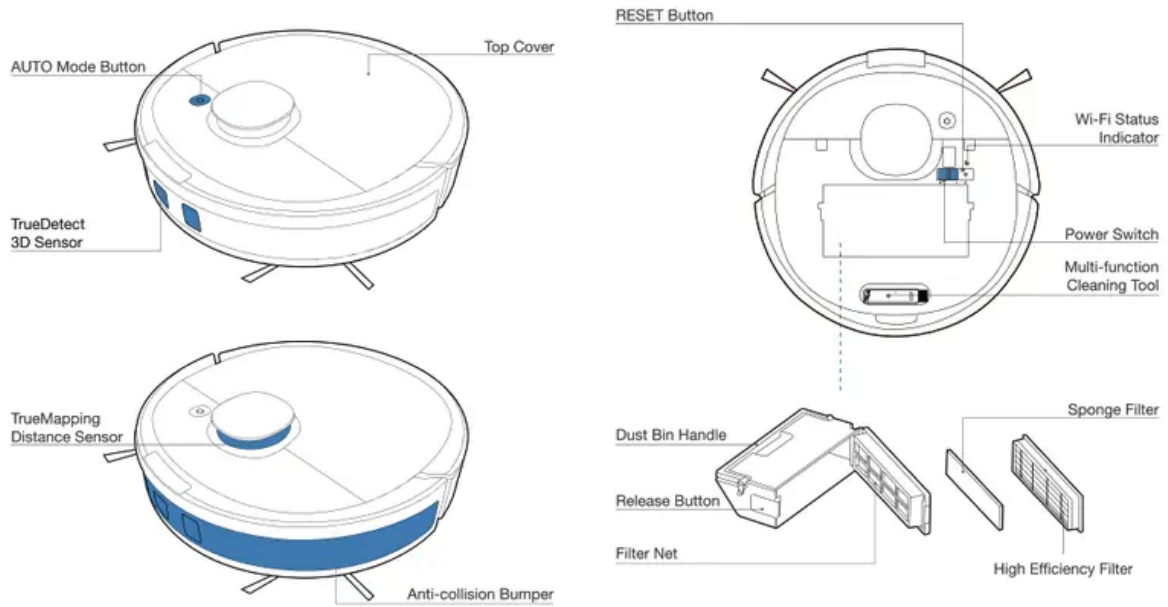
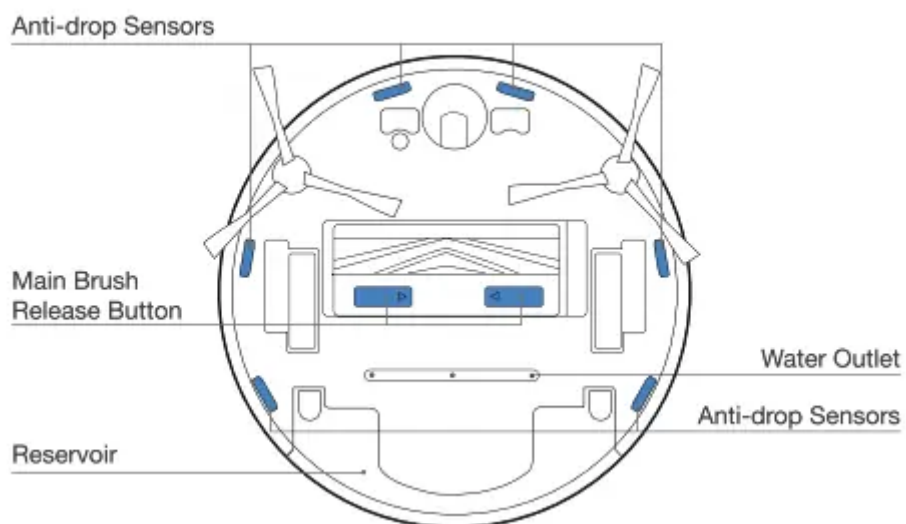
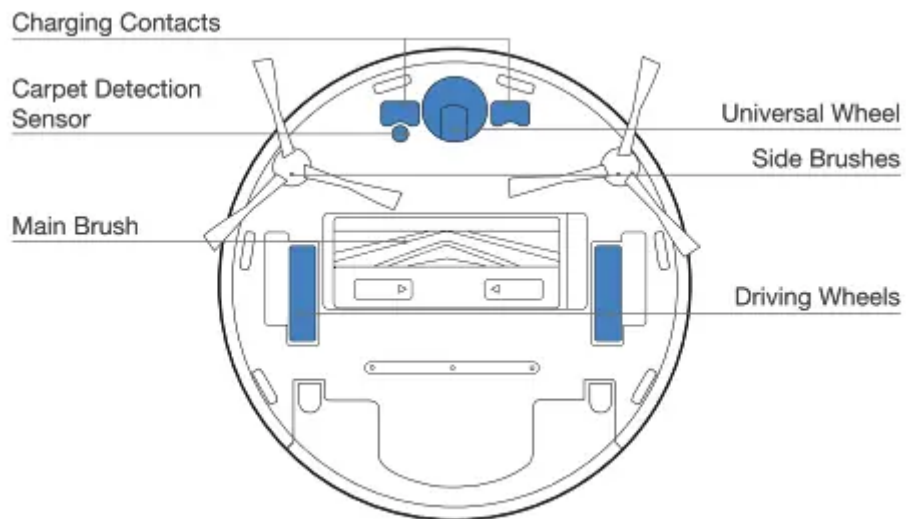


Product Diagram

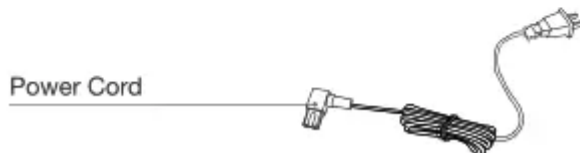
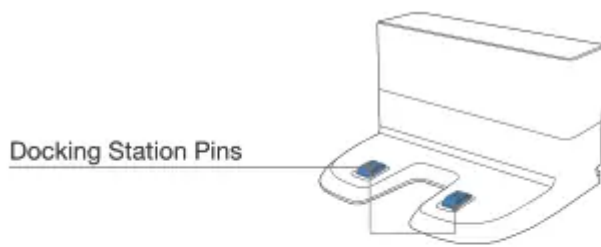
Robot



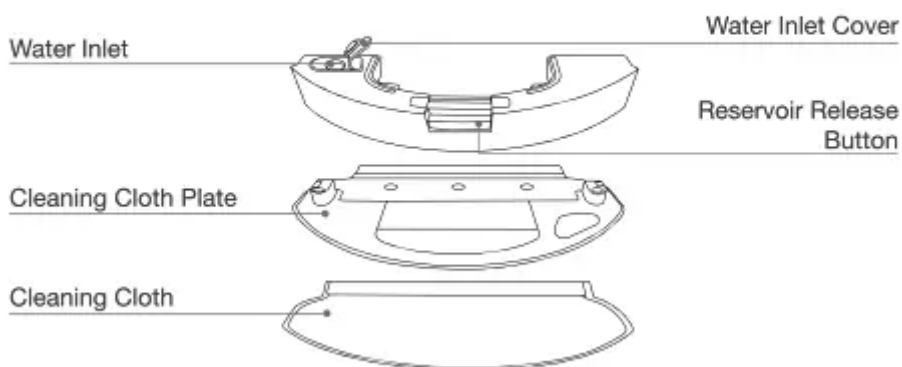
Bottom View



Docking Station



Reservoir



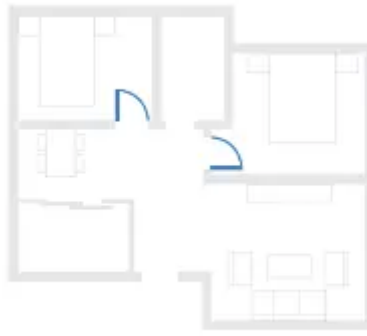
Operating and Programming

Notes Before Cleaning

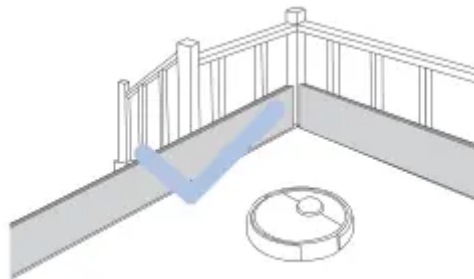
Tidy up the area to be cleaned by putting urniture, such as chairs, in their proper place.



During the first use, make sure each room door is open to help DEEBOT fully explore your house.



It may be necessary to place a physical barrier at the edge of a drop to stop the unit from falling over the edge.



Put away objects including cables, cloths and slippers, etc. on the floor to improve the cleaning efficiency.



Before using the product on a rug with tasseled edges, please fold the rug edges under.



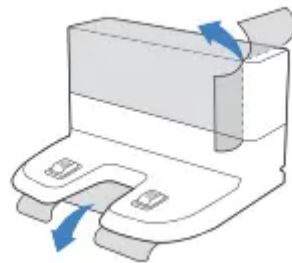
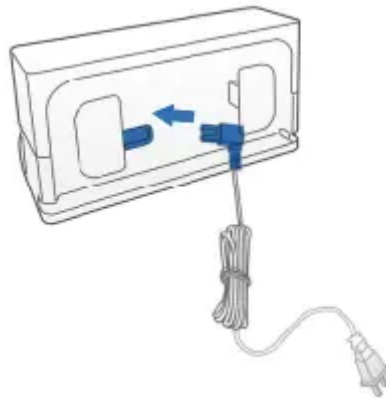
Please do not stand in narrow spaces, such as hallways, and make sure not to block the Detection Sensor.

Quick Start

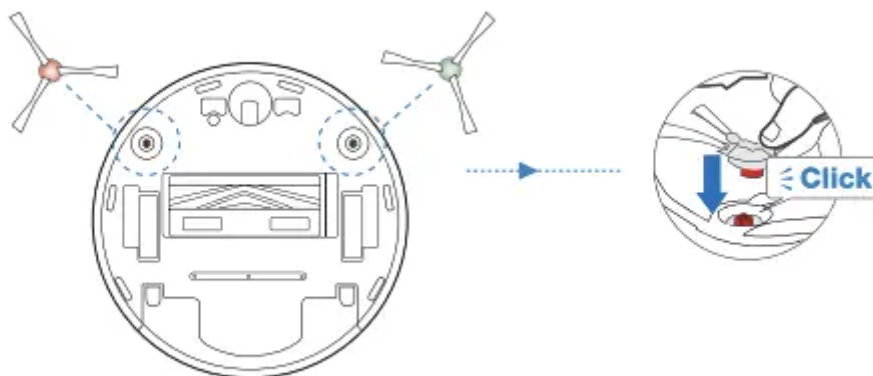
1. Remove Protective Strips and Films



2. Assemble Docking Station

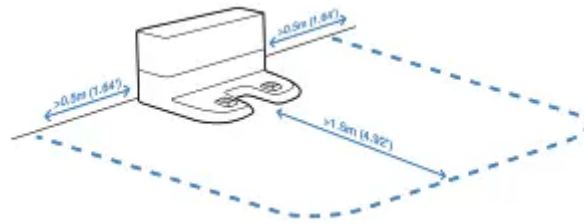


3. Install Side Brushes

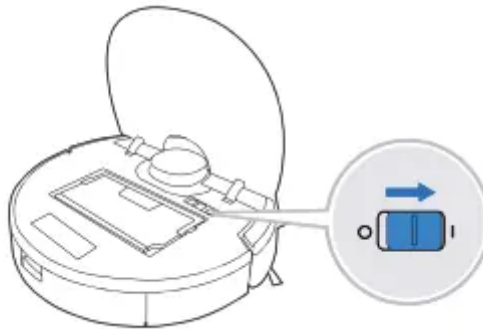


Charging DEEBOT

1. Docking Station Placement





2. Power ON

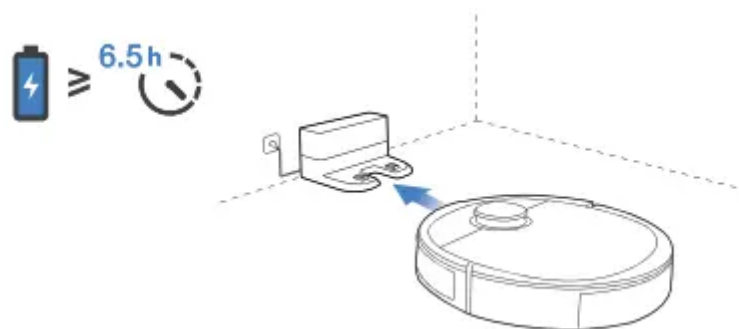


Note: I = ON, O = OFF.

DEEBOT cannot be charged when being powered OFF.

3. Charge DEEBOT

Empty remaining water from the Reservoir and remove the Reservoir and the Cleaning Cloth Plate before charging DEEBOT.  flashes when DEEBOT is charging.  goes out when DEEBOT is fully charged.



You can also purchase an Auto-Empty Station that automatically empties your DEEBOT's dustbin.

ECOVACS HOME App


To enjoy all available features, it is recommended to control your DEEBOT via the ECOVACS HOME app.

Before you start, make sure that:

- Your mobile phone is connected to a Wi-Fi network.
- The 2.4GHz band wireless signal is enabled on your router.
- The Wi-Fi indicator light on DEEBOT is slowly flashing.



Wi-Fi Indicator Light

	Slowly flashing	Disconnected to Wi-Fi or waiting for Wi-Fi connection
	Rapidly flashing	Connecting to Wi-Fi
	Solid	Connected to Wi-Fi

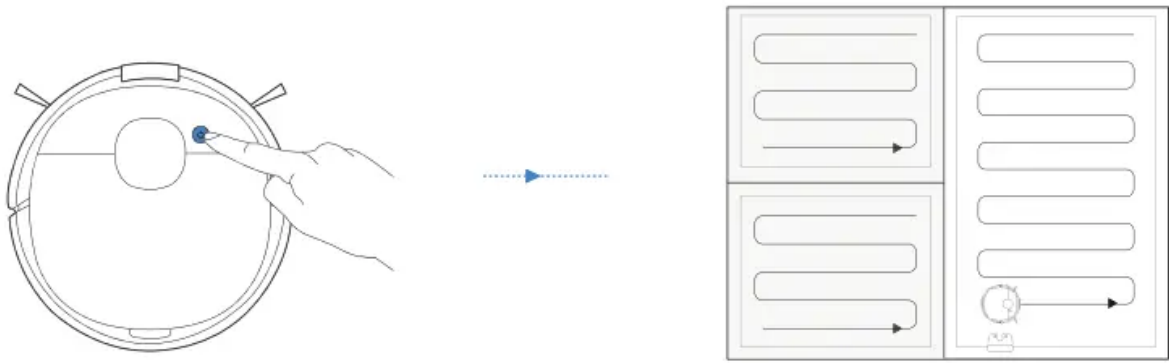
Tips:

If you have any problems during the Wi-Fi setup process, refer to the Troubleshooting > Wi-Fi Connection section in this manual.

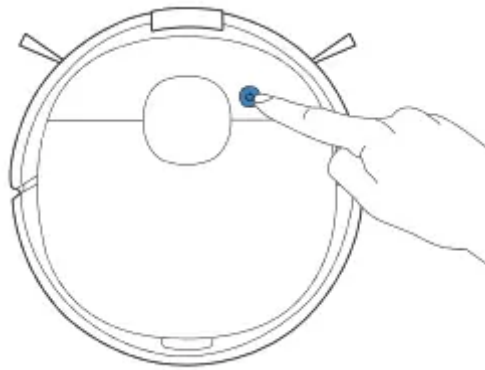
Operating DEEBOT

During the first cleaning, please supervise DEEBOT and assist it should there be a problem.

1. Start



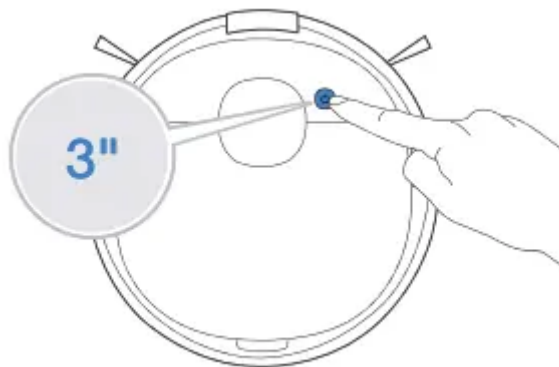
2. Pause



Note: The robot's Control Panel stops glowing after the robot is paused for a few minutes. Press the AUTO Mode Button on DEEBOT to wake up the robot.

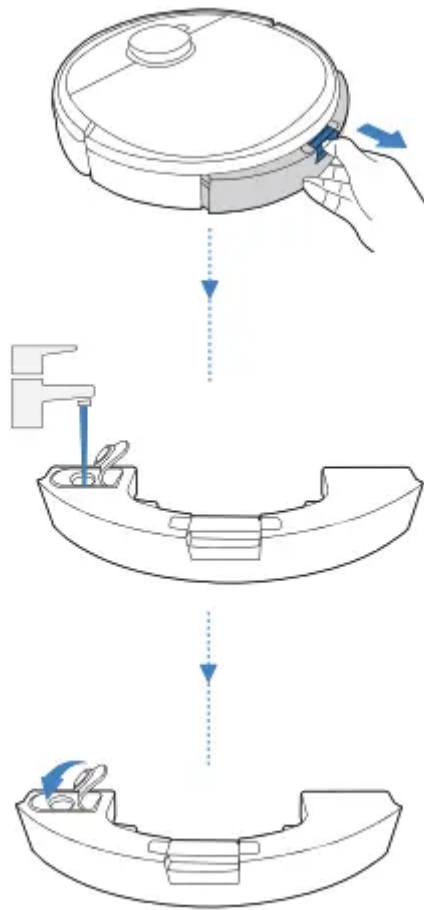
3. Return to Charge

Pressing  for 3 seconds to send DEEBOT back to the Docking Station.



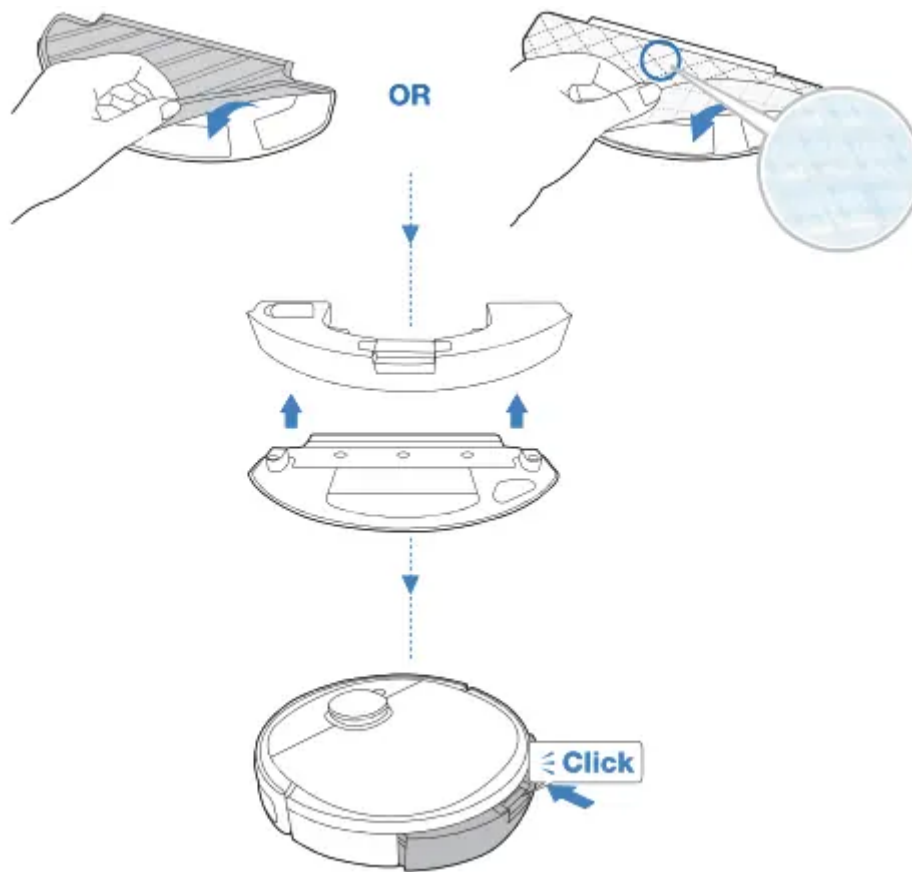
OZMO Mopping System

Note: To prolong the service life of the reservoir, it is recommended to use purified water or softened water for OZMO mopping system.



Note: When DEEBOT is mopping, DEEBOT automatically detects the carpet and keeps away from it. If you need to clean the carpet, please uninstall the cleaning cloth plate first.

* When attaching the Disposable Cleaning Cloth, make sure the fluffy side is attached to the plate, and the dotted side faces out.



You can also purchase an electric oscillating mopping pack that provides intensive mopping performance.

Maintenance

Regular Maintenance

To keep DEEBOT running at peak performance, perform maintenance tasks and replace parts with the following frequencies:

Robot Part	Maintenance Frequency	Replacement Frequency
Disposable Cleaning Cloth	After each use	Replace after each use
Washable/Reusable Microfiber Cleaning Cloth	After each use	Every 50 washes
Reservoir/Cleaning Cloth Plate	After each use	/
Side Brush	Once every 2 weeks	Every 3-6 months
Main Brush	Once per week	Every 6-12 months
Sponge Filter/ High Efficiency Filter	Once per week	Every 3-6 months
TrueDetect 3D Sensor Universal Wheel Anti-Drop Sensors Bumper Charging Contacts Docking Station Pins	Once per week	/

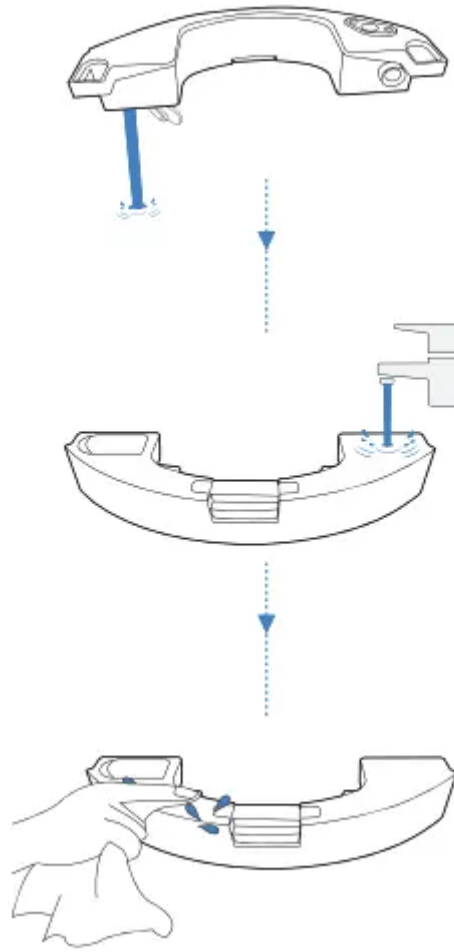
A multi-function Cleaning Tool is provided for easy maintenance. Handle with care, this cleaning tool has sharp edges.

Note: ECOVACS manufactures various replacement parts and fittings. Please contact Customer Service for more information on replacement parts.

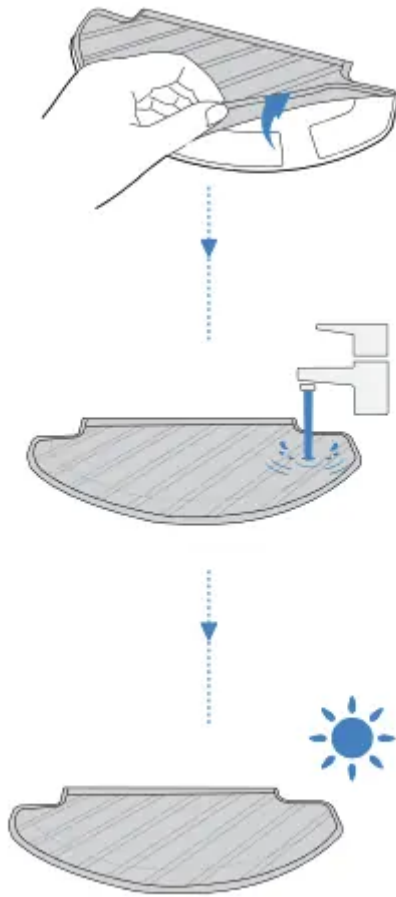
OZMO Mopping System

Before performing cleaning and maintenance tasks on DEEBOT, turn the robot OFF and unplug the Docking Station

1.



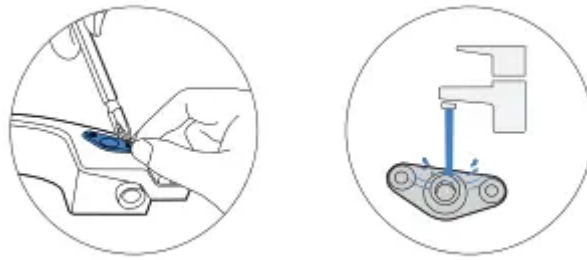
2. Washable/Reusable Microfiber Cleaning Cloth



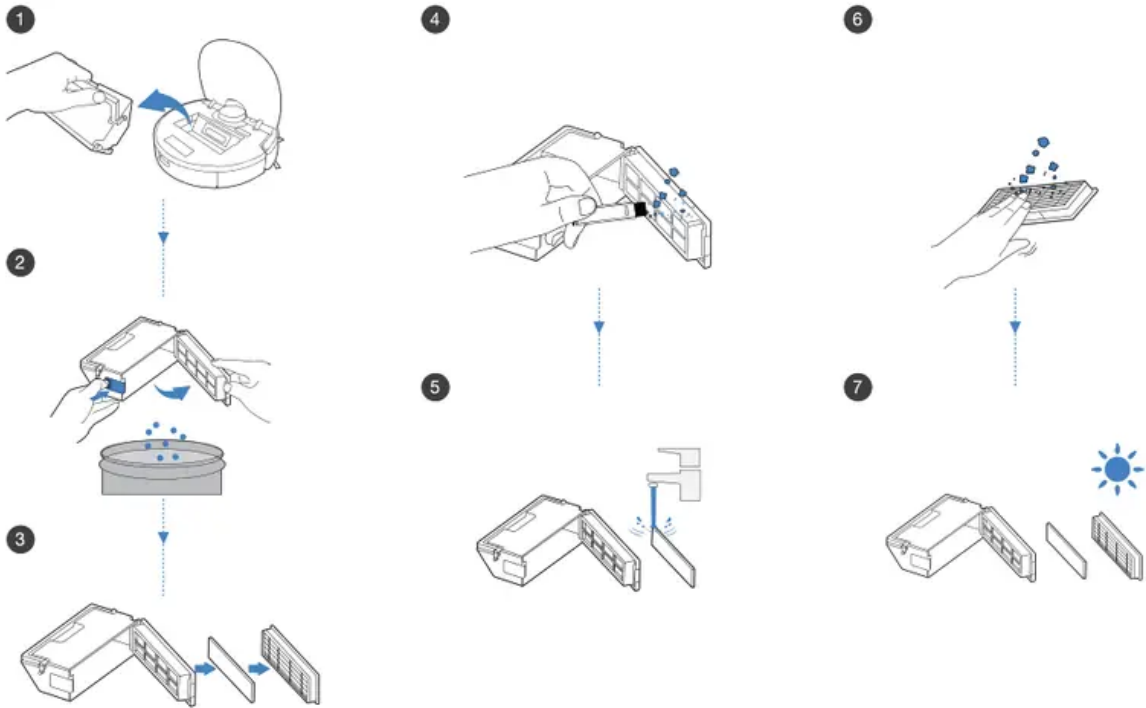
Disposable Cleaning Cloth



Clean the water inlet filter on the bottom of the Reservoir if it is clogged.

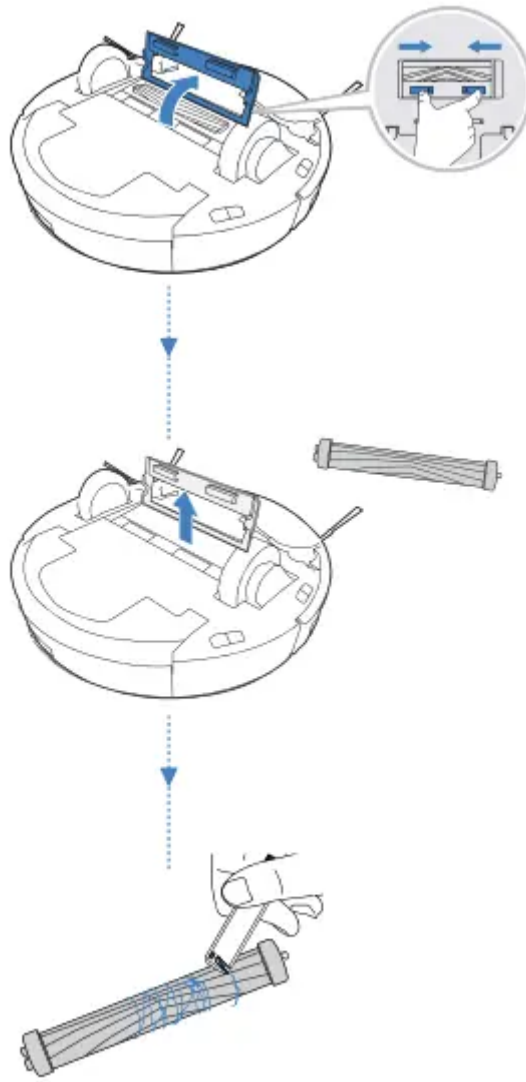


Dust Bin and Filters

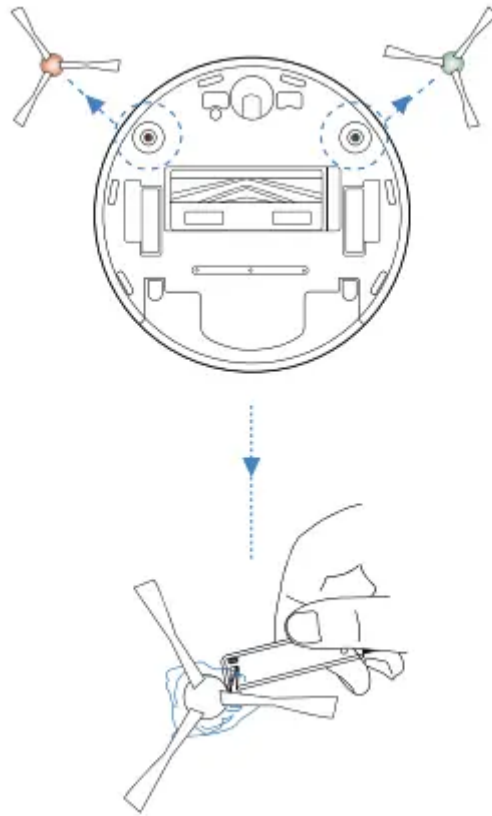


Main Brush and Side Brushes

Main Brush

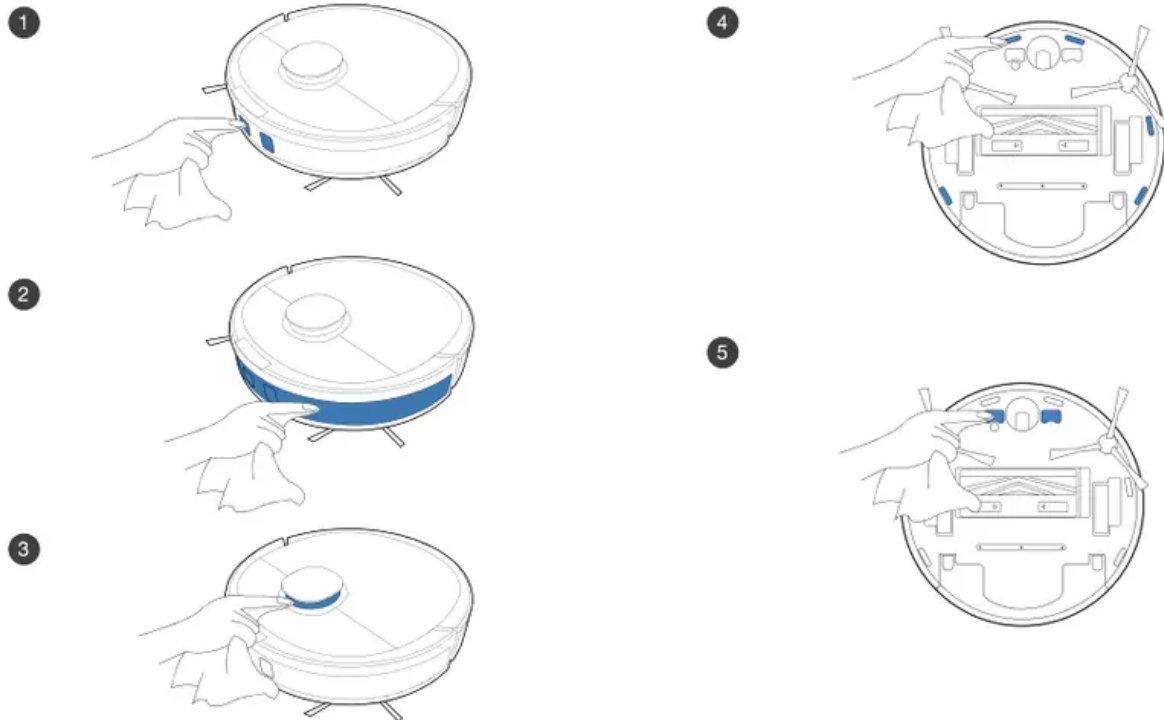


Side Brushes



Other Components

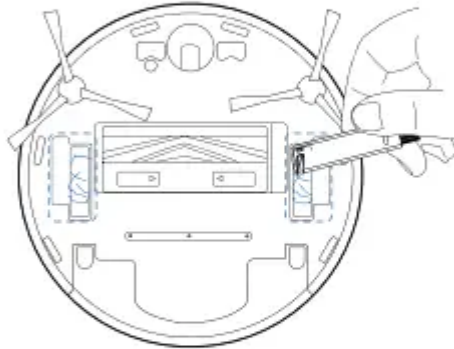
Note: Before cleaning the robot's Charging Contacts and Docking Station Pins, turn the robot OFF and unplug the Docking Station.



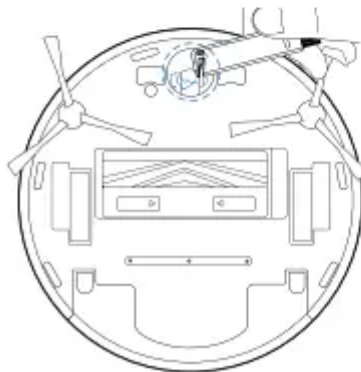
6



7

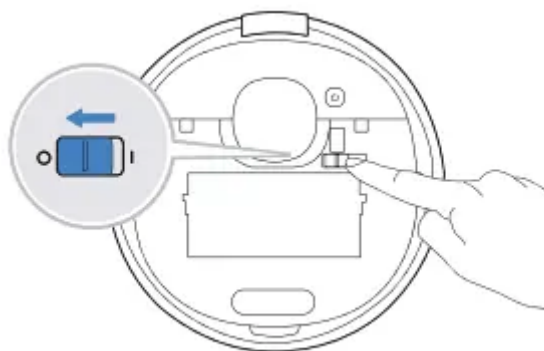


8



Storage

If DEEBOT will not be used for a while, fully charge DEEBOT and power OFF before storage. Charge DEEBOT every 1.5 month to prevent battery drain.



Note: When DEEBOT is not cleaning, it is recommended to keep DEEBOT powered ON and charging.

Indicator Light

DEEBOT will tell you something is wrong with an indicator light and voice report. More detailed support is available through the ECOVACS HOME and online website.

Indicator Light	Scenario
AUTO Mode Button glows a solid WHITE	The robot is cleaning
	The robot is paused while cleaning
AUTO Mode Button flashes WHITE	The robot is charging
	The robot is starting
	The robot is relocating
AUTO Mode Button glows a solid RED	The robot has low battery
AUTO Mode Button flashes RED	The robot has a problem

Troubleshooting

Troubleshooting



Malfunction	Possible Causes	Solutions
DEEBOT is not charging.	DEEBOT is not switched ON.	Switch ON DEEBOT.
	DEEBOT has not connected to the Docking Station.	Be sure that the robot's Charging Contacts have connected to the Docking Station Pins.
	The Power Cord is not connected to the Docking Station.	Make sure the Power Cord is firmly connected to the Docking Station.
	The Docking Station is not connected to the power supply.	Make sure the Docking Station is connected to the power supply.
	The battery is completely discharged.	Please contact Customer Care for help.
DEEBOT cannot return to the Docking Station.	The Docking Station is not correctly placed.	Refer to section 3.2 to correctly place the Docking Station.
	The Docking Station is not correctly connected.	Make sure the Docking Station is correctly connected.
	The Docking Station is manually moved during the cleaning.	It is suggested not to move the Docking Station during the cleaning.
	DEEBOT is paused for more than 90 minutes.	It is suggested not to pause DEEBOT for more than 90 minutes.
	DEEBOT did not start cleaning from the Docking Station.	Make sure DEEBOT starts cleaning from the Docking Station.
		DEEBOT will try various ways to free itself. If it is unsuccessful,



DEEBOT gets stuck while working and stops.	DEEBOT is tangled with something on the floor (electrical wires, curtains, carpet fringing, etc.).	manually remove the obstacles and restart.
	DEEBOT might be stuck under furniture with an entrance of similar height.	Please set a physical barrier, or set a Virtual Boundary in the ECOVACS HOME App.
DEEBOT returns to the Docking Station before it has finished cleaning.	Working time varies according to floor surface, room complexity and the Cleaning Mode selected. When the battery gets low, DEEBOT automatically switches to Recharge Mode and returns to the Docking Station to recharge itself.	Turn on Continuous Cleaning function in ECOVACS HOME App. DEEBOT will automatically resume the uncompleted cleaning cycle when Continuous Cleaning is enabled.
	DEEBOT is unable to reach certain areas blocked by furniture or barriers.	Tidy up the area to be cleaned by putting furniture and small objects in their proper place.
	The Docking Station is too distant from the center of the house.	Please place the Docking Station against the wall of a central room of the house.
DEEBOT does not clean automatically at the scheduled time.	Time Scheduling function is cancelled.	Program DEEBOT to clean at specific times using the ECOVACS HOME App.
	DEEBOT is switched OFF.	Switch ON DEEBOT.
	The robot's battery is low.	Keep DEEBOT switched ON and connected to the Docking Station to make sure it has a full battery to work at any time.
The water is not coming out of the Reservoir when	The water inlet filter on the bottom of Reservoir is clogged.	Unscrew the water inlet on the bottom of Reservoir and clean the filter as described in Section 4.1.



DEEBOT mopping.	is		
		The Reservoir runs out of water.	Add water into the Reservoir.
		The water outlets on the bottom of DEEBOT are clogged.	Check the water outlets on the bottom and clean.
DEEBOT misses cleaning spots to be cleaned, or repeats cleaning the area cleaned.		The cleaning cycle is interfered by small objects or barriers on the floor.	Remove power cords and small objects from the floor to ensure cleaning efficiency. DEEBOT will automatically clean the area missed, please avoid moving DEEBOT manually or block the path during the cleaning cycle.
		DEEBOT is working on slippery polished floors.	Make sure the floor wax is dried before DEEBOT starts cleaning.
		DEEBOT is unable to reach certain areas blocked by furniture or barriers.	Tidy up the area to be cleaned by putting furniture and small objects in their proper place.
		The TrueMapping Distance Sensor is blocked.	Remove the objects that are blocking the TrueMapping Distance Sensor.
DEEBOT is making too much noise when cleaning.		DEEBOT is tangled or blocked with debris.	Clean DEEBOT as described in section 4 Maintenance and restart. If the trouble persists, please contact Customer Care.
DEEBOT is not able to connect to the home Wi-Fi network.		Incorrect home Wi-Fi username or password entered.	Enter the correct home Wi-Fi username and password.
		Incorrect App installed.	Please download and install ECOVACS HOME App.



	DEEBOT is not within range of your home Wi-Fi signal.	Make sure DEEBOT is within range of your home Wi-Fi signal.
	Network setup started before DEEBOT was ready.	Turn ON Power Switch. Press the RESET Button. DEEBOT is ready for network setup when its Wi-Fi Indicator light flashes slowly.
	DEEBOT does not support 5 GHz Wi-Fi.	Make sure the robot has been connected with 2.4 GHz Wi-Fi network.
	Your smartphone's operating system needs to be updated.	Update your smartphone's operating system. The ECOVACS App runs on iOS 9.0 and above, Android 4.0 and above.
DEEBOT does not clean the whole area.	The cleaning area is not tidy.	Remove small objects from the floor and tidy up the cleaning area before DEEBOT starts cleaning.
DEEBOT reservoir drops out of place during use.	The reservoir is not correctly installed.	Make sure DEEBOT reservoir clicks into place when installing.
DEEBOT Side Brushes drop out of place during use.	The Side Brushes are not correctly installed.	Make sure the Side Brushes click into place when installing.

Wi-Fi Connection

Before Wi-Fi setup, make sure DEEBOT, mobile phone, and Wi-Fi network meet the following requirements.

DEEBOT and Mobile Phone Requirements

- DEEBOT is fully charged and the power switch of DEEBOT is turned on.
- Wi-Fi status light slowly flashes.
- Turn off mobile phone's cellular data (you can turn it back on after setup).

Wi-Fi Network Requirements

- You are using a 2.4GHz or 2.4/5 GHz mixed network.
- Your router supports 802.11 b/g/n and IPv4 protocol.
- Do not use a VPN (Virtual Private Network) or Proxy Server.
- Do not use a hidden network.
- WPA and WPA2 using TKIP, PSK, AES/CCMP encryption.
- WEP EAP (Enterprise Authentication Protocol) is not supported.
- Use Wi-Fi channels 1-11 in North America and channels 1-13 outside North America (refer to local regulatory agency).
- If you are using a network extender/repeater, the network name (SSID) and password are the same as your primary network.

Warning

This content is compiled from multiple sources and is provided for reference purposes only. It may not be complete or fully applicable to all situations. If you are unable to resolve your issue, please contact the product manufacturer or an authorized service provider for official support.