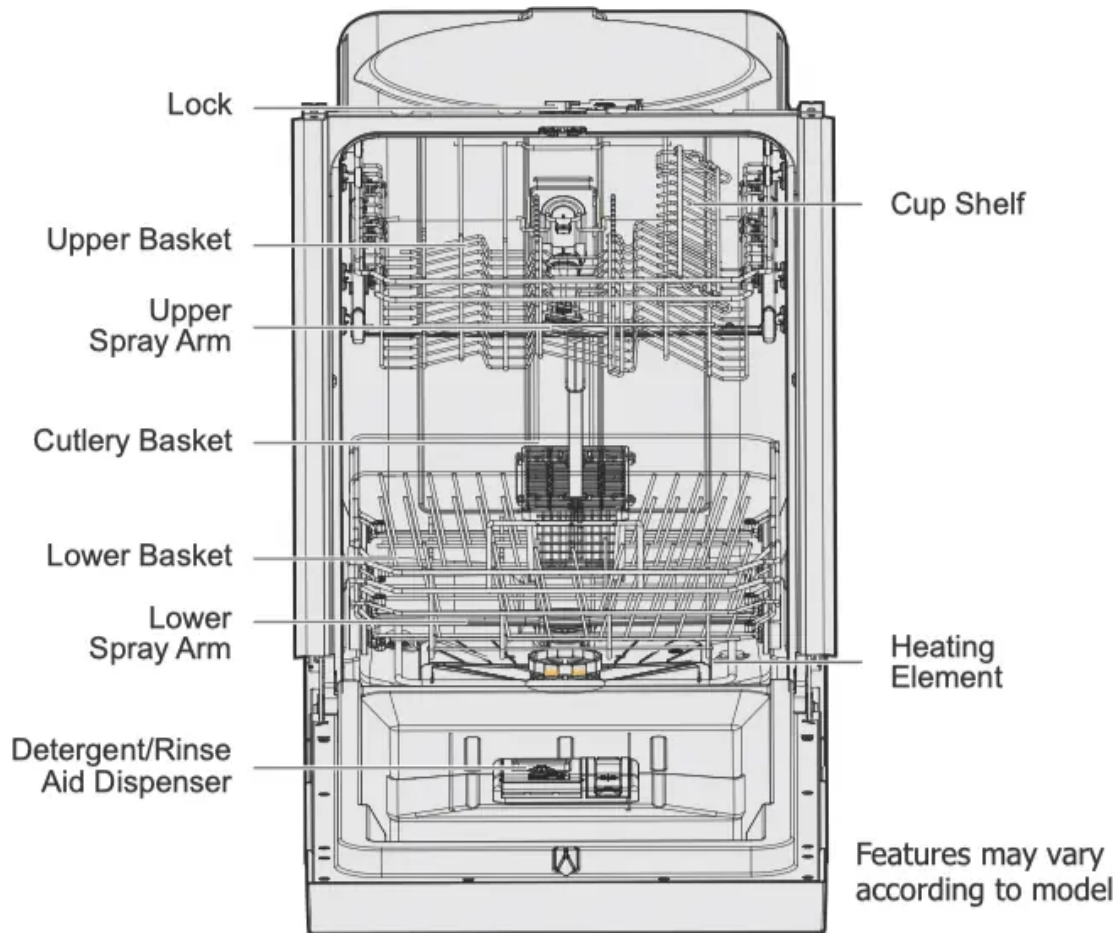


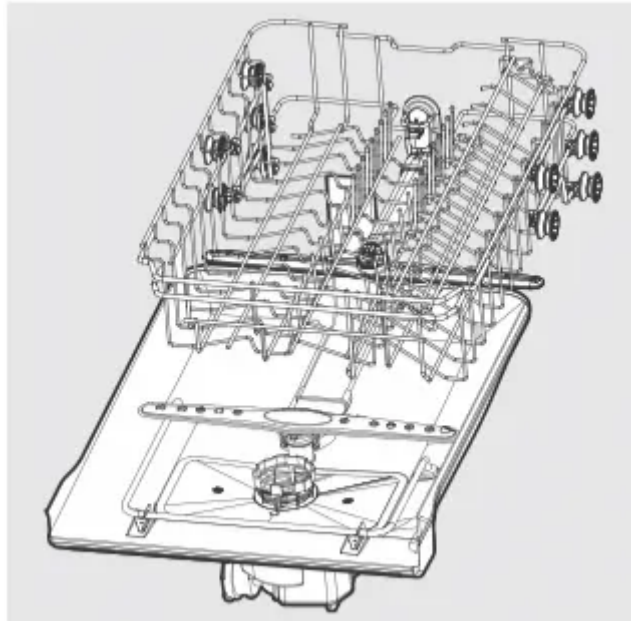
FEATURES AT A GLANCE

Your dishwasher, illustrated below, cleans by spraying a mixture of hot, clean water, and detergent against the soiled surfaces of your dishes and tableware. The dishwasher fills with water covering the filter area. Water is then pumped through the multiple filter and spray arms. Separated soil particles go down the drain as the water is pumped out and replaced with clean water. The number of water fills will vary with the cycle being used.



Smart Wash System

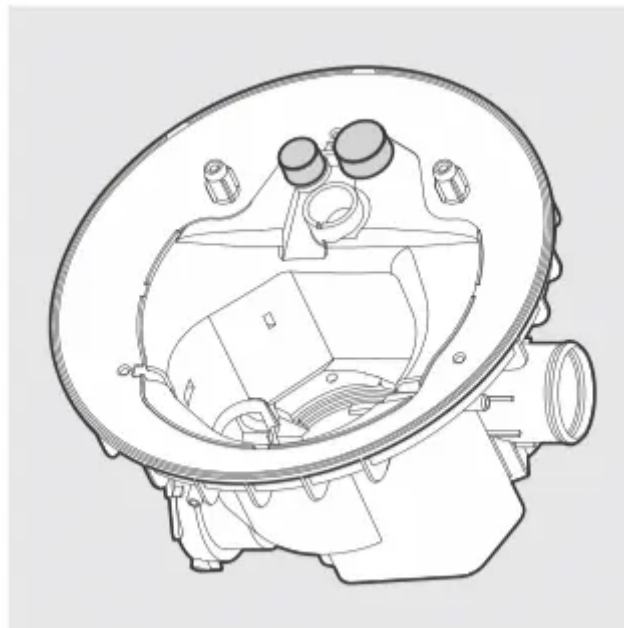
This dishwasher has a Smart Wash System. It can determine the type of cycle required and automatically adjust the cycle to clean the dishes more efficiently. When a partial load of lightly soiled dishes is placed in the unit, a wash cycle similar to a short wash will automatically be performed. When a full load of heavily soiled dishes is placed in the unit, a heavy wash cycle will automatically be performed.



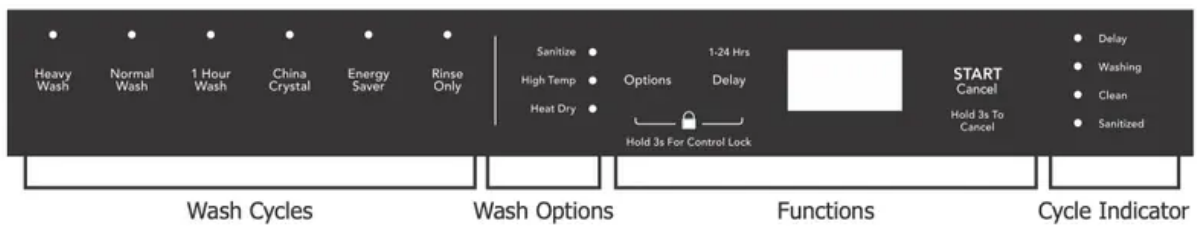
Multiple Filter System

This dishwasher has a multiple Filter System. In the System there are three mesh filters. It can separate soiled water and clean water in different chambers.

The multiple filter system helps to get better performance with less water and less energy.



OPERATING INSTRUCTIONS



Wash Cycle Selections

Cycle times are approximate and will vary with the options selected. Hot water is necessary to activate the detergent and melt fatty food soils. An automatic sensor will check the incoming water temperature. If it is not at the appropriate temperature the timer will delay the cycle to allow automatic water heating during the main wash. When the High Temp wash is selected an even higher temperature will be assured to handle heavier soil loads.

Wash Cycles

Heavy Wash

Recommended for pots, pans, casseroles and dinnerware having light to heavily soiled loads.

Normal Wash

Recommended for lightly to heavily soiled loads.

1 Hour Wash

A shorter wash recommended for lightly soiled loads that do not need drying.

China Crystal

Recommended for lightly soiled China and Crystal.

Energy Saver

Recommended for lightly soiled and pre-rinsed dishes and silverware.

Rinse Only

Recommended for pre-rinsing dishes or glasses. This is only a rinse that keeps food from drying on your dishes and reduces odor buildup in your dishwasher until you are ready to wash a full load. Do not use detergent.

Wash Options

Press the Options button to scroll through the options. The indicator light will illuminate when the option has been selected.

Sanitize

When Sanitize is selected, the temperature of water will be maintained at 156.2°F (69°C) max. The max temperature may not be reached if the incoming water temperature is not correct. Certified residential dishwashers are not intended for licensed food establishments.

WARNING

The Sanitize option is only available with Heavy Wash and Normal Wash cycles.

High Temp

When High Temp is selected, the temperature of the water will be maintained at 140°F (60°C) max.

Heat Dry

When Heat Dry is selected, the heater will work during the drying process.

Functions

START/Cancel

Press START/Cancel to start a wash cycle. Press START/Cancel and hold for 3 seconds to cancel a cycle that is already in progress.

Delay

The Delay option allows you to automatically delay starting your dishwasher from 1-24 hours. To start 1-24 hour delay, press the Delay button until the desired delay time shows in the display window (1h-24h) and press the START/Cancel button. A light will come on indicating the delay start has been activated and will remain on until the cycle starts. To cancel the Delay option and begin the cycle before the delay period is over, press the Start/Cancel button and hold for 3 seconds.

Control Lock

Use to lock all controls and prevent children from accidentally changing the dishwasher cycle or starting the dishwasher. Press and hold both Option and Delay, at the same time, for 3 seconds to lock. After the function is selected the control lock icon will illuminate. Press and hold both Option and Delay again for 3 seconds to unlock.

Display window

This LED screen displays minutes remaining in a running cycle, hours of delay before the unit is set to start, error codes, etc.

- If the machine is in operation, the remaining time (mins) of the selected cycle will be shown in the display window.
- If the Delay option is selected, the number of hours of delay (1h-24h) will be shown in the display window. After the machine starts, the remaining time of the selected cycle will be shown in minutes on the display window.

NOTE

The remaining time could suddenly increase or drop several minutes. This means the Smart Sensor has checked the soil level and adjusted the number of fill cycles.

- If an error occurs which is critical to the machines function and safe operation, the control shall shut down and indicate an error code in the display window. (See Error Codes).

If Error codes are displayed, contact the dealer or qualified service center. They will available to provide assistance in trouble shooting the problem and/or locate and authorized service technician if needed.

Cycle Progress Indicator

The cycle progress indicator lights will illuminate as each stage of the wash cycle is reached.

Delay

When the start of the cycle has been delayed the Delay light will illuminate.

Washing

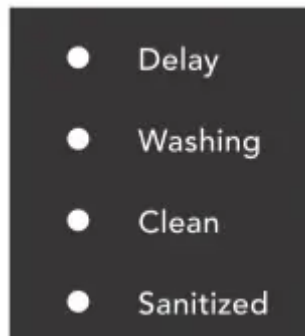
When the dishwasher is washing the load, the Washing light will illuminate.

Clean

After the cycle has ended, the Clean light will illuminate until the dishwasher door has been opened.

Sanitized

When Sanitize is selected, the Sanitized light will illuminate after the cycle has ended.



Cycle Chart

| Cycle | Options available | Water usage | Cycle Time |
|----------------------|----------------------------------|----------------------------------|---------------|
| Heavy Wash | Sanitize, High Temp, or Heat Dry | 5.7 gal. 21.5 liters | 160–165 mins. |
| Normal Wash | Sanitize, High Temp, or Heat Dry | 2.8–5.7 gal. 10.5–21.5 liters | 115–160 mins. |
| Energy Saver | -- | 4.8 gal. 18 liters | 135 mins. |
| China Crystal | Heat Dry | 4.8 gal. 18 liters | 110 mins. |
| 1 Hour Wash | Heat Dry | 3.7 gal. 14 liters | 60–100 mins. |
| Rinse Only | Heat Dry | 2 gal. 7.5 liters | 20–55 mins. |

PREPARING AND LOADING DISHES

Dish Preparation

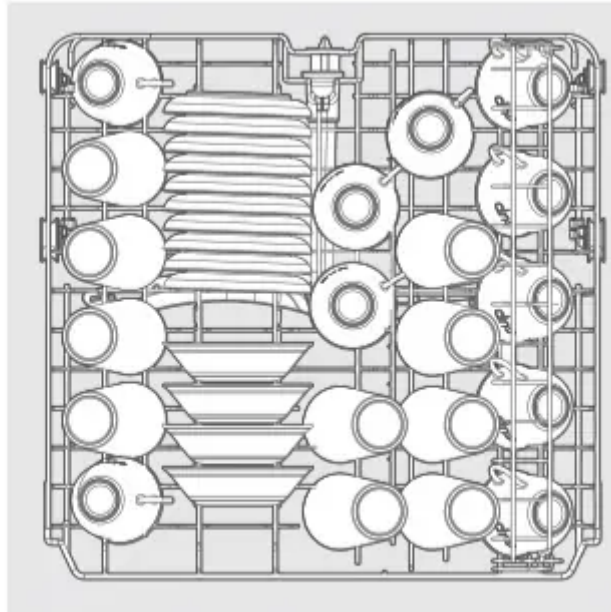
Scrape away large pieces of food, bones, pits, toothpicks, etc. The continuously filtered wash system will remove the remaining food particles. Burned on foods should be loosened before loading. Empty liquids from glasses and cups. Foods such as mustard, mayonnaise, vinegar, lemon juice and tomato based products may cause discoloration of stainless steel and plastics if allowed to sit for a long period of time.

Unless the dishwasher is to be operated at once it is best to rinse off these food soils. If the dishwasher drains into a food disposer, be sure disposer is completely empty before starting dishwasher.



Loading the Upper Basket

Features and appearance of racks and silverware basket as shown may vary from your model.



Standard 10 place setting for upper basket.

The upper basket has been designed for small plates, mugs, glasses, and plastic items marked “dishwasher safe”, etc. For best results, place the bowls, cups, glasses with soiled surface facing down or toward the center. Tilt slightly for better drainage. Load small plates and bowls in two half rows, so that the front of each plate faces the back of the plate in front of it, and the open sides of the plates at the center of the dishwasher face each other.

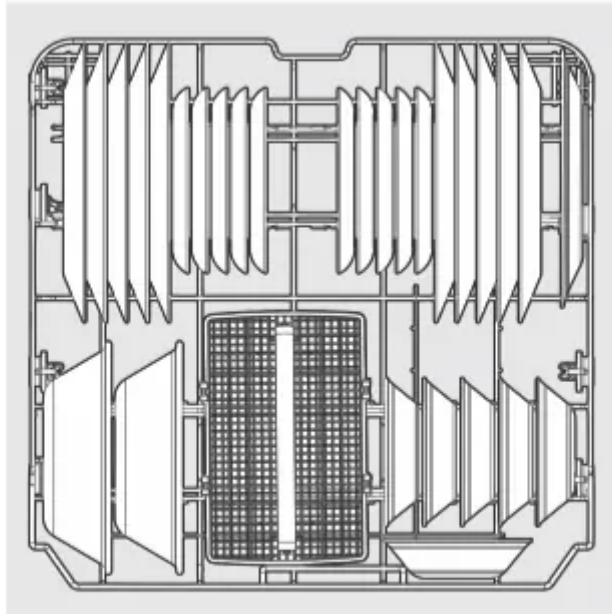
When loading dishes, pull the upper basket out sufficiently so you can load it without striking the counter.

WARNING

Make sure the loaded dishes do not interfere with the rotation of the spray arm located at the bottom of the upper basket. (Check this by rotating the spray arm by hand.)

Loading the Lower Basket

Features and appearance of racks and silverware basket as shown may vary from your model.



Standard 10 place setting for lower basket.

The bottom basket is designed to load plates, soup bowls, plates, saucers and cookware.

- The adjustable basket space will allow you to load items with a maximum height of 11 inches.
- The fold-down tines in the bottom basket make it easy to load those extra large and hard-to-fit items. The tines may be left up for normal use or folded down for more flexible loading. Fold down for more space to load large pots or pans.

Load your plates into the dishwasher in two half rows, so that the front of each plate faces the back of the plate in front of it, and the open sides of the plates at the center of the dishwasher face each other.

Large items should be turned so that the inside faces downward. Load large items such as pans and pots into the dishwasher so their open sides face downwards. We recommend loading cups, stemware, and small plates into the upper basket.

Larger items should be placed along the edge so they do not interfere with the spray arm rotation. Check to ensure that they do not prevent the detergent dispenser from opening.

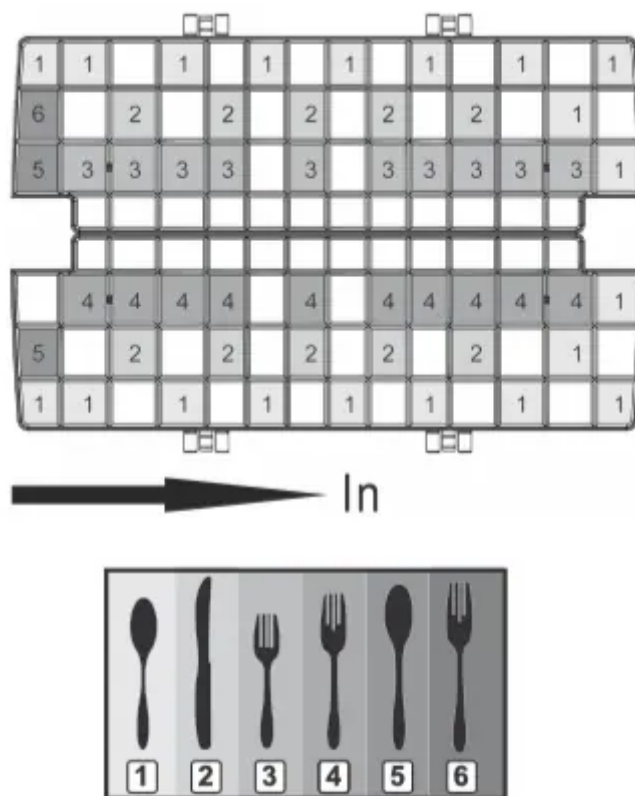
WARNING

Make sure the loaded dishes do not interfere with the rotation of the spray arm located at the bottom of the upper basket. (Check this by rotating the spray arm by hand.)

Loading the Silverware Basket

Features and appearance of racks and silverware basket as shown may vary from your model.

The silverware basket can be divided into three separate modules that can be used in both upper and lower racks.



1. Spoons
2. Knives
3. Salad forks
4. Forks
5. Large spoons
6. Large forks

WARNING

Load sharp items (knives, skewers, etc.) pointing down.

Failure to do so may result in injury.

WARNING

Make sure the loaded items do not interfere with the rotation of the spray arm located at the bottom of the upper basket. (Check this by rotating the spray arm by hand.)

Adding a Dish

To add or remove items after wash cycle starts:

1. Make sure there is a full wash cycle yet to be completed so that any added items are thoroughly washed and rinsed.
2. Open door slightly until wash action stops before completely opening.



3. Add the item.

4. Close door firmly to latch and press the START/Cancel button to resume the wash cycle.

WARNING

TO AVOID BURN INJURY: Slightly open door and wait until spray arms and wash action stop. Hot water may splash out of dishwasher. Failure to do so may result in injury.

DETERGENT AND RINSE AID DISPENSER

The detergent and rinse aid dispenser will automatically release the measured amount of detergent and rinse aid at the appropriate time during the dishwasher cycles.

Rinse aid greatly improves drying and reduces water spots and filming. Without rinse aid your dishes and dishwasher interior will have excessive moisture.

The Heat Dry option will not perform as well without rinse aid. The rinse aid dispenser, located next to the detergent cup, automatically releases a measured amount of rinse aid during the last rinse.

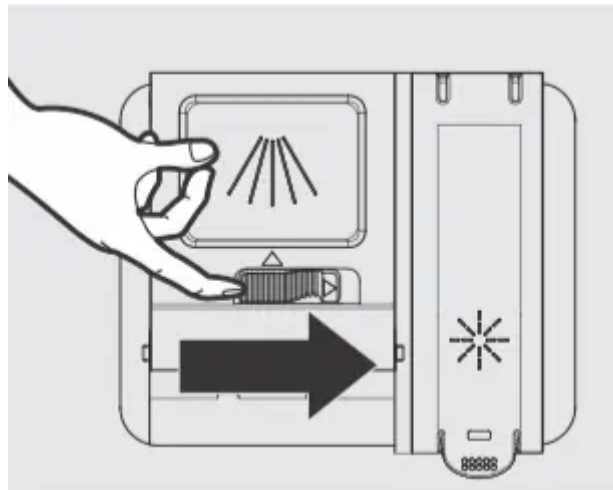
Check the viewing port over rinse aid dispenser to determine if the rinse aid is low. Fill as needed.

NOTE

Your dishwasher is designed to use a liquid rinse aid. The use of rinse greatly improves drying performance after the final rinse. Do not use a solid or bar-type rinse aid. Under normal conditions, the rinse aid will last approximately one month. It is best to keep it full, but do not over fill.

Filling the Detergent Dispenser

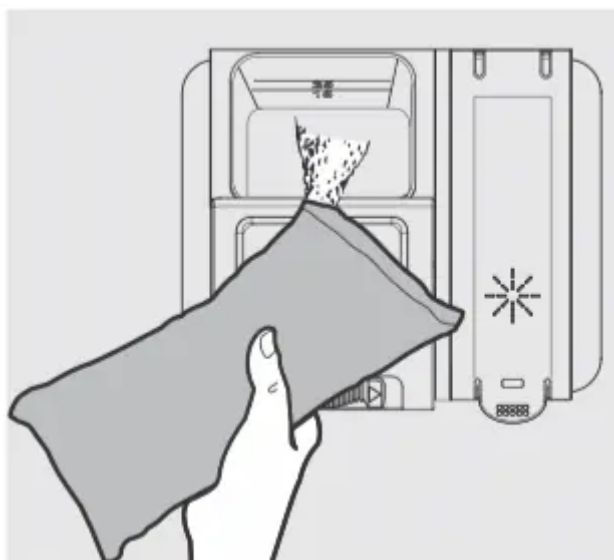
1. Push the dispenser cover release catch to open the main wash detergent compartment.



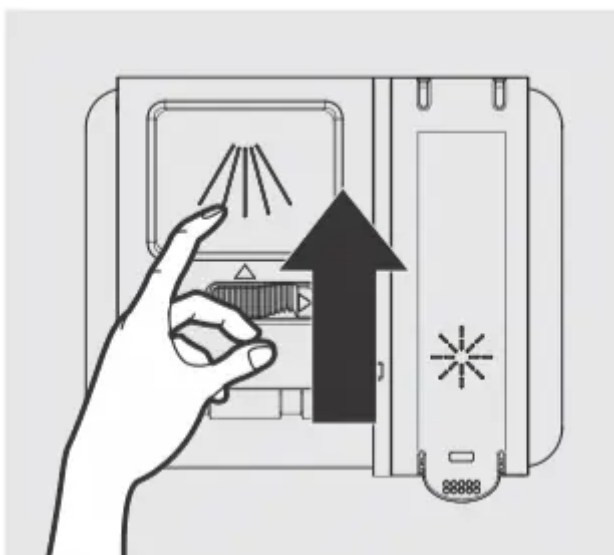
NOTE

The flap is always open at the end of a dishwashing cycle.

2. Add the recommended amount of detergent to the detergent compartment.



3. Press down on the top of the cover to secure.



Filling the Rinse Aid Dispenser

Rinse aid improves the drying performance of the dishwasher.

This dishwasher has been designed to use liquid rinse aid only. Using a powdered rinse aid will clog the reservoir opening and cause the dishwasher to malfunction.

WARNING

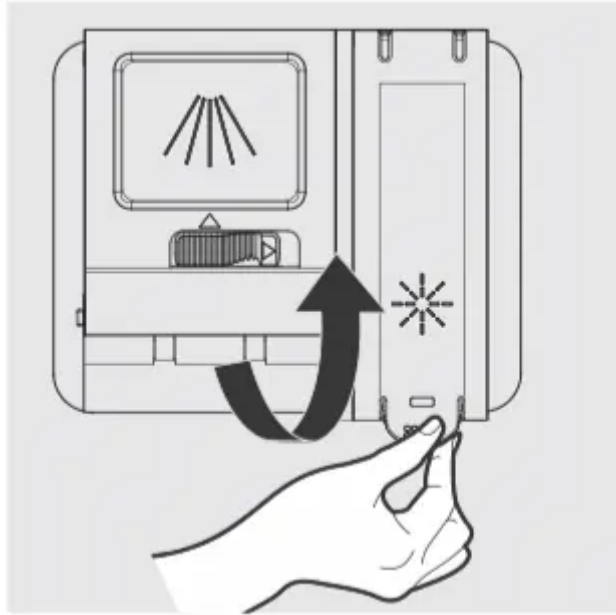
- DO NOT add regular detergent to the rinse aid dispenser.
- DO NOT use powdered rinse aid in the rinse aid dispenser.

NOTE

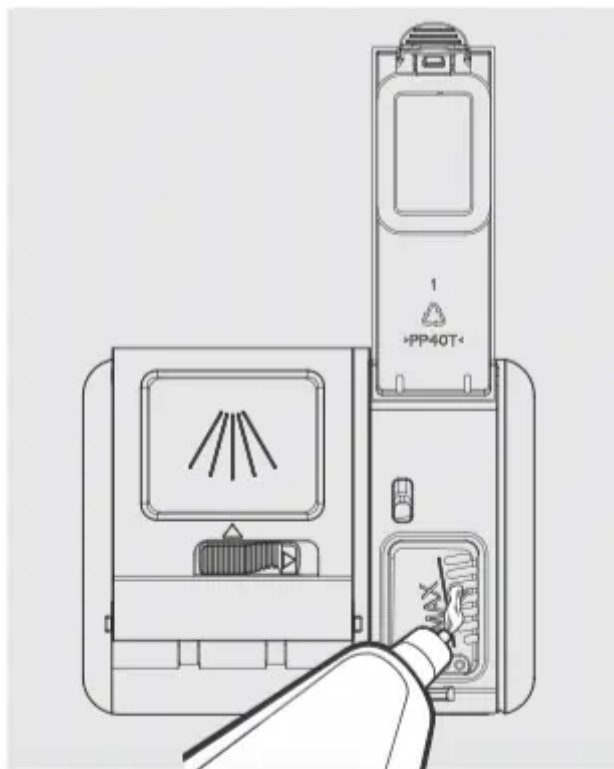
Visually check viewing port to determine if rinse aid is low. Fill as needed.

To refill the rinse aid dispenser:

1. Lift up the end tab of rinse aid cover to open.



2. Fill the rinse aid dispenser with liquid rinse aid until full. DO NOT overfill.



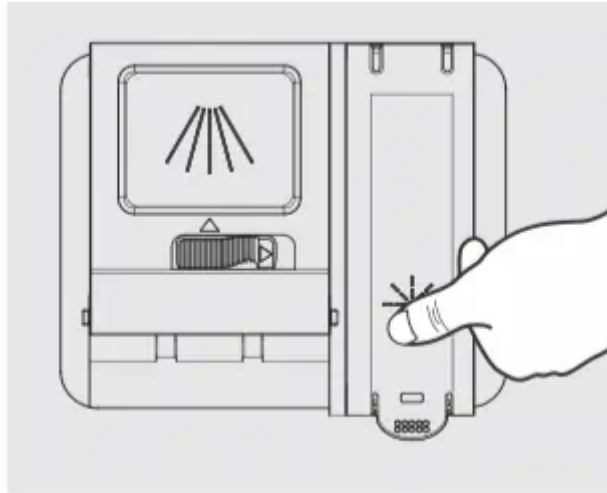
NOTE

Use the viewing port when filling the rinse aid reservoir.

WARNING

Do not fill the reservoir above the full level indicator. Excess rinse aid can overflow during the wash cycle.

3. Press the rinse aid cover down firmly to close.



CARE AND CLEANING

Cleaning the Dishwasher

Keeping your dishwasher clean improves its performance, reduces unnecessary repairs, and lengthens its life.

Cleaning the Exterior

It's best to clean spills on the outside of your dishwasher as they occur. Use a soft, damp cloth on the control panel to gently wipe away spills and dust. Do not use benzene, wax, thinner, chlorine bleach, or alcohol. These materials may discolor the inner walls and cause stains. Do not clean the dishwasher by sprinkling water over it and avoid letting water come into contact with any of the electrical parts.

NOTE

If your dishwasher has a stainless steel door panel, you can clean it with a stainless steel cleaner for Home Appliances or a similar product using a clean, soft cloth.

Cleaning the Interior

WARNING BURN HAZARD

Allow heating element to cool before cleaning the interior. Failure to do so can result in burns.

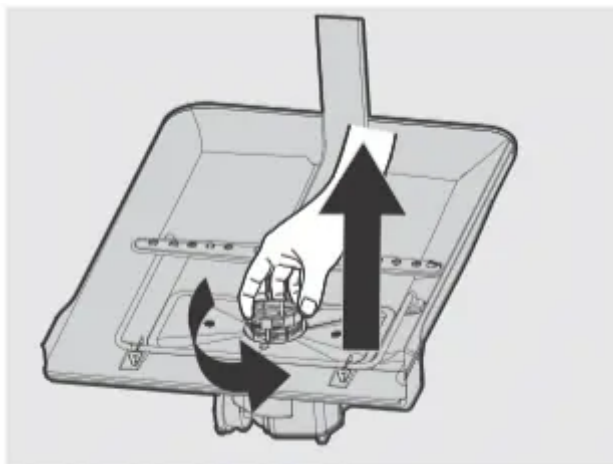
Clean the interior of your dishwasher periodically to remove any dirt or food particles. Wipe the inside of the dishwasher and the inner part of the door with a wet dishcloth. We recommend filling the detergent dispenser with dish detergent, and then running the dishwasher empty periodically using either the Normal or Express 60 cycle with the sanitize option. This will keep your dishwasher clean.

If white spots and odor are still present in your dishwasher, run the Normal cycle with the dishwasher empty and without detergent until it flushes. Then, interrupt the cycle and put an 8 ounce cup of white vinegar into the lower basket. Close the dishwasher and let the cycle finish.

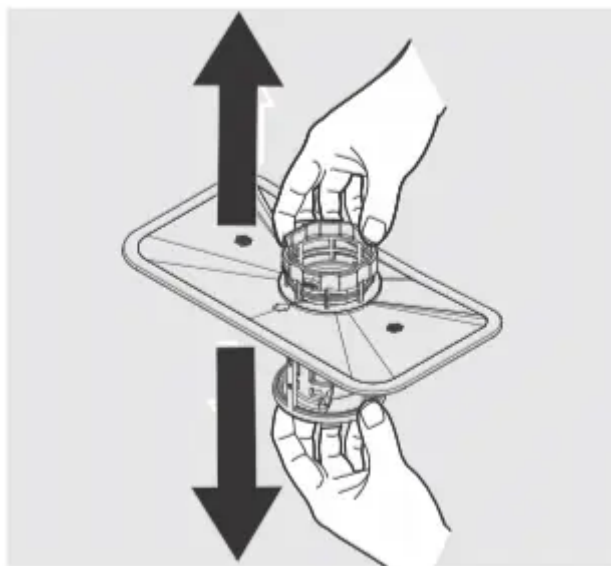
WARNING

Do not remove the tub front seal (the long rubber seal enclosing the opening of the dishwasher).

1. Turn off the dishwasher.

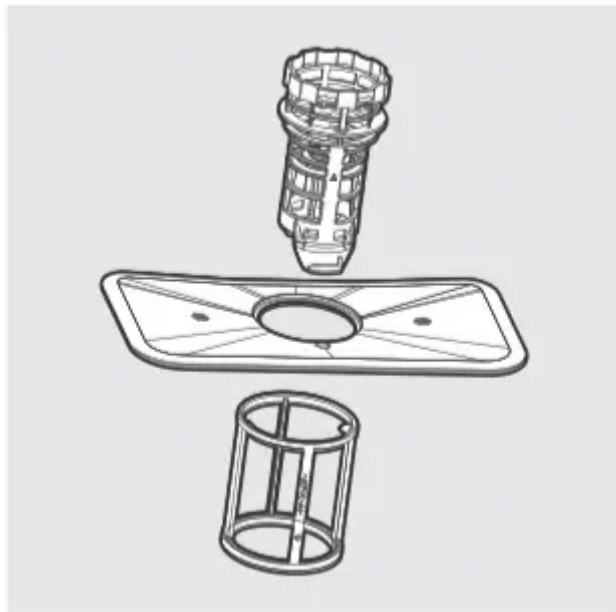


2. Rotate the filter insert counterclockwise to unfasten and then detach the filter insert.

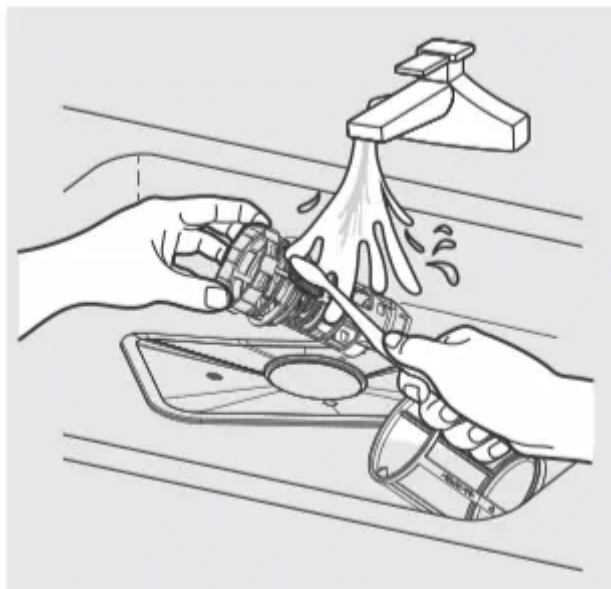


3. Remove the fine filter (flat, rectangular).

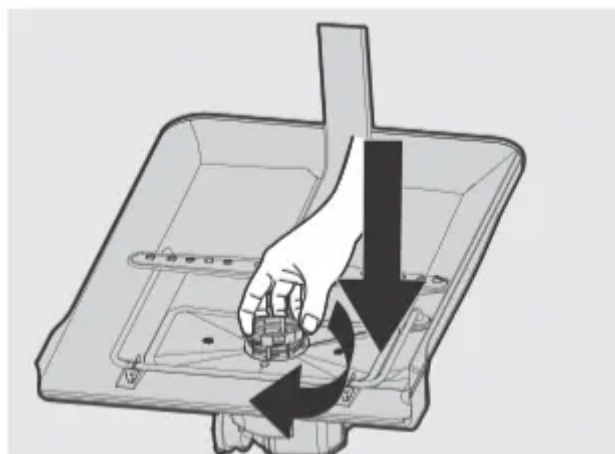




4. Remove any dirt or other remains from the filters, and then rinse them under running water.



5. Reassemble the filters in the reverse order of the disassembly, replace the filter insert, and rotate clockwise to the close arrow.



CAUTION

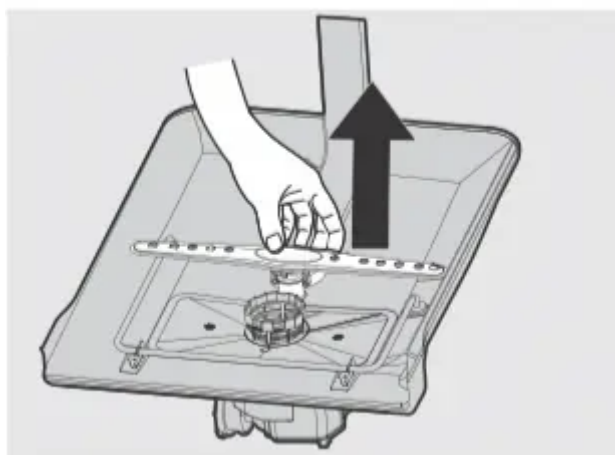
If the filter insert is not closed properly, its performance will be decreased.

Cleaning the Lower Spray Arm

If your dishwasher does not seem to be cleaning adequately or the spray arm nozzles seem clogged, the lower spray arm can be removed and cleaned. Remove spray arm carefully to avoid damage.

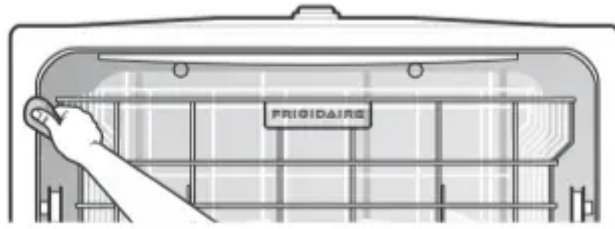
Remove lower spray arm

1. Check whether the nozzle holes are clogged by food particles.
2. If cleaning is needed, remove the spray arm by pulling it upwards.
3. Clean the nozzles, and then push the spray arm back into place.
4. Rotate the spray arm to check that it is properly in place.



Cleaning the Door Gasket

If the dishwasher door is not closing properly or if water is leaking from the door during the cycle, check that door gasket is clear of debris. If needed, clean the door gasket with a damp cloth to remove food particles and ensure a tight seal.



BEFORE YOU CALL

Before calling for service, review this list. It may save you both time and expense. This list includes common experiences that are not the result of defective workmanship or material in your dishwasher.

| PROBLEM | POSSIBLE CAUSES | SOLUTIONS |
|---|---|---|
| Dishwasher won't start | <ul style="list-style-type: none"> • Dishwasher won't start. • Power supply or power line is not connected. • Delay option has been selected. • Control Lock activated (select models). | <ul style="list-style-type: none"> • Shut the door completely make sure it is latched. • Check and connect the power supply. • Refer to Delay section in this manual to reset. • Deactivate the Control Lock, refer to Control Lock section in this manual. |
| Dishwasher beeps at the end of the cycle | <ul style="list-style-type: none"> • The wash cycle will beep to indicate the end of the cycle. | |
| Dishwasher operates too long | <ul style="list-style-type: none"> • The dishwasher is connected to cold water. • The cycle time will vary due to the soil. • The sanitize option is selected. | <ul style="list-style-type: none"> • Check the dishwasher, make sure it is properly connected to the hot water supply. • When heavy soil is detected, some cycles will automatically increase the cycle time. • When sanitize option is selected, the cycle time will be increase to meet the sanitized temperature request. |
| Dishes are not clean enough | <ul style="list-style-type: none"> • Water pressure is temporarily low. • The inlet water temperature is low. • Dishes are loaded too close together. • Improper use of detergent. • The selected cycle is not suitable for food soil condition. | <ul style="list-style-type: none"> • Use you dishwasher when the water pressure is normal. • Make sure the dishwasher is connected to the hot water supply Try not use your dishwasher when hot water is being used elsewhere in the house. • Load the dishes again as per the manual. • Add detergent depending on the water hardness and the cycle you chose. Use fresh detergent. • Choose anther cycle for longer washing time. • Make sure the spay arm is rotated freely. |



| | | |
|--|--|---|
| | <ul style="list-style-type: none"> • Spray arms is blocked by some items. | |
| <p>Dishes not dry enough</p> | <ul style="list-style-type: none"> • Rinse aid dispenser is empty. • Improper loading of dishes. • The cycle you chose did not included the drying. | <ul style="list-style-type: none"> • Fill rinse aid dispenser or increase the amount of rinse aid. • Load the dishes again as the manual instructs. • Choose the proper cycle with drying. |
| <p>Spots and film on dishes</p> | <ul style="list-style-type: none"> • Water hardness is too high. • Improper loading of dishes. • Old rinse aid is used. • Rinse dispenser empty. | <ul style="list-style-type: none"> • For extremely hard water install a water softener. • Load the dishes again as the manual indicates. • Use fresh rinse aid. • Add rinse aid to the dispenser. |



| | | |
|---|--|---|
| Etching. | <ul style="list-style-type: none"> • Using too much detergent. • The inlet water temperature exceeds 158°F (70°C). | <ul style="list-style-type: none"> • Use less detergent if you have soft water. • Lower the inlet water temperature. |
| Detergent left in dispenser cup | <ul style="list-style-type: none"> • Detergent may be too old. • Spray arm is blocked. | <ul style="list-style-type: none"> • Use fresh detergent. • Load the dishes, making sure the spray arms are not blocked. |
| Detergent dispenser will not shut | <ul style="list-style-type: none"> • Improper operation of the detergent cover. | <ul style="list-style-type: none"> • Add the detergent and rinse aid as indicated by the manual. |
| Water remains in the dishwasher | <ul style="list-style-type: none"> • Previous cycle has not finished or has been interrupted. | <ul style="list-style-type: none"> • Select the proper cycle explained in the manual. |
| Dishwasher does not drain properly | <ul style="list-style-type: none"> • Drain is clogged. • Drain hose is kinked. | <ul style="list-style-type: none"> • Check the air gap if you have one. Make sure the disposer is empty if dishwasher is connected to disposer. • Make sure the drain hose is properly connected to the sink. |
| Suds in the tub | <ul style="list-style-type: none"> • Improper detergent is used. | <ul style="list-style-type: none"> • Make sure to use only the automatic dishwasher detergent. |
| Dishwasher leaks | <ul style="list-style-type: none"> • Excessive suds caused by using the improper detergent. • Dishwasher is not level. | <ul style="list-style-type: none"> • Make sure to use only the proper dishwasher detergent. • Level the dishwasher. |
| Black or gray marks on dishes | <ul style="list-style-type: none"> • Aluminum utensils have rubbed against dishes. | <ul style="list-style-type: none"> • Rearrange the dishes. |
| Stained tub interior | <ul style="list-style-type: none"> • Coffee and tea soil. • Reddish stain. | <ul style="list-style-type: none"> • Using an approved spot cleaner to remove the soil. • Some tomato-based foods will cause this, use of the rinse only cycle right |

| | | |
|---|---|--|
| | | after loading this will decrease the staining. |
| Noises | <ul style="list-style-type: none"> • Detergent cup opening\ Drain pump sound. • A hard object has entered the wash module. When the object is ground up, the sound should stop. | <ul style="list-style-type: none"> • This is normal. • If the noise persists after a complete cycle, call for service. |
| Dishwasher won't fill with water | <ul style="list-style-type: none"> • Water valve is turn off. • Door latch may not be properly seated. | <ul style="list-style-type: none"> • Check if the water valve is turn on. • Make sure the door is closed. |

Error Codes

Error codes will display on the display window when the following errors occur:

| Code | Meaning | Possible Causes |
|-----------|-------------------|---|
| i1 | Longer inlet time | Faucets is not opened, or water intake is restricted, or water pressure is too low. |
| i4 | Unit leaking | Some element of dishwasher leaks. |

WARNING

- If overflow occurs, turn off the main water supply before calling a service provider.
- If there is water in the base pan because of an overflow or small leak, the water should be removed before restarting the dishwasher.

Warning

This content is compiled from multiple sources and is provided for reference purposes only. It may not be complete or fully applicable to all situations. If you are unable to resolve your issue, please contact the product manufacturer or an authorized service provider for official support.

