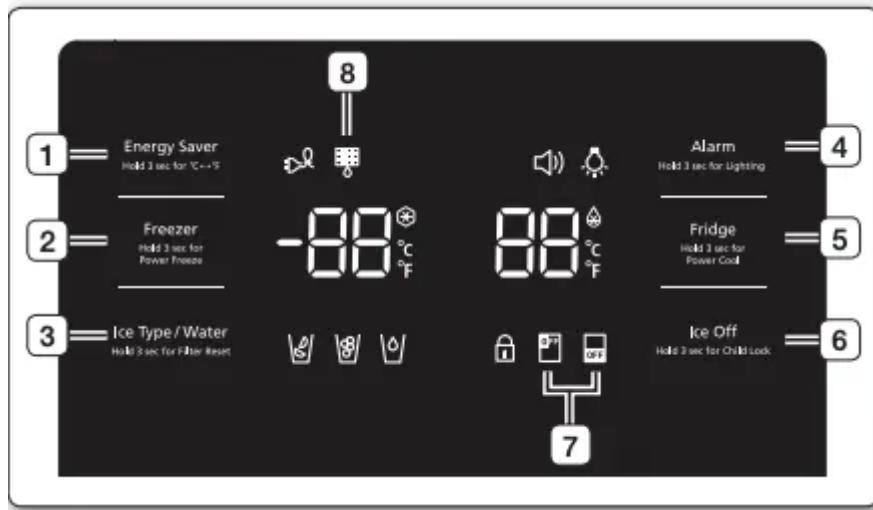


## Operating your French Door Refrigerator

### USING THE CONTROL PANEL



#### ( 1 ) Energy Saver Hold 3 sec for °C ↔ °F

Touching this button turns Energy Saver mode on and off. When you turn Energy Saver on, the Energy Saver icon lights. Turn Energy Saver off and the icon goes off. The Energy Saver function automatically turns on when power is supplied to the refrigerator. If condensation or water drops appear on the doors, turn the Energy Saver mode off.

Touch and hold this button for 3 seconds to switch the temperature units between °C and °F.

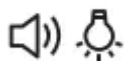
#### ( 2 ) Freezer (Hold 3 sec for Power Freeze)

Touch this button to set the freezer to your desired temperature. You can set the temperature between -8 °F and 5 °F (between -23 °C and -15 °C). Touch and hold this button for 3 seconds to decrease the time needed to freeze products in the Freezer. It can be helpful if you need to quickly freeze easily spoiled items or if the temperature in the freezer has warmed dramatically (For example, if the door was left open).

#### ( 3 ) Ice Type/Water Hold 3 sec for Filter Reset

Touch this button to select the ice or water function. You can select water or the types of ice (cubed/ crushed ice). Each time you press the button, the cubed and crushed ice modes alternate and the Cubed or Crushed ice icon lights up, indicating your selection. After you replace the water filter, touch and hold this button for 3 seconds to reset the water filter life indicator.





#### ( 4 ) Alarm Hold 3 sec for Lighting

To turn the door open alarm on and off If the door alarm is set to On, an alarm beeps if any refrigerator door is left open for more than three minutes. The beeping stops when you close the door. The door alarm function is preset to On int the factory You can turn it off by touching and then releasing this button. You can turn it back on in the same fashion. The icon lights up when the function is on. If you touch and hold the Alarm/Lighting button for 3 seconds, the dispenser LED Lamp will stay on. To turn off the light press the button for 3 seconds again.



#### ( 5 ) Fridge Hold 3 sec for Power Cool

Touch this button to set the fridge to your desired temperature. You can set the temperature between 34 °F and 44 °F (between 1 °C and 7 °C ). Touch and hold this button for 3 seconds to decrease the time needed to cool products in the Refrigerator. It can be helpful if you need to quickly cool easily spoiled items or if the temperature in the fridge has warmed dramatically (For example, if the door was left open).



#### ( 6 ) Ice Off Hold 3 sec for Child Lock

If you don't want to make more ice, touch the Ice Off button. Touching this button for 3 seconds turns on Child Lock which locks the display panel and dispenser buttons so the buttons can not be used. The Child Lock icon lights up to indicate you've activated the Child Lock function. Press 3 seconds to unlock. The Child Lock are not going to lock the Cool Pantry. The lights and motors start until the refrigerator turns off again.



(RF263T\*\*)

#### ( 7 ) Ice Off


If you don't want to make more ice, touch the Ice Off button. The icon will light up and the Ice-Maker stops making ice.



We recommend you to stop ice making if the following occur:

- There is enough ice in the ice bucket.
- You want to save water and energy.
- Water is not being supplied to the refrigerator.




If the ice maker function is ON, and the water Line is not connected, there will be a water valve noise from the back of the unit, press the Ice Off (Hold 3sec for child lock) button for less than 3 seconds until the Ice Off Indicator () illuminates.

## ( 8 ) Filter

### Water filter usage

This icon will light up when you need to change the filter. After you use about 300 gallons of water, the filter indicator lights up. (about 6 months). The icon will blink red for several seconds when you open or close the door. After you install the new water filter, reset the filter indicator by touching the Ice Type/Water Hold 3 sec for Filter Reset button.

-  If water is not dispensing or dispensing slowly, you need to replace the water filter because the water filter is clogged.
- Some areas have large amounts of lime in their water, which causes the water filter to clog more quickly.

### Cooling Off Mode

Cooling Off mode (also called Shop mode), is designed for use by retailers when they are displaying refrigerators on the shop floor. In Cooling Off mode, the refrigerator's fan motor and lights work normally, but the compressor does not run, and the refrigerator and freezer do not get cold. To start Cooling Off mode, touch and hold the Energy Saver button and the Freezer button for 5 seconds during normal operation. The refrigerator chime sounds and the temperature display flashes OF OF. To cancel Cooling Off mode, touch and hold the Energy Saver and the Freezer buttons again for 5 seconds.

## CHANGING THE WATER FILTER

**WARNING** To reduce risk of water damage to your property DO NOT use generic brands of water filters in your SAMSUNG Refrigerator

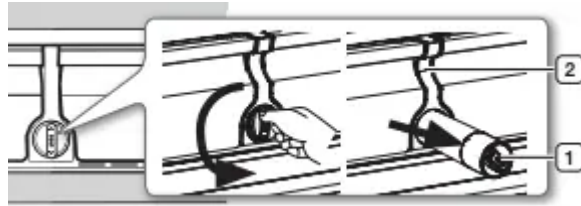
USE ONLY SAMSUNG BRAND WATER FILTERS. SAMSUNG will not be legally responsible for any damage, including, but not limited to property damage caused by water leakage from the use of a generic water filter. SAMSUNG Refrigerators are designed to work ONLY WITH SAMSUNG Water Filter.


The Filter light turns red to let you know when it is time to change your water filter cartridge. To give you time to get a new filter, the red light comes on just before the capacity of the current filter runs out.

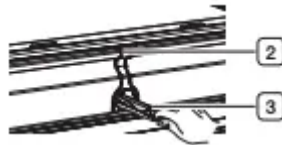


Changing the filter on time provides you with the freshest, cleanest water from your refrigerator.

1. Shut off the water supply. Then, turn the water filter ( 1 ) about 1/4 turn, counter-clockwise.
2. Pull the water filter ( 1 ) from the case filter ( 2 ).




-  To change the water filter more easily, shut off the water supply valve.

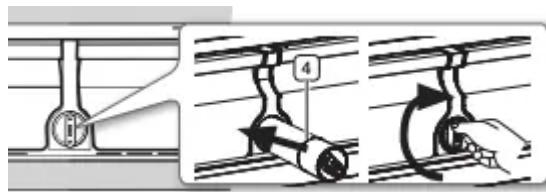


- Sometimes, it is hard to disassemble the water filter because impurities in the water cause it to stick. If you are having difficulties, grip the water filter firmly and pull it hard.
- When you pull the water filter, a little water can leak from the opening. This is normal. To minimize the water leaks, keep the filter cartridge horizontal when you pull it.
- To prevent overflow, empty the water filter tray and dry around the filter case ( 2 ).


3. Insert the new filter into the filter case ( 4 ).
4. Push the filter, and then turn it clockwise until it locks.

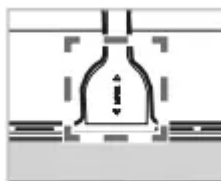
-  If you have trouble inserting the water filter because of high water pressure, shut off the water supply valve.

- The locked symbol should be lined up with the indicator line.



5. Touch and “Ice Type/ Water Hold 3 sec for Filter Reset” button (    ) (Filter Reset)

) for about 3 seconds to reset the water filter. The color of the indicator (  ) changes from red to light off.

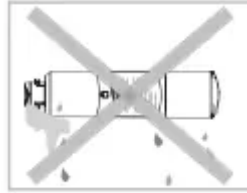


6. If you turned off the water supply, turn it back on.

- For a replacement water filter, you can visit your local home Improvement center or contact the Samsung Parts distributor.
- Be sure the replacement water filter has the SAMSUNG logo on the box and on the water filter.

### **Removing any residual matter inside the water supply line after installing the water filter.**

1. Turn ON the main water supply and supply water to the refrigerator.



2. Select water in the button “ICE TYPE/ WATER”, pour 1 Gal (6-7 minutes) to clean the water supplier system and it will take the air out from the lines.

3. If after pour 1 Gal the water doesn't turn clear is possible an additional flushing in the household lines.

4. Open the Refrigerator door and make sure there are no water leaks coming from the water filter.



• Be sure to flush the dispenser system thoroughly, otherwise water may drip from the dispenser.

• This means that there is still air in the line.

### **Reverse Osmosis Water Supply**

#### **IMPORTANT :**

The pressure of the water supply coming out of a reverse osmosis system going to the water inlet valve of the refrigerator needs to be between 35 and 120 psi (241 and 827 kPa). If a reverse osmosis water filtration system is connected to your cold water supply, the water pressure to the reverse osmosis system needs to be a minimum of 40 to 60 psi (276 to 414 kPa.) If the water pressure to the reverse osmosis system is less than 40 to 60 psi (276 to 414 kPa):

- Check to see whether the sediment filter in the reverse osmosis system is blocked. Replace the filter if necessary.
- Allow the storage tank on the reverse osmosis system to refill after heavy usage.
- If your refrigerator has a water filter, it may further reduce the water pressure when used in conjunction with a reverse osmosis system. Remove the water filter.

If you have questions about your water pressure, call a licensed, qualified plumber.

## CONTROLLING THE TEMPERATURE

### Basic temperature of Freezer and Refrigerator Compartments

The basic temperature and recommended temperatures of the Freezer and Refrigerator Compartments are 0 °F and 37 °F(or -18 °C and 3 °C) respectively. If the temperature of the Freezer and Refrigerator Compartments are too high or low, adjust the temperature manually

### Controlling the Freezer temperature



**Recommend Temp (Freezer) : 0 °F (or -18 °C )**

The Freezer temperature can be set between -8 °F and 5 °F (or between -23 °C and -15 °C) to suit your particular needs. Press the Freezer button repeatedly until the desired temperature is shown in the temperature display. The temperature will change by 1 °F (or 1 °C) with each press. See below

Fahrenheit : 0 °F → -1 °F → -2 °F → -3 °F → -4 °F → -5 °F → -6 °F → -7 °F → -8 °F → 5 °F → 4 °F → 3 °F → 2 °F → 1 °F → 0 °F.

Centigrade : -18 °C → -19 °C → -20 °C → -21 °C → -22 °C → -23 °C → -15 °C → -16 °C → -17 °C → -18 °C.

Keep in mind that foods such as ice cream may melt at 4 °F (or -15.5 °C). The temperature display will move sequentially from -8 °F to 5 °F (or from -23 °C to -15 °C).

### Controlling the fridge temperature

The fridge temperature can be set between 34 °F and 44 °F (or between 1 °C and 7 °C) to suit your particular needs. Press the Fridge button repeatedly until the desired temperature is shown in the temperature display. The temperature will change by 1 °F (or 1 °C) with each press. See below.

Fahrenheit : 37 °F → 36 °F → 35 °F → 34 °F → 44 °F → 43 °F → 42 °F → 41 °F → 40 °F → 39 °F → 38 °F → 37 °F.

Centigrade : 3 °C → 2 °C → 1 °C → 7 °C → 6 °C → 5 °C → 4 °C → 3 °C

The temperature control process for the Fridge works just like the Freezer process. Press the Fridge button to set your desired temperature. After a few seconds, the Fridge will begin adjusting towards the newly set temperature. This will be reflected in the digital display.



**Recommend Temp (Fridge) : 37 °F (or 3 °C )**



- The temperature of the Freezer, Fridge or Cool Select Pantry Zone may rise when you open the doors too frequently, or if a large amount of warm or hot food is placed inside.

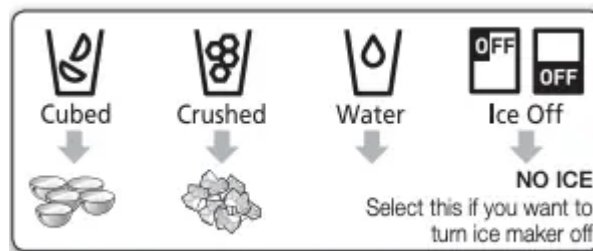
- This may cause the digital display to blink. Once the Freezer and Fridge temperature return to their normal set temperatures, the blinking will stop.

- If the blinking continues, you may need to “reset” the Refrigerator. Try unplugging the appliance, wait for around 10 minutes and then plug the power cord back in.

- If there is a communication error between the Display and Main Controller, the Convertible Display light may blink. If the blinking continues for a long period of time, please contact a Samsung Electronics Service Center.

## USING THE COLD WATER DISPENSER

Push the appropriate ice type button to select what you want dispensed.



## Using the ice Dispenser

Place a glass underneath the ice dispenser and push gently against the dispenser lever with your glass. Make sure the glass is in line with the dispenser to prevent the ice from bouncing out.



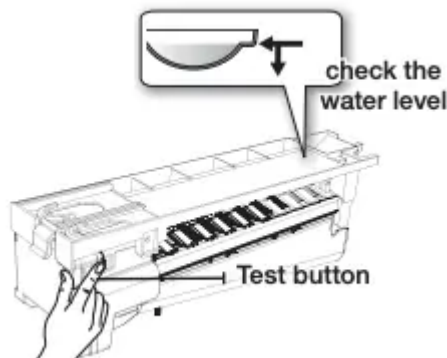
**CAUTION** Please wait 2 seconds before removing the glass under the dispenser to prevent spills. If the Refrigerator door opens, the Dispenser does not work.



**CAUTION** When Cubed Ice is selected after using the Crushed Ice mode, a small amount of residual crushed ice might be produced.



**CAUTION** Do not pull the lever out. You could damage or break the lever's spring.

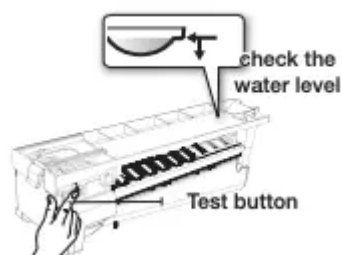


### Maintaining the Ice Bucket

- To clean the ice bin/bucket, wash with a mild detergent, rinse well, and dry thoroughly it. Do not use harsh or abrasive cleaners or solvents.
- The ice cubes generated by the rapid ice making process will look white, which indicates they are generated normally.
- As the ice maker in the refrigerator room makes ice cubes even faster, move the ice cubes from the refrigerator ice bin to the freezer ice bin if you need more ice cubes.
- If ice doesn't come out, pull out the ice bucket and press the test button located on the right side of ice maker.
- Do not press the test button continuously when the tray is filled with ice or water. Water may overflow or ice may jam the bucket.
- Normal Use

To fill the ice bucket to maximum capacity after installation, follow these steps:

Water may overflow or ice may jam the bucket.



**WARNING** To remove the ice cubes without use the Ice Bucket, turn off the ice maker. (Remove the front cover of the Ice Maker) Ice cubes in the ice machine may leak on the drawer.



**WARNING** Not put food into the tray of ice. de hielo. If you store food in the ice bucket, may hinder the ice maker to open or close the door, and damage the ice maker.



**WARNING** Note that the ice cubes from the ice bucket can spill over the box to remove the tray from the drawer. In this case, you must remove the drawer the ice cubes that have been spilled.



**WARNING** In case of power outage, ice cubes can melt and then freeze when power returns, causing the dispenser to stop working.

To prevent this from happening after a power outage, remove the ice bucket and discard the ice and wastewater.



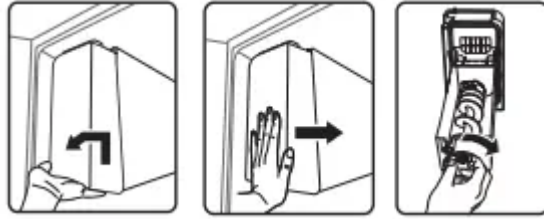
- If you use all the ice at one time, repeat Steps 2 and 3 on the previous page.

- However, wait only 8 hours before removing the first 4 to 6 cubes. This procedure will replace ice cubes and ensure their maximum output.



- The first ice should be discarded as they may have bad taste.

### How to Use Ice Off function



When you select the Off Ice (hielodesactivado), remove all ice cube tray. If not using the ice dispenser, it is possible to stack the cubes. Remove the tank in the direction of the arrow. Dispose of ice cubes or ice mass. Push the bottom of the tray until it clicks. If the tray does not fit, turn the propeller 90 degrees and try again



**WARNING** Use only the ice maker refrigerator. Only a suitably qualified person must install / connect the water supply to the refrigerator. Connect only to a potable water supply.

In order that the ice maker work properly, need a water pressure of 20 ~ 125 psi (138 ~ 862 kPa). Whether traveling for vacation or business and will not use water dispensers and ice for an extended period:

- Close the stopcock. If not, can result in water leakage.
- Remove all food.
- Unplug the refrigerator.
- Remove excess moisture from inside the refrigerator and leave doors open. Otherwise, odor and mold may occur. Do not put fingers, hands or any other inappropriate object in the container or bucket of ice maker. It may cause personal injury or property damage.
- Never put fingers or objects into the dispenser opening. Can cause injury. Never try to take the ice maker.
- Do not wipe or spray the ice tray with water while in the refrigerator. Remove for cleaning.



**WARNING** When inserting the tray of the ice maker, make sure it is well centrada. De Otherwise, you could lock.

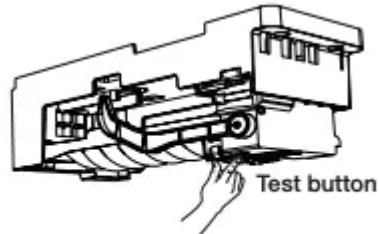
### The phenomenon of turbidity



- The water entering the cooler circulates through the main filter is a filter for alkaline water. In the filtering process, the pressure of the water leaving the filter increases, and the water is saturated with oxygen and nitrogen. When it is contacted with air, the pressure drops rapidly and the oxygen and nitrogen is oversaturated and generate gas bubbles.
- Temporarily, water can have a cloudy appearance due to these bubbles of oxygen. After a few seconds, water is colorless.



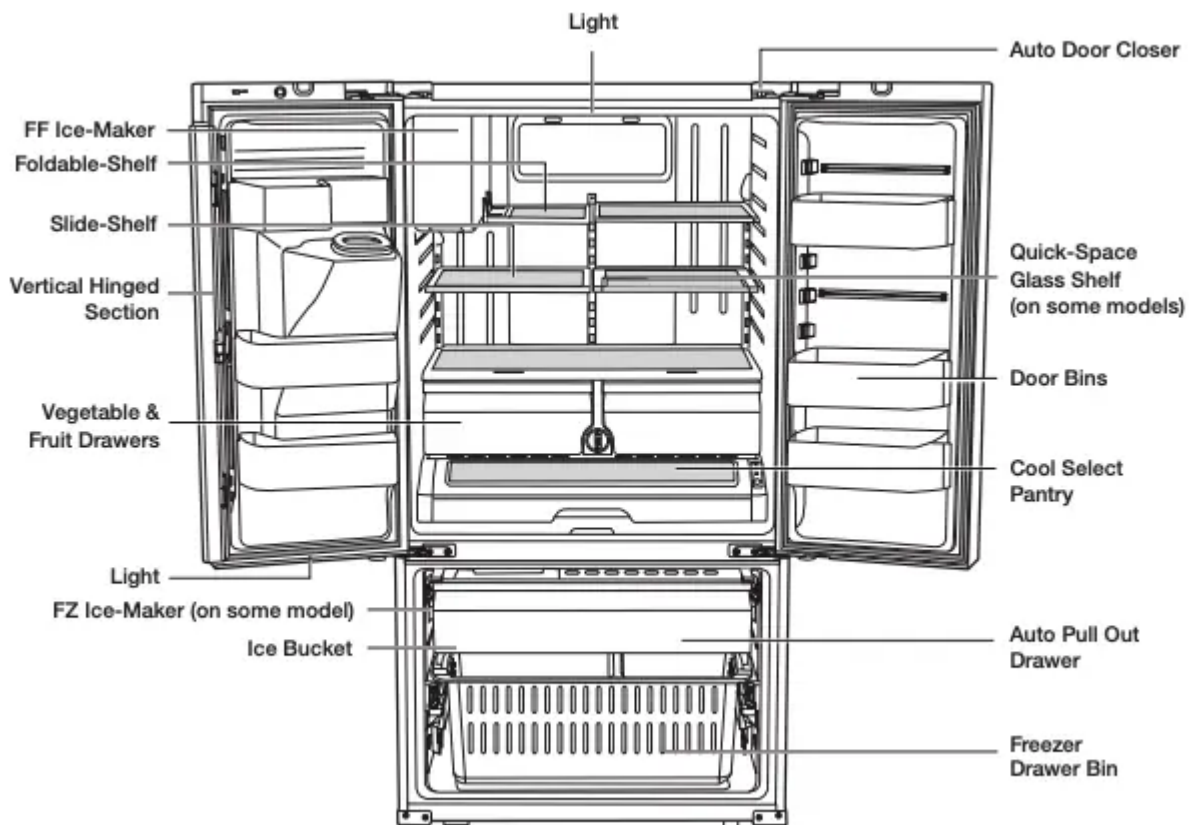
• Please wait 1 second before removing the cup after dispensing water to prevent spills. Do not pull out the lever dispenser after dispensing ice or water. It comes back automatically. Ice is made in cubes. When you select “Crushed”, the ice maker grinds the ice cubes into crushed ice.



Ice Maker in Freezer

## PARTS AND FEATURES

Use this page to become more familiar with the parts and features of the refrigerator



• When closing the door, make sure the Vertical Hinged Section is in the correct position to avoid scratching the other door.

• If the Vertical Hinged Section is reversed, put it back to the right position and close the door.

• Moisture may appear at times on the Vertical Hinged Section.

- The door handle may become loose over time. If this happens, tighten the bolts found on the inside of the door.
- If you close one door with a lot of force, the other door may open.



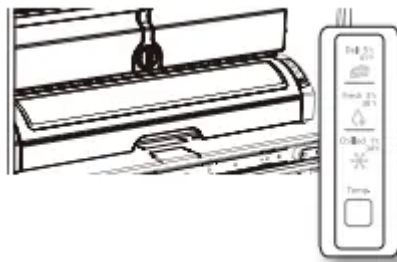
• When the door opens, the interlock switch automatically turns off the auger motor in the ice maker for safety reasons.



• When the interior or exterior LED lamp has gone out, please contact your service agents.

## USING THE COOL SELECT PANTRY

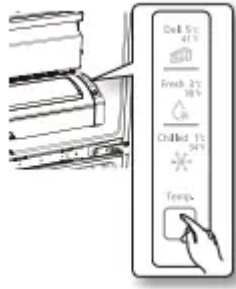
The Cool Select Pantry is a full-width drawer with adjustable temperature control. This pantry can be used for large party trays, deli items, pizza, beverages or miscellaneous items. There is a temperature control which can adjust the amount of cold air allowed into the pantry. The control is located on the right side of the pantry



- The Pantry has three modes: The Fresh mode, Chilled mode, and Deli mode. Fresh mode is the default. Press the Temp button repeatedly until the mode you want is lit. Once you select a mode, the temperature will change to match the mode you selected.
- The Pantry temperature may change depending on the number of items inside and where they are located, the ambient temperature, and how often the door is opened


### The Pantry Selection Button

1. When you select "Deli", the temperature of the pantry will be kept around 41 °F (or 5 °C). This feature helps keep food fresh for a long time.
2. When you select "Fresh", the temperature of the pantry will be kept around 38 °F (or 3 °C). This feature helps keep food fresh for a longer time.



3. When you select “Chilled”, the temperature of the pantry will be kept around 34 °F (or 1 °C). This feature also helps keep meat or fish fresh for a longer time. The table below lists the Pantry modes and the kinds of foods that can be stored safely for each mode.

<b>Deli</b>	<b>Fresh</b>	<b>Chiled</b>
• Pineapples	• cucumbers	• steaks
• lemons	• apples	• hard cheeses
• avocado	• oranges	• cold cuts
• potato	• grapes	• bacon
	• zucchinis	• hot dogs
	• corn	

-  Fruits and vegetables may be damaged when the “Chilled” mode is set.
- Do not store lettuce or other leafy produce in this pantry.



Do not store glass bottles in this pantry. If they are frozen, they can break and cause personal injury.



In case you put a water bowl without its lid into the pantry, condensation may form around surrounding parts.

## REMOVING THE REFRIGERATOR ACCESSORIES

### 1. Door Bins & Dairy Compartment

#### • *Door Bins ( 1 )*

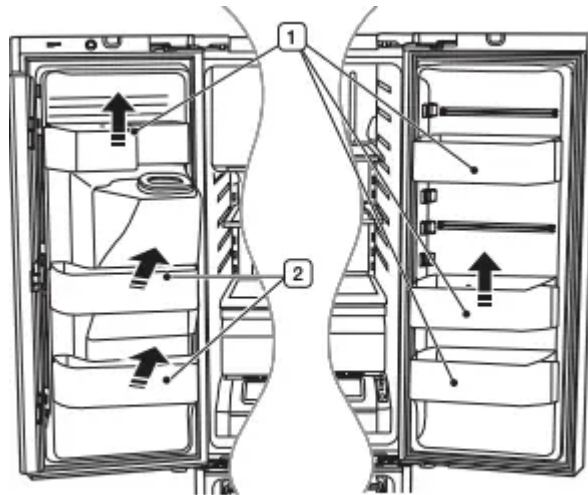
To remove - Simply lift the bin up and pull straight out.

To relocate - Slide it in above the desired location and push down until it stops.

#### • *Door Bins ( 2 )*

To remove - Take the right side of the bin out by lifting it at an angle along the guide, and then take the left side out by pulling it from the door.

To relocate - Slide it into the original location and push down until it sticks.



• Injury may occur if the door bins are not firmly assembled.

- Do not allow children to play with the bins. Sharp corners of the bins may cause injury.



Do not adjust a bin full of food. Remove the food first. To remove dust from the bins - Remove the guard and wash in water.

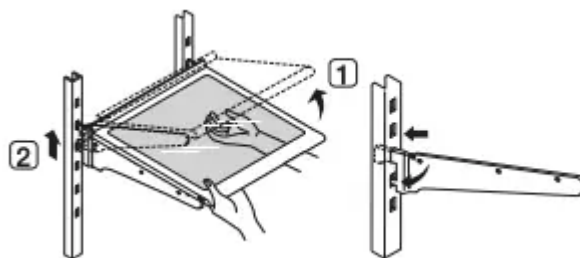
## 2. Tempered Glass shelves

To remove - Tilt up the front of the shelf in the direction shown ( 1 ) and lift it up vertically ( 2 ). Pull the shelf out.

To relocate - Tilt the front of the shelf up and guide the shelf hooks into the slots at a desired height. Then lower the front of the shelf so that the hooks can drop into the slots.



The Tempered Glass shelves are heavy. Use special care when removing them.



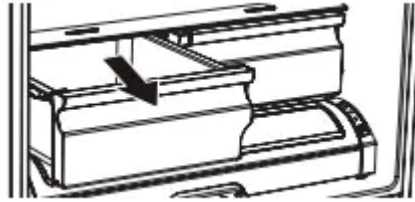
## 3. Vegetable & Fruit Drawers

To remove - Pull the drawer out to full extension. Tilt up the front of the drawer and pull straight out.

To relocate - Insert the drawer into the frame rails and push back into place.



The drawers need to be removed before the glass shelf above them can be lifted out.



#### 4. Cool select pantry

To remove the Cool select pantry

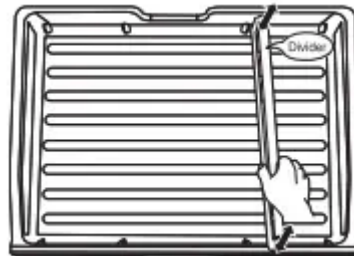
- Pull the pantry out to full extension. Tilt up the front side of the pantry and pull straight out.



To relocate the Cool select pantry – Push the rails to the back of the refrigerator. Place the drawer onto the rails and slide the pantry back until it is in place.

To remove the divider – Pull the pantry completely out to full extension and raise the front side of the divider to unhook it from the rear wall of the pantry, then lift the divider out.

To relocate the divider - Hook the back of the divider over the rear wall of the pantry and push the divider down.



#### Using the doors

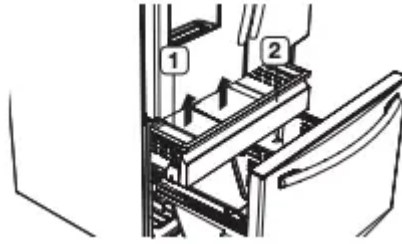
Ensure that the doors close all the way and are securely sealed. When the refrigerator door is only partially open, it will automatically close. But, the door will stay open when opened more than the auto close range and you must close it manually

### REMOVING THE REFRIGERATOR ACCESSORIES

#### 1. ICE BUCKET (in Auto Pull out drawer)

To remove - Lift the ice bucket ( 1 ).

To relocate - Place the ice bucket into the Auto Pull out drawer ( 2 ).



## 2. Super Extended Drawer

To remove - Pull the drawer out to full extension. Tilt up the rear of the drawer and lift straight out.

To relocate - Place the drawer onto the rails ( 4 ) by tilting it up. Lower the drawer into place until it is horizontal and slide the Drawer ( 3 ) in.



## 3. Freezer Drawer

To remove the freezer drawer - Pull the freezer drawer out fully. Tilt up the rear of the bin and lift it out to remove.

To relocate the freezer drawer - Place the bin into the rail assembly.



Do not allow babies or children go inside the drawer.

- It can cause death from suffocation by entrapment or a personal injury.

Do not sit on the Freezer door.

- The door may be broken and cause a personal injury.

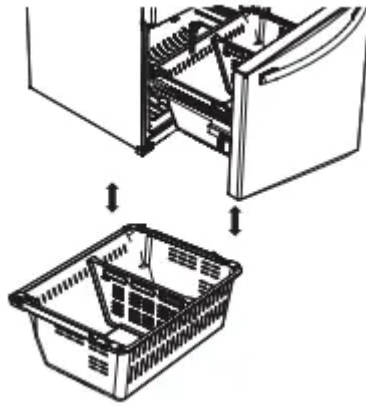
To prevent children entrapment, you must reinstall the divider using provided screw after cleaning or other actions if you removed the divider from the drawer.



Do not remove the divider.



If trapped inside, children may be injured or suffocate to death.

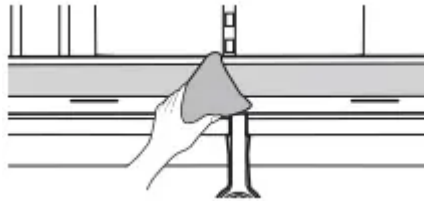


## CLEANING THE REFRIGERATOR

Caring for your Samsung French Door Refrigerator prolongs the life of your appliance and helps keep the refrigerator free of odor and germs.

### Cleaning the Interior

Clean the inside walls and accessories with a mild detergent and then wipe dry with a soft cloth. You can remove the drawers and shelves for a more thorough cleaning. Just make sure to dry drawers and shelves before putting them back into place.



### Cleaning the Exterior

Wipe the control panel and digital display with a damp, clean, soft cloth. Do not spray water directly on the surface of the refrigerator. The doors, handles, and cabinet surfaces should be cleaned with a mild detergent and then wiped dry with a soft cloth. To keep your appliance looking its best, polish the exterior once or twice a year.



Do not spray water directly on the refrigerator. Use a clean, damp cloth to clean.



Do not clean the appliance by spraying water directly onto it. Do not use benzene, thinner or alcohol to clean the appliance.

- This may result in discoloration, deformation, damage, electric shock or fire. Do not spray inflammable gas near the refrigerator.
- There is a risk of explosion or fire.



You can erase the printed letters on the display if you apply stainless cleaner directly to the area where the letters are printed.



### Cleaning the Ice / Water Dispenser

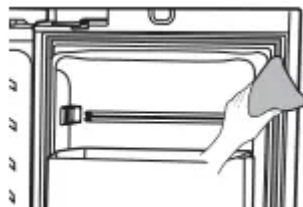
Wipe the Ice / Water Dispenser with a clean and soft cloth.



When using the crushed ice selection from the dispenser some residual ice chips may start to collect in the ice chute. To prevent that residual ice from melting and running out of the chute you should clean out the residual ice when you see it start to collect in the ice chute.



If the rubber door seals are dirty, the doors may not close properly, and the refrigerator will not operate efficiently. Keep the door seals free of dust or stains by cleaning the doors with a mild detergent and damp cloth. Wipe dry with a clean, soft cloth.



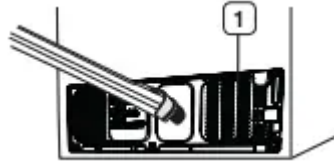
Do not clean the refrigerator with benzene, thinner, or car detergent. These substance could cause a fire.

## Cleaning the rear side of the refrigerator

To keep cords and exposed parts free of dust and dirt accumulation. Vacuum the rear side of the appliance once or twice a year.



Do not remove the back cover ( 1 ). You could suffer an electric shock.



## FOOD STORAGE TIPS



Foods	Refrigerator	Freezer	Storage Tips
<b>DAIRY PRODUCTS</b>			
Butter	2-3 Weeks	6-9 Months	Wrap or cover tightly.
Milk	1-2 Weeks	Not recommended	Check date code. Most milk and similar products are sold in date-coded cartons that indicate a product's peak freshness. Re-seal with cap or wrap tightly. Do not return unused portions to original container.
Cream Cheese, cheese food, and cheese spread	2-4 Weeks	Not recommended	Check date code. Keep all cheese tightly packed in moisture proof wrap
Hard Cheese (unopened)	3-4 Months	6 Months	
Hard Cheese (opened)	2 Months	Not recommended	
Cottage Cheese	10-15 Days	Not recommended	
Cream	7-10 Days	2 Months	Check date code. Most yogurt, creams, and similar products are sold in date-coded cartons that indicate a product's peak freshness. Re-seal or cover tightly. Do not return unused portions to original container.
Sour Cream	2 Weeks	Not recommended	
Cream Dips (opened)	1 Week	Not recommended	
Yogurt	10-14 Days	Not recommended	Check date code. Keep covered.
Frozen Yogurt	na	2 Months	
<b>EGGS</b>			
Eggs (uncooked)	3-4 Weeks	Not recommended	Check date code. Store eggs in coldest part of refrigerator and in their original container.
Eggs (cooked)	1 Week	Not recommended	Store in covered container
Leftover egg dishes	3-4 Days	Not recommended	Store in covered container
<b>FRESH FRUITS</b>			
Apples	1 Month	Not recommended	If storing in refrigerator, do not wash fruit before storing. Store in moisture resistant bags or containers. Wrap cut fruits. Some fruits darken when refrigerated.
Bananas	2-4 Days	Not recommended	
Peaches, Melons, Pears, Avocados	3-5 Days	Not recommended	
Berries and Cherries	2-3 Days	12 Months	
Apricots	3-5 Days	Not recommended	
Grapes	2-5 Days	na	
Pineapple (un-cut)	2-3 Days	Not recommended	
Pineapple (cut)	5-7 Days	6-12 Months	
Citrus	1-2 Weeks	Not recommended	Store uncovered.
Juice	6 Days	Not recommended	Check date code and re-seal in original container. Do not return unused portions to original container.
Frozen Juice	Thawing only	12 Months	Check date code. Do not re-freeze.

Foods	Refrigerator	Freezer	Storage Tips
<b>FISH AND SHELLFISH</b>			
<b>Fish</b>			
Fatty Fish (mackerel, trout, salmon)	1-2 Days	2-3 Months	Keep in original wrapper and store in coldest part of refrigerator. Package in vapor-proof and moisture proof wrap for freezer. Freeze at 0 °F (or -18 °C). Thaw in refrigerator or check date code. Freeze in original packaging.
Lean Fish (cod, flounder, etc)	1-2 Days	6 Months	
Frozen or Breaded	na	3 Months	
<b>Shellfish</b>			
Shrimp (uncooked)	1-2 Days	12 Months	To freeze, package in vapor-proof and moisture-proof container.
Crab	3-5 Days	10 Months	
Cooked Fish or Shellfish	2-3 Days	3 Months	
<b>MEAT</b>			
<b>Fresh, Uncooked</b>			
Chops	2-4 Days	6-12 Months	Check date code for use. Store in coldest part of refrigerator in original packaging. Package in moisture-proof and vapor-proof container for freezing. Recommended refrigerator temperature 33 °F to 36 °F (or 1 °C to 2 °C) and freezer temperature 0 °F to 2 °F (or -18 °C to -16 °C)
Ground	1 Day	3-4 Months	
Roast	2-4 Days	6-12 Months	
Bacon	1-2 Weeks	1-2 Months	
Sausage	1-2 Days	1-2 Months	
Steak	2-4 Days	6-9 Months	
Poultry	1 Day	12 Months	
Lunch meat	3-5 Days	1 Month	
<b>Cooked</b>			
Meat	2-3 Days	2-3 Months	Check date code for use. Store in coldest part of refrigerator in original packaging. Package in moisture-proof and vapor-proof container for freezing.
Poultry	2-3 Days	4-5 Months	
Ham	1-2 weeks	1-2 Months	

## Troubleshooting

### **The refrigerator does not work at all or it does not chill sufficiently.**

- Check if the power plug is properly connected.
- Check if the set temperature on the digital display is warmer than the freezer or fridge inner temperature. If it is, set the refrigerator colder.
- Is the refrigerator in direct sunlight or located near a heat source?
- Is the back of the refrigerator too close to the wall, preventing proper ventilation?

### **The food in the fridge is frozen.**

- Check if the set temperature on the digital display is too low.

- Try setting the refrigerator to a warmer temperature.
- Is the temperature in the room too low? Set the refrigerator warmer.
- Did you store the food which is juicy in the coldest part of the refrigerator? Try moving those items to the other shelves in the fridge instead of keeping them in the colder areas or bins.

**You hear unusual noise or sounds.**

- Check if the refrigerator is level and stable.
- Is the back of the refrigerator too close to the wall, preventing proper ventilation? Try moving the back of the refrigerator at least 2 inches from the wall.
- Was anything dropped behind or under the refrigerator?
- A “ticking” sound is heard from inside the refrigerator. This is normal and occurs because various accessories are contracting or expanding according to the temperature of the refrigerator interior.
- If it sounds as if something is hitting something else inside the refrigerator, this is normal. The sound is caused by the compressor operating at high capacity.

**The cabinet-door sealing area of the appliance is hot and condensation is occurring.**

- Some heat is normal as anti-condensators are installed in the vertical hinged section of the refrigerator to prevent condensation.
- Is the refrigerator door ajar? Condensation can occur when you leave the door open for a long time.

**Ice Maker is not producing ice.**

- Did you wait for 12 hours after installation of the water supply line before making ice?
- Is the water line connected and the shut-off valve opened?
- Did you manually stop the ice making function?
- Is the freezer temperature too warm? Try setting the freezer temperature lower.

**You can hear water bubbling in the refrigerator.**

- This is normal. The bubbling comes from refrigerant circulating through the refrigerator.

**There is a bad smell in the refrigerator**

- Check for spoiled food.
- Foods with strong odors (for example, fish) should be tightly covered.
- Clean out your freezer periodically and throw away any spoiled or suspicious food.

**Frost forms on the walls of the freezer.**



- Is the air vent blocked? Remove any obstructions so air can circulate freely.
- Allow sufficient space between the stored foods for efficient air circulation.
- Is the freezer drawer closed properly?

**Water dispenser is not functioning.**

- Is the water line connected and the shut-off valve opened?
- Has the water supply line tubing been crushed or kinked?
- Make sure the tubing is free and clear of any obstruction.
- Is the water tank frozen because the fridge temperature is too low? Try selecting a warmer setting on the Digital display

**Auto close system does not work with the freezer door.**

- Is there an imbalance between the right and left parts of the door?
- Open and close the door smoothly 1~2 times. After you do this, the auto close system usually works properly again.
- Try opening the door smoothly to avoid unbalancing the right and the left part of the door.

**Warning**

This content is compiled from multiple sources and is provided for reference purposes only. It may not be complete or fully applicable to all situations. If you are unable to resolve your issue, please contact the product manufacturer or an authorized service provider for official support.